



# Hints and tips for the care of Zippo Windproof Lighters / English - en

©2012 Zippo Manufacturing Company. All Rights Reserved.

## Brass Lighters

### **What prevents my Zippo brass lighter from tarnishing?**

Each Zippo brass lighter has a light protective coating to prevent tarnishing before it is used. The coating will wear off with normal use.

### **How do I clean my Zippo brass lighter?**

To restore the natural patina of solid brass, we recommend the following:

- High polish case: Clean with brass polish.
- Brush finish case: Gently clean with multi-purpose cleaning pad such as light or medium duty Scotch Brite brand (do not use a steel scouring pad). Carefully rub the pad in the same direction of the grain of the finish.

### **How do I clean the laser engraved brass design on my matte lighter?**

The lasered design exposes the brass surface which may tarnish. This is a normal characteristic of brass. To clean the brass, we recommend using a soft cloth and brass cleaner.

## Antique Finish

### **Will the finish on my Antique Finish lighter wear off?**

The Antique Finish lighter has a unique finish to give it a used, nostalgic, and time-worn look. This finish is not permanent and will begin to wear with use.

### **How do I prevent the finish on my Zippo antique finish lighter from wearing off?**

When exposed to alcohol or lighter fluid, the anti-aging will immediately begin to wear. When filling the lighter, avoid spilling lighter fluid on the outer case.

## Gold Lighters

### **How do I care for the finish on my Zippo gold lighter?**

Gently clean plated portions with a soft cloth and water or Zippo Lighter Fluid. Do not use abrasive substances.

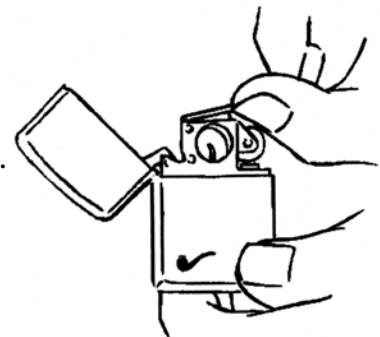
## Pipe Lighters

### **What makes the Zippo pipe lighter insert unique?**

The chimney of the Zippo pipe lighter encases flame in metal, allowing the flame to be drawn directly into the pipe without damaging the bowl. The pipe lighter insert fits in any standard (not Slim) Zippo windproof lighter.

### **How do I remove the chimney cap?**

For maintenance purposes, the cap on the chimney of your Zippo pipe lighter is removable. To remove the cap, slip your thumbnail under the edge of either end and lift.



For great tips and hints on the care of your new lighter, visit [zippo.com/care](http://zippo.com/care).

Zippo products are legally protected by patents and trademark registration, visit [zippo.com/patents](http://zippo.com/patents) for details.



## Genuine Zippo Windproof Lighter

From timeless design to the unmistakable "click" . . . from the quality of materials and workmanship to the Lifetime Guarantee . . . these are the features that make a Zippo lighter so satisfying to own.

The fact that the Zippo windproof lighter has endured, virtually unchanged, for over 80 years is proof of its appeal to millions of users and collectors.

©2018 Zippo Manufacturing Company.



### WARNING: KEEP OUT OF REACH OF CHILDREN.

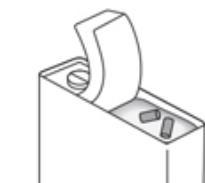
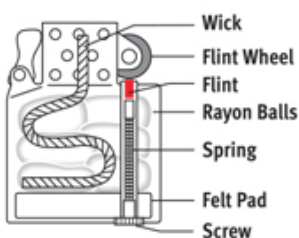
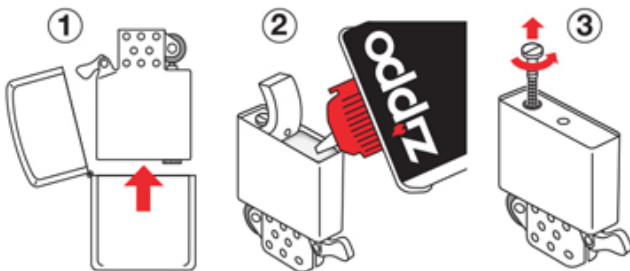
Ignite lighter away from face and clothing. When filled, will contain flammable fluid. Never expose to heat above 122° F (50° C) or to prolonged sunlight. Never puncture or put in fire. Be sure flame is out after use. This lighter does not self-extinguish – close cover to put out. Fuel is a skin irritant, do not overfill.

### THIS LIGHTER IS NOT CHILD RESISTANT.

181350-g

### Always use genuine Zippo fluid, flints and wicks.

Zippo lighter fluid is specially formulated for Zippo windproof lighters. It is clean burning, quick lighting, and long lasting.



TIP: Keep extra flint supply under felt pad (4).

### To fill your Zippo lighter

- **Fill only with Zippo fluid.**
- Hold lighter in one hand. Use the other hand to remove lighter insert (1).
- **Fill slowly, never overfill.** Lift felt pad to reveal the packing material in the fuel chamber (2). Saturate the packing with Zippo lighter fluid. Stop filling when fuel reaches top of packing. If overfilled it can leak fuel. Fuel is a skin irritant.
- **Wipe lighter and hands dry before igniting.** Return lighter insert into case. If overfilled, do not put in pocket or next to skin. If fuel gets on skin, wash the affected area. If irritation persists or worsens, see a Doctor.
- **Be sure fuel can is closed** and there is no spilled fuel in vicinity before igniting. This is flammable fluid.

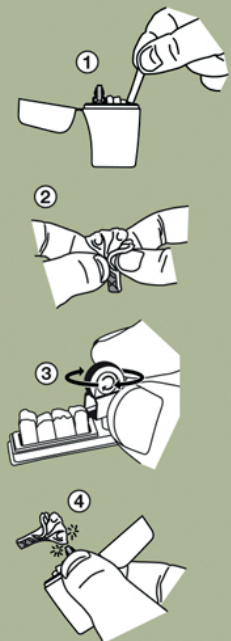
### To re-flint your Zippo lighter

Remove screw (3) and attached spring at end of fuel chamber. Be sure old flint is removed from tube. Place new flint in tube and replace spring, screw lightly. Be sure screw is turned as far as it will go; if not, cover will not close properly. If wheel binds after new flint is inserted, turn wheel backwards a few times.

### Wick Maintenance

When wick becomes black from carbon, pull it up with tweezers until clean wick appears (approx. 1 cm), then trim the end making it even with the chimney height. Perform this maintenance 1 or 2 times a year. It will be necessary to replace the wick after it has been trimmed more than 2 or 3 times.

Not a lighter, but great for emergencies in the great outdoors. Complete instructions inside.



Made in USA

**Zippo**  
Zippo Manufacturing Company

**WARNING: KEEP OUT OF REACH OF CHILDREN. KEEP AWAY FROM FIRE OR HEAT.**

1. Open Fire Starter lid and remove one Tinder Stick from storage compartment.
2. Spread out white cotton material of Tinder Stick to make it easier to ignite.
3. Rotate flint wheel in the correct direction (see sticker on side of wheel). Rotation in the wrong direction will result in the wheel being jammed with the flint. The orientation of the wheel can be reversed for operating preference and hand positioning by pulling the flint wheel cartridge up from the casing, rotating it 180 degrees, and then re-inserting it back into the casing.
4. Place wheel close to cotton, rotate wheel quickly with sparks directed towards cotton. Repeat until the cotton is burning. The burning cotton will get wax burning.
5. Pull back from burning cotton and close the lid. Be careful to avoid burns.

