



## Jim Beam® Lighters

The Jim Beam® lighters are created using various imprint methods; color image, laser engrave, rotary engrave, auto engrave, and emblem. These unique designs have been placed on several different lighter cases such as White Matte, Satin Chrome, Brushed Chrome, High Polish Chrome, High Polish Brass, and Black Ice®.

All Zippo windproof lighters are American made in our Bradford, PA factory.

### Imprint Methods:



**Laser Engrave**

Laser engraving is computer programmed to generate an accurate replication of an imprint.



**Color Image**

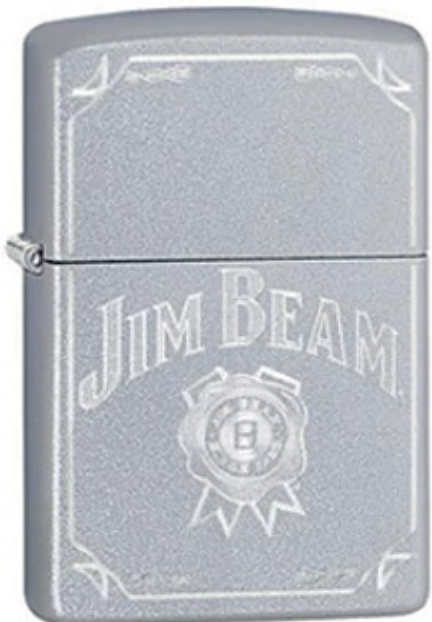
State-of-the-art printing method allows Zippo to imprint multiple colors or full-color photographic representations.



**Auto Engrave**

Auto Engrave is performed by skilled artisans to inscribe an image into the product using directional fill patterns.

### Features:



**Case**

Standard case shape featuring rounded corners and top with a flat bottom. A five-barrel hinge joins the top and the bottom.



**Insert**

Standard insert with 16 holes in the chimney (8 per side).



**Bottom Stamp**

Bottom stamp with Zippo logo from the period authenticates these lighters as genuine Zippo.



**Packaging**

Unless otherwise stated, every Zippo windproof lighter is packaged in the 'one box'. The patented 'one box' is attractive, easy to handle, and designed to display more of the lighter than ever.