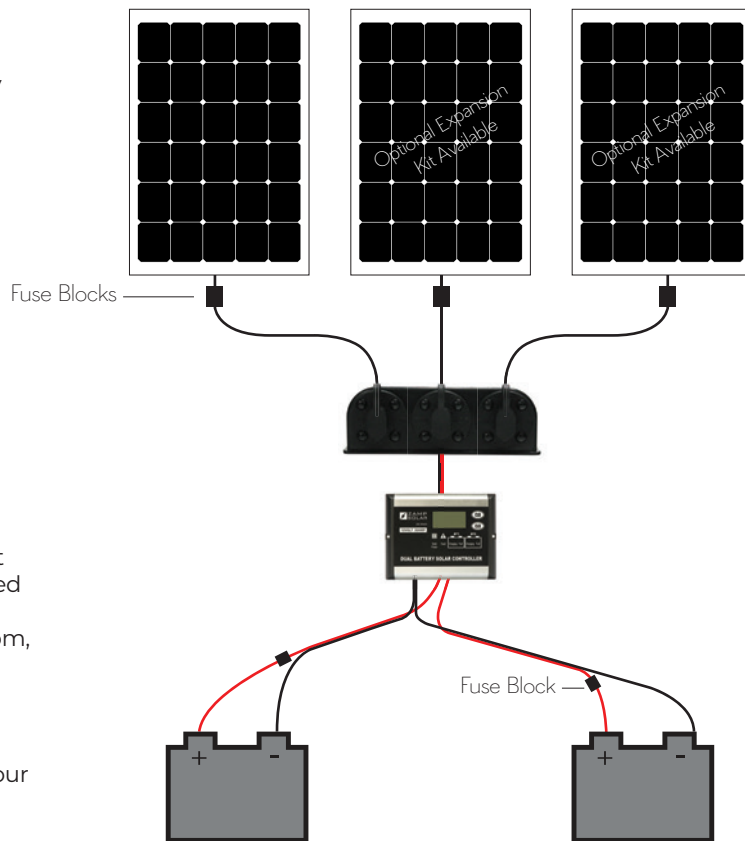


Install Safety:

- Inspect the installation area for safety hazards
- Be sure to remove all metal, such as rings and other jewelry
- Disconnect all power sources and ensure solar panels are completely covered by a box or blanket until installation is complete

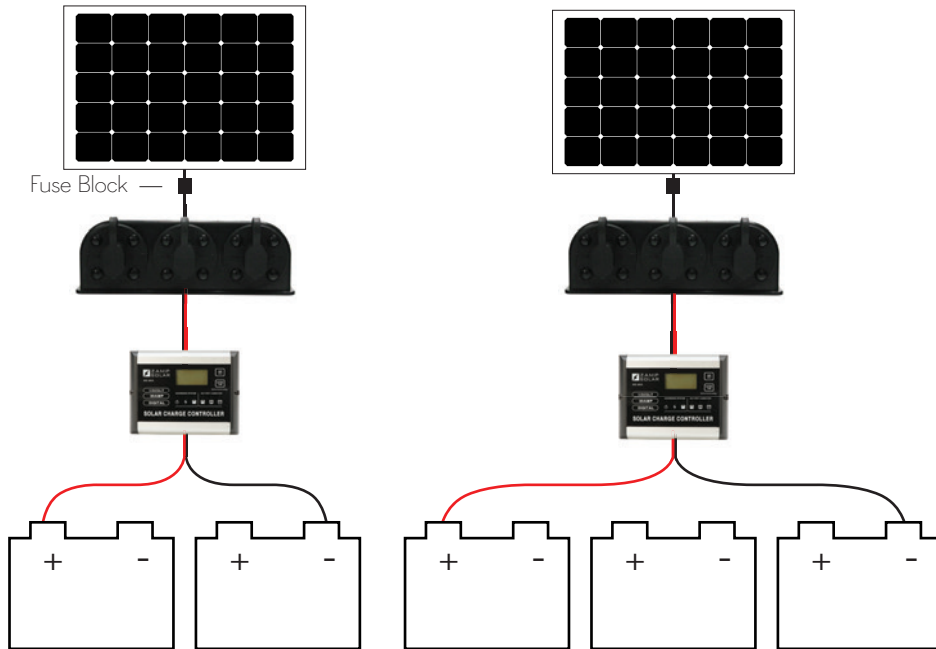
Install Instructions:

1. Arrange the layout of your panels and wires, ensuring that:
 - 3-port roof cap is no more than 15' from charge controller
 - panel leads can reach 3-port roof cap
 - charge controller is no more than 9' from battery
 - panels are not shaded by vents, AC units, or other obstructions
2. Connect 15' Solar wire(s) to the 3-port roof cap(s).
 - Strip the ends of both positive and negative wires 1/2 inch
 - Screw the red (+) wire into corresponding positive terminal, black (-) wire into corresponding negative terminal.
3. Mount 3-port roof cap and route the 15' cable from roof to charge controller location *Do not make connections at this time
4. Proceed to route the 10' cable from the charge controller to the battery *Do not make connections at this time
5. Connect the positive solar wire to the charge controller, then connect the positive battery wires to the controller (1 red terminal on BAT 1, 1 red terminal on BAT 2).
6. Stack the negative wires on the charge controller (solar wire on bottom, battery wires on top)
7. Mount your charge controller
8. Attach mounting feet to panels and proceed with panel installation.
9. Connect positive wire to battery and repeat with negative wire
10. You may now plug the SA E leads into the 3-port cap and uncover your panels
11. You are now charging your battery.
12. Configure your charge controller to the proper battery type(s)

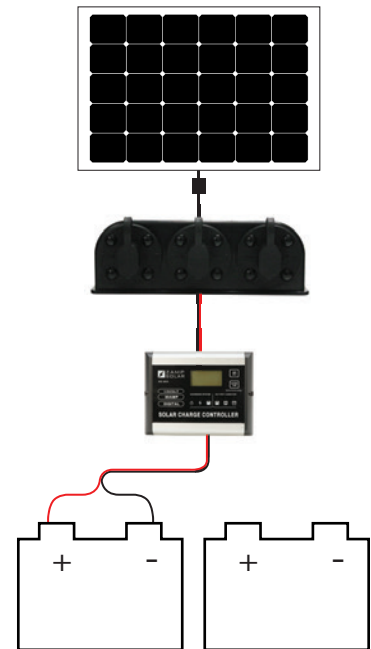


When wiring a solar kit to multiple batteries, it is important to remember that your batteries are wired together. To gain the most from your solar kit, be sure to place the positive wire on the first battery in the sequence and the negative wire on the last battery in the sequence. This is true regardless of the number of batteries in the bank.

How **TO** wire a solar controller for 2 batteries How **TO** wire a solar controller for 3 batteries



How **NOT** to wire a solar controller for 2 batteries



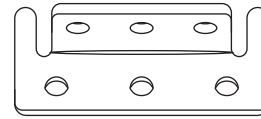
Installation Instructions

1. Find placement for your panel(s) on roof and foot placement on the panels.
2. Install mounting feet to panel by following the steps below.
3. Figure 1. Insert 4 x T-Nuts into the frame on the edge where you will be placing the tall feet.
4. With T-Nuts inserted into the frame place the tall feet along the frame as seen in Figure 2. Then use the hex nuts and lock washers to secure the feet to the frame.
5. On the side of the panel where you will have the short feet you will be screwing the bracket into the frame with the provided self-tapping screws. See Figure 3.
6. With all mounting feet secured to the panel place the panel on the roof and mark the location of the screw holes on the roof of your RV.
5. Drill holes as indicated by the marks from previous step.
6. Apply a generous amount of sealant to the RV roof where mounting feet and screws will be placed.
7. Place panels over the marked areas covered in sealant and drill through the roof of the RV.
8. To secure the panels to your roof screw the panels onto the roof with appropriate hardware (not provided).
9. Retighten as needed.

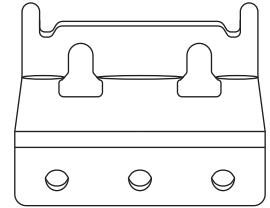
* Reach out to your RV manufacturer to find the appropriate hardware to secure the panels to your RV roof

Curved Roof Mounting Feet Components

· A: 2 x short feet



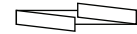
· B: 2 x tall feet



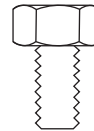
· C: 4 x T-Nuts



· D: 4 x Lock Washers



· E: 4 x Hex Bolts



· F: 6 x Self-Tapping Screws



Figure 1

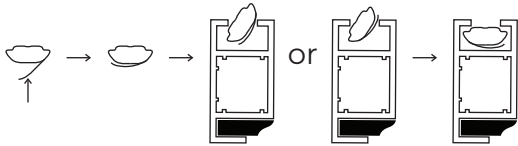


Figure 2

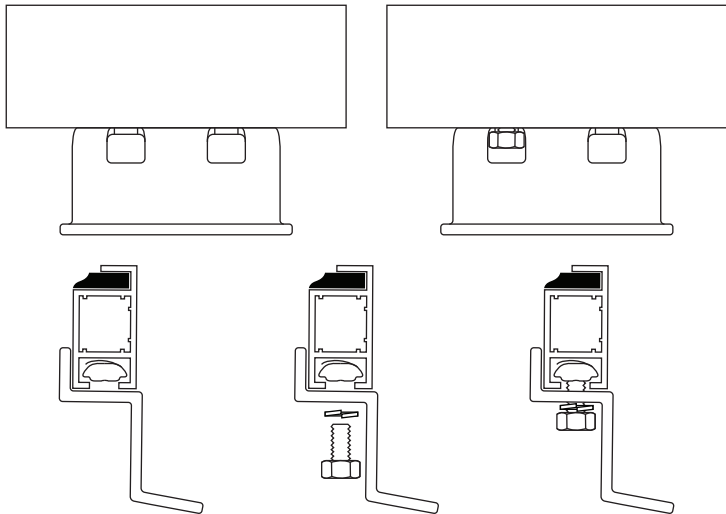


Figure 3

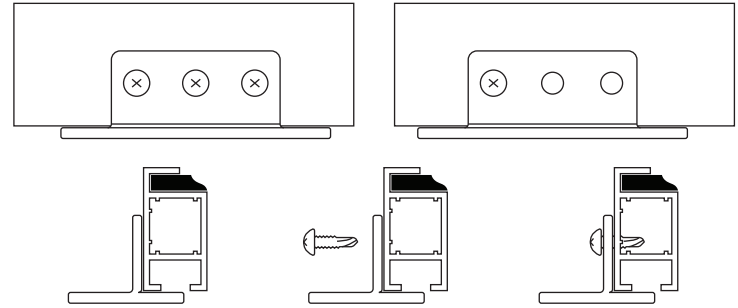


Figure 4

