



2020 PRODUCT CATALOG

Q SERIES - STEEL FRAME	(03 - 12)	PPS M2 SERIES	(39 - 44)	P22Q SERIES	(55 - 58)	WALTHER GEAR	(69 - 70)
Q SERIES - POLYMER	(13 - 22)	CCP M2 SERIES	(45 - 50)	PPK SERIES	(59 - 66)	CAMPUS PAGE	(71 - 72)
PPQ SERIES	(23 - 38)	PK380 SERIES	(51 - 54)	WARRANTY / TEAM	(67 - 68)	ACCESSORIES	(73 - 74)

WE ARE THE PERFORMANCE LEADER.
DRIVEN BY OUR PASSION FOR UNCOMPROMISED PERFORMANCE.





POWER. FORGED IN STEEL.

Breaking boundaries and shattering expectations. The Q Series Steel Frame is superior performance taken to the next level through heightened functionality and a relentless determination to deliver precisely what the experienced shooter demands. The real competitive edge begins here.

The Q Series Steel Frame is a remarkable triumph made possible only by Walther's superior standards. Despite common misconceptions, you can buy performance.



| Q4 STEEL FRAME |



| Q4 STEEL FRAME OR |



| Q5 MATCH STEEL FRAME |



| Q5 MATCH STEEL FRAME PRO |





NEW Q4 STEEL FRAME

Outmatched by no one. Walther continues their tradition of superiority with a handgun designed specifically for those who only buy the best and nothing less. This is the ultimate representation of high-class performance in a concealed carry package that just can't be found anywhere else. A testament to Walther's enduring legacy of excellence, the Q4 Steel Frame delivers peak performance when you need it most. Featuring Walther's legendary barrel, phosphoric sights as well as front and rear serrations, the advantages this handgun delivers are undeniable.







NEW Q4 STEEL FRAME (OR) OPTICS READY

A feat in firearm engineering that simply must be felt to be believed, the Q4 Steel Frame OR will surpass all expectations with its unrivaled accuracy and performance. Its steel frame - precision machined from solid steel billet - improves ergonomics with a wrap-around grip panel, extended beavertail, full length picatinny rail and recessed slide release. The weight distribution of the steel frame drastically reduces recoil to improve shooter performance, ultimately contributing to overall efficiency. Featuring Walther's legendary barrel, LPA sights as well as front and rear serrations, plus the option for optics when the situation demands it. Get yours today and shoot with the best.







Q5 MATCH STEEL FRAME

The Q5 Match Steel Frame is a testament to the level of excellence found solely at Walther. Its steel frame – precision machined from solid steel billet – improves ergonomics with a wrap-around grip panel, extended beavertail, full-length picatinny rail, and recessed slide release. The weight distribution of the steel frame drastically reduces recoil to improve shooter performance, ultimately contributing to overall efficiency. A modern work of art in its own right, the slide is outfitted with features previously found only on custom handguns. It is ported and optic ready, with LPA sights as well as front and rear serrations. Walther's superior accuracy is quickly realized when shooting thanks to the 5" barrel with polygonal rifling and stepped chamber.







Q5 MATCH STEEL FRAME PRO

Breaking boundaries and shattering expectations. The Q5 Match Steel Frame Pro is superior performance taken to the next level through heightened functionality and a relentless determination to deliver precisely what the experienced shooter demands. The Q5 Match Steel Frame Pro comes standard with flared magwell and extended basepads, the real competitive edge begins here. Despite common misconceptions, you can buy performance. USPSA approved for Production and Carry Optics. IDPA approved for Stock Service Pistol and Carry Optics.







VICTORY OUT OF THE BOX.

Time-tested performance meets technological precision with the Q Series of handguns by Walther. Optic-equipped handguns have undoubtedly risen in popularity over the last few years. With practice, the right optic can help you become a faster and more efficient shooter. The Q Series of pistols are uniquely designed to give you the flexibility you need to swap from iron sights to optics easily. Built for right and left-handed shooters, the Q Series pistols feature an ambidextrous slide stop and reversible button-style magazine release.



| Q4 TAC M1 |



| Q4 TAC M2 |



| Q5 MATCH M1 |



| Q5 MATCH M2 |





Q4 TAC M2

The Q4 Tac provides unmatched compatibility with the most efficient defense tools available today, allowing for the latest advances in both suppressors and slide-mounted red dots. Pairing these features with unparalleled ergonomics, superb quick-defense trigger, and lifetime warranty make the Q4 Tac one of the most versatile pistols on the market. The Q4 Tac is uniquely designed to give you the flexibility you need to swap from iron sights to optics easily. Built for right and left-handed shooters, the Q4 Tac M2 features an ambidextrous slide stop and reversible button-style magazine release. Experience for yourself why the Q4 Tac is the ultimate handgun for shooters who seek nothing less than the best. Adaptable. Efficient. The perfect integration of both professional and tactical dynamics. The Q4 Tac is unparalleled proficiency in a platform designed to meet your individual needs.





SPIRITUS SYSTEMS





Q5 MATCH M2

The Q5 Match is a remarkable triumph made possible only by Walther's superior standards. A modern work of art in its own right, the slide is outfitted with features previously found only on custom handguns. It is ported and optic ready, with LPA sights as well as front and rear serrations. Walther's superior accuracy is quickly realized when shooting thanks to the 5" barrel with polygonal rifling and stepped chamber. The interchangeable backstraps allow you to tune your grip, giving you a perfect, straight-back trigger pull. This adjustability also provides access to the magazine and slide releases without shifting your hand. Designed for right and left-handed shooters, the Q5 Match features an ambidextrous slide stop and reversible button-style magazine release. This platform allows you to maximize the accuracy, power, and speed necessary to dominate the competition completely.







Q4 TAC M1

The Q4 Tac provides unmatched compatibility with the most efficient defense tools available today, allowing for the latest advances in both suppressors and slide-mounted red dots. Pairing these features with unparalleled ergonomics, superb quick-defense trigger, and lifetime Warranty make the Q4 Tac one of the most versatile pistols on the market. Built for right and left-handed shooters, the Q4 Tac M1 features both an ambidextrous slide stop, and **Paddle-Style Magazine Release**. Experience for yourself why the Q4 Tac is the ultimate handgun for shooters who seek nothing less than the best. Adaptable. Efficient. The perfect integration of both professional and tactical dynamics. The Q4 Tac is unparalleled proficiency in a platform designed to meet your individual needs.







Q5 MATCH M1

The Q5 Match is a remarkable triumph made possible only by Walther's superior standards. A modern work of art in its own right, the slide is outfitted with features previously found only on custom handguns. It is ported and optic ready, with LPA sights as well as front and rear serrations. Walther's superior accuracy is quickly realized when shooting thanks to the 5" barrel with polygonal rifling and stepped chamber. The interchangeable backstraps allow you to tune your grip, giving you a perfect, straight-back trigger pull. This adjustability also provides access to the magazine and slide releases without shifting your hand. Designed for right and left-handed shooters, the Q5 Match M1 features an ambidextrous slide stop and an ambidextrous **Paddle-Style Magazine Release**. This platform allows you to maximize the accuracy, power, and speed necessary to dominate the competition completely.







A TRIGGER SECOND TO NONE.

Extraordinarily comfortable and genuinely elegant, advancing both efficiency and ergonomics for self-defense handguns in ways never thought possible before. The PPQ is the ultimate definition of effectiveness. The PPQ is the handgun that has the entire industry talking. The quick-defense trigger is known as the best striker-fired trigger by nearly every critic. The ergonomically designed grips fit the hand like a familiar pair of gloves, providing a uniquely accurate natural point of aim. You'll have to feel it for yourself to believe it.



| PPQ 4\" M2 |



| PPQ 4\" M1 |



| PPQ 5\" M2 |



| PPQ SC |



| PPQ NAVY |



| PPQ 45 |



| PPQ 45 SD |



| PPQ 22 |



| PPQ SD 22 |



| PPQ 22 5\" |





PPQ M2

Out of the box, the PPQ is one of the most versatile pistols on the market! The size and capacity make it an excellent option for concealed carry, home defense, duty use, recreational, or competition shooting. Feel the excellence of Walther suited to your needs with the PPQ, a handgun that defines both efficiency and performance. The interchangeable backstraps allow you to tune your grip, giving you a perfect, straight-back trigger pull. This adjustability also provides access to the magazine and slide releases without shifting your hand. Designed for right and left-handed shooters, the PPQ M2 features an ambidextrous slide stop and reversible button-style magazine release.







PPQ M2 5"

This is the same great PPQ M2 Grip & Trigger with a 5-inch barrel. Extended barrel length offers a longer sight radius for greater accuracy and an increase in muzzle velocity. A smooth quick-defense trigger delivers accurate and fast follow-up shots. Interchangeable backstraps ensure that the sculpted grip meshes comfortably in your hand for greater control. The PPQ M2 5" is everything you desire in a high performance handgun.







PPQ SUB-COMPACT

Signature ergonomics and smooth single-action triggers are cornerstones of the award winning PPQ platform. The PPQ Sub-Compact provides all the features from the Legendary PPQ line in a smaller package. Accuracy and concealability are perfectly meshed together in this quality self-defense handgun. The PPQ SC is extremely comfortable and controllable thanks to the superior ergonomics and customizable fit of the included interchangeable back straps.



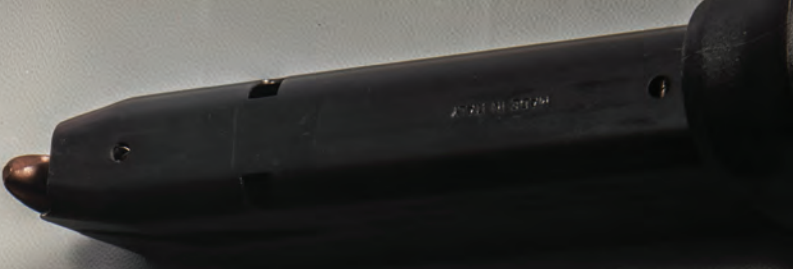




PPQ NAVY

Developed to suit the unique needs of an International Special Operations team, the Navy SD is Walther's most versatile offering to the PPQ family. The unique slide design forces water to drain from the striker channel, allowing reliable function during Maritime operations. The threaded barrel on the Navy SD offers compatibility for many popular suppressors on the market today.







PPQ 45

The Walther PPQ 45 features a grip circumference that's the same as its little brother, the PPQ 9mm, while still boasting a 12-round magazine capacity. The PPQ 45 is also equipped with the quick defense trigger made famous by the PPQ family. Combining the German engineering of the PPQ and the American .45 ACP ammunition produces an extremely accurate handgun with low muzzle blast and very moderate recoil. If you are looking for a soft shooting, heavy hitting, self and home-defense handgun, look no further than the PPQ 45.







PPQ 22

Extraordinarily comfortable and genuinely elegant, advancing both efficiency and ergonomics for self-defense handguns in ways never thought possible before. PPQ 22 is the ultimate definition of effectiveness. Walther delivers one of the most satisfying shooting experiences yet with the incredibly proficient PPQ 22 M2. This handgun features all the outstanding benefits of the PPQ series in a convenient rimfire caliber. The platform uniquely allows PPQ owners to utilize standard PPQ 9mm holsters for practice at the range, at a fraction of the ammo cost! The PPQ 22 provides the same ergonomics, controls, and feel of the trigger. This rimfire exhibits all the high-quality performance that the PPQ series is known to have. Premium features such as adjustable elevation sights and a threaded barrel make this pistol an indisputable leader in its class. This pistol is Walther ingenuity in action.







PPQ M1

Out of the box, the PPQ is one of the most versatile pistols on the market! The size and capacity make it an excellent option for concealed carry, home defense, duty use, recreational, or competition shooting. Feel the excellence of Walther suited to your needs with the PPQ, a handgun that defines both efficiency and performance. The interchangeable backstraps allow you to tune your grip, giving you a perfect, straight-back trigger pull. This adjustability also provides access to the magazine and slide releases without shifting your hand. Designed for right and left-handed shooters, the PPQ M1 features both an ambidextrous slide stop and **Paddle-Style Magazine Release**.





kate spade
NEW YORK



THE SINGLE-STACK THAT STARTED IT ALL.

The PPS M2 Series is a revolutionary yet practical concept. Delivering the premier concealed carry option with unprecedented accuracy and comfortability, capable of withstanding anything thrown in its way. Upon its release, the PPS series transformed the industry by introducing a polymer single-stack concealed carry pistol, effectively establishing a trend that remains popular still today. The PPS M2 is a more refined version of that original design, now measuring only 1" thick! It is the ultimate representation of Walther's world-renowned performance catered to the expectations of the modern shooter.



| PPS M2 |



| PPS M2 LE |



| PPS M2 RMsC |



| PPS M2 CT |



| PPS M2 XS |





PPS M2

The thin, yet comfortable full frame provides the most grip surface in its class, allowing ample room for off-hand support. More grip surface provides significantly improved recoil management when combined with the higher grip supplied by the undercut trigger guard. The secret to the accuracy of the PPS M2 results from the legendary Walther barrel and an internal steel chassis that provides superior slide-to-frame fit. These features make the PPS M2 the most accurate, controllable, and concealable handgun available on the market. Often imitated, but never duplicated, the PPS series is designed to exceed every expectation and deliver the absolute best shooting experience possible.







PPS M2 - RMSc

In a defensive pistol, putting rounds on target rapidly and accurately defines success. The PPS M2 with Shield RMSc micro red dot sight is an extremely thin concealed carry package that enhances target acquisition while maintaining co-witnessed iron sights. Combining the best single stack pistol available with the RMSc red-dot sight creates an unfair advantage in any self-defense encounter.







EASY TO RACK. TOOL-LESS TAKEDOWN. REDUCED RECOIL.

Maximum efficiency. Minimal effort. An achievement born from an unabating commitment to excellence. All in the most comfortable and accessible firearm offered in the market today. The CCP – or Concealed Carry Pistol – is the first polymer pistol with Softcoil gas technology. This technology improves the user's experience by reducing overall felt recoil and allowing the slide to be easily manipulated regardless of hand strength.



| CCP M2 |



| CCP M2 STAINLESS |



| CCP M2 - RED LASER |



| CCP M2 380 |



| CCP M2 380 STAINLESS |





CCP M2 - 9MM

Once again pushing beyond the boundaries of expectations, Walther released the extraordinary CCP M2 9mm pistol. One of the most comfortable and accessible firearms on the market today. The CCP is also the most ergonomic and comfortable handgun in Walther's dynamic concealed carry lineup. Tool-less takedown and a fixed barrel allow for easy cleaning and maintenance, making this one of the most innovative pistols available. With additional popular features such as an external safety, front, and rear slide serrations and a reversible magazine release, the CCP M2 handgun is sure to become a valuable addition to your everyday carry.







NEW CCP M2 - .380 ACP

The CCP M2 handgun series represents the next step in the pursuit of perfection at Walther and is now available in .380 ACP. Providing one of the easiest shooting experiences with its next-to-nothing recoil. Tool-less takedown and a fixed barrel allow for easy cleaning and maintenance, making this one of the most accessible pistols available today. With additional popular features such as an external safety, front, and rear slide serrations and a reversible magazine release, the CCP M2 handgun is sure to become a valuable addition to your everyday carry.







A MODERN TAKE ON CLASSIC STYLE.

Impressive is an understatement. Unbelievably capable in any situation, this modern fusion of practicality, power, and function is sure to deliver outstanding results with every shot. The PK380 was the first semi-automatic polymer pistol developed with an easy to rack slide. Its single-action/double-action trigger and internal slide stop are inspired by the legendary PPK, making the PK380 a real force to be reckoned with. Chambered in .380 ACP, it provides noticeably soft and manageable recoil, allowing for the best shooting experience possible.



| PK380 |



| PK380 NICKEL |



| PK380 ANGEL BLUE |



| PK380 LASER SET |

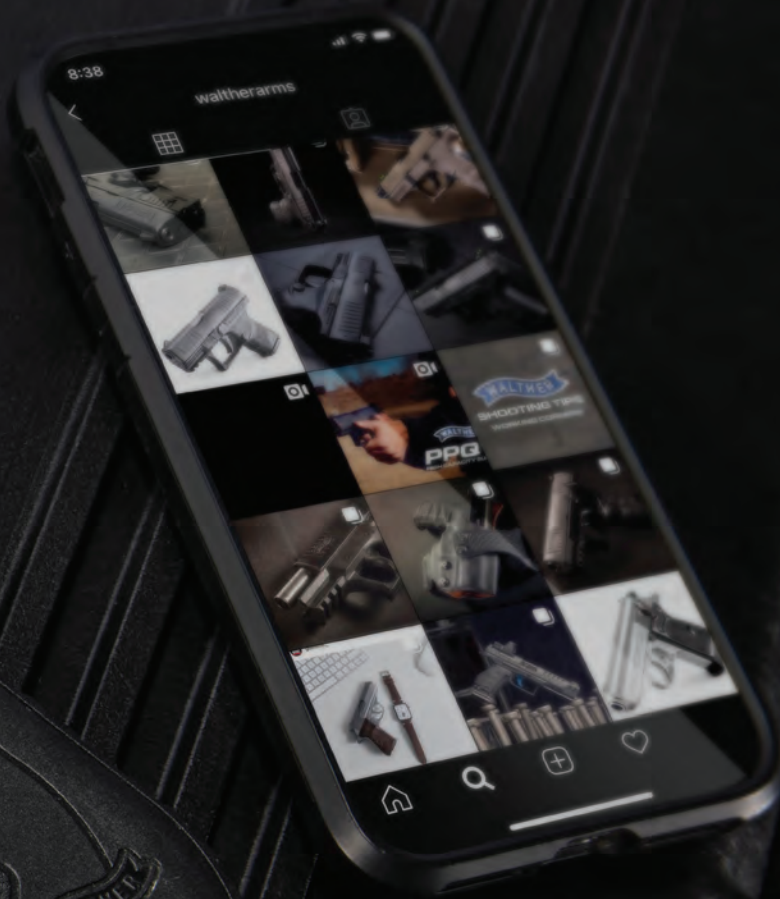




PK380

The PK380 is small, light, and stylish. The easy to handle size and overall dimensions of this pistol make it an ideal option for concealed carry. The .380 caliber is powerful enough for any circumstance. The easy-to-operate slide, slight recoil, and ergonomic grip make this handgun a great choice for any shooter. The PK380 is fully ambidextrous with both a paddle-style magazine release and slide safety. As with all of Walther's high-quality handguns, it comes with a lifetime warranty for your peace of mind. The PK380 is sure to impress, no matter the situation.







THE ORIGINAL TACTICAL RIMFIRE.

Walther once again took the industry by storm with the introduction of the first polymer frame semi-auto rimfire pistol, the P22. The consistent reliability, timeless style, features, and outright affordability pushed this series to become the absolute standard. Best-in-class ergonomics, supported by interchangeable backstraps, establishes the P22 as one of the most comfortable handguns available today. Plus, an ambidextrous magazine release and slide safety make this pistol perfect for both right and left-handed shooters.



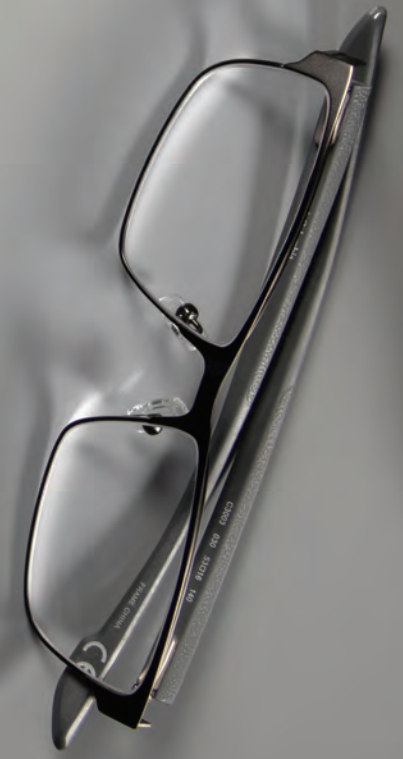




P22 Q

Originality at its finest. This firearm is a testament to a history of unprecedented achievement in both ingenuity and effectiveness. Able to surpass the expectations of modern shooters and define the competitive advantage only Walther can provide. The Walther P22 was the first polymer-framed, semi-auto tactical rimfire handgun ever made. Premium features such as windage adjustable rear sight, captured recoil spring, double-action/single-action trigger, and threaded barrel help to solidify this pistol as a leader in its class. The extremely reliable P22 is ready for anything from varmint control to recreational shooting. A rare feature for a rimfire, the P22 is covered by the Walther Legendary Lifetime Limited Warranty. This pistol is the premiere handgun for those seeking superior quality and performance from a tactical rimfire.







WE INVENTED CONCEALED CARRY.

Timelessness inspires true greatness. A groundbreaking idea now gives rise to the next level of achievement in unrivaled performance, delivering tried-and-true results when you need them most. Walther's industry-leading innovation takes the spotlight with their PPK model handguns. At the time of its invention over 80 years ago, the PPK inspired an entirely new category in the firearm industry, now widely known as the concealed carry pistol. To fill the need for performance in a concealable package, Walther broke the mold of pocket pistols and full-size military pistols to bring undercover officers a more practical option, the PPK. Chambered in .380 ACP, the PPK provides all the power needed in a self-defense pistol without sacrificing on critical functionalities.



| PPK - BLACK |



| PPK - STAINLESS |



| PPK/S - BLACK |



| PPK/S - STAINLESS |



| PPK/S .22 - BLACK |



| PPK/S .22 - STAINLESS |





PPK

Walther's industry-leading innovation takes the spotlight with their PPK model handguns. At the time of its invention over 80 years ago, the PPK inspired an entirely new category in the firearm industry, now widely known as the concealed carry pistol. To fill the need for performance in a concealable package, Walther broke the mold of pocket pistols and full-size military pistols to bring undercover officers a more practical option, the PPK. It is chambered in .380 ACP, the PPK provides all the power needed in a self-defense pistol without sacrificing on critical functionalities. To execute this revolutionary concept, the Police Pistol Kriminal took all the modern advancements available at the time and combined them into one performance leading pistol. It features a double-action/single-action trigger that decocks when rotating the safety down into the safe position, first introduced by Walther.







PPK/S

An evolution of the classic PPK, the PPK/s maintains the timeless features, essence and the elegance of the original with an additional extended grip allowing for added capacity and improved ergonomics. To execute this revolutionary concept, the Police Pistol Kriminal took all the modern advancements available at the time and combined them into one performance leading pistol. It features a double-action/single-action trigger that decocks when rotating the safety down into the safe position, first introduced by Walther. Few guns have withstood the test of time like the brilliantly designed PPK. To this day, the PPK is still one of the most sought after concealed carry pistols on the market. This demand serves as a testament to Walther's long-enduring legacy of excellence and unparalleled performance. The timeless design and superior engineering make the PPK a true legend amongst firearms.







PPK/S .22

Walther's industry-leading innovation takes the spotlight with their PPK model handguns. A 1-to-1 scale of the Walther PPK/s in .380, this PPK/s .22LR affords you the look, style, and feel of the original in a rimfire caliber. Equipped with a single-action/double-action trigger, black checkered grips and functional safety/decocker, the PPK/s .22 is the perfect recreational firearm for any situation. This rimfire pistol comes with a threaded barrel direct from the factory, making it suppressor-ready out of the box. Walther's signature accuracy and reliability come standard whether you're shooting suppressed or unsuppressed. As with all Walther pistols, the PPK/s .22 also has a lifetime warranty to put your mind at ease while on the range all day. The remarkable elegance and performance distinguish the PPK/s .22 as the premiere rimfire pistol available today.







(photo courtesy of LiveShots.net)

SUCCESS

Team Walther has taken the shooting sports by storm, winning at the highest levels of USPSA, IDPA and 3-Gun competitions around the United States. Also, competing in IPSC competitions around the world. Hours upon hours of practice, thousands of rounds fired, multiple trophies acquired, but Team Walther's best attribute is their ability to communicate and show how great the shooting sports community can be by helping others at matches and being great people to squad with.

Check out the collection of hunting and shooting we offer.