

# AUTO

**Safari Rack**

**Urban Rack**

**Basket Racks**

**Stainless Steel Deck Rack**

**Hard Top Carrier**

**Bike Racks**



**Made in the USA**



# Safari Rack 5.0

**Flat out carries what you need to take**

- 5" deep basket
- ¾" Aluminum square tubing
- Durable black powder coat finish
- Easily assembled, no drilling
- Crossbars included
- Fits any factory rack
- Refer to application guide for part numbers and adapters



## Jeep Hard Top Carrier

**Safely store any hard top**

- Easy lightweight space-saving design
- Durable Black Powder Coat Finish
- Soft contact points: rubber/urethane/vinyl
- 4 wheels (2 locking) for easy maneuverability
- Adjusts to fit all Jeep models and years
- Patent Pending



HT200

## Jeep Hard Top Adapter

**Easy to secure any rack**

- No drilling for easy on/off removable application
- Attaches to Jeep Wrangler hard top
- 3 part numbers to cover all years
- Works with Safari and Urban rack crossbars
- Patent Pending

J400 | 1987 - 1995 YJ  
J500 | 1997 - 2006 TJ  
J600 | 2007 - 2012 JK







**Spare Tire Adapter**  
Keep your spare in the air



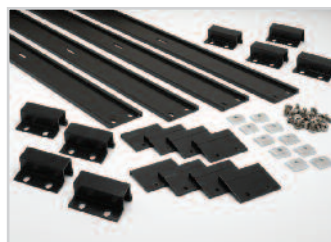
**Hi-Lift Adapter**  
Isolate your hi-lift jack



**Safari Light Adapter, Pair**  
Need more light?



**Axe & Shovel Carrier**  
Keep your axe & shovel out of the way



**Safari Rack Floor Kit**  
Add additional floor slates



**Safari Crossbars, Pair**  
Durable black powder coat finish

## OSI Bike Rack

### Haul your bikes with your hitch

Rack moves out of the way and top arm swings independently (DBR300)

Carries up to 3 or up to 4 bikes

Top plate secures & locks bikes

Bikes are securely gripped in a non-scratch padded channel

Heavy duty steel construction

2" or 1 1/4" receiver, drawbar, or ball mount applications available

other models available



BT300



BRF300



DBR300

## Bike Rack Accessories



### Expander

Converts 1 1/4" receiver to 2" receiver

E300 | 1 1/4" to 2" adapter



### Extender

Extends 2" receiver to clear rear mounted spare tires

E100 | 12", 2" receiver

E200 | 8", 2" receiver



### Eliminator

Prevents any rattling between rack and hitch

AS100



### RV Adapter

Mounts to 4"x4" square RV bumper

Accepts all 2" receiver applications

B100



### Conversion Bar

For womens, full suspension or BMX bikes

A100

## Hauler Basket Carrier

### Haul a load with your hitch

Carry up to 500 lbs

Heavy duty steel construction

Durable black powder coat finish

1200 | 20"x48", 1 1/4" receiver, 1 piece

1202 | 20"x48", 2" receiver, 1 piece

1204 | 20"x60", 2" receiver, 1 piece



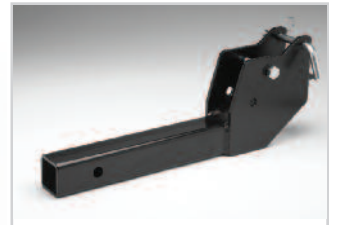
1201 | 20"x48", 1 1/4" receiver, 2 piece

1203 | 20"x48", 2" receiver, 2 piece

1205 | 20"x60", 2" receiver, 2 piece



2 piece



1206 | Universal Fold Up Adapter



1 piece



1206 | Universal Fold Up Adapter



## Urban Rack

The perfect combination of style and functionality

4" deep basket

All aluminum construction

In smooth satin anodized finish or durable black powder coat finish

Black powder coat rounded corners

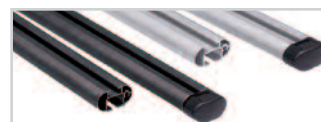
Easily assembled, no drilling

Crossbars included

Refer to application guide for sizes and adapters



**Urban Light Adapter**  
Need more light?



**Crossbars**  
Need crossbars?

## Track Mounts

For factory racks with tracks

Adapter slides into any factory track (see application guide)

Use adapter with Surco's Roof Rails  
Durable black powder coat finish



## Specialty Adapters

For factory roof racks

For proper fit see application guide

Durable black powder coat finish

Durango, Elevated, Honda, Jeep, Pathfinder, RAV 4, Trooper, Thule, Yakima



## Gutter Mount Adapter

Raingutters welcome

Fastens to any vehicle with rain gutters (see application guide)

Durable black powder coat finish



## Clamp Mounts

For factory racks with elevated rails

Clamps on to any factory elevated rail

## Roof Rider Roof Rails

No factory rack, no problem

Aluminum rail attaches to any roof

Durable black powder coat finish

Special Hardware kit included for easy installation (drilling required)

Refer to application guide for sizes



## Wheel Chock

Transport a Motorcycle

Secure a motorcycle/ATV on trailers/trucks

Heavy duty construction with electro-polished finish or black powder coat finish

Easy on-off application

3601 | Stainless Steel  
3602 | Black Powder Coated



## Aluminum Tracks

Instant adjustable tie-down

Instant, adjustable tie-down solution

Sloped design allows easy snag-free use of any truck bed or trailer

1/2" low profile heavy gauge aluminum track saves valuable space

Unlimited adjustments at every 1"

Tracks securely mount anywhere: truck beds, bed rails, trailers, RVs Vans, even garage walls and benches

Combine tracks for custom lengths



3515 | End Cap



3510 | Single Anchors  
3511 | Double Anchors



3501 | 4' Cargo Track Pair  
3502 | 6' Cargo Track Pair  
3503 | 8' Cargo Track Pair  
3504 | 12' Cargo Track Pair

## Stainless Steel Deck Rack

### No trunk space, no problem

Create more space for luggage and hauling other things

Fully removable

Padded feet protects trunk

Heavy duty stainless steel

Electro-polished finish for an everlasting shine

Fully assembled



DR1001



DR1000



DR1003

## Hard Top Carrier

### A garage must-have

Lightweight space-saving design

Durable black powder coat finish

Adjusts to fit most removable hard tops

Soft contact points: rubber/urethane/vinyl

4 wheels (2 locking) for easy maneuverability in the garage



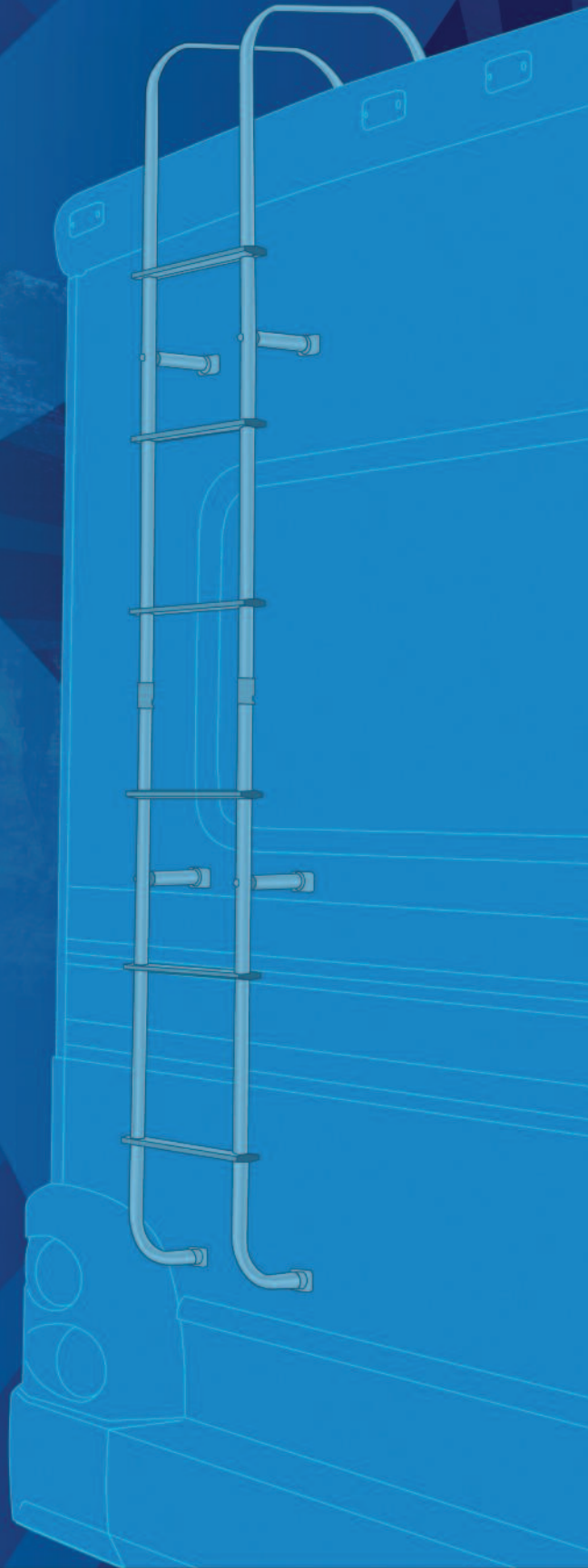
HT100





# RV

**RV Ladders**  
**Bunk Ladders**  
**Bike Racks**  
**Van Ladders**  
**Basket Racks**



**Made in the USA**

 **SURCO**  
PRODUCTS, INC.

## Universal RV Ladder

No RV is complete without ONE

Adaptable to any manufactured RV  
Heavy gauge 1" aluminum  
Bright dipped polish finish  
Custom designs available



**Unique Hinges**  
Adjust to the contour of RV



**Wide Steps**  
Non-slip texture



**Stand-off Supports**  
4 supports placed anywhere

501L | Hinged RV Ladder  
502L | Straight RV Ladder

## Ladder & Mini-Ladder Extension

Extend your ladder's capability

Fits on RV ladder  
Get easier access to your RV ladder  
Ladder fully extends to the ground  
Twisting hooks, easy on-off installation  
Non-slip, wide steps  
Heavy gauge aluminum  
Bright dipped polished finish  
Light weight and easy to handle  
Fully assembled, no tools required



503L | Ladder Extension  
504L | Mini-Ladder Extension

## Ladder Mounted Bike Rack & Chair Rack

Put your ladder to good use

Fits on any 1" van or RV ladder  
Heavy gauge 1" aluminum  
Smooth satin anodized finish  
Light weight and easy to handle  
Fully assembled  
Bike Rack carries up to 2 bikes  
Chair Rack carries up to 6 chairs

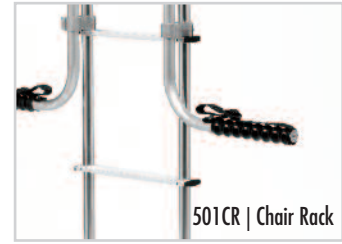


501BR | Bike Rack

**Bike Rack Pivoting Arms**  
Allow easy access to use the ladder



**Rack Mounts**  
No need for straps or removal



501CR | Chair Rack

**Chair Rack Pivoting Arms**  
Allow easy access to use the ladder

Safety pin securely holds rack in open or closed position.

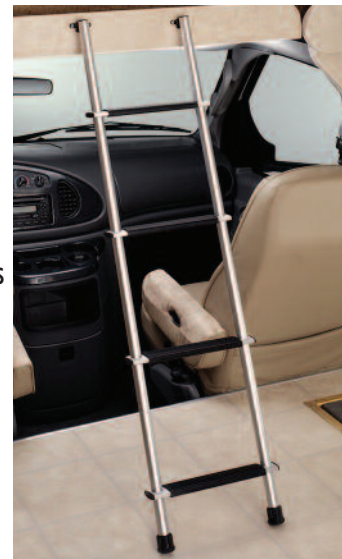


## Bunk Ladder

Easiest way to get to bed

Get easy access to RV bunk bed  
Heavy gauge 1" aluminum  
Bright dipped polish finish  
Nylon padded steps for comfort  
Padded feet grip & protect surfaces  
3 different style hooks  
Fully assembled

501B | 60" Bunk Ladder, 1" Hook  
502B | 66" Bunk Ladder, 1" Hook  
503B | 60" Bunk Ladder, 1 1/2" Hook  
504B | 66" Bunk Ladder, 1 1/2" Hook  
505B | 60" Bunk Ladder, Hook Retainer  
506B | 66" Bunk Ladder, Hook Retainer





## Aluminum Tracks

### Instant adjustable tie-down

Instant, adjustable tie-down solution  
Sloped design allows easy snag-free use of any truck bed or trailer

1/2" low profile heavy gauge aluminum track saves valuable space

Unlimited adjustments at every 1"

Tracks securely mount anywhere: truck beds, bed rails, trailers, RVs Vans, even garage walls and benches  
Combine tracks for custom lengths



3515 | End Cap

### End Caps

Seamless finish with track



3501 | 4' Cargo Track, Pair  
3502 | 6' Cargo Track, Pair  
3503 | 8' Cargo Track, Pair  
3504 | 12' Cargo Track, Pair



3510 | Single  
3511 | Double

### Anchors

Slide anywhere, locks into place

## Wheel Chock

### Transport a Motorcycle

Secure a motorcycle or ATV on trailers/trucks

Heavy duty construction with electro-polished finish or black powder coat finish

Easy on-off application



3601 | Stainless Steel  
3602 | Black Powder Coated

## OSI Bike Rack

### Haul your bikes with your hitch

Rack moves out of the way and top arm swings independently (DBR300)

Carries up to 3 or up to 4 bikes

Top plate secures & locks bikes

Bikes are securely gripped in a non-scratch padded channel

Heavy duty steel construction

Durable black powder coat finish

2" or 1 1/4" receiver or ball mount, applications available

Other models available.



DBR300



DBR300



BRS300

## Hauler Basket Carrier

### Haul a load with your hitch

Carry up to 500 lbs

Heavy duty steel construction

Durable black powder coat finish

Break down for easier storage

1200 | 20"x48", 1 1/4" receiver. 1 piece.

1202 | 20"x48", 2" receiver. 1 piece.

1204 | 20"x60", 2" receiver. 1 piece.



1201 | 20"x48", 1 1/4" receiver. 2 piece.

1203 | 20"x48", 2" receiver. 2 piece.

1205 | 20"x60", 2" receiver. 2 piece.



1206 | Universal Fold Up Adapter



1206 | Universal Fold Up Adapter

## Bike Rack Accessories

### Expander

Converts 1 1/4" receiver to 2" receiver

E300 | 1 1/4" to 2" adapter



### Extender

Extends 2" receiver to clear rear mounted spare tires

E100 | 12", 2" receiver

E200 | 8", 2" receiver



### Eliminator

Prevents any rattling between rack and hitch

AS100



### RV Adapter

Mounts to 4"x4" square RV bumper

Accepts all 2" receiver applications

B100



### Conversion Bar

For womens, full suspension or BMX bikes

A100



## Stainless Steel Ladder

### Utilize your van roof

Heavy duty stainless steel with Electro-polished finish  
Over-the-door hooks  
Non-slip surface on steps  
Models available to fit all vans

093 | Stainless Steel Ladder  
093C97 | Chevy 1997 - current  
093F | Ford up to 1998  
093F99 | Ford 1999 - current  
093NV | Nissan NV Short roof **NEW**  
093NVL | Nissan NV High Roof **NEW**  
093S | Sprinter up to 2006  
093S7 | Sprinter 2007 - current  
093SL | Sprinter high top up to 2006  
093SL7 | Sprinter high top 2007 - current



## Aluminum Ladder

### Strong & Lightweight

Thick gauge aluminum tubing  
Bright dipped polished finish  
No welds with all stainless steel mounting parts  
Flat groove non-slip steps  
Over-the-door hooks or Universal mount  
Fits all Dodge, Ford, Chevy and GMC vans

103 | Ladder  
103B | Black  
103-1 | Wide Step  
103H | Hook-over Ladder  
103HF | Ford Hook-over Ladder  
200C | Chevy Astro



## Van Racks

### Stainless Steel Roof Rack

### Utilize your van roof

Heavy duty stainless steel  
Polished finish for everlasting shine  
Special tie-down loops added for securing luggage



095

## Aluminum Roof Rack

### Maximize Roof Capacity

Thick gauge aluminum tubing  
Bright dipped polish finish  
No welds  
3-sided with 2" stanchions



104

## Van Tire Carrier

### Carry the spare tire on the rear door

One piece solid construction  
Manufactured from heavy duty steel  
Durable black powder coat finish



TF100



TC100

TA100 | Chevy Astro  
TC100 | Chevy  
TD100 | Dodge  
TD100S | Dodge single door  
TF100 | Ford  
TF200 | Ford 1992-current, Chevy 2003-current  
TS100-B | Sprinter

## Universal RV Rack

### Lock down your cargo

Adaptable to any RV or camper  
Heavy gauge 1" aluminum  
Bright dipped polish finish  
6" high stanchions



501R | RV Rack