

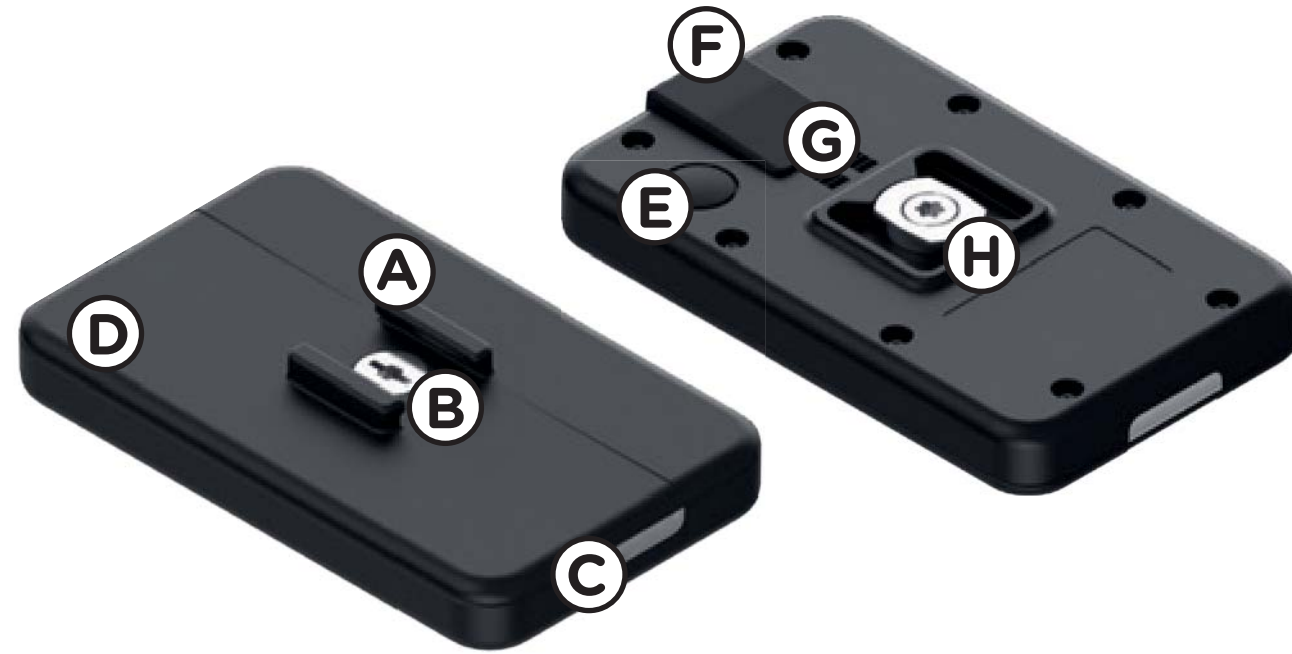


WIRELESS CHARGING MODULE

Mounting instructions

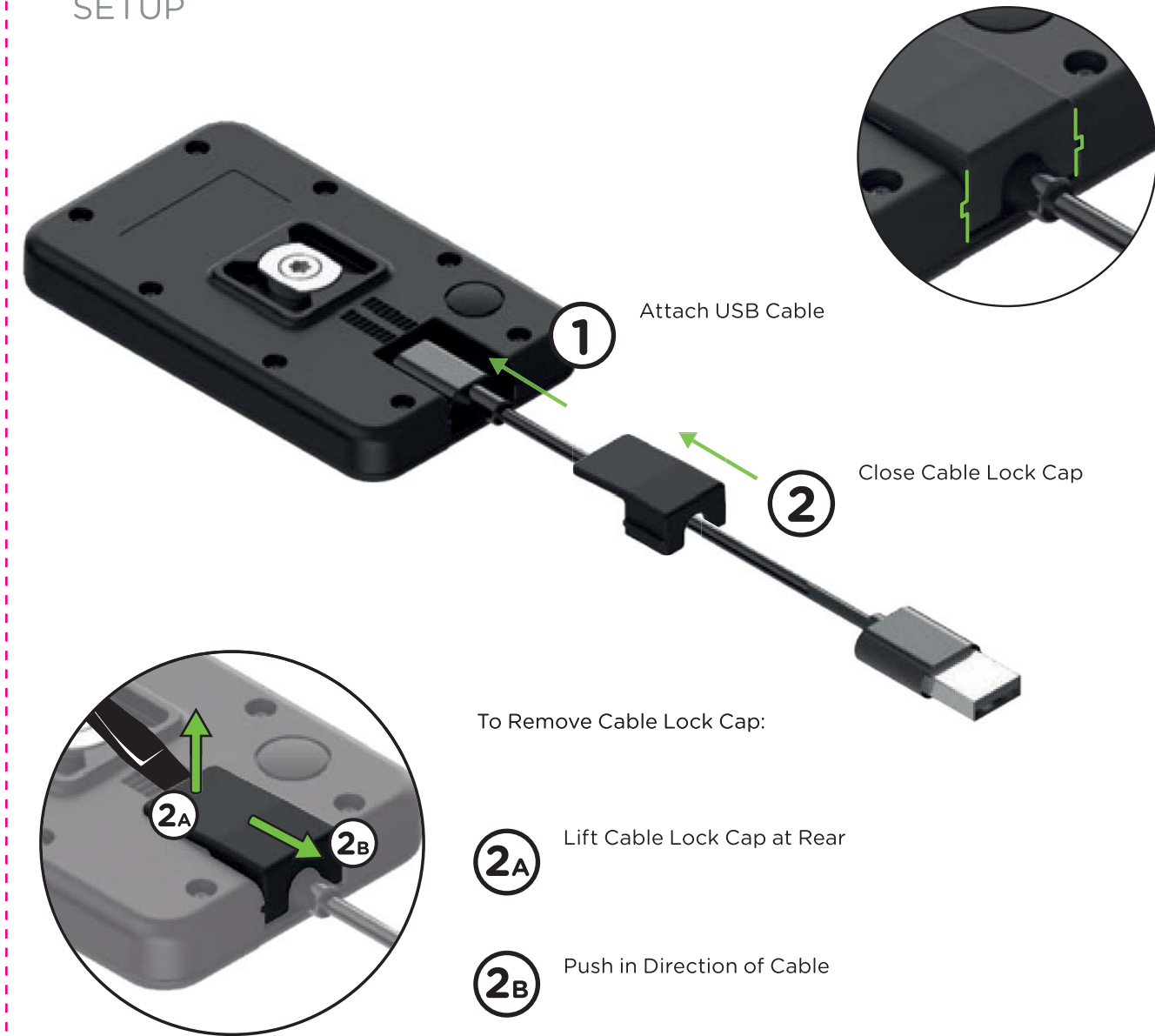


DESCRIPTION



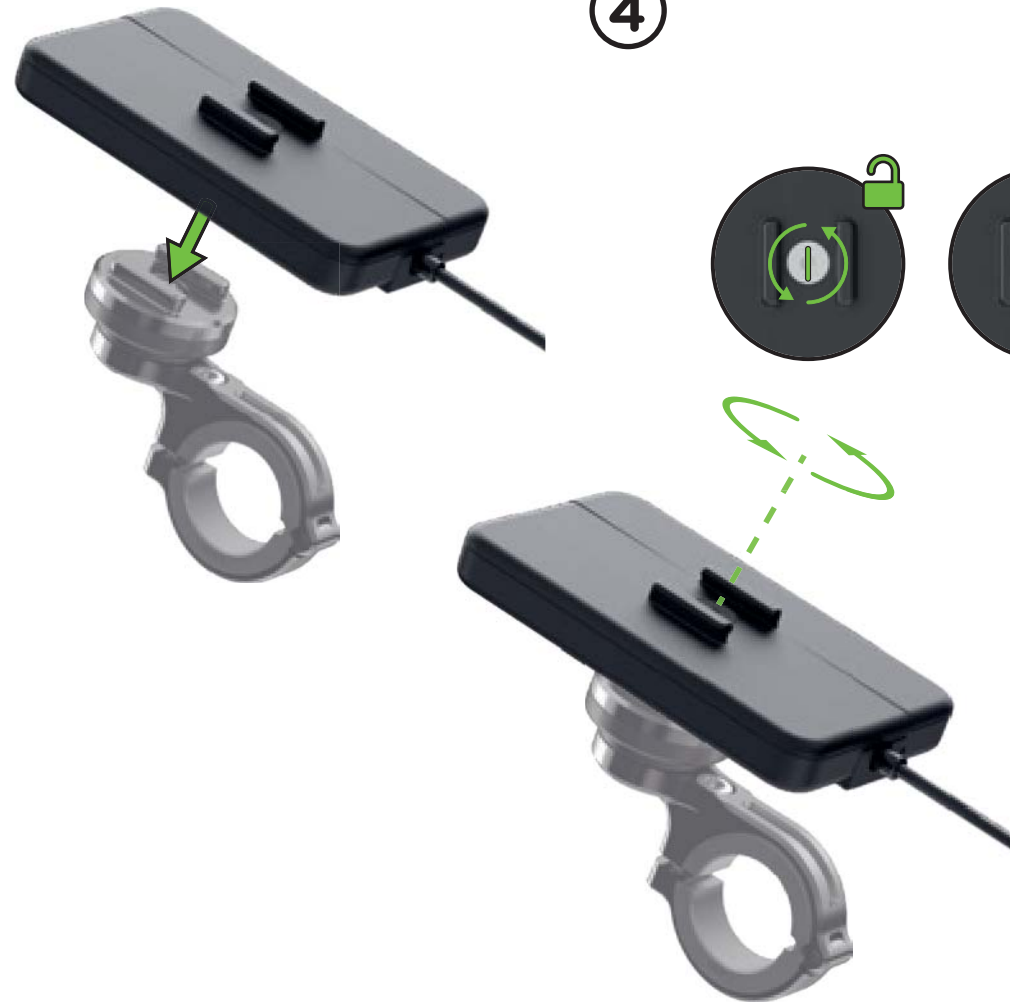
- A. MicroRails
- B. Locking Screw
- C. Red / Blue Status Light
- D. Water Resistant Housing
- E. Standby / Ready Button
- F. Cable Lock Cap
- G. Waterproof (IP-X7) USB-C Port
- H. Locking Mechanism

SETUP



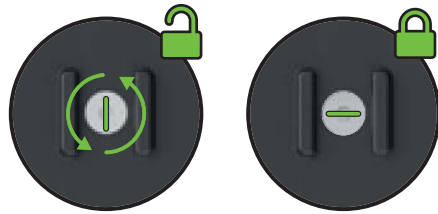
3

Place Module on SP Connect Mount



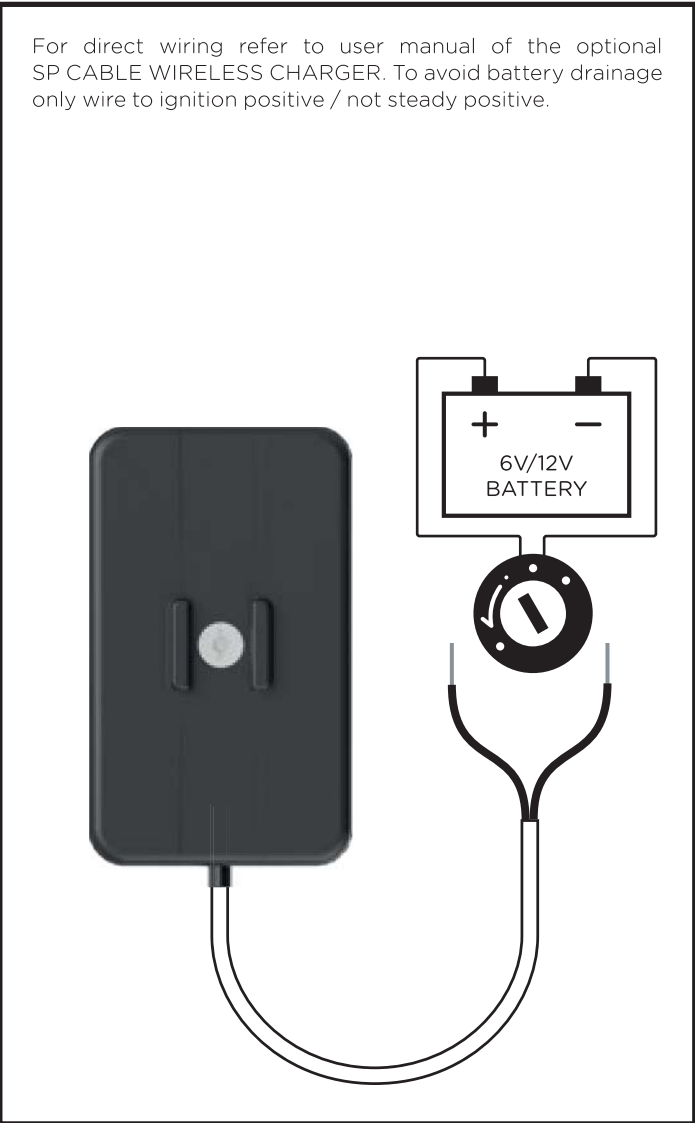
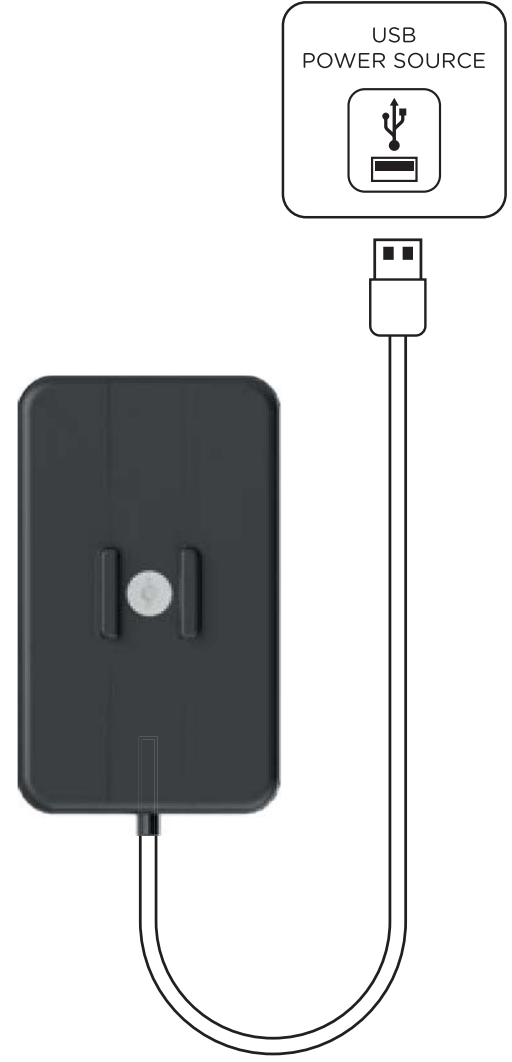
4

Use Tool to turn Screw 90°



5

Connect to USB Power Source using USB-C to USB Cable included

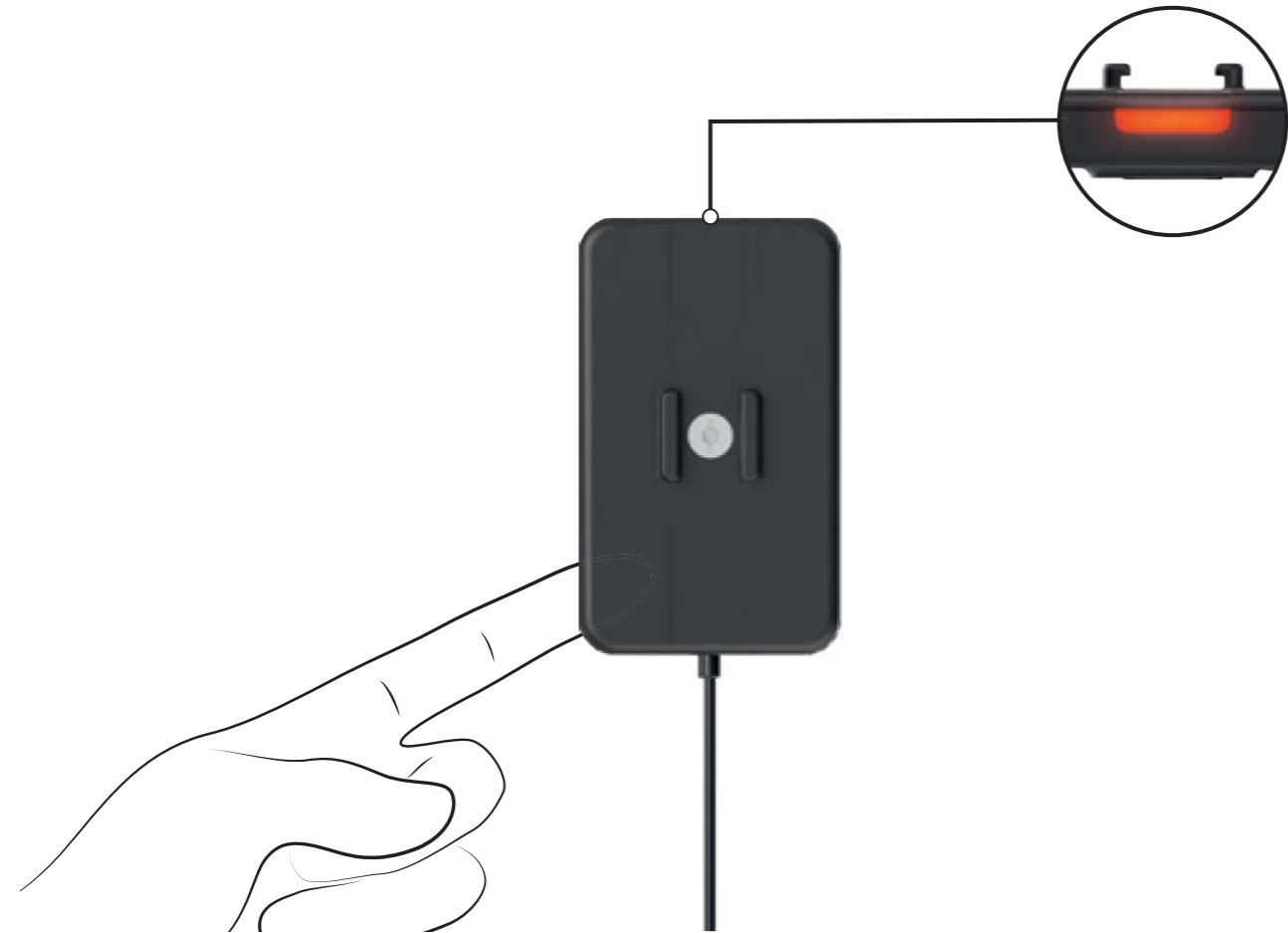


MODE	FUNCTION
RED	Ready
BLUE	Charging phone
BLUE Flash	Phone detected, not charging. Check powersource (i.e. battery, socket type), cable or connections.

HOW TO USE

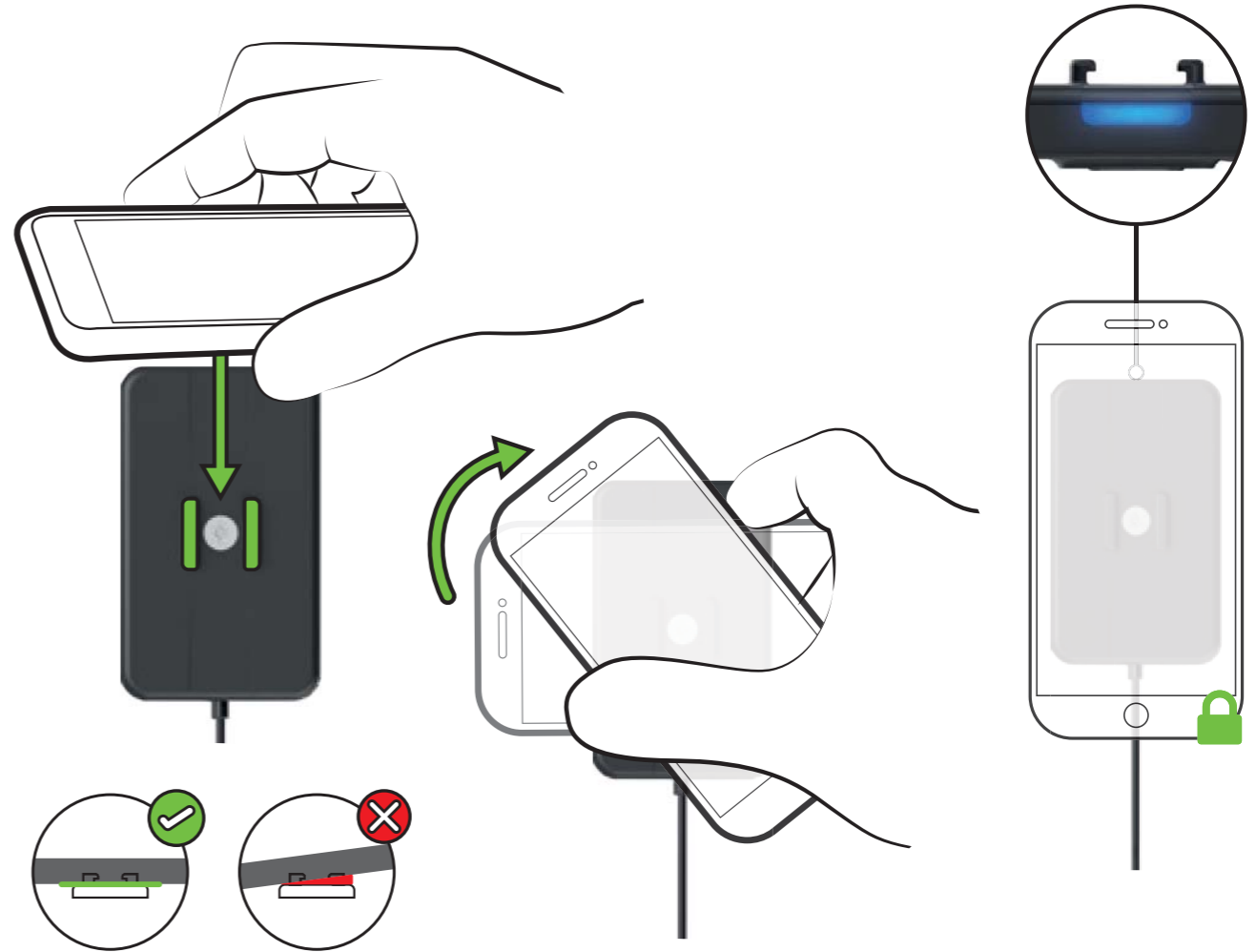
6 Turn On Using Button Underneath - LED Red: Module Ready for Charging.

6A Auto-Ready when power source is turned on (i.e. ignition, ...)



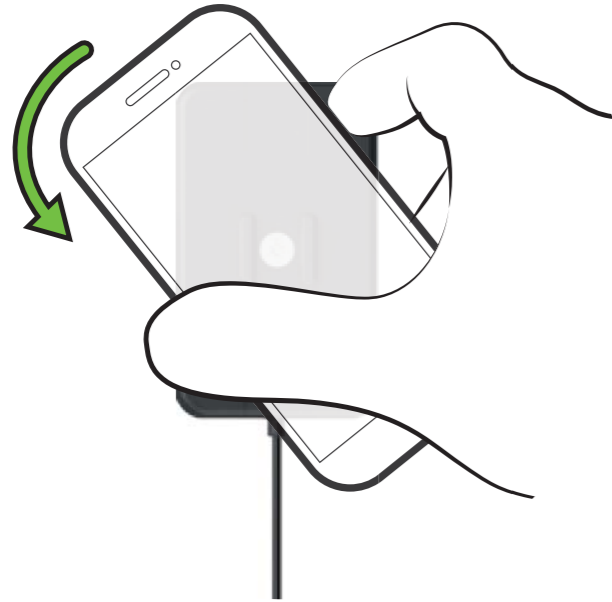
7 Place Phone on MicroRails & Turn 90° to Lock - LED Blue: Phone Charging.

*Note: If Light Blinks Blue, Check Powersource for Possible Malfunction.



8

Remove Phone by Turning 90° - LED Red: Ready.



9

Use Button Underneath for Standby Mode Auto standby after 10 minutes of inactivity

EN: IP65 RATED - No ingress of dust; complete protection against contact (dust tight).

Water projected by a nozzle (6.3 mm) against enclosure from any direction shall have no harmful effects.

Minimum operating temperature: 0°C / 32°F

FCC STATEMENT

1. This device complies with Part 15 of the FCC Rules. Operation is subject to the following two conditions:

(1) This device may not cause harmful interference, and

(2) This device must accept any interference received, including interference that may cause undesired operation.

2. Changes or modifications not expressly approved by the party responsible for compliance could void the user's authority to operate the equipment.

NOTE: This equipment has been tested and found to comply with the limits for a Class B digital device, pursuant to Part 15 of the FCC Rules. These limits are designed to provide reasonable protection against harmful interference in a residential installation.

This equipment generates uses and can radiate radio frequency energy and, if not installed and used in accordance with the instructions, may cause harmful interference to radio communications.

However, there is no guarantee that interference will not occur in a particular installation. If this equipment does cause harmful interference to radio or television reception, which can be determined by turning the equipment off and on, the user is encouraged to try to correct the interference by one or more of the following measures:

Reorient or relocate the receiving antenna.

Increase the separation between the equipment and receiver.

Connect the equipment into an outlet on a circuit different from that to which the receiver is connected.

Consult the dealer or an experienced radio/TV technician for help.

FCC Radiation Exposure Statement

This equipment complies with FCC radiation exposure limits set forth for an uncontrolled environment. This equipment should be installed and operated with minimum distance 20cm between the radiator & your body

Fast Charger* - Use of QC2 charger plugs recommended. Auto standby after 10 minutes of inactivity.

Attention! Standby power drain: 20mA.

Input: 5V/1,5A | 9V/1,7A. Output: Max. 10W.

* Fast charging requires fast charging or quick charge 2.0 compatible smartphone to work. Testing under laboratory conditions. Results may vary. Charging capacity depends on factors such as network configuration, signal strength and operating temperature.

EN: Keyless ignition systems can be affected due to overlapping frequency channels.

If ignition is not possible, remove the phone or press the standby button to stop the charging process. To avoid interference when starting, start ignition before attaching smartphone to Wireless Charging Module.

