

ERGO 5 MATT



SIZE	38-38,5-39-39,5-40-40,5-41-41,5-42-42,5-43-43,5-44-44,5-45-45,5-46-46,5-47-48
UPPER	MICROFIBRE TECHPRO MATT
SOLE	TWELVE CARBON COMPOSITE SOLE



COLOUR



MATT RED | BLACK



MATT BLACK



MATT ORANGE / BLACK

TECNOLOGY

TWELVE CARBON COMPOSITE SOLE

-- TWELVE CARBON COMPOSITE sole is made with two different materials blended together, nylon and carbon fibre. It is made out of injected Carbon Fiber in a matrix of Nylon. The Nylon used doesn't absorb water and doesn't lose rigidity in hot or humid weather or as it ages. The result is a significantly lighter and stiffer sole.

SOFT INSTEP CLOSURE SYSTEM

-- The SOFT INSTEP CLOSURE SYSTEM is a wide, anatomically curved strap combined with a soft, thermo-formed EVA pad that distributes pressure evenly over the instep area. The SOFT INSTEP CLOSURE SYSTEM is adjustable from both sides, to perfectly center the EVA pad over a high or low instep. The system eliminates the need for the High Instep Extender. The SOFT INSTEP CLOSURE SYSTEM is replaceable.

SOFT INSTEP 4



TECNO-3 PUSH

--SIDI's TECNO-3 PUSH dials in fit along the entire length of the shoe, adapting the upper to the shape of the foot for a customized fit. SIDI's famously reliable and replaceable closures are improved by an all new proprietary SIDI Wire material that is completely non-binding for intuitive and effortless on-the-fly adjustments. Like most SIDI small parts, the TECNO-3 PUSH buckle is serviceable and replaceable. It can be adjusted while riding, thanks to an innovative button which can be pushed to lift the buckle and facilitate the adjustment.



HIGH SECURITY HOOK AND LOOP FASTENER

-- HIGH SECURITY HOOK AND LOOP straps with integrated locking polymer teeth, that engage onto each other when the strap is closed. This feature makes the closure more secure and the strap becomes unmoveable.



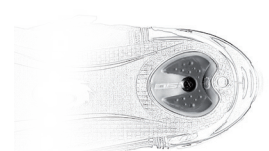
SIDI HEEL CUP

-- Reinforced cup that stabilizes and supports the heel. Anatomically shaped plastic, reduces heel slip and provides increased power transfer. Provides additional foot protection in the event of a crash.



REPLACEABLE HEEL PAD

-- For walkability, Sidi cycling shoes include a replaceable polyurethane heel pad.



Microfibra Techpro

MICROFIBRA TECHPRO is a microfiber PU Made in Italy. It is considered a highly technological and innovative, eco-friendly leather suitable for technical and sports products which require high performance levels. TECHPRO MICROFIBER incorporates features of resistancy, stability, lightness, water-repellency and eco-friendliness.

TECHPRO MICROFIBER has a Hydro and anti-mold treatment, which eliminates the onset of molds and bacteria. TECHPRO MICROFIBER is Oeko-Tex certified, does not contain harmful substances and respects law restrictions.

Suola Twelve Carbon Composite

TWELVE CARBON COMPOSITE sole is made with two different materials blended together, nylon and carbon fibre. It is made out of injected Carbon Fiber in a matrix of Nylon. The Nylon used doesn't absorb water and doesn't lose rigidity in hot or humid weather or as it ages. The result is a significantly lighter and stiffer sole.

