

ALBA 2 WOMAN



<b>SIZE</b>	36-37-38-38,5-39-39,5-40-40,5-41-41,5-42-42,5-43
<b>UPPER</b>	POLITEX UPPER
<b>SOLE</b>	MILLENNIUM 4 CARBON COMPOSITE SOLE
<b>FITTING</b>	WOMAN



COLOUR



WHITE | WHITE

BLACK | BLACK

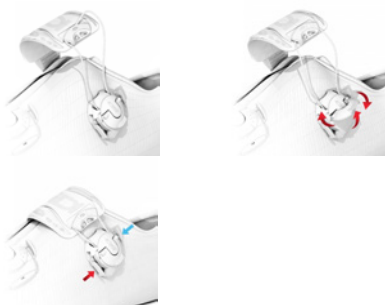
TECNOLOGY

**MILLENNIUM 4 CARBON SOLE**

-- The MILLENNIUM 4 CARBON COMPOSITE Sole features injected carbon fiber in a matrix of Nylon, providing more rigidity than a standard nylon sole. The MILLENNIUM 4 CARBON COMPOSITE Sole is also more durable, completely non water-absorbent and mechanically stable, meaning it's less susceptible to changes in stiffness resulting from aging, prolonged usage, and changes in temperature or humidity. An anti-slip toe insert and replaceable polyurethane heel pad are incorporated into the MILLENNIUM 4 CARBON COMPOSITE Sole, for walkability. The MILLENNIUM 4 CARBON COMPOSITE Sole uses a standard 3-hole drilling pattern for compatibility with the best pedal systems available, and includes a printed 10 mm lateral and fore/aft cleat alignment scale on the sole as well as the Look Memory Eyelet for easy cleat alignment and replacement.

**TECNO-3 SYSTEM**

-- SIDI's TECNO-3 SYSTEM dials in fit along the entire length of the shoe, adapting the upper to the shape of the foot for a customized fit. SIDI's famously reliable and replaceable closures are improved by an all new proprietary SIDI Wire material that is completely non-binding for intuitive and effortless on-the-fly adjustments. Like most SIDI small parts, the TECNO-3 SYSTEM is serviceable and replaceable.



**SOFT INSTEP CLOSURE SYSTEM**

-- The SOFT INSTEP CLOSURE SYSTEM is a wide, anatomically curved strap combined with a soft, thermo-formed EVA pad that distributes pressure evenly over the instep area. The SOFT INSTEP CLOSURE SYSTEM is adjustable from both sides, to perfectly center the EVA pad over a high or low instep. The system eliminates the need for the High Instep Extender. The SOFT INSTEP CLOSURE SYSTEM is replaceable.

**SOFT INSTEP 3**



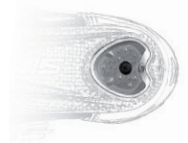
**SIDI HEEL CUP**

-- Reinforced cup that stabilizes and supports the heel. Anatomically shaped plastic, reduces heel slip and provides increased power transfer. Provides additional foot protection in the event of a crash.



**REPLACEABLE HEEL PAD**

-- For walkability, Sidi cycling shoes include a replaceable polyurethane heel pad.



### Materiale Politec

The "politec" material is constructed of several overlapping layers with different physical-mechanical properties, the compacted PVC is then coupled to two fabrics (knitted fabric + felt) that is then is film dyed for long-lasting color retention. "Politec" offers strong resistance to ripping, laceration, stretching and fading. "Politec" is made in strict compliance with European regulations and is a totally "green" product.

### Tallone Sidi

The reinforced heel keeps the foot in a optimal position and avoids the shoe being deformed by extreme performance or prolonged pressure.



### Suola Millennium 4 Carbon Composite

The MILLENNIUM 4 CARBON COMPOSITE SOLE features injected carbon fiber in a matrix of Nylon, providing more rigidity than a standard nylon sole. The MILLENNIUM 4 CARBON COMPOSITE SOLE is also more durable, completely non water-absorbent and mechanically stable, meaning it's less susceptible to changes in stiffness resulting from aging, prolonged usage, and changes in temperature or humidity. An anti-slip toe insert and replaceable polyurethane heel pad are incorporated into the MILLENNIUM 4 CARBON COMPOSITE SOLE, for walkability. The MILLENNIUM 4 CARBON COMPOSITE SOLE uses a standard 3-hole drilling pattern for compatibility with the best pedal systems available, and includes a printed 10 mm lateral and fore/aft cleat alignment scale on the sole as well as the Look Memory Eyelet for easy cleat alignment and replacement.



### Calzata Donna

WOMAN'S SPECIFIC

- Tapered last mimics a women's more tapered foot shape
- Narrower across the ball of the foot
- Less volume, on the instep area and a narrower heel cup

