

**RAVE SPORTS®  
COMMERCIAL DIVISION**

**RAVE**  
SPORTS®

**OFFER FUN EXPERIENCES  
AND ATTRACT MORE VISITORS**



# CONTENTS

Obstacle Courses	2
Nautilus	7
Power Tower	8
Ninja Quad Steps	9
Full Tilt	10
Aqua Totter	11
Arch Bridge 1.5	12
Ascent Slide	13
Shoreline Slide	14
Odyssey	15
Iceberg	16
Spin Wheel	17
Aqua Jump Eclipse	18
Classic Aqua Jump	19
Bongo Bouncers	20
Water Whoosh	21
Attachments	22
Course Components	27
Turbo Chute	31
Waterboggans	32
Impact PCX SUP	33
Aqua Power	34
Accessories	35
Product Summary	36
Warranty/Service	42

## RAVE SPORTS® 2019 COMMERCIAL PRODUCT GUIDE

For over 20 years, we've been serving the camps, resorts, water parks, and parks and recreation markets with innovative, high-quality inflatable waterfront systems. Our customers enhance their waterfronts and pools with fun attractions that impact camper experiences, create new attractions, and draw more visitors.

Our newest 2019 additions include Splash Trax components built for creating large floating obstacle courses that American Ninja Warrior® fans will love! Being able to provide high-quality unique attractions like these will take your waterfront or commercial pool to the next level.





# OBSTACLE COURSES

RAVE Sports inflatable waterpark systems offer endless creative combinations with pieces that are free-standing, connected into obstacle course systems, or a combination of connected and free-standing pieces. We partner with our customers to build systems that fit their waterfront or pool, budget, number of users, and abilities.

Creating a unique and versatile inflatable waterpark system is important to our customers so they can offer innovative attractions that will offer fun experiences and attract more visitors. When we begin working with our customers, we will ask questions such as these:

## WHAT ARE YOUR GOALS?

Are you looking to have a better installation than your competition? Generate more revenues? Attract more campers or visitors? Add programming options?

## WHAT SPACE IS AVAILABLE?

What are the parameters of your waterfront or pool, such as water depth, feet of lakeshore, conditions of the beach area, size of pool, and number of users anticipated per hour/day?



## WHAT IS YOUR BUDGET?

RAVE Sports works with you to provide standalone signature pieces or complete obstacle courses tailored to your unique environment.

## ANY OTHER CONSIDERATIONS?

What other issues are important, such as safety, quality, installation and storage, and customer support? Our goal is to be your partner to ensure your water attraction is successful.



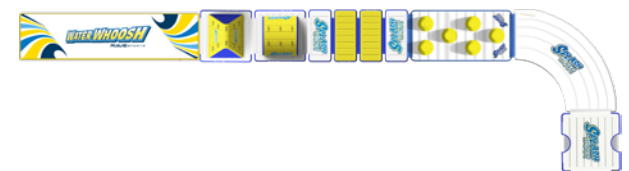
# OBSTACLE COURSES

## WHERE DO I START?

Our products range from stand-alone signature pieces and trampolines to complete obstacle course systems created by combining numerous components into systems that can be built over time. This allows RAVE Sports customers to evolve their waterfronts and pool parks to meet changing demographics and budgets.

## EVOLVE OVER TIME:

### STAGE 1

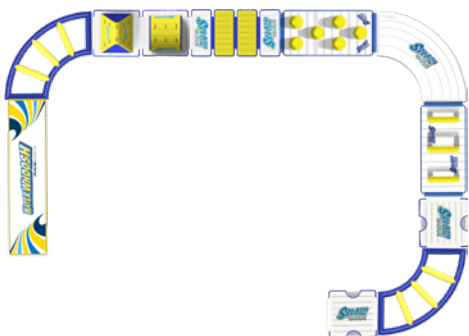




**PERFECT FOR CAMPS,  
COMMUNITY CENTERS  
& RESORTS!**

**RAVE SPORTS WORKS WITH YOU TO BUILD OVER TIME WHILE PROVIDING A FANTASTIC JOURNEY**

**STAGE 2**



**STAGE 3**



**STAGE 4**





# OBSTACLE COURSE PACKAGES

## LOOKING FOR AN ADDITIONAL ACTIVITY TO OFFER?

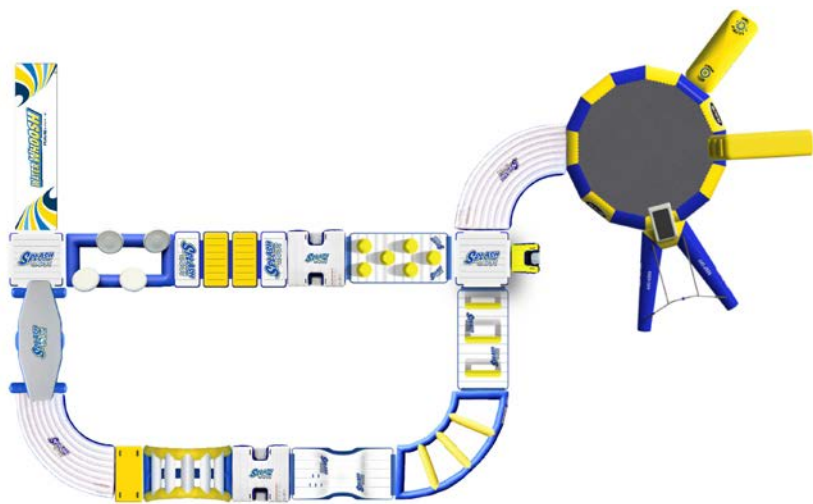
How about a Ninja-style obstacle course on your waterfront! Create team or individual challenges that will build confidence and endurance, promote teamwork, and reward achievement with RAVE's obstacle course system. Start by checking out our package examples and then contact us for more information about these packages or to create your own unique design today!



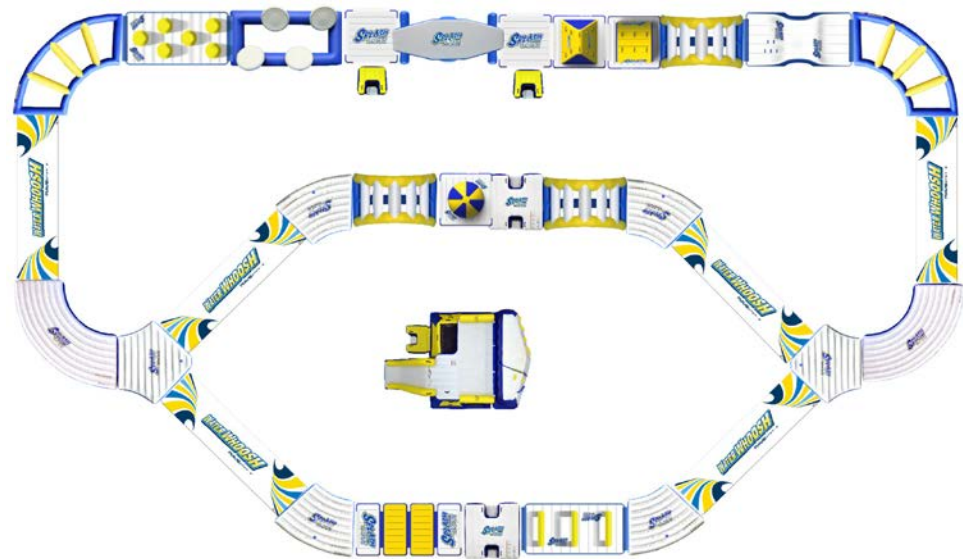
This smaller low-profile configuration is nearly 70 feet long and can handle 10-15 people at a time.



This suggested medium-sized configuration is 90' x 50' and is a 40 person course. It provides stellar fun for all thrill seekers.



This sample configuration includes a water bouncer and is 100' x 60' with a 35 person capacity. It combines an exciting obstacle course with our 20' bouncer, launch, slide and rope swing.



This large configuration is 115' x 70' and supports 65 people in an endless course. From small to large courses, RAVE Sports is your #1 resource for waterfronts and pools.



# NAUTILUS™



## MAX THRILL FACTOR! CLIMB. SLIDE. JUMP. REPEAT.

This massive mountain combines three popular activities in one: mountain climbing, cliff jumping, and sliding! The Nautilus features 37 climbing handles with a 10-foot inversion wall adding an extra challenge. From the large upper deck, users can cliff jump off or slide down the drop slide or speed slide. The Nautilus can be installed as a signature stand-alone piece, or can be attached to Splash Trax modular components or to a Water Whoosh.

<b>Inflated Size</b>	28' x 25' x 15' (8.5 m x 7.6 m x 4.6 m)
<b>Users</b>	10-15
<b>Product Weight</b>	1124 lbs (510 kg)
<b>Water Depth</b>	10' (3 m)
<b>Anchor Points</b>	4
<b>Connects to</b>	Water Whoosh, Splash Trax
<b>Item #</b>	02810





ITEM #02900



ITEM #02855



# POWER TOWER™



## NEW! THIS ONE DOES IT ALL...

Climb, speed slide, jump onto a mega Power Tower Launch. This new Power Tower has muscle! Features include three free climbing “ladder” sides, play zone in mesh area below deck, and 55-degree speed slide for fast splashing into water. Users will also have a blast hanging out inside the power climb wall for added fun. Includes Quick Step Solo for easy boarding. Can also connect to Splash Trax components. Options Include Power Tower Launch, or Power Climb Wall. Both options include Quick Step Solo.

<b>Inflated Size (Only Power Tower)</b>	15.5' x 11.75' x 8.5' (4.7 m x 3.6 m x 2.6 m)
<b>Users</b>	8
<b>Product Weight</b>	297 lbs (135 kg)
<b>Water Depth</b>	8' (2.4 m)
<b>Anchor Points</b>	2 on Power Tower base, 1 on Speed Slide
<b>Connects to</b>	Water Whoosh, Splash Trax
<b>Item #</b>	02833 (Stand Alone Power Tower)
	02855 (Power Tower with Launch)
	02900 (Power Tower with Climbing Wall)



# NINJA QUAD STEPS™



## CHALLENGE YOUR INNER NINJA!

Designed as a component for a Splash Trax modular system, the distinctive new Ninja Quad Steps challenges aspiring ninja champions to leap from slanted step to step without falling into the water. Featuring four inflated disc steps positioned at a slant leaning into the open space below, this new obstacle requires thought and skill to overcome, but also offers great feeling of reward and accomplishment when mastered. Inflates quickly and easily connects to other Splash Trax modules utilizing Kwik-Lok straps and hook-and-loop strips for convenient, seamless and safe connections.

<b>Inflated Size</b>	<b>160" x 81" x 43" (4 m x 2 m x 1 m)</b>
<b>Users</b>	<b>1 (220 lbs)</b>
<b>Product Weight</b>	<b>77 lbs (34.9kg)</b>
<b>Water Depth</b>	<b>5' (1.5 m)</b>
<b>Connects to</b>	<b>Water Whoosh, Splash Trax</b>
<b>Item #</b>	<b>02901</b>



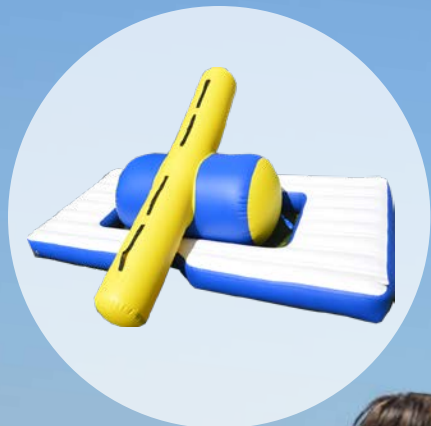
# FULL TILT™



## TEST YOUR BALANCE AND AGILITY

The new Full Tilt is the one and only component of its kind to test the balance and agility of adventurous campers and program attendees. Designed as a component for a Splash Trax modular system, the Full Tilt's ramp pivots on its base to tip up and down while users run, walk, or step from end to end. Ninja champions will spend hours building their skills by tilting back and forth, balancing on the pivot, challenging playmates, and making friendships with this new 13.5-foot component. Inflates quickly and easily connects to other Splash Trax modules utilizing Kwik-Lok straps and hook-and-loop strips covered with gap caps for convenient, seamless and safe connections.

<b>Inflated Size</b>	160" x 74" x 43" (4 m x 1.8 m x 1 m)
<b>Users</b>	1 (300 lbs)
<b>Product Weight</b>	96 lbs (43.5 kg)
<b>Water Depth</b>	5' (1.5 m)
<b>Connects to</b>	Water Whoosh, Splash Trax
<b>Item #</b>	02902



# AQUA TOTTER™



## WHO CAN HANG ON THE LONGEST?

Created as a component integrated into a Splash Trax modular system, the new Aqua Totter is an inflatable twist on the classic teeter totter. Users will test their strength and balance skills as they hang on tight and challenge their friends to move up and down and see who can hang on the longest before splashing into the water. This unique 13.5-foot component is comprised of a base unit that connects to other Splash Trax modules utilizing Kwik-Lok straps and hook-and-loop strips covered with gap caps for convenient, seamless and safe connections, and a totter unit that connects to the base with a simple strap configuration.

<b>Inflated Size</b>	160" x 126" x 45" (4 m x 3.2 m x 1.1 m)
<b>Users</b>	2 Adults or 4 Children
<b>Product Weight</b>	86 lbs (39 kg)
<b>Water Depth</b>	5' (1.5 m)
<b>Connects to</b>	Water Whoosh, Splash Trax, AJ150, AJ200
<b>Item #</b>	02903



# ARCH BRIDGE 1.5™



## CLIMB UP AND OVER!

The new Arch Bridge 1.5 obstacle super-sizes fun as aspiring ninja champions are tested to climb up, over, and across as part of an integrated Splash Trax modular obstacle course. Users will put their endurance, speed, strength, and agility to the test on this bridge that's anything but ordinary. Designed with a series of cross tube steps across an arch, this unique component is a fun challenge for all ages and abilities. Inflates quickly and easily connects to other Splash Trax modules utilizing Kwik-Lok straps and hook-and-loop strips covered with gap caps for convenient, seamless and safe connections.

<b>Inflated Size</b>	122" x 81" x 47" (3.1 m x 2 m x 1.2 m)
<b>Users</b>	2 Adults or 2 Children
<b>Product Weight</b>	59 lbs (26.8 kg)
<b>Water Depth</b>	5.5' (1.7 m)
<b>Connects to</b>	Water Whoosh, Splash Trax
<b>Item #</b>	02904



# ASCENT SLIDE



## A SLIDE AND HANGOUT SPOT IN ONE

NEW! Climb atop of the Ascent Slide, and swoosh down the other side or play and run through the hollow middle. The Ascent Slide is the perfect piece to do it all! Features a climbing side with 12 handles, a top platform, and a speed slide plus an interior play space. Can be used as a stand-alone piece or as a Splash Trax system component.

Inflated Size	17' x 7' x 7.7' (5 m x 2 m x 2.3 m)
Users	8
Product Weight	251 lbs (114 kg)
Water Depth	8' (2.4 m)
Anchor Points	4
Connects to:	Water Whoosh, Splash Trax
Item #	02834



# SHORELINE SLIDE™



## BEHOLD, THE MAIN ATTRACTION

NEW! Adds the “WOW!” factor to your beach. At 14 feet high, the enormous Shoreline Slide will be the main attraction for all ages attending your camp. Features two stairways with safety rope rails, a spacious top platform with mesh protection for safety and sun shade, and a 13 foot high slide to splash into the water. For maximum fun, Velcro® strap loops are located along the stair rail for a garden hose to connect to a drip/ spray bar above the top platform.

Inflated Size	47' x 9.5' x 20' (14.3 m x 2.9 m x 6.1 m)
Users	8
Product Weight	1545 lbs (700 kg)
Anchor Points	12 land anchor points
Item #	02840



# ODYSSEY™

## TAG YOU'RE IT!

Odyssey is a giant jungle gym on water! Featuring 3 ways to climb to the 8' sun deck and a giant 18' slide into the water and run around the outer rim for a game of cat and mouse. The Odyssey is versatile too, allowing you to connect to a variety of RAVE Sports products to create the ultimate water park system!

Inflated Size	36' x 9.5' (10.97 m x 2.89 m)
Users	15
Product Weight	760 lbs (345 kg)
Water Depth	8' (2.4 m)
Anchor Points	5
Boarding Platforms	5
Item #	02667





# ICEBERG™

## CLIMBING ON THE LAKE? TOO COOL!

A favorite for commercial camps and resorts! The gigantic inflatable 14' Iceberg mountain is a climbing wall and a waterslide all in one, providing enormous fun as kids and adults climb 14 feet to the top, then slide down into the water!

### 7' ICEBERG

Inflated Size	9' x 11' x 7' (274 cm x 335 cm x 213 cm)
Users	4
Product Weight	140 lbs (63.5 kg)
Water Depth	9' (2.74 m)
Anchor Points	4
Handles	43
Item #	1020213

### 14' ICEBERG

Inflated Size	21' x 16' x 14' (640 cm x 488 cm x 427 cm)
Users	8
Product Weight	400 lbs (181 kg)
Water Depth	12' (3.66 m)
Anchor Points	12
Handles	87
Item #	1020169



SPIN WHEEL WITH BONGO 13 PACKAGE

# SPIN WHEEL™

## ROUND AND ROUND WE GO, WHERE IT STOPS NOBODY KNOWS!

The new Spin Wheel is a hoot for all featuring a heavy duty non-slip drop-stitch constructed running track centering on a Bongo 13 water bouncer, perfect for your lifeguard to supervise all the kids. Kids (and adults) run around the low profile track and that's where the spinning action takes place. Make it a game of rapidly changing directions and you'll be testing your balance to see who can stay on! Easy and fun for all age groups, the Spin Wheel provides endless entertainment!

Inflated Size	32' x 26" (975 cm x 66 cm)
Users	15
Product Weight	314 lbs (142 kg)
Water Depth	6' (1.83 m)
Anchor Points	5 point anchor harness with swivel
Item #	02666

# AQUA JUMP® ECLIPSE™

## ECLIPSE 120

## ECLIPSE 150

## ECLIPSE 200

## ECLIPSE 200 STAINLESS



Each Eclipse includes a High Speed Inflator/Deflator, boarding ladder and Anchor connector kit!



Jump Surface 44 sq ft  
 Trampoline Size 12.2' x 26"  
 (372 cm x 66 cm)  
 Users 2 adults or 4 children  
 Product Weight 65 lbs (29 kg)  
 Water Depth 10' (3 m)  
 Item # 00120

65 sq ft  
 14.11' x 36"  
 (455 cm x 91 cm)  
 2 adults or 4 children  
 130 lbs (59 kg)  
 10' (3 m)  
 00150

124 sq ft  
 18.11' x 36"  
 (455 cm x 91 cm)  
 3 adults or 6 children  
 185 lbs (84 kg)  
 10' (3 m)  
 00200

Features the AJ200 with all stainless steel components. Ideal for salt water use!  
 00220

## WATER PARK SYSTEMS

Create an instant waterpark with an Aqua Jump Eclipse Water Park System. We've packaged our most popular attachments with our best-selling water trampoline to create a convenient solution for waterfront attractions.

## AJ150 PARK



Trampoline Size 15' (4.57 m)  
 Included Attachments Aqua Launch  
 Aqua Log  
 Users 4 adults or 6 children  
 Water Depth 10' (3 m)  
 Item # 00152

## AJ200 PARK



20' (6 m)  
 Aqua Launch  
 Aqua Log  
 4 adults or 8 children  
 10' (3 m)  
 00202



**CLASSIC AJ25**

# CLASSIC AQUA JUMP®

## CAN'T BEAT THE CLASSICS

Why Classic? The Classic Aqua Jump water trampoline was specifically designed to serve the commercial camp and resort market. It has a steel bar frame around the perimeter of the tube that secures the springs and jump mat for extra durability and includes two ladders. Our largest Aqua Jump, this trampoline has a 23'2" foot diameter designed for plenty of room for 5 adults and 10 children.

Jump Surface	180 sq ft
Inflated Size	23.2' x 42" (707 cm x 107 cm)
Product Weight	396 lbs (180 kg)
Water Depth	10' (3 m)
# Galvanized Steel Bars	16
Users	5 Adults or 10 Children
Item #	02562



# BONGO™ BOUNCERS



**BONGO 10**



**BONGO 13**



**BONGO 15**



**BONGO 20**

## A SPRINGLESS TRAMPOLINE, GREAT FOR SALT WATER LOCATIONS!

The Bongo is a lightweight and portable water bounce platform that is quick and easy to set-up and the commercial grade reinforced construction provides years of fun! The Bongo is not to be confused with its water trampoline cousin, the Aqua Jump Eclipse. RAVE Sports Bongos do not have springs because the bounce surface connects directly to the inflatable tube. The Bongo is the perfect choice for those who are looking for minimal set-up taking only 20-25 minutes, portability and a great all around recreational swim platform.

Jump Surface	34 sq ft	66 sq ft	81 sq ft	169 sq ft
Inflated Size	10' x 26' (305 cm x 66 cm)	12.6' x 26' (305 cm x 66 cm)	15' x 36' (457 cm x 91cm)	19' x 36' (579 cm x 91cm)
Users	1 Adult or 2 Children	2 Adults or 4 Children	3 Adults or 6 Children	5 Adults or 10 Children
Product Weight	37 lbs (17 kg)	50 lbs (23 kg)	97 lbs (44 kg)	135 lbs (61 kg)
Water Depth	10' (3 m)	10' (3 m)	10' (3 m)	10' (3 m)
Item #	02011	02236	02012	02020

All Bongos come with one boarding ladder.



# WATER WHOOSH™

## BRING FIDO ON TOO!

The Water Whoosh is so versatile. It is a swimming activity, slippery slide, water ski and wakeboard starting platform, hang out spot, and a floating dock. Plus, the RAVE Sports Water Whoosh is the only floating mat available that can be securely attached to our water trampolines, water bouncers, and obstacle courses. The commercial grade drop stitch material holds high inflation pressure, so it is rigid enough to hold 8 adults or 14 children (20' size). When deflated, it rolls up like a sleeping bag for convenient storage.

### WATER WHOOSH 20'

<b>Inflated Size</b>	20' x 5' x 3" (610 cm x 152 cm x 8 cm)
<b>Users</b>	8 Adults or 14 Children
<b>Product Weight</b>	66 lbs (29.9 kg)
<b>Water Depth</b>	4' (1.22 m)
<b>Anchor points</b>	2
<b>Connects to</b>	All Aqua Jumps, All Bongos, Splash Trax, Whoosh 15, Odyssey
<b>Item #</b>	02829

### WATER WHOOSH 15'

<b>Inflated Size</b>	15' x 5' x 3" (457 cm x 152 cm x 8 cm)
<b>Users</b>	6 Adults or 11 Children
<b>Product Weight</b>	48 lbs (21.8 kg)
<b>Water Depth</b>	4' (1.22 m)
<b>Anchor points</b>	2
<b>Connects to</b>	All Aqua Jumps, All Bongos, Splash Trax, Whoosh 20, Odyssey
<b>Item #</b>	02828

### WATER WHOOSH 10'

<b>Inflated Size</b>	10' x 5' x 3" (305 cm x 152 cm x 8 cm)
<b>Users</b>	4 Adults or 8 Children
<b>Product Weight</b>	24 lbs (10.88 kg)
<b>Water Depth</b>	4' (1.22 m)
<b>Anchor points</b>	1
<b>Connects to</b>	Freestanding Only
<b>Item #</b>	02827



## 12' SATURN™

Inflated Size	12' x 11' x 7' (274 cm x 335 cm x 213 cm)
Users	4 Adults or 4 Children
Max Weight Capacity	900 lbs (408 kg)
Product Weight	113 lbs (51.25 kg)
Anchor Points	3 Swivel harness for each anchor
Handles	18
Water Depth	9' (2.14 m)
Item #	1020215



## SKY TOTTER™

Inflated Size	10.4' x 45" x 45" (317 cm x 114 cm x 114 cm)
Users	4 Adults or 4 Children
Max Weight Capacity	900 lbs (408 kg)
Product Weight	50 lbs (23 kg)
Anchor Points	4
Handles	13
Water Depth	9' (2.14 m)
Item #	1000727



## AQUA LAUNCH™

Inflated Size	11.5' x 54" (351 cm x 137 cm)
Users	2
Product Weight	31 lbs (14 kg)
Connects to	Aqua Jump, Eclipse 150,200, AJ25 Bongo 15, 20, Activity Island (Launch pad required)
Water Depth	10' (3 m)
Item #	02005



## AQUA LOG™

### LARGE AQUA LOG

Inflated Size	17.6' x 25' (533 cm x 64 cm)
Users	1
Product Weight	23 lbs (10.43 kg)
Connects to	Aqua Jump, Eclipse 150,200, AJ25 Bongo 15, 20, Activity Island
Water Depth	10' (3 m)
Item #	02003

### SMALL AQUA LOG

Inflated Size	10' x 25" (305 cm x 64 cm)
Users	1
Product Weight	13 lbs (5.89 kg)
Connects to	Aqua Jump, Eclipse 120, Bongo 10, 13
Water Depth	10' (3 m)
Item #	02014





## AQUA BEAM™

### AQUA BEAM 20'

**Inflated Size** 20' x 36" x 22"  
(610 cm x 91 cm x 56 cm)

**Users** 1

**Product Weight** 38 lbs (17 kg)

**Connects to** Activity Island

**Water Depth** 4 (1.22 m)

**Item#** 02414

### AQUA BEAM 13'

**Inflated Size** 13' x 32" x 22"  
(396 cm x 81 cm x 56 cm)

**Users** 1

**Product Weight** 28 lbs (12.7 kg)

**Connects to** Activity Island, Splash Trax

**Water Depth** 4 (1.22 m)

**Item#** 02483



## SLIDE WALK™

**Inflated Size** 20' x 36" x 18"  
(610 cm x 91 cm x 46 cm)

**Users** 2

**Product Weight** 31 lbs (14 kg)

**Connects to** Aqua Jump, Eclipse 150,200,  
AJ25 Bongo 10, 13, 15, 20

**Water Depth** 8' (2.43 m)

**Item#** 02007



# ACTIVITY ISLAND™

NEW!



# ROPE SWING

## ACTIVITY ISLAND

## ACTIVITY ISLAND ST

**Inflated Size** 16' x 14" (488 cm x 36 cm)  
**Users** 12 Adults or 24 Children  
**Product Weight** 142 lbs (64 kg)  
**Connects to** Aqua Beam,  
 Rope Swing (via access ramp),  
 Aqua Launch (via launch pad),  
 Water Whoosh 15, 20,  
 Splash Trax  
**Water Depth** (1.52-3 m) depending on  
 attached activities  
**Boarding** Includes EZ Up II Platform  
**Item #** 02412

**Inflated Size** 13.2' x 14" (404 cm x 36 cm)  
**Users** 10 Adults or 20 Children  
**Product Weight** 151 lbs (68.5 kg)  
**Connects to** Aqua Beam,  
 Rope Swing (via access ramp),  
 Water Whoosh 15, 20,  
 Splash Trax  
**Water Depth** (1.52-3 m) depending on  
 attached activities  
**Boarding** Includes EZ Up II Platform  
**Item #** 02860

**Inflated Size** 14.3' x 15' x 13.5'  
 (434 cm x 457cm x 409 cm)  
**Users** 1  
**Product Weight** 181 lbs (82.1 kg)  
**Connects to** Aqua Jump Eclipse 150,200,  
 AJ25, Bongo 15, 20,  
 Activity Island  
**Water Depth** 10' (3 m)  
**Item #** 02370

**Frame** 10 Gauge commercial  
 grade steel frame with  
 protective foam sleeves  
**Platform** Commercial grade  
 non-slip drop stich  
**Rope** Braided polyethylene  
 with 9" foam disk  
**Anchor Points** 3

Some connecting pieces may be needed to attach  
 Rope Swing or Launch (sold separately)



LARGE AQUA SLIDE

# AQUA SLIDE™

## LARGE AQUA SLIDE

Inflated Size 11.2' x 36" x 42"  
(340 cm x 91cm x 107cm)  
Users 1  
Product Weight 31 lbs (14 kg)  
Connects to Aqua Jump, Eclipse 150,200,  
AJ25 Bongo 15, 20  
Water Depth 10' (3 m)  
Item# 02004

## SMALL AQUA SLIDE

7' x 24" x 30"  
(213 cm x 61cm x 76 cm)  
Users 1  
Product Weight 16 lbs (7.25 kg)  
Connects to Aqua Jump, Eclipse 120,  
Bongo 10, 13  
Water Depth 10' (3 m)  
Item# 02013



# WALK THE PLANK™

Inflated Size 20' x 36" x 18"  
(610 cm x 91 cm x 46 cm)  
Users 2  
Product Weight 31 lbs (14 kg)  
Connects to Aqua Jump, Eclipse 150,200, AJ25  
Bongo 10, 13, 15, 20  
Water Depth 8' (2.43 m)  
Item # 02007

# COURSE COMPONENTS



RAVE Sports' Obstacle course system is completely versatile! Choose from our pre-configured parks, or let us help you create your own obstacle course! Contact us to build a sports park for any waterfront size or budget.

## PYRAMID

Inflated Size 81" x 81" x 62"  
(206 cm x 206 cm x 157 cm)  
Users 2  
Product Weight 70 lbs (32 kg)  
Water Depth 5.5' (1.7 m)  
Anchor Points 1  
Item # 02480



## TUNNEL

Inflated Size 81" x 81" x 56"  
(206 cm x 206 cm x 142 cm)  
Users 3  
Product Weight 81 lbs (37 kg)  
Water Depth 5.5' (1.7 m)  
Anchor Points 1  
Item # 02479



## DOMe

Inflated Size 81" x 81" x 44"  
(206 cm x 206 cm x 112 cm)  
Users 2  
Product Weight 50 lbs (23 kg)  
Water Depth 4.7' (1.4 m)  
Anchor Points 1  
Item # 02478



## WOBBLY BRIDGE

Inflated Size 160" x 81" x 14"  
(411 cm x 206 cm x 36 cm)  
Users 2  
Product Weight 81 lbs (37 kg)  
Water Depth 4' (1.2 m)  
Anchor Points 1  
Item # 02481



## SERPENT

Inflated Size 160" x 95" x 46"  
(399 cm x 241 cm x 117 cm)  
Users 6  
Product Weight 103 lbs (47 kg)  
Water Depth 4.7' (1.4 m)  
Anchor Points 1  
Item # 02513





## PYLON RUN

Inflated Size 160" x 81" x 58"  
(396 cm x 206 cm x 147 cm)  
Users 6  
Product Weight 99 lbs (45 kg)  
Water Depth 5.5' (1.7 m)  
Anchor Points 1  
Item # 02514



## ARCH BRIDGE

160" x 81" x 43.5"  
(399 cm x 206 cm x 110 cm)  
2  
80 lbs (36 kg)  
4.7' (1.4 m)  
1  
02515



## YOKE

109" x 119" x 14"  
(276 cm x 276 cm x 35 cm)  
2  
64 lbs (29 kg)  
4' (1.2 m)  
1  
02871



## 45 DEGREE CURVE

122" x 104" x 14"  
(310 cm x 264 cm x 35 cm)  
2  
50 lbs (22.6kg)  
4' (1.2 m)  
1  
02870



NEW!

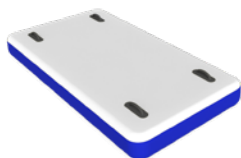
NEW!

# COURSE COMPONENTS



## LOW RIDER PLATFORM

Inflated Size 40" x 81" x 8"  
(102 cm x 206 cm x 20 cm)  
Users 1  
Product Weight 24 lbs (11 kg)  
Water Depth 4' (1.2 m)  
Anchor Points 0  
Item # 02482



## UNIVERSAL PLATFORM

Inflated Size 81" x 81" x 14"  
(206 cm x 206 cm x 36 cm)  
Users 3  
Product Weight 45 lbs (20 kg)  
Water Depth 4' (1.2 m)  
Anchor Points 1  
Item # 02477



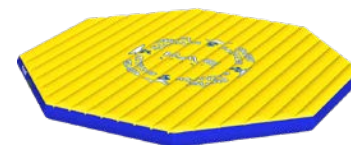
## EZ UP II BOARDING PLATFORM

Inflated Size 34" x 36" x 5"  
(86 cm x 91 cm x 13 cm)  
Users 1  
Product Weight 9.75 lbs (4.42 kg)  
Water Depth 4' (1.2 m)  
Anchor Points 0  
Item # 20656



## ACTIVITY ISLAND

Inflated Size 192" x 192" x 14"  
(488 cm x 488 cm x 36 cm)  
Users 12 Adults or 24 Children  
Product Weight 142 lbs (64 kg)  
Water Depth 4' (1.2 m)  
Anchor Points 2  
Item # 02412



## ACTIVITY ISLAND ST

Inflated Size 159" x 159" x 14"  
(403 cm x 403 cm x 36 cm)  
Users 10 adults or 20 children  
Product Weight 151 lbs (68 kg)  
Water Depth 4' (1.2 m)  
Anchor Points 4  
Item # 02860





### QUICK STEP SOLO

Inflated Size 41" x 44" x 14"  
(1.1 m x 1.1 m x .4 m)  
Users 1  
Product Weight 23.5 lbs (11 kg)  
Water Depth 4' (1.2 m)  
Anchor Points 0  
Item # 20954



### QUICK STEP DUO

81" x 81" x 14"  
(2 m x 2 m x .4 m)  
Users 2  
Product Weight 69 lbs (31 kg)  
Water Depth 4' (1.2 m)  
Anchor Points 1  
Item # 02835



### TUBULAR SWEEP CURVE

160" x 160" x 14"  
(4 m x 4 m x .4 m)  
Users 1  
Product Weight 56 lbs (25.4 kg)  
Water Depth 4' (1.2 m)  
Anchor Points 1  
Item # 02838



### SOLID SWEEP CURVE

160" x 160" x 14"  
(4 m x 4 m x .4 m)  
Users 6  
Product Weight 98 lbs (44.5 kg)  
Water Depth 4' (1.2 m)  
Anchor Points 1  
Item # 02837





# TURBO CHUTE™

## LAKE PACKAGE

Includes 3 - 20' Slide sections  
 6' Starter Mat  
 4 Turbo Sleds  
 1 High Speed Inflator/Deflator  
 Users 1  
 Item # 02472

## 6' STARTER MAT

Inflated Size 6' x 46" x 9"  
 (183 cm x 117 cm x 23 cm)  
 Product Weight 18 lbs (8 kg)  
 Features PVC coated nylon inflatable wall barriers  
 Extra slippery smooth overlapping surface  
 Provided extra padding at the start  
 4 ground stakes included  
 Item # 02444

## 20' SECTION

20' x 46" x 9"  
 (610 cm x 117 cm x 23 cm)  
 24 lbs (11 kg)  
 PVC coated nylon inflatable wall barriers  
 Extra slippery smooth overlapping surface  
 Modular sections to fit your needs  
 4 ground stakes included  
 02442

## TURBO SLED

44" x 23.5" x 7"  
 (112 cm x 60 cm x 18 cm)  
 4 lbs (2 kg)  
 Required for use with Turbo Chute  
 Provides a safe padded slick slide for  
 maximum glide across the water  
 02446







**WATERBOGGAN 5**



**WATERBOGGAN 12**

# WATERBOGGAN™

## WATERBOGGAN 3

**Inflated Size** 169" x 48"  
(429 cm x 122 cm)

**Riders** 3

**Tow Point** Reinforced 5/8" braided polypropylene

**Handles** 3 - Clear PVC tubing

**Item #** 03300

## WATERBOGGAN 5

**Inflated Size** 217" x 48"  
(551 cm x 122 cm)

**Riders** 5

**Tow Point** Reinforced 5/8" braided polypropylene

**Handles** 5 - Clear PVC tubing

**Item #** 03500

## WATERBOGGAN 6

**Inflated Size** 241" x 48"  
(612 cm x 122 cm)

**Riders** 6

**Tow Point** Reinforced 5/8" braided polypropylene

**Handles** 6 - Clear PVC tubing

**Item #** 03600

## WATERBOGGAN 12

**Inflated Size** 235" x 91" x 30"  
(597 cm x 231 cm x 76 cm)

**Riders** 12

**Tow Point** 4 Point sliding bridle  
Tow system

**Handles** 12 - Clear PVC tubing

**Item #** 02657



POLYURETHANE  
FLEX FIN

DESIGNED FOR COMMERCIAL CAMPS,  
RESORTS & RENTAL SHOPS

# IMPACT PCX™

- Size - 10'5" x 34" x 4.5" (317.5 cm x 86.3 cm x 11.4 cm)
- Features
  - High density ABS with PCX Polycarbonate molded shell for superb durability & impact resistance.
  - Fiberglass reinforced side rail & carbon fiber reinforced deck.
  - Large EVA deck pad for comfort & grip.
  - Unbreakable 10" polyurethane FLEX Fin.
- Product Weight - 31 lbs (14.06 kg)
- Max Rider Weight - 250 lbs
- Item # - Matte: 02726, Gloss: 02738

## GLIDE POLYGLASS



- Adjustability: 69" - 84" (175 cm-213 cm)
- Carbon fiber reinforced fiberglass shaft
- Polycarbonate blade
- Paddle type: Advanced, Intermediate
- Item #: 02519

## GLIDE JUNIOR POLYGLASS



- Adjustability: 69" - 84" (175 cm-213 cm)
- Carbon fiber reinforced fiberglass shaft
- Polycarbonate blade
- Paddle type: Advanced, Intermediate
- Item #: 02519



# AQUA POWER™

## JOIN THE FLOATING FITNESS MAT REVOLUTION!

Far from the average cardio or yoga class! Designed for indoor and outdoor pools, the Aqua Power floating fitness mat provides parks and recreation, university, and municipal programs a new, innovative training option for their members and community.

**Health benefits:** Total body workout tailored to all ability levels by incorporating yoga, HIT, cardio, and core strength training; also improves balance, coordination, stability and relieves stress

**Business benefits:** Retain members, attract new members, and maximize pool utilization in all seasons

NOTE: RAVE Sports has partnered with instructors to provide Aqua Power training programs for your instructors (up to .8 CECs through ACE).

- Size** • 85" x 37" x 6" (215 cm x 94 cm x 15.2 cm)  
Designed to fit within a standard swim lane
- Features** • Resistance band holder
- Commercial-grade drop-stitch material inflates to high pressure for rigidity
- Reinforced neoprene carry handles for comfort
- High-quality carabineers snap onto swim lanes; plus 4 anchor line eyelets for anchoring options
- Large slip-resistant pad with graphics designed to assist instructor's directions (i.e., "Stand on center diamond", etc.)

- Product Weight** • 15 lbs (6.8 kg)
- Max Rider Weight** • 250 lbs
- Item #** • 02878



# ACCESSORIES

## ADULT NEOPRENE



**Neoprene Size Guide:**  
**Small:** 90+ lbs. (41 kg)  
 33-37" chest (84-94 cm)  
**Medium:** 90+ lbs. (41 kg)  
 37-41" chest (94-104 cm)  
**Large:** 90+ lbs. (41 kg)  
 41-45" chest (104-114 cm)

- Available Sizes** · SM, MED, LG
- Features** · Comfortable neoprene fit with drainage mesh  
 · Zip closure with 2 belts  
 · Type III, USCG Approved
- Item #** · SM: 02422, MED: 02423, LG: 02424

## YOUTH NEOPRENE



- One Size: 50-90 lbs (23-41 kg)  
 25-29" (63.5-74 cm) chest
- Comfortable neoprene fit with drainage mesh
- Zip closure with 2 belts
- Type 111, USCG Approved
- 02431

## ADULT UNIVERSAL



- One Size: Fits adults 90+ lbs (41kg)  
 30-52" (76-84 cm) chest
- Durable nylon with soft foam core
- 3 sure-lock buckles
- Type 111, USCG Approved
- 02437

## YOUTH UNIVERSAL



- One Size: Fits adults 90+ lbs (41 kg)  
 30-52" (76-84 cm) chest
- Durable nylon with soft foam core
- 3 sure-lock buckles
- Type 111, USCG Approved
- 02437

## HIGH SPEED INFLATOR/DEFLATOR



- 3.0 PSI / 48 CFM
- 4 standard inflation adaptors
- 1 Halkey Roberts Valve adaptor
- 36" Long hose
- Built in overheat protection
- 120vac / 60 hz / 917w / 7.0 amps / 1.2 HP
- Item #: 01083
- Item #: 01090 (European)

## COMPACT INFLATOR/DEFLATOR



- 2.2 PSI / 40 CFM
- 5 Standard inflation adaptors
- 1 Halkey Roberts Valve adaptor
- Recommended for high pressure inflatables, tubes, and more
- 120vac / 60 hz, 730w
- Item #: 02704

## DIGITAL PSI GAUGE



- 0-15 PSI with digital display to 1/100th PSI
- Also readable in millibars (68.9-344 millibars)
- Includes adapter to lock onto all Halkey Roberts style inflation valves
- Durable & water resistant
- Item #: 02809

## ANCHOR CONNECTOR KIT



- 3 part system permanently marks anchor location
- Provides holding power to all anchored products
- 6" (15 cm) shock cord absorbs movement & stress
- 15' (4.57 m) Nylon rope
- Marine grade components, galvanized steel chain
- Item #: 01024

## SAFETY PERIMETER SWIM BUOYS



- 15' x 9" (457 cm x 23 cm) inflated
- Set of 3
- Create a safe perimeter around products or beach
- Item #: 02235

# PRODUCT SUMMARY



Saturn™  
12' x 11' x 7'



Sky Totter™  
10.4' x 3'9" x 3'9"



Ascent Slide™  
17' x 7' x 7.7'



Nautilus™  
28' x 25' x 15'



14' Iceberg™  
21' x 16' x 14'



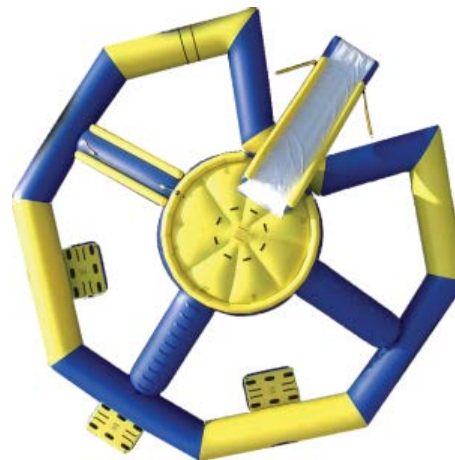
7' Iceberg™  
9' x 11' x 7'



Power Tower™  
15.5' x 11.75' x 8.5'



Spinwheel with Bongo™  
32' x 36"



Odyssey™  
36' x 9.5'



Shoreline Slide™  
47' x 9.5' x 20'



**Pyramid™**  
81" x 81" x 62"



**Tunnel™**  
81" x 81" x 56"



**Dome™**  
81" x 81" x 44"



**Pylon Run™**  
160" x 81" x 58"



**Serpent™**  
160" x 95" x 46"



**Ninja Quad Steps™**  
160" x 81" x 43"



**Full Tilt™**  
160" x 74" x 43"



**Aqua Totter™**  
160" x 126" x 45"



**Arch Bridge™**  
160" x 81" x 43.5"



**Wobbly Bridge™**  
160" x 81" x 14"



**Arch Bridge 1.5™**  
122" x 81" x 47"



**Rope Swing™**  
14'3" x 15' x 13'5"



45 Degree Curve™  
122" x 104" x 14"



Universal Platform™  
81" x 81" x 14"



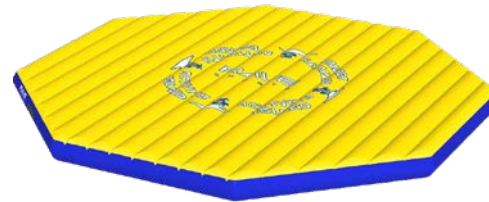
Yoke™  
109" x 119" x 14"



Solid Sweep Curve™  
160" x 160" x 14"



Tubular Sweep Curve™  
160" x 160" x 14"



Activity Island™  
192" x 192" x 14"



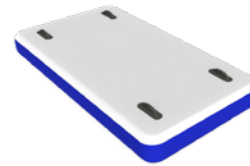
Activity Island™ ST  
159" x 159" x 14"



Quick Step Solo™  
41" x 44" x 14"



Quick Step Double™  
81" x 81" x 14"



Low Rider Platform™  
40" x 81" x 8"



Easy Up II Boarding Platform™  
34" x 36" x 5"



Water Whoosh™ 20' White  
20' x 5' x 3"



Water Whoosh™ 15' White  
15' x 5' x 3"



Water Whoosh™ 10' White  
10' x 5' x 3"



**Aqua Slide™**  
11'2" x 3' x 3'6"



**Small Aqua Slide™**  
7' x 24" x 1'6"



**Sidewalk™**  
20' x 3' x 1'6"



**Aqua Log™**  
17'6" x 25"



**Smaller Aqua Log™**  
10' x 25"



**20' Aqua Beam™**  
20' x 3' x 1'10"



**13' Aqua Beam™**  
13' x 3' x 1'10"



**Walk the Plank™**  
12' x 64" x 76"



**Aqua Launch™**  
11'5" x 54"



**Waterboggan 3™**  
169" x 48"



**Waterboggan 5™**  
217" X 48"



**Waterboggan 6™**  
241"x48"



**Waterboggan 12™**  
235" x 91" x 30"





**Bongo 10' Bouncer™**  
10' x 26"



**Bongo 13' Bouncer™**  
12.6' x 26"



**Bongo 15' Bouncer™**  
15' x 36"



**Bongo 20' Bouncer™**  
20' x 36"



**Eclipse 120 Trampoline™**  
12.2' x 26"



**Eclipse 150 Trampoline™**  
14.9' x 36"



**Eclipse 200 Trampoline™**  
18.9' x 36"



**Eclipse 200 Trampoline™  
Stainless**  
18.9' x 36"



**Classic Aqua Jump™**  
23.2' x 42"



**Turbo Chute™ Starter Mat**  
6' x 46" x 9"



**Turbo Chute™ 20' Section**  
20' x 46" x 9"



**Turbo Sled™**  
44" x 23.5" x 7"



Adult Neoprene  
Small, Medium, Large



Youth Neoprene



Universal Nylon PFD  
Adult Adults 90+ lbs



Universal Nylon PFD Youth  
50-90 lbs



High Speed Inflator/Deflator  
3.0 PSI



Compact Inflator/Deflator  
2.2 PSI



Digital 0-15 PSI Gauge



Anchor Connector Kit  
6' Anchor Cord



Aqua Power™  
85" x 37" x 6"



Impact PCX™  
10'5" x 34" x 4.5"



Glide Polyglass™  
69"- 84"



Glide Jr. Polyglass™  
55"- 70"



Safety Buoys  
Set of 3





Learn more about water sports equipment we have.