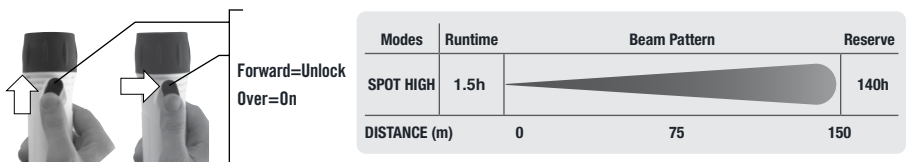




**TORRENT®
LED FLASHLIGHT**

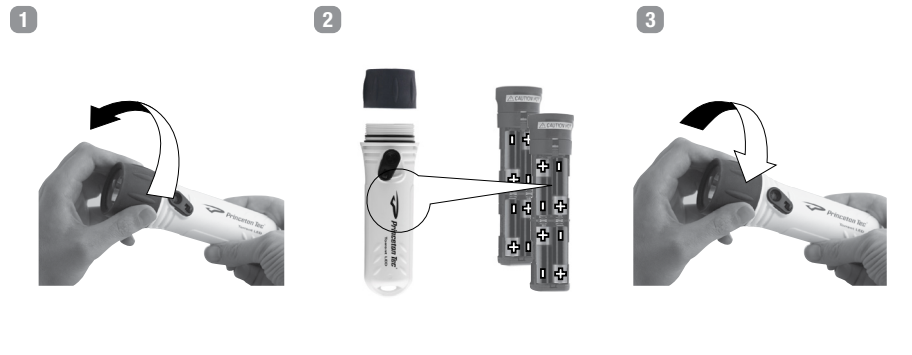
Operating and Maintenance
Instructions

Figure 1 – Switch Operation



Burntime is the duration of time that the light is producing 10% or more of its rated initial output value.
Reserve Time is the duration of time that the light is producing more than 0.25lux at a distance of 2 meters.

Figure 2 – Battery Replacement



ENGLISH

Battery Installation

– See *Battery Installation Diagram*
8 AA
Alkaline (LR03) or Lithium
Rechargeable NiCad or NiMH

LEDs require proper battery polarity to function. If the unit fails to operate, rotate the reflector assembly 180°. For best performance, use alkaline AA-cells, Carbon zinc and Nicad may be used but will result in reduced brightness and burn time.

Princeton Tec cares about the environment and recommends recycling batteries. For more information about battery recycling, please go to www.batteryrecycling.com.

WARNING ⚠

- Never mix fresh and used batteries.
- Never mix different battery brands or chemistry types.
- Always remove drained batteries immediately.
- Remove batteries during long periods of storage.

NOTE : Lithium batteries offer extended constant brightness time, extreme cold weather performance, and lighter weight. Rechargeable NiCad or NiMH batteries may result in reduced brightness due to lower nominal voltage. The Torrent LED battery compartment has a waterproof seal. It is important to keep these o-ring seals free from dirt, away from harsh chemicals, and lightly lubricated with silicone grease. Never use aerosol spray lubricants as certain forms of aerosol sprays can cause damage to the plastic parts and void the warranty. Inspect the seals every time the batteries are changed.

NOTE: Some battery types can emit hydrogen gas, which can create an explosion potential in sealed devices if it is not vented or removed. The Torrent LED is equipped with a platinum catalyst to remove this gas. Upon severe impact, the catalyst could fracture. If you notice a rattling sound in the light or gray particles in the battery compartment, do not use the light. See the warranty and return policy for more information.

Switch Operation

– See *Battery Installation Diagram*
Unlock the safety lock by sliding the lock button forward. Rotate the switch to the off position and pull the switch lock back to lock the switch and prevent accidental activation while in transit.

O-Ring and Lens Cap

Occasionally clean and lightly lubricate the O-ring and Lens Cap threads. Use only silicone grease, never use aerosol spray lubricants. Certain types of aerosol sprays can cause damage the plastic and void the warranty.

General Maintenance

As with any outdoor equipment, the light should be kept clean with mild soap and water. Avoid getting dirt on the o-ring and in the threads of the lens cap. If this should occur, take the light apart, remove the o-ring, light module and batteries, then clean the light body, lens and o ring re-lubricate the o-ring and reassemble the light.

Troubleshooting

- If the Torrent fails to light:
- Check the batteries for proper installation.
 - Replace batteries if proper installation is confirmed.
 - Check the light for water contamination
The light will resume normal operation once the water is shaken or blown out and the light is left open until completely dry. If the light has been contaminated with salt water, flush the unit with fresh water and dry as described above.