



PICNIC TIME®

We know Picnic.



LEGACY

a Picnic Time brand



2017

# PICNIC TIME

FAMILY OF BRANDS



TOSCANA

a Picnic Time brand



ONIVA

a Picnic Time brand



# PICNIC TIME®

# FAMILY OF BRANDS

As we have grown over the past 35 years, our line has evolved from a handful of picnic baskets to over 450 unique and innovative gift items covering a broad range of categories. After extensive planning and research, in an effort to better align our products with their respective categories, we are pleased to introduce the Picnic Time Family of Brands.

The **PICNIC TIME** brand will stay true to its roots – offering the widest selection of picnic baskets, wine baskets, and picnic totes suitable for all occasions.

The **ONIVA** brand encompasses active living and outdoor recreation. This line offers a wide array of outdoor gear such as chairs and stadium seats, food totes, coolers and travel cases, gardening totes and kits, beach essentials, and so much more.

All of the accessories you need to enjoy beer, wine, and spirits can be found in our **LEGACY** brand. From beer flights to growlers, whiskey sets to bar accessory kits, wine totes and beverage carriers, this line has got it all.

**TOSCANA** is our tabletop and serveware brand which has been designed with sustainability, functionality, and style in mind. We have sourced natural beautiful woods for our innovative line of serving boards, serving planks, serving stations, and cheese boards.

Each of the four new brands has their own unique identity, while still maintaining the core attributes of quality and innovation that you have come to associate with Picnic Time. We hope you enjoy our new look and feel as much as we do.



PICNIC TIME®

We know Picnic.



LEGACY®

a Picnic Time brand



TOSCANA™

a Picnic Time brand



ONIVA™

a Picnic Time brand



A handwritten signature in black ink, appearing to read 'Danny Corbucci'.

Danny Corbucci, Partner

A handwritten signature in black ink, appearing to read 'Mario Tagliati'.

Mario Tagliati, Co-Founder

A handwritten signature in black ink, appearing to read 'Gustavo Cosaro'.

Gustavo Cosaro, Co-Founder

A handwritten signature in black ink, appearing to read 'Paul Cosaro'.

Paul Cosaro, Partner

And the entire Picnic Time Family

As you've probably noticed from the new look of the catalog, Picnic Time has launched an exciting new branding approach for 2017. We've done our very best to make sure that the details of these changes are clearly communicated throughout this catalog. All of us here at Picnic Time are looking forward to the possibilities that this refreshed branding will provide.

What will not change is our commitment to serving you, our customer. Service is a core belief that remains unchanged since our inception in 1982. Your complete satisfaction is our ultimate goal, and every member of our Picnic Time family knows that we need to earn the right to your business each and every day. From this mission, we are happy to announce our Built To Last Lifetime Guarantee.

We are dedicated to making and keeping our customers happy – for life. See page 142 for more details.

For our existing customers, we are forever grateful for your loyalty and hope you are as eager about the possibilities of our new branding approach as we are.

For those of you experiencing the Picnic Time Family of Brands for the first time, we look forward to developing a wonderful partnership that will last for many years to come.

So, with a grateful and heartfelt nod to the past, we look forward to a bright future.

**Thank you for choosing Picnic Time Family of Brands.**



# WHAT'S NEW

Look for this icon for all items new to 2017



BEER CADDY  
*Page 71*



DOUBLE-GROWLER TOTE  
*Page 71*



GROWLER TOTE WITH  
STAINLESS STEEL GROWLER  
*Page 73*



STAINLESS STEEL GROWLER  
*Page 72*



ADVENTURE WINE TOTE  
*Page 85*



BAR-BACKPACK  
*Page 75*



WHISKEY BOX  
*Page 74*

NEW COLLECTION:

# WATERMELON

*Page 118*





NEW COLLECTION:

# Harmony

Page 121



ACACIA BRIE  
Page 96



ACACIA CIRCO  
Page 96



ARTISAN SERVING PLANK  
Page 92



OTTOMAN COOLER  
Page 35



POTLUCK  
Page 28



CANTERBURY  
Page 14



SOMERSET  
Page 13



# TABLE OF CONTENTS



Pages **10 - 25**



Pages **26 - 67**



Pages **68 - 87**



Pages **88 - 115**

## COLLECTIONS

Pages **116 - 141**

**NEW**

**NEW** items and items with new editions are highlighted in **orange**.

PRODUCT NAME	SKU#	PAGE	PRODUCT NAME	SKU#	PAGE
18-Piece BBQ Case	748-00	64	Campsite Chair	806-00	50
19th Hole	901-00	111	Can Cooler	690-00	41
3-Piece BBQ Tote	749-03	65	Canasta	118-00	16
Acacia Brie	879-03	96	Canasta Grande	119-00	16
Acacia Circo	855-04	96	Canterbury	212-86	14
Acacia Pizza Peel	891-00	92	Cantinerio	828-00	78
Ace	703-00	60	Carnaval	819-00	99
Activo	614-00	36	Carovana	967-00	113
Adventure Wagon	739-00	44	Carrara	962-00	112
Adventure Wagon - All-Terrain	741-00	45	Cart Cooler	545-00	38
Adventure Wagon - All-Terrain Elite	741-85	45	Catalina	140-10	19
Adventure Wagon Elite	739-85	44	Cellar	660-00	82
Adventure Wine Tote	505-05	85	Cellar with Trolley	660-85	82
Aero	600-00	33	Champion	208-40	17
Aluminum Picnic Table	801-00	54	Charleston	300-92	12
Artisan Serving Plank	892-00	92	Cheese Knife	859-00	106
Asiago	869-00	99	Circo	854-00	97
Avalanche	538-38	24	Colby	845-00	98
Bar-Backpack	670-44	75	Compagno	965-00	112
Barossa	522-49	86	Concavo	823-00	100
Barrel	223-25	18	Concerto	919-00	102
BBQ Apron Tote Pro	635-88	64	Corsica	120-04	21
BBQ Kit Cooler	757-06	64	Country Basket	138-00	17
Beach Tote	657-00	36	Cove	112-00	42
Beachcomber	802-00	43	Craft Beer Flight	601-05	70
Bean Bag Throw - Custom	769-00	61	Delio-Acacia	833-00	101
Bean Bag Throw - Football	769-00	61	Double-Growler Tote	613-00	71
Bean Bag Toss Travel Set	758-00	61	Double-Growler Tote w/ Growlers	613-02	71
Beer Caddy	762-00	71	Duet	623-04	86
Big Bear Camp Chair	808-00	48	Dutch Oven Station	988-04	91
Blanket Tote	820-00	56	Elan	868-00	79
Blanket Tote XL	920-00	57	Enigma	954-02	94
Bodega	597-00	82	Estate	514-49	86
Bongo Cooler/Seat	596-00	38	Fajita Station	986-06	90
Botella	818-00	106	Festiva	852-00	98
Brie	878-00	97	Festival Blanket	824-99	59
Bristol	204-25	15	Fiero	681-00	64
Bruschetta	960-00	113	Formaggio	856-00	98
Buccaneer	750-00	63	Free Throw	840-00	110
Cabernet	889-00	81	Fusion Chair	807-00	47
Cabo Beach Tote	638-00	36	Gardener	542-93	32
Caddy	914-00	111	Growler, Glass	104-00	72
Caliente	771-00	63	Growler, Stainless Steel	102-00	72



PRODUCT NAME	SKU#	PAGE	PRODUCT NAME	SKU#	PAGE	PRODUCT NAME	SKU#	PAGE
Gondola	225-44	21	Montero	604-00	33	Soiree	853-00	100
Grenache	888-00	80	Napa	215-19	20	Somerset	213-87	13
Growler Tote	610-00	73	Newbury	207-50	15	Sonoma	616-60	83
Growler Tote w/ Glass Growler	610-85	73	Oliera	963-00	115	Spigot	000-85	40
Growler Tote w/ SS Growler	610-82, -83, -84	73	Oniva Seat	626-00	53	Sports Chair	809-00	46
Guitar	898-00	105	Ottoman Cooler	594-00	35	Stadium Seat	627-00	53
Hamilton	669-48	77	Ottoman Cooler w/ Trolley	594-85	35	Swiss	850-00	105
Heart	918-00	105	Outlander Camp Chair	800-00	49	Symphony	949-13	94
Heart Basket	329-35	20	Ovale-Acacia	893-00	107	Syrah	887-00	81
Herb Chop Block	897-00	106	Parlor	870-00	93	Tahoe	598-00	37
Hermosa	612-00	36	Peninsula	953-05	94	Toluca	401-42	24
Highlander	302-55	13	Piano	900-00	105	Topanga	619-00	37
HomeRun!	894-00	108	Piccadilly	202-19	19	Touchdown Pro	896-00	109
Icon	910-00	103	Picnic Table	811-00	55	Touchdown!	896-00	109
Island	947-02	94	Picnic Table - Sport	811-00	55	Tranquility Chair	792-00	50
Kabrio	325-72	23	Pilsner	602-06	70	Travel Table	799-00	54
Kickoff	908-00	108	Pioneer	346-76	22	Tridente	961-00	113
Laguna	503-42	129	Pismo	642-00	30	Trolley	738-00	82
Large Garden Tote	543-93	32	Portagrillo	776-00	63	Trunk Boss	715-00	67
Leaf	830-00	100	Potluck	650-00	28	Turismo	641-00	34
Madison	668-44	76	Prairie Basket	349-00	17	Umbrella	812-00	42
Maestro	890-00	79	Prairie Basket w/ liner	349-01	17	Umbrella 5.5	822-00	42
Malibu	508-23	25	Pranzo	512-80	29	Urban Basket	546-00	33
Mambo	646-95	87	Prodigio	964-00	115	Ventura Seat	618-00	52
Manhattan	667-63	78	Professional Tool Kit	709-00	67	Verdugo	413-44	24
Manta	113-00	42	PT-Colorado	531-20	24	Verona	224-82	22
Margherita	968-00	114	PT-XL Camp Chair	793-00	48	Vino	122-15	21
Mariner	904-00	104	PTX	633-00	34	Vista Blanket	821-00	58
Mariposa	849-00	100	PTZ Camp Chair	804-00	49	Vista Blanket XL	921-00	59
Market Basket	648-00	31	Quarterback	907-00	109	Volare	622-04	80
Mega Can Cooler	686-00	41	Raccolta	969-00	113	Vulcan	770-00	62
Mercado basket	599-00	33	Reclining Camp Chair	803-00	51	Vulcan with Trolley	770-85	62
Meridian	857-00	107	Regalio	813-00	98	Waiter-Style Corkscrew	862-00	80
Meritage	629-60	80	Reserve	817-00	103	Whiskey Box	605-10	74
Mesamio	842-00	79	Roadside Emergency Kit	699-00	66	Windsor	214-90	14
Mesavino	841-00	79	Romance	322-31	18	Wine Country Tote	617-00	83
Mescolare	966-00	114	Sailboat	905-00	104	Wine Sack	631-95	86
Metro Basket	645-00	31	Samba	647-95	87	Wood Cutting Board	851-00	106
Metro BBQ Tote	747-03	65	Sand Trap	906-00	110	X-Grill	775-00	63
Mini Bean Bag Throw	768-00	60	Sidekick	779-00	39	Yellowstone	216-76	21
Mini Can Cooler	691-00	40	Silhouette	846-00	106	Zuma	634-00	30
Monaco Beach Chair	790-00	51	Six Pack	608-00	34			
Moreno	624-04	84	Six Porter	595-00	74			



# PICNIC TIME<sup>®</sup>

---

Picnic Time was started with the dream of creating experiences that encourage romance, nostalgia, and lasting memories with friends & family. We maintain this tradition with our unique and innovative picnic baskets. It is a passion that has been growing for 35 years.

We know picnic.

PICNIC BASKETS

WINE BASKETS

PICNIC TOTES







The Festival Blanket  
MADE IN THE USA





**Charleston | 300-92-187**

Top of the line basket with service for four. Includes stemless glasses, porcelain plates, 18/10 stainless steel flatware, insulated wine tote and food cooler, full-sized wooden serving tray, a paddle cheese board and cheese knife, and Festival Blanket, 824-99-805. Made of willow with real leather trim. 25.5" x 17" x 11.8"

**Festival Blanket | 824-99-805**

Patchwork design blanket with solid denim underside. Machine washable and dryable. Each blanket is handmade; fabric patterns and pattern placement may vary. Color scheme will remain the same. 57" x 67"







**Highlander | 302-55-401**

Bombay-style basket with deluxe service for four. Includes blanket. Made of willow with quilted red tartan lining. 22.5"x 17"x 12"



NEW  
406

**Somerset | 213-87**

English-style double-lid basket with deluxe service for two. Features porcelain plates, insulated cooler and wine duffel. Made of willow with genuine leather straps. 19" x 13" x 12"





**Windsor | 214-90-915**

English-style basket with deluxe service for four. Features porcelain plates. Made of willow with genuine leather straps. 23.5" x 14.5" x 11"



613



915

**Canterbury | 212-86**

English-style basket with deluxe service for two. Features porcelain plates. Made of willow with genuine leather straps. 16" x 12" x 16"







**Newbury | 207-50-404**

English-style basket with deluxe service for four.  
Features porcelain plates. Made of willow with cotton lining. 20.5" x 13.3" x 8"



**Bristol | 204-25-404**

English-style basket with deluxe service for two.  
Features porcelain plates. Made of willow with cotton lining.  
15.8" x 12" x 7.5"







300



190



190



300



**Canasta Grande | 119-00**

Flat lid empty picnic basket with willow body, poly-cotton liner and reversible, removable tabletop lid. Full color lid decoration available. 19" x 14" x 11"

**Canasta | 118-00**

Flat lid empty picnic basket with willow body, poly-cotton liner and reversible, removable tabletop lid. Full color lid decoration available. 16.5" x 11.5" x 10"







**Prairie Basket with Canvas Liner | 349-01-187**

Traditional woven wood picnic basket, made in the USA from Appalachian white ash, with solid brass nails and brass-coated hardware and a removable canvas liner. 17.9" x 12" x 9.8"

**Prairie Basket | 349-00-505**

Traditional woven wood picnic basket, made in the USA from Appalachian white ash, with solid brass nails and brass-coated hardware. 17.9" x 12" x 9.8"



**Country Basket | 138-00-300**

Willow picnic basket with wooden split-lid design. Includes removable polycotton liner. 17.5" x 13" x 8"/14"



100



138

179



**Champion | 208-40**

Picnic basket with deluxe service for two, with wine glasses, stainless steel flatware and corkscrew. 16" x 12" x 8"



321



319

NEW

**Barrel | 223-25**

Barrel-shaped basket with deluxe service for two.  
Made of willow and durable polyester canvas lining, 18.5" x 12" x 17"



NEW

319



320

**Romance | 322-31**

Basket with deluxe service for two. Made of willow with polyester canvas lining,  
15.8" x 12" x 12"







**Piccadilly | 202-19**

Double-lid basket with service for two. Includes roll-up flatware pouch.  
Made of willow with polyester lining. 16.5" x 11" x 9.3"



**NEW**

319



321

**Catalina | 140-10**

English-style basket with picnic service for two. Features ceramic plates and mugs.  
Made of willow with polyester lining. 14" x 11" x 7.5"





550



320

NEW



319

**Napa | 215-19**

Basket with wine and cheese service for two. Made of willow with durable polyester canvas lining. 12.5" x 8.5" x 10.5"



**Heart Basket | 329-35-190**

Picnic basket with deluxe service for two. Made of willow with antique white cotton lining and linens. 17.5" x 15" x 10"





**Yellowstone | 216-76-777**

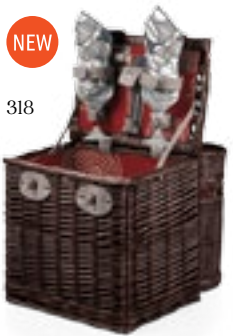
Basket with deluxe picnic service for two. Features canvas shoulder strap and sturdy carrying handle. Made of willow with polyester canvas lining. 15" x 10" x 13"

**Corsica | 120-04-187**

Insulated two-bottle wine basket with cheese service and corkscrew. Made of willow and polyester canvas with adjustable shoulder strap. 9.8" x 6.5" x 13.8"

NEW

318



320



**Vino | 122-15**

Basket with wine and cheese service for two. Features two exterior wine compartments. Made of willow with durable polyester canvas lining. 14" x 11" x 11.5"



NEW

**Gondola | 225-44-318**

Contemporary picnic basket with service for four and two exterior storage compartments for wine and food. Made of willow with durable polyester canvas lining. 22.5" x 16" x 11"



320



NEW

318



515

**Verona | 224-82**

Barrel-shaped basket with deluxe wine and cheese service for two.  
Made of willow and polyester canvas. 18" x 10.5" x 10.5"



**Pioneer | 346-76-916**

Double-lid basket with deluxe service for two. Includes blanket, as shown.  
Basket made of canvas with water-resistant bottom. 20" x 12.5" x 11.5"







779



321



322



NEW

318



777



**Kabrio | 325-72**

Basket with built-in wooden table top. Has wine and cheese service for two.  
Made of willow with polyester canvas lining and lid. 14.5" x 10" x 11"



**Avalanche | 538-38-915**

Insulated hard-shell cooler on wheels with deluxe service for four and adjustable shoulder strap. Features 45-can capacity food storage compartment. Made of polyester dobby. 15" x 13" x 19"



138

105



**PT-Colorado | 531-20**

Insulated picnic backpack cooler with a 20-can capacity and deluxe service for two. Made of polyester. 15.5" x 10.5" x 7"



116



179



138



**Verdugo | 413-44-179**

Insulated cooler with deluxe picnic service for four and water-resistant food section. 30-can capacity. Made of polyester canvas. 17.5" x 11" x 13"







**Malibu | 508-23**

Insulated cooler with deluxe picnic service for two. Has a removable water-resistant liner and two-bottle wine section. 12-can capacity. Made of polyester canvas. 14.5" x 10.5" x 9"



ONIVA™

a Picnic Time brand

---

The Oniva brand promotes recreation, an active lifestyle, and outdoor adventures.  
It is something that has a sense of motion and movement.

So get up... and let's go!

COOLERS/TOTES

GARDEN

OUTDOOR FURNITURE

BLANKETS

GAMES

BBQ











325



**POTLUCK | 650-00**

Portable insulated casserole tote with two compartments. Has loops on handles to hold serving spoons (not included) and removable identification tag. Made of polyester (or polyester microfiber, 175 only). 7" x 16.5" x 10.8"



175

322



406

NEW



319

NEW







324

175



100



138



322



**PRANZO | 512-80**

Insulated picnic cooler with service for one. Separate hot and cold compartments. 8-can capacity. Includes napkin, flatware, and salt and pepper shakers. Made of polyester. 12" x 8" x 11"





175



100



**ZUMA | 634-00**

Insulated backpack cooler with water-resistant liner. Features separate sections for food and gear, two exterior beverage pockets and a phone pocket in shoulder strap. Cooler section has a 13-can capacity. Made of polyester canvas. 11" x 7" x 19"

139



**PISMO | 642-00-324**

Insulated backpack cooler with water-resistant liner. Features separate sections for food and gear, two exterior beverage pockets and a phone pocket in shoulder strap. Cooler section has a 13-can capacity. Made of polyester canvas. 11" x 7" x 19"





**METRO BASKET | 645-00**

Lightweight insulated cooler basket. Features water-resistant interior and expandable drawstring top. 26-can capacity. Polyester canvas with aluminum frame. 19" x 11" x 10" Base: 15"



**MARKET BASKET | 648-00**

Lightweight, insulated cooler basket with fully-removable zippered top. Features water-resistant interior with 29-can capacity. Made of polyester with aluminum frame. 19" x 11" x 10" Base 15"





138



**LARGE GARDEN TOTE | 543-93**

Lightweight canvas gardening tote with three garden tools. Includes polyester tote and tools with wooden handles. 9.8" x 4.3" x 10"

190



**GARDENER | 542-93-121**

Folding seat with five gardening tools and detachable storage tote. Steel tools with wooden handles. Seat made of polyester on steel frame. 12" x 13.5" x 15.5"





**URBAN BASKET | 546-00**

Compact, non-insulated folding market basket with stationary aluminum handle and center divider that flattens and doubles as a basket bottom. Made of durable polyester.  
 Folded: 10" x 2.3" x 15.3" (including handle) Opened: 15.8" x 9.5" x 8.5"



**MERCADO BASKET | 599-00-179**

Insulated split-lid cooler basket with water-resistant interior. 18-can capacity. Exterior front pocket. Made of polyester. 17" x 9.8" x 10"



**AERO | 600-00-179**

Insulated cooler with front pocket and adjustable shoulder strap. 27-can capacity. 11" x 8.3" x 10"



**MONTERO | 604-00**

Insulated cooler tote with 20-can capacity, front zippered pocket and versatile carrying strap. Made of polyester. 11.8" x 6.3" x 12.6"

138



175



100



Attachment strap on back for golf carts



**PTX | 633-00**

Insulated backpack cooler with 20-can capacity and water-resistant interior liner. Features golf cart harness, five separate pockets, and a stretch cargo cord for added storage. Made of polyester. 11" x 7" x 12.5"

777



120



175



179



138



100



139



**TURISMO | 641-00**

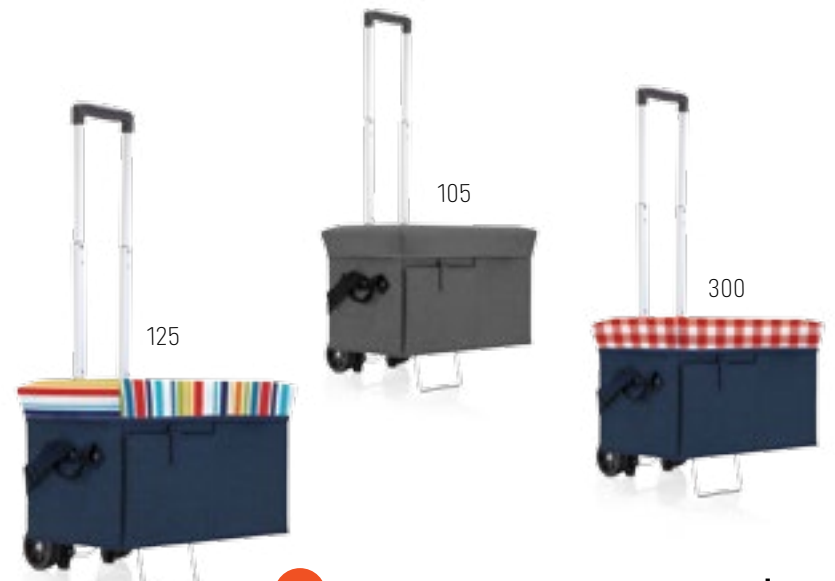
Insulated day-trip backpack cooler with multiple pockets. 20-can capacity. Features insulated water duffel and large utility clip. Made of polyester canvas. 16" x 5" x 19"



**SIX PACK | 608-00**

Insulated six pack holder. Fits most bottles and cans of water, beer or soda. Features front pocket and interior slot for an ice pack. Made of neoprene with padded handles. 7" x 4.5" x 9"





**NEW** OTTOMAN COOLER WITH TROLLEY | 594-85

Integrated luggage strap on back side of cooler allows for attachment to trolley included. Made of polyester and chrome-plated iron, 20" x 12" x 12"; See pg. 113 for trolley details.



**NEW** OTTOMAN COOLER | 594-00

Insulated, collapsible cooler with 24-can capacity. Has a padded lid, front panel door and padded shoulder strap. Holds up to 350 lbs. when used as a seat or ottoman. Made of polyester, 20" x 12" x 12"



322



325



138



100



175



**ACTIVO | 614-00**

Insulated cooler tote with multiple pockets and expandable main storage area. 20-can capacity. Features water-resistant lining. Made of polyester canvas. 13.5" x 5.5" x 14"

**HERMOSA | 612-00**

Insulated cooler tote with water-resistant liner and front zippered pocket. 24-can capacity. 21" x 8.7" x 13"

639



604



100



138



**BEACH TOTE | 657-00**

Large-capacity beach tote with multiple pockets, adjustable shoulder strap and carry handles. Insulated cooler compartment on the bottom holds up to 7 cans. Made of polyester. 20" x 5.5" x 14"

**CABO BEACH TOTE | 638-00**

Polyester canvas tote with soft cotton/polyester rope handles and a complementing woven bamboo beach mat. Beach mat has an integrated zip-up cover for convenient rolled up storage in flap of tote. Extended mat: 23" x 69" Tote: 20" x 14"





100



138



175



**TAHOE | 598-00**

Extra large insulated cooler tote with water-resistant liner. Features front zippered pocket and 48-can capacity. Made of durable polyester canvas. 23" x 8.3" x 17"

100



175



991



138



**TOPANGA | 619-00**

Insulated cooler tote with water-resistant liner and zippered pocket. 24-can capacity. Made of polyester canvas. 21" x 8.7" x 13" Base 13.5"



138



179



100



**BONGO COOLER/SEAT | 596-00**

Fully-insulated, collapsible cooler with padded cushion-top lid, shoulder strap and removable water-resistant liner. Can also be used as a seat. Wood composite frame covered in polyester. 12.3" diameter x 11.8"

138



175



**CART COOLER | 545-00**

Insulated 25-quart cooler sits on a lightweight steel trolley with extra-wide, easy-glide wheels. Has removable 15-quart water-resistant liner that holds 27 cans. Made of polyester microfiber. 15.3" x 13" x 37.5"





100



138



179



**SIDEKICK | 779-00**

Portable polyester cooler with heat-sealed, water-resistant interior and steel legs. Features large zippered opening to load cooler and smaller opening for convenient retrieval of items inside. Has an adjustable shoulder strap, and folds easily and securely for storage. 18.5" x 18.5" x 27.8"



**SPIGOT | 000-85-000**

Enhance any Can Cooler, 690-00 or Mega Can Cooler, 686-00 by adding a no-drip, steady-stream spigot with hands-free mode. Additional charge applies. Must be requested at time of purchase as in-house assembly is required. Available in white, with blue lever only.



**MINI CAN COOLER | 691-00-000**

Beverage can replica featuring carry handle and removable lid. 6-can capacity. Durable, insulated plastic construction. Can provides an open canvas for you to customize. 7.1" diameter x 11.4"





**MEGA CAN COOLER | 686-00-000**

Extra large beverage can replica featuring carry handle and removable lid. 5-gallon, 27-can capacity. Durable insulated plastic construction. Can also be used as a seat. Can provides an open canvas for you to customize. 12.3" diameter x 20.8"



**CAN COOLER | 690-00-000**

Large beverage can replica featuring carry handle and removable lid. 10-can capacity. Durable insulated plastic construction. Can also be used as a seat. Can provides an open canvas for you to customize. 9.5" diameter x 14"



**COVE | 112-00**

Portable sun and wind shelter. Made of 190T polyester with UV 40+ protection. Has heavy-duty PE floor, fiberglass poles and 25" storage bag with carrying handle. (Requires minimal assembly.)  
Open: 94.5" x 47.3" x 47.3"



**MANTA | 113-00**

Pop-up sun and wind shelter with floor. Made of 190T polyester with UV 40+ protection. Has fiberglass frame and storage bag with carrying strap. 86.5" x 47.3" x 39.5"



**UMBRELLA | 812-00-996**

Multi-color striped umbrella with tilt feature. Has 1.3" diameter pole. Made of polyester. Opens to 6.8' H by 5' diameter.



**UMBRELLA 5.5 | 822-00**

Sun umbrella with 1.3" diameter pole and tilt feature. Made of polyester. Canopy opens to 6.8' H by 5.5' diameter.





125



991



104



325



324

**BEACHCOMBER | 802-00**

Lightweight, portable beach mat. Fully-padded with adjustable reclining backrest.  
 Large zippered pocket and adjustable shoulder strap. Polyester with steel frame.  
 21.3" x 21.3" x 2.8" Fully unfolded: 63.8"

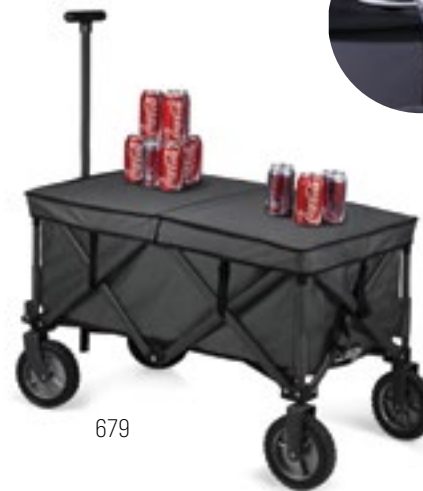




679

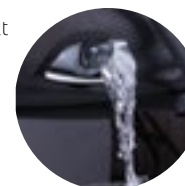


639



679

Liner drainage spout



639



### ADVENTURE WAGON | 739-00

Portable, folding utility wagon with heavy-duty wheels and telescopic handles. Folds compactly. Includes fitted cover with carry handle. Made of 600D polyester with powder coated steel frame. Maximum weight capacity, 225 lbs. 36" x 18" x 13"

### ADVENTURE WAGON ELITE | 739-85

Upgrade the Adventure Wagon by adding a sturdy folding table top and a fitted, fully removable waterproof liner with drainage spout. Liner: 32" x 16" x 15" Table: 35" x 19" x 2.8"





All-terrain wheels provide outstanding maneuverability through almost any terrain



Top can be used as a table



**ADVENTURE WAGON - ALL-TERRAIN | 741-00-679**

Portable, folding utility wagon with large all-terrain wheels and telescopic handles. Folds compactly. Includes fitted cover with carry handle. Made of 600D polyester with powder coated steel frame. Maximum weight capacity, 225 lbs. 36" x 18" x 13"

**ADVENTURE WAGON - ALL-TERRAIN ELITE | 741-85-679**

Upgrade the Adventure Wagon - All-Terrain by adding a sturdy folding table top and a fitted, fully removable waterproof liner with drainage spout. Liner: 32" x 16" x 15" Table: 35" x 19" x 2.8"



100



777



550



101



102



138



182



991



179



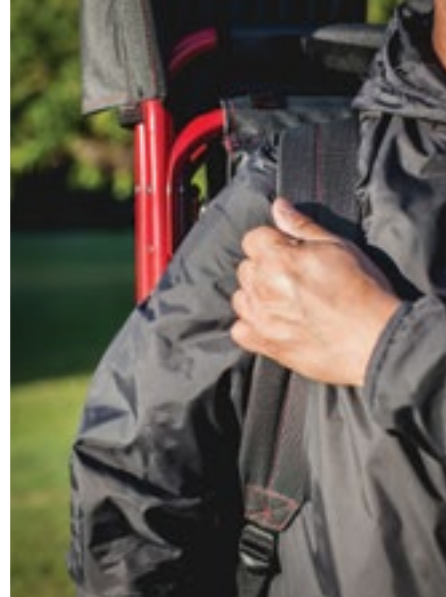
121



### SPORTS CHAIR | 809-00

Folding chair with fold-out side table, side pockets, and insulated drink holders. Features 19.5" wide seat, detachable shoulder strap, and loop on backrest to secure umbrella. Made of aluminum and polyester canvas. Weight capacity, 300 lbs. Chair: 19.5" x 13.5" x 7.5"/32" Table: 11" x 14.5"





Umbrella 5.5 (822-00)  
sold separately.  
See pg. 42



**RIBBED PADDING**  
Special ribbed padding  
in seat and backrest make  
this chair the ultimate in  
outdoor comfort.

**CELL PHONE  
POCKET**  
Handy easy-to-  
access right-side  
pocket to hold  
your cell phone

**STURDY FABRIC LOOPS  
SECURE UMBRELLA OR  
SPORTS BANNER**



**FOLDABLE WITH  
BACKPACK STRAPS**  
Chair folds compactly  
and securely for easy  
transportation.

Comfortably padded  
backpack straps make  
carrying a breeze.



639

**FOLD-OUT TABLE**  
Expandable fabric shelves  
store conveniently under  
table when not in use.

Molded cup holder  
prevents spills

**LIGHTWEIGHT  
ALUMINUM FRAME**  
350 lb. weight capacity

Base rails prevent sinking  
into sandy surfaces.



600

**FULLY DETACHABLE COOLER BAG**  
24-can capacity  
Special pockets for cell phones, portable  
music devices, tablets and more  
External bungee cord secures a towel or  
miscellaneous items.  
Interior side has extra large pocket for  
magazines, newspapers or books.  
Detachable shoulder strap enables cooler  
bag to be used independently  
of the chair.



679

Black frame has textured finish.



**FUSION CHAIR | 807-00**

Made of aluminum with polyester canvas.  
Weight capacity, 350 lbs. Chair: 19.5" x 13.5" x 7.5"/32"  
Cooler: 15" x 4" x 16.5" Table: 11" x 14.5"



138



175



WEIGHT  
**400-LBS**  
CAPACITY



WEIGHT  
**500-LBS**  
CAPACITY

**PT-XL CAMP CHAIR | 793-00**

Portable extra wide folding chair with 24" seat. Includes beverage pocket on armrest and carrying bag with shoulder strap. Made of 900D polyester ripstop on a powder coated steel frame. Weight capacity, 400 lbs. 24" x 17.5" x 24.5"/37.5"

— 24" WIDE —  
**OVERSIZED**  
• CHAIRS •  
STURDY ★ DURABLE

**BIG BEAR CAMP CHAIR | 808-00-175**

Extra-large folding camp chair with retractable cup holder and removable insulated cooler with 9-can capacity. Includes carrying bag. Made of steel and polyester. Weight capacity, 500 lbs. 24" x 26" x 25"/42"





138



140



175

WEIGHT  
**400-LBS**  
CAPACITY



179



138



140



**OUTLANDER CAMP CHAIR | 800-00**

Folding camp chair with retractable cup holder and removable insulated cooler with 9-can capacity. Includes carrying bag. Made of steel and polyester. Weight capacity, 400 lbs. 19.5" x 22" x 19.5"/36"

**PTZ CAMP CHAIR | 804-00**

Folding camp chair with a mesh cup holder in armrest. Includes carrying bag. Made of 600D polyester with powder coated steel frame. Weight capacity, 300 lbs. 16" x 21" x 19.3"/33.8"





**CAMPSITE CHAIR | 806-00**

Folding camp chair with zippered pocket on back of headrest, a mesh cup holder in the armrest, and an optional pillow in the front of the headrest. Made of 600D polyester with powder coated steel frame. Weight capacity, 300 lbs. 20.8" x 17.5" x 25" / 37.5"



**TRANQUILITY CHAIR | 792-00**

Portable, folding beach chair with padded armrests and large zippered pocket on back of headrest. Made of 600D polyester with powder-coated steel frame. Weight capacity, 225 lbs. Includes a matching drawstring carrying bag. 20.3" x 15" x 25.8" / 27.5"







100



138



130



175



three seating positions



### RECLINING CAMPING CHAIR | 803-00

Folding chair with padded seat and backrest, three seating positions, adjustable armrests, storage and carrying tote and insulated drink holder in armrest. Features a large zippered pocket on back of chair. Weight capacity, 300 lbs. Made of polyester canvas and steel. 23.5" x 25" x 23.8"/40.5"



138



100

### MONACO BEACH CHAIR | 790-00

Lightweight, portable reclining beach chair with backpack straps. Features a 19.5" wide seat with six chair back positions, an integrated cup holder in right armrest, and a pillow. Weight capacity, 300 lbs. Made of durable polyester on an aluminum frame. 19.5" x 16.5" x 24.5"/34"







Invert armrests for wider seating area.



138  
six seating positions



100



179



104



615-00-324



615-00-325



**VENTURA SEAT | 618-00**

Portable recliner featuring adjustable backpack-style shoulder straps, six adjustable backrest positions, and integrated armrests. Polyester with steel frame construction.  
Flat: 20" x 32" x 2"





179



138



104



137



138



179



100



**STADIUM SEAT | 627-00**

Lightweight padded seat with multiple pockets. Folds into an easy-to-carry tote. Made of polyester canvas. 17" x 15" x 3"



**ONIVA SEAT | 626-00**

Portable recreational recliner with shoulder strap. Features six adjustable backrest positions. Made of polyester with steel frame, and water resistant microfiber base. 22" x 2.3" x 29"



**TRAVEL TABLE | 799-00**

Portable, soft-top table with six cup holders and two zippered pockets. Equipped with easy-release table leg locks, umbrella loop, and matching drawstring carry bag. Made of 600D polyester with a powder-coated steel frame. Weight capacity, 90 lbs. 42.5" x 27.5" x 27.5"



**ALUMINUM PICNIC TABLE | 801-00-133**

Folding picnic table with four seats (maximum weight capacity, 250 lbs. per seat). Aluminum frame with PP plastic seats and laminate table top. Seats fold into table top which converts into carrying case. Includes hole for umbrella. Open: 32" x 53.5" x 26.5" Folded: 35.8" x 4.5" x 16.7"







**PICNIC TABLE - SPORT | 811-00**

Folding picnic table with four seats (maximum weight capacity, 250 lbs. per seat). Made of ABS and PP plastic on an aluminum alloy frame. Price includes full-sized, full-color Chroma-tec decoration on table.  
 Open: 54" x 34" x 25.8" Folded: 33.5" x 4" x 13"



Umbrella 5.5 sold separately. See pg. 42



**PICNIC TABLE | 811-00**

Folding picnic table with four seats (maximum weight capacity, 250 lbs. per seat). Made of ABS and PP plastic on an aluminum alloy frame. Open: 54" x 34" x 25.8" Folded: 33.5" x 4" x 13"



**BLANKET TOTE | 820-00**

Outdoor picnic blanket with shoulder strap and zippered pocket in flap.  
Made of polyester fleece with water-resistant underside.  
Open: 59" x 51" Folded: 13" x 8" x 3"





109



177



777



991



778



107



**BLANKET TOTE XL | 920-00**

Extra large outdoor picnic blanket with shoulder strap and zippered pocket in flap. Made of polyester fleece with water-resistant underside. Open: 70" x 80" Folded: 18" x 11" x 5"





172



125



138



095



322



325



324



300

### VISTA BLANKET | 821-00

Washable outdoor blanket that zips into a convenient carry tote.  
Has an adjustable carry strap and an extra-large pocket on front of tote.  
Open: 59" x 51" Folded: 12.8" x 16.5" x 2"





**THE FESTIVAL BLANKET**  
 BY PICNIC TIME®  
 MADE IN AMERICA



**FESTIVAL BLANKET | 824-99-805**

Patchwork design blanket with solid denim underside. Machine washable and dryable. Each blanket is handmade; fabric patterns and pattern placement may vary. Color scheme will remain the same. 57" x 67"



125



212



325



138



172

**VISTA BLANKET XL | 921-00**

Extra-large, washable outdoor blanket that zips into a convenient carry tote. Has an adjustable carry strap and an extra-large pocket on front of tote. Made of polyester. Open: 72" x 60" Zipped: 15" x 19" x 2"







**ACE | 703-00-505**

Executive putter set in travel case. Includes two balls, one practice cup, and four-piece putter. Case made of wood composite with mahogany finish. 12.8" x 11" x 2.8"



**MINI BEAN BAG THROW | 768-00-000**

Double-sided bean bag game board featuring bean bag throw and tic-tac-toe. For single use or team play. Board can be decorated with your custom artwork. Includes one board and eight bean bags. 12.3" x 20" (flat)

custom print





000 custom print



901



### BEAN BAG TOSS TRAVEL SET | 758-00

Portable bean bag toss game for singles or team play. Includes a set of two 18" x 28" boards that latch together for storage, six bean bags, and a polyester carrying tote with shoulder strap. Boards provide an open canvas for you to customize.



### BEAN BAG THROW - FOOTBALL | 769-00-901

Bean bag toss game for singles or team play. Includes a set of two 18" x 28" boards, six bean bags, and a polyester carrying tote with shoulder strap. Boards with football field provide an open canvas for you to customize.

### BEAN BAG THROW - CUSTOM | 769-00-000

Bean bag toss game for singles or team play. Includes a set of two 18" x 28" boards, six bean bags, and a polyester carrying tote with shoulder strap. Boards provide an open canvas for you to customize.



**VULCAN | 770-00-175**

The ultimate all-in-one, insulated tailgating gas grill with removable water-resistant cooler, three BBQ tools, and drawstring bag for grill. Carries BBQ and fully-stocked cooler at the same time! 22-can capacity cooler. Made of polyester and PVC. Pocket on back attaches to most trolleys. 21" x 14.6" x 12"



**VULCAN WITH TROLLEY | 770-85-175**

Vulcan (as shown and described above) with trolley attachment.





**PORTAGRILLO | 776-00-175**

Heavy-duty, portable gas grill with built-in igniter and two slide-out side tables. Legs fold for easy storage. Propane not included. Removable grease tray. 8,018 btu/hour. Grilling surface: 17.5" x 13.5" Folded: 25" x 18.6" x 16.8"



**CALIENTE | 771-00-175**

Compact, portable charcoal BBQ grill in carrying tote that doubles as a cooler. 6-can capacity with heat-sealed, water-resistant lining. Tote made of polyester. 10" diameter grate with grilling surface of 78.5 square inches. Cooler bag: 11.6" diameter x 8.3"



**BUCCANEER | 750-00-175**

The original all-in-one, insulated tailgating charcoal grill with removable water-resistant cooler, three BBQ tools, and drawstring bag for grill. Carries BBQ and fully-stocked cooler at the same time! 24-can capacity cooler. Made of polyester and PVC. Features shoulder strap and water-resistant base. 20" x 14" x 12"



**X-GRILL | 775-00-175**

Compact portable charcoal BBQ grill with a removable cooking grate and a polyester carrying tote with shoulder strap. Electro-plated finish. Grilling surface: 18.5" x 11" Flat: 19.1" x 19.6" x 1.3"



**FIERO | 681-00-179**

BBQ case with five stainless steel tools: knife, basting brush, fork, tongs, and spatula, all with aluminum handles. Case made of aluminum. 19.6" x 7.6" x 3.4"



**BBQ KIT COOLER | 757-06-175**

Heat-sealed interior cooler tote with multiple utility pockets, shoulder strap and handles; 46-can capacity. Includes eight barbecue/picnic accessories. 21" x 11" x 10"



**18-PIECE BBQ CASE | 748-00-121**

Deluxe BBQ tool set in carrying case. Contains 18 assorted stainless steel tools with wooden handles. Case made of molded plastic. 22" x 12" x 3.5"



**BBQ APRON TOTE PRO | 635-88-179**

Full-sized BBQ apron with multiple pockets that easily folds into a BBQ tote with shoulder strap. Equipped with three-piece BBQ tool set, BBQ mitt and chef's hat. Made of polyester canvas.





**3-PIECE BBQ TOTE | 749-03-175**

Three-piece BBQ tool set; folds into an easy-to-carry tote with carrying handle and shoulder strap. Made of polyester canvas. 22" x 2" x 5"

175



137



100



**METRO BBQ TOTE | 747-03**

Three-piece BBQ tool set with silicone handles; zips into an easy-to-carry tote with carrying strap. Made of polyester canvas. 18.8" x 1.6" x 6"





**ROADSIDE EMERGENCY KIT | 699-00-179**

Triangular storage tote that doubles as a reflective warning sign.  
Contains tools and essentials for emergency roadside repair. 12" x 3.5" x 12"





**TRUNK BOSS | 715-00-179**

Expandable trunk organizer with removable insulated cooler tote that holds up to 25 12-oz. cans. Folds and stores in pocket on cooler. Made of polyester. Tote: 11.8" x 5.8" x 14" Trunk Organizer: 24" x 18" x 8"



**PROFESSIONAL TOOL KIT | 709-00-000**

Deluxe tool set in durable case. Includes a 22-piece ratchet set, 10-bit screwdriver set and more. Made of steel and molded plastic. 14" x 3" x 14"



LEGACY®

a Picnic Time brand

---

OUR LEGACY BRAND OFFERS A MATURE AND REFINED TAKE ON THE BEER, WINE, AND SPIRITS CULTURE. MORE PEOPLE ARE EXCITED ABOUT CRAFT BEERS, BATCH VINTAGES AND AGED BOURBONS THAN EVER BEFORE. WE WANT TO CULTIVATE A SENSE OF SOPHISTICATED THAT IS HIP AND RELEVANT.

THIS IS OUR LEGACY.

BEER

SPIRITS

WINE







WHEAT

AMBER

LAGER

STOUT





PILSNER | 602-06-512

ATTRACTIVE BOXED SET WITH TWO TALL 12-OZ. GLASSES, TWO REAL CORK COASTERS, AND BOTTLE OPENER. CASE MADE OF SOLID ACACIA. 12" X 10" X 5.3"



CRAFT BEER FLIGHT | 601-05-512

TWO-TIERED ACACIA TRAY WITH FOUR 4-OZ. BEER GLASSES SUSPENDED IN TOP SHELF, A CHALKBOARD PANEL, SOAPSTONE PENCIL, AND HOLLOWED AREAS TO HOLD BEER CAPS AND PENCIL. 12" X 4.4" X 5.3"







**DOUBLE-GROWLER TOTE | 613-00-140** NEW

INSULATED GROWLER TOTE FOR TWO 64-OZ. GROWLERS. FEATURES ADJUSTABLE SHOULDER STRAP. MADE OF WAXED COTTON CANVAS WITH FAUX SUEDE ACCENTS. 12" X 10.5" X 5.3"

**DOUBLE-GROWLER TOTE WITH GROWLERS | 613-85-140**



311

NEW **BEER CADDY | 762-00**

INSULATED SOFT-SIDED COOLER WITH REMOVABLE PADDED DIVIDER, SHOULDER STRAP, AND INTEGRATED RETRACTABLE BOTTLE OPENER. HOLDS SIX BOTTLES SECURELY. MADE OF WAXED COTTON CANVAS. 9" X 5.5" X 6.8"



# PICK YOUR GROWLER

# ADD A TOTE (TOTES AVAILABLE WITH OR WITHOUT GROWLER)

## GLASS GROWLER | 104-00-610

64-OZ. GROWLER WITH SCREW TOP METAL LID.  
MADE OF AMBER GLASS. 5" DIAMETER X 11" H



104-00-610

+



610-85-105



610-85-138

## STAINLESS STEEL



102-00-000

+



610-82-105



610-82-138

## MATTE BLACK



102-00-175

+



610-84-105



610-84-138

## ROSE GOLD



102-00-106

+



610-83-105



610-83-138

NEW

## STAINLESS STEEL GROWLER | 102-00

SINGLE-WALL, 64-OZ. STAINLESS STEEL GROWLER  
WITH SWING-TOP STOPPER. 4.8" DIAMETER X 10.8" H







610-85-140



BLACK TOTE ONLY  


610-85-311

**GROWLER TOTE | 610-00**

INSULATED CARRY TOTE WITH ADJUSTABLE SHOULDER STRAP, DESIGNED TO HOLD A 64-OZ. GLASS OR STAINLESS BEER GROWLER (NOT INCLUDED). MADE OF WAXED CANVAS. 5.5" DIAMETER X 9" H



610-82-140



610-82-311

**GROWLER TOTE WITH 64 OZ. GLASS GROWLER | 610-85**

INSULATED CARRY TOTE WITH ADJUSTABLE SHOULDER STRAP AND EMPTY 64-OZ. GLASS BEER GROWLER. TOTE MADE OF WAXED CANVAS. 5.5" DIAMETER X 11.5" H



610-84-140



610-84-311

**GROWLER TOTE WITH 64 OZ. STAINLESS STEEL GROWLER**

STAINLESS STEEL, 610-82, MATTE BLACK, 610-84, AND ROSE GOLD, 610-83

INSULATED CARRY TOTE WITH ADJUSTABLE SHOULDER STRAP AND EMPTY 64-OZ. STAINLESS STEEL BEER GROWLER. TOTE MADE OF WAXED CANVAS. 5.5" DIAMETER X 11.5" H



610-83-140



610-83-311

**NEW**



**SIX - PORTER | 595-00-179**

INSULATED SOFT-SIDED COOLER WITH REMOVABLE DIVIDER, SHOULDER STRAP, AND INTEGRATED RETRACTABLE BOTTLE OPENER. HOLDS SIX BOTTLES SECURELY. MADE OF POLYESTER. 9" X 5.5" X 6.8"



**NEW WHISKEY BOX | 605-10-509**

ATTRACTIVE BOXED SET WITH TWO 8-OZ. HEAVY BOTTOM LOWBALL GLASSES, TWO SANDSTONE COASTERS, AND SIX SOAPSTONE WHISKEY STONES. WHISKEY NOT INCLUDED. CASE MADE OF OAK. 8.7" X 7.2" X 4"





**NEW** BAR-BACKPACK | 670-44-105

INSULATED, PADDED TOTE SPECIALLY DESIGNED TO HOLD A VARIETY OF BAR ACCESSORIES. INCLUDES 16 ESSENTIAL BAR TOOLS AND ROOM FOR THREE LARGE BOTTLES. FEATURES A REMOVABLE BAR TOOLS ORGANIZER. MADE OF WAXED COTTON CANVAS. 11.5" X 7.8" X 15"



MADISON | 668-44-508

FULLY-EQUIPPED TABLETOP BAR WITH PULL-OUT TRAY.  
INCLUDES 19 BAR ACCESSORIES. MADE OF DARK-STAINED ACACIA.  
14" X 10.5" X 11.3"





**HAMILTON | 669-48-179**

FULLY-EQUIPPED THREE-BOTTLE PORTABLE COCKTAIL CASE WITH 16 BAR ACCESSORIES. BALLISTIC NYLON ACCENTED WITH PREMIUM LEATHERETTE. 10.5" X 10.3" X 14"

183



472



**MANHATTAN | 667-43**

INSULATED TWO-BOTTLE COCKTAIL CASE, FULLY OUTFITTED. INCLUDES SHOULDER STRAP. MADE OF PREMIUM LEATHERETTE. 10.5" X 10.3" X 14"



**CANTINERO | 828-00-505**

WOODEN SHOT-SERVING TRAY THAT INCLUDES SIX 2-OZ. HEAVY-BOTTOM SHOT GLASSES, ONE SALT SHAKER, AND ONE CERAMIC GARNISH DISH. MADE OF ACACIA. 14.8" X 5.5" X 3.3"







ÉLAN | 868-00-505

STAINLESS STEEL, WAITER-STYLE CORKSCREW WITH BAMBOO HANDLE.  
BOX MADE OF SOLID BAMBOO. 5.7" X 2.3" X 1.3"



MAESTRO | 890-00-506

THREE-PIECE WINE TOOL SET IN A BAMBOO BOX. INCLUDES CORKSCREW WITH BAMBOO HANDLE,  
BAMBOO DRIP RING WITH CORK INTERIOR, AND BOTTLE STOPPER WITH BAMBOO AND CORK ACCENTS.  
6.4" DIAMETER X 1.4"



MESAVINO | 841-00-505

PORTABLE WINE SERVING TABLE. FEATURES TWO WINE GLASS HOLDERS, A RECESSED AREA FOR FOOD,  
A CARVED-OUT SECTION TO HOLD A WINE BOTTLE STEADY, AND RETRACTABLE FOLDING LEGS.  
MADE OF BAMBOO. 15" X 11" X 6" WITH LEGS DOWN. (GLASSES NOT INCLUDED.)

MESAMIO | 842-00-505

PORTABLE WINE SERVING TABLE. FEATURES CARVED-OUT AREAS TO HOLD TWO WINE GLASSES,  
ONE BOTTLE OF WINE, PLATES OR FINGER FOODS. HAS RETRACTABLE FOLDING LEGS.  
MADE OF BAMBOO. 18.9" X 14.5" X 6" WITH LEGS DOWN. (GLASSES AND PLATES NOT INCLUDED.)

120



**MERITAGE | 629-60**

INSULATED COOLER TOTE WITH WINE AND CHEESE SERVICE FOR TWO. HOLDS TWO BOTTLES. MADE OF POLYESTER CANVAS. 15" X 13" X 19"



175



**WAITER-STYLE CORKSCREW | 862-00-505**

WAITER-STYLE CORKSCREW WITH RETRACTABLE FOIL-CUTTING KNIFE. MADE OF STAINLESS STEEL WITH WOODEN HANDLE. 4.3" X 1" X 0.4"



**VOLARE | 622-04-777**

INSULATED WINE AND CHEESE COOLER TOTE. HOLDS TWO BOTTLES. ADJUSTABLE SHOULDER STRAP. MADE OF POLYESTER CANVAS. 9.5" X 4.5" X 14"



**GRENACHE | 888-00-179**

SEVEN-PIECE BOX SET INCLUDES CORKSCREW, DRIP RING, TWO BOTTLE STOPPERS, POURER/STOPPER, FOIL CUTTER AND THERMOMETER. BOX COVERED IN BLACK LEATHERETTE. 9.4" X 6.6" X 2.1"





**SYRAH | 887-00-179**

FIVE-PIECE BOX SET INCLUDES CORKSCREW, DRIP RING, FOIL CUTTER, POURER/STOPPER AND THERMOMETER. BOX COVERED IN BLACK LEATHERETTE. 8.8" X 4.9" X 2.1"



**CABERNET | 889-00-179**

EIGHT-PIECE BOX SET INCLUDES LEVER-STYLE CORK-PULL, TWO BOTTLE STOPPERS, DRIP RING, FOIL CUTTER, POURER/STOPPER, THERMOMETER AND EXTRA CORK-PULL IN LEATHERETTE BOX. 8.7" X 7.2" X 4.9"





**BODEGA | 597-00-179**

INSULATED TWELVE-BOTTLE WINE TOTE/COOLER WITH INTEGRATED TROLLEY. HAS TELESCOPING HANDLE WITH PUSH-BUTTON RELEASE, AND WATER-RESISTANT LINER WITH REMOVABLE DIVIDER. HAS THREE LARGE EXTERIOR POCKETS. 40-CAN/12-BOTTLE CAPACITY. COOLER MADE OF POLYESTER. 15" X 14.3" X 17.3"



**TROLLEY | 738-00-000**

39" TALL, 18" FOLDED. BASE 7.5" X 8" WITH STABILITY BAR. MAXIMUM LOAD CAPACITY, 77 LBS.



**CELLAR WITH TROLLEY | 660-85-179**

INSULATED SIX-BOTTLE WINE TOTE/COOLER WITH TROLLEY ATTACHMENT. INCLUDES A REMOVABLE DIVIDER AND WATER-RESISTANT LINER. 36-CAN CAPACITY. POLYESTER RIPSTOP EXTERIOR. COOLER: 14" X 13" X 14"

**CELLAR | 660-00-179**

INSULATED SIX-BOTTLE WINE TOTE/COOLER. INCLUDES A REMOVABLE DIVIDER AND WATER-RESISTANT LINER. 36-CAN CAPACITY. POLYESTER RIPSTOP EXTERIOR. 14" X 13" X 14"





179



112



**WINE COUNTRY TOTE | 617-00**

INSULATED TWO-BOTTLE WINE TOTE WITH CHEESE SERVICE AND CORKSCREW. FEATURES ADJUSTABLE SHOULDER STRAP, CARRY HANDLES, AND LARGE COMPARTMENT FOR FOOD AND SUNDRIES. 14" X 12" X 8"

105



322



**SONOMA | 616-60**

EXPANDABLE WINE AND CHEESE TOTE WITH SERVICE FOR TWO. HOLDS THREE BOTTLES. MADE OF POLYESTER. 12" X 13.5" X 6"



175



140



138



**MORENO | 624-04**

INSULATED THREE-BOTTLE WINE TOTE WITH DETACHABLE, ADJUSTABLE SLING STRAP/BACKPACK STRAPS. INCLUDES WINE AND CHEESE SERVICE. MADE OF 1200D POLYESTER. 10.3" X 5.1" X 13.3"





SHOULDER STRAP CONVERTS TO BACKPACK STRAPS

**NEW** ADVENTURE WINE TOTE | 505-05-140

INSULATED DOUBLE WINE TOTE WITH DELUXE SERVICE FOR TWO. FEATURES A PORTABLE ACACIA TABLE, 11" X 11" X 1.6", AND SECURED SIDE LOAD WINE STORAGE. MADE OF WAXED COTTON CANVAS. 12.6" X 4.7" X 11.4"



118

175

120

138



**DUET | 623-04**

INSULATED WINE AND CHEESE COOLER TOTE. HOLDS TWO BOTTLES.  
ADJUSTABLE SHOULDER STRAP. MADE OF POLYESTER CANVAS. 9.5" X 4.5" X 14"



472

INSULATED SINGLE-BOTTLE WINE TOTE/COOLER WITH SERVICE FOR TWO. FEATURES ADJUSTABLE SHOULDER STRAP.  
MADE OF POLYESTER CANVAS. 7.5" X 3.8" X 13.5"



777

**BAROSSA | 522-49**



**WINE SACK | 631-95-175**

INSULATED SINGLE-BOTTLE WINE DUFFEL WITH ADJUSTABLE STRAP.  
INCLUDES STAINLESS STEEL CORKSCREW. MADE OF POLYESTER.  
4.5" DIAMETER X 12"



**ESTATE | 514-49-521**

INSULATED SINGLE-BOTTLE WINE TOTE/COOLER WITH SERVICE FOR TWO.  
FEATURES ADJUSTABLE SHOULDER STRAP. MADE OF POLYESTER CANVAS.  
8.5" X 4.5" X 14"





138

179



100



**SAMBA | 647-95**

LIGHTWEIGHT NEOPRENE TWO-BOTTLE WINE TOTE. INCLUDES STAINLESS STEEL WAITER-STYLE CORKSCREW. 6.3" X 3.3" X 13.6"



100



138

179



**MAMBO | 646-95**

LIGHTWEIGHT NEOPRENE SINGLE-BOTTLE WINE TOTE. INCLUDES STAINLESS STEEL WAITER-STYLE CORKSCREW. 3.2" X 3.3" X 13.6"





T O S C A N A <sup>TM</sup>

a Picnic Time brand

---

Toscana encompasses both a modern appeal and the essence of old world hospitality. We aim to create centerpieces to the experiences that people have when enjoying the company of others. Something that facilitates togetherness and the memories that result.

This is where you can find the old world, redefined to a modern home.

SERVEWARE

CHEESE BOARDS

CUTTING BOARDS











**Fajita Station | 986-06-512**

Acacia serving tray with 8" ceramic tortilla warmer, 8" cast iron skillet, and three ceramic garnish dishes. 18" x 14" x 0.8"





Removable acacia trivet with inlaid silicone heat rings located under dutch oven



**Dutch Oven Station | 988-04-512**

Acacia serving tray with 4-quart enameled cast iron Dutch oven, removable 9" acacia trivet with inlaid silicone heat rings, and a 14" acacia spoon. 19" x 15.8" x 1"





**Acacia Pizza Peel | 891-00-512**

Flat paddle with beveled edge, used to transfer pizza in and out of oven.  
 Handle with round edges for comfort and steady grip.  
 Made of acacia. 22.3" x 13.8" x 0.5"



**NEW Artisan Serving Plank | 892-00-512**

Flat, paddle shaped serving plank with live bark edge and hemp hanging loop.  
 Made of acacia. 24" x 8" x 0.8"





**Parlor | 870-00-505**

This Picnic Time original design includes an ice cream mixing set featuring a bamboo tray with carved-out sections to hold a removable marble slab (for freezing), three ceramic dishes, and two stainless steel mixing spades. Add ice cream and mix-ins to create a delicious treat all your own.  
17" x 13" x 1.8"



**Symphony** | 949-13-505

Bamboo serving tray featuring three ceramic condiment bowls, one large serving dish, and six cocktail picks that sit in a pick caddy. 11.4" x 4"



**Enigma** | 954-02-505

Offset reversible bamboo cutting board and ceramic base tray. 13" x 9" x 0.8"



**Peninsula** | 953-05-505

Ceramic serving tray and nested bamboo cutting board featuring a ceramic bowl and two cheese tools with porcelain handles. 11.4" x 11.4" x 1.9"



**Island** | 947-02-505

Round ceramic serving tray with removable round bamboo center. 13" x 11"





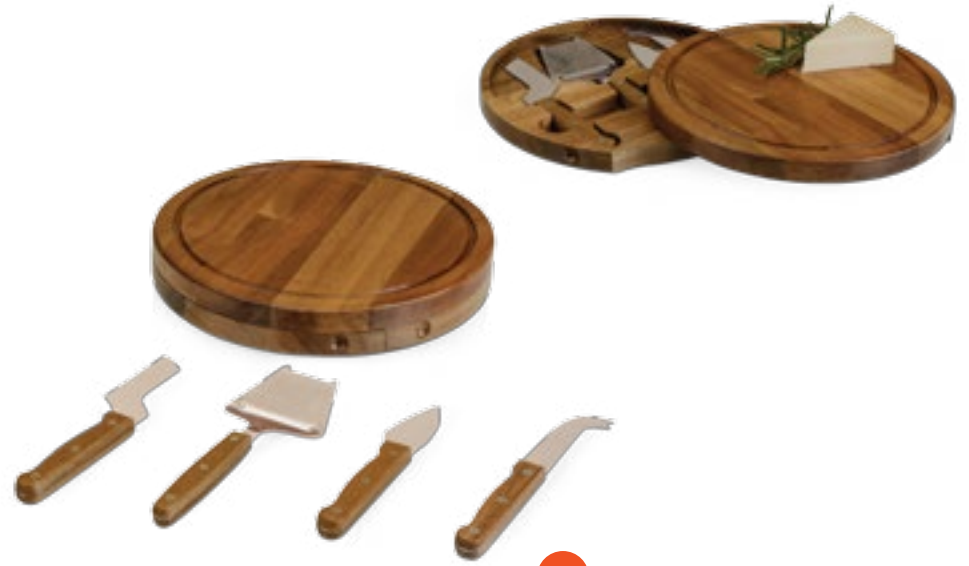




**Acacia Brie** | 879-03-512

NEW

Circular cheese/cutting board and three stainless steel cheese tools with wooden handles. Board swivels open to reveal tools. Made of acacia. 7.5" diameter x 1.2"



NEW

**Acacia Circo** | 855-04-512

Circular cheese/cutting board and four full-tang stainless steel cheese tools with wooden handles. Board swivels open to reveal tools. Made of acacia. 10.2" diameter x 1.6"







**Brie** | 878-00-505

Circular cheese/cutting board and three stainless steel cheese tools with wooden handles. Board swivels open to reveal tools. Made of rubberwood. 7.5" diameter x 1.2"



**Circo** | 854-00-505

Circular cheese/cutting board and four full-tang stainless steel cheese tools with wooden handles. Board swivels open to reveal tools. Made of rubberwood. 10.2" diameter x 1.6"



**Festiva** | 852-00-505

Cheese board with slide-out drawer that holds three stainless steel cheese tools and a corkscrew. Made of rubberwood. 8.7" x 7.9" x 2"



**Formaggio** | 856-00-505

Oval cutting board with slide-out drawer to hold three stainless steel cheese tools and a corkscrew. Made of bamboo. 13" x 8" x 2"



**Regalio** | 813-00-505

Tiered serving tray/cheese board with three full-tang cheese tools and swiveling tiers. Made of rubberwood. 10" x 10" x 11.5"



**Colby** | 845-00-506

Combination cheese board and serving tray with three full-tang cheese tools in pull-out drawer built into side of board. Made of rubberwood. 13.4" diameter x 2"





**Asiago** | 869-00-505



Folding cheese board with tuck-away panel that holds four hollow-handled stainless steel cheese tools. Made of rubberwood. 11" x 8.5" x 1.7"



**Carnaval** | 819-00-505

Compact, folding cutting board. Includes four stainless steel cheese tools, each with a different colored wooden handle. Made of bamboo. 8.7" x 7.9" x 1.3"





**Concavo | 823-00-505**

Rectangular cutting board and serving tray with curved surface to cradle food. Comes with three cheese tools, three ceramic cheese markers, and a wet erase pen. Made of bamboo. 13.5" x 8" x 2"



**Leaf | 830-00-505**

Leaf-shaped swivel-style cheese/cutting board with inlaid stripe design. Includes three stainless steel cheese tools and corkscrew with striped wooden handles. Made of bamboo. 18.1" x 9.6" x 1.6"



**Mariposa | 849-00-505**

Gourmet two-toned cheese board with stainless steel wine and cheese accessories tucked away in two swing-out drawers. Made of bamboo. 14.8" x 8.8" x 2.8"



**Soirée | 853-00-505**

Folding wooden cutting board with a cheese wire and three stainless steel cheese tools. Magnets in board keep tools secured. Made of bamboo. 9.5" x 11" x 1.5"





Delio - Acacia | 833-00-512

Cutting board and cheese tools set. Features a chalkboard area. Includes one cheese knife, three cheese markers, and one soapstone pencil. 15" x 10" x 0.8"





**Concerto** | 919-00-505

Glass-top cutting board with removable serving tray top and three stainless steel cheese tools.  
 Made of bamboo and tempered glass. 13" x 10" x 1.8"





**Icon | 910-00-505**

Rectangular glass-top cheese/cutting board with removable serving tray top and full-tang stainless steel knife stored in board for convenience. Made of rubberwood with dark bamboo rim, and 11" x 8.5" tempered glass. Available with a variety of layouts to choose from, including your favorite Collegiate or NFL football field, NBA court, MLB stadium, select Harley-Davidson® and Army designs. 15.2" x 10" x 0.8"



**NEW Reserve | 817-00-508**

Wine bottle-shaped serving board with removable glass insert. Made of dark-stained rubberwood. 4.5" x 14.8" x 0.8"

\*MSRP for licensed product is higher than listed MSRP



**Mariner | 904-00-505**

Revolving helm-shaped cheese board and four stainless steel cheese tools stowed in the side of the board. Made of rubberwood. 7.9" diameter x 1.8" (board only)



**Sailboat | 905-00-505**

Sailboat-themed cheese board with two full-tang stainless steel cheese tools, one corkscrew, and removable sail for additional cutting space. Made of bamboo and cotton canvas. 17" x 7" x 1.7"







Green Bay Packers only

**Swiss | 850-00-505**

Wedge-shaped, swivel-style cutting board with Swiss cheese inlay decoration, and three stainless steel cheese tools. Made of rubberwood. 10" x 11.7" x 1.9"

**Piano | 900-00-505**

Grand piano-shaped cheese board. Features recessed juice groove on lid, two stainless steel cheese tools, and a corkscrew under piano lid. Piano lid stands open on a lid-prop stick. Made of bamboo. 9.1" x 9.1" x 2.7"



**Guitar | 898-00-505**

Guitar-shaped swivel-style cheese board. Includes two stainless steel cheese tools and a corkscrew. Made of light rubberwood with dark bamboo inlays. 13.9" x 7.4" x 1.9"

**Heart | 918-00-505**

Heart-shaped, swivel-style cutting board with stainless steel cheese knife, corkscrew, and bottle stopper. Made of light and dark bamboo. 9.9" x 9.3" x 1.6"



**Cheese Knife | 859-00-505**

Cheese knife with 3.5" sharp serrated edge. 7.5" long.  
Made of stainless steel with acacia handle.

**Wood Cutting Board | 851-00-000**

Square cutting board with rounded edges.  
Made of rubberwood. 6" x 6" x 0.8"



**Botella | 818-00-505**

Wine bottle-shaped cutting board featuring beveled edges  
and recessed juice groove. Made of rubberwood.  
4.8" x 15.4" x 0.8"



**Silhouette | 846-00-505**

Swivel-style cheese board shaped like a wine bottle with a recessed juice groove.  
Comes with two stainless steel cheese tools and two wine accessories.  
Made of rubberwood and bamboo. 13" x 5.8" x 2"



**Herb Chop Block | 897-00-505**

Compact herb chopping block with double-bladed knife that stores conveniently in board.  
Made of rubberwood. 11.8" x 8.5" x 1.5"





**Ovale - Acacia** | 893-00-512

Cutting board with recessed juice groove.  
Made of acacia. 14" x 9" x 0.8"



**Meridian** | 857-00-510

Rectangular-shaped black walnut cheese slicer  
with stainless steel handle and cheese wire. 9.8" x 6.8" x 0.5"



**Kickoff | 908-00-505**

Extra large football-shaped cutting board and serving tray with laces design and recessed juice groove. Made of eco-friendly bamboo. 20.3" x 12" x 0.8"



**HomeRun! | 894-00-505**

Round two-toned cutting board with baseball design. Made of eco-friendly bamboo. 12" diameter x 0.8"







**Touchdown! | 896-00-505**

Football-shaped cutting board with laces design.  
Made of bamboo. 16" x 8.8" x 0.8"



**Touchdown Pro | 896-00-506**

Football-shaped cutting board with laces design. Made of bamboo. 16" x 8.8" x 0.8" Only available licensed.



**Quarterback | 907-00-505**

Deluxe football cutting board with wine and cheese tools. Made of eco-friendly bamboo.  
With three stainless steel tools—cheese knife, cheese fork and waiter-style corkscrew.  
15" x 8.8" x 1.5"





**Free Throw | 840-00-505**

Round cutting board with basketball design.  
Made of rubberwood. 12.5" diameter x 0.8"

**Sand Trap | 906-00-505**

Golf course-themed cheese board with removable pin,  
three stainless steel cheese tools, and three wine accessories  
in separate swing-out drawers. Made of bamboo. 14.8" x 8.9" x 1.8"





### Caddy | 914-00-505

Golf bag-shaped cheese board with leatherette strap, three stainless steel cheese tools shaped like golf clubs and three wine accessories in a pull-out drawer. Made of rubberwood and bamboo. 8.7" x 13.9" x 1.6"

### 19th Hole | 901-00-505

Putting green-shaped cutting board featuring recessed juice groove and removable 19th pin. Made of rubberwood. 15" x 8" x 0.8"

# Fabio Viviani

## HERITAGE

COLLECTION

*"With a focus on high quality materials and craftsmanship for my product line, I now hope to inspire and assist at-home chefs to create amazing meals, presented in style. Now, let's cook up something fabulous."*

FV.



**Compagno** | 965-00-506

Acacia cutting board/serving tray with recessed divided ceramic dish, 15" x 10.5" x 2"



**Carrara** | 962-00-506

Marble cheese board on acacia base with three full-tang stainless steel tools. (Cocktail picks not included.) 10" x 14" x 2"







**Raccolta (Set of 3) | 969-00-506**

Three nesting acacia pedestals with cast iron griddles.

Also available individually.

LARGE: 969-01-506, 17" x 11" x 5.8"

MEDIUM: 969-02-506, 12.5" x 11" x 4.5"

SMALL: 969-03-506, 11" x 8" x 2.8"



**Bruschetta | 960-00-506**

Reversible acacia cutting board--one side: bread crumb groove, the other side: flat cutting surface. Features 13.4" full-tang bread knife and three ceramic bowls in acacia base. 16.8" x 11.5" x 1.8"



**Tridente | 961-00-506**

Three forged full-tang cheese knives with acacia handles in an acacia box. 11" x 6.3" x 1.5"



**Carovana (Set of 3) | 967-00-506**

Nesting set of three acacia bowls and three glass bowls.

Also available individually.

LARGE: 967-01-506, 2 3/4 Quart

MEDIUM: 967-02-506, 1 1/2 Quart

SMALL: 967-03-506, 1 1/2 Pint



**Mescolare** | 966-00-506

Oversized acacia salad bowl with integrated serving/tossing tools. 13" x 12.5" x 7"



**Margherita** | 968-00-506

Acacia pizza server and cutter with ceramic pizza stone with handles. 14" x 14" x 1.5"







**Prodigio** | 964-00-506

Acacia cookbook stand with tempered glass.  
12" x 10.5" x 1.5"



**Oliera** | 963-00-506

Three vintage-inspired glass cruets with acacia base.  
12.5" x 4.3" x 11"

**PICNIC TIME**<sup>®</sup>

FAMILY OF BRANDS

# COLLECTIONS

---

For decades, the classic red and white “gingham” pattern has been synonymous with picnics and is recognizable across the globe. We embrace this pattern for its romantic and classic picnic feel, and are excited to explore options that will give new meaning and style to the picnic experience.

That’s why we are happy to present eight delightful patterns that have their own fun and modern look and feel.

Whether it’s the sleek nature of the Anthology collection, with its play on every picnic’s less than welcome guests, or the playful print of pinks and greens in our Watermelon collection, we’re sure that you’ll find exactly what you’re looking for in one of our beautiful pattern collections.



WATERMELON 

Harmony 

  
**VIBE**  
COLLECTION

  
WAVES  
COLLECTION

  
ANTHOLOGY  
COLLECTION

Adeline

  
MOKA  
COLLECTION

dahlia 



**CATALINA | 140-10-319**

**NEW**

English-style basket with picnic service for two. Features ceramic plates and mugs. Made of willow with polyester lining. 14" x 11" x 7.5"



**NEW**

**ROMANCE | 322-31-319**

Basket with deluxe service for two. Made of willow with durable polyester canvas lining. 15.8" x 12" x 12"



**BARREL | 223-25-319**

**NEW**

Barrel-shaped basket with deluxe service for two. Made of willow and durable polyester canvas lining. 18.5" x 12" x 17"



**NEW**

**NAPA | 215-19-319**

Basket with wine and cheese service for two. Made of willow with durable polyester canvas lining. 12.5" x 8.5" x 10.5"









# Harmony







**VINO | 122-15-318**

**NEW**

Basket with wine and cheese service for two. Features two exterior wine compartments. Made of willow with durable polyester canvas lining. 14" x 11" x 11.5"



**NEW**

**KABRIO | 325-72-318**

Basket with built-in wooden table top. Has wine and cheese service for two. Made of willow with polyester canvas lining and lid. 14.5" x 10" x 11"



**VERONA | 224-82-318**

**NEW**

Barrel-shaped basket with deluxe wine and cheese service for two. Made of willow and polyester canvas. 18" x 10.5" x 10.5"



**NEW**

**GONDOLA | 225-44-318**

Contemporary picnic basket with service for four and two exterior storage compartments for wine and food. Made of willow with durable polyester canvas lining. 22.5" x 16" x 11"



**VINO | 122-15-320**

Basket with wine and cheese service for two. Features two exterior wine compartments. Made of willow with durable polyester canvas lining. 14" x 11" x 11.5"



**ROMANCE | 322-31-320**

Basket with deluxe service for two. Made of willow with durable polyester canvas lining. 15.8" x 12" x 12"



**VERONA | 224-82-320**

Barrel-shaped basket with deluxe wine and cheese service for two. Made of willow and polyester canvas. 18" x 10.5" x 10.5"



**NAPA | 215-19-320**

Basket with wine and cheese service for two. Made of willow with durable polyester canvas lining. 12.5" x 8.5" x 10.5"





Adeline



dahlia







**CATALINA | 140-10-321**

English-style basket with picnic service for two. Features ceramic plates and mugs.  
Made of willow with polyester lining. 14" x 11" x 7.5"



**KABRIO | 325-72-321**

Basket with built-in wooden table top. Has wine and cheese service for two.  
Made of willow with polyester canvas lining and lid. 14.5" x 10" x 11"



**BARREL | 223-25-321**

Barrel-shaped basket with deluxe service for two.  
Made of willow and durable polyester canvas lining. 18.5" x 12" x 17"







# ANTHOLOGY

COLLECTION







**SONOMA | 616-60-322**

Expandable wine and cheese tote with service for two. Holds three bottles. Made of polyester. 12" x 13.5" x 6"



**POTLUCK | 650-00-322**

Portable insulated casserole tote with two compartments. Has loops on handles to hold serving spoons (not included) and removable identification tag. Made of polyester. 7" x 16.5" x 10.8"



**VISTA BLANKET | 821-00-322**

Washable outdoor blanket that zips into a convenient carry tote. Has an adjustable carry strap and an extra-large pocket on front of tote. Made of polyester. Open: 59" x 51". Closed: 12.8" x 16.5" x 2"





**PRANZO | 512-80-322**

Insulated picnic cooler with service for one. Separate hot and cold compartments. 8-can capacity. Includes napkin, flatware, and salt and pepper shakers. Made of polyester. 12" x 8" x 11"



**KABRIO | 325-72-322**

Basket with built-in wooden table top. Has wine and cheese service for two. Made of willow with polyester canvas lining and lid. 14.5" x 10" x 11"





**MARKET BASKET | 648-00-322**

Lightweight, insulated cooler basket with fully-removable zippered top. Features water-resistant interior with 29-can capacity. Made of polyester with aluminum frame. 19" x 11" x 10" Base: 15"

**HERMOSA | 612-00-322**

Insulated cooler tote with water-resistant liner and front zippered pocket. 24-can capacity. 21" x 8.7" x 13"



**LAGUNA | 503-42-322**

Insulated cooler with deluxe picnic service for two. Has removable water-resistant liner and two-bottle wine section. 12-can capacity. Made of polyester canvas. 14.5" x 10.5" x 9"

**PICCADILLY | 202-19-322**

Double-lid basket with service for two. Includes roll-up flatware pouch. Made of willow with polyester lining. 16.5" x 11" x 9.3"



  
**VIBE**  
COLLECTION





**MARKET BASKET | 648-00-325**

Lightweight, insulated cooler basket with fully-removable zippered top. Features water-resistant interior with 29-can capacity. Made of polyester with aluminum frame. 19" x 11" x 10"



**POTLUCK | 650-00-325**

Portable insulated casserole tote with two compartments. Has loops on handles to hold serving spoons (not included) and removable identification tag. Made of polyester. 7" x 16.5" x 10.8"



**VISTA BLANKET XL | 921-00-325**

Extra-large, washable outdoor blanket that zips into a convenient carry tote. Has an adjustable carry strap and an extra-large pocket on front of tote. Made of polyester. Open: 72" x 60" Zipped: 15" x 19" x 2"



**HERMOSA | 612-00-325**

Insulated cooler tote with water-resistant liner and front zippered pocket. 24-can capacity. 21" x 8.7" x 13"







**VENTURA SEAT | 615-00-325**

Portable folding recliner featuring adjustable backpack-style shoulder straps, six adjustable backrest positions, and integrated armrests. Polyester with steel frame construction. Flat: 20" x 32" x 2"



**UMBRELLA 5.5 | 822-00-325**

Multi-colored sun umbrella with 1.3" diameter pole and tilt feature. Made of polyester. Canopy opens to 6.8' H by 5.5' diameter.



**VISTA BLANKET | 821-00-325**

Washable outdoor blanket that zips into a convenient carry tote. Has an adjustable carry strap and an extra-large pocket on front of tote. Made of polyester. Open: 59" x 51". Closed: 12.8" x 16.5" x 2"





WAVES  
COLLECTION







### VISTA BLANKET | 821-00-324

Washable outdoor blanket that zips into a convenient carry tote. Has an adjustable carry strap and an extra-large pocket on front of tote. Open: 59" x 51" Folded: 12.8" x 16.5" x 2"



### PISMO | 642-00-324

Insulated backpack cooler with water-resistant liner. Features separate sections for food and gear, two exterior beverage pockets and a phone pocket in shoulder strap. Cooler section has a 13-can capacity. Made of polyester canvas. 11" x 7" x 19"



### TRANQUILITY CHAIR | 792-00-324

Portable, folding beach chair with padded armrests and large zippered pocket on back of headrest. Made of 600D polyester with powder-coated steel frame. Weight capacity, 225 lbs. Includes a matching drawstring carrying bag. 20.3" x 15" x 25.8"/27.5"



**BEACHCOMBER | 802-00-324**

Lightweight, portable beach mat. Fully-padded with adjustable reclining backrest.  
Large zippered pocket and adjustable shoulder strap. Polyester with steel frame.  
21.3" x 21.3" x 2.8" Fully unfolded: 63.8"



**MARKET BASKET | 648-00-324**

Lightweight, insulated cooler basket with fully-removable zippered top. Features water-resistant interior with 29-can capacity. Made of polyester with aluminum frame. 19" x 11" x 10"







**PRANZO | 512-80-324**

Insulated picnic cooler with service for one. Separate hot and cold compartments. 8-can capacity. Includes napkin, flatware, and salt and pepper shakers. Made of polyester. 12" x 8" x 11"



**VENTURA SEAT | 615-00-324**

Portable folding recliner featuring adjustable backpack-style shoulder straps, six adjustable backrest positions, and integrated armrests. Polyester with steel frame construction. Flat: 20" x 32" x 2"



**MOKA**  
COLLECTION







**VOLARE | 622-04-777**

Insulated wine and cheese cooler tote. Holds two bottles. Adjustable shoulder strap. Made of polyester canvas. 9.5" x 4.5" x 14"



**KABRIO | 325-72-777**

Basket with built-in wooden table top. Has wine and cheese service for two. Made of willow with polyester canvas lining and lid. 14.5" x 10" x 11"



**METRO BASKET | 645-00-777**

Lightweight insulated cooler basket. Features water-resistant interior and expandable drawstring top. 26-can capacity. Polyester canvas with aluminum frame. 19" x 11" x 10" Base: 15"



**YELLOWSTONE | 216-76-777**

Basket with deluxe picnic service for two. Features canvas shoulder strap and sturdy carrying handle. Made of willow with polyester canvas lining. 15" x 10" x 13"



**MALIBU | 504-42-777**

Insulated cooler with deluxe picnic service for two. Has removable water-resistant liner and two-bottle wine section. 12-can capacity. Made of polyester canvas. 14.5" x 10.5" x 9"

**TURISMO | 641-00-777**

Insulated day-trip backpack cooler with multiple pockets. 20-can capacity. Features insulated water duffel and large utility clip. Made of polyester canvas. 16" x 5" x 19"





**SPORTS CHAIR | 809-00-777**

Folding chair with fold-out side table, side pockets, and insulated drink holders. Features 19.5" wide seat and detachable shoulder strap. Made of aluminum and polyester canvas. Weight capacity, 300 lbs. Chair: 19.5" x 13.5" x 7.5"/32" Table: 11" x 14.5"



**BAROSSA | 522-49-777**

Insulated single-bottle wine tote/cooler with service for two. Features adjustable shoulder strap. Made of polyester canvas. 7.5" x 3.8" x 13.5"



**BLANKET TOTE | 820-00-777**

Outdoor picnic blanket with shoulder strap and zippered pocket in flap. Made of polyester fleece with water-resistant underside. Open: 59" x 51" Folded: 13" x 8" x 3"



**BLANKET TOTE XL | 920-00-777**

Extra large outdoor picnic blanket with zippered pocket in flap and shoulder strap. Made of polyester fleece with water-resistant underside. Open: 70" x 80" Folded: 18" x 11" x 5"