

**TITLE: Pelican Protector™ Case Mobility Wheel Material Change**

**PRODUCT AFFECTED: All Pelican Protector™ Cases with wheels – 1440, 1510, 1560, 1610, 1620, 1630, 1640, 1650, 1660, 1690, 1700, 1720, 1750, 1780**

**INTRODUCTION: Nylon hubs have been added to all wheels on Pelican Protector™ Cases.**

**DETAILS:**

**Nylon hubs (which connect the polyurethane wheel to the ball bearings) were chosen for their extreme heat and impact resistance.**



**Medium Case Wheel (1440 – 1560)**



**Large Case Wheel (1610 – 1780)**

Date: March 24, 2010

TITLE: Pelican™ Case Handles Equipped With Black Overmolding

PRODUCTS AFFECTED: 1500, 1520, 1610, 1620 Pelican Cases – Additional Case models will follow.

DETAILS: To unify the look of all Pelican Cases, handles in the line engineered with overmolding will now feature black rubber instead of the previous grey.



Previous Grey Overmolded Handle



New Black Overmolded Handle



## 1620 Protector

Sensitive equipment needs protection, and since 1976 the answer has been the Pelican™ Protector Case. These cases are designed rugged, and travel the harshest environments on earth. Against the extreme cold of the arctic or the heat of battle, Pelican cases have survived.

Made in the USA, these tough cases are designed with an automatic purge valve, that equalizes air pressure, a watertight silicone O-ring lid, over-molded rubber handles and stainless steel hardware.

- Personalized nameplate service available
- **Strong polyurethane wheels with stainless steel bearings**
- **Watertight, crushproof, and dustproof**
- 4 level Pick N Pluck™ with convoluted lid foam
- Automatic Pressure Equalization Valve - balances interior pressure, keeps water out
- Easy open Double Throw latches
- Fold down handles
- O-ring seal
- Open cell core with solid wall design - strong, light weight
- Retractable extension handle
- Stainless steel hardware and padlock protectors



### CONFIGURATIONS



**1620**  
Standard



**1624**  
With Padded Dividers



**1620NF**  
No Foam



**1620WF**  
With Foam

### DIMENSIONS

<b>Interior (LxWxD)</b>	21.48 x 16.42" x 12.54 (54.6 x 41.7 x 31.9 cm)
<b>Exterior (LxWxD)</b>	24.76 x 19.57" x 13.90 (62.9 x 49.7 x 35.3 cm)
<b>Lid Depth</b>	2.01" (5.1 cm)
<b>Bottom Depth</b>	10.53" (26.7 cm)
<b>Total Depth</b>	12.54" (31.9 cm)
<b>Int Volume</b>	2.56 ft <sup>3</sup> (0.072 m <sup>3</sup> )
<b>Padlock Hole Diameter</b>	5/16" (8 mm)

### MATERIALS

<b>Body</b>	Polypropylene
<b>Latch</b>	ABS
<b>O-Ring</b>	Polymer
<b>Pins</b>	Stainless Steel
<b>Foam</b>	1.3 lb Polyurethane

<b>Purge Body</b>	ABS
<b>Purge Vent</b>	3 Micron Hydrophobic Non-Woven

## COLORS

 Black	 Desert Tan	 OD Green
---	--	--

## WEIGHT

<b>Weight With Foam</b>	24.62 lbs (11.2 kg)
<b>Weight Empty</b>	21.20 lbs (9.6 kg)
<b>Buoyancy</b>	149.91 lbs (68 kg)
<b>Master Pack Weight</b>	26.90 lbs (12.2 kg)

## TEMPERATURE

<b>Minimum Temperature</b>	-40°F (-40 °C)
<b>Maximum Temperature</b>	210°F (98.9 °C)

## CERTIFICATIONS

**IP67**  
**MIL C-4150J**  
**Def Stan 81-41**  
**STANAG 4280**

## FOAM PROPERTIES

<b>Layer 1 (Lid)</b>	1.00" Convolute
<b>Layer 2 (Base)</b>	1.00" Pad
<b>Layer 3 (Base)</b>	2.38" Pick N Pluck
<b>Layer 4 (Base)</b>	2.38" Pick N Pluck
<b>Layer 5 (Base)</b>	2.38" Pick N Pluck
<b>Layer 6 (Base)</b>	2.38" Pick N Pluck

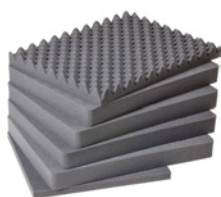
## OTHER

<b>Wheels</b>	2
<b>Extendable Handle</b>	yes
<b>Master Pack</b>	1
<b>Nameplate</b>	yes
<b>Military</b>	yes

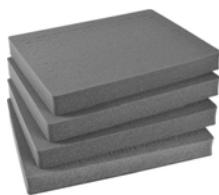
## ACCESSORIES



**1609**  
Lid Organizer



**1621**  
6 pc. Replacement Foam Set



**1622**  
Pick N Pluck™ Sections Only  
(set of 4)



**1623**  
Replacement O-ring



**1625**  
Padded Divider Set



**1507**  
Quick Mounts - set of 4



**1506TSA**  
TSA Lock



**1500D**  
Desiccant Silica Gel



**PL2**  
Padlock (2 pack)

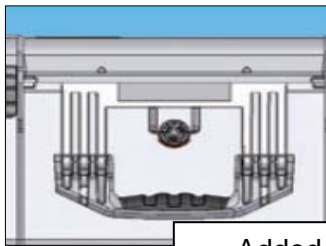
---

**TITLE:** Pelican 1620 Transport Case Design Refinements

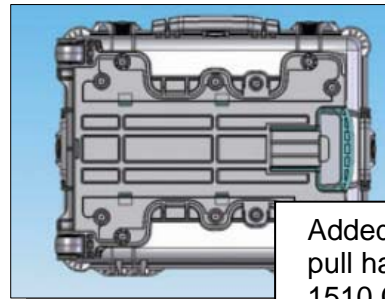
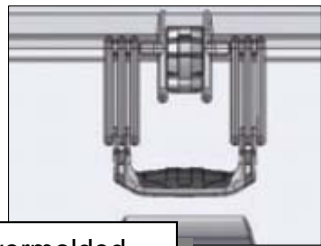
**PRODUCTS AFFECTED:** Pelican's 1620 Transport Case

**INTRODUCTION:** The 1620 Transport Case design has been modified (**Excluding models manufactured in Germany**).

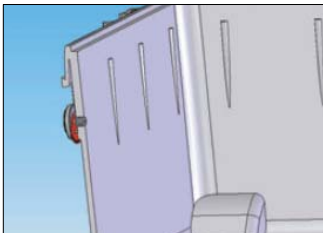
## Design refinements:



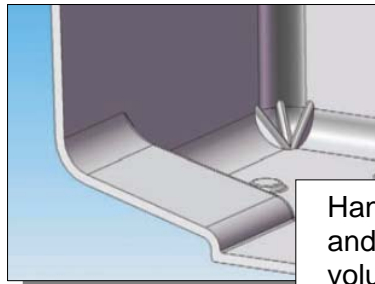
Added overmolded front and side handles



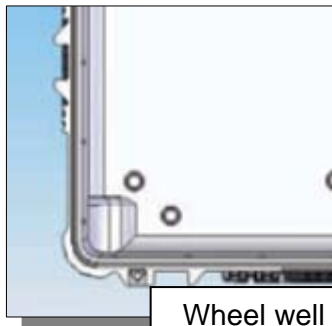
Added one-handed-action pull handle dolly (Similar to 1510 Carry On and 1560)



Inside wall thickness removed behind purge valve area to increase internal volume



Handle recess area deepened and narrowed – less internal volume



Wheel well ribs and interior flow channels removed to increase internal capacity

