

Dual-Light™ Headlamp

w/ Hard Hat Clip and Mount

180 Lumens
Dual-Light™

100/60 Lumens
Spotlight

90/50 Lumens
Floodlight

Spot High Spot Low Flood High



Flood Low

Dual



This 3 AAA Dual-Light™ Headlamp w/Hard Hat Clip & Mount features a multi-position tilt head design and includes an integrated Stainless Clip and adhesive hard hat mounting bracket for hands-free operation. Utilizing Bayco's exclusive Dual-Light design, this headlamp combines a tight-beam long-throw spotlight, with a wide-beam close area floodlight. Rated at 100 & 60 lumens respectively, the high and low-brightness spotlight beams on this headlamp are designed for distance illumination. This headlamp also has two wide-beam floodlight settings rated at 90 & 50 lumens. The floodlight spreads out in a wide even pattern of light expressly for the purpose of providing illumination of areas that are close by. Additionally any combination of spotlight & floodlight settings can be selected simultaneously for even greater functionality. The top mounted dual switches provide high/low-brightness spotlight and high/low-brightness floodlight.



(Hard Hat not included)



TECHNOLOGY

- 180 Lumens in Dual-Light™ mode
- Integrated Stainless Steel Clip attaches to hard hat mounting bracket (included)
- 5 lighting modes: high/low-brightness spotlight, high/low-brightness floodlight & Dual-Light™
- IP-X7 rated waterproof
- Powered by 3 AAA batteries (included)

NSP 4608BC

Dual-Light™ Headlamp w/ Hard Hat Clip and Mount



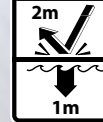
FEATURES

- CREE® LED technology – 50,000+ hours LED life
- 5 modes: high/low spotlight, high/low floodlight & Dual-Light™
- Integrated Stainless Steel Clip attaches to hard hat mounting bracket (included)
- Focused spotlight beam for distance illumination
- Unfocused wide-beam floodlight for close-up illumination
- Dual-light (any spotlight & floodlight mode at same time) for maximum versatility
- Engineered polymer housing
- Dual switches located on top of light
- Adjustable ratchet tilt head
- Waterproof
- Impact & chemical resistant
- Powered by 3 AAA batteries (included)
- Limited Lifetime Warranty

SPECIFICATIONS

- Lumens: high spotlight-100, low spotlight-60, high floodlight-90, low floodlight-50, dual-light-180
- Run-time: high spotlight-5 hrs, low spotlight-13.5 hrs, high floodlight-4.25 hrs, low floodlight-13.75 hrs, dual-light-2.5 hrs
- Beam distance: High 77m low: 55m
- Water rating: IP-X7
- Drop rating: 2 meters
- Length: 2.1in, Width: 2.6in, depth: 1.8in, weight: 3.4oz

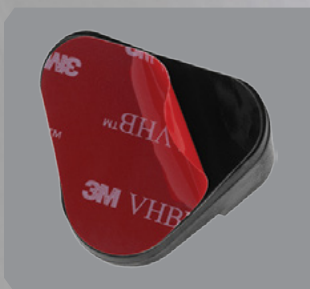
FL. STANDARD	DUAL-LIGHT	HIGH	LOW
	180 LUMENS	100 LUMENS	60 LUMENS
	2h 30min	5h	13h
	82m	77m	55m
	1384cd	1506cd	775cd



INCLUDED

- Headlamp w/ Hard Hat Clip
- 3 premium AAA alkaline batteries

Model	UPC 0 17398
NSP-4608BC	80487 5



Industrial strength PSA backing



Fits most hard hats



Integrated stainless steel clip



Tool-less secure pressure fit mounting





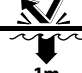
NSP-4608BC

Dual-Light™ Headlamp w/ Hard Hat Clip and Mount

MARKET APPLICATIONS	Law enforcement, search & rescue, aviation, industrial, automotive and hunting & recreation
DESCRIPTION	This 3 AAA Dual-Light™ Headlamp w/Hard Hat Clip & Mount features a multi-position tilt head design and includes an integrated Stainless Clip and adhesive hard hat mounting bracket for hands-free operation. Utilizing Bayco's exclusive Dual-Light design, this headlamp combines a tight-beam long-throw spotlight, with a wide-beam close area floodlight. Rated at 100 & 60 lumens respectively, the high and low-brightness spotlight beams on this headlamp are designed for distance illumination. This headlamp also has two wide-beam floodlight settings rated at 90 & 50 lumens. The floodlight spreads out in a wide even pattern of light expressly for the purpose of providing illumination of areas that are close by. Additionally any combination of spotlight & floodlight settings can be selected simultaneously for even greater functionality. The top mounted dual switches provide high/low-brightness spotlight and high/low-brightness floodlight.
CASE MATERIAL	Engineered Polymer
DIMENSIONS	Width: 2.6 inches (66 mm) • Height: 2.1 inches (53 mm) • Depth: 1.8 inches (46 mm)
WEIGHT	Weight: 3.3 oz. (94 g) with batteries installed
LENS	Unbreakable polycarbonate with scratch resistant coating
LIGHT SOURCE	CREE® LEDs Impervious to shock with a 50,000 + hour lifetime
LIGHT OUTPUT	High-Brightness Spotlight: 100 lumens • Low-Brightness Spotlight: 60 lumens • High-Brightness Floodlight: 90 lumens • Low-Brightness Floodlight: 50 lumens • Dual-Light: 180 lumens
ON/OFF	Dual Switches. High/Low Spotlight, High/Low Floodlight, Dual-Light
RUN-TIME	High-Brightness Spotlight: 5 hours • Low-Brightness Spotlight: 13.5 hours • High-Brightness Floodlight: 4.25 hours • Low-Brightness Floodlight: 13.75 hours • Dual-Light: 2.5 hours
BATTERY	3 Premium AAA batteries (included)
FEATURES	<ul style="list-style-type: none"> • CREE® LED technology – 50,000 + hours LED life • 5 modes: high/low spotlight, high/low floodlight & Dual-Light™ • Integrated Stainless Steel Clip attaches to hard hat mounting bracket (included) • Focused spotlight beam for distance illumination • Unfocused wide-beam floodlight for close-up illumination • Dual-light (any spotlight & floodlight mode at same time) for maximum versatility • Engineered polymer housing • Dual switches located on top of light • Adjustable ratchet tilt head • Waterproof • Impact & chemical resistant • Powered by 3 AAA batteries (included)
WARRANTY	Limited Lifetime Warranty • Includes the LEDs, housing and lenses. Rechargeable batteries, chargers, switches, electronics and included accessories are warranted for a period of two years with proof of purchase. Disposable, non-rechargeable batteries are excluded from this warranty. Normal wear and failures which are caused by accidents, misuse, abuse, faulty installation and lightning damage are also excluded.

APPROVALS



FL STANDARD	DUAL-LIGHT	HIGH	LOW
	180 LUMENS	100 LUMENS	60 LUMENS
	2h 30min	5h	13h
	77m	77m	55m
	1506cd	1506cd	775cd
	2m		1m

