

***Model 40330***  
***Replacing the Batteries or the***  
***Battery Pack***



Whether you have one of our newer models with 12 LEDs and just need to replace the batteries, or you have an older model with 6 LEDs and need to replace the battery pack, these instructions will guide you, step-by-step, through the process.





Remove the circled screws from the nuts.



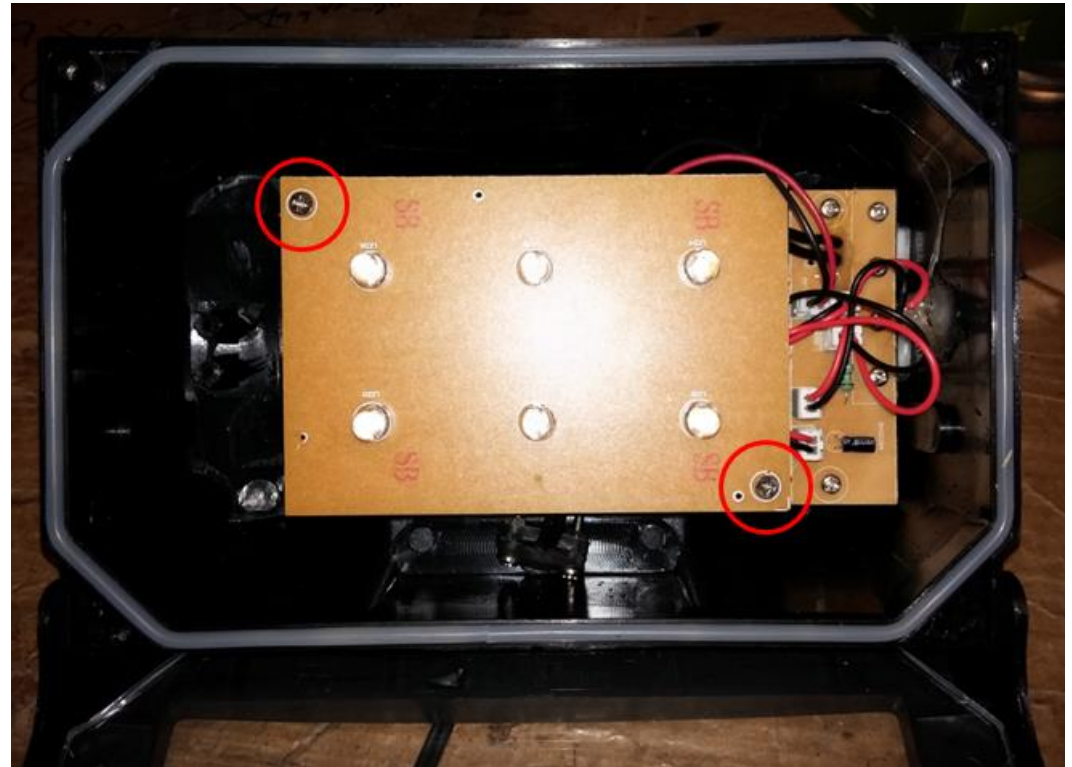
Loosen the screws on the side of the faceplate. There is one screw on each side.

Once the front screws have been removed and the side screws have been loosened, rotate the faceplate forward and down, exposing the reflecting tray.



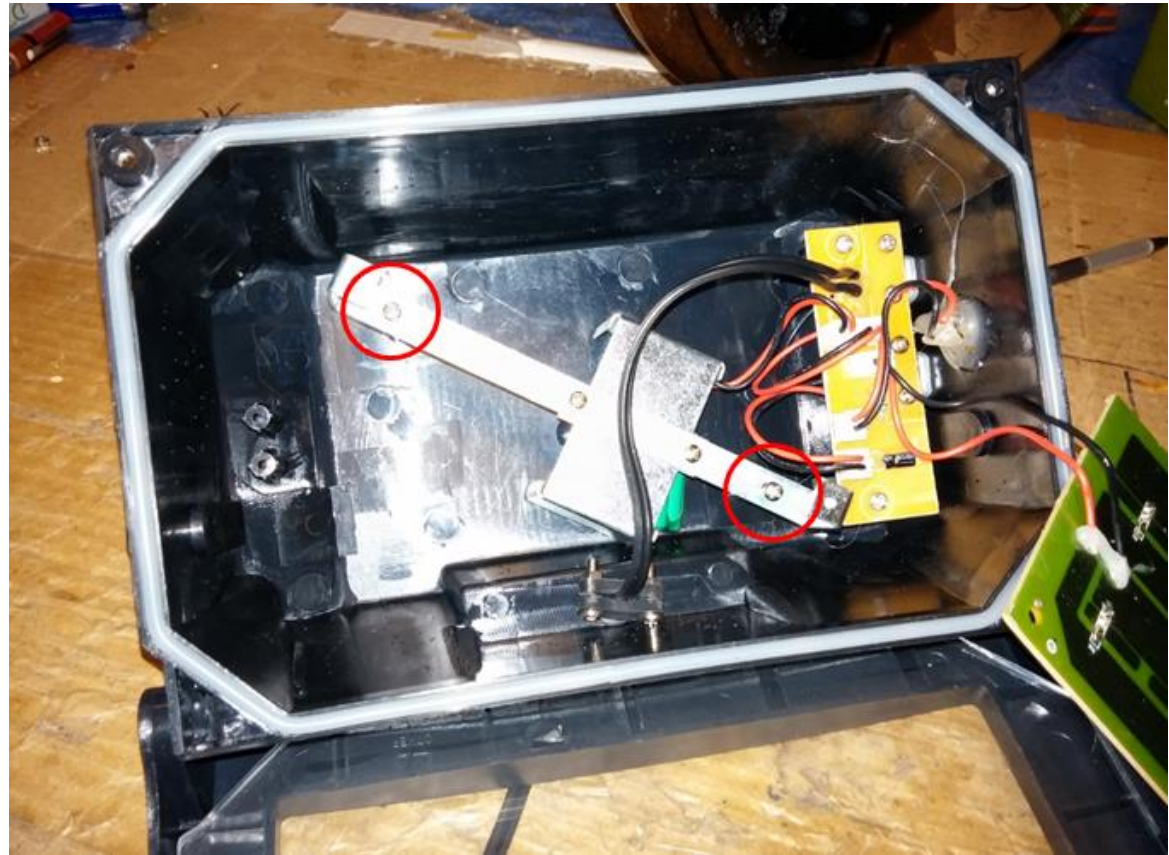
Pull the reflective plate out of the light. It should lift right out and expose the LED board. You will see two screws holding the LED board in place (circled in red). Remove them.

Keep track of the bolts. You will need to switch one with one of the bolts later on.



Pull the LED board out. Be careful not to sever the wires connecting the LED board to the control board still within the body.

Once removed, you will see the stand-off bracket. Remove the outermost screws of the stand-off bracket, circled in red.



After removing the screws, remove the bracket. This will expose the battery pack. You will see the battery pack is plugged into the control board.

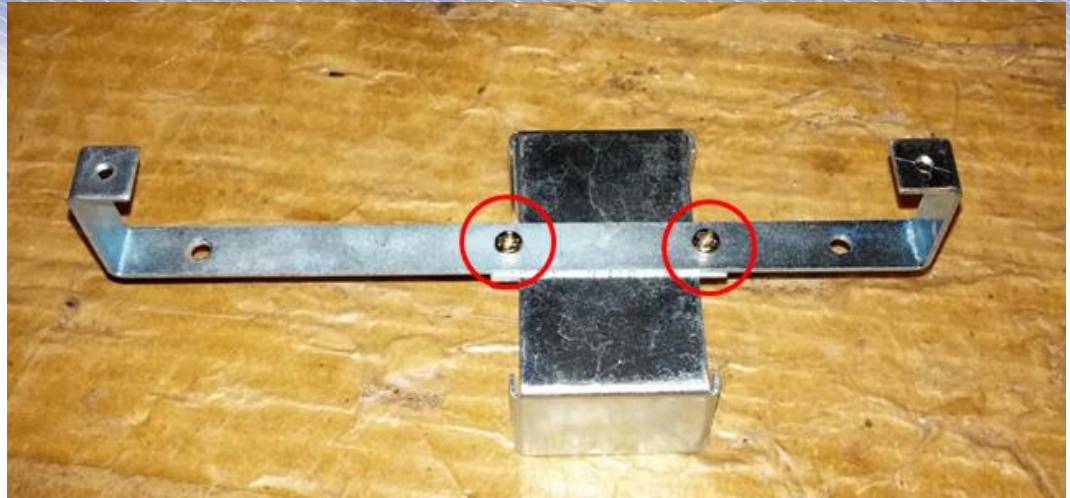


Unplug the battery pack and take it out of the light

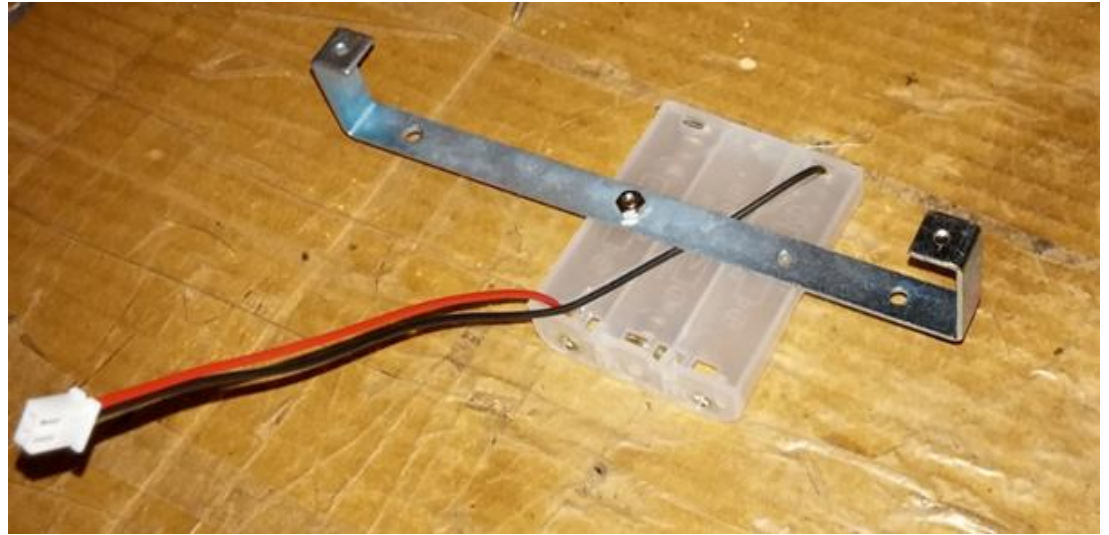




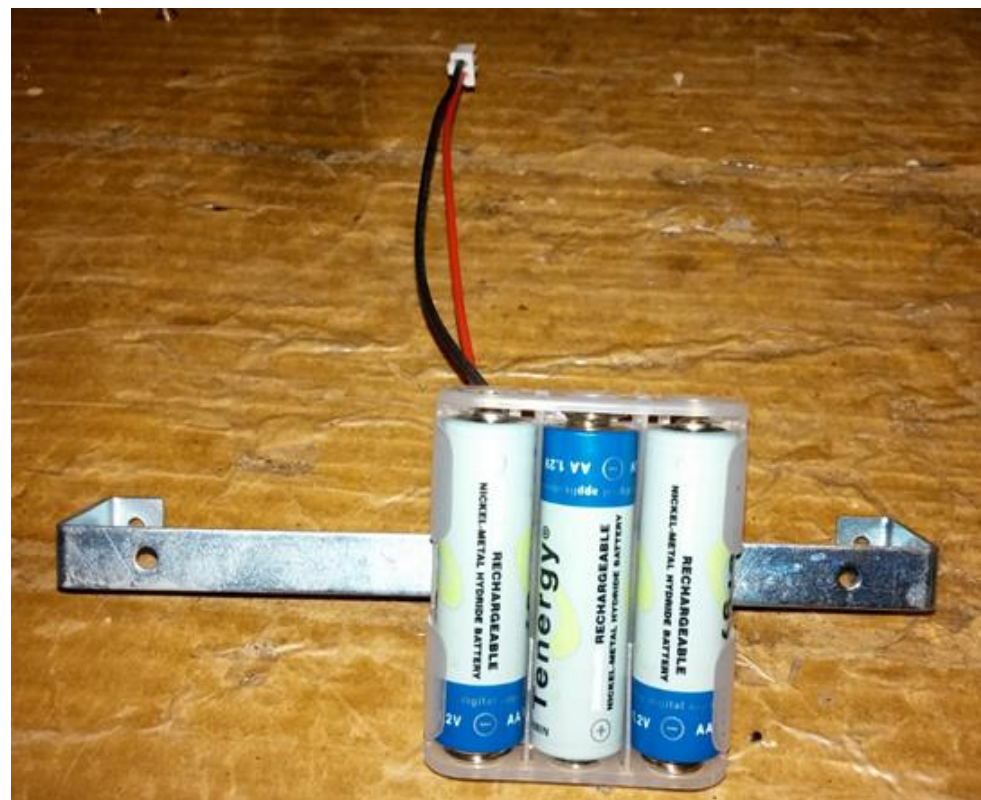
Go to the bracket removed in Step 5. There are two nuts and bolts holding the battery pack cover to the bracket. Remove them so the cover is no longer attached to the bracket.



Use the bolt set aside from Step 3. Place it through the battery tray, then through the bracket. Put a nut on the end of it and tighten it. Note the orientation of the pieces, be sure yours matches. The holes in the bracket do not exactly match up to the holes in the battery tray. You only need to secure one hole, as shown in the picture.

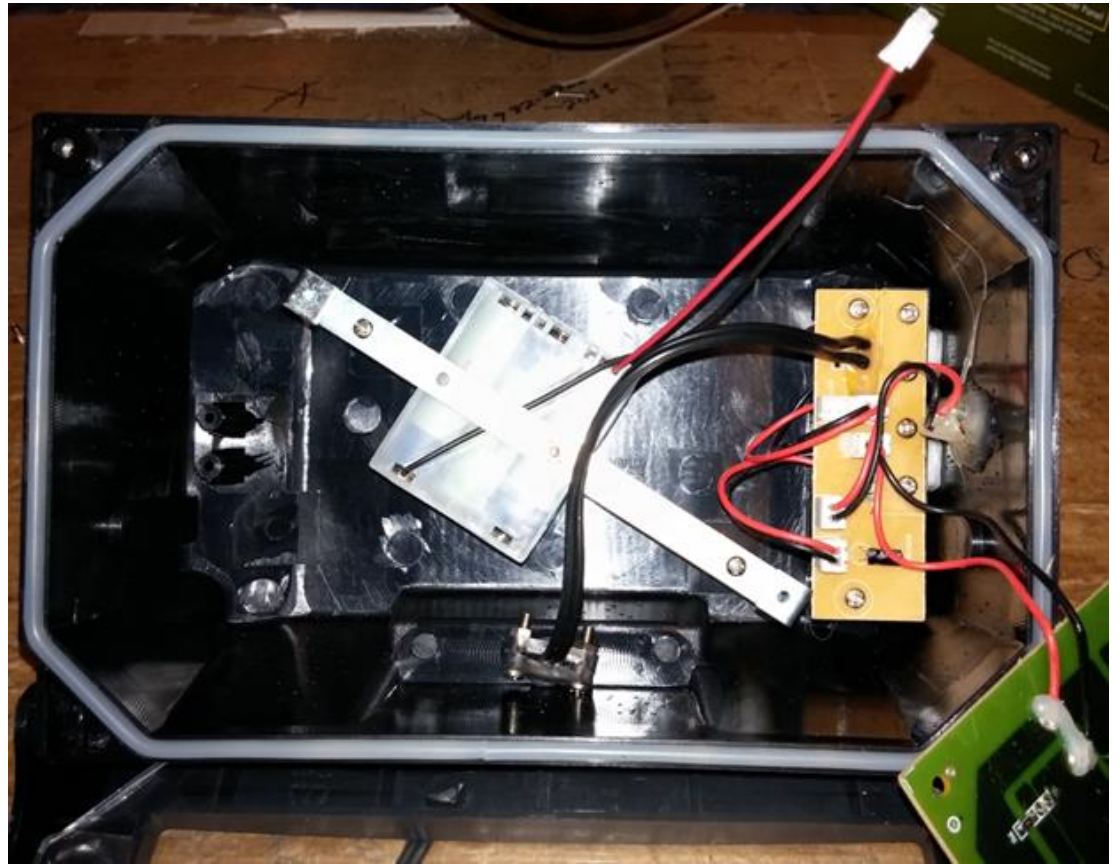


Insert 3 rechargeable AA batteries into the battery tray.



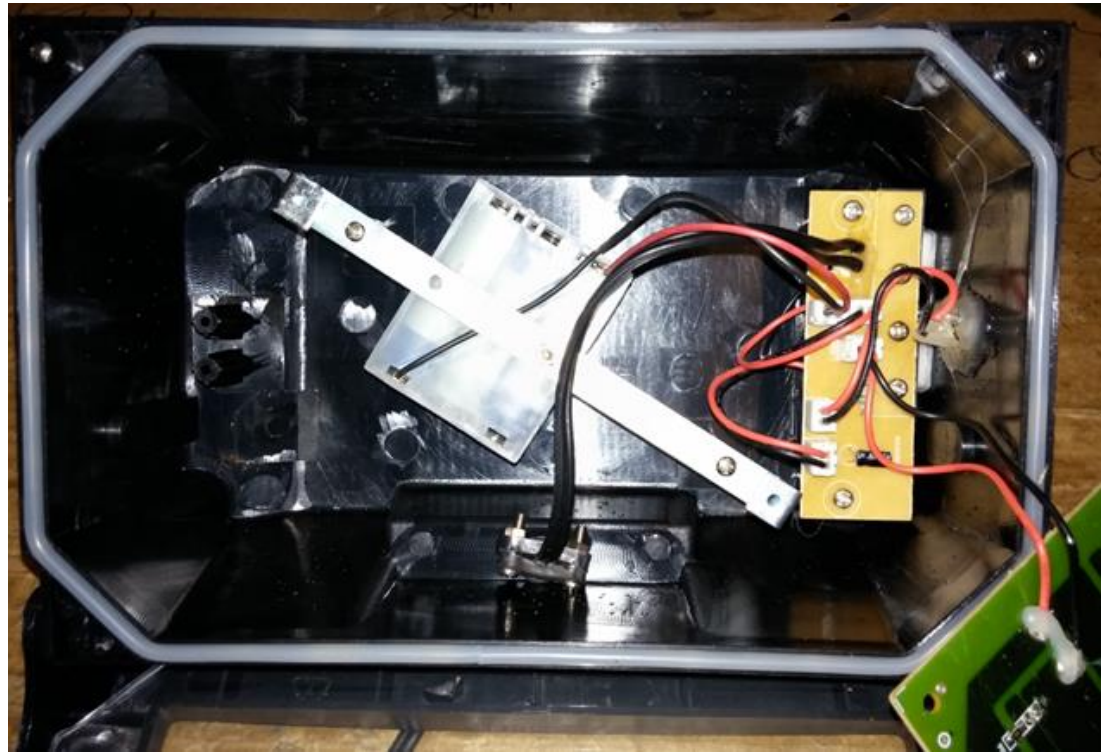
Place the bracket back into the body of the light. Be sure the plug from the battery tray is on the same side as the control circuit board.

Use the two screws previously removed to attach the bracket back to the stand-offs in the body.

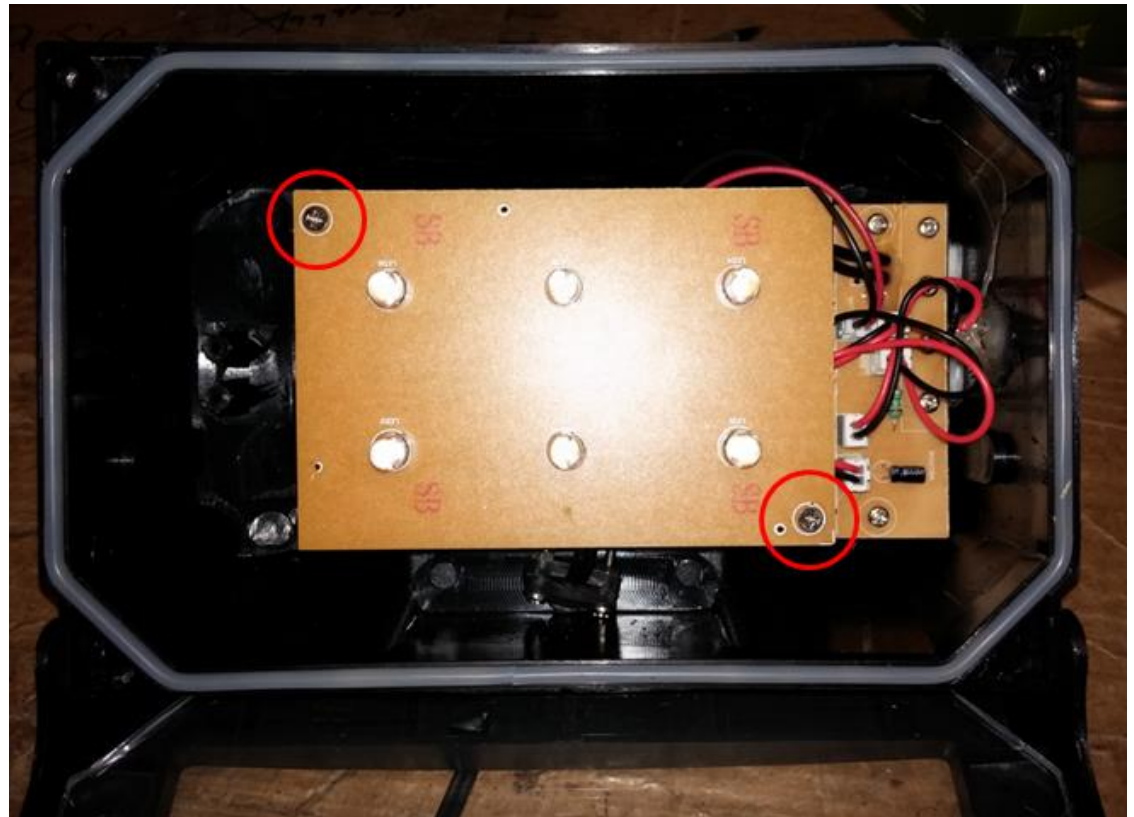


Take the plug from the battery tray and plug it into the same socket on the control board where the original battery pack was attached. Be sure the orientation is correct or it will not fit.

Once plugged in, press the ON/OFF button on the outside of the light. If you installed it correctly, the LEDs should activate.



Put the LED Board back in place on the bracket. Use the remaining bolt from when you first removed it, and one the remaining bolt from Step 7 when you removed the battery cover from the bracket.



Place the reflective plate back over the LED board. Rotate the face of the light upwards so it closes. Insert and tighten the screws on the front. Then tighten the screws on the sides of the faceplate.



***Model 40330  
Attach the Solar Panel  
to the Light***



Our latest version of the Solar Flood Light (Model 40330) has 2 bolts installed in the body of the light to allow you to mount the solar panel directly to the light. This is very convenient if you plan to mount the light to a pole or just want to keep the pieces together.

These instructions will guide you, step-by-step, through the process of mounting the solar panel directly to the light.



You will need a pair of needle-nose pliers to complete this installation.

Locate the nuts and bolts sticking out of the underside of the light.

Loosen the nut on one side, but do not remove it yet. Once you have loosened the nut, grab the bolt with the pliers to prevent it from sliding into the interior of the body of the light.

Now fully remove the nut from the bolt. Be sure to maintain your grip on the bolt with the needlenose pliers.



While still holding the bolt with the needle-nose pliers, place one hole of the solar panel over the bolt. The small size of the needle-nose pliers should allow clearance to do this. Continue to maintain your grip on the bolt with the needle-nose pliers.



Place the nut back on the bolt and twist it a few times to ensure it is in place, but do not tighten it at this time. You can now let go of the bolt with the needle-nose pliers. It is necessary for the nut to be a little loose so you are able to place the other side of the solar panel.



Repeat steps 1 through 3 for the other nut and bolt. You should now have the solar panel attached to the main light.



Now that your solar panel is in place, you can tighten the nuts so the solar panel is snug against the light.

You may find it useful to use the needle-nose pliers to turn the nuts.

Once the solar panel is firmly in place, you can mount your light.

