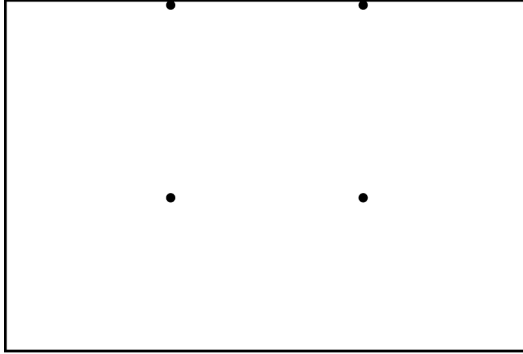


# Measuring A Round Rail

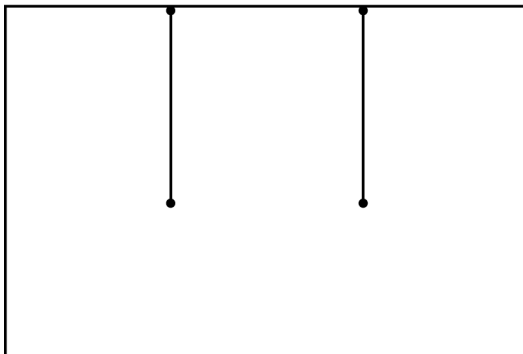
STEP 1



**Step 1**

Using a ruler on heavy paper, card stock or the bottom of an envelope, accurately measure and mark parallel dots to the size of rail you think you have as shown. If you think you have 1.0 inch railing, mark the dots exactly 1.0 inch apart.

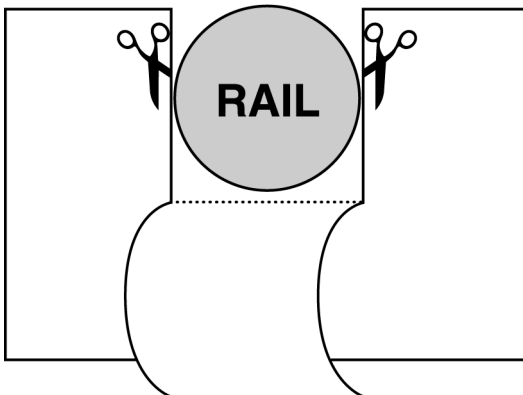
STEP 2



**Step 2**

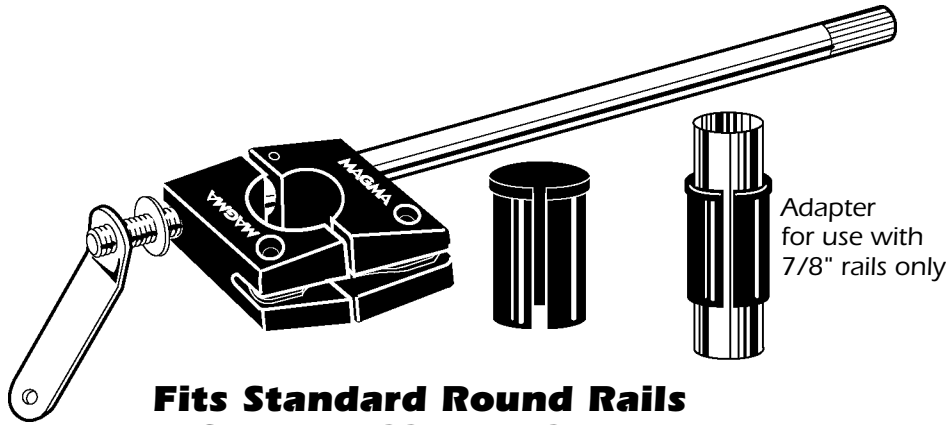
Using a ruler, accurately draw lines between the dots as shown.

STEP 3



**Step 3**

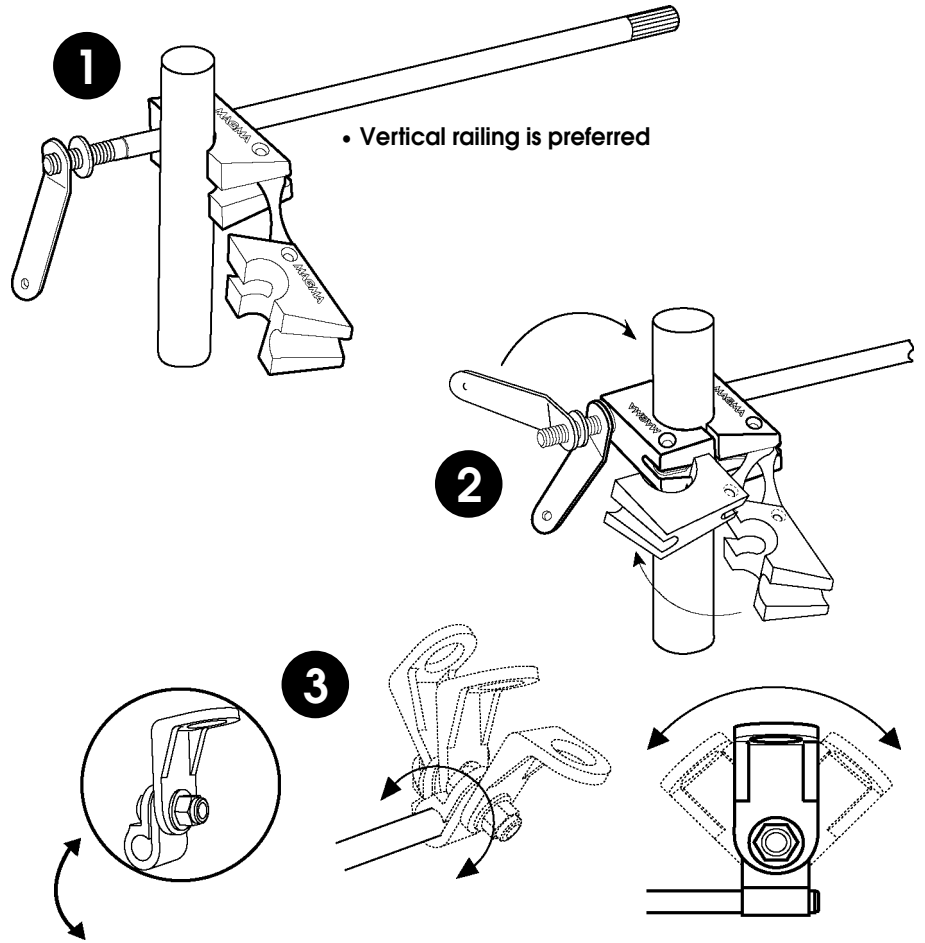
With a razor or scissors, carefully cut along the lines, fold back the cut area and insert on your railing. If the fit is incorrect, repeat from step 1, adjusting either up or down until you get the correct rail size.



**Fits Standard Round Rails  
7/8" or 1" (22mm or 25.5mm)**

The round rail, quick-disconnect, all angle mounting bracket is made entirely of 18-8 stainless steel and 356 anodized aluminum to endure the most severe marine environment. Fits any angle railing and detaches quickly for storage without tools, leaving no hardware on the rail.

**INSTRUCTIONS**



• Vertical railing is preferred

• Level adjuster included with grill. See grill owners manual for installation.