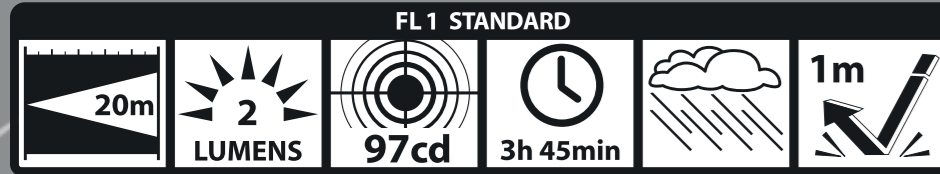


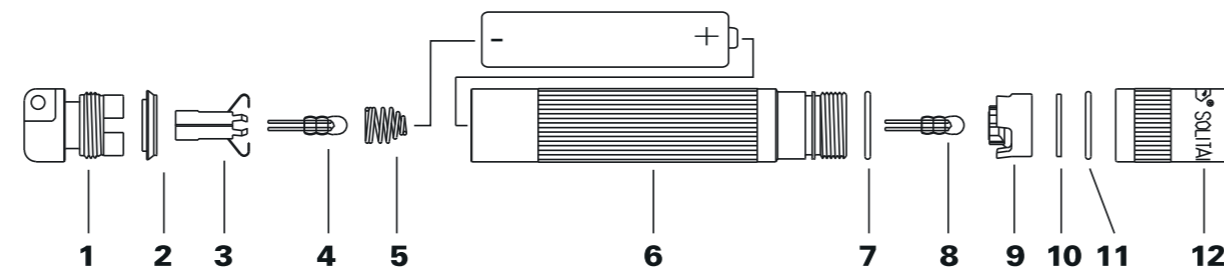
MAG-LITE[®] SOLITAIRE[®]



BEAM DISTANCE™
20 METERS

1-CELL AAA

MAG-LITE[®] SOLITAIRE[®] Single Cell AAA Flashlight



- | | | | |
|----------------------|-------------------|------------------|-----------------|
| 1 Tail cap | 4 Spare lamp | 7 O-ring, barrel | 10 Clear lens |
| 2 Lip Seal, tail cap | 5 Battery spring* | 8 Lamp | 11 O-ring, head |
| 3 Electrical contact | 6 Barrel | 9 Reflector | 12 Head |

*Item 5 inserts into item 1

Thank you for purchasing a Mag-Lite[®] Solitaire[®] flashlight.

OPERATION: Large end of battery spring must be snapped into tail cap. Always install batteries with the "+" end facing the head end of the flashlight and the "-" end facing the tail cap end of the flashlight. **Switch -** Twist head. **Flood To Spot -** Rotate head of flashlight to adjust from a wide flood beam to an intense spotlight. Reverse to shut off. **Candle Mode -** Unscrew head of flashlight to expose lamp. Stand flashlight on tail cap end to create a candle effect. **Changing The Lamp -** Unscrew the entire head assembly and gently pull lamp from socket. Make sure new lamp pins are straight; insert into socket. There is a spare lamp in tail cap.

INSPECTION AND MAINTENANCE: For prolonged life and efficiency, it is necessary periodically to inspect and perform preventative maintenance on your flashlight as follows: **1. Inspection -** Any battery may leak caustic solutions or gases which can corrode the inside of your flashlight. You should remove the batteries at least once a month and visually inspect the inside of the flashlight for signs of corrosion. If corrosion is seen, follow the instructions in the HOW AND WHEN TO MAKE A WARRANTY CLAIM section. **2. Separate Storage of Batteries -** If your flashlight is used infrequently, e.g., once a month or less, it is recommended to remove the batteries and store them separately. This helps guard against corrosion and may also prolong battery life. **3. Maintenance -** Place a small amount of petroleum jelly on all threads and rubber O-rings every six months.

TROUBLESHOOTING: 1. Flashlight failure - Check the lamp and the batteries. If the lamp has burned out, be sure its replacement was designed specifically for the battery voltage output. **2. Flashlight does not turn on or stay on -** Check the tail cap. The metal surfaces contacting the barrel, tail cap and spring assembly should be shiny metal without obstruction between them. Any corrosion formed by a foreign substance should be carefully removed.

WARNINGS: Any battery may leak harmful chemicals which may damage skin, clothing, or the inside of the flashlight. TO AVOID RISK OF INJURY, DO NOT LET ANY MATERIAL LEAKED FROM A BATTERY COME IN CONTACT WITH EYES OR SKIN. Any battery may rupture or explode if put in a fire or otherwise exposed to excessive heat. TO AVOID RISK OF INJURY, DO NOT EXPOSE BATTERIES TO EXCESSIVE HEAT. To reduce the risk of personal injury or harm to your flashlight, take the following precautions: • **Use only alkaline batteries from a reputable manufacturer.** • Do not use different brands of batteries in the same flashlight. • When replacing batteries, always replace the whole set. • **Do not use rechargeable or reuseable alkaline batteries.** • Do not try to recharge batteries that are not specifically designed to be recharged. • Always install batteries with the "+" end facing the head end of the flashlight and the "-" end facing the tailcap end of the flashlight. • **Do not allow children to install batteries unsupervised.** • Follow battery manufacturer's instructions as to proper handling, storage and disposal of batteries. • Use of a replacement lamp of improper dimensions or specifications may cause shorting, overheating or other hazard. Use only the recommended Mag-Lite[®] replacement lamp or its technical equivalent. • Carefully follow the steps listed under INSPECTION AND MAINTENANCE. • Do not allow children to install or tamper with the lamp. Protect the lamp from bending or twisting. If the lamp is installed improperly or if the leads from the lamp are twisted so as to contact one another, this could short circuit the flashlight and cause heat generation. • Not recommended for use by children under seven years of age.

Single Cell AAA Flashlight



Model Number: **K3A036** Part Number: **120-000-809**

FEATURES

- Durable Aluminum Alloy Case
- Limited Lifetime Warranty
- Detailed warranty and operating instructions are enclosed.
- Light Beam is Adjustable from a Wide Flood to an Intense Spot (1)
- Includes a Spare Bulb in the Tail Cap (2)
- Innovative extended key lead allows the light beam and keys to be used together in the same direction. (3)
- Includes one AAA cell premium alkaline battery



423-000-841 6/13

RED