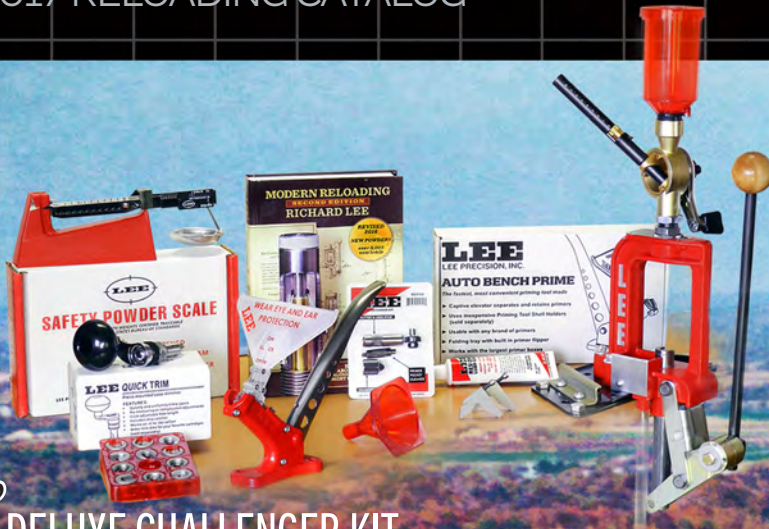


# LEE

LEE PRECISION, INC.

# THE BEST VALUE IN AMERICAN MADE RELOADING TOOLS



**New**

**DELUXE CHALLENGER KIT** PG 19



**New**

**DELUXE PERFECT POWDER MEASURE**  
PG 31



**AUTO BENCH PRIME**  
PG 26

4	Reloading Stand   Bench Plate
5	Modern Reloading II
6-7	Pistol Die Selection
8	Bulge Buster Carbide Factory Crimp Die
9	Pistol Crimp Dies
10	Pistol Dies Size Chart
11	Rifle Dies
12-13	Rifle Dies
14-15	Rifle Dies Size Chart
16-17	Reloading Press Overview
18	Breech Lock Reloader   Breech Lock Hand Press & Kit   Classic Lee Loader   Ram Prime
19	Breech Lock Challenger Press & Kits
20	Breech Lock Classic Cast
21	Classic Cast Press 50 BMG Press Kit
22	Classic Turret Press Classic Turret Press Kit
23	Value Turret Press Value Turret Press Kit
24	Pro 1000
25	Load-Master
26	Auto Bench Prime
27	New Auto-Prime   Ergo-Prime Priming Tool Shell Holders
28	Case Conditioning & Trimming Tools
29	Quick Trim
30	Bulge Buster Kit   Shell Holders
31	Deluxe Perfect Powder Measure Perfect Powder Measure Safety Scale   Powder Funnel Powder Measure Kit
32-33	Powder Measure Equipment
34	Electric Melters
35	Lubrication and Sizing
36	Rifle Bullet Molds
37	Pistol Bullet Molds
38	Black Powder Bullet Molds
39	Slug Molds   Buckshot Molds   Load-All II

# Thanks for your interest in reloading

IF YOU HAVE NEVER RELOADED BEFORE, you're in for a treat. While some would have you believe it is rocket science, nothing could be further from the truth. If you can replace a light bulb (screw in a die), measure with a teaspoon (dip a powder charge), shove a cork into a bottle (seat a bullet) and can read and comprehend this description (read instructions), then you're all set.



## HANDGUN

### SIZE

**REMOVING spent primer and RESIZING case can be accomplished by using any reloading press**

**HANDGUN**

Pistol Sizing Die

Breech Lock Challenger Press pg 19

### PRIME

**INSTALL PRIMER Can be done on press or by hand**

On press: Prime with Lever Prime System pg 19

### TRIM

**FULL LENGTH SIZE OR COLLET NECK SIZE**

**RIFLE**

**NOTICE** how the case neck is sized as case is withdrawn from the die over the expander

Rifle Full Length Sizing Die  
LUBRICATE an inspected, clean case.

Rifle Collet Necksizing Die  
No lube required. Cases must be fired through your gun only.

**FOR SAFETY SAKE CHECK CASES** for proper trim length. Chamfer inside case neck to allow easy bullet installation.

Case Conditioning Kit pg 28

Deluxe Quick Trim, trim and chamfer simultaneously pg 29

**WEAR EYE AND EAR PROTECTION**

Hand Prime with New Auto-Prime pg 27

Priming with Lee Auto-Bench Prime pg 26

## RIFLE RELOADING

**R**ELOADING IS AN ENJOYABLE HOBBY, saves you money—and no manufacturer saves you more than Lee Precision, Inc. Our mission is simple: produce the best American made value in reloading tools. Our great prices come from patented, innovative designs. We are thankful to say that Lee Precision products are cast, machined and assembled in the USA.

A reloading press and a set of Lee Dies are all you need to start reloading. Lee Dies come complete with powder dipper, shell holder and instructions, along with comprehensive load

data that tells you how much and what type of powder to use. Dies and presses last a lifetime, so buying what your budget allows makes the most sense. For those with a workbench, consider our Lee Bench Plate for the ultimate convenience in mounting your presses. If you don't have a workbench, consider the Lee Reloading Stand, built for the ultimate in rigidity and convenience.

If you have no loading equipment and are just getting started, you must consider that these basic steps need to be taken below.

**Check out our complete line of reloading and casting equipment on our website, then visit your local merchant. If not blessed with a local dealer, one of the many online dealers will quickly and economically fill your order.**

## RELOADING SEQUENCE

### CHARGE

**EXPAND CASE MOUTH AND CHARGE POWDER.** Lee handgun dies are unique in that you can charge powder during this operation

**HANDGUN Powder Through Expanding Die**

**Auto Drum Powder Measure** pg 33

### SEAT & CRIMP

**HANDGUN Bullet Seating Die**

**SEAT AND CRIMP THE BULLET**

**OPTIONAL**

**HANDGUN Carbide Factory Crimp Die**  
Easy to adjust crimp and carbide ring post sizes the case.  
pg 8 & 9

### CHARGE

**CHARGE POWDER**

**Powder Funnel and Dippers** pg 31

**Deluxe Perfect Powder Measure** pg 31

### SEAT

**RIFLE Easy Adjust Dead Length Bullet Seating Die**

**SEAT THE BULLET**

### CRIMP

**FACTORY CRIMP DIE**  
In most circumstances will improve velocity, uniformity and in all cases, factory-like utility & dependability.  
pg 14, 15

## SEQUENCE

## Lee Reloading Stand

At last, a reloading stand built just for your reloading needs. The sturdy powder coated steel stand places your press at the perfect counter stool or standing height. Three-leg design assures absolute stability regardless of the floor condition. Rubber tipped legs suitable for any surface.

The thick steel top is fitted with the patented, quick change Lee Bench Plate System with steel base block to fit all Lee metallic presses.

The stand also includes a sturdy steel shelf with two bench plate receivers that will neatly and securely store your extra presses or mountable accessories.

Each leg has eight mounting holes that allow you to accessorize your stand with a multitude of bins, shelves or accessory racks.

Dimensions 39" high x 26" wide x 24" deep  
90688



## ACCESSORIES



### DIE RACK

Sturdy steel rack with fasteners designed for the Lee Reloading stand. Conveniently holds your dies at the ready, especially helpful when loading small batches of ammo with frequent die changes. Can also be wall or bench mounted. 90680



### BIN AND BRACKET

Sturdy steel bracket and parts bin. Includes fasteners to allow direct mounting to the Lee Reloading stand, or workbench. Perfect for holding bullets, cases and loaded rounds. 90687



### STEEL BASE BLOCK

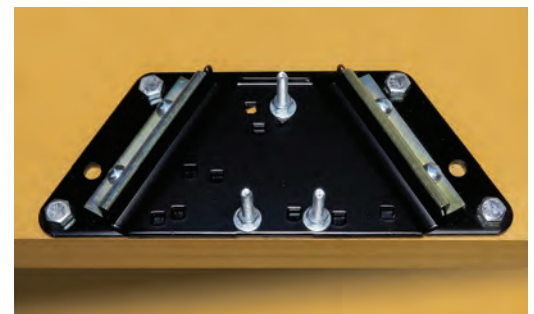
Rigid, powder coated steel construction. First choice for mounting all current Lee Presses. Works with the Lee Reloading Stand and Bench Plate. Fasteners for mounting one Lee reloading press are included. 90267

JUST REMOVE

AND REPLACE



PATENTED DESIGN ALLOWS INSTANT PRESS CHANGE. SO STURDY YOU CAN RESIZE THE MONSTER 50 BMG CASE, THEN QUICKLY SWITCH TO A SMALLER PRESS FOR PRIMING OR OTHER OPERATIONS. TRAPEZOIDAL BASE BLOCK SLIDES INTO PERFECT REGISTER AND MADE IMMOVABLE WITH THE QUICK TIGHTENING OF FOUR BOLTS.



### Lee Bench Plate

Includes steel base block with holes to mount any Lee press. Powder coated, thick steel plate mounts quickly and securely to any bench or tabletop. Wide steel plate distributes load, adding rigidity to the lightest bench top.

90251

# MODERN RELOADING

SECOND EDITION BY RICHARD LEE

UPDATED  
2016

*Learn to reload ammunition  
that's more accurate than your first try*

The Second Edition of MODERN RELOADING is a summary of a lifetime of experience. No matter how knowledgeable you are, you will find new and interesting information in this book. It is a reference book you will keep forever.

**OVER 36,000 LOADS** covering over 170 cartridges in a new, larger, easier to read format, with velocities for starting loads. This is the best kind of load data — it is supplied by the powder companies.

**LOAD DATA SORTED** by velocity descending order.

**DIPPER AND AUTO DISK DATA**

included for easy setup.

**NEW, LARGER, EASIER TO READ FORMAT**

with computer rendered and dimensioned drawings.

Cartridges tabbed for quick reference.

**LATEST INFORMATION ON PRESSURE**

**EXCLUSIVE PRESSURE AND VELOCITY FACTORS**

enable you to accurately calculate pressure and velocity for reduced loads. An absolute necessity for cast bullet shooting.

**A NEVER BEFORE PUBLISHED** in depth analyses of current load data. It gives you insight into the effects of reducing or increasing a charge.



Contains everything  
about reloading  
with the world's most  
comprehensive load data

MODERN RELOADING SECOND EDITION 90277

**7MM REMINGTON MAGNUM**

Useful case capacity 5.27 cc

Cartridge	Case	Grain	Velocity	Pressure	Temp	Temp	Temp	Temp	Temp
7MM REM	5.27	180	2700	5000	5000	5000	5000	5000	5000

0.037 INTRODUCED 1962

**LEE PRECISION 2016**

**Auto-Drum Powder Measure**

Automatic powder dispensing was always a tricky thing and not until Dad invented the Auto-Disk powder measure back in 1962 were the solutions very convenient or even available. The Auto-Disk served us well these many years. Dad received in 1992, after he sold his farm, built an observation cupola on his horse, authorized two editions of Mountain Do Lists, he asked me one day if there was any projects I suggested was a case actuated drum type powder measure. The date was 2011. Dad quickly came up with the patentable Auto-Drum powder measure. Due to his advanced age the very next year the patent office granted a patent on the measure.

With a gun grandfatherly President of the United States in the White House, the entire country wanted to become a gun owner while they still could. In 2013, this set of an unprecedented run on ammunition, guns and reloading equipment. We spent every waking moment simply producing our standard line, selling it faster than we could make it. Within the dist. family setting, we resumed working on the Auto-Drum. Late 2015, we began shipping the Auto-Drum Powder Measure. The measure has been a smashing success, popular with all brands of reloading equipment. One user jokingly suggested we make the hopper of a hopper of a hopper. I wish Dad's mind was sharp enough to see how well his line project worked out.

Our customers are so happy with the new Auto-Drum Powder Measure that it will become the standard powder measure in our Classic Turner Press kit. Our progressive presses may no longer ship with any powder measure, giving

**Auto Bench Prime**

While we worked on the design of the tray and adapters for the New Data units we realized these parts would be perfect for a problem that was estimated years ago the Auto Bench Prime. We introduced the tool with a small set of AMERICAN METERMAN magazine, and it was an immediate success. It is aimed at how efficiently and conveniently it works. This tool will become our most popular priming tool. The to use

the same standard inexpensive priming tool used to endlessly swap shell loaders from your reload. The Auto Bench Prime is a fast and compared one primer. It is a marvel of does not and has a quality label de

You can refill from the largest box of primers and if you want extra trays we offer them in two pack what we used to charge for a cover alone. The cost we now use the folding tray on all of our presses

**POWDER BURNING RATE CHART**

Cartridge	Case	Grain	Velocity	Pressure	Temp	Temp	Temp	Temp	Temp
4506	4.50	180	2700	5000	5000	5000	5000	5000	5000

HEADSPACE 2.229 2.500

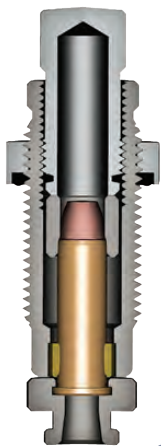
# SELECTING THE BEST HANDGUN DIE SET

**LEE HANDGUN DIES** feature a carbide sizing die — simply the best way to resize straight walled handgun cartridges.

Select the **DELUXE PISTOL 4-DIE SET** when using mixed range brass or brass that was fired in others guns. The Deluxe set includes the **CARBIDE FACTORY CRIMP DIE**. This die allows you to separate bullet seating from the crimping operation. It makes setup much easier and the die has the added feature of a carbide resizer that does a finishing sizing pass on the completed round. This final sizing guarantees that any case that passes through the die will freely and reliably chamber in any gun.

The **CARBIDE & STEEL THREE DIE SETS** work fine when using a quality controlled source of brass, like cases fired only in your gun. More care is required when adjusting the bullet seat and crimp die, as seating and crimping occur simultaneously. Bullet diameter control is important when not using the factory crimp.

*Lee Dies reload cartridges better, easier, more accurately and with fewer problems!*



## CARBIDE FACTORY CRIMP DIE

Carbide ring in base resizes any portion of case that exceeds factory new dimensions. Floating crimp ring is finger adjustable to provide the perfect crimp

## HARDENED STEEL SHELLHOLDER

*Exclusive feature to Lee*  
**POWDER MEASURE & CHARGE TABLE**



*Exclusive feature to Lee*  
**POWDER THROUGH EXPANDING DIE**

Only Lee Dies permit charging the case while expanding the case mouth. Every Lee Pistol Die Set includes this **POWDER THROUGH EXPANDING DIE** at no extra cost. The powder funnel adapter can be replaced with a Lee case actuated Powder Measure (pgs 32-33) for fully automatic powder charging while the case mouth is being expanded.



## CONTOUR GROUND CARBIDE SIZING DIE



## Carbide Sizer

All Lee straight walled pistol dies have tungsten carbide sizer rings. Carbide is so hard that it can only be ground and polished with diamond wheels.

This hard diamond polished surface eliminates the need for case lubrication—they will never wear out. Exclusive contour grind sizes closer to the rim than any other brand.

The collet held decapper is nearly unbreakable even if you misadjust it or deprime crimped primer military cases.

The decapper clamp collet accurately centers the decapper in the die. Should you over stress it for any reason, it harmlessly slides up without breaking. Easily reset with no limit to the amount of times it can be reset.

## BULLET SEAT & FEED DIE



## Lee Bullet Seat and Feed Die

Universal free floating seating plug works with nearly any point style bullet. No need to change seater plugs for different nose types. Finger adjustable seating depth eliminates fumbling with pliers, lock nuts and screwdrivers to make simple seating depth adjustment. Die is tapered on end for use with automatic bullet feeders.

**LEE**  
*exclusive*  
**feature**



ONLY LEE DIES COME COMPLETE WITH POWDER MEASURE and CHARGE TABLE

**LEE CARBIDE DIES** are used in commercial loading machines that cycle four to five thousand times per hour. You can't wear them out with personal use. These are the most copied dies ever invented. The competition tries to copy our dies, but come up short. Only Lee puts it all together to make the best pistol dies money can buy. Reloaders buy Lee Dies because they are the best made and have the most features. No other brand can compare!

### Lee Deluxe Pistol 4-Die Set

Combines the world's most popular carbide three-die set with the Lee Carbide Factory Crimp Die at a great price. No other die set at any price produces more reliable or accurate ammo.

By separating the seating and crimping operation, you will benefit by greatly simplified adjustment. More importantly, the Carbide Factory Crimp Die post sizes your case, assuring that any round that passes through the die will chamber properly in your gun. This, plus all the other exclusive features — make this the best die set money can buy!

### Lee Carbide Pistol 3-Die Set

We use a solid carbide insert, ground to a special contour that does not leave the objectional belt mark on the case, common to ordinary carbide dies. With a carbide sizer, no case lube is needed, and you don't even have to clean your cases.

**NO NEED FOR A TAPER CRIMP DIE;  
BETTER ACCURACY WITH LEE DIES.**

Taper crimp dies are used to correct the problems caused by the improper expanding plug design or adjustment. They distort the bullet shank and reduce accuracy. Because the Lee Expander flares the minimum amount, consistent with easy bullet insertion, all of the flare is removed with the bullet seating die, thus eliminating the need for a taper crimp die.

### Lee Very LTD Pistol 4-Die Set

Same features as our 3-die carbide die sets, except the case must be lubricated. Includes a taper crimp die.

### Lee Steel Pistol 3-Die Set

Same features as our premium carbide sets, except the case must be lubricated.

### Finger Tighten Lock Rings

Lock rings are easily adjusted and tightened with fingers only. No tools are needed. Yet they will never loosen or move while reloading.



### Storage is easy

Lee Dies are packed in a fitted box that allows dies to be returned to the box adjusted with or without the Lee Breech Lock bushing installed.



### Have a Breech Lock Press?

Breech lock bushings fit all Lee Breech Lock presses. Allows instant, accurate die changes.

### BREECH LOCK BUSHINGS

**90600 2-PK**  
Perfect with Lee Lock Rings



### LOCK-RING ELIMINATOR

Breech lock quick change bushing with integral lock collar provides unmatched precision and convenience when adjusting dies. Split clamp positively locks die into position.

**90063 2-PK**



### ROUND DIE BOX

lets you store dies installed in a 3 or 4-hole turret.

### LEE DIE BOXES

Perfect storage for dies. Made from tough, durable plastic.

- ROUND DIE BOX** 90535
- FLAT 2-DIE BOX** 90078
- FLAT 3-DIE BOX** 90791
- FLAT 4-DIE BOX** 90422

Holds dies with Breech Lock Quick Change insert installed.



SHELL HOLDER	FOR PRESSES
#1	90518
#2	90519
#3	90520
#4	90521
#5	90522
#6	90523
#7	90524
#8	90525
#9	90526
#10	90527
#11	90528
#12	90529
#13	90199
#14	90001
#15	90002
#16	90003
#17	SD2827
#18	SD2980
#19	90004
#20	SD3590
#21	90599
#22	SD2396
#23	SD2700
#24	SD1874
#25	SD1351

## Not purchasing Lee dies?

**You'll need a shell holder.** Only Lee offers a FREE shell holder with every pistol die set purchase

### Set of Shellholders

Eleven of the most popular sizes fit over 115 different cartridges. The chart ( at right ) is included with each shell holder set.

**# 1 • 2 • 3 • 4 • 5 • 7 • 8  
9 • 10 • 11 • 19**

### UNIVERSAL SHELL HOLDER SET 90197

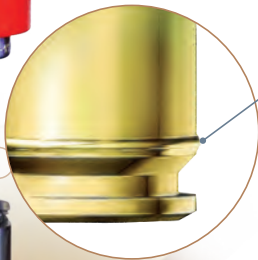
Works with all brands of presses



HOLDER	PISTOL
15	5.7 × 28
1	22 Rem. Jet
15	25 ACP
1	256 Win. Magnum
19	30 Luger
19	30 Mauser
4	32 Short Colt
4	32 Long Colt
4	32 S & W
4	32 S & W Long
7	32 ACP
4	32 Colt N.P.
4	380 Auto
19	9mm LUGER
1	38 S & W
1	38 Colt N.P.
19	38 Super Auto
19	38 ACP
1	38 Short Colt
1	38 Long Colt
1	38 Special - 357 Mag
19	357 Sig
2	357 Auto Magnum
19	40 S&W - 10mm Auto
1	41 Long Colt
19	41 Action Express
9	41 Magnum
11	44 S&W Spl - 44 Mag
11	44 S & W Russian
2	44 Auto Mag.
2	45 Auto
11•14	45 Colt
11	454 Casull
14	460 S&W
5	455 Webley
13	45 Auto Rim
3	45 Win. Magnum
5•16	480 Ruger
5	475 Linebaugh
16	500 S&W



BULGE BUSTER KIT  
shown mounted to  
Breech Lock  
Reloader Press  
( 90045 ). Sold  
separately, pg. 18



Utilize all your brass  
by removing  
annoying bulge rings

With the  
Lee Factory Crimp Die,  
the Bulge Buster  
will repair  
all these rimless cases

90867	380 ACP
90862	10 mm
90862	40 S&W
90416	41 AE, 41 MAG
90864	45 ACP
90864	45 GAP
90864	45 WIN MAG

Catch  
Container



Push  
through  
Punch      Extension  
Sleeve

## For handgun ammunition that must work!

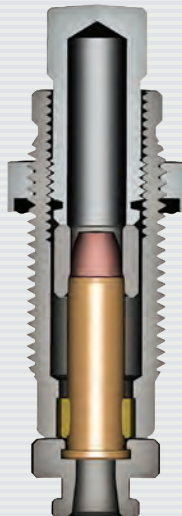
### Lee Carbide Factory Crimp Die



INCLUDED WITH  
**DELUXE  
4-DIE SETS**

A carbide sizer sizes the cartridge while being crimped so every round will positively chamber freely with factory like dependability. The adjusting screw quickly and easily sets the desired amount of crimp. It is impossible to buckle the case as with a conventional bullet seating die. Trim length is not critical so this extra operation takes less time than it would if cases were trimmed and chamfered.

Revolver dies roll crimp with no limit as to the amount. A perfect taper crimp is applied to auto-loader rounds. The crimper cannot be mis-adjusted to make a case mouth too small to properly head-space. A firm crimp is essential for dependable and accurate ammunition—it eliminates the problems of poor ignition of slow burning magnum powders.



	CRIMP STYLE	CAERBIDE FACTORY CRIMP DIE	SHORT BOTTLE NECK COLLET STYLE FACTORY CRIMP DIE	COLLET STYLE FACTORY CRIMP DIE	TAPER CRIMP DIE
5.7X28 FN		N/A	90725	N/A	N/A
22 TCM		N/A	90087	N/A	N/A
30 M1 CARBINE		N/A	N/A	90421	N/A
30 LUGER		N/A	90175	N/A	N/A
30 TOKAREV & 30 MAUSER		N/A	90086	N/A	N/A
32 S&W LONG & 32 H&R MAG	ROLL	90067	N/A	N/A	N/A
9MM MAKAROV	TAPER	90807	N/A	N/A	N/A
9MM LUGER	TAPER	90860	N/A	N/A	90780
357 SIG		N/A	90076	N/A	N/A
38 SUPER & 38 ACP	TAPER	90866	N/A	N/A	90780
380 AUTO	TAPER	90867	N/A	N/A	N/A
38 SPECIAL	ROLL	90861	N/A	N/A	90781
357 MAGNUM	ROLL	90861	N/A	90813	90781
40 S&W & 10MM AUTO	TAPER	90862	N/A	N/A	90782
41 MAGNUM	ROLL	90416	N/A	N/A	N/A
44 SPECIAL	ROLL	90863	N/A	N/A	90784
44 MAGNUM	ROLL	90863	N/A	90930	90784
44 RUSSIAN	ROLL	90863	N/A	N/A	N/A
45 COLT	ROLL	90865	N/A	90302	90786
45 ACP · 45 AUTO RIM · 45 GAP · 45 WIN MAG	TAPER	90864	N/A	N/A	90785
400 CORBON		N/A	90173	N/A	N/A
455 WEB MARK II		N/A	N/A	N/A	90785
454 CASULL	ROLL	90865	N/A	N/A	90786
460 S&W		N/A	N/A	90926	N/A
500 S&W		N/A	N/A	90931	N/A



FOR UNIFORM CRIMPS, BE SURE YOUR CASES ARE A CONSISTENT, SAFE LENGTH

## DELUXE QUICK TRIM

Trim brass to the correct length while chamfering the case mouth



DELUXE QUICK TRIM #90437

DELUXE POWER QUICK TRIM #90670

PISTOL CARTRIDGE	QUICK TRIM DIE BODY
9mm Makarov	90181
9mm Luger	90032
380 Auto	90025
38 Special	90085
357 Magnum	90088
40 S&W	90033
10mm Auto	90193
41 Magnum	90226
44 Special	90107
44 Magnum	90125
45 ACP	90073
45 Colt	90145
454 Casull	90174
500 S&W	90178



### Short Bottle Neck Collet Style Factory Crimp Die

Incorporates a collet to apply a rifle type crimp to the case. Makes these very difficult to crimp cartridges a delight to reload. Bullets do not need a crimp groove, as the collet is so powerful it will form one.

BOTTLE NECK PISTOL FACTORY CRIMP DIE



### Taper Crimp Die

The Lee Taper Crimp Die is hardened steel, designed to overcome crimp problems caused by poor die design. These dies offer little or no advantage when used with 1986 or newer Lee Dies, as the crimp angle is already a modified taper crimp. Jacketed bullets must have a crimp groove.

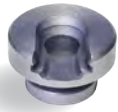
TAPER CRIMP DIE



### Lee Collet Style Factory Crimp Die





POPULAR WITH CAST BULLET SHOOTERS that wish to use oversize bullets, also very popular when reloading for heavy recoiling revolvers. No other crimping system can apply as secure a crimp as the Lee collet style Factory Crimp. No crimping groove required in jacketed or cast bullets, the die is so powerful it will form a crimp groove if one is not present.

COLLET STYLE CRIMP DIE



**FREE SHELLHOLDER INCLUDED WHERE SHOWN**

The price of Lee Dies include a FREE shell holder of the proper size.

 DELUXE PISTOL 4-DIE SET   p 7	 VERY LIMITED STEEL 4-DIE SET   p 7	 CARBIDE 3-DIE SET   p 7	 STEEL 3-DIE SET   p 7	CARBIDE SIZING DIE	POWDER THROUGH EXPANDING DIE	TAPER CRIMP DIE   p 9	FACTORY CRIMP DIE   p 8-9	COLLET STYLE CRIMP DIE   p 9	CASE LENGTH GAUGE   p 28	UNIVERSAL SHELLHOLDER   p 7	PRIMING TOOL SHELLHOLDER   p 26	QUICK TRIM DIE BODY   p 9
---	--	---	---	--------------------	------------------------------	-----------------------	---------------------------	------------------------------	--------------------------	-----------------------------	---------------------------------	---------------------------

25 ACP			90568		S/O	S/O					90002	90017	
30 M1 Carbine			90626♦		90617♦	90494			90421	90135	90524	90207	90365∞
30 Luger				90754	S/O	S/O		90175			90004	90023	
30 Mauser				90755	S/O	S/O		90086			90004	90023	
7.62 Tokarev				90769	S/O	S/O		90086			90004	90023	
32 ACP			90622		90621	S/O		90067			90524	90207	
32 S & W			90696		S/O	S/O		90067			90521	90204	
32 S & W Long ¶			90624		90621	90490		90067		90169	90521	90204	
32 H&R Mag / 327 Federal			90809		90621	S/O		90067			90521	90204	
32/20				90751	S/O	S/O		90851		90146	90523	90206	
38/40				90761	S/O	S/O		90852			90001	90272	
9mm Makarov			90176		S/O	S/O		90807		90684	90004	90023	90181
9mm Luger	90963		90509		90548	90580	90780	90860		90153	90004	90023	90032
357 Sig				90270	S/O	S/O		90076			90004	90023	
38 Short / Long Colt			90276		S/O	S/O					90518	90201	
38 Super / 38 ACP			90623		90619	S/O	90780	90866		90217	90004	90023	
380 Auto	90447		90625		90618	90492	90780	90867		90155	90521	90204	90025
38 S & W			90569		90619	S/O				90156	90518	90201	
38 Special ¶	90964		90510		90530	90581	90781	90861		90157	90518	90201	90085
357 Magnum ¶			90511		90530	90581	90781	90861	90813	90158	90518	90201	90088
40 S & W ¶	90965		90799		S/O	90620	90782	90862		90154	90004	90023	90033
10mm Auto			90566		S/O	90620	90782	90862		90127	90004	90023	90193
41 Mag			90628		S/O	S/O		90416		90159	90526	90209	90226
44 Special ¶	90966		90516		90531	90583	90784	90863		90160	90528	90211	90107
44 Mag			90512		90531	90583	90784	90863	90930	90161	90528	90211	90125
44 Russian			90293		90531	S/O		90863			90528	90211	
44/40				90564	S/O	S/O		90854		90168	90001	90272	
45 Colt #	90967		90514		90533	90586	90786	90865	90302	90163	90528	90211	90145
45 ACP	90968		90513		90532	90585	90785	90864		90162	90519	90202	90073
45 Auto Rim			90808		90532	90585	90785	90864			90199	90213	
45 Schofield			90323		90532	S/O	90785				90001	90272	
400 Cor Bon				90430*	S/O	S/O		90173			90519	90202	
455 Web Mark II			90764		90533	S/O	90785				90522	90205	
45 Win Mag			90810		90532	90585	90785	90864			90520	90203	
454 Casull			90795		90533	90586	90786	90865		90992	90528	90211	90174
45 Gap			90498		90532	S/O		90864		90224	90519	90202	
460 S & W			90344		S/O	S/O			90926	90220	90001	90272	
480 Ruger ‡			90499		S/O	S/O				90018	90522	90205	
50 Action Express				90329	S/O	S/O					90528	90211	
500 S & W Mag			90288		S/O	S/O			90931	90019	90003	90200	90178
50 Beowulf		90296*			S/O	S/O	S/O				90529	90212	

¶ Can be used to load magnum cases   ♦ Can be used to load maximum cases   ‡ can be used to load the 475 Linebaugh   # can be used to load the 454 Casull   ♦ 30 M-1 Carbine   \* These dies do not include load data   S/O Special Order Factory Direct



# SELECTING THE BEST RIFLE DIE SET

## LEE PACESETTER DIES & RGB SERIES

For producing factory-dimensioned ammo that reliably fits and feeds in any gun. First choice for semi-auto actions. Full-length sizing is a must if you are reloading for more than one firearm or reloading cases that were fired in other firearms. Pacesetter 3-die sets include the LEE FACTORY CRIMP DIE.



## LEE COLLET NECKSIZING DIES

For best accuracy, longest case life and no resizing lubricant. Only the neck of the case is resized. The body is untouched—retains perfect fit to your gun's chamber. Cases should have been fired in your firearm only, and reloaded rounds are intended for use in just one firearm. These are the favorite of the bench rest crowd as there is no other die that can produce a more accurate cartridge.

If you intend to reload cases fired in other guns or you are reloading for more than one gun, select the **ULTIMATE RIFLE DIE SET**. The Ultimate set includes a full length resizing die that allows you to restore any case to factory original dimensions so that you can fire form in your gun and then reload using the superior Collet neck sizing die. Ultimate Rifle Die Sets include the LEE FACTORY CRIMP DIE.

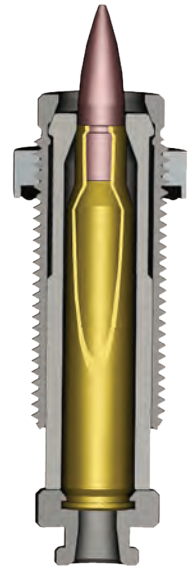


## Lee Factory Crimp Die

The Lee Factory Crimp Die is the only effective way to crimp bottleneck rifle cartridges. Our Factory Crimp Die should be used on all loads used for hunting. Applying a factory crimp will always improve the utility of the cartridge, and in most cases, will also improve the accuracy.

The Lee Factory Crimp die crimps the bullet in place more firmly than any other tool. It is impossible to buckle the case as with regular roll crimp dies. Trim length is not critical. Tests demonstrate that even bullets which have no cannelure will shoot more accurately if crimped in place with the Lee Factory Crimp Die.

Factory ammunition is often more accurate and better able to withstand rough handling because the bullet is firmly crimped in place. A firm crimp improves accuracy because pressure must build to a higher level before the bullet begins to move. This higher start pressure insures a more uniform pressure curve and less velocity variation. Even powder selection is less critical. Until now, hand-loaders seated the bullet to touch the rifling to achieve similar results. This is not always possible nor desirable. The Lee Factory Crimp Die is included at no extra charge with Lee PaceSetter 3-Die Sets and Ultimate Rifle Die Sets. It's just another added value that only Lee Dies offer.



**NO CRIMP GROOVE REQUIRED EVEN WITH JACKETED BULLETS**

SHELL HOLDER	FOR PRESSES
#1	90518
#2	90519
#3	90520
#4	90521
#5	90522
#6	90523
#7	90524
#8	90525
#9	90526
#10	90527
#11	90528
#12	90529
#13	90199
#14	90001
#15	90002
#16	90003
#17	SD2827
#18	SD2980
#19	90004
#20	SD3590
#21	90599
#22	SD2396
#23	SD2700
#24	SD1874
#25	SD1351

## Not purchasing Lee dies?

**You'll need a shell holder.** Most Lee Rifle Dies include a FREE shell holder.

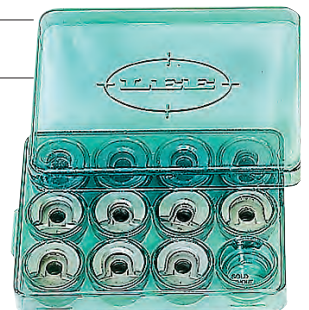
## Set of Shellholders

Eleven of the most popular sizes fit over 115 different cartridges.

**# 1 • 2 • 3 • 4 • 5 • 7 • 8  
9 • 10 • 11 • 19**

**UNIVERSAL PRESS SHELLHOLDER SET 90197**

Work with all brands of presses



# BEST internal finish in the industry

**ALL LEE DIES ARE MACHINE HONED TO THE SMOOTHEST POSSIBLE FINISH**

Don't confuse this with the surface polish that's used by most manufacturers. A polish simply makes a shiny surface. It's like trying to sand wood without backing under the sandpaper. The surface in Lee dies is progressively honed to a fine finish with no waves or ripples.

**INCLUDES**

- FULL LENGTH SIZER
- EASY ADJUST DEAD LENGTH BULLET SEATING DIE
- FACTORY CRIMP DIE
- BUILT IN STUCK CASE REMOVER
- EASY X EXPANDER
- SHELL HOLDER
- POWDER DIPPER
- LOAD DATA & INSTRUCTIONS



**INCLUDES THE EXCLUSIVE LEE FACTORY CRIMP DIE**

### Lee PaceSetter™ 3-Die Set

These dies are your best buy! Lee PaceSetter 3-Die sets include the exclusive Lee Factory Crimp™ Die to produce factory-like ammunition with improved utility and accuracy. The die set also includes an easy adjust dead length bullet seater, shell holder, powder dipper, load data—and all are packed in the nicest storage box ever designed.

### Lee PaceSetter™ 2-Die Set

The same features and quality of our standard dies, but do not include a Lee Factory Crimp Die. You'll find no better die at any price. Half the price of competitive dies and theirs don't include load data, which is priceless on odd or obsolete calibers. Our dies also include the correct shellholder and powder measure. Includes SHELLHOLDER • POWDER DIPPER • LOAD DATA  
**LEE PACESETTER 2-DIE SET**



### Lee Resizing Lubricant

Another first by Lee. We purchased the finest automotive deep draw lubricant and had it custom packaged exclusively for us. Lee lube is pleasant to handle and you can thin it with water. Non-sticky, nonallergenic. Very little is needed; it goes a long way. Eliminates stuck and dented cases and makes sizing less work.

**2 OZ. TUBE 90006**



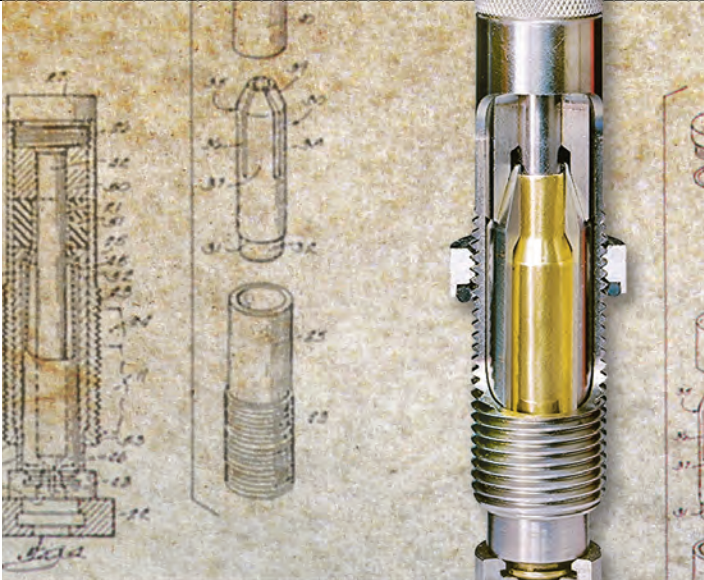
**Really Great Buy!**

### RGB Dies

Compare to other brands costing twice as much and you'll recognize what a fantastic bargain they are. We offer these only to show that when you buy Lee Dies — without all of the extras Lee customers have come to expect—the price is significantly lower, yet the quality is the best. Our tolerance is 50% less than the advertised amount of a popular and expensive brand. We guarantee these dies to be better than any other brand. If for any reason you're not 100% satisfied—just return them to the factory with your sales slip and pay the difference of what you paid and the manufacturer's catalog list price of the dies you want. We will ship them to you with our thanks for trying ours.



# COLLET DIES · ULTIMATE DIE SET



## GUARANTEED TO LOAD THE MOST ACCURATE AMMUNITION OR YOUR MONEY BACK

- NO LUBRICATION REQUIRED
- GUARANTEED ACCURACY
- EXTENDS CASE LIFE 10X
- FASTEST TO USE
- NO CLEANING OR LUBING REQUIRED

### Lee Collet Dies

There is no loading system that will load more accurate ammunition than Lee Collet Dies. We guarantee it in writing with every set. No one but Lee has ever dared make a guarantee like this — **SMALLEST GROUP SIZE OR YOUR MONEY BACK**. A collet squeezes the case neck against a precision mandrel for a perfect bullet fit with minimum run-out. No case lube is needed. Cases

last ten times longer, so the savings on only 35 cases will pay for the dies. Maximum accuracy is usually achieved by seating the bullet out far enough to touch or almost touch the rifling. This provides the shot start pressure normally supplied by the crimp. That's why a dead length bullet seater is included to complete the most accurate

reloading system ever made. These dies size only the neck to preserve the perfect fit of fire forming. Only reload cases that have been fired in your gun. Not recommended for autoloaders, slide or lever action guns. See list of sizes on pages 14-15.

### Lee Ultimate Rifle Die Set

Choose this die set for maximum versatility. The set features a FULL LENGTH-RESIZING DIE to return brass to factory new dimensions, perfect for reloading brass fired in other guns. The COLLET NECKSIZING DIE is used on your fire formed brass giving you best possible accuracy. No case lube required and cases last almost forever. The EASY ADJUST DEAD LENGTH BULLET SEATING DIE foolproofs the bullet seating adjustment, and assures perfect seating depth every time. THE FACTORY CRIMP DIE provides a secure crimp on bullets with or without a crimp groove. In most cases, it helps accuracy by providing a uniform higher start pressure and gives the finished cartridge factory-like accuracy and dependability.

The set is complete with shell holder, powder measure and famous Lee load data featuring all common brands of powder organized in an easy to read logical format.

#### IN ADDITION TO BEST ACCURACY, YOU GET THESE BENEFITS

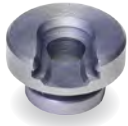
- NO CASE LUBRICATION REQUIRED WITH COLLET DIE
- REDUCED OR ELIMINATES CASE TRIMMING
- TEN TIMES INCREASED CASE LIFE
- UNMATCHED SPEED AND CONVENIENCE
- MINIMUM BULLET RUNOUT
- MOST UNIFORM NECK TENSION



### LEE COLLET DIES ACCURACY CONTRIBUTES TO WORLD RECORD



While competing in a regularly sanctioned 1000 YARD MATCH on July 25th, 1993, Robert Frey established a new 1000 yard world record. We're honored he used the Lee Collet Die to load his record setting ammunition. World record breaker Robert Frey commented: "The Lee Collet Neck Sizing Die enables me to get top accuracy from my rifles (match and hunting). The design principle of sizing the case neck to a mandrel is unmatched for accuracy potential by any other dies. It is one of the best ways to make all of my rifles shoot their tightest groups."



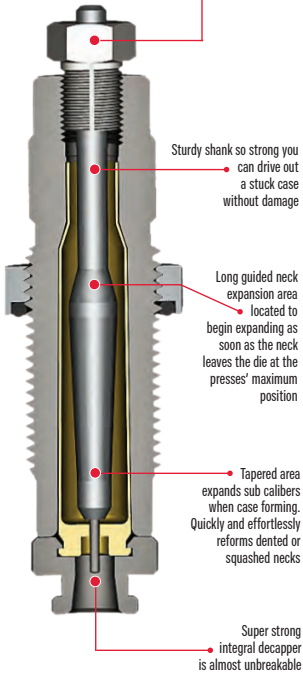
**FREE SHELLHOLDER INCLUDED WHERE SHOWN**

The price of Lee Dies include a FREE shell holder of the proper size.

**LEE RIFLE DIES FEATURE**

**THE LEE EasyX EXPANDER**

Collet type decapper clamp. Holds Easy X Expander perfectly centered in the die. Allows decapper to slide harmlessly up preventing decapper breakage if an obstruction is encountered



Sturdy shank so strong you can drive out a stuck case without damage

Long guided neck expansion area located to begin expanding as soon as the neck leaves the die at the presses' maximum position

Tapered area expands sub calibers when case forming. Quickly and effortlessly reforms dented or squashed necks

Super strong integral decapper is almost unbreakable



**Finger Tighten Lock Rings**

Finger tighten — set and forget, they never move. No tools are needed. Yet they will never loosen or move while reloading. These are so popular that we sell thousands of lock rings to people who want to update other brands.

**LEE LOCK RINGS SET OF 3 90534**

	RGB DIES   p 12	PACESETTER 3-DIE SET   p 12	PACESETTER 2-DIE SET   p 12	PACESETTER VERY LTD. PRODUCTION	COLLET DIE SET p 13	ULTIMATE RIFLE DIE SET p 13	COLLET NECK SIZING DIE   p 33	.002 UNDERSIZE COLLET MANDREL	FACTORY CRIMP DIE   p 9, 11	CASE LENGTH GAUGE   p 28	UNIVERSAL SHELLHOLDER   p 30	PRIMING TOOL SHELLHOLDER   p 30	QUICK TRIM DIE BODY   p 29
17 Hornet		90096							90605	N/A	SD3590	90020	90611
17 Remington			90770		90804					N/A	90521	90204	90435
204 Ruger		90417			90734				90567	N/A	90521	90204	90439
22 TCM				90803*					90087=		90521	90204	
22 Hornet		90500			90705				90829	90111	SD3590	90020	90354
5.7 x 28 FN				90603					90725=		90002	90017	
218 Bee		90753							90830	90225	90523	90206	
221 Fireball		90549							90829	90112	90521	90204	
222 Remington	90870	90501			90706				90816	90113	90521	90204	90340
223 Remington	90871	90502			90707	90694	90954	90602	90817	90114	90521	90204	90179
223 Ack. Imp.				90981-							90521	90204	
25-45 Sharps				90475*							90521	90204	
22/250	90872	90503			90708	90739	90955	90602	90818	90116	90519	90202	90284
22/250 Ack. Imp.				90980-							90519	90202	
220 Swift		90542			90702					90831	90118	90527	90210
223 WSSM			90446							90673	90522	90205	
243 Winchester	90873	90504			90709	90556	90956	90007	90819	90119	90519	90202	90320
6mm Rem/244 Rem		90540			90710			90007	90832	90120	90519	90202	90434
6mm Musgrave				90278-*							90522	90205	
6mm/284				90984							90519	90202	
243 WSSM			90990						90187	90389	90522	90205	
25/20 WCF		90750							90833	90121	90523	90206	
25/35			90778								90520	90203	
250 Savage		90550							90834	90122	90519	90202	
257 Roberts		90551			90703				90835	90123	90519	90202	
257 Ack. Imp.				90988-							90519	90202	
260 Remington		90298			90974			90069	90977	90993	90519	90202	90399
25/06 Rem		90536			90711		90957		90836	90124	90519	90202	90334
25 WSSM			90413								90221	90522	90205
264 Win Mag			90774								90522	90205	
6.5 Carcano			90749							90043	90519	90202	
6.5 Japanese			90730								90527	90210	
6.5 Rem Mag			90773								90522	90205	
6.5 x 55 Mauser	90874	90627			90712			90069	90837	90126	90520	90203	90337
6.5 Creedmoor						90939		90069	90704	90814	90519	90202	90812
6.5/300 Win Short Mag				90985							90522	90205	
6.5 Grendel				90557-					90596		90529	90212	
270 Win Short Mag		90572							90962	90117	90522	90205	90393
270 Winchester	90875	90505			90713	90593	90958	90496	90820	90128	90519	90202	90229
6.8 Rem SPC		90427							90735	90189	SD3391	90031	90397
7/30 Waters		90748							90838		90520	90203	
7 x 57 Mauser		90541			90714			90631	90839	90130	90519	90202	90489
7 x 64 Brenneke		90771							90821	90236	90527	90210	
7mm/O8		90537			90723			90631	90840	90167	90519	90202	90343
7mm Express/280 Rem		90552			90724			90631	90841	90166	90519	90202	90412
7mm Win Short Mag			90573							90314	90522	90205	
7mm Rem Mag	90876	90538			90720	90679		90631	90821	90131	90522	90205	90297
7mm STW		90678							90869		90522	90205	
7mm Ultra Mag		90979							90869		90522	90205	
280 Ack. Imp.				90989-							90519	90202	
284 Winchester			90777							90129	90519	90202	
7.35 Carcano			90766								90519	90202	
7.5 x 55 Swiss		90767			90186			90480	90184	90132	90520	90203	90419
7.5x54 MAS		90246							90842	90051	90520	90203	
7.62x39 Russian	90877	90565			90701				90827	90133	90529	90212	90345
7.62x54 Russian		90731							90842	90147	90003	90200	90342

\* THESE DIES DO NOT INCLUDE LOAD DATA

~ 3 DIE SET WITH FACTORY CRIMP DIE

≈ BOTTLE NECK FACTORY CRIMP DIE



RGB DIES | p 12

PACESETTER 3-DIE SET | p 12

PACESETTER 2-DIE SET | p 12

PACESETTER VERY LTD. PRODUCTION

COLLET DIE SET p13

ULTIMATE RIFLE DIE SET p 13

COLLET NECK SIZING DIE | p 13

.002 UNDERSIZE COLLET MANDREL

FACTORY CRIMP DIE | p 9,11

CASE LENGTH GAUGE | p 28

UNIVERSAL SHELLHOLDER | p 30

PRIMING TOOL SHELLHOLDER | p 30

QUICK TRIM DIE BODY | p 29

	90575		90772				90590	90443	90521	90204	90689
300 AAC Blackout	90555						90843	90137	90522	90205	
30/40 Krag	90506		90716	90693		90480	90822	90136	90520	90203	90249
30/30 Win		90982-									
30/30 Ack. Imp.	90756						90823		90528	90211	
303 Savage	90879	90507		90718	90695	90959	90480	90823	90139	90519	90202
308 Winchester	90942		90185				90480	90331	90034	90522	90205
300 Win Short Mag	90545							90844	90138	90519	90202
300 Savage			90951					90951		90519	90202
30/284	90880	90508		90715	90736	90960	90480	90824	90140	90519	90202
30/06			90987							90519	90202
338/06	90881	90539		90722	90738	90961	90480	90825	90142	90522	90205
300 Win Mag	90560			90726				90970	90141	90522	90205
300 H & H	90558			90727				90845	90143	90522	90205
300 Weatherby Mag	90698							90970	90141	90522	90205
300 Ultra Mag	90732							90846	90134	90520	90203
7.65 Arg Mauser	90733							90847	90115	90519	90202
7.7 Jap	90882	90547		90717				90826	90144	90522	90205
303 British			90758							90520	90203
32-40			90757							90520	90203
32 Winchester Special			90759							90525	90208
33 Winchester			90923						90222	90522	90205
325 WSM			90925						90589	90003	90200
8x56 R Hungarian	90883	90544		90719				90848	90148	90519	90202
8x57 Mauser			90768							SD2827	N/A
8mm Lebel										90525	90208
41 Swiss			90411*								
338 Winchester	90546			90721			90849	90149	90522	90205	90391
338 Lapua		90353		LARGE SERIES DIES—at right			LARGE SERIES DIES—at right	90462	SD1351	SH2426	
338 Ultra Mag		90927							90522	90205	
348 Winchester	90760						90857		90525	90208	
350 Rem Mag		90776							90522	90205	
358 Winchester	90797						90904		90519	90202	
35 Remington	90543			90728			90828	90150	90519	90202	90403
35 Whelen		90752						90972	90519	90202	
9.3 x 62 Mauser	90654						90610		90519	90202	90614
375 Ruger	90090						90609		90522	90205	90613
38-56		90763							90525	90208	
375 H & H	90559			90729			90850	90164	90522	90205	90395
416 Remington	90805						90906		90522	90205	
416 Taylor			90983						90522	90205	
43 Mauser		90806							SD2980	N/A	
43 Spanish		90765							SD2827	N/A	
32-20	90751‡						90851	90146	90523	90206	
38-40	90761‡						90852		90001	90272	
38-55	90762‡						90853	90994	90520	90203	
375 Winchester	90563‡						90905	90165	90520	90203	
40/65 Win	90986‡								90525	90208	
44/40	90564‡						90854	90168	90001	90272	
444 Marlin	90562‡						90855	90151	90528	90211	
45/70 Government	90561‡		45/70 Dies do not work on Hornady LEVERevolution cases				90856	90152	90525	90208	90458
458 Socom			90409				90815		90519	90202	
40/60			90214*						90525	90205	
45/60			90215*						SD2700	N/A	
45/75			90216*						SD2700	N/A	
458 Win Mag	90800‡						90969	90971	90522	90205	

**3 DIE SETS WITH POWDER THROUGH EXPANDING DIE**

**ROUND DIE BOX**  
lets you store dies installed in a 3 or 4-hole turret.



**LEE DIE BOXES**

Perfect storage for dies. Made from tough, durable plastic.

- SINGLE DIE BOX 90616
- ROUND DIE BOX 90535
- FLAT 2-DIE BOX 90078
- FLAT 3-DIE BOX 90791
- FLAT 4-DIE BOX 90422

Holds dies with Breech Lock Quick Change insert installed.

**1/4-12 THREAD SERIES**

**FACTORY CRIMP DIES**

- 90953 50 BMG
- 90745 338 Lapua

**1/4-12 THREAD SERIES**

**COLLET DIES**

- 90747 50 BMG
- 90635 338 Lapua

**1/4-12 THREAD SERIES DIES**

- 90902 577/450 Martini-Henry\*
- 90929 577 Snider\*
- 90252 416 Barrett\* Shellholder not included
- 90515 50 BMG Shellholder not included

\*THESE DIES DO NOT INCLUDE LOAD DATA

## Have a Breech Lock Press?

Breech lock bushings fit all Lee Breech Lock presses. Allows instant, accurate die changes.

**BREECH LOCK BUSHINGS**

**90600 2-PK**

Perfect with Lee Lock Rings



**LOCK-RING ELIMINATOR**

Breech lock quick change bushing with integral lock collar provides unmatched precision and convenience when adjusting dies. Split clamp positively locks die into position.

**90063 2-PK**



\* THESE DIES DO NOT INCLUDE LOAD DATA

‡ 3 DIE SET WITH FACTORY CRIMP DIE

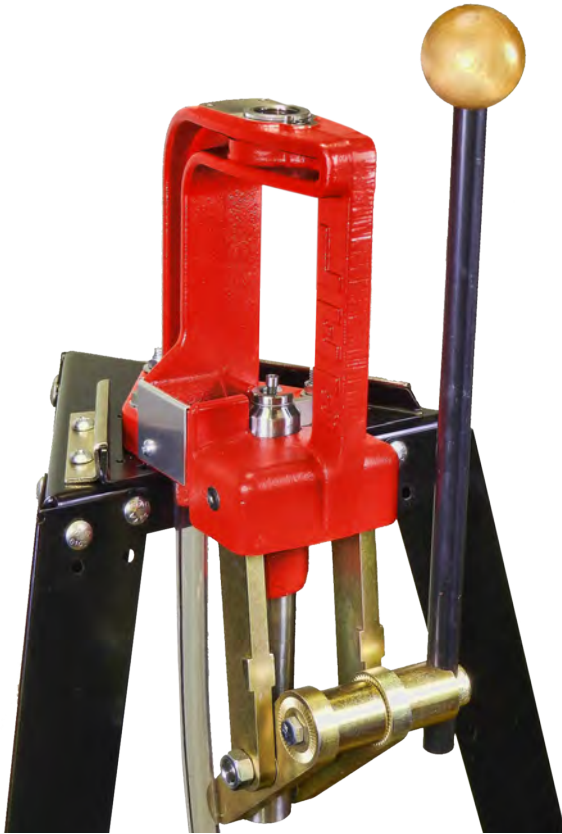
**RELOADING PRESSES LAST A LIFETIME**, so buying on what your budget allows makes the most sense. You'll never regret buying a value priced press — you'll always have a need for a simple press for miscellaneous jobs.

All Lee Presses feature compound toggle linkages. This permits full length sizing the largest magnum cases with

ease. Many feature built-in spent primer catchers, tough powder paint coating and detailed instructions. Under normal use, all our presses will last a lifetime. For those that simply want the best, you can't beat the "Classic Cast."

## SINGLE STATION PRESS OPTIONS

RECOMMENDED FOR NEW RELOADERS  
OR THOSE WHO PREFER TO BATCH LOAD



**SINGLE STATION PRESSES** will load nearly any cartridge. Cartridges are loaded in a batch process—for example, 20 cases are de-primed and sized, charged, then bullets seated. This die changing process is sped up by the LEE BREECH LOCK QUICK-CHANGE SYSTEM. Rifle case reloading is best accomplished on a single station press. For a beginner, a single station press in a kit is the best value.

COMPATIBLE CARTRIDGES	ROUNDS PER HOUR
-----------------------	-----------------

All cartridges up to 460 Weatherby Mag 50

**Breech Lock Classic Cast Press # 90999** PAGE 20

**Breech Lock Challenger Press # 90588** PAGE 19

**Breech Lock Reloader Press # 90045** PAGE 18

COMPATIBLE CARTRIDGES	ROUNDS PER HOUR
-----------------------	-----------------

All cartridges up to 50 BMG  
Accepts both 7/8 - 14 Threaded Dies and  
Large Series Threaded Dies 1 1/4 - 12 50

**Classic Cast Press # 90998**  
SEE MORE INFORMATION ON PAGE 21

## SINGLE STAGE PRESS KIT OPTIONS

IF YOU ARE JUST GETTING STARTED,  
YOU CAN SAVE EVEN MORE MONEY BY PURCHASING A KIT



**Breech Lock Hand Press Kit #90180** page 18



**Breech Lock Challenger Kit #90030** page 19



**50th Anniversary Kit #90050** page 19



**NEW** Deluxe Challenger Kit #  
90080 page 19



# PRESS OVERVIEW

MULTI-STATION PRESS OPTIONS



RECOMMENDED FOR ADVANCED HIGH VOLUME USERS

**TURRET PRESS**

**PRO 1000**

**LOAD-MASTER**

**TURRET PRESSES** offer single station simplicity with near progressive speed. No need to unscrew dies; the turret advances to the next station automatically. Four pulls of the lever and you have a completed round. Perfect for moderate production of handgun ammunition. Deactivate the Auto-Index feature and you can batch reload the longest rifle cartridges. Twist and exchange the turret, snap in a new shell holder, and you're ready to load your next cartridge.

**DESIGNED FOR VERY HIGH PRODUCTION** of handgun cartridges. Add a bullet and pull the lever; other operations are automatic. Select these presses only if you are shooting more than 500 rounds per week.

If loading limited quantities of many different cartridges, a Turret Press is your best choice. Changeover from cartridge to cartridge can become involved on the progressive presses.

COMPATIBLE CARTRIDGES	ROUNDS PER HOUR
All cartridges up to 460 Weatherby Mag	250
<b>Classic Turret Press # 90064</b> PAGE 23	
<b>Value Turret Press # 90932</b> PAGE 22	

COMPATIBLE CARTRIDGES	ROUNDS PER HOUR
32 S&W LONG to 223 Remington	600+
<b>Pro 1000</b> FULL DESCRIPTION PAGE 24	
COMPATIBLE CARTRIDGES	ROUNDS PER HOUR
32 S&W LONG to 30/06	600+
<b>Load-Master</b> FULL DESCRIPTION PAGE 25	

# COMPACT PRESSES



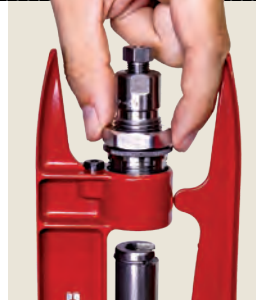
Shown on optional Bench Plate. Order #90251

## Lee Breech Lock Reloader Press

### NOW WITH THE BREECH LOCK SYSTEM

An outstanding value. Exclusive balanced lever that can't drop down to pinch your fingers. Unlimited hand clearance that only a "C" frame can offer. Works equally well with the right or left hand. Even if you already own a press, an extra press is always useful for decapping, bullet seating or bullet sizing.

90045



CHANGE DIES INSTANTLY  
WITH A TWIST OF THE WRIST

### BREECH LOCK BUSHINGS 2-PK

Breech lock bushings fit all Lee Breech Lock presses. Allows instant, accurate die changes.

90600



### LOCK-RING ELIMINATOR

Breech lock quick change bushing with integral lock collar provides unmatched precision and convenience when adjusting dies. Split clamp positively locks die into position. Perfect when using other die brands in your Breech lock press.

90063 2-PACK

## BIG GUN INSPIRED BREECH LOCK QUICK CHANGE

is now standard on most Lee single station presses. Switch dies with a  $\frac{1}{8}$  of a turn rather than fourteen or more turns. Loading with a breech lock equipped press is convenient as a Turret press when loading small quantities of ammunition. Interrupted three-start thread assures dies will return and lock into the exact same position.

The BREECH LOCK SYSTEM includes a lock pin to allow easy initial setup. If cost is more important than convenience, you can leave the Breech Lock bushing locked in the press and screw dies in and out like a conventional press.



## Lee Breech Lock Hand Press

Now with the Lee Breech Lock System! A full size hand held reloading press, yet the tool weighs only 1 $\frac{3}{4}$  pounds and costs so little you will want more than one.

No matter how much equipment you have, it's great to have a portable hand press. No time is wasted mounting a tool to a work bench. When you're finished—just pack it away.

90685

## Breech Lock Hand Press Kit

### THE PERFECT PORTABLE RELOADING PRESS KIT

Begin reloading at once. No wasted time mounting to a work bench. Pack it all in the box when finished. Great for apartment dwellers or loading at the range. Dies not included.

### KIT INCLUDES

BREECH LOCK HAND PRESS

RAM PRIME

POWDER FUNNEL

CASE SIZING LUBE

90180



## Lee Ram Prime

Primes on the press up-stroke for a more sensitive feel. Includes easy to change punches for both large and small primers. Fits all brands of presses. Same tool as supplied with the Hand Press Kit.

90106

# The classic



## The Classic Lee Loader

For more than 55 years, more shooters have chosen the famous Lee Loader for their first reloading tool than any other. They realize it is all they need for good, accurate ammunition. In fact, at one time ammunition loaded with a Lee Loader held a world record listed in the GUINNESS BOOK OF WORLD RECORDS for more than seven years. Millions upon millions of rounds have been reloaded with the famous Lee Loader, and we expect it will continue to be a most popular reloader for many years to come. It's the perfect tool for those who wish to simply try reloading, because it will pay for itself in just an hour or two. Find out for yourself how much fun it is to reload with the Lee Loader. Everything you need to begin loading one caliber and you'll save enough to pay for it in the first hour!

LEE LOADER

### LEE LOADER SIZES

223 REMINGTON	90232
243 WINCHESTER	90235
270 WINCHESTER	90240
7.62X54 RUSSIAN	90243
30/30 WIN (30 REM.)	90244
308 WINCHESTER	90245
30/06 SPRINGFIELD	90248
303 BRITISH	90247
45/70 GOVERNMENT	90264
9mm LUGER	90254
38 SPECIAL	90257
357 MAGNUM	90258
‡44 MAGNUM	90260
‡45 ACP	90262
‡45 COLT	90263

‡ Calibers requiring considerable force for sizing.

## Breech Lock Challenger Press

The "O" frame press by design is the strongest and the most popular style press by far. Large opening and long stroke handles the largest belted magnums with ease. The primer catcher is positive and routes the spent primers directly to the trash can. Priming is a dream with the LEE LEVER PRIME SYSTEM. Best of all, it includes the BREECH LOCK QUICK CHANGE DIE SYSTEM. Change dies instantly with a twist of the wrist; you'll never have to re-adjust your die.

Other features include all steel linkage with adjustable length lever. This same press will cost you more than twice as much from other manufacturers, and that's without all of the Challenger's features.

90588



Shown on optional Bench Plate. Order #90251

PRIMER ARMS



### LOCK-RING ELIMINATOR

Breech lock quick change bushing with integral lock collar provides unmatched precision and convenience when adjusting dies. Split clamp positively locks die into position. Perfect when using other brands of dies in your Breech lock press.

90063 2-PACK



### BREECH LOCK BUSHINGS 2-PACK

Breech lock bushings fit all Lee Breech Lock presses. Allows instant, accurate die changes.

90600



## Lee Safety Prime

Makes priming on the press a delight. Never touch the primers from box to shell. Primer flip tray features a CAD designed flipping surface that instantly rights the primers.

Change primer size in seconds. Primers are dispensed with a satisfying click of the primer feed trigger.



LARGE & SMALL 90997

**NEW**



## Deluxe Challenger Kit

Perfect kit for someone starting out, but wants more than the basics. We have taken the worlds most popular Breech Lock Challenger press and combined it with the best accessories at a price less than what others charge for a "basic kit." Highlights are the New Deluxe Perfect Powder Measure, Auto Bench Prime with shell holder set, Deluxe Quick Trim and a copy of the latest version of Modern Reloading featuring over 36,000 loads for over 170 cartridges. Plus the other case prep tools found in other kits.

**This kit and a set of Lee dies is everything you need to start reloading, and it's all the best products, so you'll never outgrow the kit.**

90080

Shown on optional Bench Plate. Order #90251



## Breech Lock Challenger Kit

Features the same components as the 50th Anniversary Kit, but we have replaced the Safety Prime with the New Auto-Prime and a set of Auto-Prime shell holders. This kit is for those who prefer to prime off the press. (Shown with optional Bench Plate. Order #90251)

90030

# BREECH LOCK CHALLENGER PRESS KITS



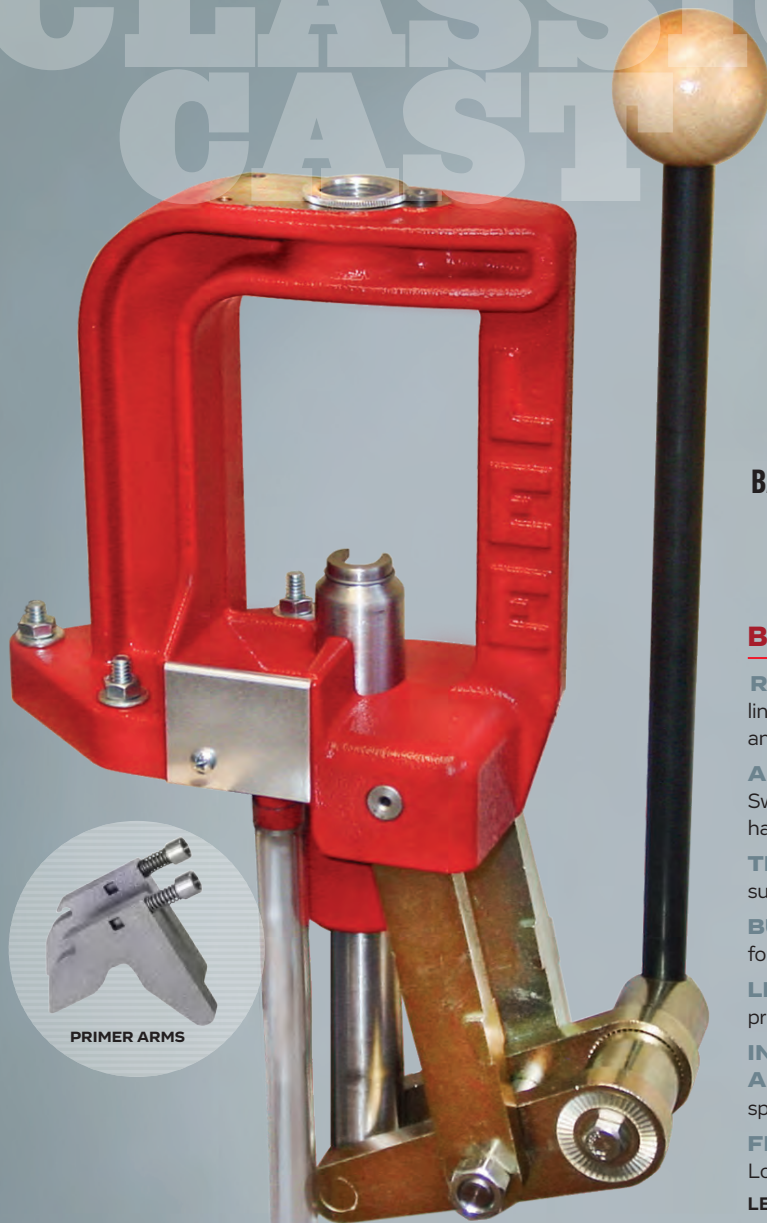
Shown on optional Bench Plate. Order #90251

## 50th Anniversary Kit

A COMPLETE POWDER HANDLING SYSTEM, with the most convenient and repeatable PERFECT POWDER MEASURE, plus the LEE SAFETY SCALE, the most sensitive, safest of all powder scales. Fill your cases with the POWDER FUNNEL. Case Preparation tools include the LEE VALUE TRIM case trimmer to trim your own reloading press (order cartridge specific trim die separately), and a CUTTER & LOCK STUD to trim your cases. Order the correct CASE LENGTH GAUGE for the calibers you'll be loading. The LEE CHAMFER TOOL chamfers the inside and outside of the case mouth, and a tube of premium SZING LUBE is also included. A small and large RIMER POCKET CLEANING TOOL completes the case preparation package. But that's not all! You get the large and small SAFETY PRIME. Prime with push button convenience and is safe with all brands of primers. Never touch the primer from the box to the case.

*Purchased separately*

90050

CLASSIC  
CAST

## RIGID CAST IRON FRAME, CAST AND MACHINED WITH PRIDE IN THE USA

BAKED POWDER FINISH AND ALL STEEL LINKAGE MAKE THE LEE CLASSIC CAST SERIES PRESSES SOME OF THE MOST ATTRACTIVE AND DURABLE PRESSES MADE

### Breech Lock Classic Cast Press

**RIGID CAST IRON CONSTRUCTION** with all steel linkage. Durable powder coated finish with largest opening and the longest stroke in the industry.

**ADJUSTABLE HANDLE** from right to left and length. Swing position is fully adjustable with a 48-tooth ratchet type handle clamp.

**THE INDUSTRY'S LARGEST 1 1/8" DIAMETER RAM** supported by over 12 square inches of ram bearing surface.

**BUILT-IN PRIMER CATCHER** with tube for direct trash disposal.

**LEE LEVER PRIME SYSTEM** features bottom of stroke priming for unmatched sensitivity.

**INCLUDES BOTH LARGE AND SMALL PRIMING ARMS** No need to fumble with tiny guides and springs when changing primer size.

**FRAME MACHINED** to accept Lee quick-change Breech Lock Die bushings. Change dies instantly with a quick 1/8 turn.

LEE BREECH LOCK CLASSIC CAST 90999



PRIMER ARMS



LARGE & SMALL  
SAFETY PRIME  
90997



CHANGE DIES  
INSTANTLY  
WITH A TWIST OF  
THE WRIST

### BREECH LOCK BUSHINGS 2-PACK

Breech lock bushings fit all Lee Breech Lock presses. Allows instant, accurate die changes.

90600



### LOCK-RING ELIMINATOR

Breech lock quick change bushing with integral lock collar provides unmatched precision and convenience when adjusting dies. Split clamp positively locks die into position. Perfect when using other brands of dies in your Breech lock press.

90063 2-PACK



CLASSIC CAST

**Lee Classic Cast Press**

**THE LARGEST OPENING** in the industry and the longest stroke — handle adjustable to provide least travel of any press.

**RIGID CAST IRON CONSTRUCTION** in a classic “O” design for maximum strength. Baked powder coating is durable and makes the Classic Cast a handsome addition to any reloading bench.

**LARGE, FLAT CORED BASE** with 3 mounting holes, mounts solid to any bench.

**ADJUSTABLE HANDLE** is movable from right to left. Start and stop position adjustable with 48-tooth ratchet type handle clamp. In addition, handle length is completely adjustable. Shorten when loading handgun and short rifle cases.

**AUTOMATIC PRIMER ARM** with bottom of stroke priming for best feel. Includes two primer arms for large and small primers. No more fumbling with tiny guides and springs.

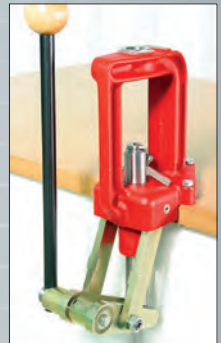
**THE ORIGINAL CLASSIC CAST** designed to work with large series 1¼–12 dies. Includes threaded adapter to accept standard 7⁄8–14 dies.

**LARGE 1½ DIAMETER RAM** drilled completely through to allow spent primer disposal direct to trash can with attached tube. Ram is two-piece to allow installation of the mammoth 50 BMG shell holder. All supported by over 12 sq. inches of ram bearing surface.

**POWERFUL COMPOUND LINKAGE** with positive travel stop prevents press toggle or “cam over.”

**ACCEPTS STANDARD SHELL HOLDERS** ram insert can be rotated to allow primer installation on right or left side.

LEE CLASSIC CAST PRESS 90998



Changes easily for left-handed use.



Spent primers collected and dropped into a flexible plastic tube for easy emptying.

**RELOADING DIES**

**1¼–12 Thread Series Dies**

90902	577/450 Martini-Henry*
90929	577 Snider*
90252	416 Barrett* Shellholder not included
90515	50 BMG Shellholder not included

\*These dies do not include load data

**1¼–12 Thread Series Factory Crimp Dies**

90953	50 BMG
90745	338 Lapua

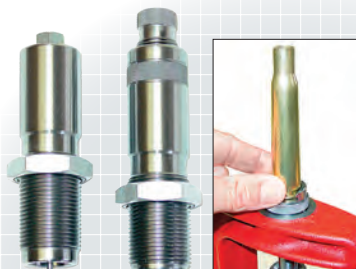
**1¼–12 Thread Series Collet Dies**

90747	50 BMG
90635	338 Lapua



LARGE & SMALL SAFETY PRIME 90997

CLASSIC CAST  
50 BMG  
PRESS KIT



50 BMG DIE SET 1¼–12 THREAD 90515



50 BMG RAM PRIME TOOL 90901



50 BMG FACTORY CRIMP DIE 90953

50 BMG SHELL HOLDER 90903

**Lee Classic Cast 50 Caliber BMG Press Kit**

At last, an affordable way to reload the monster 50 BMG. Kit includes everything you need to start reloading the 50—Lee Classic Cast press, set of 50 BMG dies, shell holder, ram prime tool and tube of case sizing lube.

Kit also includes shell holder insert, large and small primer arms and die reducer bushing to accept standard 7⁄8–14 dies so you can load all your smaller cartridges. All this for less than what others charge for dies alone.

**50 CALIBER BMG PRESS KIT**

90859



## Lee Classic Turret Press

The sturdy iron base shows its Classic Cast roots. The long stroke allows rifle cases over three inches long to be loaded using the automatic index. Deactivate the Auto-Index and cases over 4 inches can be loaded. The rigid cast iron frame supports the ram with over 12 square inches of area. The industry's largest ram is drilled completely through to dispose primers in an attached clear PVC tube. Every primer is caught — guaranteed.

Instant change turrets are the same as the famous Lee Turret Press. The Classic Turret uses the LEE LEVER PRIME SYSTEM · LPS and the optional Lee Safety Prime tool makes priming on the press a delight. If you like to own the best, then treat yourself to the Lee Classic Turret. The finest reloading system made.  
LEE CLASSIC TURRET PRESS 90064

Shown on optional Bench Plate. Order #90251



### LEE SAFETY PRIME

Makes priming on the press a delight. Never touch the primers from box to shell. Primer flip tray features a CAD designed flipping surface that instantly rights the primers. Change primer size in seconds. Primers are dispensed with a satisfying click of the primer feed trigger.

LARGE & SMALL PRIMER FEEDER  
90997



POWDER MEASURE  
RISER  
FOR SAFETY PRIME  
90041

See page 33



GET AN ADDITIONAL  
TURRET FOR YOUR  
LEE PRESSES

EXTRA TURRET, 4 HOLE  
90269

## A MACHINE THAT DOES IT ALL

This press has all the features of the award-winning Turret Press with the quality touches that make this the finest, most convenient press to own. The Classic Turret features the solid steel linkage of the Lee Classic Cast. Your first stroke of the hardwood gripped lever will convince you this is one solid, silky smooth press!



Spent primers collected and dropped into a flexible plastic tube for easy emptying.

## CLASSIC TURRET PRESS KIT

### Classic Turret Press Kit

**THIS KIT AND A SET OF LEE DIES is everything you need to begin reloading pistol ammo.**

The Classic Turret Press is fast and convenient when loading handgun cartridges, with rates in excess of 250 rounds per hour possible.

The kit includes the AUTO-DRUM powder measure and powder measure riser, perfect for all handgun and rifle cartridges. Large and Small SAFETY PRIME are included making on press priming an ease. INSTANT CHANGE TURRET makes changing calibers a snap. Deactivate the auto-index and batch load the longest and largest rifle cartridges.

Complementing your press kit are the case conditioning tools to prepare your brass for loading. Includes CUTTER, LOCK STUD, CHAMFER TOOL, small and large PRIMER POCKET CLEANER, and a tube of LEE CASE SIZING LUBE. Complete it with the cartridge specific CASE LENGTH GAUGE. Verify your loads with the included LEE SAFETY POWDER SCALE.

Completing the kit is *MODERN RELOADING SECOND EDITION*, 2016 revision with all new load data covering over 170 cartridges with more than 36,000 loads.

90304



Shown on optional Bench Plate. Order #90251

# VALUE TURRET PRESS

EQUIPPED WITH THE **LEE LEVER PRIME SYSTEM™**

## Value Turret Press

Proven design with compound leverage. No spring in this turret design. The turret is locked into a solid steel ring with big rifle bolt type lugs. Exclusive design puts the lugs on the circumference so there can be no tipping. The linkage is so powerful that the largest magnum cases are sized with ease. Effort required is so small that the usual heavy bench is not essential. The Lee Turret Press has built-in primer catcher and a comfortable roller handle. Even if you do not need all of these features, why pay more for anything less?  
**4 HOLE TURRET PRESS W/AUTO INDEX 90932**



Shown on optional Bench Plate.  
Order #90251



Power and strength to spare, plus unequalled convenience. The Lee Turret Press is suitable for loading all rifle and pistol cases, but really shines when loading large quantities of handgun ammunition. This is the most convenient press made.

Only a true progressive press is faster. Includes the LEE LEVER PRIME SYSTEM with large and small primer arms. Features lift out convenience. Works with the LEE SAFETY PRIME.

## Lee Safety Prime

Makes priming on the press a delight. Never touch the primers from box to shell. Primer flip tray features a CAD designed flipping surface that instantly rights the primers. Change primer size in seconds. Primers are dispensed with a satisfying click of the primer feed trigger.

90997



**POWDER MEASURE RISER FOR SAFETY PRIME**  
90041  
See page 33



**GET AN ADDITIONAL TURRET FOR YOUR LEE PRESSES**

**EXTRA TURRET, 4 HOLE 90269**

## VALUE TURRET PRESS KIT

### Lee Value Turret Press Kit

The Value Turret Press, along with the Auto-Disk Powder Measure, produces top quality pistol ammo in a hurry.

A finished round with a few pulls of the lever. Disconnect the AUTO-INDEX and it's large enough to handle monster belted magnum rifle cases. When it's time to change calibers, simply lock in a new turret and begin reloading in seconds. In addition to the Turret Press and AUTO DISK POWDER MEASURE, the kit includes the LEE SAFETY SCALE, unmatched for sensitivity, a PRIMER POCKET CLEANER, CUTTER AND LOCK STUD to trim the cases and a CHAMFER TOOL to deburr cases after trimming. Complete the case conditioning tools with the cartridge specific CASE LENGTH GAUGE.

A set of Lee Dies is all that is required to complete this reloading outfit. And all of this at a price that will allow you to pay for your investment in a matter of hours.

**4 HOLE TURRET W/AUTO INDEX 90928**



Shown on optional Bench Plate.  
Order #90251

# FULLY AUTOMATIC

## Lee Pro 1000

Add a bullet and pull the lever; all other operations are automatic. One loaded cartridge with each pull of the lever. Every operation is automatic. Primers, like the powder, are fed only if a case is present. No wasted primers or spilled powder. Alternate loading sequence lets you load only one case at a time. Makes learning easy for the first time user and great for fine adjustments or experimenting. You can start reloading good ammunition minutes after the press is bolted down. Change calibers in just three minutes.

MAXIMUM CARTRIDGE LENGTH 2 5/16"

32 S&W LONG and 32 H&R MAG	90639*
380 AUTO	90641*
38 SPECIAL and 357 MAGNUM	90636
38 AUTO and 38 SUPER	90035
9mm LUGER	90640
‡ 40 S&W	90682
41 MAGNUM	90642
44 SPECIAL and 44 MAGNUM	90634
45 ACP	90638
45 COLT	90643
223	90633*

Includes Short Charging Die. Not available in carbide

\*Uses AUTO-DRUM POWDER MEASURE

‡ 10mm AUTO can be reloaded. Purchase LARGE TROUGH #TR2164B, PIN #TR2436 and 10mm load data #CD2076

## LEE PRO 1000 COMPLETE, READY TO RELOAD

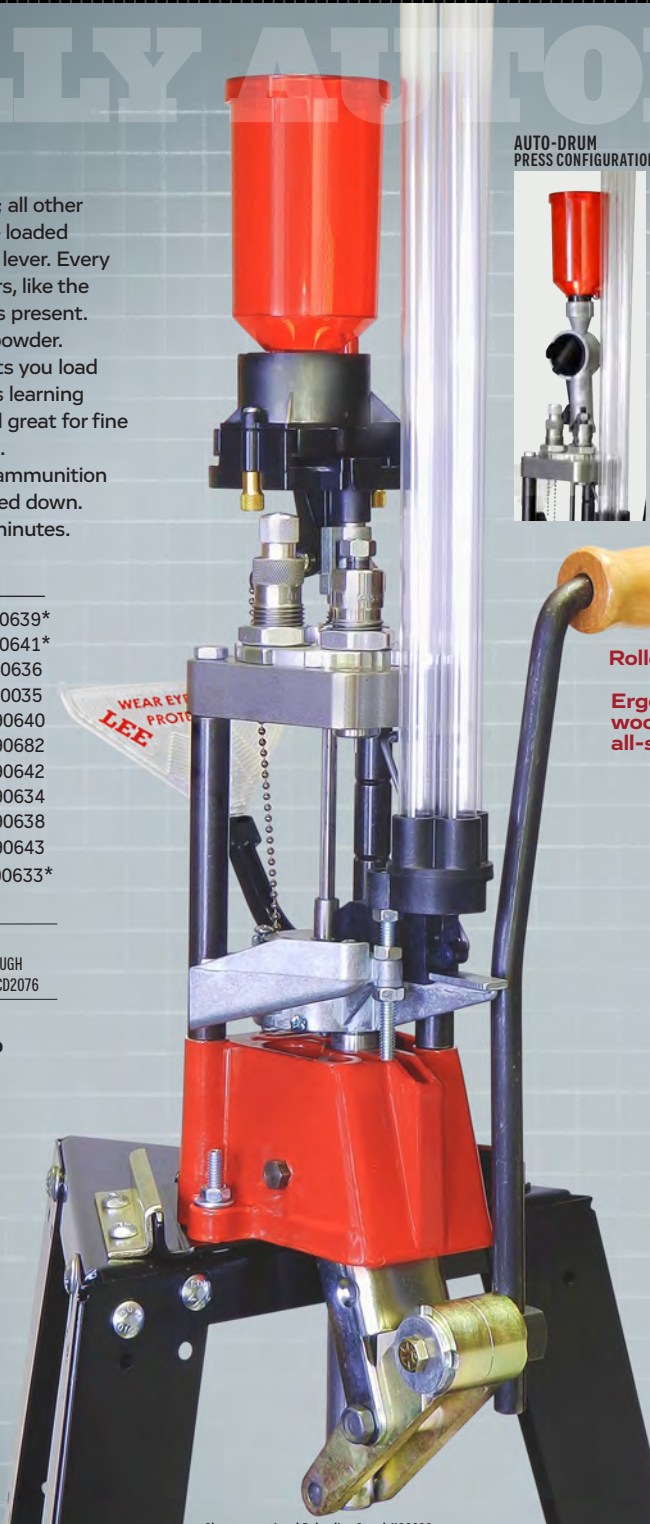
Safe with CCI or REMINGTON brand primers only



**TURRET**  
90497



**FOLDING PRIMER TRAY 2-PACK**  
90606



Shown on optional Reloading Stand #90688

## AUTO-DRUM PRESS CONFIGURATION



**SHELL PLATES**

SHELL PLATE #1	90651	38 SPL, 357 MAG, etc.
SHELL PLATE #2	90652	45 ACP, 45 GAP etc.
SHELL PLATE #3	90664	45 WINCHESTER MAGNUM
SHELL PLATE #4	90653	222, 223, 380 AUTO, 32 S&W LONG 32 H&R MAGNUM
SHELL PLATE #6	90976	32/20, 25/20
SHELL PLATE #7	90655	30M1 CARBINE, 32 AUTO
SHELL PLATE #9	90656	41 MAGNUM
SHELL PLATE #11	90657	44 SPECIAL, 44 MAG, 45 COLT
SHELL PLATE #12	90666	7.62x39, PPC, 220 RUSSIAN
SHELL PLATE #13	90665	45 AUTO RIM
SHELL PLATE #14	90065	38/40, 44/40, 45 COLT, 460 S&W
SHELL PLATE #19	90669	40 S&W, 10mm AUTO, 9mm LUGER 38 SUPER, 38 AUTO, 41 AE

## Roller handle

Ergonomic wood grip and all-steel linkage



If you order Shell Plates to convert to another caliber with a different primer size, be sure to order the Pro 1000 Primer Attachment.

**PRO 1000 PRIMER ATTACHMENT**

90660



## SHELL PLATE CARRIER

To change calibers, the entire Shell Plate Carrier can be replaced. Each unit comes complete with Shell Plate, Primer Feed, Case Ejector, Auto-Index and spare parts.

#1 Carrier	90644	38 SPL, 357 MAG, etc
#2 Carrier	90645	45 ACP, etc.
#4 Carrier	90646	222, 223, 380 AUTO, 32S&W LONG, 32H&R MAG
#7 Carrier	90648	30 M1 CARBINE, 32 AUTO
#11 Carrier	90650	44 SPECIAL, 44 MAGNUM, 45 COLT
#19 Carrier	90683	40S&W, 9mm LUGER, 38 SUPER, 38 AUTO, 41AE
#19L Carrier	90662	10mm AUTO

## ACCESSORIES FOR PRO 1000 AND LOAD

### CASE FEEDER

**LARGE CASE FEEDER** 90658  
38 SPECIAL • 357 MAGNUM • 41 MAGNUM  
44 SPECIAL • 44 MAGNUM • 45 ACP  
45 COLT • 10mm AUTO • 7.62x39 RUSSIAN  
40 S&W uses the Large Case Feeder with a small slider.

**SMALL CASE FEEDER** 90659  
9mm LUGER • 380 AUTO • 32 AUTO  
32 S&W LONG • 32 H&R MAGNUM • 38 AUTO  
38 SUPER

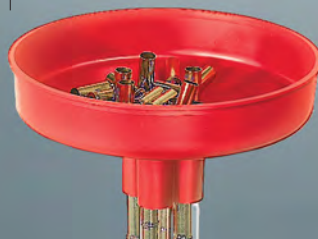
**RIFLE CASE FEEDER** 90663  
222 • 223 • 30 M1

**EXTRA CASE FEEDER TUBES 7-PK.** 90661

### CASE COLLATOR

Fills all four tubes in just ten seconds. For the Pro 1000 or Load-Master

90667



### BULLET FEED KIT

The bullet feeder designed to directly fit the Pro 1000 and Load-Master. Automatically feeds bullets into the mouth of the seating die. Aligns bullets more accurately than possible by hand. Increases the cyclic rate from 50 to 100%.

Order from chart at right.



# FINEST RELOADER MADE

## Lee Load-Master

**A massive press with advanced features.**

Ram is 1 1/4 inches in diameter.

Stroke and clearance sufficient for largest magnum rifle cases.

Load rifle and pistol rounds with equal ease.

Load progressively or singly without spilled powder or components.

Five stations so you can factory crimp and post size.

Accepts all popular brands of dies • 7/8 x 14

Automatic indexing with a wedge lock mechanism that will actually hold a ton.

Positive and foolproof priming system that is easy and fast to fill.

Removable turret.

Change calibers in seconds.

Automatic 4 tube case feeder (pistol calibers)

Loaded round ejector and case catcher.

Quick change shell plate. No tools required.

Grease fittings, along with hard chrome-plated ram, insure a lifetime of service for even the commercial reloader.

Easy to empty primer catcher guaranteed to catch every primer.

This press will convince you that Lee is the quality leader. Every part of this tool was designed to be strong, long lasting, rust-resistant and user friendly. This machine is designed for a life-time of the hardest use.



### PRECISION 5-HOLE TURRET

with 20 locking lugs takes just seconds to change. 90079



FOLDING PRIMER TRAY 2-PACK 90606



Shown on optional Reloading Stand #90688

### AUTO-DRUM PRESS CONFIGURATION



### SHELL PLATE

#1s	90907	38 Spl, 357 Mag., etc.
#2L	90908	45 ACP, 30/06, 308, etc., 6.5 Creedmoor
#3L	90909	30/30, 7x30 Waters, etc., 7.5 Swiss
#4s	90910	223, 222, etc., 380 ACP
#4A	90059	32 S&W Long, 32 H&R Mag., etc.
#5L	90911	Belted Magnums 300 Mag 303 British & 30/40 Krag, etc, 7mm WSM
#6s	90912	32/20, 25/20 etc.
#7s	90913	30 M1 Carbine, 32 ACP
#8L	90914	45/70, 348 Win, 416 Rigby
#9L	90915	41 Magnum
#10L	90916	220 Swift, 6.5 Jap, 458 Socom
#11L	90917	44 Mag., 44 Spl., 45 Colt
#12L	90918	7.62x39, 6mm PPC, 22 PPC, etc.
#14L	90919	44/40, 38/40, 45 Colt, 460 S&W
#16L	90612	500 S&W, 7.62x54 R
#19s	90920	9mm Luger, 40 S&W, 38 Super, etc.
#19L	90068	10mm Auto
#20	90884	22 Hornet

Check shell holder chart on page 30 for further listings.



Bin included Order additional #90687

### EXPLOSION SHIELD INCLUDED 90363

Necessary if using primers other than CCI or Remington brand

### CALIBERS equipped with Reloading Dies, Pro Auto-Disk Powder Measure & Case Feeder

223 Remington	90922*
32 S&W Long • 32 H&R Mag	90935*
9mm Luger	90936
380 Auto	90937*
38 Special and 357 Magnum	90938
40 S&W ‡	90940
44 Special and 44 Magnum	90943
45 ACP	90945
45 Colt ( will load 454 Casull )	90946

\*Uses AUTO-DRUM POWDER MEASURE

‡ 10mm AUTO can be reloaded. Purchase LARGE PRIMER FEEDER #90077 and 10mm load data #CD2076

LARGE PRIMER FEEDER 90077

SMALL PRIMER FEEDER 90075

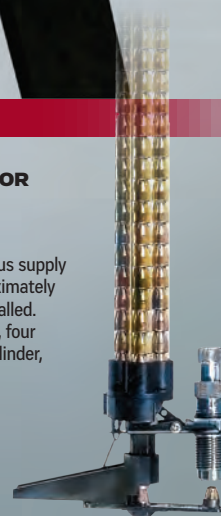
**BULLET FEED KIT** is complete for one bullet diameter and range of length. To convert to another caliber or bullet length, select appropriate FEED DIE AND FINGER.

Feed kits complete	Description	Feed die and fingers
90892	30 & 32 cal Bullets up to .60 long	90885
90893	9mm through .365 diameter up to .46 long	90886
90894	9mm through .365 diameter .46 to .60 long	90887
90895	9mm through .365 diameter .60 to .75 long	90888
90896	40 cal through .44 cal up to .65 long	90889
90897	40 cal through .44 cal .65 to .80 long	90890
90898	45 cal bullets .50 to .67 long	90891

### MULTI-TUBE ADAPTER FOR BULLET FEED KIT

Four tube magazine keeps Lee Bullet Feeder fed with a continuous supply of bullets. Each tube holds approximately 25 bullets. Quickly and easily installed. Includes large and small adapters, four large and small feed tubes and cylinder, plate assembly.

90280



## MASTER PASSES

# AUTO BENCH PRIME

## THE EASIEST, MOST CONVENIENT BENCH

MOUNTED priming tool ever. Symmetrical design allows effortless right or left hand operation. Comfortable lever with just the right amount of mechanical advantage effortlessly seats even the most difficult primers with just finger pressure. Perfect mechanical advantage to feel the primer seating completely home into the primer pocket.

Includes priming assemblies for large and small primers. Made of a water clear tough polymer that allows you to monitor the primers passage from the tray to the primer pocket. Change primer size or shell holder in seconds.

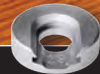
Includes the new folding tray—go from box to priming in seconds. Tray has a built-in primer flipping feature allowing direct filling from today's large primer boxes.

The tool mounting holes are spaced for the Lee Bench Plate system (#90251) or can be mounted directly to your workbench.

Uses special, but inexpensive priming tool shell holders, so there's no need to endlessly swap press shell holders to prime.

### Auto Bench Prime

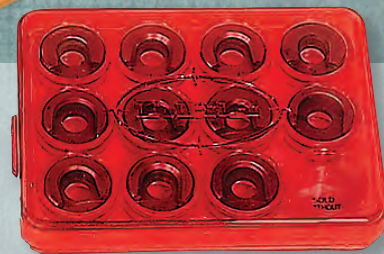
90700



SHELL  
HOLDER

FOR  
NEW AUTO-PRIME  
ERGO PRIME  
AUTO BENCH PRIME

#1	90201
#2	90202
#3	90203
#4	90204
#5	90205
#6	90206
#7	90207
#8	90208
#9	90209
#10	90210
#11	90211
#12	90212
#13	90213
#14	90272
#15	90017
#16	90200
#17	N/A
#18	N/A
#19	90023
#20	90020
#21	90031
#24	SH2110
#25	SH2426



PACKED IN A LIFETIME PLASTIC BOX

### Set of Shellholders

Eleven of the most popular sizes fit over 115 different cartridges. The chart ( at right ) is included with each shell holder set.

# 1 • 2 • 3 • 4 • 5 • 7 • 8 • 9 • 10 • 11 • 19

RED STORAGE BOX ONLY 90196

RED STORAGE BOX 90198

with 11 Shellholders for LEE NEW AUTO PRIME, ERGO PRIME  
AND AUTO BENCH PRIME

SHELLHOLDERS

## FASTEST, MOST CONVENIENT HAND HELD PRIMING TOOLS MADE

INCLUDES TRAY SIZED TO FIT TODAY'S LARGER PRIMER BOXES

**2 great ways to prime**

### New Auto-Prime

The original and world's most popular hand-held priming tool. Fast and economical hand held priming with unmatched feel and accuracy.

90230



### Lee Ergo-Prime

Premium hand held priming tool with all the features of the world's most popular Auto-Prime, with a new ERGO nomic design. The Ergo Prime's highly sculpted body fits your hand perfectly, along with a long smoothly contoured finger lever that easily installs the tightest primers. Fingertip operation provides unmatched sensitivity and comfort, especially for older hands. Change primer size in an instant—no tools or disassembly required, simply remove shell holder and swap primer assembly. Powder coated metal body and polished chrome plated lever makes the Ergo-Prime not only the most comfortable, but also the best looking tool made.

90250



## New, removable tray

PATENT PENDING

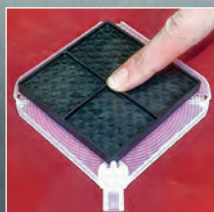
Tray's built-in flipping surface quickly rights and orients primers—go from box to priming in seconds. Patented elevator pin safely isolates a single primer for priming. Allows most primer brands and types to be safely tray fed.

The convenient hinged cover allows you to individually feed primers if restricted by the primer manufacturer.

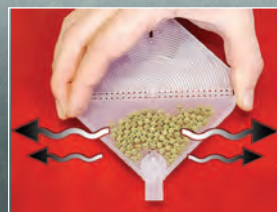
Both priming tools use special, but inexpensive shell holders so there's no need to endlessly swap press shell holders to prime. See listing below.



Unfold tray and place on top of box of 100 primers



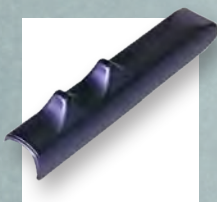
Flip tray over to deposit the primers.



Shake tray to upright all the primers. Fold and close cover.



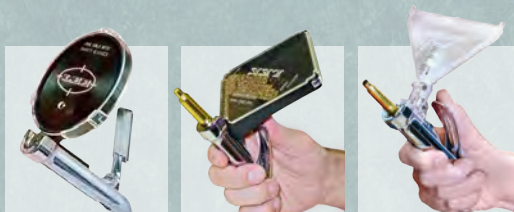
Slide the flow control to LOCK.



### Auto-Prime Comfort Grip

Black comfort grip for Auto-Prime, Auto-Prime XR, and New Auto-Prime owners.

90042



### WORKS WITH THESE TOOLS

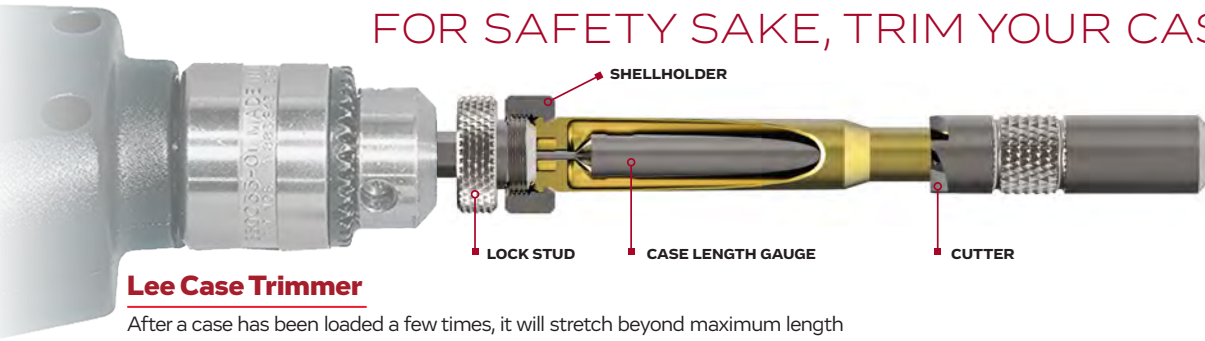


### Folding Primer Tray

TWO PACK  
90606

HOLDER	RIFLE	HOLDER	RIFLE	HOLDER	RIFLE	HOLDER	RIFLE	HOLDER	PISTOL
20	17 Hornet	2	250 Savage	16	7.62x54 Russian	8	348 Win.	4	32 S&W
4	17 Remington	3	25/35	3	30 Herrett	2	35 Remington	4	32 S&W Long
4	204 Ruger	2	257 Roberts	3	30/30 Win. (30 WCF)	5	35 Winchester	7	32 ACP
4	22 TCM	5	257 Weatherby	2	300 Savage	2	35 Whelen	4	32 Colt N.P.
20	22 Hornet	5	303/25	16	30/378	5	350 Rem. Mag.	4	380 Auto
20	22 K Hornet	2	6.5mm 06	21	30 Remington	3	356 Winchester	19	9mm LUGER
3	22 Savage	2	6.5mm x 57	2	308 Win. (7.62 NATO)	2	358 Winchester	1	38 S&W
2	22 BR	3	6.5 x 55 Mauser	4	300 AAC Blackout	5	358 Norma Magnum	1	38 Colt N.P.
6	218 Bee	10	6.5 Jap	5	30/40 Krag (30 U.S.)	3	375 Winchester	19	38 Super Auto
12	22 PPC	5	6.5 Rem. Magnum	2	30/06 Springfield	5	375 H & H	19	38 ACP
3	219 Zipper	2	6.5 Carcano	5	300 H & H	5	375 Weatherby	1	38 Short Colt
10	220 Swift	12	6.5 Grendel	5	300 Weatherby	5	375 Ultra Magnum	1	38 Long Colt
4	221 Fireball	5	264 Win. Magnum	5	300 Win. Magnum	5	375 Ruger	1	38 Special - 357 Mag
4	222 Remington	21	6.8 SPC	5	300 Ultra Magnum	14	38/40 Win.	19	357 Sig
4	222 Rem. Magnum	2	270 Winchester	5	300 Win S Magnum	3	38/55 Winchester	2	357 Auto Magnum
4	223 (5.56mm)	5	270 Weatherby	5	308 Norma Magnum	8	40/82 Winchester	19	40 S&W - 10mm Auto
5	223 WSSM	5	270 Win S Mag	5	303 British	5	416 Remington	1	41 Long Colt
2	224 Clark (22/257)	2	280 Remington	2	7.7 Japanese	25	416 Rigby	19	41 Action Express
10	225 Winchester	2	7mm/08	3	32 Win. Spc'l	18	43 Mauser	9	41 Magnum
2	22/250	2	7mm BR	3	32 Win. S.L.	17	43 Spanish	11	44 S&W Spl - 44 Mag
2	240 Weatherby	4	7mm TCU	6	32/20 (32 W.C.F.)	14	44/40	11	44 S&W Russian
2	243 Win.	3	7 x 30 Waters	3	32/40 Winchester	11	444 Marlin	2	44 Auto Mag.
5	243 WSSM	2	7 x 57mm Mauser	2	8 x 57 Mauser	8	45/70 Gov't	2	45 Auto
2	6mm Remington	5	7 x 61 Sharpe & Hart	2	8mm 06	5	458 Win. Magnum	11x14	45 Colt
2	244 Remington	5	7mm Rem. Magnum	2	8mm Man. Schoe.	14		14	45 Schofield
2	6mm Int'l	5	7mm Win S Mag	5	8mm Rem. Magnum	11		11	454 Casull
2	6mm/284	5	7mm Weatherby	17	8mm Lebel	14		14	460 S&W
2	6mm/06	5	7mm Ultra Mag	16	8x56R Hungarian	5		5	455 Webley
12	6 PPC	2	284 Winchester	8	33 Winchester	13		13	45 Auto Rim
4	6 x 47 (6mm/222M)	3	7.5mm Schmidt-Rubin	25	338 Lapua	3		3	45 Win. Magnum
2	25/284	7	30 M 1 Carbine	5	338 Win. Magnum	5x16		5x16	480 Ruger
2	25/06	3	7.65x53 Arg. Mauser	5	338 Ultra Magnum	5		5	475 Linebaugh
6	25/20 Winchester	12	7.62mm x 39	5	340 Weatherby	4		4	500 S&W

# FOR SAFETY SAKE, TRIM YOUR CASES



The simplest way to check the case and trim to the correct safe length is with a Lee Case Trimmer.

## Lee Case Trimmer

After a case has been loaded a few times, it will stretch beyond maximum length and must be trimmed. There is no better system to check and trim cases than with the LEE CASE LENGTH GAUGE and CUTTER. You don't need an expensive caliper to set length and never waste even a single case setting up with the cut and try system common to all other brands. The piloted cutter assures the case mouths are absolutely square and true to the case neck. Best of all, the fixed length design assures it will never go out of adjustment.

The CUTTER and LOCK STUD works for all calibers. You will need only one. The CASE LENGTH GAUGE (PILOT) and SHELL HOLDER must be ordered as CASE LENGTH GAUGE and SHELL HOLDER for each caliber— see size listing at right. You can trim cases by hand, use an electric drill or the LEE ZIP TRIM.



Case Length Gauge CARTRIDGE

GAUGE & SHELLHOLDER

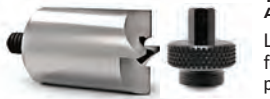
Case Length Gauge CARTRIDGE

GAUGE & SHELLHOLDER

5.7 x 28 FN	90219	300 H&H or Ultra Mag	90141
22 Hornet	90111	300 Winchester Magnum	90142
218 Bee	90225	300 Weatherby Magnum	90143
221 Fireball	90112	303 British	90144
222 Remington	90113	32/20 W.C.F.	90146
223 Remington	90114	7.7 Japanese	90115
223 WSSM	90673	8x56 Aust-Hung Mannlicher	90589
22/250	90116	8 x 57 Mauser	90148
220 Swift	90118	325 WSM	90222
243 Winchester	90119	338 Federal	90218
243 WSSM	90389	338 Lapua	90462
6mm Rem (244 Rem.)	90120	338 Winchester Magnum	90149
25/20 W.C.F.	90121	35 Remington	90150
25 WSSM	90221	35 Whelen	90972
250 Savage (250/3000)	90122	375 Winchester	90165
257 Roberts	90123	375 H&H or Ultra Mag	90164
25/06 Remington	90124	444 Marlin	90151
6.5 Carcano	90043	450 Marlin	90554
6.5 x 55 Mauser	90126	45/70 Government	90152
6.5 x 284	90223	458 Winchester Magnum	90971
6.5 Creedmoor	90814	32 Smith & Wesson Long	90169
260 Remington	90993	32 Winchester Special	90491
6.8 SPC	90189	9mm Makarov	90684
270 Winchester	90128	9mm Luger	90153
270 Winchester Short Mag	90117	38 Super	90217
284 Winchester	90129	380 Auto	90155
7 x 57 Mauser	90130	38 Smith & Wesson	90156
7mm/08	90167	38 Special	90157
7mm Express/280 Rem.	90166	38-55	90994
7mm Remington Magnum	90131	357 Magnum	90158
7mm Win Short Mag	90314	40 S & W	90154
7 x 64 Brenneke	90236	10mm Auto	90127
7.5 Swiss (Schmidt-Rubin)	90132	41 Magnum	90159
7.5 x 54 MAS	90051	44/40	90168
7.62 x 39 Russian	90133	44 Special	90160
7.62 x 54 Russian	90147	44 Magnum	90161
7.65 Mauser (Belgian-Arg)	90134	45 ACP	90162
30 M1 Carbine	90135	45 Colt	90163
30/30 Winchester	90136	454 Casull	90992
30/40 Krag	90137	460 S & W	90220
300 Savage	90138	480 Ruger	Requires Large Cutter 90018
300 AAC Blackout	90443	500 S & W	Requires Large Cutter 90019
300 Winchester Short Mag	90034	50 BMG	Requires Large Cutter 90010
308 Winchester	90139		
30/06 Springfield	90140		



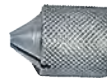
**CUTTER AND LOCK STUD 90110**  
**LARGE CUTTER & LOCK STUD 90401**  
For .475 and larger cases. Can be used on any case.



**THREADED LARGE CUTTER AND LOCK STUD 90468**  
Large cutter with 8-32 thread shank for use on popular powered case preparation centers.



**CUTTER ONLY WITH BALL GRIP 90275**



**CHAMFER TOOL** Must be used after Case Trimming. Unique design cuts fast without chatter. One turn does the job. Chamfers and deburrs inside and outside of case necks. Can also be used to remove the crimp from primer pockets of G.I. brass. Works better than tools costing several times as much.

90109

**PRIMER POCKET CLEANER** Double ended design cleans both large and small primer pockets. Primers can be fully seated for better accuracy and safety. Costs so little and works so well, no reloader can afford to be without one.

90101

**CASE CONDITIONING KIT** Includes cutter and lock stud, chamfer tool and primer pocket cleaner.

90950



## Zip Trim Power Head

The Zip Trim rotates your case like a lathe. While your case is mounted, you can quickly trim, chamfer and polish your case. The Zip Trim's hardened steel spindle accepts the case length gauge shell holder or has two permanent mounting lugs and a socket to accept a "C" clamp for a completely portable set-up.

90899

## 3 JAW CHUCK

Works with any case from 25 ACP to the largest belted magnums. Three hardened steel jaws gently center the case while the spindle locks the case head. Cases are installed and removed with a fraction of a turn. For use with Spinner Stud (90607) or Zip Trim (90899)

90608



## CASE SPINNER STUD

Optional case spinner spindle with drill shank for use with the 3 Jaw Chuck, turns any electric drill into a high speed case polisher/lathe. Also works great to hold cases for neck turning or trimming.

90607



Polishing the cases with steel wool or plastic scouring pad is so much faster than case tumbling. No time is required separating the cleaning media from cases, so no worry of the media sticking to the inside of your cases and no digging the media out of the flash hole.

**:03** Trim case using the Lee Case Trimmer

**:03** Chamfer the case inside and out

**:06** Polish case with steel wool or "scotch-brite"

**:12 seconds to a finished case**

# QUICK TRIM

Trim brass to the correct length while chamfering the case mouth

## Lee Deluxe Quick Trim Case Trimmer

The Deluxe Quick Trim Case Trimmer quickly and precisely trims your brass to the correct length at the same time it chamfers the inside and outside of the case mouth. No calipers, measurement or adjustment required. Simply install the appropriate quick trim die in your press and start trimming. A click adjustable stop allows trim length adjustment in .001 of an inch increments. Allows the user to shorten case to a uniform shorter length than standard, reducing trimming frequency. Includes snap on chip catcher.

90437

### LEE VALUE TRIM

90386

Same quick trimming and click adjustability as the deluxe version, but doesn't include the inside/outside chamfer blades and we skipped the fancy chrome plating.

### DELUXE CUTTER ASSEMBLY

90355

Update your Value Trim adding automatic case chamfering or use to replace a dulled cutter.



RIFLE CARTRIDGE	QUICK TRIM DIE BODY
17 Hornet	90611
17 Rem	90435
204 Ruger	90439
22 Hornet	90354
222 Remington	90340
223 Remington	90179
22/250	90284
243 Winchester	90320
6mm Remington (244 Rem.)	90434
25/06 Remington	90334
6.5 x 55 Mauser	90337
6.5 Creedmoor	90812
260 Remington	90399
6.8 SPC	90397
270 Winchester	90229
270 Winchester Short Mag	90393
7 x 57 Mauser	90489
7mm/08	90343
7mm Express/280 Rem.	90412
7mm Remington Magnum	90297

RIFLE CARTRIDGE	QUICK TRIM DIE BODY
7.5 Swiss (Schmidt-Rubin)	90419
7.62 x 39 Russian	90345
7.62 x 54 Russian	90342
30 M1 Carbine	90365
30/30 Winchester	90249
300 AAC Blackout	90689
300 Winchester Short Mag	90484
308 Winchester	90231
30/06 Springfield	90291
300 H&H	90407
300 Winchester Magnum	90441
300 Weatherby Magnum	90408
303 British	90325
8 x 57 Mauser	90347
338 Winchester Magnum	90391
35 Remington	90403
9.3 x 62 Mauser	90614
375 Ruger	90613
375 H&H	90395
45/70 Government	90458



PISTOL CARTRIDGE	QUICK TRIM DIE BODY
9mm Makarov	90181
9mm Luger	90032
380 Auto	90025
38 Special	90085
357 Magnum	90088
40 S&W	90033
10mm Auto	90193
41 Magnum	90226
44 Special	90107
44 Magnum	90125
45 ACP	90073
45 Colt	90145
454 Casull	90174
500 S&W	90178

## The ultimate in case trimming, speed and convenience



### Deluxe Power Quick Trim

Trim and chamfer in a matter of seconds. Hex shank snaps in to cordless screwdriver or drill (sold separately). Includes power Quick-Trim adapter, chip catcher and deluxe cutter assembly. To complete your trimming setup, order cartridge specific pistol or rifle Quick Trim die from list above.

90670

### Power Quick Trim Stud

#### MOTORIZED YOUR QUICK TRIM

The Power Quick Trim adapter stud enable you to motorize your Value or Deluxe Quick Trim. Hex shank snaps in to any inexpensive cordless screwdriver (sold separately). This tool also requires a cartridge specific pistol or rifle Quick Trim die.



90740

Cordless screwdriver pictured is not included.



BULGE BUSTER KIT shown mounted to Breech Lock Reloader Press (90045). Sold separately, pg. 18

**Lee Bulge Buster Kit**

Assure your mixed brass is bulge free with the Bulge Buster Kit and appropriate Lee Carbide Factory Crimp Die. This push through die adapter will quickly remove the annoying bulge rings that shell holder constrained dies simply can't reach. The Bulge Buster Kit includes extension sleeve, push through punch, catch container and complete instructions. And it's fast — you can reprocess your cases as quickly as you can handle them.

**BULGE BUSTER KIT 90487**  
CARBIDE FACTORY CRIMP DIES, SEE PAGE 8

Utilize all your brass by removing annoying bulge rings

With the Lee Factory Crimp Die, the Bulge Buster will repair all these rimless cases

90867	380 ACP
90862	10 mm
90862	40 S&W
90416	41 AE
90864	45 ACP
90864	45 GAP
90864	45 WIN MAG

Catch Container



Push through Punch Extension Sleeve

# Bulge Buster Kit



**DECAPPER & BASE**

Easily removes crimped in primers from military cases. Guaranteed unbreakable.

22 CALIBER 90103  
30 CALIBER 90102

**DECAPPING DIE**

An absolute must for those who clean cases before reloading. Cases need not be clean nor lubed when using this die. Tough, almost unbreakable decapper easily removes crimped in primers. Fits cases up to .560" in diameter and up to 3.125" long.

90292

REPLACEMENT DECAPPER 90783



**UNIVERSAL CASE EXPANDING DIE**

Gently flares the case mouth to accept cast bullets without shaving. Works great to prevent damaging the moly and low friction coatings found on today's high performance jacketed bullets. Includes neck plugs for .22 cal through .45 cal. Works on everything from the 22 Hornet to the largest Ultra Mag.

90798

# SHELLHOLDERS

SHELL HOLDER	FOR NEW AUTO-PRIME ERGO PRIME BENCH PRIME	FOR PRESSES
#1	90201	90518
#2	90202	90519
#3	90203	90520
#4	90204	90521
#5	90205	90522
#6	90206	90523
#7	90207	90524
#8	90208	90525
#9	90209	90526
#10	90210	90527
#11	90211	90528
#12	90212	90529
#13	90213	90199
#14	90272	90001
#15	90017	90002
#16	90200	90003
#17	N/A	SD2827
#18	N/A	SD2980
#19	90023	90004
#20	90020	SD3590
#21	90031	90599
#22	N/A	SD2396
#23	N/A	SD2700
#24	SH2110	SD1874
#25	SH2426	SD1351



PACKED IN A LIFETIME PLASTIC BOX

**Set of Shellholders**

Eleven of the most popular sizes fit over 115 different cartridges. The chart ( at right ) is included with each shell holder set.

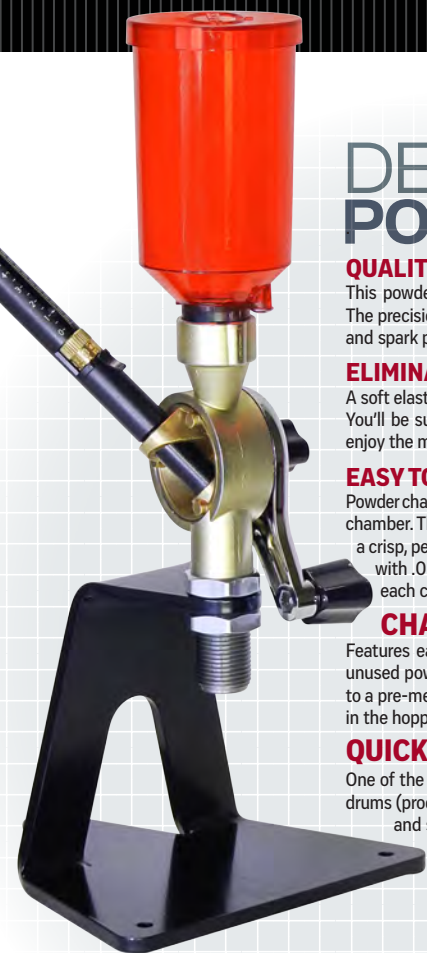
# 1 • 2 • 3 • 4 • 5 • 7 • 8 • 9 • 10 • 11 • 19

**RED STORAGE BOX ONLY 90196**

**RED STORAGE BOX 90198**  
with 11 Shellholders for LEE NEW AUTO-PRIME, ERGO-PRIME AND AUTO BENCH PRIME

**GREEN STORAGE BOX 90197**  
with 11 Universal Shellholders that work with all brands of presses

HOLDER	RIFLE	HOLDER	RIFLE	HOLDER	RIFLE
20	17 Hornet	2	7 x 57mm Mauser	5	375 Ultra Magnum
4	17 Remington	5	7 x 61 Sharpe & Hart	5	375 Ruger
4	204 Ruger	5	7mm Rem. Magnum	14	38/40 Win.
4	22 TCM	5	7mm Win S Mag	3	38/55 Winchester
20	22 Hornet	5	7mm Weatherby	8	40/82 Winchester
20	22 K Hornet	5	7mm Ultra Mag	5	416 Remington
3	22 Savage	2	284 Winchester	25	416 Rigby
2	22 BR	3	7.5mm Schmidt-Rubin	18	43 Mauser
6	218 Bee	7	30 M 1 Carbine	17	43 Spanish
12	22 PPC	3	7.65x53 Arg. Mauser	14	44/40
3	219 Zipper	12	7.62mm x 39	11	444 Marlin
10	220 Swift	16	7.62x54 Russian	8	45/70 Gov't
4	221 Fireball	3	30 Herrett	5	458 Win. Magnum
4	222 Remington	3	30/30 Win. (30 WCF)		
4	222 Rem. Magnum	2	300 Savage	15	5.7 x 28
4	223 (5.56mm)	16	30/378	1	22 Rem. Jet
5	223 WSSM	21	30 Remington	15	25 ACP
2	224 Clark (22/257)	2	308 Win. (7.62 NATO)	1	256 Win. Magnum
10	225 Winchester	4	30 AAC Blackout	19	30 Luger
2	22/250	5	30/40 Krag (30 U.S.)	19	30 Mauser
2	240 Weatherby	2	30/06 Springfield	4	32 Short Colt
2	243 Win.	5	300 H & H	4	32 Long Colt
5	243 WSSM	5	300 Weatherby	4	32 S & W
2	6mm Remington	5	300 Win. Magnum	4	32 S & W Long
2	244 Remington	5	300 Ultra Magnum	7	32 ACP
2	6mm Int'l	5	300 Win S Magnum	4	32 Colt N.P.
2	6mm/284	5	308 Norma Magnum	4	380 Auto
2	6mm/06	5	303 British	19	9mm LUGER
12	6 PPC	2	7.7 Japanese	1	38 S & W
4	6 x 47 (6mm/222M)	3	32 Win. Spcl	1	38 Colt N.P.
2	25/284	3	32 Win. S.L.	19	38 Super Auto
2	25/06	6	32/20 (32 W.C.F.)	19	38 ACP
6	25/20 Winchester	3	32/40 Winchester	1	38 Short Colt
2	250 Savage	2	8 x 57 Mauser	1	38 Long Colt
3	25/35	2	8mm 06	1	38 Special - 357 Mag
2	257 Roberts	2	8mm Man. Schoe.	19	357 Sig
5	257 Weatherby	5	8mm Rem. Magnum	2	357 Auto Magnum
5	303/25	17	8mm Lebel	19	40 S&W - 10mm Auto
2	6.5mm 06	16	8x56R Hungarian	1	41 Long Colt
2	6.5mm x 57	8	33 Winchester	19	41 Action Express
3	6.5 x 55 Mauser	25	338 Lapua	9	41 Magnum
10	6.5 Jap	5	338 Win. Magnum	11	44 S&W Spl - 44 Mag
5	6.5 Rem. Magnum	5	338 Ultra Magnum	11	44 S & W Russian
2	6.5 Carcano	5	340 Weatherby	2	44 Auto Mag.
12	6.5 Grendel	8	348 Win.	2	45 Auto
5	264 Win. Magnum	2	35 Remington	11x14	45 Colt
21	6.8 SPC	5	35 Winchester	14	45 Schofield
2	270 Winchester	2	35 Whelen	11	454 Casull
5	270 Weatherby	5	350 Rem. Mag.	14	460 S&W
5	270 Win S Mag	3	356 Winchester	5	455 Webley
2	280 Remington	2	358 Winchester	13	45 Auto Rim
2	7mm/08	5	358 Norma Magnum	3	45 Win. Magnum
2	7mm BR	3	375 Winchester	5x16	480 Ruger
4	7mm TCU	5	375 H & H	5	475 Linebaugh
3	7 x 30 Waters	5	375 Weatherby	16	500 S&W



# DELUXE PERFECT POWDER MEASURE

## QUALITY CONSTRUCTION

This powder measure features a high pressure die cast, diamond-machined body. The precision-machined rotor drum is cast from brass, which is naturally anti-static and spark proof.

## ELIMINATES CUT POWDER AND JERKY ACTION

A soft elastomer wiper strikes off the metering chamber rather than cut the powder. You'll be surprised at how smoothly the rotor operates. More importantly, you will enjoy the most uniform of charges.

## EASY TO SET & READ MICROMETER METERING CHAMBER

Powder charge adjustment is accomplished with a true micrometer adjustable metering chamber. The metering chamber is aluminum with a black anodized finish. Features a crisp, permanent, laser engraved scale. The brass micrometer thimble is engraved with .01cc graduations and has a releasable detent lock. With most rifle powders each click is about a 1/10 of a grain, perfect for working up a load.

## CHANGING POWDER IS FAST AND EASY

Features easily removable hopper with an on/off valve so you can quickly return unused powder to its original container or switch to another type. The hopper feeds to a pre-measuring chamber allowing precise charges regardless of the powder level in the hopper, eliminates the need for an extra powder baffle.

## QUICK CHANGE DRUMS

One of the nicest features is the ability to use the new Lee standard quick-change drums (product # 90453). These low cost drums can be preset to your favorite charge and swapped out in seconds.

PICTURED ON OPTIONAL STAND # 90587, SOLD SEPARATELY

**DELUXE PERFECT POWDER MEASURE**  
90699

**No powder measure, regardless of price, has all the features of the Lee Deluxe Powder Measure**



## PERFECT FOR USE WITH THE DELUXE PERFECT POWDER MEASURE & AUTO-DRUM

**QUICK CHANGE DRUM SET** features four precision molded nylon drums. Two small capacity for cases as small as the 25 ACP, adjustable to 223 size rifle cases. Large capacity drums adjustable from 223 case to cases as large as the belted magnums. The large drums include an insert to allow reduced capacity charging like the small drum.

All drums are infinitely adjustable within range. No tools required for adjustment. A graduated adjustment key is included with each drum. Each key is marked with .01cc graduations, allowing easy 1/10-grain powder adjustments.

**QUICK CHANGE DRUM SET 90453**

## Powder Measure Stand

Heavy, powder coated steel construction

7/8" mounting hole for all popular measures

Includes 3 no slip feet

Rock solid mount improves measure consistency

Space saving freestanding design is portable and convenient.

Works with other brands of powder measures

**POWDER MEASURE STAND 90587**



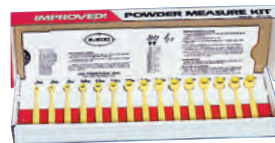
## Lee Safety Scale

*Safety and accuracy are the most important features*

This is the only scale that can never get out of adjustment. The beam is made from a very tough phenolic, the same type material used on table and counter tops. Phenolic is tough but, like glass, it can't be bent. Even if dropped you can feel confident that if it did not break it is still accurate. Sensitive and readable to 1/20 grain.

90681

**READ THIS IF YOU ALREADY HAVE A COMBINATION BULLET AND POWDER SCALE**  
Try this simple test to see how sensitive your scale really is. Cut a piece of regular writing paper or this catalog 5/16 inch square. With scale set on zero — drop the paper on the pan to see if it moves. It should read about .1 grain. Keep adding paper squares until it does move. The total number of squares needed to move your scale is your scale's sensitivity. We have seen digital powder scales that are only sensitive to 1/2 grain (FIVE paper squares!) A Lee Safety Scale will move with the first paper.



## Lee Powder Measure Kit

Fifteen uniformly graduated and proportioned powder dippers. Slide card shows the grains of powder each measure will dispense of every type of powder. Powder measures are inherently safe as they cannot get out of adjustment. That's why powder dippers continue to be the first choice of reloaders who load in small quantities.

90100

## Powder Funnel

A large, unbreakable funnel that fits all cases from .22 to .45 caliber. Hole in flange permits mounting to the Lee Turret Press, shelf or bench.



90190

## The Original Perfect Powder Measure

*Almost as good as a scale!*

**Solves problems common to ordinary drum type measures.**

**Gives you the confidence that your charges will be the most uniform possible.**

## Lee Perfect Powder Measure

Includes many of the features of the Deluxe Perfect Powder Measure, but the body is molded from an engineering grade polymer. Rotating micrometer adjustable metering chamber and elastomer wiper to prevent powder cutting. Works better than other powder measures priced four times as much.

90058



**FREE STURDY STEEL MOUNTING BRACKET included with each measure**

# CHARGE CASES WHILE EXPANDING THE CASE MOUTH

Lee Auto-Disk Powder Measure, the world's first case activated powder measure. This design of powder measure has been automatically charging cases since 1982. Measures include four precisely molded glass reinforced charge disks containing 24 cavities. Nothing is more convenient, consistent or inherently safer than fixed cavities. Disks can be changed in seconds and are properly sized and incremented to dispense 3 to 24 grains gunpowder.

"Modern Reloading" and all popular Lee die sets include Auto-Disk volume load data. Simply insert the correct disk and start reloading.

All Lee handgun dies and straight walled rifle cases have included our exclusive powder through expanding dies since the introduction of the Auto-Disk powder measure. If you don't have Lee dies you're still in luck; we offer powder through dies individually.

## Lee Auto-Disk Powder Measure

The measure that started it all, mostly unchanged since it was introduced. Automatically dispenses charges while the neck is being expanded and flared. The case itself actuates the measure. No case, no powder, so you'll never spill a charge. Simple fixed cavity charging. No adjusting or powder scale required when using suggested starting charges. Measure is actuated during the presses maximum mechanical advantage. This assures the smooth, even action of the measure. Hopper with built-in baffle contributes to the unmatched charge uniformity. Precisely molded, glass reinforced charge disks, accurately meter powder.

LEE AUTO-DISK POWDER MEASURE  
INCLUDES ALL FOUR DISKS

90578



## Lee Pro Auto-Disk Powder Measure

Commercial reloaders or competitive shooters first choice! Elastomer wiper and polytetrafluoroethylene (PTFE) non-stick metal casting make this the smoothest operating measure. Large hopper with integral shut-off valve makes changing powder or disks super convenient. Brass thumb-nuts attach the hopper to the body so you can change disks with no tools. Rubber wiper and seal prevents powder shearing and makes it more leak-resistant with fine-grain powders. Increased safety with positive pull-back lever.

The measure is attached to the die with a swivel adapter, allowing easy positioning and quick removal when changing cartridges. Included positive pull back lever reduces the chance of double charge when progressive reloading.

LEE PRO AUTO-DISK POWDER MEASURE  
INCLUDES ALL FOUR DISKS

90429



	AUTO-DISK POWDER MEASURE	PRO AUTO-DISK POWDER MEASURE
CARTRIDGE RANGE	9MM TO 45 COLT	
USE	IDEAL FOR HANDGUN	
SIMPLE SET UP	NOTHING TO ADJUST, NOTHING TO GET OUT OF ADJUSTMENT USE LEE PUBLISHED LOAD DATA	
CONSISTENCY	EXTREMELY CONSISTENT INCREMENTAL CHARGES	
WIPER TO PREVENT POWDER SHEARING	NO	YES
SWIVEL ADAPTER FOR FAST, EASY TRANSFER	NO	YES
ON/OFF VALVE	NO	YES

Both the Auto-Disk and Pro Auto-Disk come with a complete set of four disks.

Each disk has six cavities, so you get 24 cavities in all. The chart included on the rear of the instruction sheet lists the capacity of each cavity with every type of powder. If you reduce your charge 10% you can safely use this data without weighing your charge.

Fixed cavities are the safest way to meter powder because they can't be misadjusted or get out of adjustment.



## AUTO-DISK ACCESORIES

### PRO AUTO-DISK UPDATE KIT

Update any Lee Auto-Disk Powder Measure with all the PRO features, except for the teflon coating. Includes oversize hopper and valve assembly with elastomer wiper, swivel adapter assembly for fast and easy transfer between die sets, pullback lever, chain and attachments, solid brass knurled thumb nuts. **FREE ADJUSTABLE CHARGE BAR**

LEE PRO AUTO-DISK UPDATE KIT  
90377

### SWIVEL ADAPTER

For fast and easy transfer between die sets. Screws into your die without rotating the measure. Allows precise positioning with firm clamping.

SWIVEL ADAPTER 90477



## AUTO-DISK & PRO AUTO-DISK ACCESORIES

### ADJUSTABLE CHARGE BAR

Infinitely adjustable between .28 and 1.6 cc. Lifetime nylon with solid brass, zero backlash micrometer. Easy to set.

ADJUSTABLE CHARGE BAR 90792

### DOUBLE DISK KIT (NOT PICTURED)

This kit raises the hopper so you can stack two disks. This not only doubles the capacity of the disks but it makes very fine adjustments possible. Most powders can be adjusted up or down .1 grain with different combinations of disks. Complete listing of combinations, 4 extra disks, screws and risers are included.

LEE DOUBLE DISK KIT 90195



# AUTO DRUM

Case actuated; never spill a charge.

Exclusive elastomer wiper prevents powder shearing, works great with difficult metering extruded powders.

Machined body with labyrinth groove mates to the precision molded nylon drums providing a leak free fit with the finest powders.

Drum is actuated by a steel sector and pinion gear train.

Quick-change hopper has on/off valve to quickly change powders.

Sleek modern design, all gears springs and levers inside the die cast housing.

Same swivel adapter as our famous Pro Auto-Disk powder measure. Makes moving measure fast and convenient.

Double charge disconnecter reduces the chance of a double charge on progressive presses.

[ Press must have a fixed tool head to use this feature.]

Handgun and rifle drums included.

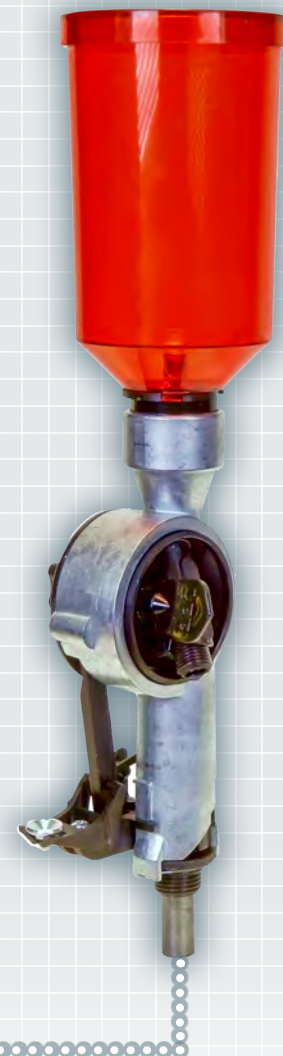
## Auto-Drum Powder Measure

Automatic case actuated drum powder measure. Accurately and automatically dispense powder in your favorite cartridge. Two infinitely adjustable drums included. These Quick Change drums will accurately and reliably drop charges from 1 to 80 grains of powder.

**AUTO-DRUM POWDER MEASURE**  
90811

### AUTO-DRUM POWDER MEASURE

CARTRIDGE RANGE	25 AUTO TO 300 WIN MAG
USE	IDEAL FOR BOTH HANDGUN AND RIFLE
ADJUSTABILITY	INFINITELY ADJUSTABLE WITH INCLUDED SMALL AND LARGE QUICK CHANGE DRUMS
CONSISTENCY	EXTREMELY CONSISTENT .01 CC INCREMENTAL CHARGE ADJUSTMENT
WIPER TO PREVENT POWDER SHEARING	YES
SWIVEL ADAPTER FOR FAST, EASY TRANSFER	YES
ON/OFF VALVE	YES



## LEE RIFLE CHARGING DIE KIT

Short and Long Charging Dies are included. These dies work the same as the pistol powder through expanding dies, except they do not expand the case mouth. Rifle case expansion is done in the sizing die. Can be used on 22 caliber, and up to the largest belted magnums.

**CHARGING DIE KIT**  
90995

**SHORT CHARGING DIE**  
22 HORNET TO 223 REM  
90668

**LONG CHARGING DIE**  
223 REM TO 300 WIN MAG  
90194

## POWDER MEASURE RISER

Installs between the Lee Powder through Expanding Die and Auto-Disk Powder Measure. Allows convenient use of other brands of dies that have extended adjusting screws and provides clearance for the Lee Safety Prime.

**POWDER MEASURE RISER**  
90041



## Quick Change Drum Set

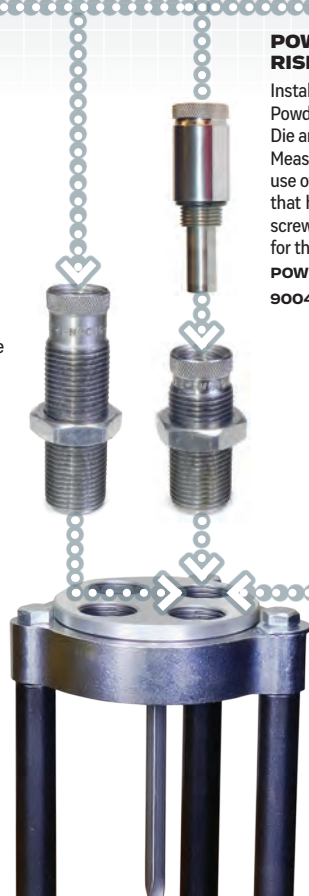
Quick change drum set features four precision molded nylon drums. Two small capacity for cases as small as the 25 ACP, adjustable to 223 size rifle cases. The large capacity drums are adjustable from 223 case to cases as large as the belted magnums. The large drums include an insert to allow reduced capacity charging, like the small drum.

**QUICK CHANGE DRUM SET** 90453

**POWDER THROUGH EXPANDING DIE**  
PG. 10

**Only Lee Dies permit charging the case while expanding the case mouth.**

**NOTE** The Auto-Disk, Pro Auto-Disk and Auto-Drum Powder Measures must be used with the powder through expanding die supplied with all Lee pistol dies, or Lee Rifle Charging Dies (see left). These dies may be purchased individually. Sizes on page 10.





### Lee Pro 4-20

Large diameter high capacity pot, holds approximately 20 pounds of lead. Nearly 4 inches of clearance under the spout accepts all brands of bullet molds and most sinker molds. It also includes an adjustable mold guide to quickly and accurately position any mold for pouring.

This second generation design incorporates the famous Lee patented high-efficiency design and dependable remote sensing thermostat, now in a dust tight housing. Long life 700-watt tubular heating element assures quick melting and rapid recovery. New micro adjustable, flow control valve adjusts instantly with a twist of the screw driver. Front mounted low maintenance replaceable valve spout allows instant reseating with a turn of a screwdriver.

LEE PRO 4-20      90947      110 VOLT  
LEE PRO 4-20      90948      220 VOLT



### Lee Precision Melter

High speed melter with an infinite heat control for the serious shooter. Easily handles 4-cavity molds. Takes less than 15 minutes to melt 4 pounds of metal. Same infinite heat control as used on the Production Pot. 500 watts AC only. Guaranteed 2 years.

PRECISION MELTER, 110V      90021  
EXPORT MODEL, 220V      90024

### LEE MOLD MALLET

Features ash hardwood construction. Cut the sprue and release the bullets with one handy tool. Ergonomic design makes it convenient and comfortable to use with long casting sessions. Mallet is 10 inches long.

90084



### UNIQUE INFINITE HEAT CONTROL

A highly reliable control, mounted away from the high heat of the pot. Eliminates failures usually associated with thermostatically controlled units. Thermal feed back to the infinite control permits heater to put out full power until metal has melted.



### Magnum Melter

Large 4" diameter pot allows easy access for the ladle caster. Same high efficiency design that has made Lee pots the most popular. Melt time is less than 20 minutes with just 700 watts. 20-lb. capacity for the longest casting session.

MAGNUM MELTER      110 VOLT      90949

LEE  
MAKES  
BULLET  
CASTING  
EASIER



### Lee Production Pot IV

Large, deep pot holds approximately 10 pounds of lead. Melt time is less than 20 minutes. Pour spout up front where it belongs so you can see what you're doing. Infinite heat control. Uses only 500 watts of power during heat-up and a lot less to maintain temperature. Large, stable base for safety. 4" of clearance under the spout is high enough to accept all brands of bullet molds and most sinker molds.

PRODUCTION POT IV      110 VOLT      90009  
EXPORT MODEL      220 VOLT      90008

### LEE INGOT MOLD

Use to cast 1/2 and one pound ingots. Perfect for remelting and alloying. Wood handles stay cool. Aluminum mold is lightweight and rustproof.

90029

### LEE LEAD LADLE

A convenient size ladle for bullet casting. Works equally well for right and left handers. Handy for skimming and stirring metal.

90026

**WARNING** MELTING LEAD AND CASTING LEAD OBJECTS WILL EXPOSE YOU AND OTHERS IN THE AREA TO LEAD, WHICH IS KNOWN TO CAUSE BIRTH DEFECTS, OTHER REPRODUCTIVE HARM AND CANCER. SEE INSTRUCTIONS ON "REDUCING EXPOSURE" SUPPLIED WITH PRODUCT.

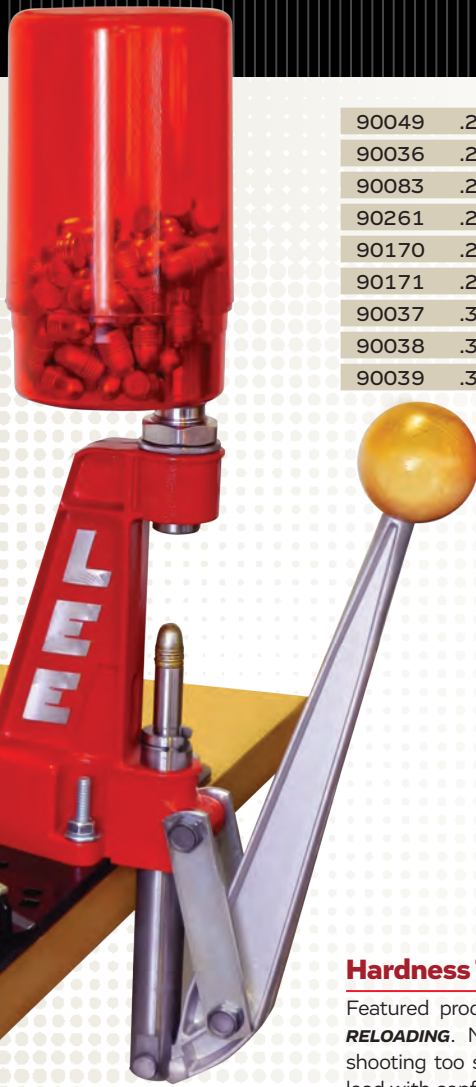
## Lube & Sizing Kit

Fastest and easiest way to lubricate and size cast bullets. Standard 7/8 x 14 threads fit any reloading press. Bullets are pushed through the sizing die nose first, so no special nose punches are needed. Gas checks are automatically seated and crimped in place. Sized bullets captured in the special container.

**COMPLETE FOR ONE SIZE**

BREECH LOCK RELOADER PRESS ( 90045 ) PG. 18 AND LIQUID ALOX BOTTLE ( 90177 ) PICTURED ARE SOLD SEPARATELY.

Bullets must be lubricated for sizing, order Lee Liquid Alox below, good for thousands of bullets.



90049	.224	90044	.314	90053	.427
90036	.225	90686	.323	90054	.429
90083	.243	90934	.329	90062	.430
90261	.278	90576	.339	90061	.451
90170	.284	90046	.356	90055	.452
90171	.285	90047	.357	90056	.454
90037	.308	90048	.358	90057	.457
90038	.309	90060	.401	90191	.501
90039	.311	90052	.410	90188	.510

## Universal Case Expanding Die

Gently flares the case mouth to accept cast bullets without shaving. Works great to prevent damaging the moly and low friction coatings found on today's high performance jacketed bullets. Includes neck plugs for .22 cal through .45 cal. Works on everything from the 22 Hornet to the largest Ultra Mag. Costs so little and works so well you can't afford to be without one.

90798

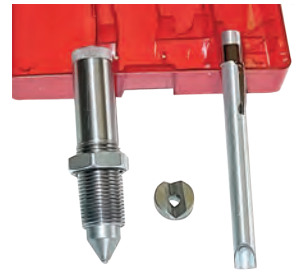


## Hardness Testing Kit

Featured product in CHAPTER 10 **MODERN RELOADING**. No more wasted components shooting too soft or too hard lead. Cast and load with confidence knowing your alloy is up to the job. Quickly and precisely check hardness of your lead alloy. Exclusive conversion chart tells the maximum operating pressure of any lead alloy.

90924

INCLUDES calibrated hardened steel ball indenter v" block cradle snaps into standard press ram 20 power 4 lens optical measuring microscope



# Try this with your bullet lubricant

The bullet melts while the Lee Liquid Alox clings tenaciously to the bullet



## Lee Liquid Alox

Lee Liquid Alox gives better accuracy because it eliminates leading. The lube coats the entire bullet like a thin jacket and dries to a soft, varnish-like finish that really clings. The dried coating does not degrade gunpowder. Easy to apply; eliminates the need for sizing of most cast bullets. While it works well with all cast or swaged bullets better than any other lube, it works most economically with micro band bullets, which are designed for tumble lubing.

4 OZ. DISPENSER BOTTLE 90177

*Enough for thousands of bullets*



## LUBRICATING BULLETS

Traditional bullet lubricating methods of placing lube only in the grooves are inferior to the modern method of coating the entire bullet with Lee Liquid Alox. This places the lube where needed, on the surfaces that rub against the bore.



Gently shake the bullets in an orbital motion to coat the bullets. If they do not coat completely, add a little more lube.



Spread the bullets onto waxed paper and let dry overnight.

MOLD NUMBER CODE

**C** GAS CHECK  
**TL** Micro Band

**309** DIAMETER

**230** WEIGHT IN GRAINS

**R** POINT SHAPE  
**WC** Wad Cutter  
**SWC** SemiWad Cutter  
**RF** Round with Flat  
**R** 1 Ogive Radius  
**2R** 2 Ogive Radius  
**TC** Truncated Cone



LEE MOLD BLOCKS ARE MADE FROM ALUMINUM BECAUSE OF THE EXCEPTIONAL MOLDING QUALITIES

MOLD CAVITIES ARE CNC-MACHINED FOR UNMATCHED ROUNDNESS AND SIZE CONTROL

MOST BULLETS FROM LEE MOLDS CAN BE USED AS CAST WITHOUT SIZING



DOUBLE CAVITY MOLDS

Handles and sprue plate included.

HOLLOW BASE MOLDS

These are available in single cavity only. They all have self centering automatic core pins for the fastest possible molding. Handles and sprue plate included.

SIX CAVITY COMMERCIAL QUALITY MOLDS

These are made for heavy duty volume production. The mold and blocks have steel bushing and alignment pins for lasting precision. Price includes a cam operated sprue plate to eliminate the pounding common to ordinary molds. The sprue plate is hard anodized and held down with wave washers at each end. No finer mold can be purchased at any price. Handles extra.

MOLD HANDLES

Precision steel mold handles fit not only the Lee Six Cavity blocks, but most other brands of one and two cavity molds. Priced low enough so you can have a set for every pair of blocks.

90005



TRADITIONAL GROOVE

This style of lubrication groove is designed for old style hard lubricants. Also works well with LEE LIQUID ALOX.



MICRO BAND GROOVE FOR LIQUID ALOX #90177

The reduced friction of the micro bands allow a higher velocity with the same pressure as conventional lube grooves.

MICRO BANDS USUALLY REQUIRE NO SIZING

The bullet shank has many shallow grooves for maximum liquid lubricant retention. A great way to make bullets in quantity with minimum time, effort and equipment. More accurate than ordinary cast bullets. The reduced friction of the micro bands gives you more velocity with less pressure.

RIFLE BULLET MOLDS

	22 CAL	270	7 MM	30 CALIBER RIFLE								BEST SUBSONIC REQUIRES FAST TWIST RIFLING	7.62 X 39 Bullet Design by C.E. Harris	303 B
BALLISTIC COEFFICIENT	.155	.310	.305	.154	.163	.224	.252	.268	.317	.352	.688	.268	.276	.247
MOLD	C225-55-RF	C277-135-RF	C285-130-R	C309-113-F	C309-120-R	C309-150-F	C309-160-R	C309-170-F	C309-180-R	C309-200-R	TL309-230-5R	C312-155-2R	CTL312-160-2R	C312-185-1R
DOUBLE	90451	90454	90360	90362	90364	90366	90367	90368	90369	90370	90307	90385	90361	90371
6 CAVITY	90459											90741	90579	
LUBE & SIZE	90036	90261	90171	90038	90038	90038	90038	90038	90038	90038	90038	90039	90039	90039
	8 mm	8 x 56	338 CAL	35 REM	375 Win 38/55	45-70 CALIBER RIFLE					50-70 CAL			
BALLISTIC COEFFICIENT	.216	.361	.250	.186	.250	.211	.225	.250	.250	.278	.443	.220	.283	
MOLD	C324-175-1R	C329-205-1R	C338-220-1R	C358-200-RF	379-250-RF	457-340-F	457-405-F	459-405-HB	457-450-F	C457-500-F	459-500-3R	515-450-F	515-500-F	
DOUBLE	90274	90775	90372	90449	90324	90373	90374		90375	90376	90577	90255	90266	
6 CAVITY				90016										
HOLLOW								90268						
LUBE & SIZE	90686	90934	90576	90048	custom	90057	90057	custom	90057	90057	custom	custom	custom	



Lee molds feature trochoidal venting



Unique venting on the mold face and sprue plate mating surface allows consistent and effortless fill out.



## PISTOL BULLET MOLDS

32/20 • 32S&W LONG • 32 COLT NP

38 SPECIAL • 38 S & W • 38 COLT NEW POLICE • 357 MAG

BALLISTIC COEFFICIENT MOLD	.125	.174	.100	.106	.116	.142	.072	.072	.131	.117	.117	.207	.160
DOUBLE	90300	90301	90311	90316	90574	90318	90279	90312	90328	90321	90322	90388	90303
6 CAVITY	90308			90315	90306	90317	90294	90380	90326	90295	90327	90319	90692
LUBE & SIZE	90039	90039	90044	90048	90048	90048	90048	90048	90048	90048	90048	90048	90048

9MM LUGER • 38 SUPER AUTO • 380 AUTO

9MM MAKAROV

40 S&W • 10 MM AUTO

41 MAGNUM

44 SPEC • 44 MAG • 44/40

BALLISTIC COEFFICIENT MOLD	.107	.105	.123	.164	.127	.166	.093	.117	.141	.141	.110	.119	.111	.124
DOUBLE	90601	90305	90239	90464	90238	90309	90466	90470	90431	90256	90330	90335	90336	90338
6 CAVITY	90672		90387	90465	90402	90457			90433	90690				90483
LUBE & SIZE	90046	90046	90046	90046	90046	90046	custom	90060	90060	90060	90052	90052	90054	90054

44 SPECIAL • 44 MAGNUM • 44/40

45 ACP • 45 AUTO RIM • 45 COLT

BALLISTIC COEFFICIENT MOLD	.124	.196	.169	.218	.090	.127	.140	.127	.145	.189	.146	.146
DOUBLE	90285	90341	90299	90858	90570	90348	90234	90463	90351	90346	90287	90290
6 CAVITY	90428	90339	90357	90227		90310	90697	90379	90352	90350	90286	90289
LUBE & SIZE	90054	90054	90062	90062	90055	90055	90055	90055	90055	90055	90055	90055

45 ACP • 45 AUTO RIM  
45 COLT

45 COLT  
454 CASULL

480 RUGER

475 LINEBAUGH

500 S&W

BALLISTIC COEFFICIENT MOLD	.136	.210	.233	.256	.271	.296
DOUBLE	90356	90358	90359	90237	90241	90991
6 CAVITY		90349	90228			
LUBE & SIZE	90055	90055	90055	custom	custom	90191

### CUSTOM MOLDS

We can produce custom bullet molds within certain limits.



**WARNING** Melting lead and casting lead objects will expose you and others in the area to lead, which is known to cause birth defects, other reproductive harm and cancer. See instructions on "Reducing Exposure" supplied with product.



### Minie Bullet Mold

AUTOMATIC CORE PIN MOLD. Open mold upside down to empty. Close it and you're ready to cast the next. The core pin automatically centers in the mold. Easily cast 200 per hour. A quality mold built to last as long as your rifle.

COMPLETE W/ HANDLES AND AUTOMATIC COREPIN



### Round Ball Molds

Have tangential cut off which eliminates the objectional nib at the sprue.

DOUBLE CAVITY WITH HANDLES  
12-CAVITY WITHOUT HANDLES

SIZE	DOUBLE	SIZE	DOUBLE	SIZE	DOUBLE
.311	90406	.440	90436	.535	90456
.319	90410	.445	90438	.562	90460
.350	90415	.451	90440	.575	90461
.360	90418	.454	90442	.600	90975
.375	90420	.457	90444	SIZE	SINGLE
.380	90423	.490	90448	.690	90978*
.390	90424	.495	90450	*DUE TO THE DIAMETER, MOLD SHIPS AS A SINGLE CAVITY.	
.395	90425	.500	90452	SIZE	12 CAVITY
.433	90432	.530	90283	.490	90691

Handles #90005

## Cast Minie Bullets as fast as Round Balls

### Improved Minie, Traditional Design

45 Cal.	.450-294M	90467
45 Cal. oversize	.454-298M	90469
50 Cal.	.500-360M	90472
54 Cal.	.533-410M	90473
54 Cal. oversize	.540-415M	90474
58 cal.	.575-472M	90476
58 cal. oversize	.578-478M	90478

Improved design is easier to cast and load.

Usually more accurate; a wider variety of sizes.

### Modern Minie, Target Design

50 Cal.	.500-354M	90471
---------	-----------	-------

The most accurate of all Minies. Makes nice, clean holes in the target. The first choice for highest scores.

### Original Style Minie Bullet

58 Caliber	575-500M	90481
------------	----------	-------

An extremely popular, traditional size Minie bullet.

Available in 58 caliber only. Certainly a must for authentic muzzle loading shooting.

## R·E·A·L BULLET FOR MUZZLE LOADERS



### Rifling · Engraved · At · Loading

A solid bullet that loads easily even after many firings because of its unique cleaning action. Will not tumble. A perfect hunting bullet with heavy loads. Easy to cast. Shoots accurately even in greatly oversize barrels. **DOUBLE CAVITY WITH HANDLES**

	Grains	Double
45 Cal.	200	90390
45 Cal.	250	90392
50 Cal.	250	90394
50 Cal.	320	90396
54 Cal.	300	90398
54 Cal.	380	90400
58 Cal.	440	90404



### Combo Molds

45 CAL 20ORB WITH HANDLES  
90405

Double cavity mold casts one 45 Cal. 200 R-E-A-L bullet and one .440 diameter Round Ball.

50 CAL 32ORB WITH HANDLES

90488

Double cavity mold casts one 50 Cal. 320 R-E-A-L bullet and one .490 diameter Round Ball.

### RIFLING-ENGRAVED-AT-LOADING

The driving bands are large enough to adequately engage the rifling when pushed into the muzzle, and thin enough to easily engrave. They're strong enough to withstand maximum charges without stripping or gas cutting.

**UNIQUE CLEANING ACTION** You can shoot all day without cleaning your rifle between shots! When inserted into the muzzle, tiny scraping edges are swagged forward on each driving band. These perfect fitting scrapers remove the fouling from the previous shot.

**EASIER, FASTER TO LOAD** It's easy to load straight and true, easier and faster than a round ball with patch. Easily stabilized with very light charges, the R-E-A-L bullet also retains accuracy with maximum loads. Each band is generously tapered to the rear with an angle

close to that of a lathe center, so as to center the bullet against the rifle bands. When pushed in, the bullet automatically centers in the bore.

**MORE ACCURATE** The bevel base of the R-E-A-L bullet contributes to greater accuracy. When the bullet exits the bore, the gas escapes equally around the perimeter of the base. The uniform bevel is resistant to nicks that would permit gas to escape prematurely and cause a jet effect on one side of the bullet.



### Conical Bullet Mold for black powder revolvers

A super accurate bullet that is easy to load straight and true. Two lube grooves prevent flash ignition and lead fouling. More energy and far greater accuracy than round balls.



	DOUBLE
36 Cal. 375-130-1R	90378
44 Cal. Rem. 450-200-1R	90382
44 Ruger Old Army 456-220-1R	90384

**WARNING** MELTING LEAD AND CASTING LEAD OBJECTS WILL EXPOSE YOU AND OTHERS IN THE AREA TO LEAD, WHICH IS KNOWN TO CAUSE BIRTH DEFECTS, OTHER REPRODUCTIVE HARM AND CANCER. SEE INSTRUCTIONS ON "REDUCING EXPOSURE" SUPPLIED WITH PRODUCT.



**LOAD SLUGS  
FOR LESS  
THAN STANDARD  
TRAP LOADS**

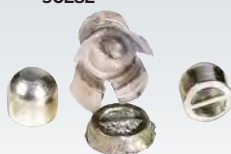
**Lee Slug Mold**

Load slugs for less than standard trap loads. The LEE DRIVE KEY slug is loaded in standard trap hull with standard wad and conventional folded crimp. Slug loads are produced with any standard shot shell reloading press.

Lee Slug Mold features the exclusive drive key. The drive key positively rotates the slug in rifled shotgun barrels and doubles as a support rib allowing use of a standard trap wad—no need for a support wad or base filler. Sabot wad design outperforms rifled slugs in rifled slug barrels. Velocity and accuracy meet and exceed expensive factory loaded rifled slugs. Molds feature self centering automatic core pins for maximum speed and convenience. Mold is complete with sprue plate, handles and complete instructions with suggested loads.

SHOTGUN SLUG MOLD	1 OZ.	12 GA.	90281
SHOTGUN SLUG MOLD	7/8 OZ.	12 GA.	90282

Exclusive Drive Key positively rotates the slug in rifled barrels and eliminates the need for support wads or base fillers; assures positive and smooth discard of the sabot wad.



*Guaranteed more accurate  
than factory slugs or your money back*

**18 CAVITY  
BUCKSHOT  
BULLET  
MOLDS**



**Lee 18 Cavity  
Buckshot Bullet Molds**

Precision-machined molds produce 18 linked pellets per cast. Each cast produces enough pellets to load two 12 Gauge shotshells. Easily cast 3,000 pellets per hour. Handles shown not included. Order product no. 90005 on page 36.

BALL DIAMETER .240 #4 BUCKSHOT	90028
BALL DIAMETER .330 00 BUCKSHOT	90486
BALL DIAMETER .360 000 BUCKSHOT	90192
HANDLES	90005

**Load shotgun shells,  
steel or lead shot,  
to look and shoot like new**

**Lee Load-All II**

Lee Load-All II shotgun shells not only look better than those loaded on machines costing hundreds of dollars, but they usually have more uniform velocity and patterns.

Twenty-four shot and powder bushings are included free. The bushings alone can cost several dollars each from other manufacturers—and they're not as accurate as those made by Lee. Only Lee supplies molded bushings.

This is a time proven tool. There are hundreds of thousands in use world wide: in nearly forty years, we have yet to see one worn out. Written two-year unconditional guarantee and a lifetime warranty.

<b>LEE LOAD-ALL II</b>	
12 GAUGE	90011
16 GAUGE	90015
20 GAUGE	90012



**Load-All Options**

**CONVERSION TO  
ANOTHER GAUGE**

The Load-All II can be easily and economically converted to another gauge with the conversion kit. The entire die carrier is replaced so no adjustments are needed. The conversion kit includes the die carrier, steel sizer, wad guide, shell holder, load data and instructions.

**CONVERSION KIT**

12 GAUGE	90070
16 GAUGE	90071
20 GAUGE	90072

**LEE ADJUSTABLE  
SHOT DIPPER**

Accurately measure lead, bismuth and steel. Telescoping cup adjustable from 7/8 to 1 7/8 oz. Calibrated for lead shot. Works perfect for large pellet sizes. With steel, simply count out the pellets or weigh and set dipper accordingly. 90973





**Reloading saves you money—and no one saves you more than Lee Precision.**

**Our mission is simple: produce the best, American made value in reloading tools. Our great prices come from patented, innovative designs.**

**Thank you for choosing Lee Precision products.**