

SEE WHAT YOU'VE BEEN MISSING

# HIVIZ®

SHOOTING SYSTEMS



2020  
PRODUCT CATALOG



# TABLE OF CONTENTS

<b>NEW PRODUCTS</b>	<b>4-5</b>
<b>LITEWAVE H3 TRITIUM/LITEPIPE 24 ILLUMINATION</b>	<b>6-7</b>
<b>MAGNI-OPTICS® CROSS-EYE DOMINANCE SIGHTS</b>	<b>8-9</b>
<b>HANDGUN SIGHTS</b>	<b>10-25</b>
<b>SHOTGUN SIGHTS - MAGNETIC/PLAIN BARREL</b>	<b>26-29</b>
<b>SHOTGUN SIGHTS - BEAD REPLACEMENTS</b>	<b>30-33</b>
<b>SHOTGUN SIGHTS - TURKEY/DEER SIGHT SETS</b>	<b>34-35</b>
<b>RIFLE SIGHTS</b>	<b>36-39</b>
<b>TACTICAL SIGHTS</b>	<b>40</b>
<b>ACCESSORIES - RECOIL PADS</b>	<b>41</b>
<b>SHOTGUN SIGHT SELECTION CHART</b>	<b>42-45</b>
<b>HIVIZ PRO STAFF</b>	<b>46-47</b>

**SEE WHAT YOU'VE BEEN MISSING**



## INNOVATION AND PERFORMANCE IS WHAT WE DO

HIVIZ® began in 1996 with a single product. Our goal was simple, to advance the art of shooting. For more than 20 years HIVIZ® has worked toward this goal by continuing to offer high quality and innovative products for shotguns, handguns and rifles. From our unique molded litepipes to our patented LiteWave H3 Tritium/Fiber optic sights HIVIZ® continues to be a leader in the shooting world. Our ultimate goal is to provide you, our valued and loyal customers with best sights available to increase your success and enjoyment of the shooting sports.

We are proud to be installed as original equipment on many major brands including Ruger®, Smith & Wesson®, Benelli®, Browning®, Henry® and Remington®.

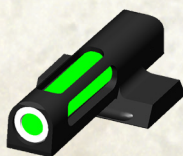




# NEW PRODUCTS FOR 2020

## LITEWAVE TECHNOLOGY EXPRESS

Introducing the HIVIZ® Litewave H3™ Express sight set. Many consider the Express sight to be the fastest sight to align. The Express sight is very natural and instinctive especially in reactionary situations, for this reason it has long been the standard open sight choice for dangerous game. With our Litewave H3 Express HIVIZ has taken the Express sight to the next level with our tritium/fiber optic combination. Available for Glock models (except 42, 43 and 48) and Smith & Wesson Shield (except EZ380) your choice of green front and rear or green front and orange rear sight.



## RUGER®

The HIVIZ Ruger revolver rear sight with interchangeable LitePipes. All steel construction rear sight with click adjustment for windage. Fits all Ruger revolvers with factory adjustable rear sight. Features HIVIZ interchangeable LitePipes. Sight includes red and green Litepipes. ●●  
RGRAD211





## LITEWAVE H3™ COMPSIGHT®

With the introduction of the LiteWave H3 tritium/fiber optic handgun sight HIVIZ started a journey to revolutionize the world of sights as we know it. The LiteWave H3 Compsight is our first tritium/fiber optic sight for shotguns. For 20 years the HIVIZ Compsight has been the standard for shotguns from hunting and recreational use to competition at the highest level. With the addition of tritium you now can have a sight that will meet all your needs from daytime sporting use to early morning hunting, home defense and beyond. ●

PMN301



## SMITH & WESSON®

HIVIZ is very excited to introduce a fiber optic rear sight for S&W revolvers, featuring interchangeable LitePipes. All steel construction rear sight with click adjustment for windage. Fits S&W revolvers with factory adjustable rear sight. Features HIVIZ interchangeable LitePipes. Sight includes red and green Litepipes. ● ●

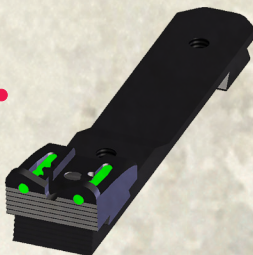
SWR11



## UNIVERSAL REAR SIGHT

The HIVIZ Universal Rear Rifle Sight offers shooters the opportunity to brighten up the rear sight picture on a wide selection of rifles. Standard 3/8" dovetail, this sight is easy to install, has full windage and elevation adjustments, and features HIVIZ interchangeable LitePipes. Sight includes red and green Litepipes. ● ●

UNI2006



# LITEWAVE TECHNOLOGY



## TRITIUM/LITEPIPE SIGHTS

### NEW LITEWAVE H3 TRITIUM/LITEPIPE SIGHT 24 HOUR ILLUMINATION

The LiteWave H3 combines Tritium with the HIVIZ Litepipe technology for 24 illumination, true day and night performance. The all steel sight sets are rugged and dependable, designed for the roughest use, whether it is personal defense and protection, Law Enforcement or Military.

The new LiteWave H3 ensures fast sight acquisition and a bright sight picture day or night. The patented LiteWave H3 carries a 12 year tritium warranty for loss of illumination. Available for many popular handgun models the LiteWave H3 sights duplicate factory sight heights, this ensures LiteWave H3 sights will fit the same holsters and accessories as the factory sights.



### LITEWAVE H3 FEATURES

- All steel construction
- Fiber optic color choice
- Brightest Tritium
- Bright white or orange front sight ring
- Fully encapsulated Tritium
- Chemical resistant
- Patented
- 12 Year warranty





# LITEWAVE H3

GLN321	Green litepipes w/white front ring	Fits Glock models 42, 42X, 43 and 48
GLN421	Green/orange litepipes w/white front ring	
GLN521	Green litepipes w/orange front ring	
GLN621	Green/orange litepipes w/orange front ring	
GLN325	Green litepipes w/white front ring	Fits all generation Glock models
GLN425	Green/orange litepipes w/white front ring	chambered in 9mm, 40 S&W and
GLN525	Green litepipes w/orange front ring	.357 Sig.; does not fit models 42,43
GLN625	Green/orange litepipes w/orange front ring	
GLXN325	Green litepipes w/white front ring	
GLXN425	Green/orange litepipes w/white front ring	
GLN329	Green litepipes w/white front ring	Fits all generation Glock models
GLN429	Green/orange litepipes w/white front ring	chambered in 45 ACP, 10mm and 45
GLN529	Green litepipes w/orange front ring	GAP.
GLN629	Green/orange litepipes w/orange front ring	
GLXN329	Green litepipes w/white front ring	
GLXN429	Green/orange litepipes w/white front ring	
MPSN321	Green litepipes w/white front ring	Fits Shield models in 9mm, 40 S&W,
MPSN421	Green/orange litepipes w/white front ring	and .45 calibers.
MPSN521	Green litepipes w/orange front ring	
MPSN621	Green/orange litepipes w/orange front ring	
MPSXN321	Green litepipes w/white front ring	
MPSXN421	Green/orange litepipes w/white front ring	
MPN321	Green litepipes w/white front ring	Fits M&P fullsize and compact in all
MPN421	Green/orange litepipes w/white front ring	calibers. Does not fit CORE, M&P 22
MPN521	Green litepipes w/orange front ring	or M&P long slide models.
MPN621	Green/orange litepipes w/orange front ring	
XDN321	Green litepipes w/white front ring	Fits the XD,XDS,XDE and XD-M
XDN421	Green/orange litepipes w/white front ring	models; does not fit the XD 5.25.
XDN521	Green litepipes w/orange front ring	
XDN621	Green/orange litepipes w/orange front ring	
KBN321	Green litepipes w/white front ring	Fits 1911 models with fixed rear
KBN421	Green/orange litepipes w/white front ring	sight; does not fit Micro or Solo.
KBN521	Green litepipes w/orange front ring	
KBN621	Green/orange litepipes w/orange front ring	
HKN321	Green litepipes w/white front ring	Fits HK VP9, VP9SK, VP40, HK45,
HKN421	Green/orange litepipes w/white front ring	HK45C, P30 AND P30L
HKN521	Green litepipes w/orange front ring	
HKN621	Green/orange litepipes w/orange front ring	
SWN3001	Sight height 0.250	Fits Smith and Wesson revolvers with
SWN3002	Sight height 0.208	the DX type interchangeable front
SWN3003	Sight height 0.310	sight.

IS CROSS-EYE DOMINANCE A PROBLEM FOR YOU? CHECK OUT MAGNI-OPTICS® TECHNOLOGY ONLY FROM HIVIZ® SHOOTING SYSTEMS.

## Shooting Tip # 1: *Cross Eye Dominance*



**Shooting Tip #1: Determine Eye Dominance**  
With both eyes open point your index finger at an object across the room. Now close your left eye. If you are still pointing at the object, as in #3, you are right eye dominant. If it appears you are pointing to the side of the object, as in #4, you are left eye dominant. There are varying degrees of eye dominance, but this is the most basic test. Previous solutions to cross-eye dominance ranged from switching shoulders to obscuring the vision of the offending eye. Magni-Optic technology solves it instantly.



If you are sighting with the proper eye, you'll see the fully lit sight.



If you are sighting with the wrong eye the sight won't appear lit.

Be the best shotgun shooter you can be with Magni-Optics Technology. No other shotgun sight on the market combines a LitePipe with a unique magnifying chamber and lens to correct cross-eye dominance issues. This proprietary design makes better shooters by encouraging both-eyes-open shooting.

The use of magnification ensures that the lighted sight picture is only visible if the shooter uses the correct sighting eye and the head is in the proper shooting position. Just as if you were looking through a rifle scope, only the shooting eye can see through the scope, only your shooting eye will see the LitePipe.

**Cross-eye dominance is an issue that affects over 40% of shooters, Magni-Optics allows cross eye dominant shooters to shoot with both eyes open using their non-dominant eye.**



Magni-Optics® technology is available in both magnetic and bead replacement models with interchangeable LitePipes.

## MAGNI-HUNTER

Magni-Hunter harnesses the magnetic technology HIVIZ® is known for—powerful, rare earth magnets—that attach this cross-eye dominance solving sight easily yet firmly to the rib of nearly any shotgun. Featuring easily replaceable LitePipes in red and green, Magni-Hunter promises a quick-attach solution to any shooter battling cross eye dominance. ● ●



MGH2007-I

**MGH2007-I** Narrow Cross-Eye Dominant Correcting Sight  
Fits ribs from .230" to .330"  
(15/64" to 21/64") (5.8mm to 8.3mm)



MGH2007-II

**MGH2007-II** Wide Cross-eye Dominant Correcting Sight  
Fits ribs from .355" to .440"  
(23/64" to 7/16") (9mm to 11.1mm)

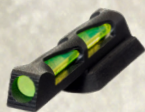
## MAGNI-COMP

This screw-on bead sight offers instant success to cross-eye dominant shooters. Utilizing HIVIZ Magni-Optics Technology, Magni-Comp is an affordable sight solution that replaces standard beads on most shotguns offering struggling shooters immediate relief and better shooting. Comes with red and green interchangeable LitePipes. ● ●  
**MGC2006**



# HANDGUN SIGHTS

## CZ



### **CZ 75, 83, 85, 97, P-01**

- LiteWave® Front Sight
- Fits CZ 75, 83, 85, 97 & P-01 pistols; does not fit Kadet, Champion & IPSC models
- Interchangeable LitePipes: ●●●○  
CZLW01



### **CZ 75, 85, P-01**

- LiteWave® Rear Sight
- Fits CZ 75, 85 & P-01 pistols with fixed rear sights
- Interchangeable LitePipes: ●●●●  
CZLW11

## Shooting Tip #8: *Trigger Finger by Jerry Miculek*

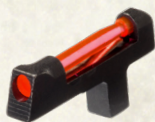


The key to a correct revolver grip is the placement of the trigger finger, and the key to fast revolver shooting is to keep the trigger finger square on the trigger (1) throughout its entire arc of movement. You never want your finger to leave the face of the trigger anywhere during the firing sequence.

Get your hand as high as you can on the grip and still have the revolver functional. The web of the shooting hand is over the back strap (2), so when you fire you have enough clearance for the hammer to cycle. You want the centerline of the bore to be close to the centerline of your hand. Your hand is high on the grip the barrel held low. Use of the non-firing hand is 70% of the control of the revolver. Use both thumbs, wrap them over, and pull tightly. The big thing is consistency to the presentation of the target.



## COLT



### COLT 1911

- Fits most wide tenon 1911's
  - Interchangeable LitePipes: ● ● ○
- CT2009

## FNH



### FNS & FNX MODELS

- Steel construction
- Does not fit FNP models
- Interchangeable LitePipes: ● ● ○

FX-9: Fits FNS-9 & FNX-9 blade  
height .213"

FX-40: Fits FNS-40 & FNX-40 blade  
height .198"

FX-45: Fits FNS-45 & FNX-45 blade  
height .181"

# HANDGUN SIGHTS



## GLOCK .315 FRONT SIGHT

- 0.315 tall front sight designed to be matched with HIVIZ® adjustable Glock rear sight.
- Fits all Glock models except 42 and 43
- Interchangeable LitePipes: ●●○ GLAD201



## GLOCK ADJUSTABLE REAR SIGHT

- Click adjustable windage and elevation
- All steel competition grade
- Fits all Glock models except 42 and 43
- Interchangeable LitePipes: ●●● GLAD211





## GLOCK – ALL MODELS

- LiteWave® Front Sight
  - Fits all Generations of Glock pistols
  - Interchangeable LitePipes: ● ● ●
- GL2014

## GLOCK – ALL MODELS

- Overmold Tactical Front Sight
  - Larger .120" diameter LitePipe  
Blade height 0.180
  - Fits All Glock pistols
- GL2009-G ●  
GL2009-R ●



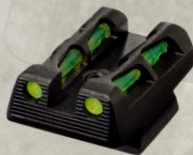
## GLOCK 9MM, 40 S&W, 357 SIG

Target Sight Set for 34/35  
Front Sight Size: .215" Tall x .120" Wide  
Rear Sight Size: .224" Tall;  
Notch is .140" Wide x .125" Deep  
Front: Interchangeable LitePipes: ● ● ●  
Rear: Interchangeable LitePipes: ● ● ●  
GLT178



## HIVIZ SIGHT INSTALLATION TOOL

- Sight Installation Tool for All Glock  
Front Sights
- GLOCK-TL



## GLOCK 9MM, 40 S&W, 357 SIG, 45 & 10 MM

- LiteWave® Rear Sight
  - GLLW15 Fits Glock models chambered  
in 9mm, 40 S&W & 357 Sig; does not  
fit models 42 & 43
  - GLLW19 Fits models chambered  
in 45 ACP, 45 GAP & 10mm
  - Interchangeable LitePipes: ● ● ●
- GLLW15  
GLLW19

## GLOCK 42, 43

- LiteWave® Rear Sight
  - Fits Glock models 42 & 43
  - Interchangeable LitePipes: ● ● ●
- GLLW11

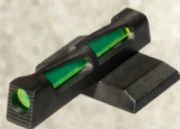
# HANDGUN SIGHTS

## Shooting Tip #15: Focus

Shotgunners focus on their target and are aware of their sights, but it's just the opposite for handgunners. Most combat and defensive handgun instructors preach "focus on your front sight and blur your target". Front sight acquisition and focus are tremendously aided by a bright, highly visible front sight. Practicing and using the hard focus on the front sight will allow one to shoot more quickly and more accurately. Try it the next time you go to the range to practice and compare your speed and accuracy to any other method.

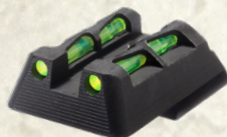


## H&K



### HK45, P30, P2000, VP9, VP40

- LiteWave® Front Sight
- Fits HK45, HK45C, P30, P30L, P2000, P2000 SK, VP9 & VP40 pistols
- Interchangeable LitePipes: ● ● ●  
HKLW01

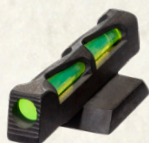


### HK45, P30, VP9, VP40

- LiteWave® Rear Sight
- Fits HK45, HK45C, P30, P30L, VP9 & VP40 pistols
- Interchangeable LitePipes: ● ● ●  
HKLW11



# KIMBER



## KIMBER 1911

- LiteWave® Front Sight
- Fits 1911 models with .330" x .075" x 60° dovetail; does not fit Kimber .22 caliber conversion or Micro
- Interchangeable LitePipes: ● ● ●
- KB2015

## KIMBER 1911

- LiteWave® Rear Sight
- Fits 1911 models with fixed rear sight except Micro
- Interchangeable LitePipes: ● ● ●
- KBLW11

# NOVAK

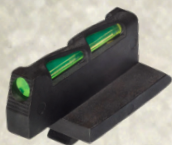


## NOVAK-STYLE SIGHTS

- LiteWave® Front Sight
- Fits Novak-style dovetail: .330" x .075" x 65°; blade height is .185"
- Interchangeable LitePipes: ● ● ●
- NVLW01

# HANDGUN SIGHTS

## RUGER



### GP100

- LiteWave® Front Sight
- Fits All GP100 revolvers with adjustable rear sight and spring plunger retained front sight
- Interchangeable LitePipes: ● ● ● GPLW01



### REDHAWK

- LiteWave® Front Sight
- Fits Redhawk and Super Redhawk revolvers with spring plunger retained front sight; also fits Super Blackhawk Hunter revolvers
- Interchangeable LitePipes: ● ● ● RHLW01



### LCR

- Overmold Front Sight
- Fits LCR and LCR-X chambered in .38 and .357
- LCR2010-G ●
- LCR2010-R ●



### SUPER BLACKHAWK

- LiteWave® Front Sight
- Fits stainless steel Super Blackhawk, Blackhawk & Bisley revolvers with pinned front sight; does not fit models chambered in .45 Colt
- Interchangeable LitePipes: ● ● ● RBLW01



### SUPER REDHAWK ALASKAN

- Overmold Front Sight
- Fits Super Redhawk Alaskan revolvers
- RA2011-G ●
- RA2011-R ●



### "P" SERIES, SP101

- LiteWave® Front Sight
- Fits All "P" Series pistols; does not fit the P-345. Also fits the SP101, except in .327 Fed
- Interchangeable LitePipes: ● ● ● RGPLW01



# RUGER



## MK II, III AND IV ADJUSTABLE REAR SIGHT

- All steel, click elevation and windage
  - Fits All MK II, III and IV models with adjustable rear sight, including 22/45 and 22/45 LITE
  - Interchangeable LitePipes: ●●●
- MKAD211



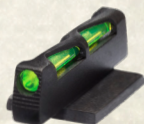
## MK I, II, III, IV & BROWNING BUCK MARK

- LiteWave® Front Sight
  - Fits Ruger Mark I, II, III and IV steel bull barrel pistols; 22/45 with adjustable rear sight (does not fit 22/45 LITE); Single-Six revolvers with adjustable rear sight. Also fits Browning Buck Mark pistols with bull barrel.
  - Interchangeable LitePipes: ●●○
- HRBLW01



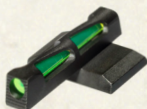
## 22/45 LITE

- LiteWave® Front Sight
  - Fits 22/45 LITE pistols with adjustable rear sight
  - Interchangeable LitePipes: ●●○
- RG2245LLW01



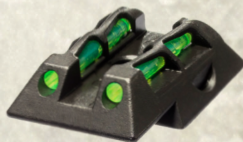
## SR9, SR40, SR45

- LiteWave® Front Sight
  - Fits SR9, SR9C, SR40, SR40C & SR45 pistols
  - Interchangeable LitePipes: ●●○
- SRLW01



## LC9, LC380

- LiteWave® Front Sight
  - Fits LC9 & LC380 pistols
  - Interchangeable LitePipes: ●●○
- LCLW01



## LC9, LC380

- LiteWave® Rear Sight
  - Fits LC9 & LC380 pistols
  - Interchangeable LitePipes: ●●●
- LCLW11

# HANDGUN SIGHTS

## RUGER



### AMERICAN PISTOLS

- LiteWave® Rear Sight
  - Fits Full Size & Compact models
  - Interchangeable LitePipes: ● ● ●
- RGALW11



### AMERICAN PISTOLS

- LiteWave® Front Sight
  - Fits Full Size & Compact models
  - Interchangeable LitePipes: ● ● ●
- RGALW01



### SR22

- LiteWave® Front Sight
  - Fits SR22 pistols
  - Interchangeable LitePipes: ● ● ●
- SR22

## Shooting Tip #22: Tactical Sight Picture and Stance by Mark Hotaling

### **Hunting sight picture and stance:**

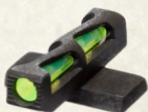
While hunting birds or shooting clays, the shooter will have an off-set stance with his shooting side foot set back behind him. The sight picture should be two eyes open, focusing on the target with the sight in his peripheral vision.

### **Tactical sight picture and stance:**

Very different than a hunting stance, the tactical shot gunner should have both feet roughly shoulder width apart, toes pointed at the target. The shoulders are nearly squared up with the target and the shooting side foot is only a couple of inches back from the other. The sight picture should be that of shooting a rifle or pistol – front sight aligned with the rear sight and when the trigger is pressed, his eye is solely focused on the front sight. With the proper tactical sight alignment, sight picture and front sight focus, the tactical shotgun can certainly be employed in a surgical manner and the HiViz sight makes target acquisition much faster and more accurate.

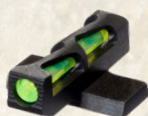






## P-SERIES

- LiteWave® Front Sight
  - Fits P-Series pistols with machined slide; front sight height #8
  - Interchangeable LitePipes: ● ● ○
- SGLW08



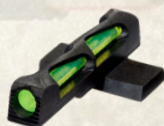
## P-SERIES

- LiteWave® Front Sight
  - Fits P-Series pistols with machined slide; front sight height #6
  - Interchangeable LitePipes: ● ● ○
- SGLW06



## P-SERIES

- LiteWave® Rear Sight
  - Fits All P-Series pistols with fixed rear sight height #8; does not fit the P-320 & P-250
  - Interchangeable LitePipes: ● ● ●
- SGLW18



## P-SERIES

- LiteWave® Front Sight
  - Fits P-Series pistols with stamped steel slide; front sight height #6
  - Interchangeable LitePipes: ● ● ○
- SG2015



*Lanny Barnes*

**HIVIZ ProStaff, 3-Time Olympic Biathlete**

*Professional 3-Gun competitor, she made the 3GN Pro Series and has won 4 major High Lady match titles. Lanny is also teaching courses to military, law enforcement and competitive shooters on how to shoot with an elevated heart rate and under stress.*

# HANDGUN SIGHTS

## SMITH & WESSON



### M&P ADJUSTABLE SIGHT SET

- Fits full size M&P and Pro pistols in 9mm, 40 S&W & 45 ACP; does not fit M&P CORE
- Adjustable for elevation
- Front: Interchangeable LitePipes: ● ● ○
- Rear: Interchangeable LitePipes: ● ● ●  
SWMPE21

### M&P, M&P SHIELD

- LiteWave® Front Sight
- Fits M&P full size and compact models and M&P Shield; does not fit M&P 22
- Interchangeable LitePipes: ● ● ○  
SW2014



### M&P

- LiteWave® Rear Sight
- Fits M&P full size and compact models; does not fit M&P 22
- Interchangeable LitePipes: ● ● ●  
MPLW11

### M&P SHIELD

- LiteWave® Rear Sight
- Fits M&P Shield models chambered in 9mm, 40 S&W & 45 ACP
- Interchangeable LitePipes: ● ● ●  
MPSLW11



### 1911

- LiteWave® Front Sight
- Fits all production model 1911's & 1911 E Series
- Interchangeable LitePipes: ● ● ○  
SW11LW01



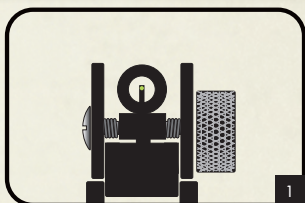
### M&P 22

- LiteWave® Front Sight
- Fits full size M&P 22 only; does not fit compact models
- Interchangeable LitePipes: ● ● ○  
MP2012



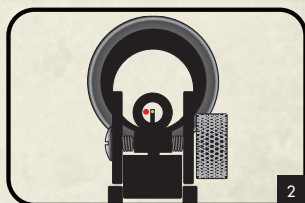


## Shooting Tip #21: Co-Witnessing



Co-witnessing uses one sight system to zero or confirm zero of another sight system. In this tip, we are using back-up iron sights to co-witness an optic device because optic devices are susceptible to damage or failure. Co-witnessing an optic AR2008 makes it viable to switch an optic device between rifles or for confirming zero if the optic has been removed or suffered damage.

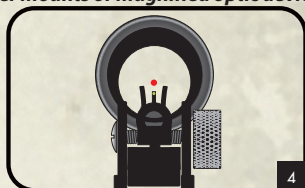
First, insure zero of HiViz front/peep rear sights (1) at the desired range (usually zeroed at 25 yards and confirmed at 100



yards). Next, install the optic device and view the dot through the peep sight with the HiViz sight centered as if shooting (2). Adjust the optic device until the dot is superimposed or forms a figure 8 on the HiViz front sight (3).

Take your first shot using the optic device. Raise your head until the dot appears in the center of the optic (4). Test fire to confirm point-of-impact at 100 yards and make any minor adjustment necessary.

**Note:** This technique will not work with higher mounts or magnified optic devices



# HANDGUN SIGHTS

## SMITH & WESSON



### PINNED SIGHT

- Overmold Front Sight
- Fits 2.5" or longer barrel revolvers with pinned front sight and adjustable rear sight

SW1002-O ●

SW1002-G ●

SW1002-R ●



### PINNED SIGHT

- Overmold Front Sight
- Fits 1.8" and 2.1" barrel revolvers with pinned front sight and fixed rear sight

SW1001-G ●

SW1001-R ●



### 617, 647, 648

- Overmold Front Sight
- Fits All 617, 647 & 648 revolvers

SW617-G ●

SW617-R ●



### PINNED SIGHT

- Interchangeable Sight
- Fits 2.5" or longer barrel revolvers with pinned front sight and adjustable rear sight, comes with red, green and white LitePipes

SWLW1002 ● ● ●

### "DX" REVOLVERS

- Overmold Front Sight
- Fits S&W revolvers with DX-style front sights

SW3002-G .208" Sight Height ●

SW3002-R .208" Sight Height ●

SW3001-G .250" Sight Height ●

SW3001-R .250" Sight Height ●

SW3003-G .310" Sight Height ●

SW3003-R .310" Sight Height ●



SW3002



SW3001

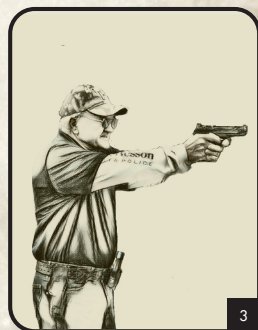
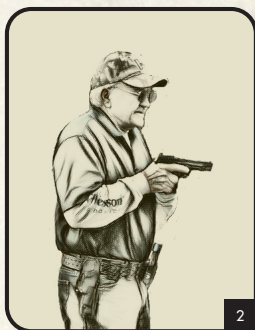
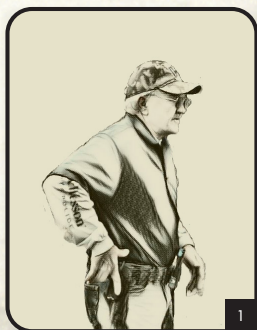


SW3003



# Shooting Tip #29: Draw from Holster

When drawing from a holster, there are 3 steps to remember. Position 1 is going from hands relaxed at sides to placing the strong hand onto the handgun, establishing a good high master grip and bringing the support hand tight against the stomach in preparation of establishing grip in position 2. Position 2 is drawing the gun up and out from the holster, maintaining a good grip and keeping the strong hand finger along the slide for safety. Next you present it in front of you, muzzle pointing down range with the support hand meeting the firearm to establish a good grip on the handgun. Position 3 would be to find the front sight in your peripheral vision and push the gun forward and up until it reaches your line of sight and you have the sights aligned with the target. This is the final step and where you would begin taking up the slack on the trigger for a good trigger press as soon as your sights are aligned on your target. Practice positions 1-3 until you can properly and smoothly draw the firearm and acquire the sights quicker.



*Jerry Miculek*

**HIVIZ ProStaff, 7 Time USPSA 3-Gun  
Champion, 4 Time USPSA Multi-Gun  
Champion, Multi-time ICORE Champion among others.**

**"HIVIZ Sights give you a great contrast between the target and  
the front sight for a constant presentation of the gun. They are  
one of my best kept shooting secrets"**

# HANDGUN SIGHTS





## SPRINGFIELD



### 1911

- LiteWave® Front Sight
- Fits 1911 Production Models, including Range Officer; does not fit GI & Mil Spec Models
- Interchangeable LitePipes: ●●●○



### 1911

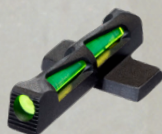
- LiteWave® Rear Sight
- Fits 1911 Production Models; does not fit GI & Mil Spec Models
- Interchangeable LitePipes: ●●●●



### EDGE

- Interchangeable Front Sight
- Fits STI Edge and Edge variants
- Interchangeable LitePipes: ●●●○

STI2008



### XD

- LiteWave® Rear Sight
- Fits XD, XD-S, XD-M and XD-E pistols; does not fit the XD 5.25
- Interchangeable LitePipes: ●●●●



### XD

- LiteWave® Front Sight
- Fits XD, XD-S & XD-M and XD-E pistols; does not fit the XD 5.25
- Interchangeable LitePipes: ●●●○

XD2014

## TAURUS



### PT 1911

- Interchangeable Front Sight
- Fits PT 1911 pistols
- Interchangeable LitePipes: ●●●○

TR1911

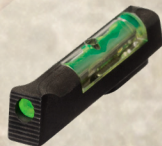


### P22

- Interchangeable Front Sight
- Fits P22 & PPQ 22; sight height .215" (same as Walther #3)
- Interchangeable LitePipes: ●●●○

WAL2012

## WALTHER



### P99, SW99, PPQ

- Overmold Front Sight
- Fits CCP, PPQ M2, PPX, P99 and SW99
- SW3004-G ●
- SW3004-R ●

# SHOTGUN SIGHTS





# HIVIZ MAGNETIC SIGHTS, BRIGHT AND EASY TO INSTALL

## WHEN YOU'RE LOOKING FOR THE BEST, TRUST THE ORIGINAL.

In 1996 HIVIZ® created the original magnetic shotgun sight and continues to be the industry leader in this category. HIVIZ magnetic shotgun sights use powerful, rare earth magnets to attach sights easily yet firmly to the rib of nearly any shotgun. Featuring easily replaceable LitePipes in multiple colors, HIVIZ has a magnetic shotgun sight that is perfect for you.

- Attaches directly behind factory bead
- Available in a variety of styles, colors and sight diameters for every shooter's preference

**NOTE** \*Sight must fit your exact shotgun rib width for proper installation. Not compatible with carbon fiber or aluminum ribs.

## M-SERIES MAGNETIC SIGHTS

When versatility is vital, the M-Series line of magnetic sights has you covered. The snap-on magnetic base is available in three different sizes to fit a wide variety of rib widths. All M-Series sights come with green, red, and the unique HIVIZ two-tone LitePipe. Pair your favorite shotgun with one of our favorite magnetic sights. Interchangeable LitePipes: ●●●●●●●●

**M200** Ultra Narrow M-Series. Fits ribs from .171" to .265"  
(11/64" to 17/64") (4.2mm to 6.7mm)

**M300** Narrow M-Series. Fits ribs from .218" to .328"  
(7/32" – 5/16") (5.5mm to 8.3mm)

**M400** Wide M-Series. Fits ribs from .328" to .437"  
(21/64"–7/16") (8.3mm to 11.1mm)



## TWO-IN-ONE

Check out the HIVIZ Two-In-One magnetic sight. We've cleverly combined our green and orange Litepipes into a single sight so you can change the color of your sight picture in seconds. All Two-In-One sights come with one orange/green round pipe sight and one orange/green triangular pipe sight. Change it fast with Two-In-One.

Interchangeable LitePipes: ●●●●●●●●

**TO200** Ultra Narrow Two-In-One. Fits ribs from .171" to .265"  
(11/64" to 17/64") (4.2mm to 6.7mm)

**TO300** Narrow Two-In-One. Fits ribs from .218" to .328"  
(7/32" – 5/16") (5.5mm to 8.3mm)

**TO350** Wide Two-In-One. Fits ribs from .330" to .355"  
(21/64" to 23/64") (8.4mm to 9mm)

**TO400** Extra-Wide Two-In-One. Fits ribs from .360" to .440"  
(23/64" to 7/16") (9mm to 11.1mm)



# SHOTGUN SIGHTS





## BIRDBUSTER®

This "one-size fits all" magnetic sight fits multiple rib widths and offers triangular and round LitePipes in red and green. A popular choice for the hunter using a magnetic sight on a variety of shotguns, the Birdbuster is a HIVIZ® hunting favorite.

Interchangeable LitePipes: ● ● ▲ ▲

BB2005



## S-SERIES MAGNETIC SIGHT

Our most economical magnetic sight, the S-Series offers the bare basics to a shooter who knows exactly what color sight they like. Available in three rib widths in two colors, this sight presents a bright affordable sight picture to any shotgun shooter.

Sight choices: ● ●

**S200-G** Green Ultra Narrow S-Series. **S200-R** Red Ultra Narrow S-Series.  
Fits ribs from .171" to .265" (11/64" to 17/64") (4.2mm to 6.7mm)

**S300-G** Green Narrow S-Series. **S300-R** Red Narrow S-Series.  
Fits ribs from .218" to .328" (7/32" – 5/16") (5.5mm to 8.3mm)

**S400-G** Green Wide S-Series. **S400-R** Red Wide S-Series.  
Fits ribs from .328" to .437" (21/64" - 7/16") (8.3mm to 11.1mm)

MSRP



## REMINGTON® ETA



Developed specifically for the working-man's gun, the Remington ETA Sight (Easy Target Acquisition) is designed specifically to fit the Remington 870, 11-87, and 1100 models with 9/32" rib.

Interchangeable LitePipes: ● ● ● ● ▲ ▲

- Two diameter sizes of round green LitePipes
- Two diameter sizes of round red LitePipes
- One green and one red triangular LitePipe

RM2006

## PLAIN BARREL

Also available in a tactical model... check out page 38.

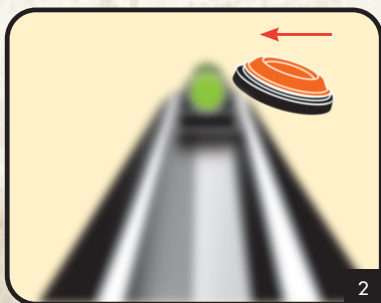
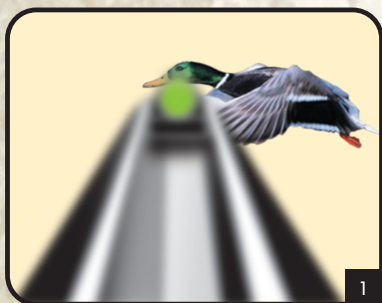


HIVIZ has something for every shotgun, including shotguns without ribs. This simple snap-on sight offers interchangeable LitePipes in an easy-to-attach design for any plain-barrel shotgun. Offered with green and red LitePipes in .175 and .135 diameter. **MPB** Fits all 12, 16, and 20 gauge plain barrel shotguns without ventilated ribs. Interchangeable LitePipes: ● ●

# SHOTGUN SIGHTS



## Shooting Tip #25: Visual Focus



Competitors at the top of their game have learned the vital importance of hard focus on their target. The proper visual technique is to pick a specific target or bird and focus intently on it. If it's a game bird one's focus should be on its head (1). On clay targets one should focus on the leading edge (2). This intense focus should be maintained through the delivery of the shot including follow-through. For the hunter this means staying focused on one bird until you see it take the shot and then go after the second bird for a double. Likewise the target shooter should maintain focus on the first target until it starts to break apart or it is clear that it was missed. Using intense specific focus will result in far fewer misses.



## WHY A BEAD REPLACEMENT?

### BEAD SIGHT ADVANTAGES:

- A permanent bead that can't be lost or misplaced in transport or when hunting in thick brush or in blinds.
- Low profile similar to factory bead.
- Interchangeable LitePipes giving you a variety of colors for a variety of conditions.
- Some bead sights offer a variety of sight diameters and shapes.
- Comes with screws in five thread sizes to fit most shotguns.

## LITEWAVE® COMPSIGHT®



The HIVIZ CompSight has become the standard for competitive shotgun shooters and is the choice of national and Olympic champions. Utilizing a low-profile steel base, LiteWave CompSight offers all the advantages of the light gathering technology of LiteWave combined with the unsurpassed durability that the “wave” exoskeleton provides. Includes multiple diameters of LitePipes in red, green, and white along with a LitePipe storage/changing key.

PMLW01 ● ● ● ● ● ● ● ●

PM1002 Original Interchangeable  
CompSight ● ● ● ● ● ● ● ●



# SHOTGUN SIGHTS

## FLAME®

The Flame sight packs HIVIZ® brightness into a low-profile, compact package. It's the perfect for the shotgun shooter who needs an ultra-rugged sight they can depend on. Its low-profile design offers durability, and is a great choice for the rigors of the outdoor hunting environment.

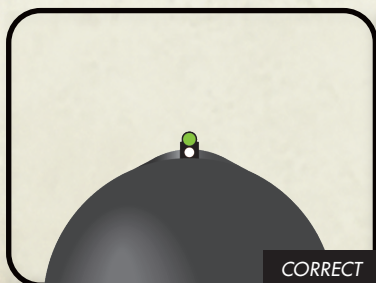
FL2005-G ●

FL2004-R ●



## Shooting Tip #23: Mid-bead

*The mid-bead on a shotgun serves a very specific purpose for both the target shooter and the hunter. This purpose is to verify proper gun fit and a consistent gun mount. Consistent results on moving targets are dependent on a correct and consistent gun mount. A properly fitted shotgun will easily mount to the correct sight picture (see illustrations). For clay target shooters that utilize a pre-mounted gun (skeet, trap and sporting clays) the shotgun can be maneuvered in the shoulder pocket until the proper sight picture is attained prior to*



*calling for the target. For the low mount shooter (FITASC and hunting) one can practice the gun mount using the mid-bead to verify proper sight picture and continue that practice grooming the ability to duplicate*



Stock too high



Stock too low



Improper cast



Improper cast

INCORRECT



## MINI COMP



If you're looking for a smaller, more affordable alternative to the CompSight, the HIVIZ Mini-Comp is a popular choice. Like all HIVIZ bead sights, MiniComp is bright and easy to install. It is the only HIVIZ bead sight offering an orange LitePipe in addition to the standard green and red. ● ● ●

PM2011

## SPARK II



The Spark II is one of the first compact sights that HIVIZ developed and remains a top seller today. It's tiny but brilliant with an affordable price tag. Unlike the new Spark III, the LitePipes are not interchangeable, so pick the color that best suits your needs.

BD1007 ●

BD1008 ●

## TRICOMP



TriComp brings pinpoint accuracy to target acquisition. This innovative interchangeable design is loaded with options, equipped with both triangular and round LitePipes in a variety of colors and sizes. Any hunter or shooter can create a sight picture that suits their specific needs. ● ● ● ▲ ▲ ▲

PM2003

## SPARK III



Spark III brings HIVIZ's ingenious interchangeability to one of the brightest, most economical sights on the market. This big, bright dot is .090" in diameter, and comes with red, green, and white LitePipes bringing affordable accuracy to any shotgun. ● ● ●

SK2011

# SHOTGUN SIGHTS

## FOUR-IN-ONE

This revolutionary sight will allow you to use one sight and one shotgun throughout the year for all your hunting and recreational needs. The Four-In-One features a fully adjustable rear sight that can be easily removed so you can quickly swap to a front-sight only bead for birds or target shooting. Quick, easy interchangeable LitePipes for both the front and rear give you the choice of four distinct color combinations.

Front: ● ● ● ● Rear: ● ● ● ●

FO2008-I fits ribs 1/4 to 9/32 (6.3mm to 7.5mm)

FO2008-II fits ribs 5/16 to 3/8 (7.9mm to 9.7mm)





## TRIVIZ®

Arguably one of the coolest turkey sights on the planet, TRIVIZ offers outstanding durability combined with an unobstructing sight picture. The unique triangular sight picture helps any level of experienced hunter enjoy success. Fits most shotguns with vent ribs from 1/4" to 3/8" wide with removable front beads. Fully adjustable for elevation and windage. Set offers (1) round front and (3) triangular front LitePipes in various heights.

TT1001



## C-SERIES

Combining our best selling M-Series magnetic front sight with our two-bead rear sight = versatility in the field. With the rear sight fully adjustable for windage and elevation, this sight can help you get your favorite slug or turkey gun dialed. Remove the rear sight and you'll have great target acquisition for upland birds or waterfowl. All sets come with a green and orange front LitePipe and rear green pipes. ● ●

**C200-2 Ultra Narrow C-Series.** Fits ribs from .171" to .265"  
(11/64" to 17/64") (4.2mm to 6.7mm)

**C300-2 Narrow C-Series.** Fits ribs from .218" to .328"  
(7/32" to 21/64") (5.5mm to 8.3mm)

**C400-1 Wide C-Series.** Fits ribs from .328" to .437"  
(21/64" to 7/16") (8.3mm to 11.1mm)



## REMINGTON®

Similar to the C-Series, HIVIZ® has taken the Remington ETA (Easy Target Acquisition)—and paired it with an adjustable rear dual bead sight giving you improved accuracy for deer and turkey hunting. Designed specifically for Remington 870 Express and 11-87 Sportsman shotguns with 9/32" vent ribs, this sight comes with one red and one green tall LitePipe, one green round short LitePipe, and rear green pipes. Front: ● ● ● Rear: ● ●

RM2013





# RIFLE SIGHTS





## HENRY® RIFLE SETS

Dress up your favorite plinker or hunting rifle with the brightest sights on the market. Now available for Henry rifles, HIVIZ® offers four new tack-driving sets with its patented LiteWave® design front sight. These sights deliver an amazingly bright sight picture for quick and easy target acquisition to boost your shooting performance. All sights are fully adjustable for windage and elevation. Includes red, green, and white LitePipes for the front sight with red and green LitePipes for the rear sight. ● ● ●

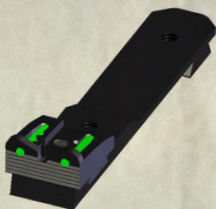
**HHVS41** Fits:: H006, ES, ML, OA, R, S, SD, TT and WL.

**HHVS450** Fits: H001T,TER,TPM, H003T, H004,AB,CM2,ES,FM,GE,MS2,S,SE,SE2,STS,TT and Y.

**HHVS500** Fits: : H001TM,TMER,TMLP,TMRP,TV, H003TM, H0004M,MD3,SEM,SEV,SM,SV,V,VD3, H006M,MD3,MML,MR, MS,MSD,C, CBS,CD3,CML,CR,CS,CSD H009B,CC,BWL, H010B,CC,BWL, H012,MR41 and R.

**HHVS570** Fits: H009CC, H010,AW,WL, H012CR,M and MR.

**HHVS620** Fits: H009 and H009AW



## HENRY® H001 FRONT SIGHT

Like all HIVIZ sights, this sweet rimfire front sight brightens up your sight picture, improving accuracy and making these lever-action Henry's the most fun and precise rifles on the range. This sight comes with four interchangeable front LitePipes in green, red, white, and black. Combine it with our Universal Rear sight for an even better sight picture. ● ● ● ●

**HHVS001** Fits: H001, H001L, and H001Y models chambered in .22LR

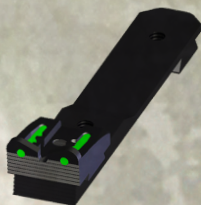
**HHVS001M** Fits: H001M models chambered in .22 Mag



## UNIVERSAL REAR SIGHT

The HIVIZ Universal Rear Rifle Sight offers shooters the opportunity to brighten up the rear sight picture on a wide selection of rifles. Mounting in a standard 3/8" dovetail, this sight is easy to install, has full windage and elevation adjustments, and features interchangeable LitePipes in red and green. Make plinking more fun by adding the universal rear rifle sight to your favorite rifle. ● ●

**UNI2006**

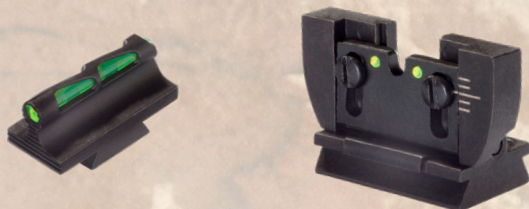


# RIFLE SIGHTS





# RUGER® 10/22 SIGHT SET



Whether you shoot America's favorite rifle competitively, in the field or at the range, the HIVIZ® Ruger 10/22 sight set is something that no shooter should be without. The front sight features the latest LiteWave® technology for bright, reliable target acquisition. The rear sight has been carefully designed around the original Ruger design and is both foldable and adjustable for elevation. Both front and rear sight feature interchangeable LitePipes.

Fits all Ruger 10/22 Standard rifles with 18.5" barrel, Carbine and Take-down models. ● ● ●  
RG1022

## UNIVERSAL FRONT SIGHT

The Front Dovetail Sight series from HIVIZ are designed to replace front sights for all types of rimfire and centerfire rifles that have a 3/8" dovetail front sight.

Comes with green and red interchangeable front LitePipes giving all shooters the right color for the right conditions—anytime, anywhere. ● ●

DOVM-260: 1/4" height

DOVM-315: 5/16" height

DOVM-380: 3/8" height

DOVM-420: 7/16" height

DOVM-500: 1/2" height



DOVM-260



DOVM-315



DOVM-380



DOVM-420



DOVM-500

# RIFLE SIGHTS



*Mark Hotelling*

**HIVIZ ProStaff, Navy SEAL (former) and  
President of Makhaira Group**

*"When a critical incident occurs, you will always react in only one of two ways – either "naturally" or how you have repeatedly trained. Seek out and invest in only the best training so that under stress, your complete concentration is on the technical matter of placing shots properly."*

## MPB-TAC



The MPB-TAC is one of the most versatile tactical shotgun sights available today. The sight body is an overmolded steel spring that clamps down securely to most 12 gauge shotgun barrels. It is easily installed and easily removed with no tools required because the sight self-centers behind the front bead for perfect alignment. It can fit on shotgun models with extended magazines as unique cutouts ensure the sight does not interfere with the magazine clamp. The interchangeable LitePipe is enclosed by four small clamps that provide protection against breakage without obstructing the target. ●● MPB-TA

## AR POST



Your AR rifle is not complete without a HIVIZ AR sight. The nearly indestructible AR2008 comes with interchangeable LitePipes in both green and red for extra customization and features a detent plunger to tighten engagement and prevent any side-to-side movement of the sight. This easy-to-install sight replaces all types of AR 15 sights, both fixed and detachable, as well as M4 rifles with A-Frame or folding front sights. ●● AR2008

## AK POST



Featuring all the benefits of the popular HIVIZ AR sight but built for your AK. Robust and affordable, this sight offers interchangeable LitePipes in green and red. Includes a sight tool for easy installation and sight adjustment. ●● AK2010



# SLIP ON RECOIL PAD



## **SP-S Slip-On Pad - small, 1" thick.**

Fits stocks from 4.5"H x 1.375"W up to 4.6875"H x 1.5"W. See selection chart at right.

## **SP-M Slip-On Pad - medium, 1" thick.**

Fits stocks from 4.6875"H x 1.625"W up to 4.875"H x 1.6875"W. See selection chart at below.

### **SP-S (Small) 1" thick Slip-On Pad fits:**

**4 1/2" x 1 3/8" up to 4 11/16" x 1 1/2" stocks**

**BROWNING  
MOSSBERG  
WINCHESTER  
NEW ENGLAND  
FIREARMS  
MARLIN**

A Bolt, A Bolt Medallion (most models) BLR model 81.  
Most wood and synthetic stocks youth 500 models.  
Most model 94 lever actions.

Pardner and Handi-Rifles; most youth models.  
Most Marlin lever action rifles.

### **SP-M (Medium) 1" thick Slip-On Pad fits:**

**4 11/16" x 1 5/8" up to 4 7/8" x 1 11/16" stocks**

**BAIKAL  
BENELLI**

Most models.  
Nova, M-1 Field, Super Black Eagle 12 ga.  
(non-Comfortech).

**BERETTA  
BROWNING  
MOSSBERG  
STOEGER  
WINCHESTER  
NEW ENGLAND  
FIREARMS**

Models with 5 inch stocks.  
Gold, Silver and Maxus Synthetic Stocks.  
500, 835, 930 and 935; most wood and synthetic stocks except youth models.  
Most 12 ga. models.  
Most 1200, 1300 and 1400 models.  
Most Pardner and Handi-Rifles models.

# SHOTGUN SIGHTS

Use this handy chart to help find the sight that fits your brand of shotgun. For models and brands not listed, please call for assistance selecting a sight.

## BERETTA

MODEL	MAGNETIC SIGHTS	BEAD REPLACEMENT	REAR SIGHTS OR SIGHT SETS
686 687 models with narrow rib AL390 AL304 AL39 Field AL391 Urika Field A300 A400 Xplor Field SV10 Perennia	Birdbuster (BB2005) M-Series, Ultra Narrow Model (M200) Magni-Hunter (MGH2007-I) S-Series, Ultra Narrow Model (S200) Two-In-One, Ultra Narrow Model (TO200)	Flame (FL2005) Magni-Comp (MGC2006) CompSight (PM1002; PMLW01) TriComp (PM2003) MiniComp (PM2011) Spark III (SK2011) Spark II (BD1007)	C-Series, Ultra Narrow Model (C200-2) Four-In-One (FO2008-I) TriViz (TT1001)
T & ST Rib Pintail Auto Silver Pigeon Skeet 682 Sporting & Gold Skeet	Birdbuster (BB2005) M-Series, Narrow Model (M300) Magni-Hunter (MGH2007-I) S-Series, Narrow Model (S300) Two-In-One, Narrow Model (TO300)	Flame (FL2005) Magni-Comp (MGC2006) CompSight (PM1002; PMLW01) TriComp (PM2003) MiniComp (PM2011) Spark III (SK2011) Spark II (BD1007)	
682 Trap Gold Trap Silver Pigeon Trap 687 Diamond Pigeon Trap	M-Series, Wide Model (M400) S-Series, Wide Model (S400) Two-In-One, Extra Wide Model (TO400)	Spark II (BD1007) Flame (FL2005) Magni-Comp (MGC2006) CompSight (PM1002; PMLW01) TriComp (PM2003) MiniComp (PM2011)	
Gold Onyx Sporting Models Diamond Pigeon Sporting Models		Flame (FL2005) Magni-Comp (MGC2006) CompSight (PM1002; PMLW01) TriComp (PM2003) MiniComp (PM2011) Spark III (SK2011)	

## BENELLI

MODEL	MAGNETIC SIGHTS	BEAD REPLACEMENT	REAR SIGHTS OR SIGHT SETS
Super Black Eagle I, II, III M2 Field Nova Super Nova (All 12 Ga.) Models with Ventilated Rib	Birdbuster (BB2005) M-Series, Narrow Model (M300) Magni-Hunter (MGH2007-II) S-Series, Narrow Model (S300) Two-In-One, Narrow Model (TO300)	Flame (FL2005) Magni-Comp (MGC2006) CompSight (PM1002; PMLW01) TriComp (PM2003) MiniComp (PM2011) Spark III (SK2011) Spark II (BD1007)	C-Series, Narrow Model (C300-2) Four-In-One (FO2008-II) TriViz (TT1001)
M2 Field Vinci Super Vinci All 20 Ga. Model with Ventilated Rib	Birdbuster (BB2005) M-Series, Ultra Narrow Model (M200) Magni-Hunter (MGH2007-I) S-Series, Ultra Narrow Model (S200) Two-In-One, Ultra Narrow Model (TO200)	Flame (FL2005) Magni-Comp (MGC2006) CompSight (PM1002; PMLW01) TriComp (PM2003) MiniComp (PM2011) Spark III (SK2011)	C-Series, Ultra Narrow Model (C200-2) Four-In-One (FO2008-I) TriViz (TT1001)
Cordoba Super Sport Sport II Legacy 828U Ultraight (All Models in 12 Ga. & 20 Ga.)		Flame (FL2005) Magni-Comp (MGC2006) CompSight (PM1002; PMLW01) TriComp (PM2003) MiniComp (PM2011) Spark III (SK2011)	C-Series, Ultra Narrow Model (C200-2) Four-In-One (FO2008-I) TriViz (TT1001)



# BROWNING

MODEL	MAGNETIC SIGHTS	BEAD REPLACEMENT	REAR SIGHTS OR SIGHT SETS
Gold Field Models (28 & 410 Ga.) Silver Field Models Maxus Field Models Citori Citori Satin Hunter (20 Ga.) 625 Sporting (20, 28 & 410 Ga.) Cynergy (20, 28 & 410 Ga.) 725 Field New A5 Auto	Birdbuster (BB2005) M-Series, Ultra Narrow Model (M200) Magni-Hunter (MGH2007-I) S-Series, Ultra Narrow Model (S200) Two-In-One, Ultra Narrow Model (T0200)	Flame (FL2005) Magni-Comp (MGC2006) CompSight (PM1002; PMLW01) TriComp (PM2003) MiniComp (PM2011) Spark III (SK2011)	C-Series, Ultra Narrow Model (C200-2) Four-In-One (F02008-I) TriViz (TT1001)
BPS, All Models Gold (10 Ga.) Citori Satin Hunter (12 Ga.) 625 Sporting (12 Ga.) Cynergy (12 Ga.) Citori White Lightning Cynergy Field (12 Ga.)	Birdbuster (BB2005) M-Series, Narrow Model (M300) Magni-Hunter (MGH2007-I) S-Series, Narrow Model (S300) Two-In-One, Narrow Model (T0300)	Flame (FL2005) Magni-Comp (MGC2006) CompSight (PM1002; PMLW01) TriComp (PM2003) MiniComp (PM2011) Spark III (SK2011)	C-Series, Narrow Model (C300-2) Four-In-One (F02008-II) TriViz (TT1001)
Original A-5 Auto with ribbed barrel – <i>Due to the reciprocating barrel on the A-5 we recommend a screw-attach sight on all models.</i>		Flame (FL2005) Magni-Comp (MGC2006) CompSight (PM1002; PMLW01) TriComp (PM2003) MiniComp (PM2011) Spark III (SK2011)	Four-In-One (F02008-I) TriViz (TT1001)
BT99 Cynergy CX Citori Micro Citori Grade VII	M-Series, Wide Model (M400) S-Series, Wide Model (S400) Two-In-One, Wide Model (T0350)	Flame (FL2005) Magni-Comp (MGC2006) CompSight (PM1002; PMLW01) TriComp (PM2003) MiniComp (PM2011) Spark III (SK2011)	

# CZ-USA

MODEL	MAGNETIC SIGHTS	BEAD REPLACEMENT	REAR SIGHTS OR SIGHT SETS
Redhead Over/Under, All Models Canvasback Over/Under, All Models Woodcock Over/Under, All Models Mallard Over/Under, All Models	Birdbuster (BB2005) M-Series, Narrow Model (M300) Magni-Hunter (MGH2007-I) S-Series, Narrow Model (S300) Two-In-One, Narrow Model (T0300)	Flame (FL2005) Magni-Comp (MGC2006) CompSight (PM1002; PMLW01) TriComp (PM2003) MiniComp (PM2011) Spark III (SK2011)	C-Series, Narrow Model (C300-2) Four-In-One (F02008-II) TriViz (TT1001)
Ringneck Side-by-Side, All Models Bobwhite Side-by-Side, All Models		Flame (FL2005) Magni-Comp (MGC2006) CompSight (PM1002; PMLW01) TriComp (PM2003) MiniComp (PM2011) Spark III (SK2011)	

# SHOTGUN SIGHTS

## MOSSBERG

MODEL	MAGNETIC SIGHTS	BEAD REPLACEMENT	REAR SIGHTS OR SIGHT SETS
500 535 835 935 930 505 Youth Models with ventilated rib	M-Series, Wide Model (M400) S-Series, Wide Model (S400) Two-In-One (TO350)  <i>*Magnetic sights fit non-ported barrels only</i>	Flame (FL2005) Magni-Comp (MGC2006) CompSight (PM1002; PMLW01) TriComp (PM2003) MiniComp (PM2011) Spark III (SK2011)  <i>*Screw-Attach sights fit ported or non-ported barrels</i>	C-Series, Wide Model (C400-1) Four-In-One (FO2008-II) TriViz (TT1001)

## PERAZZI

MODEL	MAGNETIC SIGHTS	BEAD REPLACEMENT	REAR SIGHTS OR SIGHT SETS
All Models		Flame (FL2005) Magni-Comp (MGC2006) CompSight (PM1002; PMLW01) TriComp (PM2003) MiniComp (PM2011) Spark III (SK2011)	

## REMINGTON

MODEL	MAGNETIC SIGHTS	BEAD REPLACEMENT	REAR SIGHTS OR SIGHT SETS
870 Express 1187 Sportsmen with ventilated rib	Birdbuster (BB2005) M-Series, Narrow Model (M300) Magni-Hunter (MGH2007-I) Remington ETA (RM2006) S-Series, Narrow Model (S300) Two-In-One, Narrow Model (TO300)	<i>*Both of these models have a pressed-in bead. In order to use a screw-attach sight, the bead will have to be removed and the rib drilled and tapped.</i> Flame (FL2005) Magni-Comp (MGC2006) CompSight (PM1002; PMLW01) TriComp (PM2003) MiniComp (PM2011) Spark III (SK2011)	C-Series, Narrow Model (C300-2) Remington ETA (RM2013)
870 Wing Master 1100 Field with ventilated rib Versa Max	Birdbuster (BB2005) M-Series, Narrow Model (M300) Magni-Hunter (MGH2007-I) Remington ETA (RM2006) S-Series, Narrow Model (S300) Two-In-One, Narrow Model (TO300)	Flame (FL2005) Magni-Comp (MGC2006) CompSight (PM1002; PMLW01) TriComp (PM2003) MiniComp (PM2011) Spark III (SK2011)	C-Series, Narrow Model (C300-2) Remington ETA (RM2013) Four-In-One (FO2008-II) TriViz (TT1001)

## RUGER

MODEL	MAGNETIC SIGHTS	BEAD REPLACEMENT	REAR SIGHTS OR SIGHT SETS
Red Label, All Models	Birdbuster (BB2005) M-Series, Narrow Model (M300) Magni-Hunter (MGH2007-I) S-Series, Narrow Model (S300) Two-In-One, Narrow Model (TO300)	Flame (FL2005) Magni-Comp (MGC2006) CompSight (PM1002; PMLW01) TriComp (PM2003) MiniComp (PM2011) Spark III (SK2011)	C-Series, Narrow Model (C300-2) Four-In-One (FO2008-II) TriViz (TT1001)



# KRIEGHOFF

MODEL	MAGNETIC SIGHTS	BEAD REPLACEMENT	REAR SIGHTS OR SIGHT SETS
All Models <i>Note: Some Krieghoff un-singles and top singles with adjustable ribs may require a special nut to attach the sight. This nut is available upon request.</i>		Flame (FL2005) Magni-Comp (MGC2006) CompSight (PM1002; PMLW01) TriComp (PM2003) MiniComp (PM2011) Spark III (SK2011)	

# SKB

MODEL	MAGNETIC SIGHTS	BEAD REPLACEMENT	REAR SIGHTS OR SIGHT SETS
All Models		Flame (FL2005) Magni-Comp (MGC2006) CompSight (PM1002; PMLW01) TriComp (PM2003) MiniComp (PM2011) Spark III (SK2011)	

# STOEGER

MODEL	MAGNETIC SIGHTS	BEAD REPLACEMENT	REAR SIGHTS OR SIGHT SETS
M3500 M3000 M3020 P3000	M-Series, Ultra Narrow Model (M200) Magni-Hunter (MGH2007-I) S-Series, Ultra Narrow Model (S200) Two-In-One, Ultra Narrow Model (TO200)	Magni-Comp (MGC2006) CompSight (PM1002; PMLW01) TriComp (PM2003) MiniComp (PM2011) Spark III (SK2011)	Four-In-One (FO2008-I) TriViz (TT1001)
P350	Birdbuster (BB2005) Birdbuster (BB2005) M-Series, Narrow Model (M300) Magni-Hunter (MGH2007-I) S-Series, Narrow Model (S300) Two-In-One, Narrow Model (TO300)	Flame (FL2005) Flame (FL2005) Magni-Comp (MGC2006) CompSight (PM1002; PMLW01) TriComp (PM2003) MiniComp (PM2011) Spark III (SK2011)	C-Series, Ultra Narrow Model (C200-2) C-Series, Narrow Model (C300-2) Four-In-One (FO2008-II) TriViz (TT1001)

# WINCHESTER

MODEL	MAGNETIC SIGHTS	BEAD REPLACEMENT	REAR SIGHTS OR SIGHT SETS
SX3, SX4, SXP Field	Birdbuster (BB2005) M-Series, Ultra Narrow Model (M200) Magni-Hunter (MGH2007-I) S-Series, Ultra Narrow Model (S200) Two-In-One, Ultra Narrow Model (TO200)	Flame (FL2005) Magni-Comp (MGC2006) CompSight (PM1002; PMLW01) TriComp (PM2003) MiniComp (PM2011) Spark III (SK2011)	C-Series, Ultra Narrow Model (C200-2) Four-In-One (FO2008-I) TriViz (TT1001)
SX2 1200 1300 1400	M-Series, Wide Model (M400) S-Series, Wide Model (S400) Two-In-One, Wide Model (TO350)	Flame (FL2005) Magni-Comp (MGC2006) CompSight (PM1002; PMLW01) TriComp (PM2003) MiniComp (PM2011) Spark III (SK2011)	C-Series, Wide Model (C400-1) Four-In-One (FO2008-II) TriViz (TT1001)

## HIVIZ PRO STAFF 2020

Members of the HIVIZ Pro Staff have won many major national and international championships in their respective disciplines.

The HIVIZ Pro Staff continues to rack up accomplishments every year. Many of the world's top competitive shooters, instructors and hunters look down the rib at a HIVIZ sight as they dominate various shooting disciplines. Each year HIVIZ works to deliver effective and innovative sights to give our Pro Staff as well as our customers the tools to win!

### ***CELEBRITY & HUNTING***

Allen Treadwell

### ***HANDGUN***

Max Michel



## ***HANDGUN & 3-GUN***

Jerry Miculek, Kay Miculek, Lena Miculek

### **Team Yackley**

Becky Yackley, Mark Yackley, Tim Yackley,  
Sean Yackley, Andrew Yackley

Tony Holmes

Lanny Barnes

## ***TRAP PRO STAFF***

Harlan Campbell

## ***MILITARY/LE***

Mark Hotaling