

# SUREFIRE®

PRODUCT CATALOG



**"I DEMAND THAT WE BUILD THE BEST, NO MATTER WHAT."**

*- DR. JOHN MATTHEWS*





SUREFIRE  
SUREFIRE.COM

SUREFIRE  
123A LITHIUM PHOSPHATE  
RECHARGEABLE  
FOR HIGH-DRAIN DEVICES  
(EX-SHOT)

SUREFIRE  
SCOUT  
LIGHT

EID  
USB  
DANGER  
HOT SURFACE  
DO NOT TOUCH

KE2-04  
143203

SUREFIRE  
FOR TRAINING  
DATE: 04/18/14





# CONTENTS

## 04 WEAPONLIGHT SYSTEMS

- 06...HANDGUN LIGHTS
- 10...MASTERFIRE®
- 14...SCOUT LIGHT PRO FAMILY
- 18...WEAPONLIGHT PARTS
- 22...FOREND LIGHTS
- 24...HELLFIGHTER SERIES

## 26 HANDHELD LIGHTS

- 28...EVERYDAY CARRY
- 30...ULTRA COMPACT
- 32...G2X SERIES
- 34...DUAL FUEL
- 36...MULTIPLE SPECTRUM

## 38 HANDS-FREE LIGHTS

## 42 BATTERIES

## 46 SUPPRESSORS

- 48...SOCOM SUPPRESSORS
- 52...SAFETY DEVICES & TRAINERS
- 54...SF RYDER SERIES
- 56...MUZZLE DEVICES

## 62 WEAPON COMPONENTS

## 66 HEARING PROTECTION

## 72 NOTES



# WEAPONLIGHT SYSTEMS



# NO-COMPROMISE FIGHTING TOOLS

SureFire pioneered the weapon-mounted light, and SureFire WeaponLights are engineered with combat-proven technology and precision manufactured with the finest materials for the utmost performance and reliability. We offer handgun-mounted lights for full-size, compact, and micro-compact pistols, and our Scout Light® models for long guns are available with a variety of switching options to tailor every model to the user's needs. Our Forend WeaponLights directly replace the factory forends on select weapon systems. Every SureFire WeaponLight delivers peace of mind in the most hostile conditions.

## DID YOU KNOW?

- + Buying a SureFire WeaponLight means you're buying the brand most trusted by military and law enforcement professionals worldwide. Our lights have been used in more hostile environments than anyone else's. We use only the very best light emitters, sophisticated digital regulation electronics, and precision optics to maximize output and runtime while shaping the light to create the optimal beam for whatever mission you face.
- + SureFire offers the most comprehensive WeaponLight family in the industry, with the widest variety of reliable, ergonomic and intuitive switching options – including accessory remote pressure switches – to deliver the light you need when you need it, every time. If you can dream it, we've probably already built it.
- + SureFire's proprietary Total Internal Reflection lens models deliver the best combination of distance light and peripheral light so you see precisely what you need to see. These precision optics deliver maximum lumen efficiency, projecting most of the light forward to a degree not possible with similar-sized reflectors. TIR illuminates the main subject of interest at longer distances with a surrounding cone containing the remainder of the emitted light.
- + SureFire's patented MaxVision Beam® models give you the best-quality light for close- to medium-range applications. They provide a broad, perfectly smooth, seamless wall of light that's tailored to the human eye response for the entire field of view, ideal to help ensure maximum situational awareness.
- + SureFire Parabolic Reflector models offer plenty of throw and spill to help you see better in low-light conditions. These reflectors deliver a crisp beam with no imperfections, so you can clearly illuminate the main subject of interest and still have ample surround light to maintain situational awareness.
- + Machined from aerospace-grade aluminum, SureFire's rugged WeaponLight bodies deliver robust reliability you can trust. Every model is Mil-Spec hard-anodized to prevent corrosion. And since sophisticated electronics don't do well in water, all SureFire bodies are O-ring and gasket sealed to keep out the elements. Inside, the electronics are protected by a conformal coating for added protection against moisture.
- + SureFire makes it easy for you to find a premium WeaponLight that runs on the power source which may be easiest for you to obtain. Available models include Dual Fuel-, lithium primary (disposable)- and AAA Nickel Metal Hydride-powered (NiMH). Many of our handgun WeaponLights utilize integrated lithium polymer batteries, and our long gun lights can be powered by rechargeable SureFire lithium batteries.
- + Every SureFire WeaponLight is backed by our No-Hassle Guarantee.







## XSC SERIES

PART #	DESCRIPTION
XSC-A	MICRO-COMPACT HANDGUN LIGHT - GLOCK 43X & 48
XSC-HELLCAT	MICRO-COMPACT HANDGUN LIGHT - SPRINGFIELD ARMORY HELLCAT
XSC-P365	MICRO-COMPACT HANDGUN LIGHT - SIG SAUER P365 SERIES
CH21	XSC SERIES LITHIUM POLYMER RECHARGEABLE BATTERY & CHARGER
BI2	XSC SERIES LITHIUM POLYMER RECHARGEABLE BATTERY

OUTPUT (LUMENS)	RUNTIME (MINUTES)	CANDELA	WEIGHT	LENGTH	BATTERIES
350	30	2,000	1.7 oz (48.2 g)	1.94 in (4.9 cm)	LITHIUM POLYMER



XSC-A



XSC-P365



XSC-HELLCAT



CH21





## XCI®

PART #	DESCRIPTION
XCI-B	ULTRA-COMPACT LED HANDGUN LIGHT NSN 6230-DI-674-5605
Z91	RAIL KIT FOR XCI



OUTPUT (LUMENS)	RUNTIME (MINUTES)	CANDELA	WEIGHT	LENGTH	BATTERIES
300	45	820	1.6 oz (45.4 g)	2.5 in (6.3 cm)	(1) AAA

## XC2®

PART #	DESCRIPTION
XC2-A	ULTRA-COMPACT LED HANDGUN LIGHT + RED LASER SIGHT NSN 1005-DI-668-8908
Z92	RAIL KIT FOR XC2



OUTPUT (LUMENS)	RUNTIME (MINUTES)	CANDELA	WEIGHT	LENGTH	BATTERIES
300/-5.0mW; 635 nm Class IIIa	30	820	2.1 oz (59.5 g)	2.5 in (6.3 cm)	(1) AAA





## X300U

PART #	DESCRIPTION
X300U-A	ULTRA-HIGH-OUTPUT LED HANDGUN LIGHT NSN 6230-01-617-8332
X300U-A-TN	ULTRA-HIGH-OUTPUT LED HANDGUN LIGHT NSN 6230-01-681-4750
X300U-B	ULTRA-HIGH-OUTPUT LED HANDGUN LIGHT NSN 6230-01-649-7363
X300U-B-TN	ULTRA-HIGH-OUTPUT LED HANDGUN LIGHT



X300U-A



X300U-B

OUTPUT (LUMENS)	RUNTIME (HOURS)	CANDELA	WEIGHT	LENGTH	BEZEL DIAMETER	BATTERIES
1,000	1.25	11,300	4.0 oz (113 g)	3.6 in (9.1 cm)	1.125 in (2.9 cm)	(2) 123A

## X300V

PART #	DESCRIPTION
X300V	INFRARED / WHITE LED HANDGUN LIGHT
X300V-B	INFRARED / WHITE LED HANDGUN LIGHT NSN 6230-01-669-1760



X300V



X300V-B

OUTPUT (LUMENS)	RUNTIME (HOURS)	CANDELA	WEIGHT	LENGTH	BATTERIES
350 / 120 mW (860 nm)	2.5 / 16.75	13,000	4.0 oz (113 g)	4.0 in (10.0 cm)	(2) 123A





## X400U

PART #	DESCRIPTION
X400U-A-GN	ULTRA-HIGH-OUTPUT LED HANDGUN LIGHT + GREEN LASER SIGHT
X400U-A-RD	ULTRA-HIGH-OUTPUT LED HANDGUN LIGHT + RED LASER SIGHT NSN 6230-01-652-9018

PART #	OUTPUT (LUMENS)	RUNTIME (HOURS)	CANDELA	WEIGHT	LENGTH	BATTERIES
X400U-A-GN	1,000 / <5 mW (515nm)	1.25 / 24 (laser)	11,300	4.9 oz (139 g)	3.75 in (9.5 cm)	(2) 123A
X400U-A-RD	1,000 / <5 mW (635nm)	1.25 / 24 (laser)	11,300	4.9 oz (139 g)	3.75 in (9.5 cm)	(2) 123A



## DG SWITCH & PART KITS

PART #	DESCRIPTION
DG-11	GLUCK 17,17L,18,19,20,21,22,23,24,31,32,34,35 RAILS, BERETTA PX4 FULL SIZE, HGK P2000 NSN 5930-01-640-9794
DG-12	SMITH & WESSON M&P
DG-13	SIG SAUER P22DR, SP2022, P227R
DG-14	SIG SAUER P226R, P320 COMPACT, HGK P30 NSN 5930-01-560-3165
DG-15	H&K USP COMPACT 40/45 (USING MR0B) NSN 5930-01-534-7002
DG-16	BERETTA 92FS/96FS (USING MR11)
DG-18	STANDARD 1911 (WITH RAILS)
DG-18A	KIMBER TLE (WITH RAILS), SPRINGFIELD TRP, 1911, SPRINGFIELD OPERATOR
DG-19	H&K USP FULL SIZE 40/45 (USING MR09) NSN 5930-01-540-3215
DG-20	BERETTA 96 VERTEX, HGK VP9
DG-22	SIG SAUER P229R, P320 FULL SIZE, FN 5.7
DG-23	SIG SAUER 226 (USING MR14A OR MR14B) NSN 5930-01-547-7717
DG-24	SPRINGFIELD XD STANDARD FRAME, HGK 45 FULL SIZE

PART #	DESCRIPTION
Z89	MOUNT PARTS KIT, X300U-A, X300V
Z90	MOUNT PARTS KIT, X300U-B, X300V-B, X400U/V
Z90-TN	MOUNT PARTS KIT, X300U-B-TN





## MASTERFIRE® HOLSTER PRO

PART #	DESCRIPTION
HDI-R-PRO	RAPID DEPLOY HOLSTER WITH COVER - RIGHT HANDED - BLACK
HDI-L-PRO	RAPID DEPLOY HOLSTER WITH COVER - LEFT HANDED - BLACK
HDI-R-TN-PRO	RAPID DEPLOY HOLSTER WITH COVER - RIGHT HANDED - TAN
HDI-L-TN-PRO	RAPID DEPLOY HOLSTER WITH COVER - LEFT HANDED - TAN



### LEVEL 3 RETENTION

Proprietary lug-and-cam system locks the firearm in place, utilizing primary and secondary locking systems released by an ergonomic thumb latch and secondary lock

### HOLSTER POSITION

Positions holster at optimized angle for a fast, consistent draw stroke

### ADJUSTABILITY

Customizable for personal preferences and adjustable to fit most any pistol belt

### COMPATIBILITY

Accommodates a wide variety of handguns; interfaces with Safariland QLS system

### VIRTUALLY UNBREAKABLE

With the secondary lock mechanism engaged, it takes 600 lbs. of force to break a weapon out of the MasterFire holster

### INSTANT ACTIVATION

The MasterFire's switch can be set to automatically activate any SureFire H-Series WeaponLight on the draw, saving precious time in high-stress situations

### LOCKOUT FEATURE

The MasterFire deactivates the WeaponLight when the gun is holstered, and can be set to prevent light activation on the draw

### SUPPRESSORS & RED DOTS

Open design accommodates red dot optics and suppressors, including the SF® RYDER Series



REMOVABLE COVER  
(Included)



REMOVABLE LEG STRAP  
(Included)



FIREPAK  
(Not Included)

## FIREPAK®

PART #	DESCRIPTION
FIREPAK-A	FLASHLIGHT AND BATTERY PACK

LEVELS	OUTPUT (LUMENS)	RUNTIME (HOURS)	CANDELA
1	100	10.25	3,500
2	300	3.5	
3	600	1.75	
4	1,500	1.75	

WEIGHT	LENGTH	BATTERIES
4.5 oz (127.5 g)	4.6 in x 2.2 in x .80 in	LITHIUM POLYMER





## XH30™

PART #	DESCRIPTION
XH30	ULTRA-HIGH DUAL-OUTPUT HOLSTER WEAPONLIGHT

OUTPUT (LUMENS)	RUNTIME (HOURS)	CANDELA	WEIGHT	LENGTH	BEZEL DIAMETER	BATTERIES
1,000 / 300	1.25 / 2.5	11,300	4.8 oz (136 g)	3.7 in (9.4 cm)	1.25 in (3.175 cm)	(2) 123A



## XH50

PART #	DESCRIPTION
XH50G	ULTRA-HIGH + GREEN LASER HOLSTER WEAPONLIGHT
XH50R	ULTRA-HIGH + RED LASER HOLSTER WEAPONLIGHT

PART #	OUTPUT (LUMENS)	RUNTIME (HOURS)	CANDELA	WEIGHT	LENGTH	BATTERIES
XH50G	850 / <5 mW (515 nm)	1.25 / 24 (laser)	4,400	4.8 oz (136 g)	3.7 in (9.4 cm)	(2) 123A
XH50R	1,000 / <5 mW (635 nm)	1.25 / 24 (laser)	4,400	4.8 oz (136 g)	3.7 in (9.4 cm)	(2) 123A



## X400UH

PART #	DESCRIPTION
X400UH-A-GN	ULTRA-HIGH-OUTPUT HANDGUN HOLSTER LIGHT + GREEN LASER
X400UH-A-RD	ULTRA-HIGH-OUTPUT HANDGUN HOLSTER LIGHT + RED LASER

PART #	OUTPUT (LUMENS)	RUNTIME (HOURS)	CANDELA	WEIGHT	LENGTH	BATTERIES
X400UH-A-GN	1,000 / <5 mW (515 nm)	1.25 / 24 (laser)	11,300	4.9 oz (139 g)	3.75 in (9.5 cm)	(2) 123A
X400UH-A-RD	1,000 / <5 mW (635 nm)	1.25 / 24 (laser)	11,300	4.9 oz (139 g)	3.75 in (9.5 cm)	(2) 123A



## X400VH

PART #	DESCRIPTION
X400VH-B-IRC	INFRARED/WHITE HANDGUN HOLSTER LIGHT + INFRARED LASER

OUTPUT (LUMENS)	RUNTIME (HOURS)	CANDELA	WEIGHT	LENGTH	BATTERIES
350 / 120 mW / <0.7 mW (850 nm)	2.5 / 16.75 / 20	12,750	4.9 oz (139 g)	4.0 in (10.1 cm)	(2) 123A







## XVL2

PART #	DESCRIPTION
XVL2	PISTOL & CARBINE LIGHT / LASER MODULE SYSTEM - CLASS IIIb NSN 6230-01-674-5624
XVL2-TN	PISTOL & CARBINE LIGHT / LASER MODULE SYSTEM - CLASS IIIb
XVL2-IRC	PISTOL & CARBINE LIGHT / LASER MODULE SYSTEM - CLASS IIIa
XVL2-TN-IRC	PISTOL & CARBINE LIGHT / LASER MODULE SYSTEM - CLASS IIIa
Z88	PARTS KIT FOR XVL2 / XVL2-IRC
Z88-TN	PARTS KIT FOR XVL2 / XVL2-IRC



PART #	OUTPUT	RUNTIME (HOURS)	CANDELA	WEIGHT	LENGTH	BATTERIES
XVL2	WH: 400 lumens IR: 300 mW GN Laser: <5 mW (520 nm) / <47 mW (+/- 10%) IR Laser: <0.7 mW (850 nm) / <3 mW (+/- 10%)	WH: 1.5 IR: 2.75	820	3.3 oz (95 g)	4.5 in (11.43 cm)	(1) I23A
XVL2-IRC	WH: 400 lumens IR: 300 mW GN Laser: <5 mW (520 nm) IR Laser: <0.7 mW (850 nm)	WH: 1.5 IR: 2.75	820	3.3 oz (95 g)	4.5 in (11.43 cm)	(1) I23A
XVL2-TN-IRC	WH: 400 lumens IR: 300 mW GN Laser: <5 mW (520 nm) IR Laser: <0.7 mW (850 nm)	WH: 1.5 IR: 2.75	820	3.3 oz (95 g)	4.5 in (11.43 cm)	(1) I23A

### CO-ALIGNED IR & GREEN LASERS

GN Laser: <5 mW (+/- 10%) IR: <0.7 mW (+/- 10%)

### IR & WHITE ILLUMINATOR

Virtually indestructible white-light and infrared LEDs regulated to maximize output and runtime

### MAXVISION BEAM®

The ideal beam pattern for close-quarter use, providing a smooth and seamless wall of light with no hot spots







## XVL2 REMOTE SWITCH PISTOL

PART #	DESCRIPTION
RSP-01	GLOCK FULL SIZE AND COMPACT GEN3/GEN4/GEN5 FRAMES
RSP-02	HECKLER & KOCH P30 & VP9 SERIES PISTOL FRAMES
RSP-03	SIG SAUER FULL SIZE/COMPACT P320, M17, M18, X-CARRY, X5 FULL-SIZE, X-VTAC AND P226R
RSP-04	SIG SAUER X-CARRY, X5 FULL-SIZE, X-VTAC AND P226R



## XVL2 REMOTE SWITCH RIFLE

PART #	DESCRIPTION
RSR-07	7" SWITCH WITH MOMENTARY ON PRESSURE PAD
RSR-SR07	7" SWITCH WITH MOMENTARY/CONSTANT ON PRESSURE PAD



RSR-07



RSR-SR07







## M340C PRO

PART #	DESCRIPTION
M340C-BK-PRO	COMPACT LED WEAPONLIGHT
M340C-TN-PRO	COMPACT LED WEAPONLIGHT

OUTPUT (LUMENS)	RUNTIME (HOURS)	CANDELA	WEIGHT	LENGTH	BEZEL DIAMETER	BATTERIES
500	1	7,600	3.65 oz (103.5 g)	4.1 in (10.4 cm)	1.125 in (2.9 cm)	(1) 123A



## M640U PRO

PART #	DESCRIPTION
M640U-BK-PRO	ULTRA-HIGH-OUTPUT LED WEAPONLIGHT
M640U-TN-PRO	ULTRA-HIGH-OUTPUT LED WEAPONLIGHT

OUTPUT (LUMENS)	RUNTIME (HOURS)	CANDELA	WEIGHT	LENGTH	BEZEL DIAMETER	BATTERIES
1,000	1.25	11,300	4.35 oz (123.3 g)	5.5 in (13.9 cm)	1.125 in (2.9 cm)	(2) 123A



## M640DF PRO

PART #	DESCRIPTION
M640DF-BK-PRO	DUAL FUEL LED WEAPONLIGHT
M640DF-TN-PRO	DUAL FUEL LED WEAPONLIGHT

BATTERIES	OUTPUT (LUMENS)	RUNTIME (HOURS)	CANDELA	WEIGHT	LENGTH	BEZEL DIAMETER
(1) 18650	1,500	1.5	16,000	5.5 oz (156 g)	5.56 in (14.1 cm)	1.125 in (2.9 cm)
(2) 123A	1,200	1.25	12,800			



## M340V PRO

PART #	DESCRIPTION
M340V-BK-PRO	COMPACT INFRARED / WHITE LED WEAPONLIGHT
M340V-TN-PRO	COMPACT INFRARED / WHITE LED WEAPONLIGHT

OUTPUT (LUMENS)	RUNTIME (HOURS)	CANDELA	WEIGHT	LENGTH	BEZEL DIAMETER	BATTERIES
250 / 100 mW	1.5 / 6	9,300	3.4 oz (96.4 g)	4.1 in (10.4 cm)	1.06 in (2.7 cm)	(1) 123A



## M640V PRO

PART #	DESCRIPTION
M640V-BK-PRO	INFRARED / WHITE LED SCOUT LIGHT
M640V-TN-PRO	INFRARED / WHITE LED SCOUT LIGHT

OUTPUT (LUMENS)	RUNTIME (HOURS)	CANDELA	WEIGHT	LENGTH	BEZEL DIAMETER	BATTERIES
350 / 120 mW	2.5 / 16.75	12,750	4.15 oz (117.7 g)	5.5 in (13.9 cm)	1.06 in (2.7 cm)	(2) 123A







## M952V

PART #	DESCRIPTION
M952V-BK	INFRARED / WHITE LED WEAPONLIGHT (M-AD-SF, DSD7) NSN 6240-01-585-1086
M952V-TN	INFRARED / WHITE LED WEAPONLIGHT (M-AD-SF, DSD7) NSN 6230-01-589-4822

OUTPUT (LUMENS)	RUNTIME (HOURS)	CANDELA	WEIGHT	LENGTH	BEZEL DIAMETER	BATTERIES
350 / 120 mW	2.5 / 16.75	12,750	7.4 oz (209 g)	6.2 in (15.75 cm)	1.06 in (2.7 cm)	(2) I23A



## M6001B

PART #	DESCRIPTION
M6001B-Z68-BK	AUTO-ADJUSTING VARIABLE-OUTPUT LED SCOUT LIGHT



OUTPUT (LUMENS)	RUNTIME (HOURS)	CANDELA	WEIGHT	LENGTH	BEZEL DIAMETER	BATTERIES
600	1.5	14,750	6.2 oz (176 g)	5.8 in (14.7 cm)	1.37 in (3.48 cm)	(2) I23A



### INTELLIBEAM® SENSOR

M6001B sensor is located inside the reflector for maximum accuracy, compactness and damage protection



### INTELLIBEAM® TECHNOLOGY

Auto-adjusting technology reads the environment and instantly optimizes white light output



## M300C

PART #	DESCRIPTION
M300C-Z68-BK	COMPACT LED WEAPONLIGHT
M300C-Z68-TN	COMPACT LED WEAPONLIGHT

OUTPUT (LUMENS)	RUNTIME (HOURS)	CANDELA	WEIGHT	LENGTH	BEZEL DIAMETER	BATTERIES
500	1	7,600	4.1 oz. (116 g)	4.1 in (10.4 cm)	1.125 in (2.9 cm)	(1) 123A



## M600U

PART #	DESCRIPTION
M600U-Z68-BK	ULTRA-HIGH-OUTPUT LED WEAPONLIGHT
M600U-Z68-TN	ULTRA-HIGH-OUTPUT LED WEAPONLIGHT

OUTPUT (LUMENS)	RUNTIME (HOURS)	CANDELA	WEIGHT	LENGTH	BEZEL DIAMETER	BATTERIES
1,000	1.25	11,300	4.8 oz. (136 g)	5.5 in (13.9 cm)	1.125 in (2.9 cm)	(2) 123A



## M600DF

PART #	DESCRIPTION
M600DF-BK	DUAL FUEL LED WEAPONLIGHT
M600DF-TN	DUAL FUEL LED WEAPONLIGHT

BATTERIES	OUTPUT (LUMENS)	RUNTIME (HOURS)	CANDELA	WEIGHT	LENGTH	BEZEL DIAMETER
(1) 18650	1,500	1.5	16,000	5.15 oz (146 g)	5.56 in (14.1 cm)	1.125 in (2.9 cm)
(2) 123A	1,200	1.25	12,800			



## M300V

PART #	DESCRIPTION
M300V-B-Z68-BK	COMPACT INFRARED / WHITE LED WEAPONLIGHT NSN 6230-D1-657-1683
M300V-B-Z68-TN	COMPACT INFRARED / WHITE LED WEAPONLIGHT

OUTPUT (LUMENS)	RUNTIME (HOURS)	CANDELA	WEIGHT	LENGTH	BEZEL DIAMETER	BATTERIES
250 / 100 mW	1.5 / 6	9,300	4 oz (113.3 g)	4.1 in (10.4 cm)	1.06 in (2.7 cm)	(1) 123A



## M600V

PART #	DESCRIPTION
M600V-B-Z68-BK	INFRARED / WHITE LED SCOUT LIGHT NSN 5855-D1-660-5088
M600V-B-Z68-TN	INFRARED / WHITE LED SCOUT LIGHT

OUTPUT (LUMENS)	RUNTIME (HOURS)	CANDELA	WEIGHT	LENGTH	BEZEL DIAMETER	BATTERIES
350 / 120 mW	2.5 / 16.75	12,750	4.8 oz. (136 g)	5.5 in (13.9 cm)	1.06 in (2.7 cm)	(2) 123A







SUREFIRE

SUR

123A

PROTECTION



### KE1H

PART #	DESCRIPTION
KE1H-BK	M300C/M340C-PRO SERIES SCOUTLIGHT BEZEL
KE1H-TN	M300C/M340C-PRO SERIES SCOUTLIGHT BEZEL



### KE2

PART #	DESCRIPTION
KE2-B-BK	M600U/M640U-PRO SERIES SCOUTLIGHT BEZEL
KE2-B-TN	M600U/M640U-PRO SERIES SCOUTLIGHT BEZEL



### KM1

PART #	DESCRIPTION
KM1-E-BK	M300V/M340V-PRO SERIES SCOUTLIGHT BEZEL NSN 6230-01-682-3188
KM1-E-TN	M300V/M340V-PRO SERIES SCOUTLIGHT BEZEL



### KM2

PART #	DESCRIPTION
KM2-C-BK	M600V/M640V-PRO SERIES SCOUTLIGHT BEZEL
KM2-C-TN	M600V/M640V-PRO SERIES SCOUTLIGHT BEZEL



### KM5

PART #	DESCRIPTION
KM5-A-BK	XVL2 BEZEL
KM5-A-TN	XVL2 BEZEL



#### MAXVISION BEAM®

MaxVision Beam® technology shapes the illumination beam to provide the optimum mix of projected and wide angle illumination for target acquisition and situational awareness

WHITE LED

INFRARED LED



### LM1

PART #	DESCRIPTION
LM1-B-BK	3V SHOTGUN/SMG FORENSIS BEZEL



### LM2

PART #	DESCRIPTION
LM2-B-BK	6V SHOTGUN/SMG FORENSIS BEZEL



### MN03

PART #	DESCRIPTION
MN03	LAMP ASSEMBLY, 6V, 60 LUMENS, FOR E2/E2E EXECUTIVE SERIES



### P60

PART #	DESCRIPTION
P60	REFLECTOR/LAMP ASSEMBLY, 6V, 65 LUMENS, FOR 6C/6P/6R/6Z/6Z/D2/6Z/6Z/6Z/M2/7Z HANDHELD LIGHTS NSN 6240-01-513-6526





## M75

PART #	DESCRIPTION
M75	SCOUT LIGHT THUMBSCREW MOUNT
M75-TN	SCOUT LIGHT THUMBSCREW MOUNT



## M-AD-SF

PART #	DESCRIPTION
M-AD-SF	AMERICAN DEFENSE MANUFACTURING, QD LEVER SCOUT LIGHT MOUNT
M-AD-SF-TN	AMERICAN DEFENSE MANUFACTURING, QD LEVER SCOUT LIGHT MOUNT



## MH30

PART #	DESCRIPTION
MH30	M300 SERIES SCOUT LIGHT BODY
MH30-TN	M300 SERIES SCOUT LIGHT BODY



## MH60

PART #	DESCRIPTION
MH60	D84871853682 M600 SERIES SCOUT LIGHT BODY
MH60-TN	D84871327787 M600 SERIES SCOUT LIGHT BODY



## RM45

PART #	DESCRIPTION
RM45	45 DEGREE OFF-SET SCOUT LIGHT MOUNT NSN 5340-01-659-4715
RM45-TN	45 DEGREE OFF-SET SCOUT LIGHT MOUNT



## DS00

PART #	DESCRIPTION
DS00	SCOUT LIGHT SWITCH NSN 5930-01-664-4488
DS00-TN	SCOUT LIGHT SWITCH



## DS07

PART #	DESCRIPTION
DS07	SCOUT LIGHT WATERPROOF SWITCH
DS07-TN	SCOUT LIGHT WATERPROOF SWITCH



## DS-SR07

PART #	DESCRIPTION
DS-SR07	SCOUT LIGHT WATERPROOF SWITCH
DS-SR07-TN	SCOUT LIGHT WATERPROOF SWITCH



## DS-SR07-D-IT

PART #	DESCRIPTION
DS-SR07-D-IT	DUAL REMOTE SWITCH FOR SCOUT LIGHT + LASER DEVICE
DS-SR07-D-IT-TN	DUAL REMOTE SWITCH FOR SCOUT LIGHT + LASER DEVICE



## SR07

PART #	DESCRIPTION
SR07	D84871851237 RAIL GRABBER TAPE SWITCH, MOMENTARY/CONSTANT-ON NSN 5930-01-600-4327





## SR07-D-IT

PART #	DESCRIPTION
SR07-D-IT	REMOTE DUAL SWITCH FOR WEAPONLIGHT + LASER DEVICE NSN 5930-DI-623-5207
SR09-D-IT	REMOTE DUAL SWITCH FOR WEAPONLIGHT + LASER DEVICE NSN 5930-DI-581-6956



## ST07

PART #	DESCRIPTION
ST07	REMOTE TAPE SWITCH FOR WEAPONLIGHT NSN 5930-DI-531-2192



## UE07

PART #	DESCRIPTION
UE07	SCOUT LIGHT REMOTE SWITCH NSN 6150-DI-594-3669
UE07-TN	SCOUT LIGHT REMOTE SWITCH



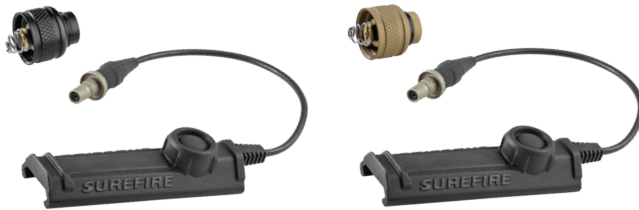
## UE

PART #	DESCRIPTION
UE-BK	Z68 CLICK STYLE TAILCAP REPLACEMENT (DOES NOT INCLUDE SWITCH)
UE-TN	Z68 CLICK STYLE TAILCAP REPLACEMENT (DOES NOT INCLUDE SWITCH)



## UE-SR07

PART #	DESCRIPTION
UE-SR07-BK	SCOUT LIGHT REMOTE SWITCH
UE-SR07-TN	SCOUT LIGHT REMOTE SWITCH



## XM07

PART #	DESCRIPTION
XM07	MILLENNIUM WEAPONLIGHT REMOTE DUAL SWITCH TAILCAP ASSEMBLY NSN 5340-DI-528-3149



## XT00

PART #	DESCRIPTION
XT00	X-SERIES WEAPONLIGHTS TAILCAP SWITCH ASSEMBLY WITH DISABLE



## XT07

PART #	DESCRIPTION
XT07	X-SERIES WEAPONLIGHTS TAILCAP SWITCH ASSEMBLY WITH DISABLE NSN 5930-DI-601-4631



## Z61

PART #	DESCRIPTION
Z61	REAR CAP ASSY FOR E1/E2 FLASHLIGHTS



## Z68

PART #	DESCRIPTION
Z68	CLICK STYLE TAILCAP NSN 5930-DI-605-9781
Z68-TN	CLICK STYLE TAILCAP







## SHOTGUN FORENDS

PART #	DESCRIPTION
618LMG-B	ULTRA-HIGH-OUTPUT FOREND WEAPONLIGHT FOR REMINGTON 870
DSF-500/590	ULTRA-HIGH TWO-OUTPUT-MODE LED WEAPONLIGHT FOR MOSSBERG 590/500
DSF-870	ULTRA-HIGH TWO-OUTPUT-MODE LED WEAPONLIGHT FOR REMINGTON 870

618LMG-B



DSF-870  
DSF-500/590

PART #	OUTPUT (LUMENS)	RUNTIME (HOURS)	CANDELA	WEIGHT	LENGTH	BATTERIES
618LMG-B	1,000	1.25	10,600	17.2 oz (487 g)	10.3 in (26 cm)	(2) 123A
DSF SERIES	600 / 200	1.5 / 3	13,000	18.2 oz (516 g)	9.2 in (23.4 cm)	(2) 123A





## SUBMACHINE GUN FORENDS

PART #	DESCRIPTION
328LMF-B	COMPACT LED WEAPONLIGHT FOR HK MP5, HK53 & HK94
628LMF-B	HIGH-OUTPUT LED WEAPONLIGHT FOR HK MP5, HK53 & HK94

PART #	OUTPUT (LUMENS)	RUNTIME (HOURS)	CANDELA	WEIGHT	LENGTH	BATTERIES
328LMF-B	500	1	7,600	9.6 oz (272.2 g)	8.14 in (20.6 cm)	(1) 123A
628LMF-B	1,000	1.25	10,600	17.6 oz (499 g)	9.48 in (24 cm)	(2) 123A

328LMF-B



628LMF-B







## HELLFIGHTER®

PART #	DESCRIPTION
HF4A	HID SEARCHLIGHT/WEAPONLIGHT, HIGH/LOW/STROBE MODES, INCLUDES INFRARED FILTER/COVER ASSEMBLY NSN 5855-01-589-D121
HF4A KIT01	KIT INCLUDES HF4A, HFM-09, UH-D1E, UH-D5DB, BCS-2MIL-TN, HFM-10, GRIP SWITCH TOOLS, CLEANING KIT, OPERATOR'S MANUAL, GTA, PADDED STORAGE CASE
HF4A KIT02	KIT INCLUDES HF4A, M99C, UH-D1E, UH-D5DB, BCS-2MIL-TN, HFM-10, GRIP SWITCH TOOLS, CLEANING KIT, OPERATOR'S MANUAL, GTA, PADDED STORAGE CASE NSN 6230-01-614-1752

OUTPUT (LUMENS)	RUNTIME (HOURS)	CANDELA	WEIGHT	LENGTH	BEZEL DIAMETER	BATTERIES
3,000 / 1,000	12 VDC Vehicle System: continuous BA-5590 Military Battery: (1) 90 minutes; (2 Parallel) 3+ hours Integral Rechargeable Battery: 30 minutes	590,000	6.5 lbs (2.95 kg)	11 in (27.9 cm)	4.1 in (10.4 cm)	Integral rechargeable battery 8 DC power







## HELLFIGHTER® ACCESSORIES

PART #	DESCRIPTION
BA-R-01	BATTERY ASSEMBLY, RECHARGEABLE, LITHIUM ION, FOR HF4 SERIES HELLFIGHTER
BCH-1MIL-BK	BATTERY CARRIER, HF1/HF4 SERIES HELLFIGHTER, HOLDS (1) BA 5590 BATTERY NSN 1350-01-531-7033
BCS-2MIL-M	BATTERY CARRIER, PADDED NYLON (HF1/HF4) HOLDS (2) BA 5590 BATTERIES
BCS-2MIL-TN	BATTERY CARRIER, PADDED NYLON (HF1/HF4) HOLDS (2) BA 5590 BATTERIES NSN 1350-01-577-0626
FM78	FILTER ASSEMBLY, AMBER, FOR HF1 SERIES HELLFIGHTER
FM79	FILTER/COVER ASSEMBLY, INFRARED FILTER, FOR HF4 SERIES HELLFIGHTER NSN 5855-01-614-3369
HFM-09	MOUNT ASSEMBLY, FITS MK93 WEAPON MOUNT (HF1/HF4)
HFM-10	RAIL MOUNT ADAPTER, T-SLOT MOUNT TO FIT ONTO MIL-STD-1913 RAIL (HF1/HF4) NSN 6135-01-601-4635
LA-HID-01	LAMP ASSEMBLY, HID, FOR HF4 SERIES HELLFIGHTER
M100	HF1/HF4 SERIES UNIVERSAL PLATE MOUNT/ADAPTER FOR M96 MOUNT NSN 2840-01-577-0798
M87A	HF1/HF4 SERIES MOUNT ASSEMBLY, FOR M2HB WITHOUT SHIELD NSN 6230-01-549-4053
M88A	HF1/HF4 SERIES MOUNT ASSEMBLY, FOR M2HB WITH SHIELD
M89A	MOUNT ASSEMBLY, MINIGUN, HELLFIGHTER
M89B	MOUNT ASSEMBLY, MACHINED, MINIGUN, HELLFIGHTER
M96	HF1/HF4 SERIES MOUNT ASSEMBLY, FOR AAVP7A1 NSN 6230-01-577-1437
M99A	MOUNT, T RAIL, HELLFIGHTER, SHORT NSN 6230-01-577-1443
M99B	MOUNT, T-RAIL, HELLFIGHTER, MOUNT, T-RAIL, HELLFIGHTER, EXTENDED NSN 6230-01-577-1448
SW-M2HB-03	GRIP SWITCH ASSEMBLY, FOR HF4 SERIES HELLFIGHTER
UH-0100	SWITCH CABLE ADAPTER, FOR USE WITH TWO BA 5590 BATTERIES
UH-010E	CIGARETTE LIGHTER ADAPTER 24V TO 12V STEP DOWN CONVERTER NSN 5930-01-601-4634
UH-01E	SWITCH CABLE ASSEMBLY, FOR HF4 SERIES HELLFIGHTER NSN 5930-01-601-4634
UH-05	SWITCH CABLE, FOR HF1 AND HF4 SERIES HELLFIGHTER
UH-050A	SWITCH CABLE ADAPTER W/ CIGARETTE LIGHTER PLUG, 7" LONG, FOR HF1/HF4 NSN 1005-01-601-4633
UH-050B	24V DC TO 12V DC NATO SLAVE CABLE ADAPTER/CONVERTER NSN 5935-01-601-4632
Z79	PROTECTIVE WINDOW, ANTI-REFLECTIVE COATING, FOR HF4 SERIES HELLFIGHTER
Z80	HARDWARE KIT, FOR HF4 SERIES HELLFIGHTER
Z81	REPLACEMENT LATCH PIN, FOR HF4 SERIES HELLFIGHTER
Z82	O-RING, FITS BETWEEN LAMP/REFLECTOR HOUSING & BATTERY CUP ON HF4
Z83	REPLACEMENT GASKET FITS BETWEEN BATTERY CAP & BATTERY HOUSING - HF4



# HANDHELD LIGHTS





# INNOVATION IS OUR STANDARD

SureFire created the first tactical flashlight in 1986, so we know a thing or two about them. We offer a handheld flashlight for every task – no matter how big or small. SureFire flashlights provide you maximum output with minimal size, and the best quality in the business. From our durable keychain lights to our portable lighthouse, the UDR Dominator, we use only the finest LED emitters, sophisticated electronics, and robust bodies. The result is a legacy of unmatched quality, brilliant performance, and rugged durability not available from any other brand.

## DID YOU KNOW?

- + We build the highest quality flashlights money can buy. Our handheld lights use the same premium LEDs, sophisticated digital regulation electronics, and precision optics as our world-class WeaponLights. They deliver maximum output, ideal runtimes, and beam patterns optimized for your specific needs.
- + SureFire invented the tactical tail cap, and our click-type tail caps provide you with switching that is the best in the business. We equip many SureFire flashlight models with a version of these reliable, ergonomic, and intuitive switches. You can also select models that incorporate gas pedal-style rotating tail caps for constant-on activation, or variable output head switches. Whatever you prefer, there's a SureFire handheld for you.
- + SureFire's rugged and robust illumination tools provide durability to last a lifetime. Machined from aerospace-grade aluminum or crafted from non-conductive, corrosion-proof, high-strength polymer, our bodies are built to take a beating. They also feature knurling, sculpting, and molding for a secure grip in the most stressful conditions.
- + We protect SureFire flashlights so they can protect you when you need them most. Our aluminum models are Mil-Spec Type III hard-anodized for added durability and corrosion resistance, and every SureFire flashlight body is O-ring and gasket sealed to keep out the elements. Inside, the electronics are protected by a conformal coating for added protection against moisture.
- + SureFire's proprietary Total Internal Reflection lens models deliver the best combination of distance light and flood light so you see precisely what you need to see. These precision optics deliver maximum lumen efficiency, projecting most of the light forward to a degree not possible with similar-sized reflectors. TIR illuminates the main subject of interest at longer distances with a surrounding cone containing the remainder of the emitted light.
- + SureFire's patented MaxVision Beam® models give you the best-quality light for close- to medium-range applications. They provide a broad, perfectly smooth, seamless wall of light that's tailored to the human eye response for the entire field of view, ideal to help ensure maximum situational awareness.
- + SureFire Parabolic Reflector models offer plenty of throw and spill light to help you see better in low-light conditions. The reflectors deliver a crisp beam with no imperfections, so you can clearly illuminate the main subject of interest and still have ample surround light to maintain situational awareness.
- + SureFire handheld flashlights can be purchased in a variety of battery options, including Dual Fuel, 123A lithium (disposable) battery-powered, AAA Nickel Metal Hydride-powered (NiMH), and conveniently rechargeable lithium polymer battery-powered.
- + Every SureFire handheld light is backed by our No-Hassle Guarantee.





## STILETTO®

PART #	DESCRIPTION
PLR-A	MULTI-OUTPUT RECHARGEABLE POCKET LED POLYMER FLASHLIGHT



- 1 PRIMARY SWITCH**  
Press for easy, instant access to three distinct and useful output levels
- 2 TACTICAL SWITCH**  
Press for momentary high output. Press 3 times rapidly and hold the button down for strobe
- 3 RECHARGEABLE**  
MICRO-USB adapter (charging cable included) for easy recharging from a variety of power sources
- 4 PROGRAMMING**  
Configure your Stiletto's activation and tactical switches to meet your individual requirements
- 5 POLYMER BODY**  
Sleek, slim, and strong, the Stiletto fits unobtrusively in practically any pocket
- 6 POCKET CLIP**  
A robust steel pocket clip secures the Stiletto in a pocket or on a hat brim

OUTPUT (LUMENS)	RUNTIME (HOURS)	CANDELA	WEIGHT	LENGTH	BEZEL DIAMETER	BATTERIES
5 / 250 / 650	30 / 2 / 1.75	1,530	2.8 oz (79 g)	4.45 in (11.3 cm)	0.8 in (2.03 cm)	Lithium Polymer

## STILETTO® PRO

PART #	DESCRIPTION
PLR-B	MULTI-OUTPUT RECHARGEABLE POCKET LED FLASHLIGHT



OUTPUT (LUMENS)	RUNTIME (HOURS)	CANDELA	WEIGHT	LENGTH	BEZEL DIAMETER	BATTERIES
25 / 300 / 1,000	23.5 / 1.5 / 1	5,100	4.0 oz (113 g)	4.5 in (11.4 cm)	0.87 in (2.2 cm)	Lithium Polymer



ALL ALUMINUM CONSTRUCTION

**REVERSIBLE POCKET CLIP**  
The Stiletto Pro features a reversible pocket clip to allow bezel up or bezel down configuration.





## E1B BACKUP®

PART #	DESCRIPTION
E1B-MV	COMPACT DUAL-OUTPUT POCKET LED FLASHLIGHT NSN 6230-01-682-7257



OUTPUT (LUMENS)	RUNTIME (HOURS)	CANDELA	WEIGHT	LENGTH	BEZEL DIAMETER	BATTERIES
5 / 400	50 / 1.25	1,865	2.95 oz (83.6 g)	3.9 in (9.9 cm)	1.13 in (2.8 cm)	(1) 123A

## TACTICIAN®

PART #	DESCRIPTION
E2T-MV	DUAL-OUTPUT POCKET LED FLASHLIGHT



OUTPUT (LUMENS)	RUNTIME (HOURS)	CANDELA	WEIGHT	LENGTH	BEZEL DIAMETER	BATTERIES
5 / 800	1.5 / 94	3,200	3.5 oz (99 g)	5.0 in (12.7 cm)	1.0 in (2.54 cm)	(2) 123A

## EDCL1-T

PART #	DESCRIPTION
EDCL1-T	DUAL-OUTPUT EVERYDAY CARRY POCKET LED FLASHLIGHT



OUTPUT (LUMENS)	RUNTIME (HOURS)	CANDELA	WEIGHT	LENGTH	BEZEL DIAMETER	BATTERIES
5 / 500	1 / 45	7,600	3.3 oz (95 g)	4.5 in (11.43 cm)	1.125 in (2.85 cm)	(1) 123A

## EDCL2-T

PART #	DESCRIPTION
EDCL2-T	DUAL-OUTPUT EVERYDAY CARRY POCKET LED FLASHLIGHT



OUTPUT (LUMENS)	RUNTIME (HOURS)	CANDELA	WEIGHT	LENGTH	BEZEL DIAMETER	BATTERIES
5 / 1,200	1 / 60	11,300	4.1 oz (118 g)	5.84 in (14.8 cm)	1.125 in (2.85 cm)	(2) 123A

## E2D DEFENDER®

PART #	DESCRIPTION
E2DLU-A	DUAL-OUTPUT POCKET LED FLASHLIGHT NSN 6230-01-632-3134



OUTPUT (LUMENS)	RUNTIME (HOURS)	CANDELA	WEIGHT	LENGTH	BEZEL DIAMETER	BATTERIES
5 / 1,000	2.75 / 63	10,600	4.2 oz (119 g)	5.6 in (14.2 cm)	1.125 in (2.85 cm)	(2) 123A



### STRIKE BEZEL

Crenellated Strike Bezel® provides self-defense capability



### TIR LENS

The Defender's Total Internal Reflector lens produces a beam that is concentrated at the center for long-distance reach and also delivers sufficient surround light for peripheral vision





## TITAN® PLUS

PART #	DESCRIPTION
TITAN-B	ULTRA-COMPACT TRIPLE-OUTPUT LED FLASHLIGHT

### DURABLE CONSTRUCTION

The extremely rugged Titan Plus is the only SureFire flashlight to be constructed of durable nickel-plated brass

OUTPUT (LUMENS)	RUNTIME (HOURS)	CANDELA	WEIGHT	LENGTH	BEZEL DIAMETER	BATTERIES
15 / 75 / 300	7 / 2 / 1	1,100	2.0 oz (58 g)	3.375 in (8.6 cm)	0.58 in (1.47 cm)	(1) AAA NiMH

### MULTIPLE SETTING

Twist the bezel for 15 lumens of output for reading and other tasks; twist it again within 1 second for the medium output, or twist one more time for the high output



### VERSATILITY

The Titan Plus comes equipped with both pocket clip and key chain ring

## SIDEKICK®

PART #	DESCRIPTION
SIDEKICK-A	ULTRA-COMPACT TRIPLE-OUTPUT LED RECHARGEABLE FLASHLIGHT



OUTPUT (LUMENS)	RUNTIME (HOURS)	CANDELA	WEIGHT	LENGTH	BEZEL	BATTERIES
300 / 60 / 5	1.25 / 4 / 45	1,100	1.2 oz (34 g)	2.5 in (6.35 cm)	0.58 in (1.47 cm)	Lithium Polymer Rechargeable

## SIDEKICK® ACCESSORIES

PART #	DESCRIPTION
Z87	BELT CLIP FOR SIDEKICK, STAINLESS STEEL
V94	HEADBAND, ELASTIC & ADJUSTABLE FOR SIDEKICK SERIES LIGHTS
LIGHTKEEPER-A	LANYARD WITH AUTOMATIC RETURN, BULLDOG CLIP WITH 24" CORD



Z87  
POCKET CLIP



V94  
HEADLAMP STRAP



LIGHTKEEPER-A™  
RETRACTABLE CORD





## GUARDIAN®

PART #	DESCRIPTION
DBR	RECHARGEABLE ULTRA-HIGH DUAL-BEAM LED FLASHLIGHT

## V95 HOLSTER

PART #	DESCRIPTION
V95	NYLON BELT HOLSTER FOR DBR GUARDIAN



### REF MVB 2 BEAM PATTERNS

The 19 mm Parabolic Reflector delivers long-range vision while the 12 mm MaxVision Beam® provides a wide, seamless beam for excellent close-range illumination

### INTELLIBEAM®

Auto-adjusting technology instantly optimizes output to the environment

LENS	OUTPUT (LUMENS)	RUNTIME (HOURS)	CANDELA	WEIGHT	LENGTH	BEZEL	BATTERIES
19mm	800 / 250 / 15	2.75 / 4.25 / 60	12,900	4.7 oz (133 g)	4.35 in (11.0 cm)	1.15 in 0.9 in	Lithium Polymer Rechargeable
12mm	1,000 / 300 / 15	2.5 / 4.25 / 62					



V95  
GUARDIAN HOLSTER







## G2X TACTICAL / LE / PRO

PART #	DESCRIPTION
G2X-C-BK	SINGLE-OUTPUT LED POLYMER FLASHLIGHT - HIGH OUTPUT ONLY
G2X-D-BK	DUAL-OUTPUT LED POLYMER FLASHLIGHT - LOW/HIGH OUTPUT NSN 6230-DI-617-9616
G2X-D-FG	DUAL-OUTPUT LED POLYMER FLASHLIGHT - LOW/HIGH OUTPUT
G2X-D-TN	DUAL-OUTPUT LED POLYMER FLASHLIGHT - LOW/HIGH OUTPUT
G2X-D-YL	DUAL-OUTPUT LED POLYMER FLASHLIGHT - LOW/HIGH OUTPUT
G2XLE-BK	DUAL-OUTPUT LED POLYMER FLASHLIGHT - HIGH/LOW OUTPUT

OUTPUT (LUMENS)	RUNTIME (HOURS)	CANDELA	WEIGHT	LENGTH	BEZEL DIAMETER	BATTERIES
15 / 600	1.5 / 52	8,700	4.4 oz (125 g)	5.2 in (13.2 cm)	1.25 in (3.2 cm)	(2) I23A



G2X-C-BK / G2X-D-BK / G2XLE-BK



G2X-D-FG



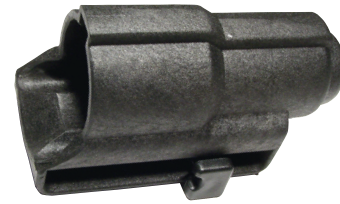
G2X-D-TN



G2X-D-YL

## FLASHLIGHT HOLSTER

PART #	DESCRIPTION
V70	SPEED HOLSTER, BLACK PLASTIC, FOR 6PX, G2X & PIR NSN 6230-DI-523-6437
V70-TN	SPEED HOLSTER, TAN PLASTIC, FOR 6PX, G2X & PIR NSN 8465-DI-532-4188



## 6PX TACTICAL / 6PX PRO

PART #	DESCRIPTION
6PX-C-BK	SINGLE-OUTPUT LED FLASHLIGHT - HIGH OUTPUT ONLY NSN 6230-DI-623-4223
6PX-D-BK	DUAL-OUTPUT LED FLASHLIGHT - LOW/HIGH OUTPUT



OUTPUT (LUMENS)	RUNTIME (HOURS)	CANDELA	WEIGHT	LENGTH	BEZEL DIAMETER	BATTERIES
15 / 600	1.5 / 52	8,700	5.2 oz (147 g)	5.2 in (13.2 cm)	1.25 in (3.175 cm)	(2) I23A

## G2X MV

PART #	DESCRIPTION
G2X-MV	DUAL-OUTPUT LED POLYMER FLASHLIGHT - LOW/HIGH OUTPUT



OUTPUT (LUMENS)	RUNTIME (HOURS)	CANDELA	WEIGHT	LENGTH	BEZEL DIAMETER	BATTERIES
15 / 800	1.5 / 52	3,307	3.9 oz (110 g)	4.87 in (12.3 cm)	1.1 in (2.8 cm)	(2) I23A

## G2Z MV COMBATLIGHT

PART #	DESCRIPTION
G2Z-MV	SINGLE-OUTPUT MAXVISION BEAM® LED FLASHLIGHT



OUTPUT (LUMENS)	RUNTIME (HOURS)	CANDELA	WEIGHT	LENGTH	BEZEL DIAMETER	BATTERIES
800	1.5	3,307	4.25 oz (120 g)	4.75 in (12 cm)	1.1 in (2.8 cm)	(2) I23A

## G2ZX COMBATLIGHT

PART #	DESCRIPTION
G2ZX-C-BK	SINGLE-OUTPUT LED FLASHLIGHT NSN 6230-DI-532-3740



OUTPUT (LUMENS)	RUNTIME (HOURS)	CANDELA	WEIGHT	LENGTH	BEZEL DIAMETER	BATTERIES
600	1.5	8,700	4.3 oz (121 g)	5.2 in (13.2 cm)	1.25 in (3.175 cm)	(2) I23A







## DOMINATOR®

PART #	DESCRIPTION					
UDR-A-BK	RECHARGEABLE ULTRA-HIGH VARIABLE-OUTPUT LED FLASHLIGHT					
OUTPUT (LUMENS)	RUNTIME (HOURS)	CANDELA	WEIGHT	LENGTH	BEZEL	BATTERIES
2,400 / 14	2.25 / 22.75	200,000	2.4 lb (108 kg)	11.6 in (29.5 cm)	3.0 in (7.7 cm)	(1) Lithium-ion / (12) 123A



**1 REFLECTOR**  
Virtually indestructible regulated LED emitter and large parabolic reflector produce a tight, extended-reach beam for excellent long-range visibility

**2 ACTIVATION**  
Instantly activate to one of nine useful output levels plus tactical strobe and system-disable settings. Its three-button head switching controls momentary-on, constant-on, or MaxBlast

**3 DUAL FUEL**  
Versatility of being powered by its rechargeable lithium-ion battery for regular use or by 12 disposable 123As in the included battery magazine

**4 RECHARGEABLE**  
Convenient recharging via its included wall charger (AC) with international adapters, or car charger (DC). A fuel gauge makes it easy to monitor remaining battery power





## FURY® TACTICAL

PART #	DESCRIPTION
FURY-DFT	DUAL FUEL TACTICAL LED FLASHLIGHT



BATTERIES	OUTPUT (LUMENS)	RUNTIME (HOURS)	CANDELA	WEIGHT	LENGTH	BEZEL DIAMETER
(1) 18650	1,500	1.5	25,200	6.5 oz (184 g)	5.6 in (14.2cm)	1.39 in (3.5cm)
(2) 123A	1,100	1.25	16,700			



RECHARGEABLE SF18650B BATTERY INCLUDED

## FURY® INTELLIBEAM

PART #	DESCRIPTION
FURY-IB-DF	AUTO-ADJUSTING DUAL FUEL LED FLASHLIGHT



BATTERIES	OUTPUT (LUMENS)	RUNTIME (HOURS)	CANDELA	WEIGHT	LENGTH	BEZEL DIAMETER
(1) 18650	1,500	up to 40	25,200	6.5 oz (184 g)	5.6 in (14.2cm)	1.39 in (3.5cm)
(2) 123A	1,100		16,700			



**INTELLIBEAM®**  
Auto-adjusting technology reads the environment and instantly optimizes output, providing the convenience of virtually infinite output settings

All performance claims tested to ANSI/NEMA FL1-2019 Standard.





## AVIATOR®

PART #	DESCRIPTION
AVIATOR-RD	MULTI-SPECTRUM DUAL-OUTPUT LED POCKET FLASHLIGHT NSN 6230-01-531-7033
AVIATOR-YG	MULTI-SPECTRUM DUAL-OUTPUT LED POCKET FLASHLIGHT

LED COLOR	OUTPUT	RUNTIME	CANDELA	WEIGHT	LENGTH	BEZEL DIAMETER	BATTERIES
WHITE (ALL MODELS)	250 / 5	1.5 / 20.5	9,300	3.1 oz (88 g)	4.18 in (10.6 cm)	1.06 in (2.7 cm)	(1) 123A
RED	39 / 1	3 / 57	-	-	-	-	-
YELLOW-GREEN	39 / 3	12 / 58	-	-	-	-	-



**AVIATOR-RD (RED)**  
 + MINIMIZES DEGRADATION OF NIGHT-ADAPTED VISION  
 + IDEAL FOR RED-LIGHT READABLE TOPOGRAPHIC MAPS



**AVIATOR-YG (YELLOW-GREEN)**  
 + HELPS BETTER DEFINE SHAPES/CONTOURS IN THE OUTDOORS  
 + COLOR THAT BLENDS WELL WITH AIRCRAFT COCKPIT LIGHTING

## VI-B VAMPIRE®

PART #	DESCRIPTION
VI-B-BK	MULTI-SPECTRUM DUAL-OUTPUT LED POCKET FLASHLIGHT NSN 6230-01-662-9886



LED	OUTPUT (LUMENS)	RUNTIME (HOURS)	CANDELA	WEIGHT	LENGTH	BEZEL DIAMETER	BATTERIES
WHITE	250 / 5	1.5 / 6	9,300	3.1 oz (88 g)	4.18 in (10.6 cm)	1.06 in (2.7 cm)	(1) 123A
IR	100 / 5 mW	20.5 / 57	-	-	-	-	-

## VI-C VAMPIRE®

PART #	DESCRIPTION
VI-C-BK	MULTI-SPECTRUM SINGLE-OUTPUT LED POCKET FLASHLIGHT



LED	OUTPUT (LUMENS)	RUNTIME (HOURS)	CANDELA	WEIGHT	LENGTH	BEZEL DIAMETER	BATTERIES
RED	0.4	100	-	3.1 oz (88 g)	4.18 in (10.6 cm)	1.06 in (2.7 cm)	(1) 123A
IR	100	8.75	-	-	-	-	-





## FILTERS

PART #	DESCRIPTION
FM70	FILTER ASSEMBLY FOR 1.125" DR 1" BEZELS, RED, BLUE, GREEN LENS INCLUDED
FD4-A	SLIP ON BEAMSHAPER FILTER, 1.125" BEZEL, FITS EXECUTIVE, OUTDOORSMAN SERIES
FD7-A	SLIP ON CLEAR PROTECTIVE COVER ASSY, 1.125" BEZEL, FITS X300U, X400U
F05	SLIP ON RED FILTER ASSY, 1.0" BEZEL NSN 6280-DI-525-3745
F06	SLIP ON BLUE FILTER ASSY, 1.0" BEZEL
F26	RED FILTER, TIPOFF, 1.25" BEZEL
F27	BLUE FILTER, TIPOFF, 1.25" BEZEL



FM70



F05



F06



F26



F27

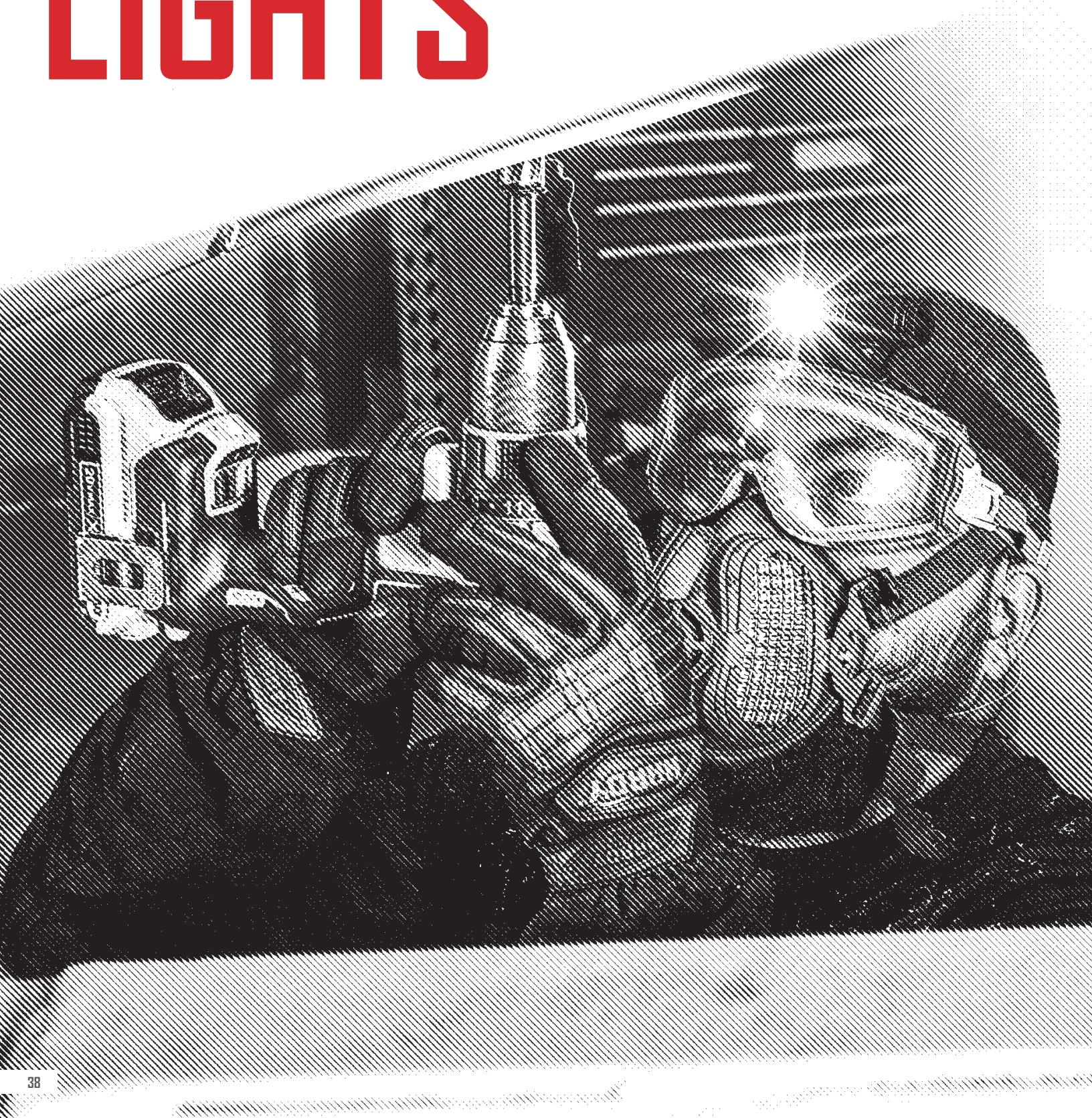
## FLASHLIGHT WAND

PART #	DESCRIPTION
F28	FLASHLIGHT WAND - RED - 6PX/G2X





# HANDS-FREE LIGHTS





# KEEP YOUR OPTIONS OPEN

Sometimes a tough task requires two hands to complete. SureFire headlamps and 2211® WristLights allow you to focus on a given task without having to hold a flashlight in one hand. SureFire Maximus® and Minimus® headlamps provide critical support on the highest mountaintops, in the deepest caves, or even when you're working on a vehicle in your driveway. Developed with input from Law Enforcement professionals, 2211 WristLights are a revolutionary approach to hands-free lighting. SureFire HelmetLights are designed primarily for military use, and they attach to nearly any military helmet.

## DID YOU KNOW?

- + SureFire Maximus and Minimus headlamps (and 2211 WristLights) utilize our patented MaxVision Beam® reflector technology. MaxVision provides a seamless wall of light for the entire field of view. It is ideal for close- to medium-range distances where maximum situational awareness is crucial.
- + Choose the Maximus for up to 1,000 lumens of light and easy adjustment from 1 lumen to max output. Or select the Minimus with 13 output settings, from 5 lumens to 300 lumens. Either way, you'll enjoy the benefit of a beautifully smooth, rounded and optically satisfying beam pattern.
- + The Maximus and Minimus feature rugged bodies that can take whatever punishment you can dish out, matched with easily adjustable headbands that provide optimal long-wearing comfort.
- + SureFire 2211 WristLights are an outside-the-box alternative approach to hands-free lighting. Designed with input from law enforcement for use with a two-handed pistol grip, they also provide excellent emergency/ task lighting that can be carried all day, on the go.
- + Choose among models with user-programmable output sequence switching or one-touch switching that provides max-output first and can be held for lower output settings. You can also select a model that incorporates ambidextrous switching, a wristwatch with quartz movement, and a rotating bezel for enhanced utility.
- + To meet your specific needs, we offer 2211s that provide convenient rechargeability via a supplied Micro-USB cable, or you can select a model that is powered by a single disposable 123A lithium battery if you prefer to hot swap batteries.
- + SureFire's rugged HelmetLights have been the go-to helmet light for military forces around the globe for years. They provide trouble-free illumination for close-quarter tasks, and they fit nearly any helmet, including ACH, LWH, MICH, or PASGT, without permanent modification to the helmet.
- + Powered by a single 123A lithium-ion battery, every SureFire HelmetLight incorporates 5 + 1 Fixed IR IFF light-emitting diodes to produce multiple spectra of light at multiple power levels.
- + Every SureFire hands-free light is backed by our No-Hassle Guarantee.





## MINIMUS<sup>®</sup>

PART #	DESCRIPTION
HS2-MV-A-BK	VARIABLE-OUTPUT LED HEADLAMP

OUTPUT (LUMENS)	RUNTIME (HOURS)	CANDELA	WEIGHT	DIMENSIONS	BATTERIES
5-300	75 / 1.5	1,100	4.0 oz (113 g)	4.46 in x 1.65 in x 1.45 in	(1) 123A



## MAXIMUS

PART #	DESCRIPTION
HS3-A-BK	ULTRA-HIGH VARIABLE-OUTPUT LED HEADLAMP NSN 6230-01-622-0311

OUTPUT (LUMENS)	RUNTIME (HOURS)	CANDELA	WEIGHT	DIMENSIONS	BATTERIES
1-1,000	550 / 1.5	4,100	6.9 oz (195 g)	2.55 in x 4.24 in x 1.5 in	Lithium-ion rechargeable





## 2211SF

PART #	DESCRIPTION
2211-B-BK-SF	VARIABLE-OUTPUT RECHARGEABLE LED WRISTLIGHT WATCH



OUTPUT (LUMENS)	RUNTIME (HOURS)	CANDELA	WEIGHT	LENGTH	BATTERIES
300 / 60 / 15	1 / 4 / 13	1,100	3.75 oz (106 g)	2.36 in x 2.02 in x 1.03 in	(1) 123A

## 2211PLM

PART #	DESCRIPTION
2211-A-BK-PLM	VARIABLE-OUTPUT RECHARGEABLE LED WRISTLIGHT



OUTPUT (LUMENS)	RUNTIME (HOURS)	CANDELA	WEIGHT	LENGTH	BATTERIES
300 / 60 / 15	1 / 4 / 13	1,100	3.5 oz (99 g)	2.23 in x 2.0 in x 1.25 in	Lithium Ion Battery

## 2211X & HEADSTRAP

PART #	DESCRIPTION
2211X-A-BK	VARIABLE-OUTPUT 123A-POWERED LED WRISTLIGHT
2211-HEADSTRAP	ACCESSORY HEADSTRAP FOR 2211 WRISTLIGHT PRODUCTS



OUTPUT (LUMENS)	RUNTIME (HOURS)	CANDELA	WEIGHT	LENGTH	BATTERIES
300 / 60 / 15	1.5 / 7 / 13	1,100	3.5 oz (99 g)	1.3 in x 2.6 in x 1.8 in	(1) 123A



2211X HEADSTRAP

## H1I & ACCESSORIES

PART #	DESCRIPTION
H1I-A-BK	VARIABLE-OUTPUT MULTI-SPECTRUM LED - (WHITE / BLUE) NSN 6220-01-594-0581
H1I-A-TN	VARIABLE-OUTPUT MULTI-SPECTRUM LED - (WHITE / BLUE) NSN 6220-01-549-4174
H1I-A-TN CS	VARIABLE-OUTPUT MULTI-SPECTRUM LED - (WHITE / BLUE)
H1I-B-TN	VARIABLE-OUTPUT MULTI-SPECTRUM LED - (WHITE / IR) NSN 6220-01-549-4184
H1I-C-TN	VARIABLE-OUTPUT MULTI-SPECTRUM LED - (WHITE / RED) NSN 6220-01-549-4203
H1I-D-TN	VARIABLE-OUTPUT MULTI-SPECTRUM LED - (YELLOW-GREEN / IR) NSN 6220-01-549-4218
ADPT-H1I-DC	DPS CORE HELMET RAIL MOUNT
HLM-DI-TN	HELMET LIGHT RATCHET MOUNT
Z71	MOUNTING CLIP NSN 6220-01-549-4288



LED COLOR	OUTPUT (LUMENS)	RUNTIME (HOURS)	WEIGHT	DIMENSIONS	BATTERIES
WHITE	1.4 / 5 / 19.2	48 / 28 / 6	4.0 oz (113g)	2.2 in x 3.2 in x 2.4 in	(1) 123A
YELLOW/GREEN	1.4 / 5 / 19.2	48 / 28 / 6	4.0 oz (113g)	2.2 in x 3.2 in x 2.4 in	(1) 123A
BLUE	0.3 / 0.8 / 2.5	96 / 48 / 20	4.0 oz (113g)	2.2 in x 3.2 in x 2.4 in	(1) 123A
RED	0.3 / 0.8 / 2.5	96 / 48 / 20	4.0 oz (113g)	2.2 in x 3.2 in x 2.4 in	(1) 123A
IR	2 / 10 / 30.5 mW	44 / 17 / 6	4.0 oz (113g)	2.2 in x 3.2 in x 2.4 in	(1) 123A
IR STROBE	1.7 mW	120			



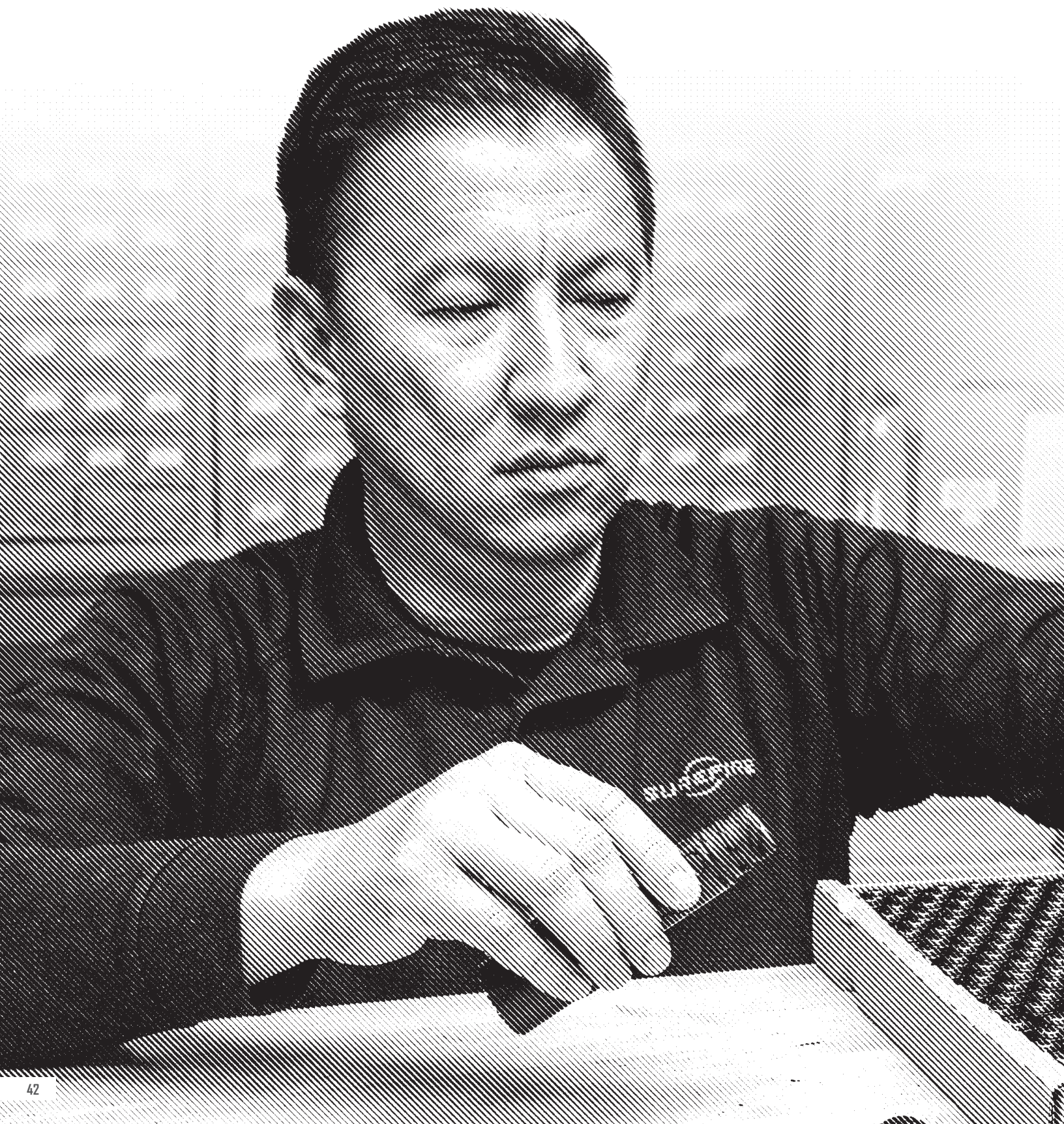
ADPT-H1I-DC



Z71



# BATTERIES





# DEFINITIVE POWER

SureFire is an innovator in the battery market as well as the tactical illumination, suppressor, and hearing protection markets. Our pursuit of greater energy density and more compact flashlights led us to pioneer the use of 123A lithium primary batteries in our flashlights and collaborate with the battery industry to make 123A batteries more useful. We continue to offer the best batteries in their respective classes today.

## DID YOU KNOW?

- + With a 10-year shelf life for worry-free storage, SureFire 123A lithium primary batteries are the gold standard in their class. A built-in heat/fault protection adds dependability. SureFire 123As are as reliable as the SureFire products they power.
- + SureFire batteries deliver superior power density and voltage maintenance compared to alkaline batteries for consistent, reliable performance.
- + SureFire batteries provide a wide range of temperature tolerance to power your SureFire product reliably in hot or cold weather conditions.
- + The SureFire SF18650B is the definitive battery in its class. Its high-performance, protected 3.6V lithium-ion cells are easily recharged via an integrated micro-USB port, saving you money.
- + You can charge SureFire SF18650B batteries with any compatible external cradle charger.
- + The SureFire SFLFP123 and the SFLFP123-KIT charger kit provide 123A lithium users with a cost-effective alternative to 123A lithium primary cells by offering the convenience of recharging.
- + SFLFP123 batteries are less energy-dense than SureFire 123A batteries, but you can recharge them for hundreds of cycles; they save money and offer the added benefit of being environmentally friendly.
- + The SFLFP123-KIT SKU indicates a pack of two SFLFP123 batteries plus a Micro-USB cradle charger. The SFLFP123 SKU indicates a pack of two SFLFP123 batteries without the cradle charger.
- + The SureFire SC1 spares carrier holds up to six SF123A or SFLFP123 batteries plus one P60/P90 lamp assembly, providing safe storage for your critical spares.







## 123A

PART #	DESCRIPTION
SF2-CB	2 123A CELLS, CARDED
SF6-BC	6 123A CELLS (Must order in multiples of 6 units)
SF12A-BB CS	12 123A CELLS, CLAMSHELL PACKAGE
SF12-BB	12 123A CELLS, BOXED NSN 6135-01-559-9641
SF72-BB	123A, 6 BOXES OF 12 CELLS
SF400-BULK	123A BULK BOX, 400 CELLS
SF1200-BULK	123A BULK BOX, 1,200 CELLS
SF38400-BULK	123A BULK, 38,400 CELLS



SF12-BB



SF72-BB



SF2-CB



SF6-BC



SF12A-BB CS

## SCI

PART #	DESCRIPTION
SCI	SPARES CARRIER, HOLDS 6 123A CELLS AND ONE P60/P90 LAMP ASSEMBLY NSN 6240-01-532-4209







## SFLFP123 & CHARGER KIT

PART #	DESCRIPTION
SFLFP123	2 LITHIUM IRON PHOSPHATE RECHARGEABLE CELLS
SFLFP123-KIT	2 LITHIUM IRON PHOSPHATE RECHARGEABLE CELLS & CHARGER



SFLFP123



SFLFP123-KIT

## SF18650B

PART #	DESCRIPTION
SF18650B	LITHIUM IRON RECHARGEABLE BATTERY





# SUPPRESSORS & MUZZLE DEVICES





# PROVEN TO BE THE BEST

SureFire SOCOM Fast-Attach<sup>®</sup> suppressors were chosen by the United States Special Operations Command (SOCOM) after crushing all competitors in the most rigorous suppressor trial in U.S. military history. Combat-proven, they deliver durability without equal, maintain minimal and consistent point-of-impact shift, and virtually eliminate muzzle flash and attenuate sound while remaining compact and lightweight. Our WARCOMP<sup>™</sup>, flash hiders, and muzzle brakes are the undisputed best in their respective classes, bar none. SureFire suppressors, muzzle devices, and training devices are 100% designed, engineered, and Made in the U.S.A.

## DID YOU KNOW?

- + You get what you pay for in a SureFire suppressor. That includes cutting-edge materials, redundant welding, and advanced engineering to ensure that it will withstand the punishment of extreme combat. With a service life exceeding tens of thousands of rounds, SureFire suppressors are the most durable and reliable on the planet.
- + What good is a suppressor if it compromises your marksmanship? Every SureFire suppressor maintains strict accuracy standards even with repeated attachment and removal. We test fire every SOCOM Fast-Attach suppressor to minimal and extremely consistent sub-1-MOA (minute of angle) point of impact shift and group size.
- + SureFire's patented Fast-Attach mounting system provides rock-solid attachment and easy removal without requiring any tools. It's on or off in a second, and once mounted it stays mounted, regardless of the number of rounds fired.
- + SureFire SOCOM suppressors deliver tremendous sound reduction for more effective hearing protection. At the range, this equates to less stress on shooters, whether they're veterans or novices. In combat conditions, the same is true for military and law enforcement operators going in harm's way to save lives.
- + More than merely suppressing the gunshot, SureFire SOCOM suppressors nearly eliminate first-round flash and greatly reduce dust signature to help keep the shooter's position virtually undetectable. This helps conceal a shooting team's location in a combat zone while also allowing easier team identification and communication.
- + SureFire SF<sup>®</sup> RYDER thread-on suppressors provide the best in full-auto-rated capability to 9 mm and .22-caliber handguns, carbines, and rifles. They provide extreme quiet in a lightweight and low-profile package that helps the shooter maintain consistent accuracy anywhere, anytime.
- + The SureFire WARCOMP is the world's most shootable flash hider, eliminating 98% of muzzle flash and reducing muzzle rise to help the shooter stay on target and achieve faster follow-up shots.
- + A SureFire SF3P flash hider or SFMB muzzle brake are the last of their kind you'll ever need. Designed to outlast the barrels on which they're mounted, they're precision-machined from U.S. mill-certified stainless-steel bar stock, heat-treated, and DLC-coated for extreme durability and corrosion resistance. They interface seamlessly with SureFire SOCOM suppressors.
- + SureFire Blank Firing Adapters exceed the needs of military and law enforcement agencies. The SF-BFA-556 and SF-BFA-762 closely mimic equivalent SureFire suppressors, enhancing the realism of the training experience.
- + SureFire Blank Safety Devices safely contain up to three fired rounds of M855 ammunition without injuring the shooter or others, providing critical safety during firearms training exercises.
- + Every SureFire Blank Firing Adapter, Blank Safety Device and Suppressor Trainer features the Fast-Attach system for quick, secure attachment and removal, no tools required.
- + Every SureFire suppressor and muzzle device is backed by our No-Hassle Guarantee.









## SUREFIRE FAST ATTACH<sup>®</sup> SYSTEM



### FAST-ATTACH<sup>®</sup>

Provides consistent rock-solid attachment of SureFire SOCOM suppressors in seconds without affecting group size, or point-of-impact



SLIDE SUPPRESSOR OVER ADAPTER



TIGHTEN LOCKING RING

### SOCOM556-RC2

PART #	DESCRIPTION
SOCOM556-RC2-BK	BLACK, FOR 10" OR LONGER BARRELS NSN 1005-01-668-4190
SOCOM556-RC2-DE	DARK EARTH, FOR 10" OR LONGER BARRELS NSN 1005-01-681-5089



CALIBER	WEIGHT	LENGTH	CONSTRUCTION
5.56 mm / .223 Cal	17.0 oz (482 g)	6.4 in (16.3 cm)	HIGH-TEMP ALLOY & SS

### SOCOM556-MINIZ

PART #	DESCRIPTION
SOCOM556-MINIZ-BK	BLACK, OPTIMIZED FOR 14.5" OR LONGER BARRELS
SOCOM556-MINIZ-DE	DARK EARTH, OPTIMIZED FOR 14.5" OR LONGER BARRELS



CALIBER	WEIGHT	LENGTH	CONSTRUCTION
5.56 mm / .223 Cal	15 oz (425 g)	5.0 in (12.7 cm)	HIGH-TEMP ALLOY & SS

### SOCOM556-SB2

PART #	DESCRIPTION
SOCOM556-SB2-BK	BLACK, FOR 10" OR SHORTER BARRELS NSN 1005-01-675-0311
SOCOM556-SB2-DE	DARK EARTH, FOR 10" OR SHORTER BARRELS



CALIBER	WEIGHT	LENGTH	CONSTRUCTION
5.56 mm / .223 Cal	17.0 oz (482 g)	6.4 in (16.3 cm)	HIGH-TEMP ALLOY & SS

### SOCOM556-MG2

PART #	DESCRIPTION
SOCOM556-MG2-BK	BLACK, OPTIMIZED FOR BELT-FED MACHINE GUNS
SOCOM556-MG2-DE	DARK EARTH, OPTIMIZED FOR BELT-FED MACHINE GUNS



CALIBER	WEIGHT	LENGTH	CONSTRUCTION
5.56 mm / .223 Cal	23 oz (652 g)	6.9" (17.5 cm)	HIGH-TEMP ALLOY & SS

### SOCOM762-Ti

PART #	DESCRIPTION
SOCOM762-Ti-BK	BLACK, FOR BOLT-ACTION PRECISION RIFLES
SOCOM762-Ti-DE	DARK EARTH, FOR BOLT-ACTION PRECISION RIFLES



CALIBER	WEIGHT	LENGTH	CONSTRUCTION
7.62 mm / .308 Cal	11.0 oz (312 g)	7.9 in (20.1 cm)	TITANIUM

### SOCOM762-MG2

PART #	DESCRIPTION
SOCOM762-MG2-BK	BLACK, OPTIMIZED FOR BELT-FED MACHINE GUNS
SOCOM762-MG2-DE	DARK EARTH, OPTIMIZED FOR BELT-FED MACHINE GUNS



CALIBER	WEIGHT	LENGTH	CONSTRUCTION
7.62 mm / .308 Cal	29 oz (822 g)	9.3 in (23.6 cm)	HIGH-TEMP ALLOY & SS

### SOCOM762-RC2

PART #	DESCRIPTION
SOCOM762-RC2-BK	BLACK, FOR 7.62 SELECT FIRE & .300 WM SNIPER RIFLES
SOCOM762-RC2-DE	DARK EARTH, FOR 7.62 SELECT FIRE & .300 WM SNIPER RIFLES



CALIBER	WEIGHT	LENGTH	CONSTRUCTION
7.62 mm / .308 Cal	21 oz (595 g)	8.4 in (21.3 cm)	HIGH-TEMP ALLOY & SS

### SOCOM762-MINIZ

PART #	DESCRIPTION
SOCOM762-MINIZ-BK	BLACK, OPTIMIZED FOR 16" OR LONGER BARRELS
SOCOM762-MINIZ-DE	DARK EARTH, OPTIMIZED FOR 16" OR LONGER BARRELS



CALIBER	WEIGHT	LENGTH	CONSTRUCTION
7.62 mm / .308 Cal	17.0 oz (482 g)	6.4 in (16.3 cm)	HIGH-TEMP ALLOY & SS







## SOCOM300-CQB

PART #	DESCRIPTION
SOCOM300-CQB-BK	BLACK, OPTIMIZED FOR BLACKOUT CQB
SOCOM300-CQB-DE	DARK EARTH, OPTIMIZED FOR BLACKOUT CQB



CALIBER	WEIGHT	LENGTH	CONSTRUCTION
7.62 mm / .308 Cal	17.0 oz (482 g)	6.4 in (16.3 cm)	HIGH-TEMP ALLOY & SS

## SOCOM300-SPS

PART #	DESCRIPTION
SOCOM300-SPS-BK	BLACK, OPTIMIZED FOR .300 BLK WEAPON SYSTEMS
SOCOM300-SPS-DE	DARK EARTH, OPTIMIZED FOR .300 BLK WEAPON SYSTEMS



CALIBER	WEIGHT	LENGTH	CONSTRUCTION
7.62 mm / .308 Cal	20 oz (566 g)	7.9 in (20.0 cm)	HIGH-TEMP ALLOY & SS

## SOCOM65-RC2

PART #	DESCRIPTION
SOCOM65-RC2-BK	BLACK, FOR SEMI-AUTO WEAPON SYSTEMS
SOCOM65-RC2-DE	DARK EARTH, FOR SEMI-AUTO WEAPON SYSTEMS



CALIBER	WEIGHT	LENGTH	CONSTRUCTION
6 mm / 6.5 mm / .260 Cal	21.0 oz (595 g)	8.4 in (21.3 cm)	HIGH-TEMP ALLOY & SS

## SOCOM65-Ti

PART #	DESCRIPTION
SOCOM65-Ti-BK	BLACK, FOR BOLT-ACTION PRECISION RIFLES
SOCOM65-Ti-DE	DARK EARTH, FOR BOLT-ACTION PRECISION RIFLES



CALIBER	WEIGHT	LENGTH	CONSTRUCTION
6 mm / 6.5 mm / .260 Cal	11.0 oz (312 g)	7.9 in (20.1 cm)	TITANIUM

## SOCOM338-Ti

PART #	DESCRIPTION
SOCOM338-Ti-BK	BLACK, FOR BOLT-ACTION PRECISION RIFLES
SOCOM338-Ti-DE	DARK EARTH, FOR BOLT-ACTION PRECISION RIFLES



CALIBER	WEIGHT	LENGTH	CONSTRUCTION
.338 Cal	22.0 oz (623 g)	9.9 in (25.1 cm)	TITANIUM

## SOCOM408-ELR

PART #	DESCRIPTION
SOCOM408-ELR-BK	BLACK, FOR .375 & .408 ELR BOLT-ACTION RIFLES
SOCOM408-ELR-DE	DARK EARTH, FOR .375 & .408 ELR BOLT-ACTION RIFLES



CALIBER	WEIGHT	LENGTH	CONSTRUCTION
.408 / .375 Cal	22.0 oz (623 g)	9.9 in (25.1 cm)	TITANIUM

## SOCOM50-SPS

PART #	DESCRIPTION
SOCOM50-SPS-BK	BLACK, FOR .50 BMG BOLT-ACTION / SEMI-AUTO
SOCOM50-SPS-DE	DARK EARTH, FOR .50 BMG BOLT-ACTION / SEMI-AUTO



CALIBER	WEIGHT	LENGTH	CONSTRUCTION
.50 Cal	86 oz (2438 g)	14.4 in (36.6 cm)	STAINLESS STEEL

## BORE ALIGNMENT RODS

PART #	DESCRIPTION
SF-RDD-9	BORE ALIGNMENT ROD FOR 9 MM
SF-RDD-545	BORE ALIGNMENT ROD FOR 5.45 MM
SF-RDD-556	BORE ALIGNMENT ROD FOR 5.56 MM
SF-RDD-65	BORE ALIGNMENT ROD FOR 6.5 MM
SF-RDD-68	BORE ALIGNMENT ROD FOR 6.8 MM
SF-RDD-762	BORE ALIGNMENT ROD FOR 7.62 MM
SF-RDD-338	BORE ALIGNMENT ROD FOR .338 CALIBER
SF-RDD-375	BORE ALIGNMENT ROD FOR .375 CALIBER
SF-RDD-408	BORE ALIGNMENT ROD FOR .408 CALIBER
SF-RDD-50	BORE ALIGNMENT ROD FOR .50 CALIBER



PROPER ALIGNMENT



OUT OF ALIGNMENT





SIMUNITION  
FX 9003

RTS-1

FAKED OVER 150  
UNDER WEAPON CONTROL

T74

T77

T20

T18

T8

T6

T4

PROXIMATE.COM

RTS-2

PATENT PENDING



## SF-TRAINER

PART #	DESCRIPTION
SF-TRAINER-556-I-BK	TRAINING SUPPRESSOR FOR SIMUNITION/FRANGIBLE AMMO
SF-TRAINER-556-I-DE	TRAINING SUPPRESSOR FOR SIMUNITION/FRANGIBLE AMMO NSN 1005-01-682-2626
SF-TRAINER-762-I-BK	TRAINING SUPPRESSOR FOR SIMUNITION/FRANGIBLE AMMO
SF-TRAINER-762-I-DE	TRAINING SUPPRESSOR FOR SIMUNITION/FRANGIBLE AMMO
SF-TRAINER-762MG-BK	TRAINING SUPPRESSOR FOR SIMUNITION/FRANGIBLE AMMO
SF-TRAINER-762MG-DE	TRAINING SUPPRESSOR FOR SIMUNITION/FRANGIBLE AMMO



## SF-BFA

PART #	DESCRIPTION
SF-BFA-556	BLANK FIRING ADAPTER, FITS ALL SOCOM 5.56 ADAPTERS NSN 1005-01-608-7572
SF-BFA-762	BLANK FIRING ADAPTER, FITS ALL SOCOM 7.62 ADAPTERS NSN 1005-01-608-7566



## SF-BFA-556-MK46

PART #	DESCRIPTION
SF-BFA-556-MK46	BLANK FIRING ADAPTER, FOR USE WITH MK46 WEAPON SYSTEMS



## SF-BFA-762MG-M240

PART #	DESCRIPTION
SF-BFA-762MG-M240	BLANK FIRING ADAPTER, FOR USE WITH M240B WEAPON SYSTEMS



## SF-BSD

PART #	DESCRIPTION
SF-BSD-556	BLANK SAFETY DEVICE, FOR USE WITH MK18
SF-BSD-556-M4	BLANK SAFETY DEVICE, FOR USE WITH M4 NSN 1005-01-660-6656

SF-BSD-556



SF-BSD-556-M4





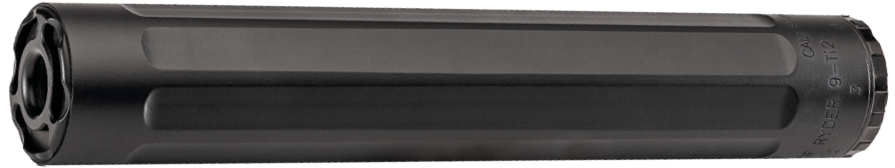




## SF<sup>®</sup> RYDER 9-Ti2

PART #	DESCRIPTION
SF RYDER 9-Ti2-1/2-28-BK	THREAD-ON 9 MM CALIBER TITANIUM SUPPRESSOR
SF RYDER 9-Ti2-1/2-28-DE	THREAD-ON 9 MM CALIBER TITANIUM SUPPRESSOR
SF RYDER 9-Ti2-Mi3.5X1 LH-BK	THREAD-ON 9 MM CALIBER TITANIUM SUPPRESSOR

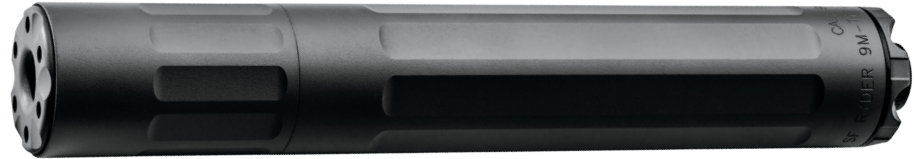
CALIBER	WEIGHT	LENGTH
9 mm	10 oz (283 g)	7.8 in (19.8 cm)



## SF<sup>®</sup> RYDER 9M-Ti

PART #	DESCRIPTION
SF RYDER 9M-Ti-1/2-28-BK	THREAD-ON 9 MM CALIBER MODULAR SUPPRESSOR
SF RYDER 9M-Ti-1/2-28-DE	THREAD-ON 9 MM CALIBER MODULAR SUPPRESSOR
SF RYDER 9M-Ti-Mi3.5X1 LH-BK	THREAD-ON 9 MM CALIBER MODULAR SUPPRESSOR
SF RYDER 9M-Ti-Mi3.5X1 LH-DE	THREAD-ON 9 MM CALIBER MODULAR SUPPRESSOR

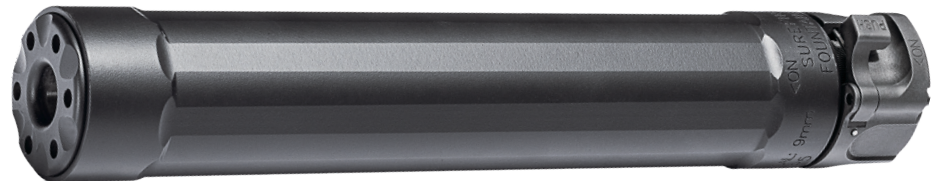
CALIBER	WEIGHT	LENGTH
9 mm	9 / 11 oz (255 / 311 g)	5.9 / 7.9 in (14.9 / 20 cm)



## SF<sup>®</sup> RYDER 9-MP5

PART #	DESCRIPTION
SF RYDER 9-MP5	9 MM CALIBER SUPPRESSOR W/ TRI-LUG ATTACHMENT FOR HK6 MP5 SMG

CALIBER	WEIGHT	LENGTH
9 mm	16 oz (453 g)	8 in (20.3 cm)



## SF<sup>®</sup> RYDER 22-S

PART #	DESCRIPTION
SF RYDER 22-S	THREAD-ON SOUND SUPPRESSOR, 1/2-28 THREADED BARRELS

CALIBER	WEIGHT	LENGTH
.22 LR/.17 HMR/.22 WMR	5 oz (141 g)	5.4 in (13.7 cm)



## RYDER ACCESSORIES

PART #	DESCRIPTION
PISTON-9-1/2X28	PISTON FOR SF RYDER 9-TI & 9M-TI
PISTON-9-Mi3.5X1LH	PISTON FOR SF RYDER 9-TI & 9M-TI
PISTON-9Ti2-1/2-28	PISTON FOR SF RYDER 9-TI2
PISTON-9Ti2-Mi3.5X1 LH	PISTON FOR SF RYDER 9-TI2
SF-SPCR-9	CARBINE SPACER FOR RYDER 9Ti AND RYDER 9M-TI
SF-SPCR-9-Ti2	CARBINE SPACER FOR RYDER 9Ti2
SF-TRILUG9-1/2-28	TRI-LUG ADAPTER FOR 1/2-28 THREAD, SF RYDER 9-MP5
SF-TRILUG9-1/2-36	TRI-LUG ADAPTER FOR 1/2-36 THREAD, SF RYDER 9-MP5
SF-TRILUG9-Mi3.5X1LH	TRI-LUG ADAPTER FOR Mi3.5X1LH THREAD, SF RYDER 9-MP5



PISTON-9Ti2



SF-SPCR-9-Ti2



SF-TRILUG9





## SF3P

PART #	DESCRIPTION
SF3P-556-1/2-28	3 PRONG FLASH HIDER FOR M4/M16/AR VARIANTS NSN 1005-01-626-8770
SF3P-556-MK46	3 PRONG FLASH HIDER FOR MK46 WEAPON NSN 1005-01-618-3966
SF3P-65-5/8-24	3 PRONG FLASH HIDER FOR 6MM/6.5MM/260 PRECISION RIFLES
SF3P-762-5/8-24	3 PRONG FLASH HIDER FOR AR10/LR308
SF3P-762MG-M240	3 PRONG FLASH HIDER FOR M240 NSN 1005-01-618-3950



### OPEN-TINE

Provides approximately 98% reduction in muzzle flash compared to a bare muzzle; conceals the shooter's location and preserves dark-adapted vision

## SFCT

PART #	DESCRIPTION
SFCT-556-1/2-28	CLOSED TINE FLASH HIDER FOR M4/M16/AR VARIANTS



## 3P ELIMINATOR

PART #	DESCRIPTION
3P-ELIMINATOR-556-1/2-28	3 PRONG FLASH HIDER FOR M4/M16/AR VARIANTS 6 1/2-28 THREADS
3P-ELIMINATOR-762-5/8-24	3 PRONG FLASH HIDER FOR 7.62 CALIBER 6 5/8-24 THREAD







## SF3P-50BMG-M2HB

PART #	DESCRIPTION
SF3P-50BMG-M2HB	3 PRONG FLASH HIDER FOR M2HB, FOR UNTHREADED BARREL

CALIBER	WEIGHT	LENGTH
.50 cal	36 oz (1020 g)	6.1 in (15.5 cm)



## SF3P-50BMG-M2A1

PART #	DESCRIPTION
SF3P-50BMG-M2A1	3 PRONG FLASH HIDER FOR M2A1, .50 CALIBER, THREADED BARREL

CALIBER	WEIGHT	LENGTH
.50 cal	23.8 oz (674.7 g)	4.9 in (12.4 cm)







## SFMB

PART #	DESCRIPTION
SFMB-556-1/2-28	MUZZLE BRAKE/ADAPTER FOR 5.56 CALIBER NSN 1005-01-668-7486
SFMB-65-5/8-24	MUZZLE BRAKE/ADAPTER FOR 6MM/6.5MM/260 PRECISION RIFLES
SFMB-762-5/8-24	MUZZLE BRAKE/ADAPTER FOR AR10/LR308 NSN 1005-01-624-1219
SFMB-338-3/4-24	MUZZLE BRAKE/ADAPTER FOR .338 CALIBER
SFMB-338-5/8-24	MUZZLE BRAKE/ADAPTER FOR .338 CALIBER
SFMB-338-M18X1.5	MUZZLE BRAKE/ADAPTER FOR AIAW / AIAK
SFMB-408-M22X1.5	MUZZLE BRAKE/ADAPTER FOR .408 AND .375 CALIBER
SFMB-408-3/4-24	MUZZLE BRAKE/ADAPTER FOR .408 AND .375 CALIBER



### ACCURACY

SureFire's Impulse Diffusion design minimizes blast and rear concussion effects for easier target tracking and faster shot-to-shot recovery

## PROCOMP

PART #	DESCRIPTION
PROCOMP-556-1/2-28	MUZZLE BRAKE (NON-SOCOM ADAPTER) FOR M4/M16/AR VARIANTS
PROCOMP-762-5/8-24	MUZZLE BRAKE (NON-SOCOM ADAPTER) FOR 7.62 CALIBER







## SFMB-50

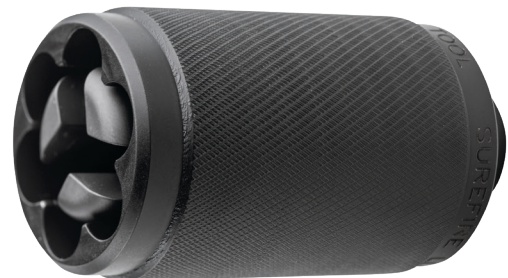
PART #	DESCRIPTION
SFMB-50-HTI	MUZZLE BRAKE FOR DESERT TECH HTL M25X1.5 THREAD
SFMB-50-M107	MUZZLE BRAKE FOR BARRETT M107, 7/8X14 THREAD
SFMB-50-TAC50	MUZZLE BRAKE FOR MCMILLAN TAC50, 1X14 THREAD

WEIGHT	LENGTH
5.2 oz (147 g)	5.2 in (13.2 cm)



## ADAPTER CARBON SCRAPING TOOL

PART #	DESCRIPTION
SF-ACST-556	SUREFIRE CLEANING TOOL FOR 5.56 SF3P, SFMB, & WARCOMP ADAPTERS NSN 5110-01-682-2653
SF-ACST-762	SUREFIRE CLEANING TOOL FOR 7.62 SF3P, SFMB, & WARCOMP ADAPTERS







## WARCOMP™

PART #	DESCRIPTION
WARCOMP-556-1/2-28	PORTED 3 PRONG FLASH HIDER FOR M4/M16/AR VARIANTS NSN 1005-01-646-9074
WARCOMP-556-M15X1	PORTED 3 PRONG FLASH HIDER FOR HK G36C
WARCOMP-65-5/8-24	PORTED 3 PRONG FLASH HIDER FOR 6MM/6.5MM/.260 CAL
WARCOMP-762-5/8-24	PORTED 3 PRONG FLASH HIDER FOR 7.62 CALIBER
WARCOMP-762-AK47	PORTED 3 PRONG FLASH HIDER FOR AK47
WARCOMP-762-M15X1	PORTED 3 PRONG FLASH HIDER FOR HK417



### VARIABLE TIMING

The WARCOMP's direction may be timed to optimize for right-hand, left-hand or neutral compensation

### SOCOM FAST-ATTACH® COMPATIBLE

SureFire's SOCOM Fast-Attach system provides a rock-solid mounting point for SureFire SOCOM Fast-Attach suppressors



### OPEN-TINE

Provides approximately 98% reduction in muzzle flash compared to a bare muzzle; conceals the shooter's location and preserves dark-adapted vision



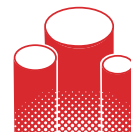
### ACCURACY

SureFire's Impulse Diffusion design minimizes blast and rear concussion effects for easier target tracking and faster shot-to-shot recovery



### STRONG & DURABLE

WARCOMP's are precision-machined from U.S. mill-certified stainless steel bar stock, heat-treated, and DLC-coated for extreme durability and corrosion resistance



### TOUGH AS NAILS

SureFire's advanced engineering and construction methods result in muzzle devices that are built to go the distance in the harshest combat conditions





## WARCOMP™ CTN

**PART #**

WARCOMP-556-CTN-1/2-28

**DESCRIPTION**

CLOSED TINE FLASH HIDER FOR M4/M16/AR VARIANTS

**WEIGHT**

2.7 oz (76.5 g)

**LENGTH**

2.4 in (6.0 cm)



### CLOSED-TINE

Reduces visible muzzle flash while greatly reducing the chance of snagging the muzzle on objects in the field

## REINFORCEMENT BAR CUTTER

**PART #**

RBC-556-CTN-BK

**DESCRIPTION**

RBC FOR USE WITH SUREFIRE WARCOMP-556-CTN ADAPTERS  
NSN 1005-01-665-9417

**WEIGHT**

15 oz (425 g)

**LENGTH**

4.0 in (10.2 cm)





# WEAPON COMPONENTS



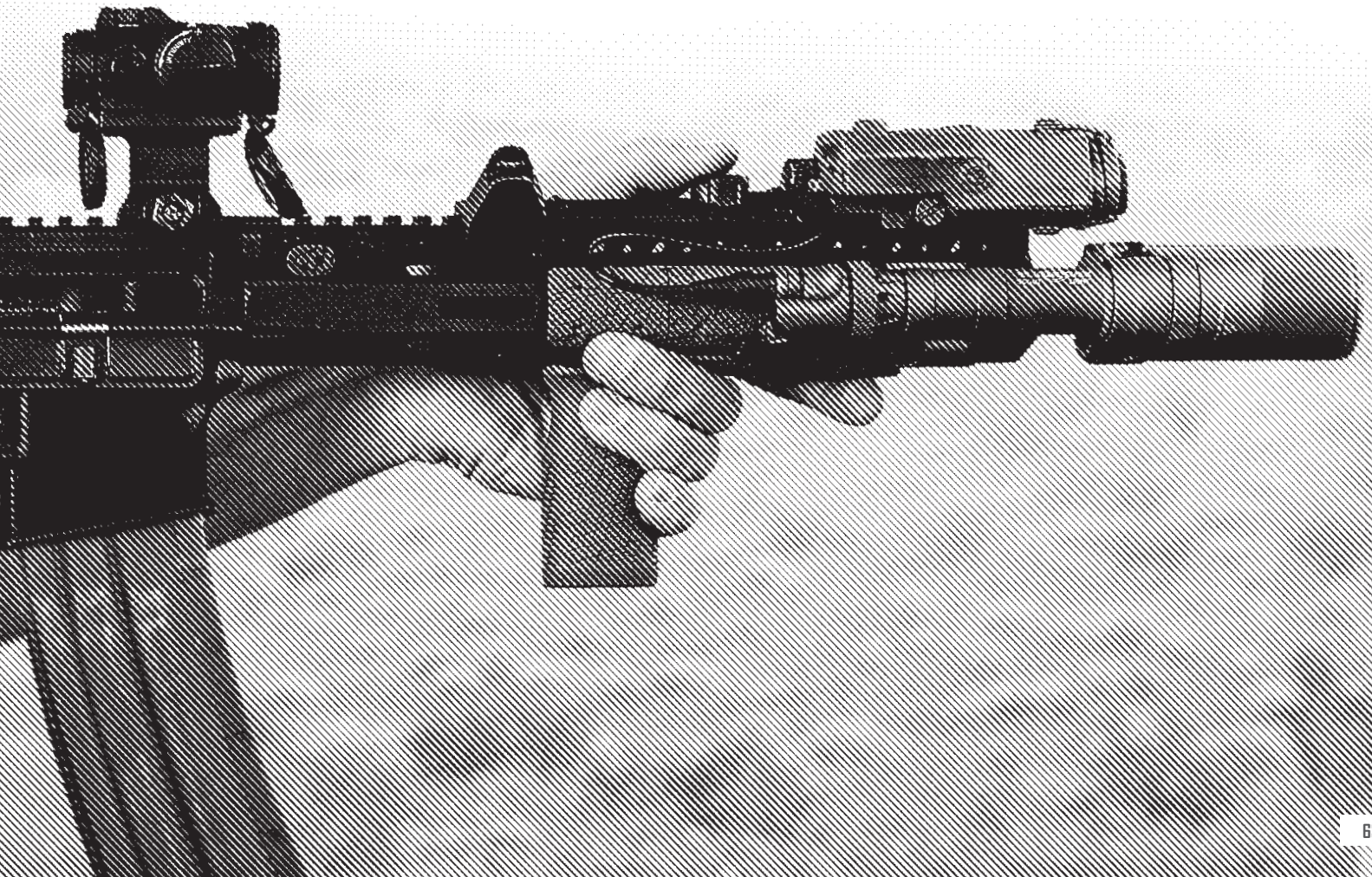


# GEAR UP FOR VICTORY

SureFire weapon components increase the accuracy and efficiency of modern sporting rifles. The SureFire Optimized Bolt Carrier (OBC) improves weapon function during both unsuppressed and suppressed firing. Dueck Defense Rapid Transition Sights (RTS) are the ultimate alternate sights, designed to enhance shooting performance while seamlessly mounting onto the rifle's rail. SureFire High-Capacity Magazines reduce reloads to keep you on target and in the match or in the fight. These products are 100% Made in the U.S.A.

## DID YOU KNOW?

- + The OBC's long-stroke design delivers 60% more travel beyond the magazine, increasing magazine feed time and reducing the chance of bolt-over-base malfunctions.
- + Dual-spring OBC dwell weight significantly delays bolt carrier direction change, increasing reliability.
- + The OBC's improved cam path delays bolt unlocking for a 15% decrease in chamber pressure before unlocking.
- + Self-lubricating coatings reduce friction for consistent, dependable OBC operation in the most adverse conditions.
- + The OBC system includes an optimized bolt carrier, buffer spring, and proprietary long-stroke H-weight buffer.
- + RTS are easy to install. They mount directly to the top Picatinny rail of the rifle at a 45-degree offset and the same height above the bore as standard M4/M16A4 sights. No special tools are required. Right- and left-handed versions are available.
- + RTS are built to last. Machined from 7075 aluminum alloy bar stock, they're extremely lightweight yet twice as strong as 6061 T6 aluminum.
- + RTS feature a low-profile design that does not interfere with the rifle's primary optic, and they are compatible with military infrared laser/illuminators; the front sight is designed to clear the beam path.
- + SureFire High-Capacity Magazines hold 60 rounds of ammunition; twice the capacity of standard magazines equals half required reloads. Magazine measures 1.66" thick, less than two 30-round magazines clipped together.
- + The design of SureFire High-Capacity Magazines features nesting polymer followers to ensure smooth feeding, Cadmium-coated springs that prevent binding and breakage, and rugged Mil-Spec hard-anodized aluminum construction for maximum durability.
- + All SureFire weapon components are backed by our No-Hassle Guarantee.







## SF-OBC

PART #	DESCRIPTION
SF-OBC-556	OPTIMIZED BOLT CARRIER GROUP FOR M4/M16/AR-VARIANT RIFLE CARBINE

### LONG-STROKE DESIGN

Delivers 60% more travel beyond the magazine, increasing magazine feed time and reducing the chance of bolt-over-base malfunctions

### CAM PATH

Improved cam path delays bolt unlocking for a 15% decrease in chamber pressure before unlocking



### DWELL WEIGHT

Dual-spring dwell weight significantly delays bolt carrier direction-change for increased reliability

### COATING

Self-lubricating coatings reduce friction for consistent, dependable operation in the most adverse conditions

### INCLUDED WITH OBC

Optimized bolt carrier, buffer spring and proprietary long-stroke, H-weight buffer 10/32" gas key screw provides more than double the shear strength of two Mil-Spec screws







## RAPID TRANSITION SIGHTS

PART #	DESCRIPTION
DD-RTS-SET	DUECK DEFENSE RTS SET
DD-RTS-TRITIUM	DUECK DEFENSE RTS SET WITH TRITIUM INSERTS
DD-RTS-FO	DUECK DEFENSE RTS SET WITH FIBER OPTIC INSERTS



DD-RTS-SET

## 60-ROUND MAGAZINE

PART #	DESCRIPTION
MAG5-60	60-ROUND MAGAZINE FOR 5.56 MM RIFLES





# HEARING PROTECTION





# HEAR US NOW, HEAR US LATER

Designed by an audiologist, SureFire EarPro® Sonic Defenders® hearing protection employs superior technology to prevent noise-induced hearing loss. You can choose between two styles: full block, for maximum protection on the range, or filtered, to eliminate harmful noise while allowing users to hear tactical communication and ambient sounds. Effective, comfortable, durable, and reusable, SureFire EarPro Sonic Defenders are a top choice for everyone, from tactical professionals to industrial workers who perform their duties in high-noise environments.

## DID YOU KNOW?

- + Sonic Defenders are the most effective in-ear, non-electronic hearing protection available, with Noise Reduction Ratings (NRR) ranging from 24dB to 30dB in the closed position and 11dB to 14dB in the open position. They protect against both constant and impulse noise.
- + Sonic Defenders provide a near-custom, all-day comfort fit. They are minimally obtrusive and don't affect cheek weld on the stock when firing a rifle like earmuff-style hearing protection does. Their lightweight, minimalist design also helps keep your ears cooler on a hot day.
- + Sonic Defenders don't just fit well, they stay put. SureFire's EarLock® retention rings lock the earplug/piece in place with seven "grab points," ensuring a proper fit and protective seal inside the ear canal. You can choose from models that feature SureFire's ergonomically correct curved flanges or replaceable Comply® Canal foam tips.
- + Sonic Defenders are available in full-block and filtered styles to accommodate user needs. Sonic Defenders filters reduce harmful sound while allowing users to hear conversations. Users can easily open or close the caps; the closed position provides maximum NRR/impulse noise attenuation.
- + Sonic Defenders are available in Black, Orange or Clear. Every set comes in a convenient carrying case and includes a retention lanyard.
- + SureFire's Universal Acoustic Coupler (UAC) is a highly effective, high-strength interface that accepts modern acoustic hearing tubes to accommodate two-way radio communication. Its two-position cap provides maximum hearing protection when closed and situational awareness when open.







## EPI0

PART #	DESCRIPTION
EPI0-MPR	COMPLY FOAM TIPPED, FULL BLOCK EARPLUGS, MEDIUM, 1 PAIR, CLEAR
EPI0-MPR-BULK	COMPLY FOAM TIPPED, FULL BLOCK EARPLUGS, MEDIUM, 25 PAIR, CLEAR
EPI0-BK-MPR	COMPLY FOAM TIPPED, FULL BLOCK EARPLUGS, MEDIUM, 1 PAIR, BLACK
EPI0-BK-MPR-BULK	COMPLY FOAM TIPPED, FULL BLOCK EARPLUGS, MEDIUM, 25 PAIR, BLACK
EPI0-OR-MPR	COMPLY FOAM TIPPED, FULL BLOCK EARPLUGS, MEDIUM, 1 PAIR, ORANGE
EPI0-OR-MPR-BULK	COMPLY FOAM TIPPED, FULL BLOCK EARPLUGS, MEDIUM, 25 PAIR, ORANGE



NRR RATING  
30

SNR RATING  
33





## EP5

### PART #

EP5-BK-MPR

EP5-BK-MPR-BULK

EP5-DR-MPR

EP5-DR-MPR-BULK

### DESCRIPTION

TRIPLE FLANGED, FULL BLOCK EARPLUGS, MEDIUM, 1 PAIR, BLACK  
NSN 6515-01-642-3319

TRIPLE FLANGED, FULL BLOCK EARPLUGS, MEDIUM, 25 PAIR, BLACK

TRIPLE FLANGED, FULL BLOCK EARPLUGS, MEDIUM, 1 PAIR, ORANGE

TRIPLE FLANGED, FULL BLOCK EARPLUGS, MEDIUM, 25 PAIR, ORANGE

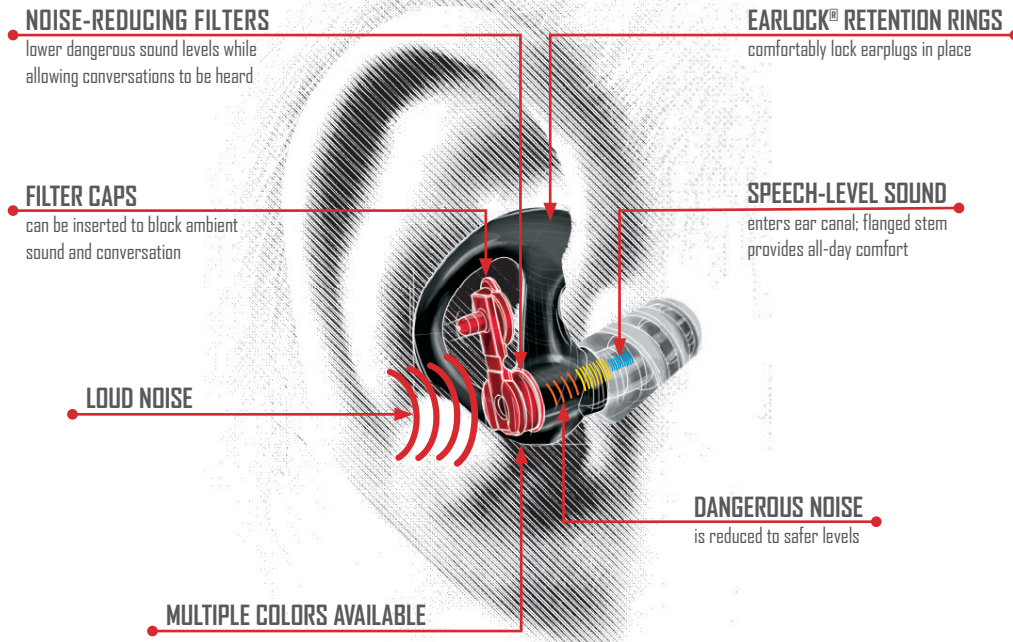


NRR RATING  
26

SNR RATING  
31



# FILTERED EARPRO® TECHNOLOGY



## EP3

PART #	DESCRIPTION
EP3-BK-MPR	DOUBLE FLANGED, FILTERED EARPLUGS, MEDIUM, 1 PAIR, BLACK NSN 6515-01-603-3450
EP3-BK-MPR-BULK	DOUBLE FLANGED, FILTERED EARPLUGS, MEDIUM, 25 PAIR, BLACK NSN 6515-01-606-4544
EP3-MPR	DOUBLE FLANGED, FILTERED EARPLUGS, MEDIUM, 1 PAIR, CLEAR NSN 6515-01-549-8453
EP3-MPR-BULK	DOUBLE FLANGED, FILTERED EARPLUGS, MEDIUM, 25 PAIR, CLEAR NSN 6515-01-606-4498



## EP4

PART #	DESCRIPTION
EP4-BK-MPR	TRIPLE FLANGED, FILTERED EARPLUGS, MEDIUM, 1 PAIR, BLACK
EP4-BK-MPR-BULK	TRIPLE FLANGED, FILTERED EARPLUGS, MEDIUM, 25 PAIR, BLACK NSN 6515-01-606-4552
EP4-MPR	TRIPLE FLANGED, FILTERED EARPLUGS, MEDIUM, 1 PAIR, CLEAR
EP4-MPR-BULK	TRIPLE FLANGED, FILTERED EARPLUGS, MEDIUM, 25 PAIR, CLEAR NSN 6515-01-606-4565
EP4-OR-MPR	TRIPLE FLANGED, FILTERED EARPLUGS, MEDIUM, 1 PAIR, ORANGE



## EP7

PART #	DESCRIPTION
EP7-BK-MPR	COMPLY FOAM TIPPED, FILTERED EARPLUGS, MEDIUM, 1 PAIR, BLACK
EP7-BK-MPR-BULK	COMPLY FOAM TIPPED, FILTERED EARPLUGS, MEDIUM, 25 PAIR, BLACK NSN 6515-01-622-2539
EP7-BK-LPR	COMPLY FOAM TIPPED, FILTERED EARPLUGS, LARGE, 1 PAIR, BLACK
EP7-BK-LPR-BULK	COMPLY FOAM TIPPED, FILTERED EARPLUGS, LARGE, 25 PAIR, BLACK NSN 6515-01-622-2558
EP7-MPR	COMPLY FOAM TIPPED, FILTERED EARPLUGS, MEDIUM, 1 PAIR, CLEAR
EP7-MPR-BULK	COMPLY FOAM TIPPED, FILTERED EARPLUGS, MEDIUM, 25 PAIR, CLEAR NSN 6515-01-622-2001
EP7-LPR	COMPLY FOAM TIPPED, FILTERED EARPLUGS, LARGE, 1 PAIR, CLEAR
EP7-LPR-BULK	COMPLY FOAM TIPPED, FILTERED EARPLUGS, LARGE, 25 PAIR, CLEAR NSN 6515-01-622-2001
EP7-COMPLY-ST-3SPR	6 EA SHORT SLIM, COMPLY TIPS, BLISTER NSN 5965-01-643-9010
EP7-COMPLY-ST-3MPR	6 EA SHORT STD, COMPLY TIPS, BLISTER NSN 5965-01-643-9238
EP7-COMPLY-ST-3LPR	6 EA SHORT LARGE, COMPLY TIPS, BLISTER NSN 5965-01-643-9240







## UAC

PART #  
EA10-UAC-ST

DESCRIPTION  
UNIVERSAL ACOUSTIC COUPLER ASSEMBLY

**1**

### VERSATILITY

Designed to fit either left or right Filtered Series EarPro without compromising the filter or radio acoustic tubing

**2**

### INNOVATIVE

Cap can be closed, without removing EarPro, to maintain highest level of hearing protection

**3**

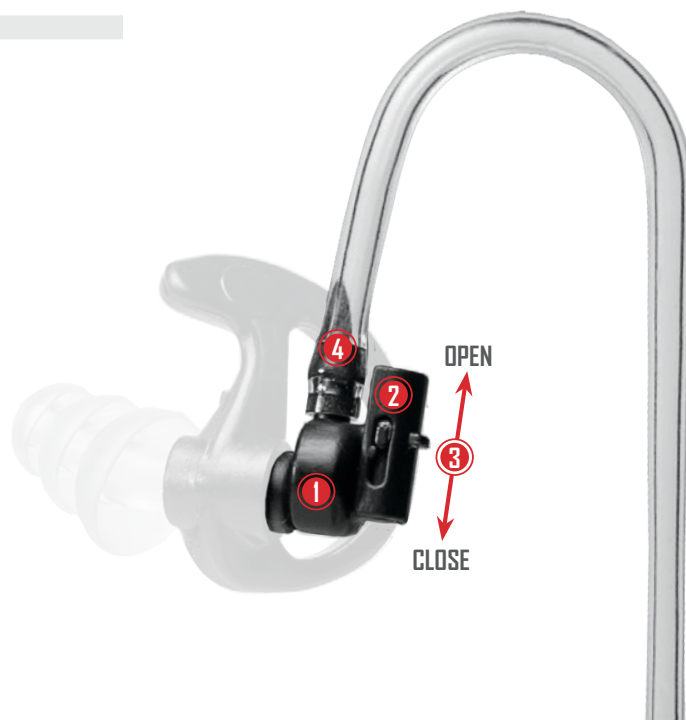
### ADAPTABILITY

Two-position cap; provides situational awareness and accommodates two-way radio communication

**4**

### COMPATIBILITY

The SureFire UAC coupler accept modern acoustic hearing tubes for ultimate compatibility





# NEED A PEN?

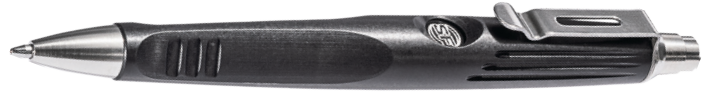
## PEN III

PART #	DESCRIPTION
EWP-03-BK	SUREFIRE WRITING PEN, BLACK, CLICK TAILCAP MECHANISM
EWP-03-TN	SUREFIRE WRITING PEN, TAN, CLICK TAILCAP MECHANISM



## PEN IV

PART #	DESCRIPTION
EWP-04-BK	SUREFIRE WRITING PEN, BLACK, CLICK TAILCAP MECHANISM







**SUREFIRE®**

BRAND BOOK















# MISSION

**SureFire is committed to manufacturing exceptional products** for those who go in harm's way and those who demand the ultimate in quality, innovation, and performance. For more than 40 years, we've remained 100% accountable to our warfighters, peacekeepers, and demanding civilians by providing the most innovative and reliable tools money can buy. No compromises. No corners cut. Just proven performance. Our dedicated staff includes numerous veterans who've had skin in the game. If our tools increase good guy survivability and mission accomplishment, then we have accomplished ours.





















PHOTOMETER

CAL

4

COAXIAL CABLE

Photometer

Newport

VPT-3





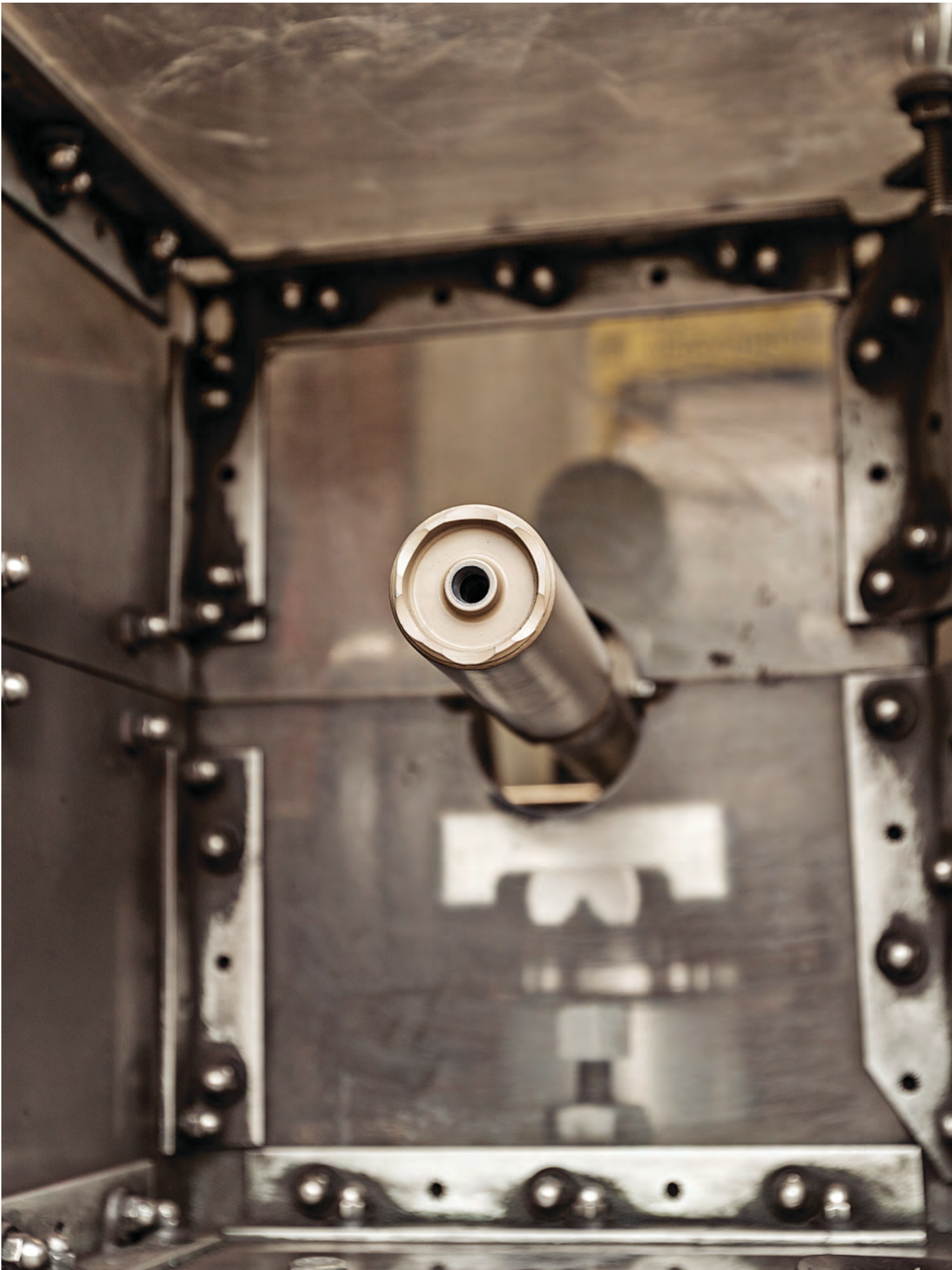
## RESEARCH & DEVELOPMENT

**We relentlessly pursue perfection.** We spend countless hours trying new and cutting-edge technologies and processes. The knowledge we gain is what fuels SureFire innovation, and our dedication to R&D has increased the capabilities of our products since Day 1. Intense illumination with the most precise optics. Ultracompact WeaponLights that don't sacrifice quality or functionality. Suppressor technology that delivers unequaled performance. Industry-leading hearing protection. Our engineers work tirelessly to make SureFire products the finest and most innovative in the world because your security is at the heart of our mission. We know that someday, maybe tomorrow, you might have to trust one of our products to save your life. That's why we do what we do. You're worth the investment.









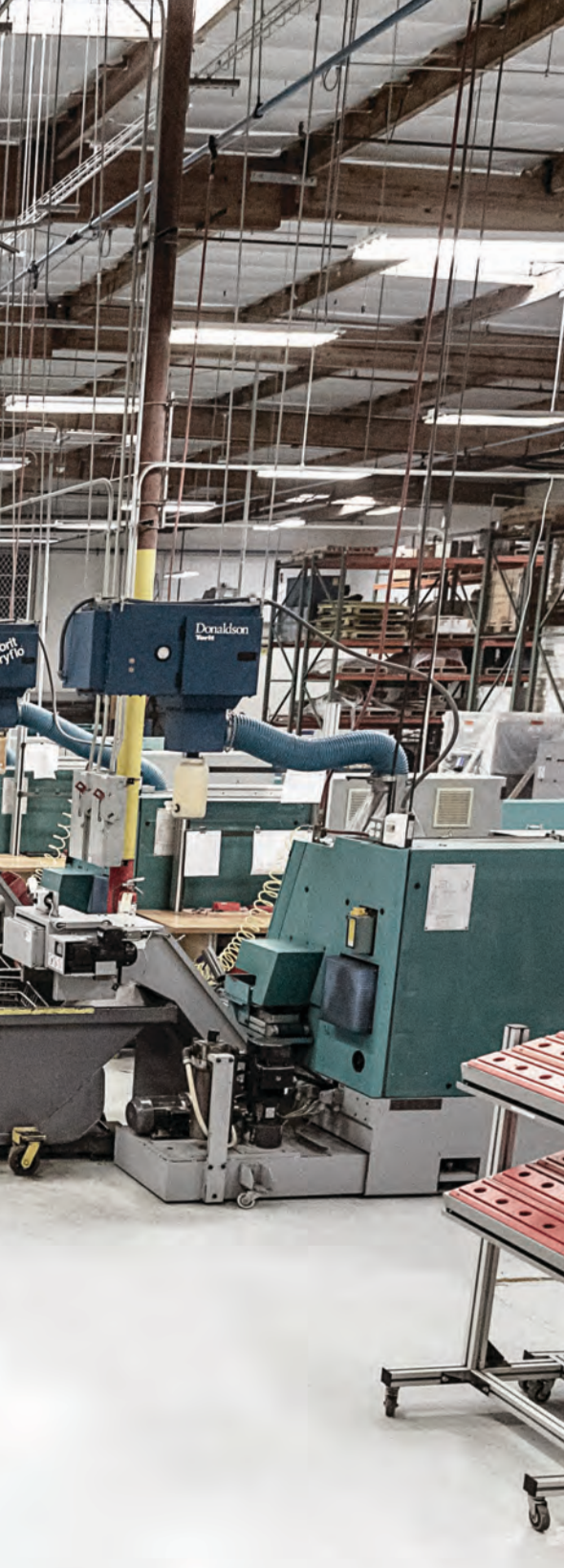




INDEX  
R200

Top  
Dryto





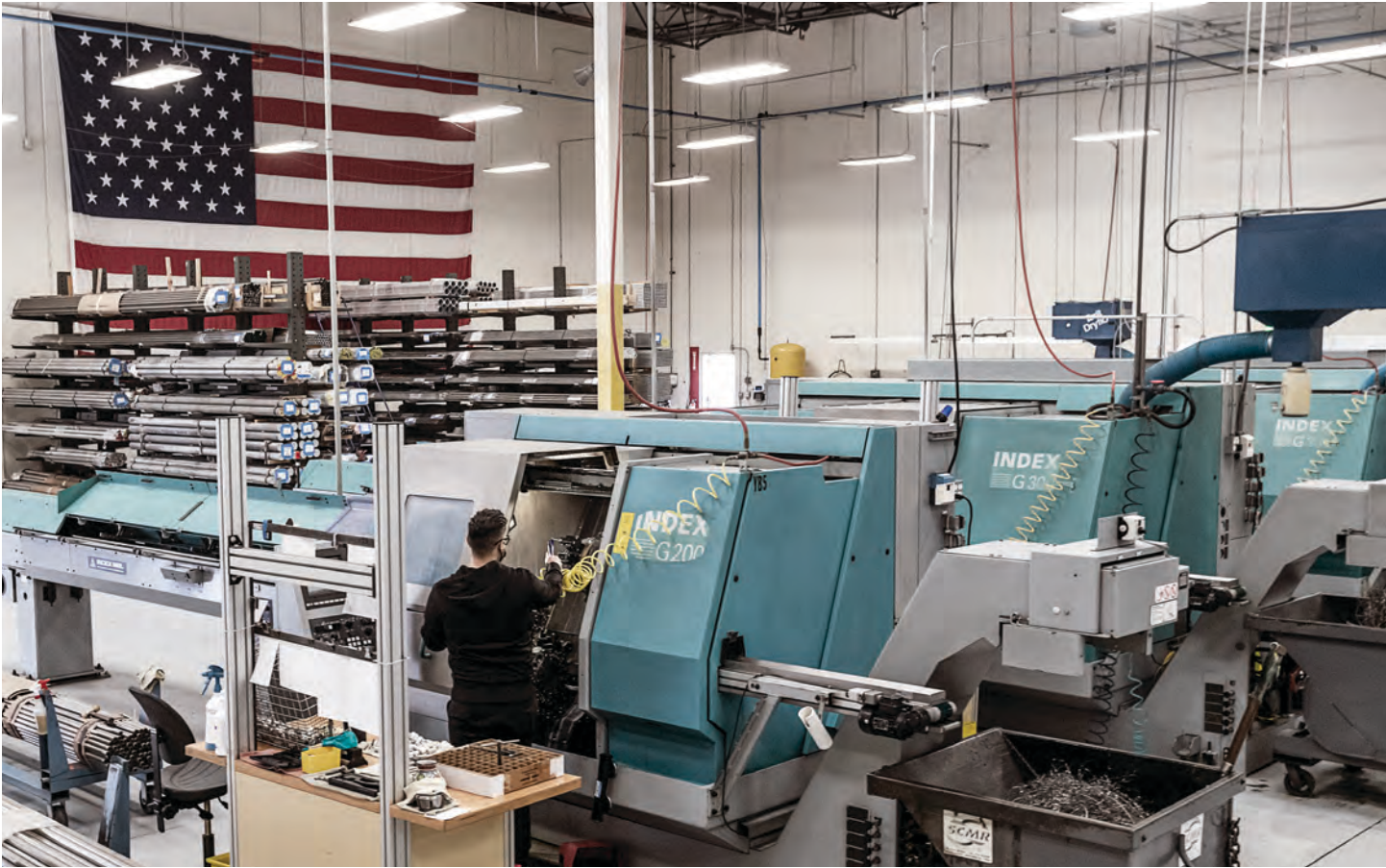
## MANUFACTURING

**Made in America means something to us.** Manufacturing in the U.S.A. is one of the pillars on which SureFire built its legacy, and we've invested millions in high-tech software, expert programmers, the most sophisticated CNC machines, and pinpoint-accurate laser welding equipment. Day and night, our highly dedicated American workforce turns and assembles the best tactical products money can buy. We use only the finest aerospace-grade billet aluminum, high-temperature Inconel alloy, U.S. mill-certified steel, DFARS-compliant titanium, and glass-filled, UV-stabilized polymers. Our combat-proven suppressors and high-capacity magazines are 100% Made in the U.S.A. Even though nearly all materials for our lights qualify as Made in the U.S.A., the lack of domestic LED manufacturers forces us to source our LEDs overseas. Although Federal Trade Commission regs prevent us from classifying our world-class illumination tools as Made in the U.S.A., they are designed, machined and assembled in America by Americans, and every SureFire product meets the criteria of the Buy American Act. The SureFire difference is quality you can feel, superior functionality you can see, and reliability you can trust with your life.





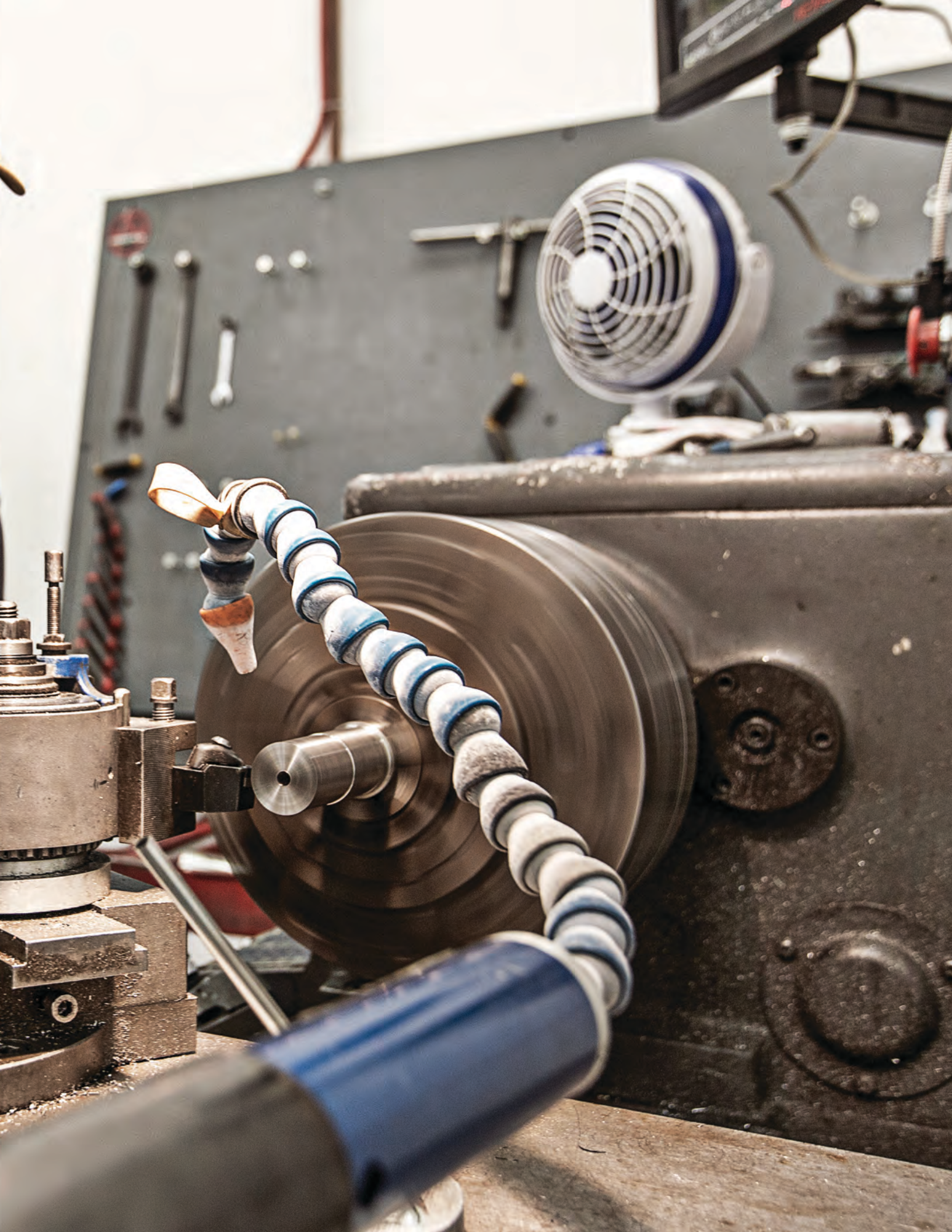




















## SYSTEMS

**See better. Hear better. Shoot better.** From scorching deserts to sweltering jungles to frigid arctic zones, SureFire products are designed to work in concert, creating a complete security ecosystem. Our handheld, hands-free, and weapon-mounted lights deliver the highest degree of performance and versatility. Our EarPro® hearing protection greatly reduces your chance of suffering Noise-Induced Hearing Loss (NIHL) in any high-noise environment. Our SOCOM® suppressors attenuate muzzle report and virtually eliminate muzzle flash. Together they protect your hearing and increase your odds of survival in a global conflict, on a graveyard watch, or in a personal defense situation. Whatever the task at hand, SureFire makes the right tool for it.

















## TRAINING

**The best tools in the world will do you no good if you don't know how to use them.** SureFire has a vested interest in its customers receiving training. That's why we have always supported the world's top experts, who help others expand their skill set. We've supported competitive shooting for decades because we know competition fosters innovation in both techniques and gear. It's also why we continue to increase the number of SureFire Field Notes episodes on our YouTube channel, where you can log on and receive a wealth of education and drills from the best firearms instructors in the business – all of it free. We encourage you to attend as many in-person training classes as you can and practice what you've learned until it becomes second nature. We want you to perform the same way SureFire products perform, with impeccable precision.

















## CORE

**We are used to dealing with demanding customers,** from military professionals who are the tip of the spear to citizens who take their personal security seriously and train accordingly. The same is true of the law enforcement professional working downtown streets or the extreme outdoorsman who enjoys life as far away from civilization as possible. Rugged and resilient, these heroes demand performance. They know that having the right gear can mean the difference between life and death, and there's simply no room for second best. We're honored to work hand in hand with them as we continue to develop the most durable, most reliable products available. We offer the very same SureFire products they use on the front lines, the back alleys, and the most remote locations, to anyone who will settle for nothing less than the proven performer.

































































RID STAINLESS CAP  
www.ridocrigano.com

DISCOVER

























## FUTURE

**Our future looks bright.** We will never deviate from the SureFire way of doing things, leading from the front as we continue our relentless pursuit of the newest technology, the finest materials, and the latest manufacturing techniques. Being the subject matter experts in our field, we continue to collaborate with the most brilliant scientific minds in the fields of optics, ballistics, metallurgy and acoustics. Innovation and the pursuit of the ultimate in reliable performance and durability are how we continue to raise the bar. There is no doubt that the products we are developing right now will push the boundaries of what is thought to be possible and shape the industry we pioneered.









When it comes to quality hearing protection & enhancement, EarPro is the brand you can depend on.