



EXPLODED VIEW
& PARTSLIST

Model 2240
.22 cal. CO² Pistol

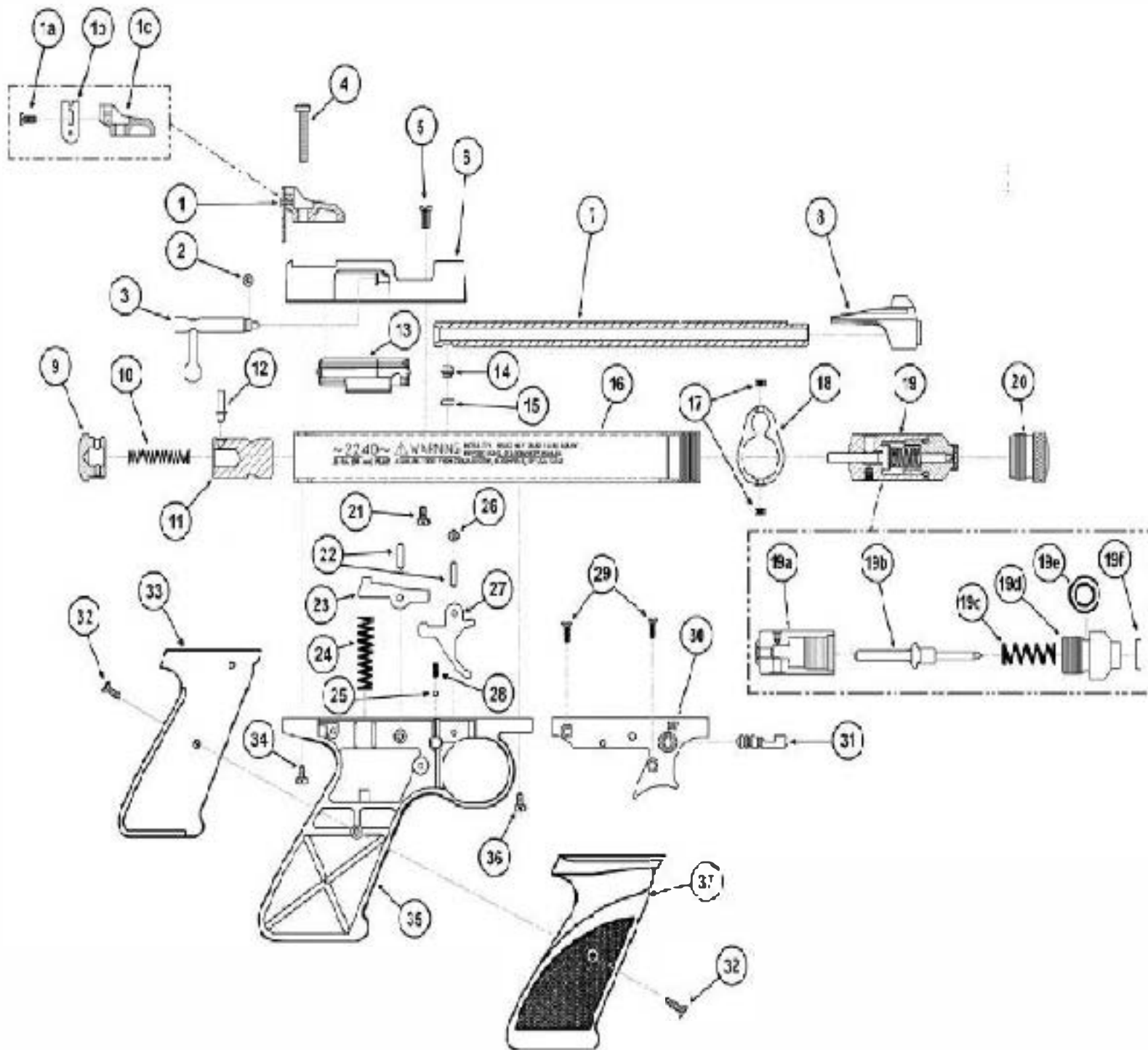


2240 PART LIST

	PART NUMBER	DESCRIPTION
1	1322A059	Rear Sight Assembly
1a	1377-065	Screw, Sight Blade
1b	1322A058	Sight Blade
1c	1377-064	Rear Sight
2	970-028	Seal, .22 Breech
3	1322-066	Bolt, .22 Caliber
4	1322-015	Screw, Rear Breech
5	1322B027	Screw, Breech
6	1377-074	Breech
7	2240-002	Barrel, .22 Caliber
8	788-101	Front Sight
9	2250-004	Tube Plug
10	782-024	Spring, Hammer
11	2300-050	Striker
12	2100A011	Pin, Hammer
13	1377-077	Base, Action
14	1322A026	Sleeve
15	130-036	Seal, Face
16	2240-003	Tube, Powerlet
17	88-089	Set Screw (2)
18	2240-001	Barrel Band
19	2250-003	Valve Assembly
19a	2250A010	Valve Body
19b	2250-016	Valve Stem Assembly
19c	788-061	Spring
19d	2250-011	Spring
19e	130-035	O-Ring
19f	G397-012	Chamber Plug, Face
20	2250-013	Knob, Piercing
21	151-015	Screw, Valve
22	1322-045	Pin, Trigger
23	1322A048	Sear
24	1377-080	Spring, Sear
25	105-039	Ball, Steel Safety
26	111A067	Washer
27	1300-017	Trigger
28	1322-017	Spring, Safety
29	1322-054	Screw, Cover (2)
30	1322B044	Cover

	PART NUMBER	DESCRIPTION
31	1322-052	Safety
32	105-054	Screw, Grip (2)
33	151-020	Grip, Left Hand
34	1322A029	Screw, Rear Frame
35	1322B051	Frame
36	130B031	Screw
37	151-019	Grip, Right Hand

- This parts list is intended to be an informational guide in ordering parts. It is not instructional material and we therefore assume no responsibility for those who use the same without proper factory training.
- Please order by part number and description.
- Check or money order for the total price must accompany the order.



Learn more about hunting and shooting we have.