



Here at BSA Guns, we are extremely proud of our heritage and so we should be, with a history going back over 150 years as a fire-arms manufacturer. However, our history is only half the story. The future is even more exciting and enticing. Using the most modern technologies available in Design and Development at our headquarters, in Birmingham, England, coupled with a unique mix of craftsmanship and precision manufacturing, we truly are at the cutting edge of Air Rifle Design and Manufacture.

But don't just take our word for it, join us on the BSA journey and don't get left behind!



Made in Birmingham



The BSA Family

When you join the BSA family, you're investing in a company with an unrivalled airgun pedigree and a worldwide reputation for quality, service and innovative design. We're proud of that reputation and of the gunmaking heritage on which it was founded. While our history inspires us, we're every bit as proud of our present range of products and even more excited about our future.

Production of Barrels

The barrel of an air rifle has an even greater influence on accuracy than many shooters realise. Not only must a barrel be expertly made with precision rifling, a properly finished bore and a perfectly true 'crown' at the muzzle, the entire barrel setup must be compatible with the rifle that it is fitted to and the pellets used in it. For all of these factors to come together for every rifle, total control over barrel production is required. That is why BSA always makes its own barrels.

Our unmatched experience in airgun-making has proven that the degree of control we insist on is absolutely essential for top performance. At BSA we control every process that goes into the making of a barrel, from the initial selection of the steel blanks, through to the forming of the bore and its rifling, all the way to the final finishing. We know that every one of these processes has a significant effect on the performance of a barrel, and that is another reason we maintain full control of them.

As you can see, at BSA we do things our own way. Our barrels are not only designed and made by us, to our exclusive specifications, their configuration is unique to BSA. We're not different for the sake of it though. We do things our way because we know it makes our products better, and making better products is what made us successful for over 150 years.

EVERY BSA BARREL IS RIFLED USING COLD HAMMER FORGING FOR

TOTAL ACCURACY



IT TAKES 35,000 HAMMER BLOWS AND 150 YEARS OF KNOW-HOW TO CREATE THE PERFECT BARREL.

Every BSA barrel is cold hammer forged to give you the highest quality and superior accuracy from your rifle. Using an intense machining process usually reserved for military grade fire arms, each barrel is created from a solid bar which is deep hole drilled ensuring the bore is perfectly straight.

Each barrel is rifled and subjected to 35,000 hammer blows, increasing its length by 15% - delivering a harder wearing barrel with a natural choke to help you deliver a more precise shot.

When accuracy matters, demand BSA.

HAND MADE IN BIRMINGHAM ENGLAND FOR OVER 150 YEARS



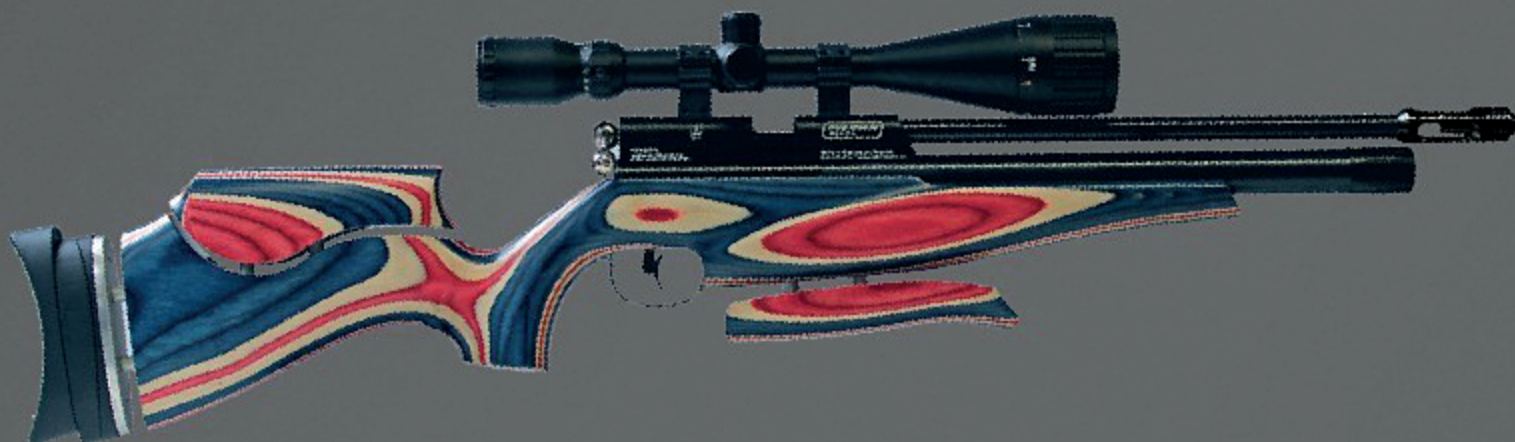


For decades the name Gold Star has been associated with the pinnacle of BSA motorcycles and Air Rifles, and here we are announcing the next chapter for this iconic name, with the launch of our new PCP Air Rifle the Gold Star SE.

Designed in conjunction with Hunter Field Target shooters and Hunters around the world, the new BSA Gold Star SE Pre Charged Pneumatic Air Rifle is a feature packed product delivering unprecedented performance and value for money in its class with a recommended retail selling price of only £899.



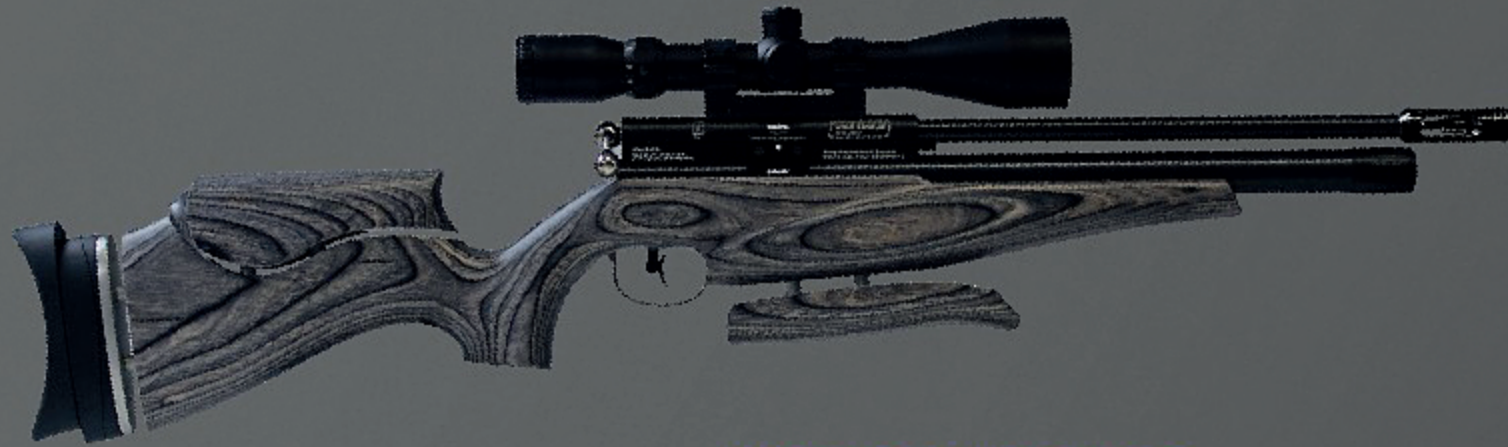
BSA guns are the main sponsors for the HFT Masters.



Air stripper

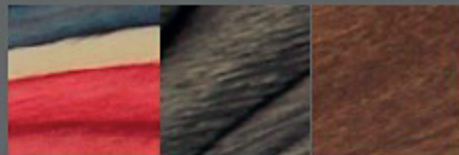
For even greater accuracy. Attached to our ECHF Barrel via the standard 1/2" UNF thread, BSA's Air Stripper has an adjustable cone which removes turbulent air from around the pellet that can affect its flight stability and precision. Because we have retained the 1/2" UNF thread on the barrel, the shooter can remove the Air Stripper and fit a standard sound moderator for improved noise reduction when hunting.





Choose your colour & material

Including two laminated stocks with colours of Red, White and Blue, plus our 'Black Pepper', and for our more traditional shooters a classic Oiled Finish Walnut.



ECHF Barrel

This takes our already world famous Cold Hammer Forged Barrel to a new level of consistency and performance. Our Enhanced Cold Hammer Forged Barrel will further our reputation for some of the best barrels in the world.

On board pressure gauge & quick fill system

Allows for easy, problem free pressure charging and monitoring of the high pressure air supply for this rifle.



Adjustable Stock

With 12 axis of adjustment for the Butt pad, Cheek piece and palm rest, yet still retaining the classic BSA look.



Features

- Fully adjustable 'hunter' style stock
- Three choices of colour and material are available
- Features our ECFH barrel
- Available in both single & multi shot versions
- BSA's 6th generation multi shot magazine
- Features our air stripper
- On board pressure gauge and quick fill system
- Regulated Power Delivery
- 75 shots .177 | 90 shots .22
- Single Shot Adapter available to convert your Multi-shot Rifle to a Single Shot

Multishot Magazine

Rotor numbered Smoother indexing High impact polymer base Finger groove in back plate Knurled rotor for easy use.

.177 and .22 magazine now with last shot indicator.




.177

.22

Single shot adaptor for competitions.



Combined with 3 stock options, multishot, single shot or dual use by adding the optional Single shot adaptor, this really is the Ultimate all round air rifle, possibly the only Air Rifle you'll ever need to buy.

Made in Birmingham, England 

R10SE REGULATED

2in1 *It's Your Choice*

The BSA R-10 SE can be configured from a shrouded barrel to VC - its your choice.

ALSO AVAILABLE IN



Black Pepper



Black Edition



Realtree Camo



COMES WITH
2X MAGAZINE



MULTI ADJUSTABLE BUTT PAD

LEFT HANDED
VERSIONS AVAILABLE

AN EVOLUTION OF A CLASSIC



NEW BARREL SHROUD
(CCS) Customer Configurable Shroud with enhanced Silencer capabilities (Twice as quiet as the previous Bull Barrel)



AVAILABLE IN STANDARD OR SUPER CARBINE LENGTH

IMPROVED REGULATOR
Up to 25% more shot count



*R10 SE post CCS customisation

- Fully regulated PCP rifle achieving consistent and dependable accuracy
- Detachable buddy bottle delivering up to 225 shots per fill
- Available in Walnut, Realtree Camo and Black Editions
- Adjustable butt pad
- Fully adjustable 2 stage trigger
- Pressure gauge and "on rifle" quick fill system
- New self-actuating magazine system
- Enhanced trigger function for total shot control
- Ambidextrous stock (except Walnut)



**NEW & IMPROVED
Trigger function**

Breaks even more cleanly than before giving even better shot control



Standard / Super Carbine

Walnut



Black Edition





Standard

Super Carbine



Realtree Camo



Black Pepper





Specifications

R-10 SE Standard Length

Overall Length	102cm / 40 in
Barrel Length	39.5cm / 15.5in
Weight	3.2kg / 7.4lb
Air Reservoir Volume	200cc Approx
Shot Count 12ftlb	.177=190 .22=250 .25=250
Valve Type	Regulated
Barrel Thread	1/2" UNF

R-10 SE Super Carbine Length

Overall Length	97cm / 38.2 in
Barrel Length	39.5cm / 15.5in
Weight	3.3kg / 7.4lb
Air Reservoir Volume	200cc Approx
Shot Count 12ftlb	.177=190 .22=250 .25=250
Valve Type	Regulated
Barrel Thread	1/2" UNF

Multishot Magazine

Rotor numbered Smoother indexing High impact polymer base Finger groove in back plate Knurled rotor for easy use.

.177 and .22 magazine now with last shot indicator.

NEW & IMPROVED - Shot count

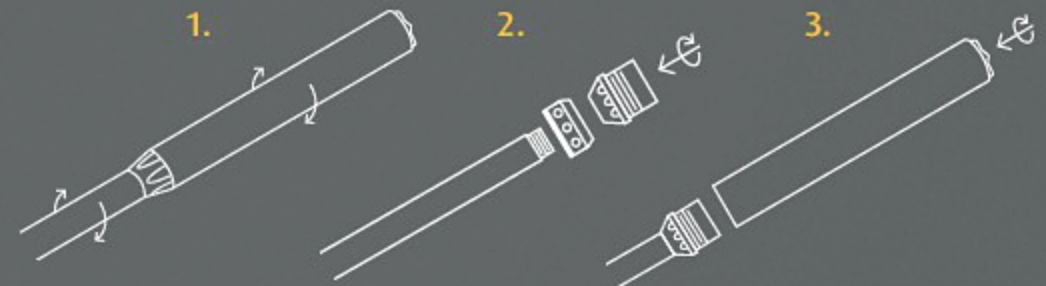
.22 - increased by 11% to 250	■
.25 - increased by 11% to 250	■
.177 - increased by 15% to 190	■

R10-SE comes with 2 magazines



CCS How to configure the R10 SE shroud

1. Remove silencer and shroud. 2. Slide the nut down the barrel and tighten. Screw the silencer connector to the barrel end. 3. Screw the silencer onto the connector. All parts included with rifle.



SCORPION SE



Strike fast!

- Class leading shot count across all 3 calibres - .177, .22 and .25
- Ergonomically designed ambidextrous stock
- Lightweight 'fast strike' hammer system gives increased efficiency
- Fully adjustable 2 stage trigger
- Pressure gauge and quick fill system
- Self-actuating magazine system
- Enhanced trigger function for total shot control
- Tactical version with new ambidextrous synthetic stock and black bolt
- Flatter power curve
- FAC version available

Scorpion SE	
Overall Length	88cm / 35in
Barrel Length	38.5cm / 15.2in
Weight	3.1kg / 6.8lb
Air Reservoir Volume	96cc Approx
Shot Count 12ftlb	.177=65 .22=100 .25=100
Valve Type	Self Regulating
Barrel Thread	1/2" UNF

Left hand versions available

Available in Realtree Camo, Beech and Tactical Stock.

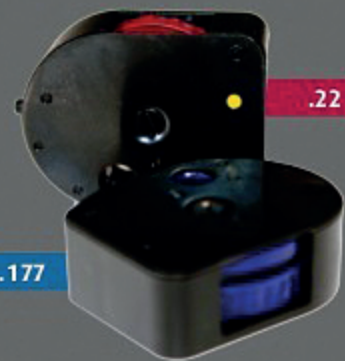
ULTRA JSR **NEW**

The only dedicated Junior PCP

Specially custom designed Junior Beech stock



*OVER 120 SHOTS IN EITHER
CALIBRE .177 & .22*



Ultra JSR

Overall Length	69cm / 27.1in
Barrel Length	30cm / 11.8in
Weight	2.5kg / 5lb
Air Reservoir	Volume 63cc Approx
Shot Count	.177 = 120 .22 = 120
Valve Type	Self Regulating
Barrel Thread	1/2" UNF

Features

- Bolt Action
- On board Pressure Gauge
- Cold Hammer Forged Barrel 1/2" UNF threaded barrel
- 6 ft / lb energy
- BSA 'Ultra' trigger
- Full Size Ultra synthetic stock can be fitted as your child grows



ULTRA SE

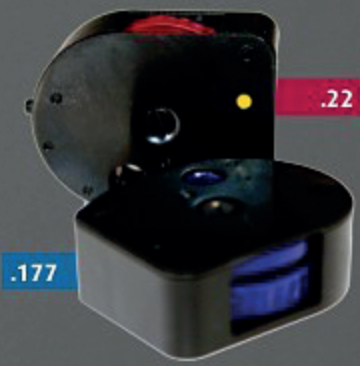
Ultra SE

Overall Length	82cm / 32in
Barrel Length	30cm / 11.8in
Weight	2.6kg / 5.7lb
Air Reservoir Volume	63cc Approx
Shot Count 12ftlb	.177=40 .22=50 .25=50
Valve Type	Self Regulating
Barrel Thread	1/2" UNF



20% increase in shot count
Pressure gauge
Bolt action

- Class leading shot count across three calibres - .177, .22 and .25
- Bolas bolt action
- Ergonomically designed ambidextrous stock
- Lightweight 'fast strike' hammer system gives increased efficiency
- Fully adjustable 2 stage trigger
- Left hand version available
- Integrated pressure gauge
- BSA's self-actuating magazine system
- Enhanced trigger function for total shot control
- Tactical version with ambidextrous synthetic stock
- Flatter power curve



ULTRA XL

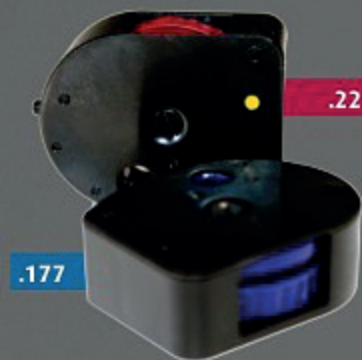


All new

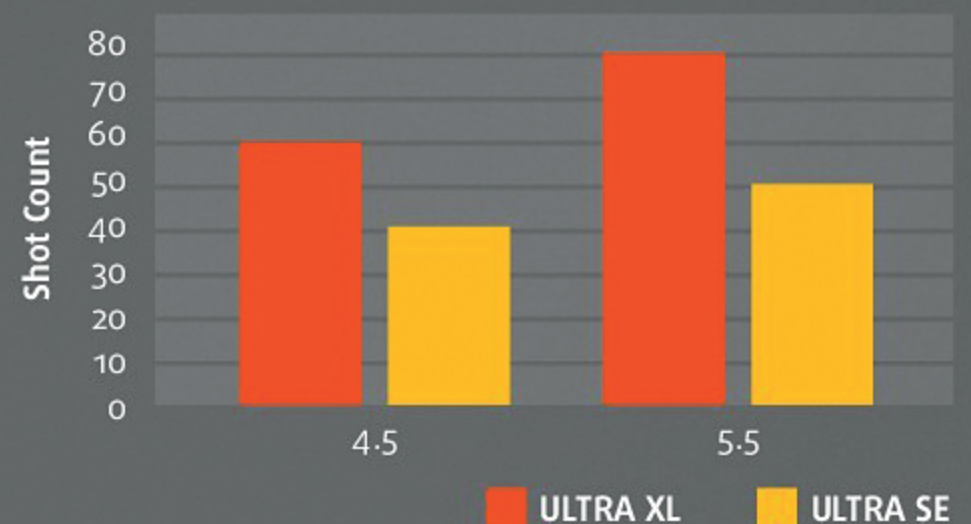
- Ambidextrous Thumbhole Stock.
- Adjustable Cheek Piece.
- Fully Adjustable Match Trigger.
- Efficient Valve Design.
- Increased Cylinder Capacity.
- Available in higher powers.

Additional Features

- Made in Birmingham, England.
- Bolt Action.
- 10 Shot Magazine.
- 'Quick fill' pressure re-charge system.
- On-board pressure gauge.
- Cold Hammer Forged barrel.
- .22 (5.5mm) & .177 (4.5mm) calibres.

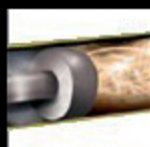


BSA ULTRA XL SHOT COUNT vs ULTRA SE SHOT COUNT





For years, air guns have been powered by a metal main spring which when compressed and then released produces the energy to propel the pellet down the barrel. Now, we have taken our top selling models added the SE refinements and powered it using a different "engine" - a pneumatic ram filled with inert nitrogen. This is Gas Ram Technology.



Gas Ram Technology

The GRT Lightning XL SE is powered by a gas ram filled with pressurised nitrogen for consistent power.



Smooth Action Trigger

Newly designed two-stage operates with minimal pressure.



All new Stocks



GRT Lightning XL SE

Overall Length	95cm / 37.5in
Barrel Length	37cm / 14.5in
Weight	3kg / 6.6lb



GRT Lightning XL SE Black

Overall Length	95cm / 37.5in
Barrel Length	37cm / 14.5in
Weight	3kg / 6.6lb



GRT Lightning SE

Overall Length	95cm / 37.5in
Barrel Length	37cm / 14.5in
Weight	3kg / 6.6lb

The GRT Range

serious about **SPRINGERS**

During development every model in the BSA spring gun range is put through a punishing and prolonged firing test to ensure a lifetime of trouble free use. At the end of the test the gun is subjected to an exacting visual and technical inspection to evaluate the effect of prolonged firing, only if it passes will it be deemed worthy of bearing the BSA name and world famous Piled Arms logo. Which is why when you buy a BSA you know you have a gun which will keep on doing what it was designed to do, again and again and again.



Full power action

Internally weighted and powered by a high performance mainspring. Each action is calibrated to deliver top performance.



Smooth Action Trigger

Newly designed two-stage operates with minimal pressure.



Lightning XL SE Beech

Overall Length	95cm / 37.5in
Barrel Length	37cm / 14.5in
Weight	3kg / 6.6lb



Lightning XL SE Black

Overall Length	95cm / 37.5in
Barrel Length	37cm / 14.5in
Weight	3kg / 6.6lb



Lightning SE Beech

Overall Length	95cm / 37.5in
Barrel Length	37cm / 14.5in
Weight	3kg / 6.6lb



Meteor EVO Beech

Overall Length 109cm / 43in
Barrel Length 47cm / 18.5in
Weight 2.8kg / 6.2lb



Comet EVO Black

Overall Length 108cm / 42.5in
Barrel Length 45cm / 17.5in
Weight 2.7kg / 5.9lb



SuperSport SE Beech

Overall Length 104cm / 42in
Barrel Length 47cm / 18.5in
Weight 3kg / 6.6lb



Meteor EVO Silentium

with Silentium and Open Sights



Comet EVO Silentium

with Silentium and Open Sights

FULL POWER ACTION

The new SILENTIUM uses BSA's new combined Sound Reduction Technology. The silentium is BSA's latest and most technologically advanced noise reduction system to date, suppressing noise expansion up to 82%.



BSA Pellets

**Interceptor .177 or
.22 Hollow Point**
7.87gr or 15.43gr



**Elite .177 or .22 High
Crown Domed Head**
7.87gr or 15.43gr



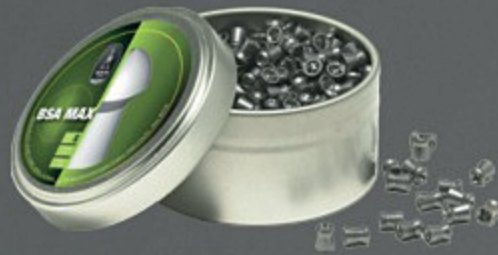
**Storm .177 or
.22 Pointed**
7.87gr or 15.43gr



Pylarm .25
18.82gr



MAX METAL .177 or .22
10.49gr or 21.75gr



FURY METAL .177 or .22
8.17gr or 18.50gr



TARGET METAL .177 or .22
8.17gr or 18.50gr



Bluestar .177 or .22

- Medium crowned dome shape
- Designed to provide maximum impact and optimum penetration
- Greater distances due to its heavier than standard weight
- Manufactured to the highest of tolerances
- Tighter shot groups
- Ideal for field target and hunting



Redstar .177 or .22

- Latest heavy weight pellets
- Aerodynamically designed to optimise accuracy
- Improved energy transfer at longer distances
- Combination of pointed and wad cutting style head
- Ideal for hunting and accurate competition shooting

Gun Safes

A gun safe must provide both total security for your guns, and peace of mind for you. The entire BSA range of gun safes provides both as standard, and that standard is the very highest available. Our safes are constructed from 2mm thick, rolled steel and the door secured via saw-resistant, rotating bolts. Vault-style, multi point, seven-letter locking is standard throughout the range, along with single key security and anti-crowbar interlocking hinges. All internal safe-boxes are fitted with six-lever cylinder locks and the finish of your guns is fully protected by a hi-density foam barrel retainer, shaped for side-by-side and over-under shotguns, or rifles.

Finished in super-tough, powder coated black complete with the BSA logo, our gun safes offer the ultimate security solution for your needs.

Model	Description	Dimensions	Weight
GS3	3 Gun	1300 x 200 x 200mm	21 Kg
GS4	4 Gun	1300 x 250 x 250mm	27 Kg
GS4LTD	4 Gun Lock Top Deep	1500 x 250 x 330mm	46 Kg
GS6LTD	6 Gun Lock Top Deep	1500 x 345 x 330mm	53 Kg
GS8LTD	8 Gun Lock Top Deep	1500 x 458 x 330mm	68 Kg



Vault Style

Anti-saw retaining bolts.



Single Key Access

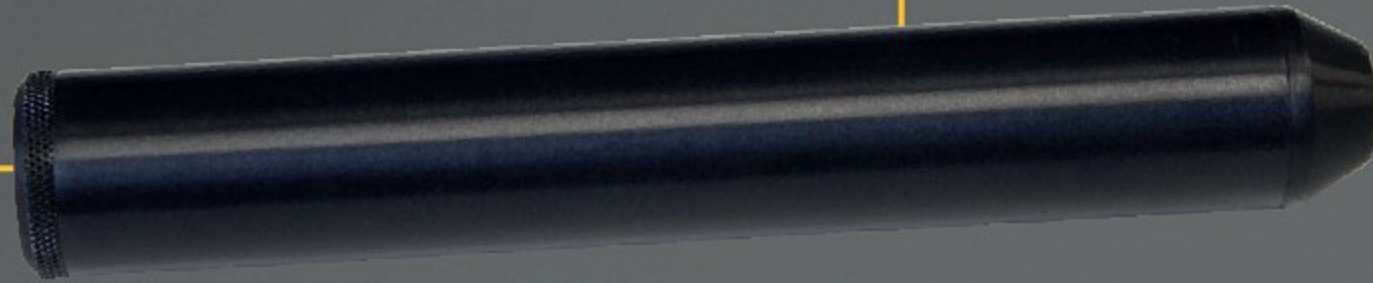
Via offset seven lever, twin-faced security key



BSA Silencers

VC Silencer

The only airgun silencer you will ever need. This latest-generation silencer actually allows the shooter to match its internal specification to suit the calibre of the rifle. A supplied hex-wrench permits the adjustment of the internal 'bore' of the silencer, so that the exit aperture can be increased or decreased, according to the calibre, to maximise the reduction in noise-energy as the pellet leaves the moderator. This 'variable choke' facility turns a silencer into one of the most useful accessories of all time.



R10MK1 and MK2 VC Silencer

The R-10 VC silencer has the same internal arrangement as the standard VC version, but the breech end of it has an outside diameter that is the same as the shroud on the R-10 so it mates perfectly when attached to the gun.



Filling Pump

This superbly engineered, multistage compression, air pump is manufactured on behalf of BSA by Hills, the acknowledged masters of the manual charging system. Totally portable and includes an internal moisture trap, the BSA pump can also be fitted with an optional Dri-Pac moisture fitter. The BSA Pump takedown design makes it easily transportable and gives your recharged airgun total go-anywhere versatility!



Aluminium Buddy Bottle - 200cc



Gun Bags



Black and Grey lined Gunbag
120cm / 47"



Black Tactical Case Mat
122cm / 48" extending to 70"



BSA Gun Sock





Black Tactical Carbine Backpack
98cm / 38"



Green Polytwill with Pocket
125cm / 49.5"



Black Tactical Carbine Backpack
110cm / 43"



Green Polytwill with Pocket
112cm / 44"

BSA Magazines



Singleshot Magazine

A flip-out adaptor in .177 or .22 for competition shooting is available separately. This product can be used in all BSA multi-shot models except for the SuperTen.

Multishot Magazine

.177 and .22 magazine now with last shot indicator.

We are delighted to introduce our new synthetic multishot magazine; a development that represents a significant improvement to our range of multishot rifles. The new magazine has a totally self-contained indexing system, which simplifies both the operation and how the gun works.

Instead of the magazine indexing being linked to the trigger pull, it is now completely enclosed within the magazine so that the rotor automatically rotates one chamber as soon as the bolt is pulled back. This has a number of advantages; it improves reliability, enhances trigger function, and improves safety because the magazine always rotates to the last empty chamber in the rotor so if you cannot see a pellet the chamber is empty.

This new style magazine works in all BSA multishot models and can even be used in all earlier models that would originally have used the old style magazines. The rotors are colour coded for calibre, blue for 4.5mm, red for 5.5mm and black for 6.35mm. They are knurled making them easy to rotate even if your hands are cold or when wearing gloves, and each chamber is numbered so you can see at a glance how many shots you have left and it now includes a last shot indicator.



BSA Accessories

ACCESSORIES

'O' Ring- New improved polyurethane- For use on buddy bottle 'o' rings
Molycote Grease for SuperTEN- For use on buddy bottle 'o' rings
Sling Swivel Kit 2 Each QD Studs & Quick release swivels
Bottle Holster 200cc Black Webbing
Buddy Bottle Filling Adaptor
1/8" BSP Male to 1/4" BSP Female
Buddy Bottle Filling Adaptor- For use with scuba tank & "MA" Clamp
Replacement Seal for 16-6168
Filling Adaptor for Hornet, Ultra Scorpion & H/F(High fill) Spitfire & Firebird
Filling Adaptor for S/F (Standard Fill) Spitfire & Firebird
Replacement Dry Pac Granules
Dry-Pac Moisture Extraction System Filter Kit & Granules
BSA Pump (no dry pack)
Replacement Air Filter Kit for BSA Pump
MK3 Pump & Drypac inc. Filter Kit
Limited Edition BSA 150 year Anniversary 'Woodpigeon' Hand made knife
Rifle sling

TARGETS

BSA Paper Targets
BSA Rabbit Field Target with 4x Bullseye Rings
BSA Crow Field Target

SCOPEMASTER PROFESSIONAL SCOPE MOUNTS

1 Piece Non Adjustable Medium 1", 9.3-13mm Dovetail
1 Piece Non Adjustable Medium 1", 10.5-11.9mm Gamo
1 Piece Non Adjustable Medium 1", 11.9-12.9mm S-10
1 Piece Non Adjustable Medium 1", 12.9-14mm Maxigrip
2 Piece Double Screw Medium 1" 9.3-13mm Dovetail
2 Piece Double Screw High 1" 9.3-13mm Dovetail
2 Piece Double Screw Medium 30mm 9.3-13mm Dovetail
2 Piece Double Screw High 30mm 9.3-13mm Dovetail

Vast range of BSA Scopes available.



If you're looking for quality optical equipment, visit our website.