

**PLEASE READ MANUAL IT WILL ALLOW YOU TO ENJOY YOUR POWERBOARD MORE**



**OWNER'S  
MANUAL**

***ALWAYS WEAR A HELMET!  
PLEASE BE SAFE WHEN RIDING!!!***



# **TABLE OF CONTENTS:**

## **Description**

### **A. Table of Contents**

### **B. Important!!!**

### **C. Safety**

---

### **D. Getting to Know YOUR Powerboard**

### **E. Package Contents**

### **F. Getting Started**

### **G. Folding and Storage**

---

### **H. Operating Procedures**

### **I. Fuel Mixture Table**

### **J. Maintenance**

Recommended Tools

Carburettor Adjustments

Braking System

Tyres and Wheels

Adjusting the Head Unit

Adjusting the Belt and Chain

Maintenance Schedule

### **K. Installing a Seat**

### **L. Other Questions**

## **B. IMPORTANT!!!**

### **PLEASE READ THIS FIRST BEFORE OPERATING THIS PRODUCT**

#### **WHERE TO USE POWERBOARD:**

This product does not conform to Local Motor Vehicle Standards and is not intended for operation on public streets, roads or highways. Serious injury can result from the unsafe operations of this vehicle. Operators can minimize these risks by using certain safety equipment such as: safety helmet, goggles, gloves, elbow and kneepads and appropriate footwear.

#### **HOW TO USE THIS PRODUCT:**

DO NOT operate this product in traffic, on wet, frozen oily or unpaved surfaces or under the influence of drugs and/or alcohol. Avoid uneven surfaces, potholes, surface cracks and obstacles. This product is designed for paved or tared smooth flat surfaces. BE CAREFUL when riding this product in the rain or in wet conditions.

#### **CHECKS:**

It is the customer's responsibility to check all nuts and bolts (as per box) and ensure that the product is in a safe roadworthy condition at all times.

#### **WARNING!**

- Never let a child or inexperienced person operate this product!
- Never start the engine inside a closed room or building. Breathing exhaust fumes can be fatal.
- This product should not be used by persons without excellent vision, balance, co-ordination, reflex, muscle and bone strength and good decision-making capabilities.
- This product should not be used by minors without adult supervision.
- This product should not be used by persons unwilling or unable to take responsibility for their own actions.
- The user of this product assumes ALL risks associated with its use. To minimize these RISKS, the user must wear safety helmet, goggles, gloves, elbow and kneepads and appropriate footwear.

## C. SAFETY

### Fuel Safety

- Mix and pour fuel outdoors away from sparks or flames.
- Use only a container approved for fuel.
- Do not smoke or allow smoking near the Powerboard while working on the engine, or while the engine is running.
- Wipe up and clean all fuel spills before starting the engine.
- Move at least 10 metres away from where you fuelled before starting the engine.
- Stop engine before removing the fuel cap.
- It is recommended that you empty the fuel tank prior to shipping or storage to prevent fuel leaks.
- Do not store your Powerboard near open flames, furnaces, electric motors or switches.

### Maintenance Safety

- Maintaining your Powerboard is recommended in this Owner's Manual.
- Disconnect the spark plug cap before performing any engine maintenance, except for carburettor adjustments.
- Keep others away while making carburettor adjustments.
- Use only quality replacement parts as recommended by the manufacturer.

### Transportation and Storage

- Carry your Powerboard by the handlebar tube with the engine turned off and the muffler away from your body.
- Allow the engine to cool, empty the fuel tank and fold the Powerboard before carrying or storage.
- It is recommended that you empty the fuel tank prior to shipping or storage to prevent fuel leaks.
- Clean the Powerboard carefully and store in a cool, dry place.

### Product Safety

- Keep hands and feet away from moving parts.
- Inspect the entire product prior to each use. Replace damaged parts. Check for fuel leaks and make sure all fasteners are in place and securely fastened.
- Replace all parts that are cracked, chipped or damaged before use.
- Use only parts and accessories that are recommended by the manufacturer.

***If a situation arises that is not covered in this manual,  
proceed with caution and use good judgement.***

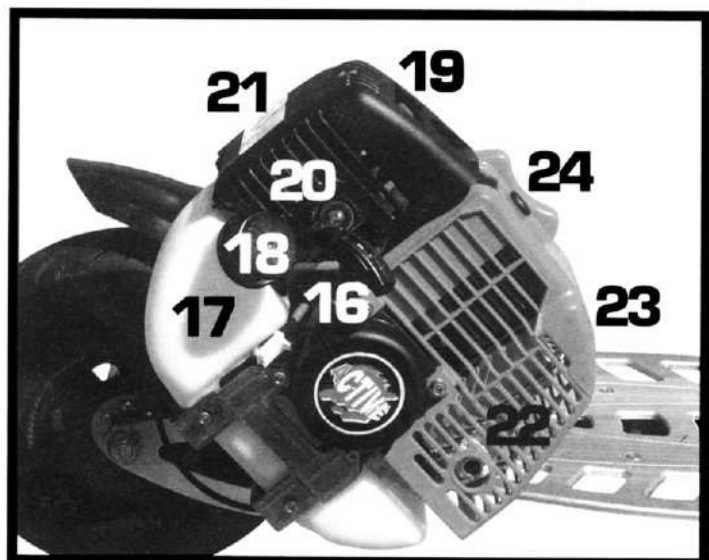
**Contact your Powerboard Dealer if you need further assistance.**

## D. GETTING TO KNOW YOUR POWERBOARD

1. Gas Lever
2. Front Brake Lever
3. Rear Brake Lever
4. Gearshift
5. Front Disc Brake
6. 2-Stroke Engine
7. Folding Handle
8. Kickstand
9. Head Unit
10. Deck
11. Brake Calliper
12. Rear Disc Brake
13. Choke
14. Belt Cover and Mud Guard
15. Handlebar Tube



16. Recoil Starter
17. Gas Tank
18. Gas Cap
19. Choke Lever
20. Carburettor
21. Carburettor Cover
22. Muffler
23. Muffler Cover
24. Spark Plug



## E. PACKAGE CONTENTS

Your Powerboard comes with the following items in the box.

Please locate all of the following:

1. The Powerboard
  2. Allen Wrench
  3. Owner's Manual
  4. Seat Post and Mounting Bracket
  5. Seat
- } Depending on Model

## F. GETTING STARTED

*Please read and understand these instructions and the OPERATING PROCEDURES section, prior to starting or riding your Powerboard!*

### Unfolding

Fig. 1

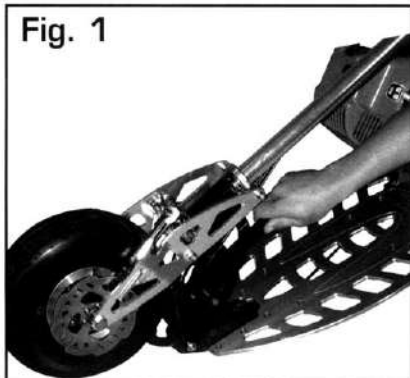


Fig. 2

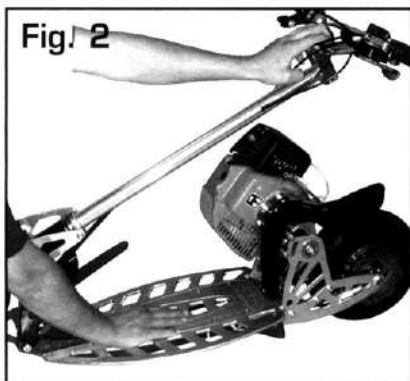
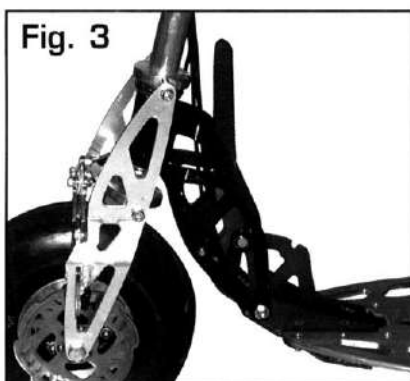


Fig. 3



1. Carefully remove the Powerboard from the box.
2. To unfold the Powerboard, begin by pressing down on the FOLDING HANDLE with one hand (Fig. 1), while gently pulling up on the handlebar post with the other (Fig. 2).
3. Fully extend the handlebar post to the upright position until you feel the mechanism lock into place (Fig. 3).
4. Detach the handlebar from the post and mount the handlebar onto the post using the 4 bolts provided. Ensure the handlebars are in the centre.
5. Adjust the Gas and Brake Levers using the provided Allen Wrench, loosen the tension bolt and adjust the levers to a comfortable position (Fig4).  
**\*BE CAREFUL NOT TO PULL ON THE CABLES!!!**

#### Fuelling

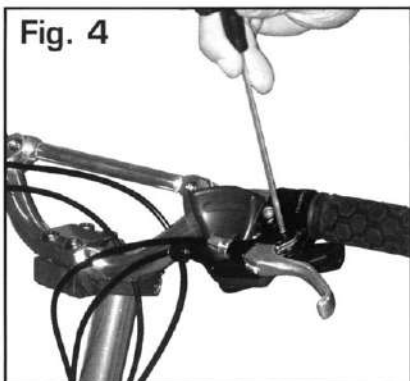
*This is a 2-stroke engine. Always run the engine using fuel, which is mixed with 2-cycle engine oil.*

**PLEASE READ OPERATING PROCEDURES BEFORE FUELLING!!**

6. Mix fuel (unleaded) and 2-cycle engine oil in separate container. Use between 40:1 and 60:1 oil mixture ratio depending on quality of fuel in your area. (Refer to Fuel Guide on page 8). Make sure the fuel is well mixed by shaking the container.
7. Make sure that the engine is off!
8. Slowly open the GAS CAP, so that possible over-pressure disappears.



Fig. 4

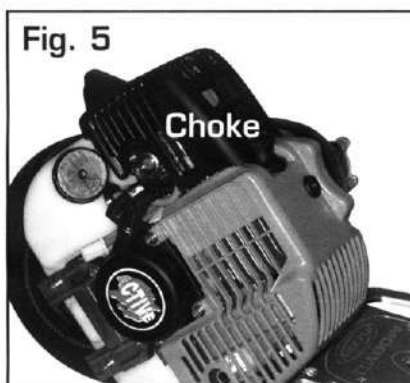


9. Clean the tank cap area to make sure that it is free from excess dirt and debris.  
\* **Make sure that no dirt falls into the gas tank!**
10. Pour pre-mixed Gas/Oil mixture into the GAS TANK. Tank capacity is 0.9 litres.  
\* **Do not overfill.**
11. After fuelling, replace the GAS CAP and tighten.

### Starting

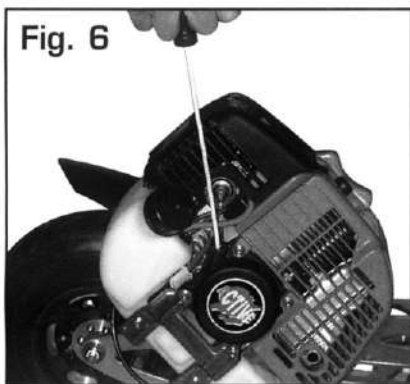
**Move at least 10 metres away from where you filled up with gas!!!**

Fig. 5



12. Set the CHOKE LEVER to the CHOKED (UP) position (Fig. 5).
13. Pull the RECOIL STARTER briskly, making sure to hold the handle in your grasp. (Fig 6).  
\* **Note: Do not allow it to snap back, let it back slowly!**
14. Only use the choke system when the engine is cold, make sure NOT to pull the gas lever when pulling the pullstart. When starting a warm engine, do NOT use the choke system, but gently squeeze the gas lever.

Fig. 6



**When starting the Powerboard for the first time, it may be necessary to pull the starter handle 15-20 times until it starts.**

This is because the gas needs to cycle into the engine.

15. Once the engine has started, quickly move the CHOKE LEVER into the RUN (DOWN) position. (Fig. 5).
16. After the engine is started, let it warm up for 2-3 minutes before riding.

**IF THE MOTOR KEEPS STALLING AT IDLE SPEED, IT MAY BE NECESSARY TO ADJUST THE IDLE SPEED ON THE CARBURETTOR.**

Please refer to **Carburettor Adjustment** in the Maintenance Section on Page 12 for Instructions on how to adjust idle speed.

Fig. 7

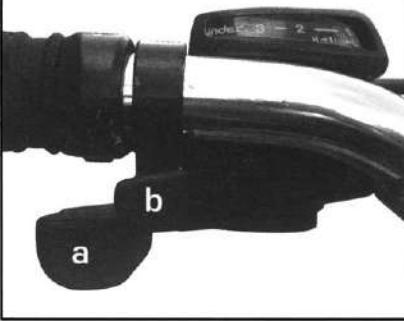
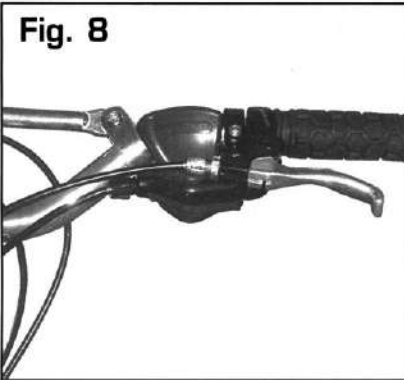


Fig. 8



17. Make sure that all of the exposed bolts and screws are tightened.
18. Raise the kickstand to its upright position.
19. Make sure the engine is running.
20. Put one foot on the deck of the Powerboard. While pushing off with the other foot, gently depress the GAS LEVER, on the right side of the handlebars. The Powerboard will begin to move on its own.
21. Control your speed by pressing and releasing the accelerator lever. The harder you squeeze, the faster you will go.

#### Changing Gears

22. As max rpm is achieved, second gear can be selected by pressing (a). To return to first gear, press (b) (Fig. 7).

#### Braking

23. To brake, release the GAS LEVER and gently press either BRAKE LEVERS (Fig. 8).

## G. FOLDING AND STORAGE

When you are done riding the Powerboard you can fold it down for compact storage, carrying and transportation. To fold down the Powerboard, use one hand to push down on the folding handle while gently pushing down on the handlebars.

**BE CAREFUL NOT TO HIT YOUR HEAD WITH THE HANDLEBARS!**

Push down until you feel the mechanism lock into down position.

- **NOTE:** If the lever is pulled aggressively, the locking spring may become stretched and then the steering will not lock into position, it is also advisable to ensure scooter locks firmly, prior to riding.

You can now carry the Powerboard by the handlebar tube.

## H. OPERATING PROCEDURES

### FUEL

#### WARNING!

- This is a 2-stroke engine. Only run the engine on fuel, which is properly mixed with 2-cycle engine oil.
- Provide good ventilation when fuelling or handling fuel.
- Always use gas with a minimum octane number of 95 unleaded.



- Use Active 2-stroke oil only (for Warranty Purposes).  
Mix 40:1 (Non-Synthetic oil) or 60:1 (Synthetic oil) (or 3%), gas:oil mixture.
- Never use multi-grade (1 OW/30) or waste oil.
- Always mix fuel and oil in a separate clean, gas safe container. Always start by adding half the amount of fuel, which is to be used. Then add the whole amount of 2-cycle oil. Mix (shake) the fuel container. Add the remaining amount of fuel. Mix (shake) the fuel oil thoroughly before filling the fuel tank.

**Fuel : Oil Table**

Litres of Leaded Petrol	Oil Ratio (ml of oil)				
	POOR QUALITY OIL			BEST QUALITY OIL	
	20:1	30:1	40:1	50:1	60:1
20 litres	1 litre	660ml	500ml	400ml	330ml
15 litres	750ml	500ml	370ml	300ml	250ml
10 litres	500ml	330ml	250ml	200ml	160ml
5 litres	250ml	160ml	125ml	100ml	80ml
1 litre	50ml	30ml	25ml	20ml	16ml

- \* Recommended with Good Quality 2-Stroke Oil i.e. TTS  
 \*\* Recommended with Fully Synthetic 2/5 Oil i.e. Motul 800 2T  
 \*\*\* Use only Active Fully Synthetic Oil

## Fuelling

### WARNING!

- Always shut the engine off before refuelling.
- Slowly open the fuel tank, so that possible over-pressure disappears.
- Before fuelling, clean the tank cap area carefully, to insure that no dirt falls into the tank. Make sure that the fuel is well mixed by shaking the container.
- Tighten the fuel cap carefully, after fuelling.
- Always move the unit at least 2 meters from the fuelling area before starting.

## Starting

- Set the CHOKE LEVER to the CHOKED (UP) position.
- Pull the recoil starter handle briskly, making sure to keep the handle in your grasp, and not allowing it to snap back.
- Once the engine is running, move the CHOKE LEVER to the RUN (Down) position.

### NOTE!

At this stage, if the engine does not start, repeat the starting procedure.

- After starting the engine, allow the engine 2-3 minutes to warm up prior to riding.

## Stopping

- Gradually decrease the engine speed to an idle speed and press the kill-switch on the handlebar tube.

## J. MAINTENANCE

### RECOMMENDED TOOLS

To adjust and service the Powerboard you will need the following tools:

- **Allen Keys:** 3/4/5/6mm
- **Wrenches:** 10/13/17mm - Open and Ring Combination
- **Short Reach Spark Plug Socket**
- **Water Pump Plier**
- **Philips Head Screwdrivers**
- **Oil, Grease or Lubricant**
- **Powerboard Toolkit is also available!!**

### CARBURETTOR ADJUSTMENT

#### **WARNING!**


*Never start the engine without the complete clutch cover assembled!  
 Otherwise the clutch can come loose and cause personal injuries.*

In the Carburettor, fuel is mixed with air. When the engine is test run at the factory, the Carburettor is basically adjusted. A further adjustment may be required from time to time, depending on climate and altitude.

**The Carburettor has only one possible adjustment (Tanaka Engine Only):  
 T=idle speed adjustment screw**

#### **Idle Speed Adjustment (Fig. 9)**

When the idle speed is adjusted properly, the engine will run smoothly, without pressing the GAS LEVER.

<p><b>Fig. 9</b></p> 	<p><b>If adjustment is required:</b></p> <ol style="list-style-type: none"> <li>1. Start the engine.</li> <li>2. Using a long, Philips head screwdriver gently close (clockwise) the T-screw (Fig. 9) until the Powerboard starts to move forward.</li> <li>3. Then open (counter-clockwise) the screw until the Powerboard stops.</li> <li>4. You have reached the correct idle speed when the engine runs smoothly below the RPM when the Powerboard starts to move.</li> </ol>
--	---

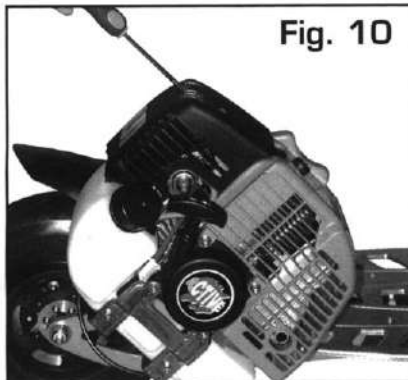
## **WARNING!**

When the engine is idling, under **NO CIRCUMSTANCES** should your Powerboard be moving!!!

*If the Powerboard continues to move after idle speed adjustment, contact your local Powerboard Service Centre.*

## **Cleaning the Air Filter**

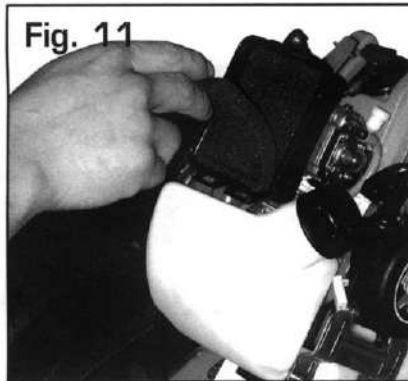
It is a good idea to occasionally clean the air filter to ensure optimum performance. (Removal or Replacement of Airfilter with other than original will automatically void warranty).



**Fig. 10**

### **To clean the Air Filter:**

1. Using a Philips head screwdriver, remove the carburettor cover by turning the cover screw counter clockwise. (Fig. 10).
2. Remove and clean the air filter (the spongy material on top of the air intake) by washing the sponge with soap. (Fig. 11).
3. Rub the filter with some oil and place the air filter back into its original position and replace the cover.



**Fig. 11**

## **BRAKING SYSTEM**

The Powerboard uses both a floating front wheel disc/calliper system activated by a hand lever on the handlebar. Familiarize yourself with the braking system before use. The front brake is activated by squeezing the BRAKE LEVER with your left hand. Make sure to release the GAS LEVER when engaging the brakes.

Practise braking on a smooth, dry surface to get used to the feel of the braking system. Braking distance is affected by wet conditions and loose and uneven riding surfaces.

## **Adjusting the Brakes**

The brakes on the Powerboard should come fully adjusted from the factory. However, it is important to adjust the brake from time to time.

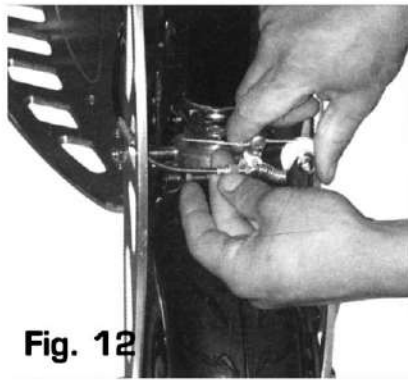


Fig. 12

**To adjust the brakes:**

1. With one hand, depress the brake calliper using your thumb and forefinger. (Fig. 12).
2. With the other hand, loosen the locknut of the tension screw on the brake line.
3. Turn the tension screw counter clockwise to tighten the brake.
4. Tighten cable freeplay until the front wheel stops turning freely and turn tension screw clockwise a quarter turn. The front wheel should turn freely now.
5. Turn the locknut clockwise on the tension screw to secure the tension screw. (DO NOT turn the tension screw!)

**Squeaky Brakes**

The brakes may squeak before they are driven in. This is normal and will not affect the function or performance of the brakes. With continued use, the squeak should go away.

**TYRES AND WHEELS**

The EVO 2 Powerboard uses an identical rim and tyre assembly on the front and rear wheels, which means that the tyres can be rotated. The wheels are actually two wheel halves (split rim) bolted together to make it easier to remove and replace the tyre and tube.

***Always make sure that the tyre is deflated before opening the bolts.***

The rear wheel is fitted with a special spacer to accommodate the belt pulleys, while the front wheel has a bracket for the disc brake.

Tyre wear will differ based on rider weight, riding conditions and care. Replacement tyres can be obtained at your local Powerboard Dealer.

**Tyre Pressure**

The tyre must be inflated to a maximum of 2.5 Bar. It is also recommended to use a tube additive like Slime purchasable from any motorcycle shop, to avoid inconvenient punctures. Empty all air from the tyre, prior to loosening the bolt to split the rim.

**ADJUSTING THE HEAD UNIT - (STEERING TUBE)**

The head unit should come adjusted from the factory. However, riding on rough terrain and general use may cause the head unit to become loose over time. It may be necessary to adjust the head unit from time to time.

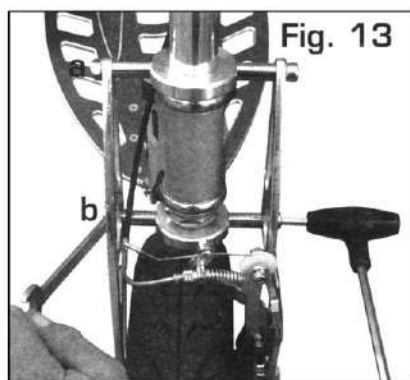


Fig. 13

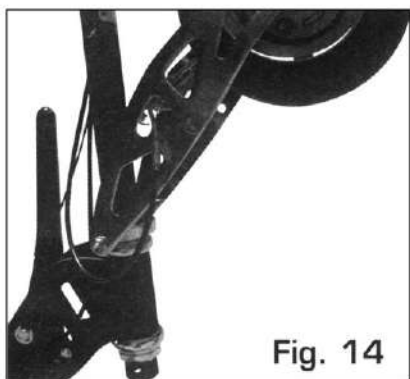


Fig. 14

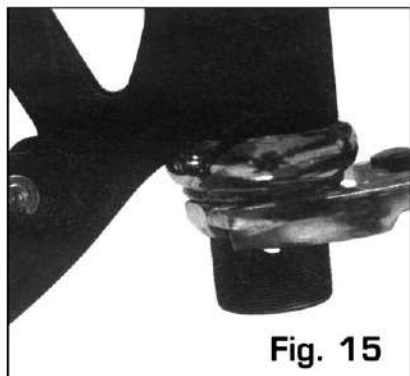


Fig. 15

#### To adjust the head unit:

1. Loosen (a) and Remove the long bolt (b) shown on Fig. 13.
2. Rotate the complete front wheel and fork assembly upwards so that the large bearing lock nuts are accessible (Fig. 14).
3. Using 2 large adjustable wrenches, loosen both nuts (Fig. 15).
4. Tighten the nut closest to the bearing to the desired tightness. The handlebar should still be able to turn freely however with no backwards and forwards freeplay.
5. Then securing the 1st nut, tighten the 2nd nut against the first insuring it is locked securely.
6. Lower complete wheel and fork assembly and place bolt and bushes in same order as disassembly.
7. Ensure that top and bottom bolts are tightened.

\* **NB!! DO NOT OVER TIGHTEN OR IT WILL DAMAGE THE BEARINGS!!**

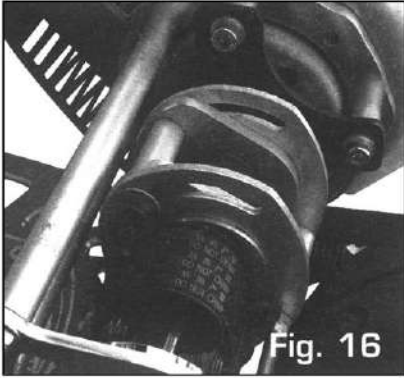
\* **DO NOT CONTINUE TO USE PRODUCT IF THERE IS TOO MUCH FREE PLAY AS THIS WILL DAMAGE THE BEARINGS!!!**

### ADJUSTING THE BELTS

The belts will come adjusted from the factory. However, it may be necessary to adjust the pulleys from time to time. The belts must be well aligned onto the pulleys otherwise they may start to rub and chafe, which will result in shortened belt life.

#### How tight should the belt be?

- If the belt is skipping or jumping on the pulley teeth, this is too loose and may be harmful.
- If the belt is making a humming sound when the wheel is turning, this is too tight and may cause the belt to snap.
- The correct tension is achieved by adjusting the belt from its loose position to when it becomes lightly tense.

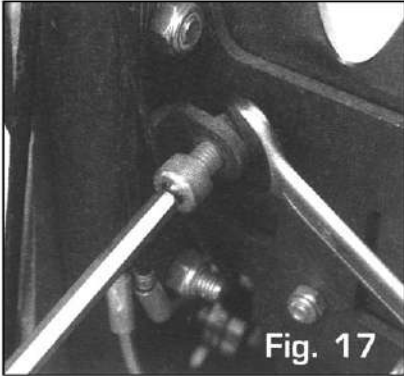


**To tighten the belts:**

1. Remove the rear mud guard.
2. Rotate the rear wheel to assess the alignment of the belts.

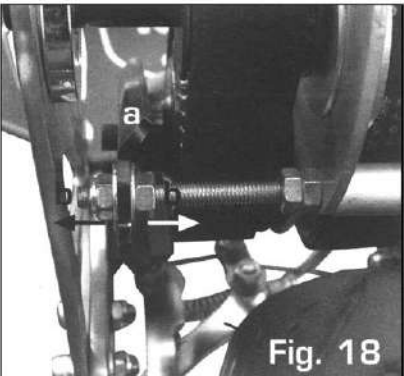
**Adjust the Two Primary Belts First:**

3. Loosen the tensioned lock nut on the cam slotted plate (Fig. 16).
4. Rotate the bush until the correct tension is achieved, making sure to turn the wheel in direction of use to ensure bush is correctly seated and aligned. Both belts are adjusted at the same time. Tighten bolt again ensuring position of bush is maintained.



**Adjust the Large Belt Now:**

5. Turn the Powerboard onto its left side.
6. With both spanner and allen key, adjust the tension (Fig. 17).
7. Ensure that the lock nut is securely fastened against the plate. If this is not done correctly, the belt will loosen immediately and there is a possibility of losing the tension bolt.



**To adjust freeplay of Gear Selector:**

1. The gear selector mechanism uses the same system to adjust as the front and rear brakes.
2. Correct tension is achieved when gear selector is in First Gear, the powerboard should free wheel backwards. When the powerboard is in Second Gear, it should not be able to free wheel backwards.
3. It is critical to ensure that when Second Gear is selected (Fig. 18) that the clutch arm pressure plate (a) is 90° to the gearbox. This can be adjusted by (b). Ensure that the nuts are securely fastened.

\* **NB!! FAILURE TO DO THE ABOVE WILL RESULT IN BEARING FAILURE!!!**



## MAINTENANCE SCHEDULE

Proper care of your Powerboard will ensure optimal performance and longer life span. The following are a few maintenance suggestions that will keep your Powerboard running in top condition:

### Daily Maintenance

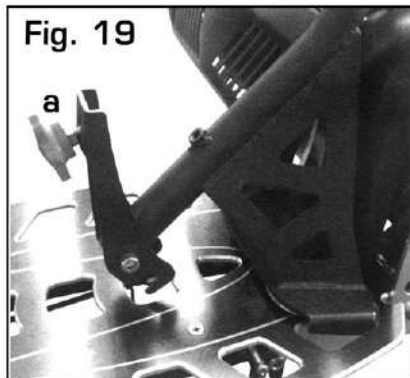
Perform each time you ride your Powerboard.

- Clean the exterior of the unit with a soft, damp rag.
- Check that all nuts and bolts are securely tightened.

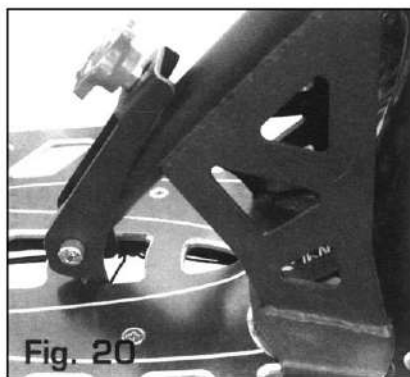
### Weekly/Monthly Maintenance

- Check the starter, especially the cord and return spring.
- Clean the exterior of the spark plug.
- Remove the spark plug and check the electrode gap. Adjust it to 0.6mm or change the spark plug.
- Clean the cooling fins on the cylinder head and check that the air intake at the starter is not clogged.
- Clean the air filter.
- Check the tyres and brakes .

## K. INSTALLING A SEAT



1. Simply loosen the tension bolt (a) completely.
2. Slot the base of the triangular part (Fig. 19) into the two outer rear cut outs on the aluminium deck.
3. Pull the lever upwards (Fig. 20), making sure that it hooks into the aluminium deck.



## Carburetor adjustment instructions

You will need the orange handled pacman tool to turn the fuel mixture screw.

Start the bike, put the choke lever down and let it warm up.

Then hold the rear wheel off the ground and hold it wide open.

Have a second person start to turn this screw outward. Then the engine will start to slow down and run boggy.

Then slowly start to turn it inward. The engine will start to rev higher and higher. Once it reaches max rpm, stop turning it.

If you loose take of power, you can back the screw outward 1/4 of a turn.

This adjustment will need to be done again after the engine breaks-in and if you install the performance muffler or if there is a big change in outside temperature.

Primer Bulb - Push at least 6 times before starting.

Choke Lever - Up when starting, down when riding.





# PARTS MANUAL



# **TABLE OF CONTENTS:**

## **Description**

**Table of Contents**

**A1. Bodyset**

**B1. Front Wheel Set**

**B3. Rear Wheel Set**

**C2. Gearbox Set**

**D1. Brake Set**

**E1. Handle Bar Set**

**F1. Front Fork with Steering Set**

**G1. Assembly**

**G3. Decks**

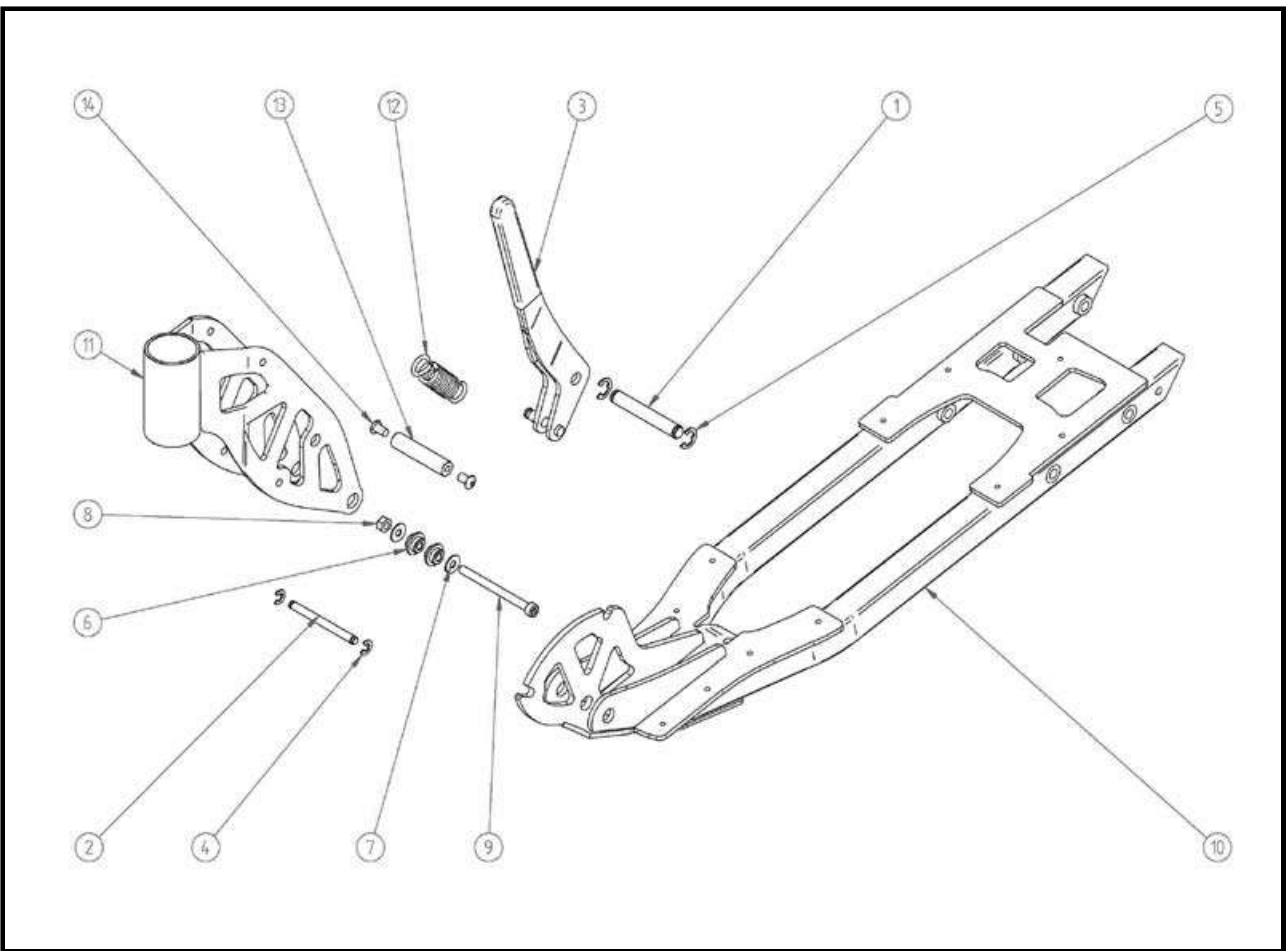
**G4. Rear Assembly**

**G5. Seat Assembly**

**H. 50cc Exploded Engine Parts**

**I. 40cc Exploded Engine Parts**

# A1. BODY SET

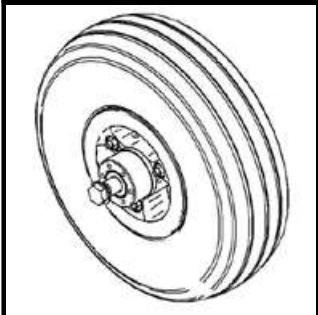
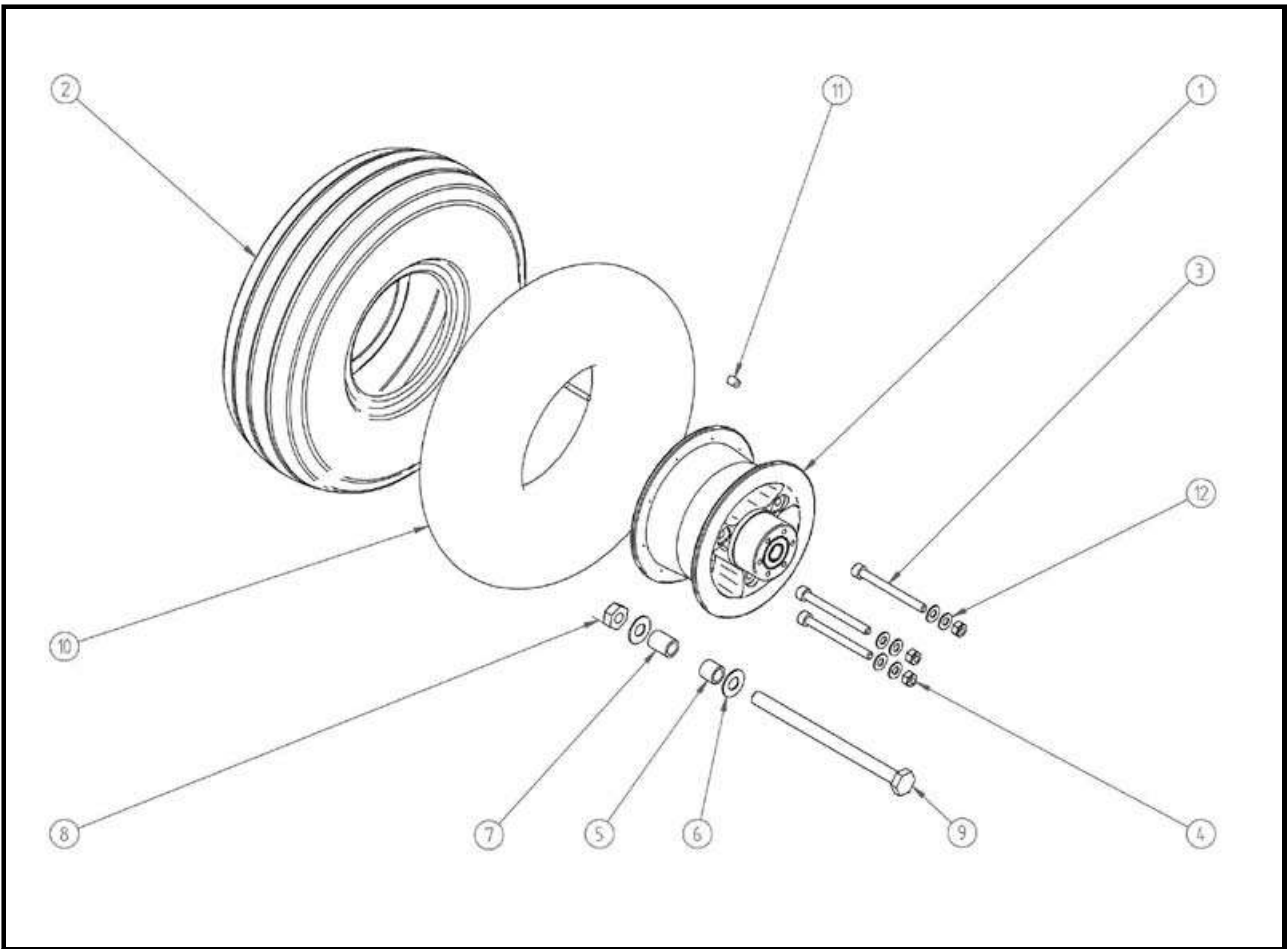


**A1. BODY SET**

No.	Code	Desc. Goods	Q'ty	DEALER Total Price/set	MSRP Total Price/Set
A1-1	3COPM0551A	OPEN LEVER FOLDING PIN	1		
A1-2	3EVO20522A	FRONT NECK FOLDING PIN	1		
A1-3	3COPM0540A	OPEN LEVER	1		
A1-4	3CORE0500A	FRONT NECK E RING	2		
A1-5	3CORE0900A	OPEN LEVER E RING	2		
A1-6	3EVO20521A	FRONT NECK PLATE WASHER	2		
A1-7	3EVO20521A	FRONT NECK PLATE BULTE WASHER	2		
A1-8	3CON06000A	FRONT NECK PLATE BULTS	1		
A1-9	3CO106075B	FRONT NECK PLATE BULTS	1		
A1-10	3EVO20530A	FRAME	1		
A1-11	3EVO20510A	SUPPORT TUBE	1		
A1-12	3COPM0552A	OPEN LEVER SPRING	1		
A1-13	3EVO20524A	FRONT NECK TOP SPACER	1		
A1-14	3CO206010A	M6 SPACER BOLT	2		



**B1. FRONT WHEEL SET**



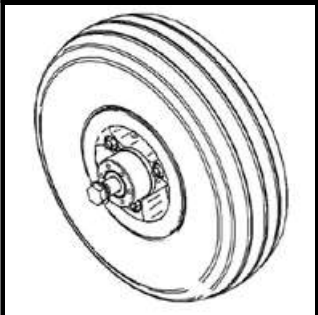
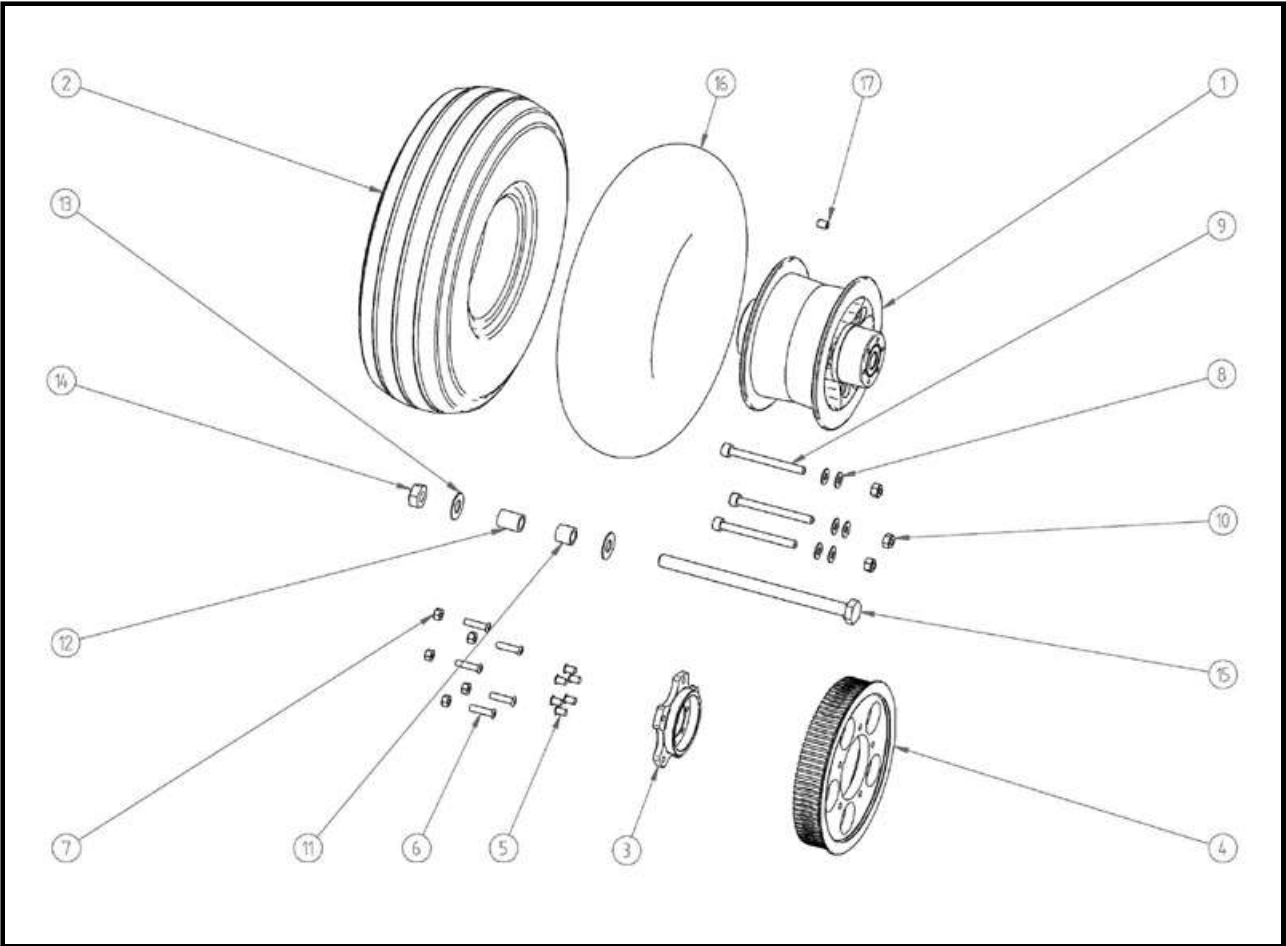
**COMPLETE FRONT WHEEL SET**

No.	Code	Desc. Goods	Q'ty	DEALER Total Price/set	MSRP Total Price/Set
B1-1	3EVO20410A	FRONT RIM	1		
B1-2	3COPM0406A	10" TIRE	1		
B1-3	3CO106055A	FRONT FOLDING BULTS	3		
B1-4	3CON06000A	SIDE PLATE ENG BOLT	3		
B1-5	3COPM0404B	L12.5 WHEEL SPACER	1		
B1-6	3CO510150C	FRONT WHEEL BULTE	2		
B1-7	3COPM0405A	L18 SPACER	1		
B1-8	3CON10000A	FRONT WHEEL BOLT	1		
B1-9	3CO510160A	FRONT WHEEL BULTS	1		
B1-10	3COPM0407A	10" INNER TIRE(Tube)	1		
B1-11	3COPM0408A	TIRE CAP	1		
B1-12	3COW13061A	M6 WASHER	6		



# B3. REAR WHEEL SET

**B3. REAR WHEEL SET**

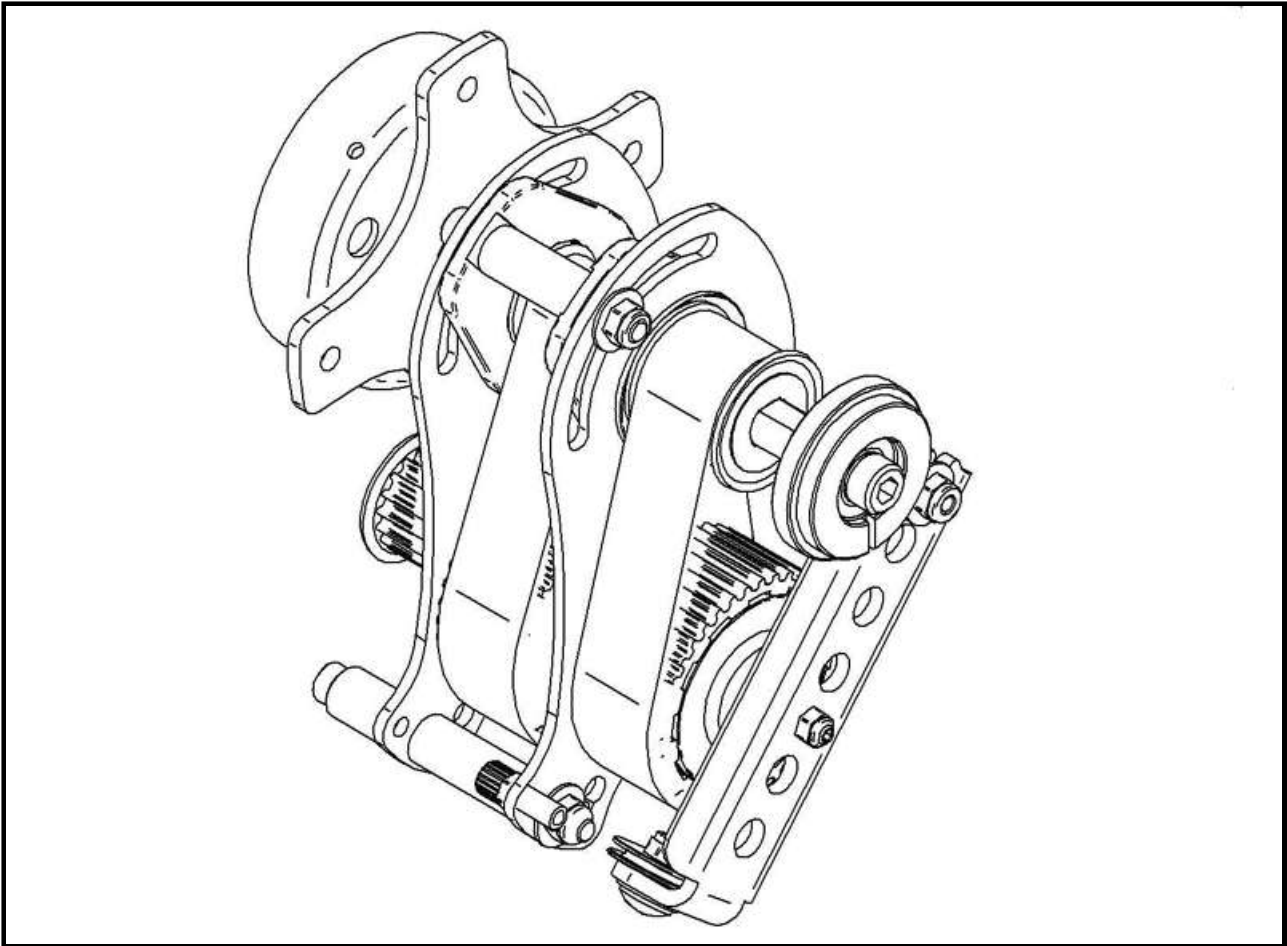


**COMPLETE REAR WHEEL SET**

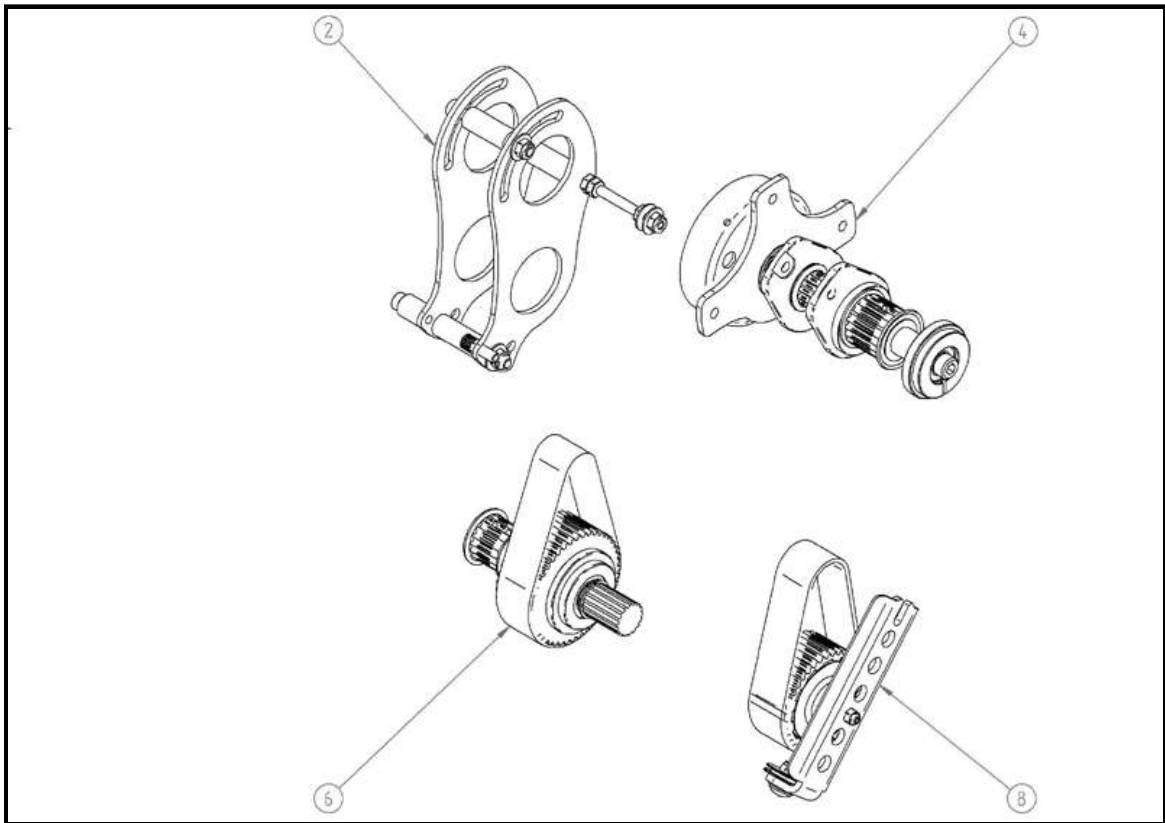
No.	Code	Desc. Goods	Q'ty	DEALER Total Price/set	MSRP Total Price/Set
B3-1	3EVO20810A	BACK RIM	1		
B3-2	3COPM0406A	10" TIRE	1		
B3-3	3EVO20821A	PULLEY WHEEL FLANGE	1		
B3-4	3EVO20820A	86T PULLEY WHEEL	1		
B3-5	3CO205012C	DISK BULTS	6		
B3-6	3CO206016A	BACK WHEEL BELT BOLTS	5		
B3-7	3CON06000A	BACK WHEEL BELT BOLT	5		
B3-8	3COW13061A	M6 WASHER	6		
B3-9	3CO106055A	FRONT FOLDING BULTS	3		
B3-10	3CON06000A	SIDE PLATE ENG BOLT	3		
B3-11	3COPM0404B	L12.5 WHEEL SPACER	1		
B3-12	3COPM0405A	L18 SPACER	1		
B3-13	3CO510150C	FRONT WHEEL BULTS	2		
B3-14	3CON10000A	BACK WHEEL BULT	1		
B3-15	3CO510165B	BACK WHEEL BULTS	1		
B3-16	3COPM0407A	10" INNER TIRE (Tube)	1		
B3-17	3COPM0408A	TIRE CAP	1		

# C2. GEAR BOX SET

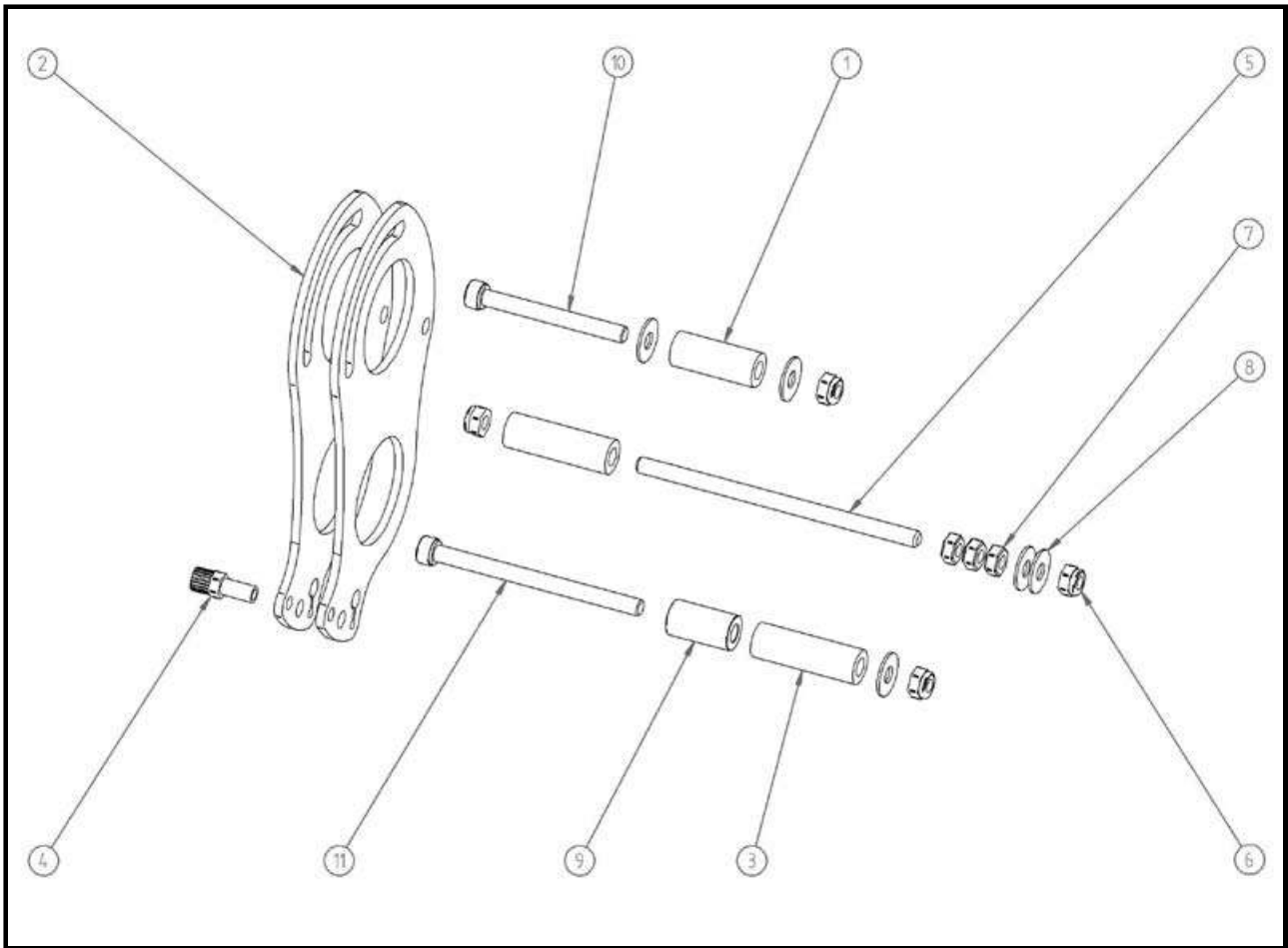
C2. GEAR BOX SET



No.	Code	Desc. Goods	Q'ty	DEALER Total Price/set	MSRP Total Price/Set
ASS-2-1	2EVO20700A	COMPLETE GEAR BOX			



## C2. GEAR BOX SET No.2

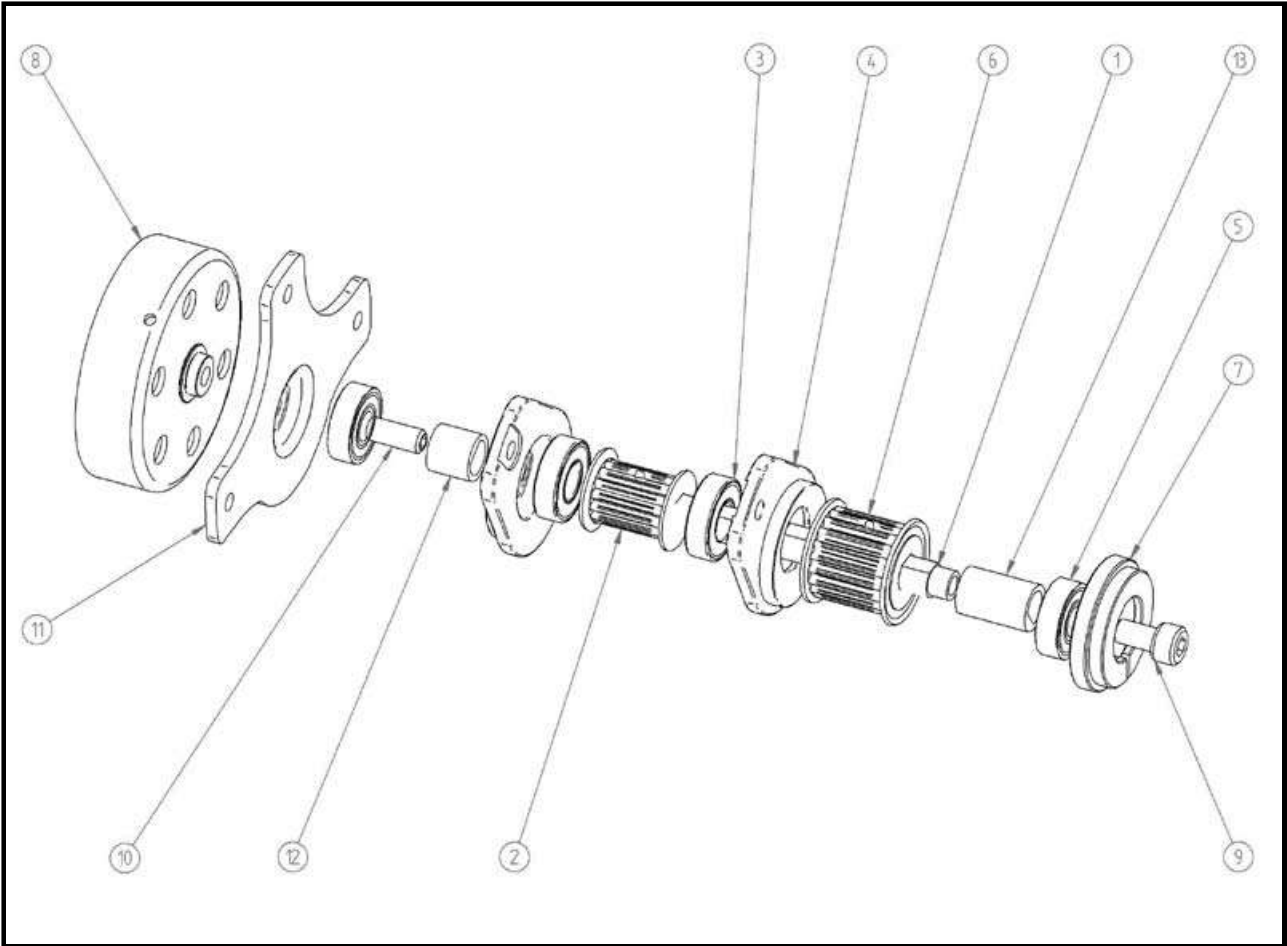


C2. GEAR BOX SET No.2

No.	Code	Desc. Goods	Q'ty	DEALER Total Price/set	MSRP Total Price/Set
C2-1	3EVO20708A	SPACER CAM	1		
C2-2	3EVO20701A	BELT ASS PLATE	2		
C2-3	3EVO20702A	SPACER	2		
C2-4	3COPM0308A	AOG NUT 1-1	1		
C2-5	3CO906110A	STUD	1		
C2-6	3CON06000A	STUD M6 BOLT (NYLON)	4		
C2-7	3CON06000B	STUD M6 BOLT	3		
C2-8	3COW16061A	GEAR BOX M6 WASHER	5		
C2-9	3COPM0791A	BELT TENSIONER BUSH	1		
C2-10	3CO106055A	BELT CAM SPACER BULTS	1		
C2-11	3CO106080A	TENSIONER BUSH BULTS	1		

# C4. GEAR BOX SET No.4

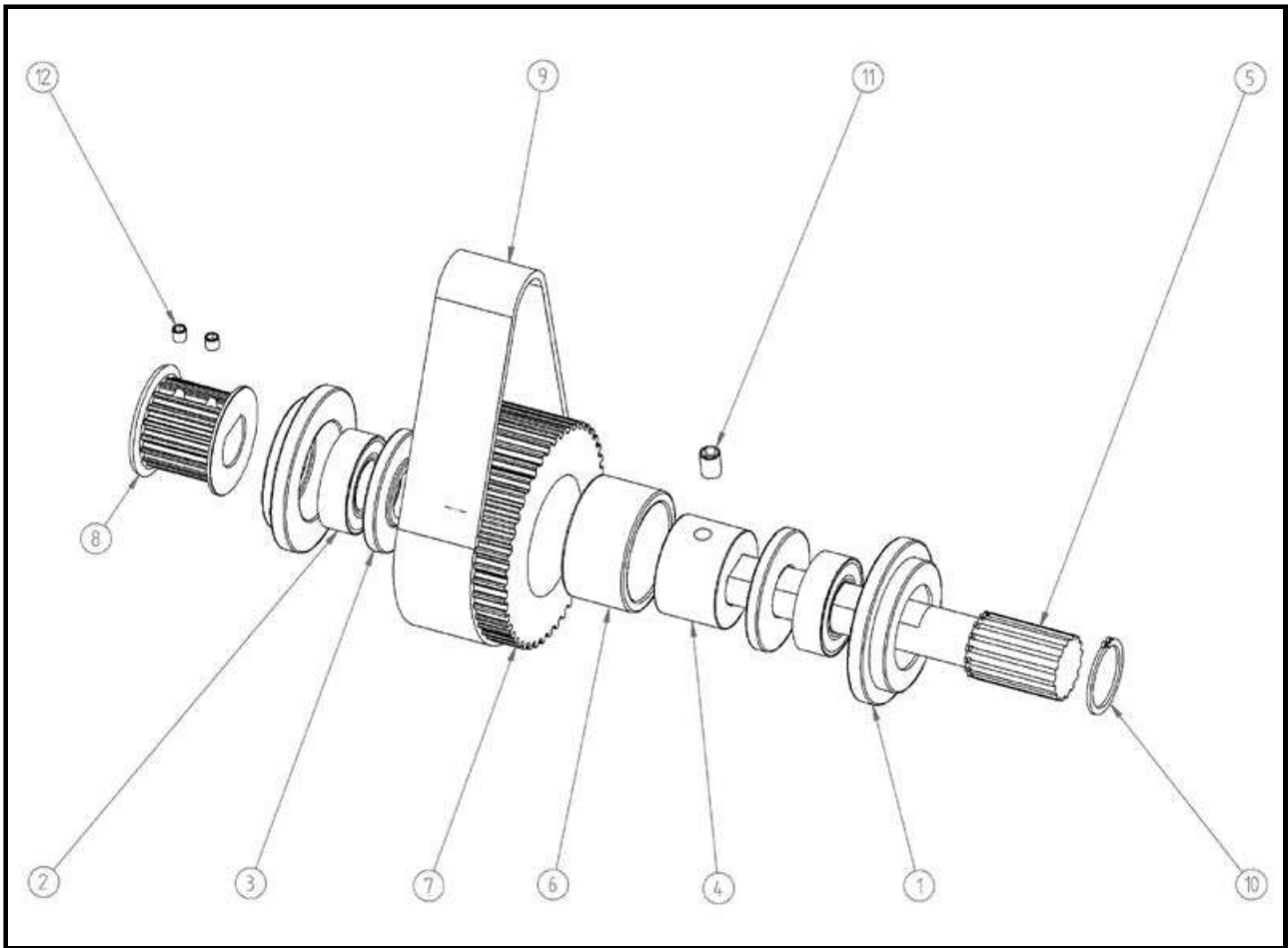
C4. GEAR BOX SET No.4



No.	Code	Desc. Goods	Q'ty	DEALER Total Price/set	MSRP Total Price/Set
ASS-2-2	2EVO20701A	TOP SHAFT ASSEMBLY			

No.	Code	Desc. Goods	Q'ty	DEALER Total Price/set	MSRP Total Price/Set
C4-1	3EVO20711A	TOP SHAFT	1		
C4-2	3EVO20743A	TOP SHAFT GRAR 14T	1		
C4-3	3COB06000A	BEARING 28X8	2		
C4-4	3COPM0752A	BELT CAM	2		
C4-5	3COB06000A	10X26 BEARING	2		
C4-6	3EVO20741A	TOP PULLEY 1 06 21T	1		
C4-7	3COPM0751A	BEARING CAP 26X10	1		
C4-8	3EVO20721A	CLUTCH HOUSING SET	1		
C4-9	3CO108015A	SIDE PLATE ENG BULTS	1		
C4-10	3CO408020	CLUTCH HOUSING BULTS	1		
C4-11	3EVO20722A	CLUTCH PLATE BRACKET	1		
C4-12	3EVO20785A	TOP SHAFT RIGHT SPACER	1		
C4-13	3EVO20784A	TOP SHSFT LEFT SPACER	1		

# C6. GEAR BOX SET NO.6

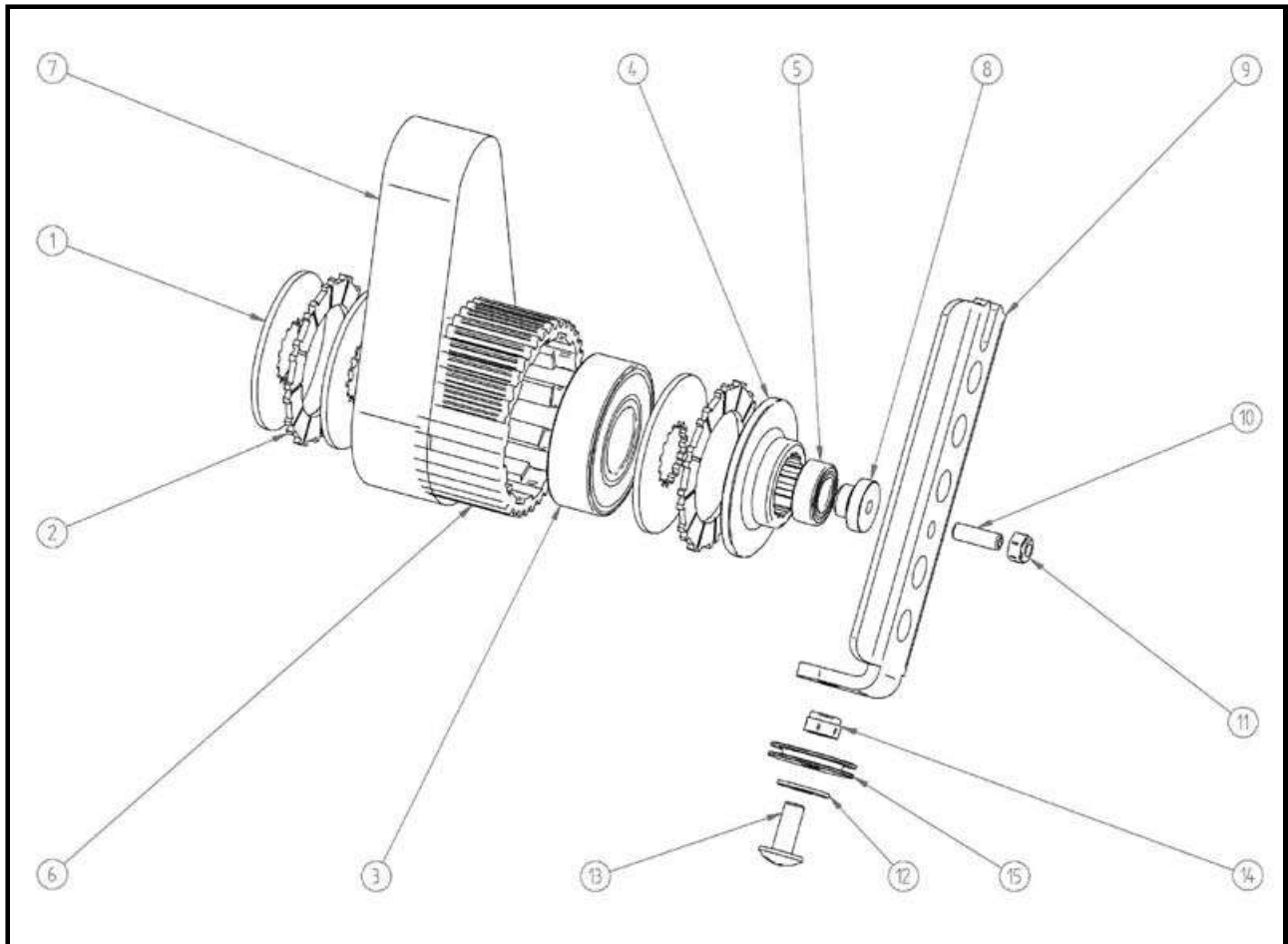


**C6. GEAR BOX SET No.6**

No.	Code	Desc. Goods	Q'ty	DEALER Total Price/set	MSRP Total Price/Set
ASS-2-3	2EVO20702A	BOTTOM SHAFT ASSEMBLY			
ASS-2-3b		PART BOTTOM SHAFT ASSEMBLY			

No.	Code	Desc. Goods	Q'ty	DEALER Total Price/set	MSRP Total Price/Set
C6-1	3COM0754A	BEARING CAP 30X15	2		
C6-2	3COB06002A	BEARING 30X15	2		
C6-3	3COPM0753A	SPACERS	2		
C6-4	3EVO20744A	BEARING ONE WAY SPACER	1		
C6-5	3EVO20712A	MANULE SHAFT22	1		
C6-6	3COBF3020A	ONE WAY OUTER BEARING	1		
C6-7	3EVO20731A	ONE WAY PULLY FINAL13	1		
C6-8	3EVO20742A	PULLY CENTER 4025 1 06 (17T)	1		
C6-8a		18T pully			
C6-9	3EVO20771A	SMALL BELT 1 06	1		
C6-10	3CORC1900A	D19 C RING	1		
C6-11	3CO406008A	M6X8 BULTS	1		
C6-12	3CO404004A	M4X4 BULTS	2		
		STEEL HOUSING	1		

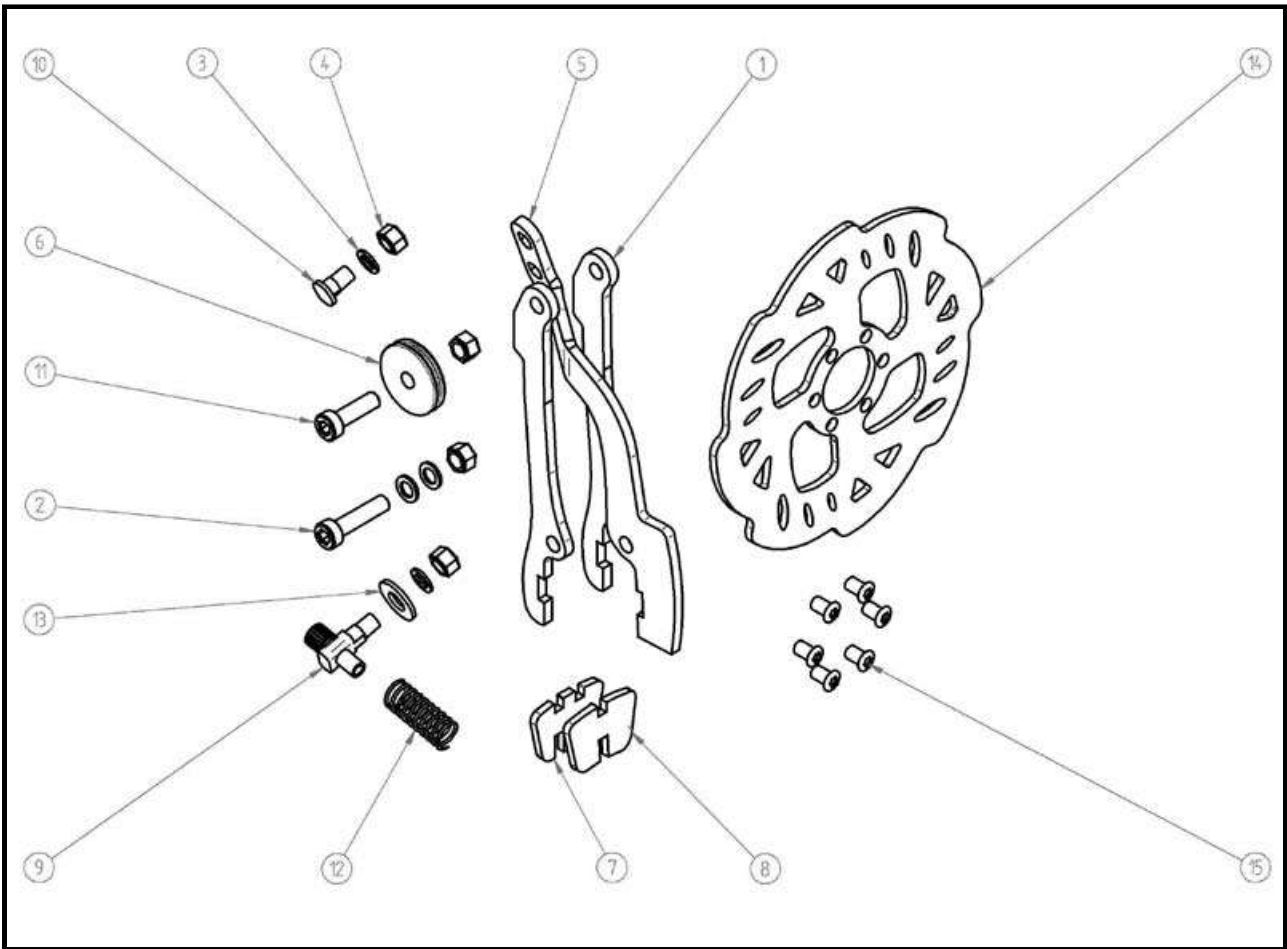
## C8. GEAR BOX SET No.8



No.	Code	Desc. Goods	Q'ty	DEALER Total Price/set	MSRP Total Price/Set
C8-1	3EVO20704A	CLUTCH PLATE 2	3		
C8-2	3EVO20765A	CLUTCH PLATE	2		
C8-3	3COB06204A	BEARING 20X47	1		
C8-4	3EVO20703A	CLUTCH PLATE 1	1		
C8-5	3COBL1910A	6X19 BEARING	1		
C8-6	3EVO20732A	2ND GEAR CLUTCH	1		
C8-7	3EVO20771A	SMALL BELT 1 06	1		
C8-8	3EVO20707A	CLUTCH COVER	1		
C8-9	3EVO20705A	CLUTCH LEVER	1		
C8-10	3CO105015A	M5X15 BULTS	1		
C8-11	3CON05000A	M5 BOLT (NYLON)	1		
C8-12	3COW16061A	GEAR BOX M6 WASHER	1		
C8-13	3CO106015A	CABLE ROLLER BULTS	1		
C8-14	3CON06000A	STUD M6 BOLT (NYLON)	1		
C8-15	3COPM0313A	CABLE ROLLER	1		



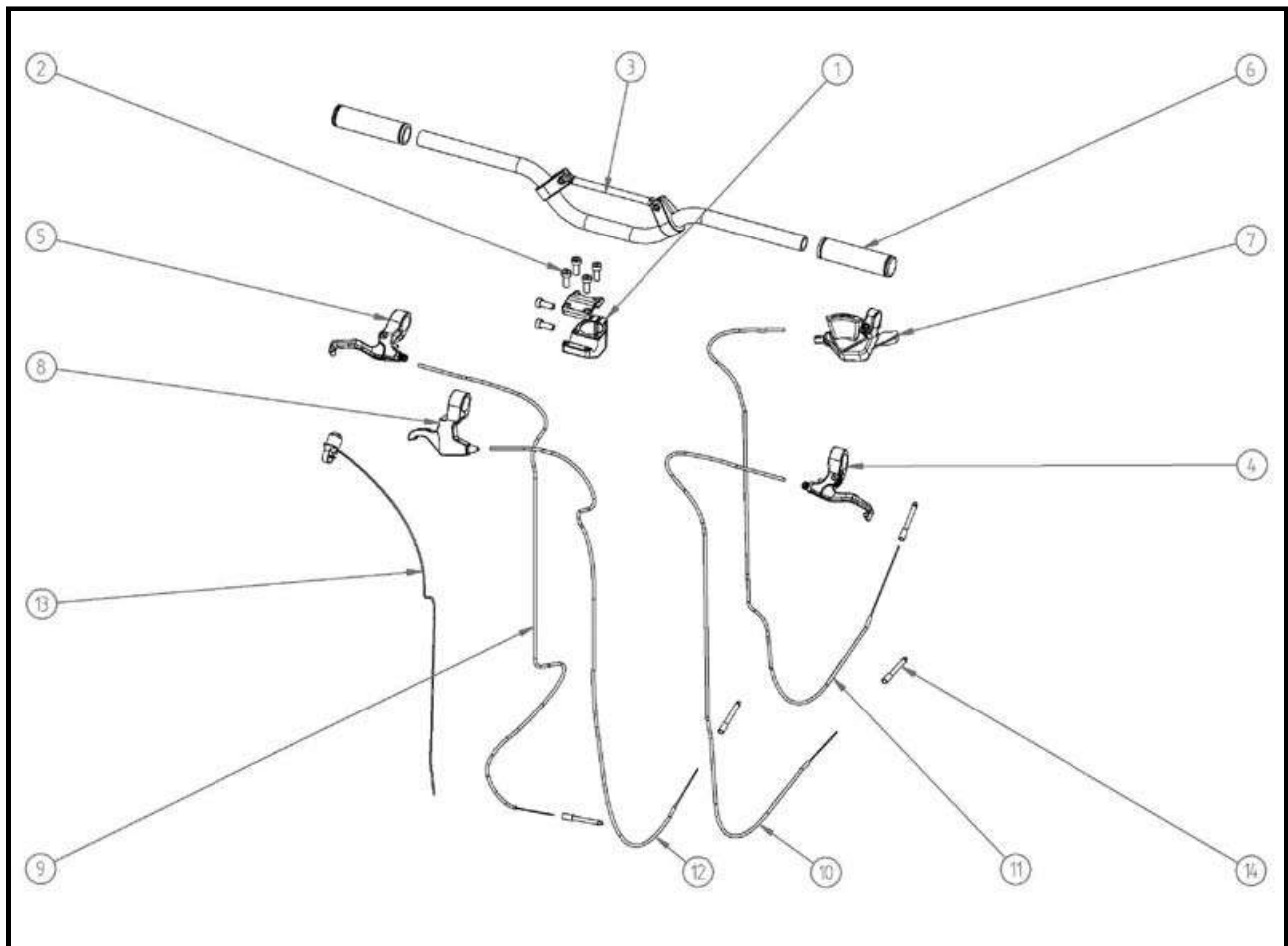
# D1. BRAKE SET



D1. BRAKE SET

No.	Code	Desc. Goods	Q'ty	DEALER Total Price/set	MSRP Total Price/Set
D1-1	3COPM0302A	REAR BRAKE 1	2		
D1-2	3CO10603B	BRAKE BLUTS	1		
D1-3	3COW13061A	BRAKE WASHER	4		
D1-4	3CON06000A	BRAKE BOLT	4		
D1-5	3COPM0301A	REAR BRAKE 2	1		
D1-6	3COPM0313A	CABLE ROLLER	1		
D1-7	3COPM0304A	PAD 2	1		
D1-8	3COPM0303A	PAD 1	1		
D1-9	3COPM0306A	ADG NUT 1	1		
D1-10	3COPM0307A	ADG NUT 2	1		
D1-11	3CO103020B	BRAKE ROLLER BULTS	1		
D1-12	3COPM0312A	BRAKE SPRING	1		
D1-13	3COW17081B	ADG WASHER	1		
D1-14	3COPM0305A	DISK HOT	1		
D1-15	3CO205012C	DISK BULTS	6		

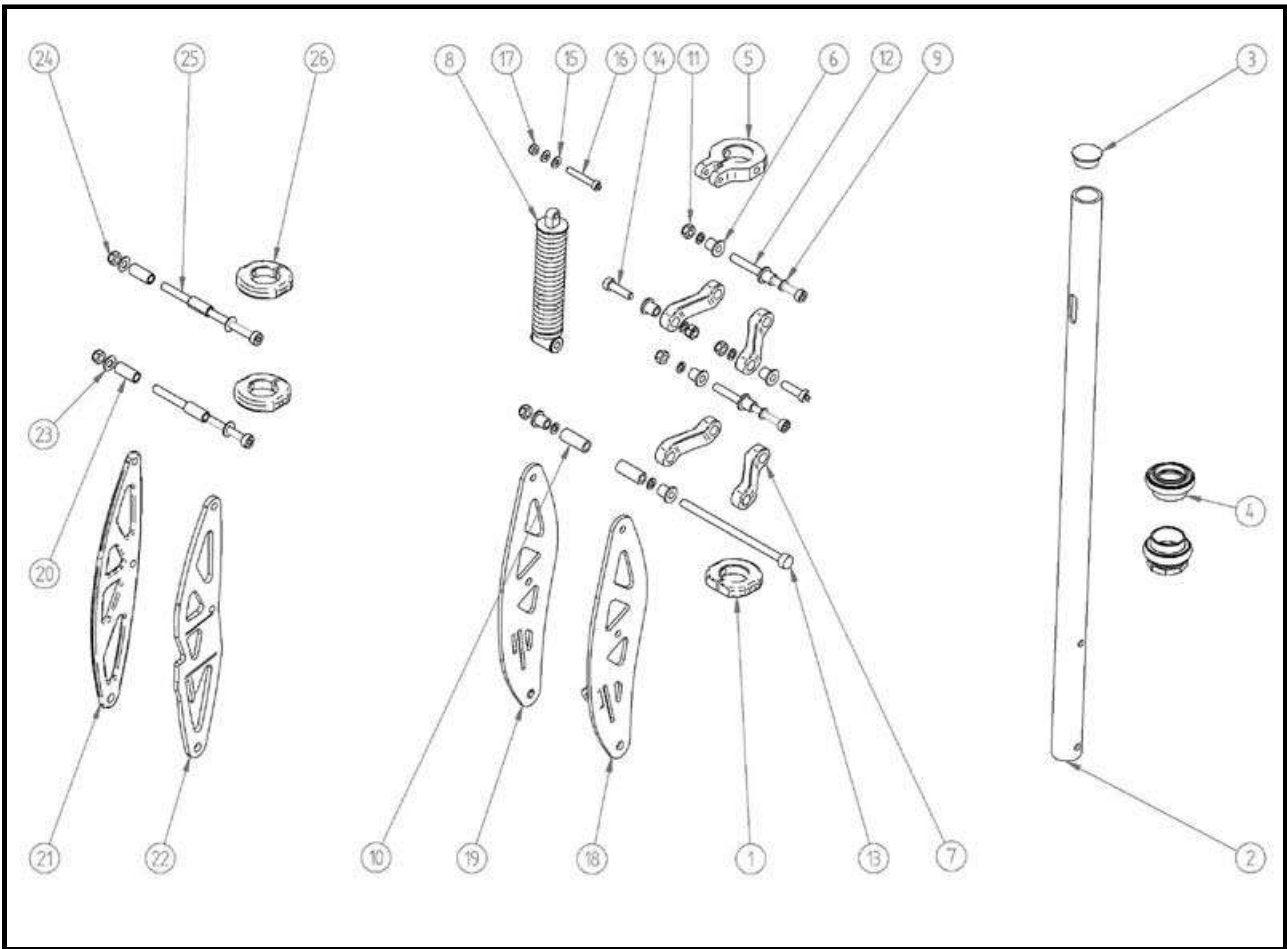
# E1. HANDLE BAR SET



E1. HANDLE BAR SET

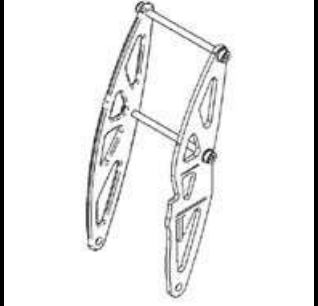
No.	Code	Desc. Goods	Q'ty	DEALER Total Price/set	MSRP Total Price/Set
E1-1	3EVO20130A	HANDLEBAR CAP SET	1		
E1-2	3CO108025A	HANDLEBAR BULTS	6		
E1-3	3EVO20110A	HANDELBAR	1		
E1-4	3COPM0308A	LEFT BRAKE LEVER SET	1		
E1-5	3COPM0309A	RIGHT BRAKE LEVER SET	1		
E1-6	3COPM0120A	GRIP	2		
E1-7	3EVO20761A	CLUTCH LEVER SET	1		
E1-8	3EVO20921A	GAS LEVER SET	1		
E1-9	3EVO20310A	FRONT BRAKE INNER	1		
E1-10	3EVO20311A	BACK BRAKE INNER	1		
E1-11	3EVO20762A	CLUTCH INNER	1		
E1-12	3EVO20922A	GAS INNER	1		
E1-13	3EV020923A	KILL SWITCH	1		
E1-14	3COPM0314A	INNER ELBOW	4		

# F1. FRONT FORK WITH STEERING SET



**F1. FRONT FORK WITH STEERING SET**

No.	Code	Desc. Goods	Q'ty	DEALER Total Price/set	MSRP Total Price/Set
		CAM LINK SUSPENSION KIT			
F1-1	3COPM0151A	RETAINER FLANGE	1		
F1-2	3EVO20140A	MX-STEERING TUBE	1		
F1-3	3COPM1070A	MAX STEERING CAP	1		
F1-4	3COPM0160A	HEAD SET	1		
F1-5	3COPM0152A	RETAINER FLANGE SHOCK	1		
F1-6	3COPM0271A	BUSHES FRONT SUSPENSION	8		
F1-7	3EV2X0230A	FRONT LINKS EVO SHOCK	4		
F1-8	3EV2X0240A	FRONT SHOCK	1		
F1-9	3COW13061B	FRONT FORK WASHER	8		
F1-10	3COPM0236A	L 36.4 SPACER	2		
F1-11	3CON08000A	FRONT FORK BOLT	5		
F1-12	3CO108100A	FRONT FORK L100 BULT	2		
F1-13	3CO108210A	FRONT FORK L210 BULT	1		
F1-14	3CO108060A	FRONT FORK L60 BOLT	2		
F1-15	3COW13061A	TOP SHOCK WASHER	2		
F1-16	3CO106040A	L40mm TOP SHOCK BULTS	1		
F1-17	3CON06000A	TOP SHOCK M6 BOLT (NYLON)	1		
F1-18	3EV2X0220A	LEFT FRONT FORK	1		
F1-19	3EV2X0210A	RIGHT FRONT FORK	1		
F1-20	3COPM0320A	L28 SPACER	4		
F1-21	3EVO20210A	FRONT FORK R	1		
F1-22	3EVO20220A	FRONT FORK L ASM	1		
F1-23	3COW17081A	FRONT FORK WASHER	4		
F1-24	3CON08000A	FRONT FORK BOLT	2		
F1-25	3CO108135C	FRONT FORK BULTS	2		
F1-26	3COPM0150A	RETAINER FLANGE	2		

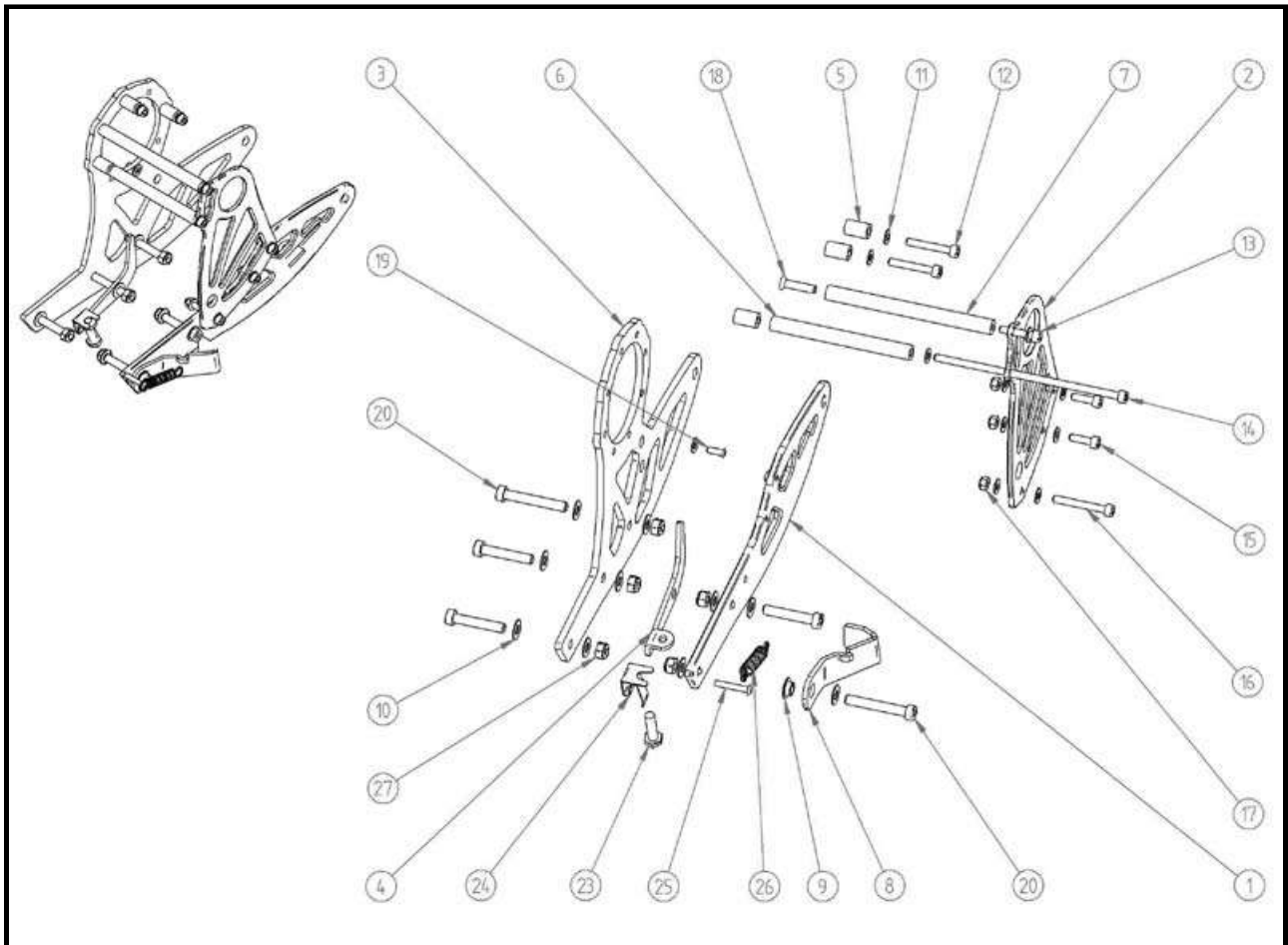


**EVO 2 FRONT FORK SET**



**EVO 2X FRONT FORK SET**

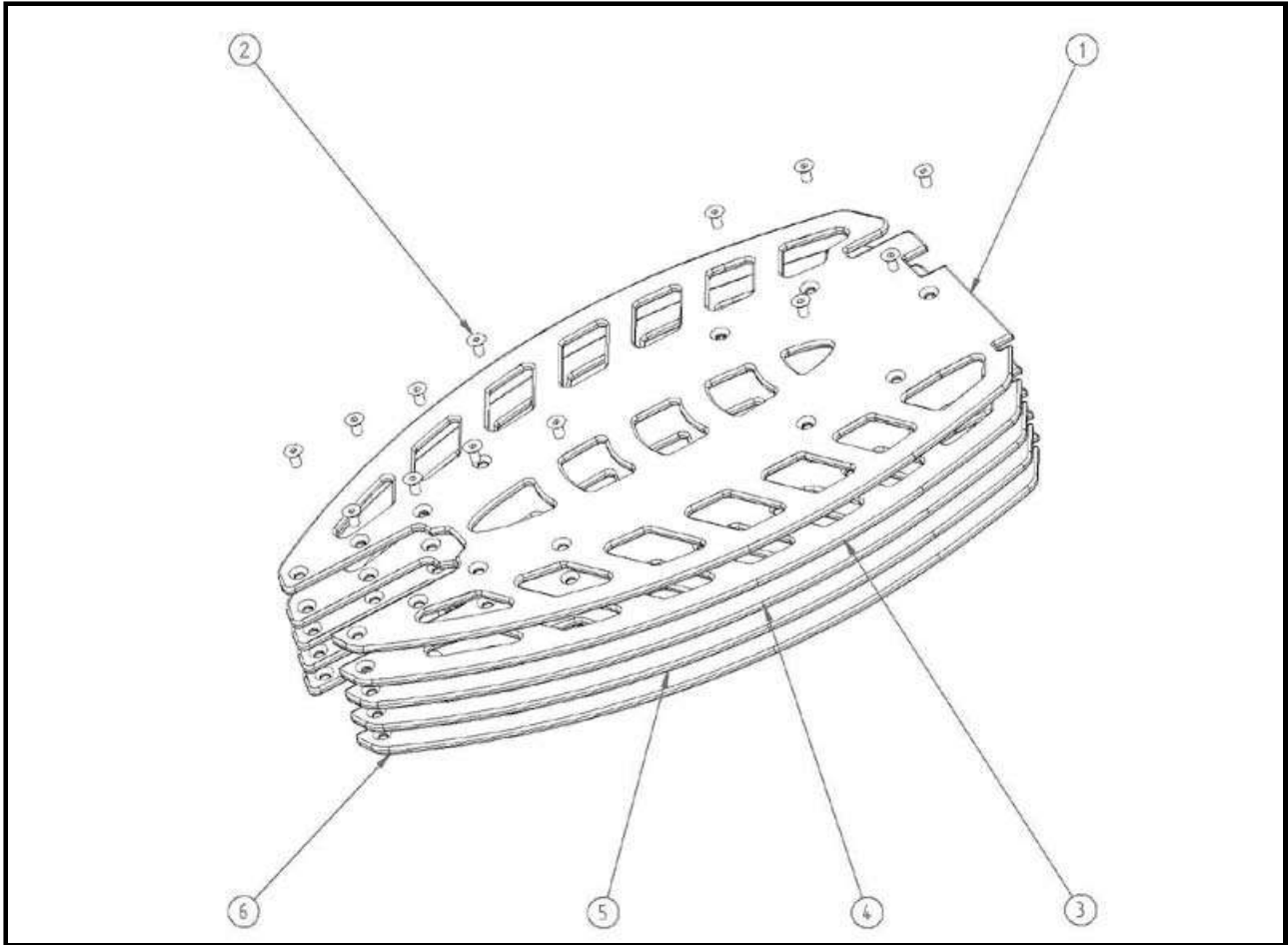
# G1. ASSEMBLY



G1. ASSEMBLY

No.	Code	Desc. Goods	Q'ty	DEALER Total Price/set	MSRP Total Price/Set
G1-1	3EVO20630A	SWING ARM 2 SPEED	1		
G1-2	3EVO20620A	SIDE PLATE ENG	1		
G1-3	3EVO20610A	NEW ENGING MOUNT	1		
G1-4	3EVO20580A	TENSIONER BENT	1		
G1-5	3EVO20781B	L20 SPACER	3		
G1-6	3EVO20782B	L125.5 SPACER	1		
G1-7	3EVO20783B	L147.5 MAIN SPACER	1		
G1-8	3EVO20560A	SIDE STAND	1		
G1-9	3COPM0571A	SIDE STAND BUSH	1		
G1-10	3COW17081A	M8 WASHER	10		
G1-11	3COW13061A	M6 WASHER	11		
G1-12	3CO106035E	L40mm ENG BULTS	2		
G1-13	3CO106030A	L30mm GERA PLATE BULTS	1		
G1-14	3CO106165D	L165mm ENG BULTS	1		
G1-15	3CO106020A	SIDE PLATE ENG SHORT BULTS	2		
G1-16	3CO106045B	SIDE PLATE ENG LONG BULTS	1		
G1-17	3CON06000A	SIDE PLATE ENG BOLT	3		
G1-18	3CO306030A	L30mm GEAR PALTE BULTS	1		
G1-19	3CO106015C	L15mm ENG BULTS	1		
G1-20	3CO108055B	SWING ARM LONG BULTS	2		
G1-21	3CO108045B	SWIND ARM SHORT BULTS	3		
G1-22	3CON08000A	FRONT FORK BOLT	5		
G1-23	3CO508025A	TENSIONER BENT BULTS	1		
G1-24	3COPM0581A	TENSIONER BENT HOLD SPRING	1		
G1-25	3CO605030A	SIDE STAND BLUTS	1		
G1-26	3COPM0572A	SIDE STAND SPRING	1		
G1-27	3CON08000A	FRONT FORK BOLT	5		

# G3. DECKS

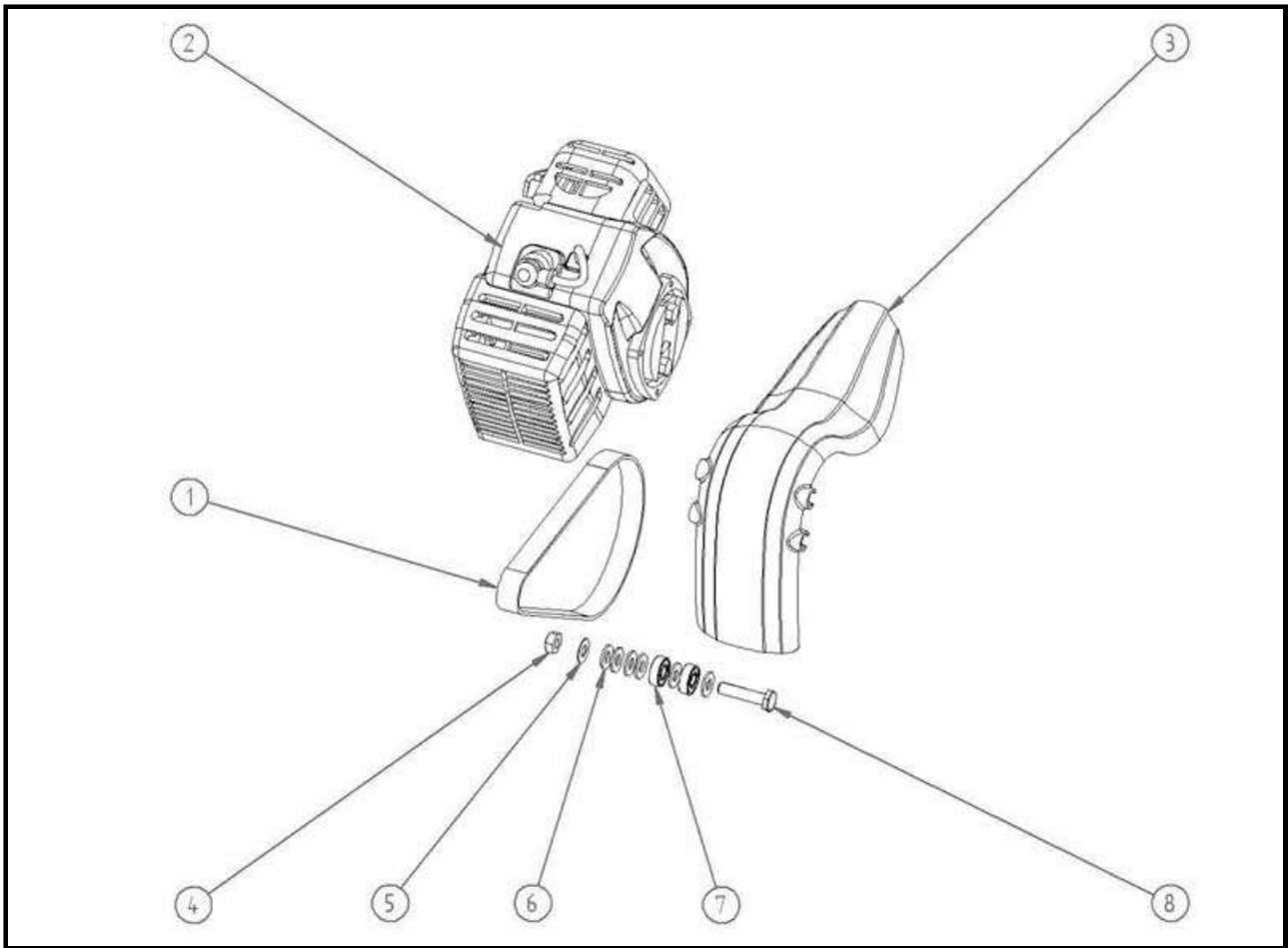


G3. DECKS

No.	Code	Desc. Goods	Q'ty	DEALER Total Price/set	MSRP Total Price/Set
G3-1	2EVO20010A	GOLD DECK	1		
G3-2	3CO306012A	DECK SHORT BULTS	13		
G3-3	3EVO20020A	RED DECK	1		
G3-4	2EVO20030A	BLUE DECK	1		
G3-5	2EVO20040A	PURPLE DECK	1		
G3-6	2EVO20050A	SILVER DECK	1		

No.	Code	Desc. Goods	Q'ty	DEALER Total Price/set	MSRP Total Price/Set
	3COPM0090A	SCRUB BOARD	1		
	3COPM0091A	SCRUB BOARD CAP	1		
	2EVO20060A	Black Tape (EVO 2)	1		
	2EVO2X0060A	Black Tape (EVO 2X)	1		
	3COP21210A	EVO Sticker	1		

# G4. REAR ASSEMBLY

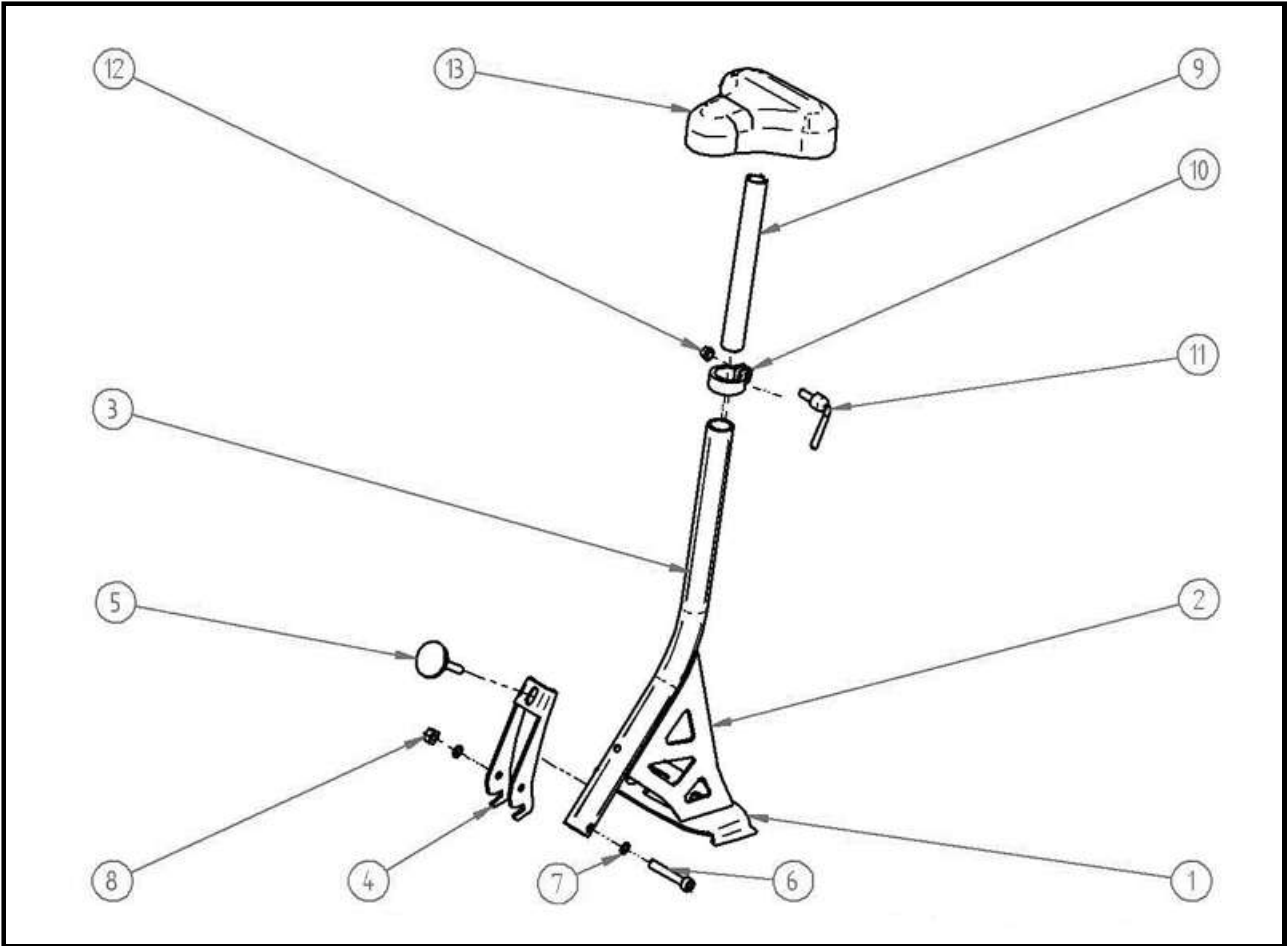


G4. REAR ASSEMBLY

No.	Code	Desc. Goods	Q'ty	DEALER Total Price/set	MSRP Total Price/Set
G4-1	3EVO20822A	5M 650 BELT	1		
G4-2	3EVO20910A	ENGINE Active 50cc	1		
G4-3	3EVO20640A	REAR MUD GARD Black	1		
G4-3a		REAR MUD GARD Chrome			
G4-4	3CON10000A	BACK WHEEL BOLT	1		
G4-5	3CO510150C	FRONT WHEEL BULTS	1		
G4-6	3COW22102A	INDOLENCS PULLEY WASHER	6		
G4-7	3COB06000A	10X26 BEARING	2		
G4-8	3CO510045A	INDOLENCE PULLEY BULTS	1		



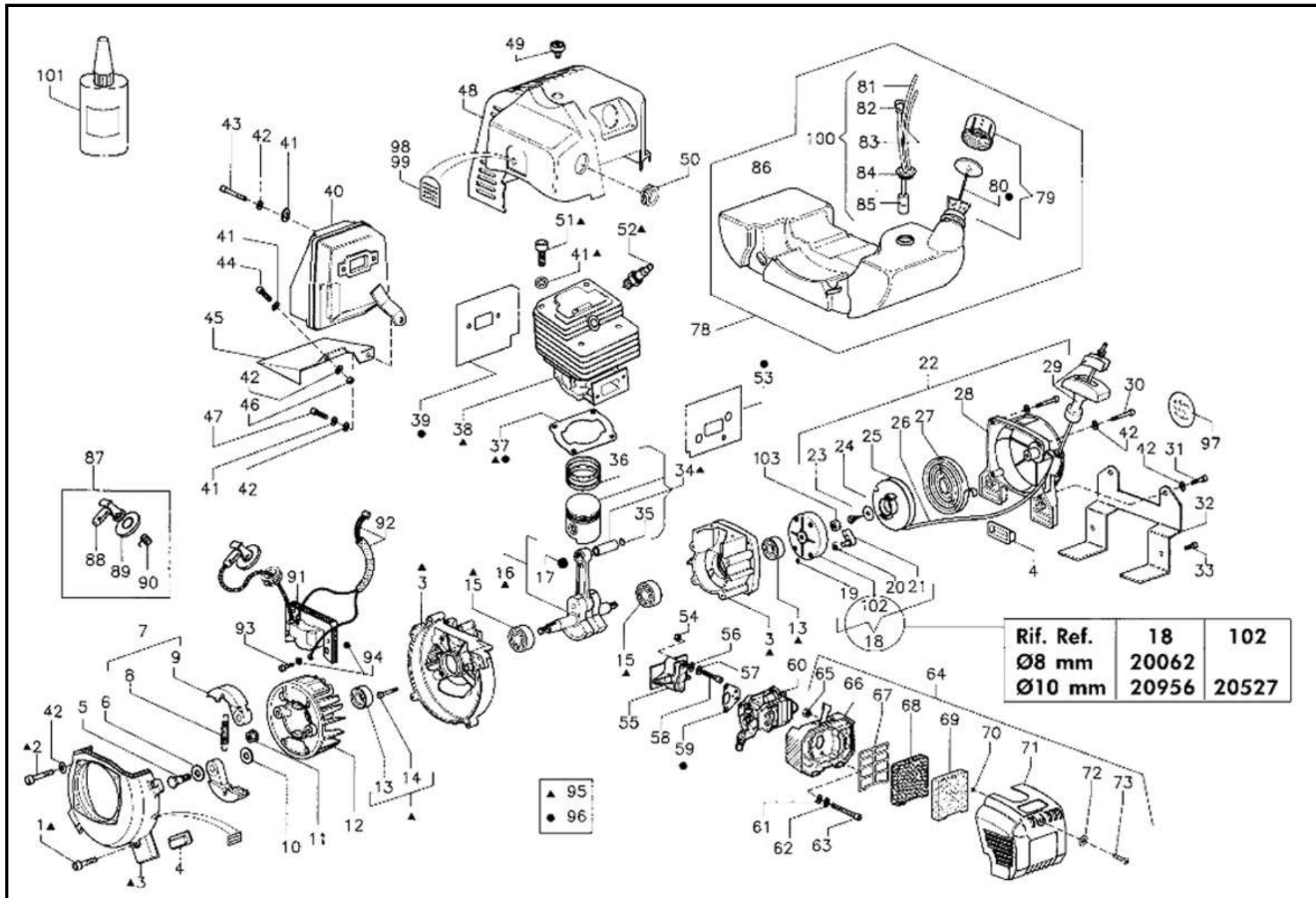
# G5. SEAT ASSEMBLY



No.	Code	Desc. Goods	Q'ty	DEALER Total Price/set	MSRP Total Price/Set
		QUICK RELEASE SEAT ASSEMBLY			
G5-1	3COPM1014A	SEAT PLATE	1		
G5-2	3COPM1013A	GUSET SEAT	2		
G5-3	3COPM1011A	SEAT TUBE	1		
G5-4	3COPM1012A	COM LOCK FOR SEAT	1		
G5-5	3COPM1020A	THUMB BOLT	1		
G5-6	3CO108050A	SEAT SET BOLT	1		
G5-7	3COW17081A	M8 WASHER	2		
G5-8	3CON08000A	SEAT SET NUT	1		
G5-9	3COPM1030A	SEAT TOP TUBE	1		
G5-10	3COPM1010A	QUICK FLANGE	1		
G5-11	3COPM1041A	QUICK FLANGE BOLT	1		
G5-12	3COPM1042A	QUICK FLANGE NUT	1		
G5-13	3COPM1050A	CUSHION	1		

# H. 50cc EXPLODED ENGINE PARTS

## H. 50cc EXPLODED ENGINE PARTS

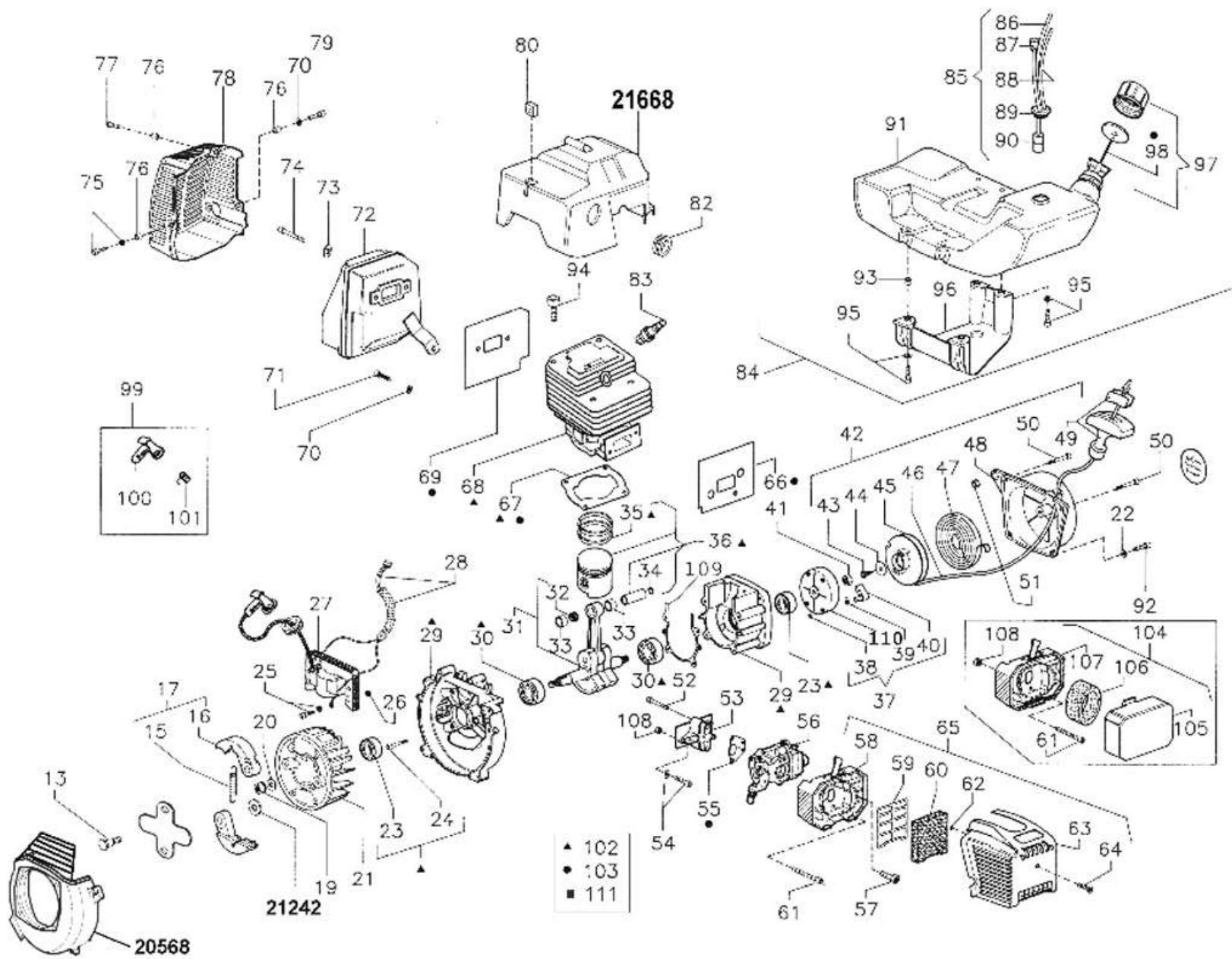


## ENGINE (ACTIVE 49.5cc) GR.3

REF.	PART NO.	Q.	DESCRIPTION	REF.	PART NO.	Q.	DESCRIPTION
1	20001	3	Screw	51	20359	4	Screw
2	20366	1	Screw	52	20770	1	Spark Plug
3	20580	1	Crankcase	53	20344	1	Gasket
4	20083	4	Rubber	54	20060	2	Nut
5	20068	2	Screw	55	20046	1	Insulator
6	20069	2	Washer	56	20037	2	Washer
7	20065	1	Clutch	57	20021	2	Washer
8	20067	1	Spring	58	20366	2	Screw
9	20049	2	Shoe	59	20048	1	Gasket
10	20070	2	Washer	60	20050	1	Carburettor
11	20058	2	Nut	61	20037	2	Washer
12	20039	1	Flywheel	62	20021	2	Washer
13	20003	2	Seal	63	20079	2	Screw
14	20002	4	Screw	64	20559	1	Filter
15	20004	2	Bearing	65	20429	1	Nut
16	21001	1	Crankshaft	66	20562	1	Bracket
17	20026	1	Bearing	67	20563	1	Screen
18	20956	1	Driver	68	20564	1	Piece
19	20087	2	Snapping	69	20564	1	Piece
20	20084	2	Spring	70	20566	1	O.R.
21	20085	2	Pawl	71	20567	1	Cover
22	20074	1	Starter	72	20568	1	Washer
23	20076	1	Screw	73	20172	1	Screw
24	20077	1	Washer	74			
25	20055	1	Pulley	75			
26	20078	1	Rope	76			
27	20075	1	Spring	77			
28	20059	1	Housing	78	20570	1	Fuel Tank
29	20081	1	Handle	79	20094	1	Fuel Cap
30	20366	2	Screw	80	20095	1	Gasket
31	20359	2	Screw	81	20097	1	Inlet Pipe
32	20457	1	Bracket	82	20100	1	Breather
33	20173	2	Screw	83	20091	1	Overflow Pipe
34	20018	1	Piston 40mm Dia (4.3-4.5)	84	20099	1	Grummet
34	20023	1	Piston 44mm Dia (49.5cc)	85	20093	1	Filter
35	20020	2	Snapping	86	20391	1	Fuel Tank
36	20019	2	Ring 40mm Dia	87	20571	1	S.P. Cover
36	20024	2	Ring 44mm Dia	88	20572	1	S.P. Cover
37	20015	1	Gasket	89	20573	1	Guard
38	20012	1	Cyl.+ Pis. (40mm - 4.3/4.5)	90	20574	1	Spring
38	20013	1	Cyl.+ Pis. (44mm - 49.5cc)	91	20575	1	Coil
39	20581	1	Gasket	92	20040	1	Wire
40	20101	1	Muffler	93	20366	2	Screw
41	20896	2	Washer	94	20037	4	Washer
42	20278	2	Washer	95	20576	1	Short Block 40mm Dia (4.3/4.5)
43	20022	2	Screw	95	20577	1	Short Block 44mm Dia (49.5cc)
44	20277	1	Screw	96	20578	1	Gaskets
45	20582	1	Sheet	97	20088	1	Decal Active
46	20060	1	Nut	98	20045	1	Decal Big 4.5
47	20359	1	Screw	99	20579	1	Decal Big 49.5cc
48	20583	1	Engine Cover (Green)	100	20042	1	Tubi Mix+Valve+Filtro Ens. Kit
48	20584	1	Engine Cover (Red)	101	20311	1	50mlFrenaFil-Fix.FiletsRetaining
49	20044	1	Screw	102	20527	1	Bracket
50	20586	1	Eyelet	103	20982	1	Nut

# I. 40cc EXPLODED ENGINE PARTS

## I. 40cc EXPLODED ENGINE PARTS





## Active 40cc parts

RIF.	COD.			RIF.	COD.		
REF.	N° / P P / N°	Q.	DESCRIPTION	REF.	N° / P P / N°	Q.	DESCRIPTION
1	20649	1	HOUSING	58	20730	1	HOUSING
2	20173	1	SCREW	59	20563	1	SCREEN
3	20064	3	SCREW	60	20731	1	PIECE
4	20001	1	SCREW	61	20079	1	SCREW
5	20650	1	HUB	62	20566	1	O.R.
6	20001	1	SCREW	63	20733	1	COVER
7	20891	1	SHOCK ABS.	64	20172	1	SCREW
8	20651	1	MOUNTING	65	20734	1	COMP. FILT.
9	20218	1	SNAP RING	66	20664	1	GASKET
10	20642	1	BEARING	67	20662	1	GASKET
11	20229	1	SNAP RING	68	20661	1	CYL+ PIS. (3.7 - 4.0)
12	20739	1	DRUM	68	20895	1	CYL+ PIS. (3.2 - 3.5)
13	20068	2	SCREW	69	20663	1	GASKET
14	20069	2	WASHER	70	20278	1	WASHER
15	20067	1	SPRING	71	20064	1	SCREW
16	20049	2	SHOE	72	20668	1	MUFFLER
17	20065	1	CLUTCH	73	20896	2	WASHER
18	20070	2	WASHER	74	20022	1	SCREW
19	20058	1	NUT	75	20359	1	SCREW
20	20711	1	WASHER	76	20560	3	EYELET
21	20676	1	FLYWHEEL	77	20858	1	SCREW
22	20278	4	WASHER	78	20669	1	GUARD
23	20640	2	SEAL	79	20064	1	SCREW
24	20047	3	SCREW	80	20879	1	NUT
25	20366	2	SCREW	81	20671	1	COVER (Green)
26	20896	2	WASHER	81	20670	1	COVER (Red)
27	20741	1	COIL	82	20586	1	EYELET
28	21346	1	WIRE	83	20770	1	SPARK PLUG
29	20738	1	CARTER - CANKCASE	84	20646	1	FUEL T.
30	20641	2	BEARING	85	20042	1	KIT
31	20463	1	CRANKSHAFT	86	20097	1	INLETPPIPE
32	20026	1	BEARING	87	20100	1	BREATHER
33	20893	2	WASHER	88	20091	1	OVERF. PIPE
34	20020	2	SNAP RING	89	20099	1	GRUMMET
35	20019	2	RING (40mm)	90	20093	1	FILTER
36	20674	1	PISTON - Ø 40 mm	91	20645	1	FUEL TANK
37	20652	1	DRIVER	92	20064	2	SCREW
38	20087	2	SNAP RING	93	20369	4	EYELET
39	20084	2	SPRING	94	20064	4	SCREW
40	20654	2	PAWL	95	20359	4	SCREW
41	20027	1	NUT	96	20673	1	BRACKET
42	20659	1	STARTER	97	20094	1	FUEL CAP
43	20076	1	SCREW	98	20095	1	GASKET
44	20316	1	WASHER	99	20571	1	S.P. COVER
45	20656	1	PULLEY	100	20572	1	S.P. COVER
46	20657	1	ROPE	101	20574	1	SPRING
47	20658	1	SPRING	102	20735	1	SHORT BLOCK (3.2 - 3.5)
48	20655	1	HOUSING	102	20736	1	SHORT BLOCK (3.7 - 4.0)
49	20081	1	HANDLE	103	20737	1	GASKET KIT
50	20001	2	SCREW	104	20051	1	FILTER
51	20060	1	NUT	105	20053	1	COVER
52	20894	1	SCREW	106	20052	1	AIR FILTER
53	20666	1	INSUL.	107	20054	1	BRACKET
54	20359	2	SCREW	108	20060	1	NUT
55	20665	1	GASKET	109	21022	1	GASKET
56	20643	1	CARBURAT.	110	20653	1	BRACKET
57	20732	1	SPACER	111	20922	1	CARTER COMPL.