



BANKS *Outdoors*



INSTRUCTION MANUAL

LIMITED LIFETIME WARRANTY

The Banks Outdoors product(s) purchased from our authorized dealers is warranted to be free from defects in material and workmanship for as long as the registered original owner owns the product. Banks Outdoors will repair or replace your product, with the same or comparable model free of charge (shipping charges not included) for life, once the product has been registered with Banks Outdoors, in the event of a defect in materials or workmanship occurring during normal use. The warranty only extends to the original retail purchaser named on the product registration.

WHAT IS NOT COVERED?

Not covered under this warranty are failures due to misuse, abuse or normal wear and tear and improper installation. Additionally, failures due to acts of God & nature, such as storms, strong winds, and animal damage are not covered by this warranty.

NO ADDITIONAL WARRANTY APPLIES

The Limited Lifetime Warranty is the exclusive warranty for Banks Outdoors products. Dealers, Retailers, or Representatives are not authorized to alter this warranty or create additional warranties on behalf of Banks Outdoors.

FEEDBANK & WILD WATER® OVERVIEW

CONGRATULATIONS ON PURCHASING YOUR NEW BANKS PRODUCT!

Implementing a solid feeding program has never been easier with Banks Outdoors' gravity-fed Feedbank deer feeders. The single post design of this feeder allows big bucks to feed unhampered and unharmed by legs getting in the way. These feeders also permit you to set up multiple deer feeding sites by installing different posts around your property for easy location changes.

Wild Water® is the watering system for all the wildlife on your property. Reduce the effect disease and dehydration have on your deer herd. Fill the Wild Water® concealed tank and let it flow into the trough. Once it is filled to capacity, the system will shut itself off until water is needed again. Water multiple animals at one time.



FEEDBANK 40

INCLUDED PARTS:

(1) Feeder	(1) Steel Strap
(1) Camo Strap	(2) Feed Ports
(2) 1/4-20" Bolts	(6) 1/4" Lock Washers
(4) Fender Washers	(4) T-Style Thumb Bolts
	(1) Cover

1. Unpack the Feedbank from the box.
2. Place the cover on the feeder so that the name reads forward.
3. Take your steel strap and bolt it to the back of the feeder with (2) 1/4-20" bolts and (2) lock washers.



4. To install the feeder port, first take a t-style thumb bolt and slide a lock washer on and then a fender washer. Take the t-style thumb bolt with washers and slide the bolt from the inside of the port out. Match up to the threaded insert at the bottom of the body of the feeder and screw the bolt to it, attaching the feed port. Do the same thing to the second bolt for that feed port. Repeat this for all ports.



FEEDBANK 40

5. Attach camo strap around the steel strap and attach the Feedbank to your desired post or tree.



6. Feedbank 40 can attach to a tree, fence post or t-post.



7. Fill with feed. All feed ports slide in and out when t-style thumb bolt is loosened, to control flow. Set flow according to type of feed you are using.

8. Your Feedbank is ready



FEEDBANK 150

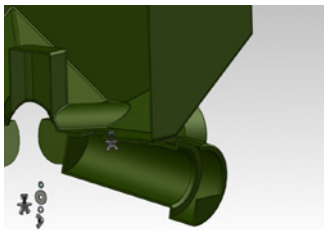
INCLUDED PARTS:

(1) Feeder	(8) 1/4-20" Lock Washers	(8) 1/4-20" Wing Nuts
(4) Feed Ports	(8) 1/4-20 x 1" Bolts	(8) 1/4-20" Internal Star Lock Washers
(1) Cover	(8) 1/4" Fender Washers	Lock Washers

1. Unpack the Feedbank from the box. You should have 6 main parts.
2. To attach cover, place it on top of the feeder so the locking tabs are above the (2) latches on each side. Latch over the top of the tabs to secure the cover.



3. To attach the Feed Port, first take (1) of the 1/4-20x1" Bolts and slide on the Internal Star Lock Washer. From the inside of the feeder, press through the bolt and washer into the attachment hole. Take a Feed Port and also connect to this 1" Bolt that is sticking through the bottom of the feeder. From the inside of the feed port, place the fender washer on the 1" Bolt. Then, place the 1/4-20" Lock Washer onto the bolt. To fasten all together, place the 1/4-20" Wing Nut on the bolt and tighten to a snug fit. Repeat this step for each attachment hole on the feeder.



FEEDBANK 150

4. After the cover and Feed Ports are installed, you need to purchase an 8' 4x4 green-treated post. Dig into the ground 4' and backfill the post so it is level.
5. Slide Feedbank over the post.
6. Another option is to cut off a tree and slide it over a trunk of the tree - just be sure to cut it off level, leaving 4' above the ground.
7. Fill with feed. All feed ports slide in and out, when bolts are loosened to control flow. Set flow according to type of feed you are using.
8. Your Feedbank is ready to go!



FEEDBANK 300

INCLUDED PARTS:

(1) Feeder	(1) Cover
(4) Feed Ports	(8) 1" Fender Washer
(8) T-Style Thumb Bolts	(8) 1/4" Lock Washers

1. Unpack the Feedbank from the box. You should have 6 main parts.
2. To attach cover, place it on top of the feeder so the locking tabs are above the (2) latches on each side. Latch over the top of the tabs to secure the cover.



3. To install the feeder port, first take a t-style thumb bolt and slide a lock washer on and then a fender washer. Take the t-style thumb bolt with washers and slide the bolt from the inside of the port out. Match up to the threaded insert at the bottom of the body of the feeder and screw the bolt to it, attaching the feed port. Do the same thing to the second bolt for that feed port. Repeat this for all ports.



FEEDBANK 300

4. After the cover and Feeder Ports are installed, you need to purchase an 8' 4x4 green-treated post. Dig into the ground 3' and backfill the post so it is level.
5. Slide Feedbank over the post.
6. Another option is to cut off a tree and slide it over a trunk of the tree - just be sure to cut it off level.
7. Fill with feed. All feed ports slide in and out, when t-style thumb bolt is loosened to control flow. Set flow according to type of feed you are using.
8. Your Feedbank is ready to go!



FEEDBANK 600

INCLUDED PARTS:

(1) Feeder	(1) Cover
(4) Feed Ports	(8) 1" Fender Washers
(8) T-Style Thumb Bolts	(8) 1/4" Lock Washers

1. Unpack the Feedbank from the box. You should have 6 main parts.
2. To attach cover, place it on top of the feeder so the locking tabs are above the (2) latches on each side. Latch over the top of the tabs to secure the cover.



3. To install the feeder port, first take a t-style thumb bolt and slide a lock washer on and then a fender washer. Take the t-style thumb bolt with washers and slide the bolt from the inside of the port out. Match up to the treaded insert at the bottom of the body of the feeder and screw the bolt to it, attaching the feed port. Do the same thing to the second bolt for that feed port. Repeat this for all ports.



FEEDBANK 600

4. After the cover and Feeder Ports are installed, you need to purchase an 8' 6x6 green-treated post. Dig into the ground 3' and backfill the post so it is level.
5. Slide Feedbank over the post.
6. Another option is to cut off a tree and slide it over a trunk of the tree - just be sure to cut it off level.
7. Fill with feed. All feed ports slide in and out, when t-style thumb bolt is loosened to control flow. Set flow according to type of feed you are using.
8. Your Feedbank is ready to go!



INCLUDED PARTS:

(1) Trough	(1) 100 Gallon Tank
(1) 2" Plug	(1) 1 1/4" Plug
(1) Float Valve Protection Cover	(4) 1 3/4" Cover Bolts
(1) Flot Valve	

1. Set your trough on level ground.
2. Set your tank on level ground over the top of the trough.
3. Install the float valve to the outlet hole on the Wild Water tank.
4. Fill the tank through the 2" hole.
5. After the tank is full, insert the 2" plug into the fill hole.
6. Allow water to fill into the trough until it automatically shuts itself off. Water should not overflow the trough. If water does proceed over the top of the trough, verify that the trough is level.
7. Install the float valve protection cover with the (4) 1 3/4" bolts.



INCLUDED PARTS:

(2) 3' Trough (s)	(1) 300 Gallon Tank
(1) 2" Plug	(2) Float Valves
(2) Float Valve Protection Covers	(8) 1 3/4" Cover Bolts

1. Set your troughs on level ground.
2. Set your tank on level ground over the top of the troughs.
3. Install the 2 float valves to the outlet holes on the Wild Water tank.
4. Fill the tank through the 2" hole.
5. After the tank is full, insert the 2" plug into the fill hole.
6. Allow water to fill into the trough until it automatically shuts itself off. Water should not overflow the troughs. If water does proceed over the top of the troughs, verify that the troughs are level.
7. Install the 2 float valve protection covers with the (8) 1 3/4" bolts.



WILD WATER® FILL TANK

INCLUDED PARTS:

(1) 100 Gallon Tank
(1) Shut-off Valve

(1) 6' Hose
(1) 2" Plug

1. Attach hose and shut-off valve to the outlet hole on your Wild Water.
2. Make sure valve is in shut-off position and fill your 100 gallon tank.
3. Remove plug on top of the Wild Water and insert hose into the opening.
4. Open valve and fill Wild Water.



WILD WATER® BLADDER

INCLUDED PARTS:

- | | |
|--------------------|--------------------|
| (1) Bladder | (1) Hose |
| (1) Shut-off Valve | (1) Screw-on Cover |

1. Attach hose and shut-off valve to the outlet hole on the Bladder.
2. Make sure valve is in shut-off position and fill Bladder.
3. Remove plug on top of the Wild Water and insert hose into the opening.
4. Open valve and fill Wild Water.

