

MONTS

ONEAL



MATT MACDUFF





# AZONIC

*PEDAL*

*HANDLEBAR*

*STEM*

*GRIP*

*FENDER*

*UMMA GUMMA*

*FRAME GUARDS*

**|**



## LEGEND PEDAL 3121-0\*\*

Graphic: Color	Article N°
Black	3121-000
Blue	3121-001
Red	3121-002
Silver	3121-003

### FEATURES:

- As ridden by Matt MacDuff
- Thin and lightweight flat pedal
- Forged and CNC machined 6061 Aluminum cage
- Platform: 107 x 101mm
- Zero axle bulge profile with flat surfaces and fully concave platform for ultimate grip
- 4130 Chromoly spindle
- Durable DU bushings and dual-sealed bearings for maximum protection against the elements
- 16 replaceable pins per pedal
- Weight: 370g/ pair
- Spare pins and tool included

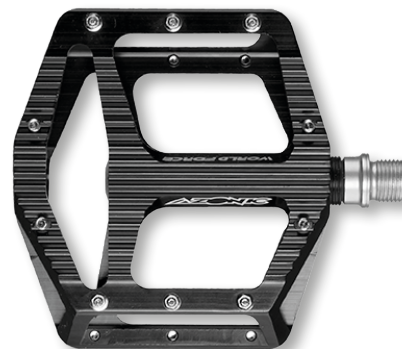
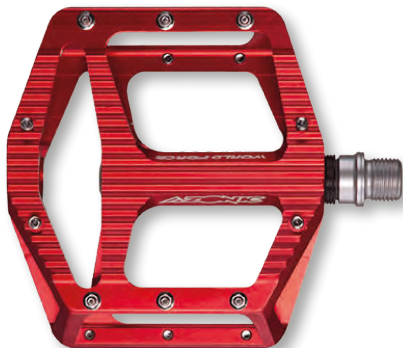
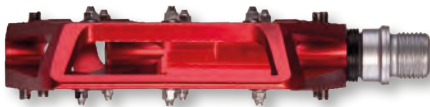


## WORLD FORCE PEDAL 3120-1\*\*

Graphic: Color	Article N°
FLAT: Black	3120-100
FLAT: Red	3120-101

### FEATURES:

- As ridden by Matt MacDuff
- The ultimate flat pedal developed over 2 years with top riders
- CNC Aluminum cage
- True concave platform achieved through both platform shape and pin height
- Platform surface is grooved for extra grip beyond the pins
- Outboard and center bearings and inboard bushing for long-life and smooth running
- Durable and strong 4130 Chromoly axle
- Perfect balance of weight, durability and strength
- Spare pins and tool included
- Weight: 380g
- Spare pins and tool included



# AZONIC

PEDALS



## WICKERD RL PEDAL 3059-2\*\*

Graphic: Color	Article N°
Black	3059-200
Blue	3059-201
Red	3059-203
Silver	3059-205

### FEATURES:

- CNC machined extruded Aluminum
- Double anodized and high-polish finish
- Platform: 105 x 100mm
- Thin pedal body with great clearance: 6.5-9mm
- Durable DU bushings and dual-sealed bearings for maximum protection against the elements
- CNC machined Chromoly spindle
- Weight: only 310g/ pair
- Spare pins and tool included



## KAMIKAZE PEDAL 3064-2\*\*

Graphic: Color	Article N°
Matte Black	3064-200
Neon Yellow	3064-201
Neon Green	3064-202
Neon Orange	3064-203

### FEATURES:

- Super thin and lightweight die-cast Aluminum pedal
- Platform: 105 x 101mm
- Thin pedal body with great clearance: 10mm
- Durable DU bushings and dual-sealed bearings for maximum protection against the elements
- CNC machined 4130 Chromoly spindle
- 24 replaceable steel pins per pedal
- Weight: 435g/ pair
- Spare pins and tool included





## AMERICANA PEDAL 3063-1\*\*

Graphic: Color	Article N°
Blue	3063-108
Matte Black	3063-109
Neon Yellow	3063-110
Red	3063-111
Silver	3063-112

### FEATURES:

- Die-cast CNC machined Aluminum
- Painted and anodized finish
- Platform: 105 x 93mm
- Concave pin layout for improved grip
- Durable DU bushings and dual-sealed bearings for maximum protection against the elements
- CNC machined 4130 Chromoly spindle
- 16 replaceable steel per pedal
- 4 spare pins included
- Weight: only 410g/ pair
- Spare pins and tool included

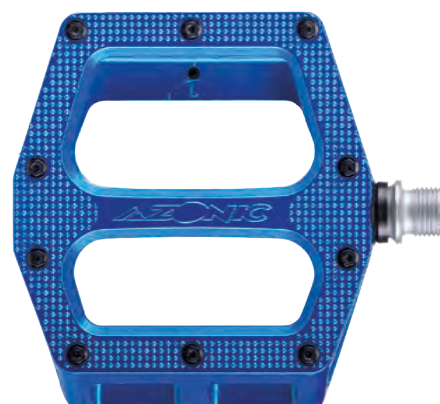
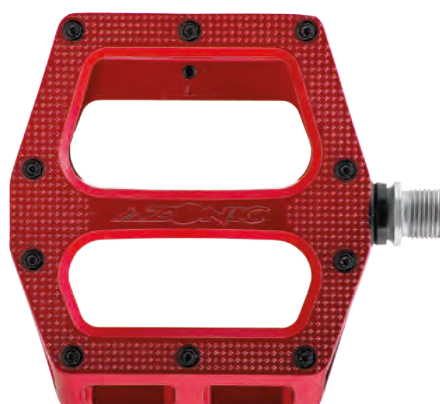
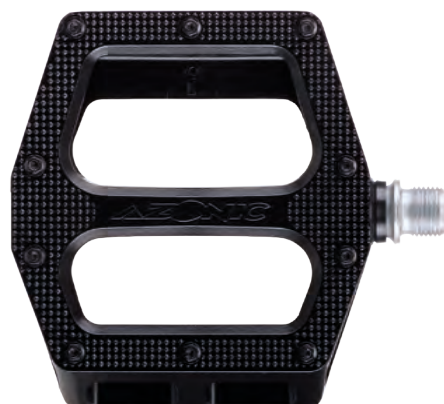


## PUCKER UP PEDAL 3060-1\*\*

Graphic: Color	Article N°
Black	3060-105
Blue	3060-106
Red	3060-107

### FEATURES:

- Die-cast Aluminum
- Painted and anodized finish
- Platform: 100 x 100mm
- Concave platform with diamond surface for increased grip
- Durable DU bushings and dual-sealed bearings for maximum protection against the elements
- CNC machined 4130 Chromoly spindle
- 20 replaceable steel pins per pedal
- Weight: only 420g/ pair
- Spare pins and tool included



## BLAZE PEDAL 3065-1\*\*

<b>Graphic: Color</b>	<b>Article N°</b>
Black	3065-101
White	3065-102
Red	3065-103
Neon Green	3065-104
Neon Yellow	3065-105
Blue	3065-106

### FEATURES:

- Extremely durable fiber-reinforced nylon pedal
- Platform: 105 x 100 mm
- Thickness: 16mm
- High-quality bearing and spindle technology from the Azonic CNC pedals
- Durable DU bushings and dual-sealed bearings for maximum protection against the elements
- CNC machined 4130 Chromoly spindle
- 16 replaceable steel pins per pedal
- Weight: 350 g/pair
- Spare pins included





## SHOO-IN PEDAL 3061-1\*\*

Graphic: Color	Article N°
Black	3061-100
White	3061-101
Red	3061-103
Neon Yellow	3061-105

### FEATURES:

- Tough, durable and lightweight fiber-reinforced nylon pedal
- Platform: 105 x 100mm
- Loose ball bearings
- Chromoly spindle
- Tough and durable molded pins
- Weight: only 322g/ pair



FAT35 | BLACK/WHITE



FAT35 | BLACK/GRAY



FAT35 | BLACK/BLUE



FAT35 | BLACK/YELLOW



FAT35 | BLACK/RED

## FLOW FAT35 HANDLEBAR

Graphic: Color	Article N°
Black/White	3007-000
Black/Blue	3007-001
Black/Yellow	3007-002
Black/Red	3007-003
Black/Gray	3007-004

### FEATURES:

- Double-buttet 7050 T6 Aluminum
- Clamp size: 34,9mm
- Custom marked for precise cutting
- Weight: 345g
- Width: 785mm
- Rise: 18mm
- Upsweep: 4°
- Backsweep: 7°

# AZONIC

HANDLEBARS



## FLOW HANDLEBAR

Graphic: Color	Part.N°	750MM, 1"	750MM, 2"	800MM, 1"
Black/White	301*-***	1-000	2-000	3-400
Black/Blue	301*-***	1-002	2-001	3-402
Black/Yellow	301*-***	1-003	2-002	3-403
Black/Red	301*-***	1-004	2-003	3-404
Black/Gray	301*-***	1-001	2-004	3-401

**SIZES:** 31.8mm, 750 or 800mm, 1" or 2" Rise

### FEATURES:

- Double butted 7050 T6 Aluminum
- Clamp size: 31,8mm
- Custom marked for precise cutting
- Weight: anodized 340/ 350g
- Width: 750/ 800mm
- Rise: 1" / 25mm
- Upsweep: 4°
- Backsweep: 7°



## AGILE HANDLEBAR

Graphic: Color	Article N°
CRANK*	3001-113
Neon Yellow*	3001-114
Black/Gray	3001-111
Blue	3001-112
Red	3001-115
Titanium Gray	3001-116
Black	3001-117

\*Special colors

### FEATURES:

- Also now available in the famous Crank design!
- Double-butted 6061 T6 Aluminum
- Clamp size: 31,8mm
- Custom marked for precise cutting
- Weight: 380g
- Width: 780mm
- Rise: 1" / 25mm
- Upsweep: 4°
- Backsweep: 7°



## THE ROCK STEM

Graphic: Color	Part.N°	FAT35	NORMAL
Black	3055-1**	00	06
Red	3055-1**	02	07
Blue	3055-1**	01	08
Neon Yellow	3055-1**	04	09

### FEATURES:

- CNC machined, 6061 T6 Aluminum
- Anodized polished finish
- Laser etched logos
- NORMAL: 31,8mm bore diameters
- FAT35: 34,9mm bore diameters
- 1 1/8 inch steerer clamps
- 45mm extension
- Stack height: 40mm
- 0° rise
- Weight: 150g (including screws)



## PREDATOR STEM

Graphic: Color	Part.N°	50mm
Black	3075-1**	00
Red	3075-1**	01
Blue	3075-1**	02
Neon Yellow	3075-1**	10

### FEATURES:

- CNC machined 6061 T6 Aluminum
- Anodized polished finish
- Laser etched logos
- 31,8mm bore diameter
- 1 1/8 inch steerer clamps
- 50mm extension
- 35mm stack height
- 0° rise
- Weight: 125g (including screws)

## BARETTA EVO STEM

Graphic: Color	Article N°
Black	3050-200
Blue	3050-201
Red	3050-202
Neon Yellow	3050-206

### FEATURES:

- CNC Machined 6061 T6 Aluminum
- Anodized finish
- Laser etched logos
- 31,8 mm bore diameter
- 1 1/8 inch steerer clamps
- 40mm extension
- 38mm stack height
- 15° rise
- Weight: 196g (including screws)



# AZONIC

STEMS

## LOGO GRIP

**Graphic: Color Article N°**

Black	3300-200
Gray	3300-201
Purple	3300-202
Red	3300-203
Gold	3300-204
Green	3300-205
Blue	3300-206



### FEATURES:

- Designed for maximum grip and bike control with extra grippy surface
- Polished anodized aluminum lock-ons
- Lazer etched logos
- Grip length: 130mm
- Weight: 110g/ pair
- Allen Screws to fix the lock-ons
- Comes as grip set with lock-ons and plugs



## DIAMOND GRIP

**Graphic: Color Article N°**

Blue	7164-000
Black	7164-001
Red	7164-003
Gold	7164-004
Green	7164-005
Gray	7164-006
Purple	7164-007



### FEATURES:

- Designed for maximum grip and bike control with extra grippy surface
- Polished anodized aluminum lock-ons
- Lazer etched logos
- Grip length: 130mm
- Weight: 110g/ pair
- Allen Screws to fix the lock-ons
- Comes as grip set with lock-ons and plugs



**AZONIC**  
GRIPS



CRANK | MULTI

## SPLATTER FENDER

**Graphic: Color**

**Article N°**

CRANK: Multi	3080-103
ENIGMA: Black/White	3080-104
SHOCKER: Black/Neon Yellow	3080-110
SHOCKER: Black/White	3080-111
WILD: Multi	3080-113
LOGO: Black/Blue	3080-105
LOGO: Black/Neon Green	3080-106
LOGO: Black/Neon Yellow	3080-107
LOGO: Black/Red	3080-108
LOGO: Black/White	3080-109

### FEATURES:

- Prevents mud and water spray while riding
- Universal fit for front and back: 8 holes
- Comes with 6 zip ties for mounting and as spares
- Polypropylene
- 265 x 221mm (0,8 mm thick)
- Weight: 33 g

LOGO | BLACK/NEON GREEN



LOGO | BLACK/BLUE



LOGO | BLACK/WHITE



LOGO | BLACK/RED



LOGO | BLACK/NEON YELLOW



ENIGMA | BLACK/WHITE



SHOCKER | BLACK/NEON YELLOW



SHOCKER | BLACK/WHITE



WILD | MULTI



# AZONIC

FENDERS

## UMMA GUMMA

Graphic: Color

Article N°

Black/White

3090-003

### FEATURES:

- Protect your chain stay with Umma Gumma!
- Fits all chain stays: 4 sizes in 1, simply cut to fit



## FRAME GUARDS

Graphic: Color

Part. N°

L

XL

CLEAR

3810-0\*\*

00

01

CRANK: Gray

3810-0\*\*

02

03

CRANK: Multi

3810-0\*\*

04

05

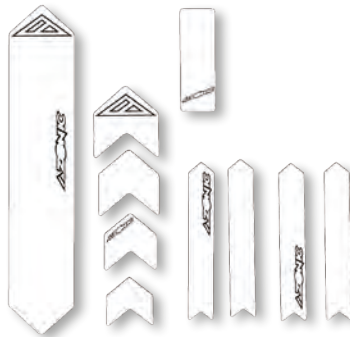
### FEATURES:

- Protect your bike with the new frame guards from Azonic
- The special diamond structure ensures maximum protection against scratches
- Easy to mount, even on tricky parts of your bike
- Includes several patches to fit most high-risk areas
- Lightweight but maximum protection
- Available in transparent, the famous O'Neal Crank design and a translucent gray Crank design
- Available in 2 sizes: standard and XL

CRANK XL | GRAY



CLEAR XL



CRANK XL | MULTI



CRANK L | GRAY



CLEAR L



CRANK L | MULTI

