

AMP

ALL MISSIONS PACK

Adaptable, durable and ready to serve your needs in any situation. Innovative features and thoughtful design backed by subject-matter-experts and used around the world. The AMP series of bags will ensure you are equipped to handle any mission.

ONE BAG, ALL MISSIONS

COMMUTING, WORKING AND TRAINING, THE AMP SERIES OF PACKS CAN ADAPT TO YOUR NEEDS THROUGH OUR GEAR SETS™

Click on a bag to see how each is configured



ALWAYS TRAINING



ALWAYS WORKING



ALWAYS SEARCHING



TRAIN >>

WORK >>

SEEK >>



TRAIN >>

WORK >>

SEEK >>



TRAIN >>

WORK >>

SEEK >>







TRAIN >>

WORK >>

SEEK >>



TRAIN >>

WORK >>

SEEK >>











TRAIN >>

WORK >>

SEEK >>

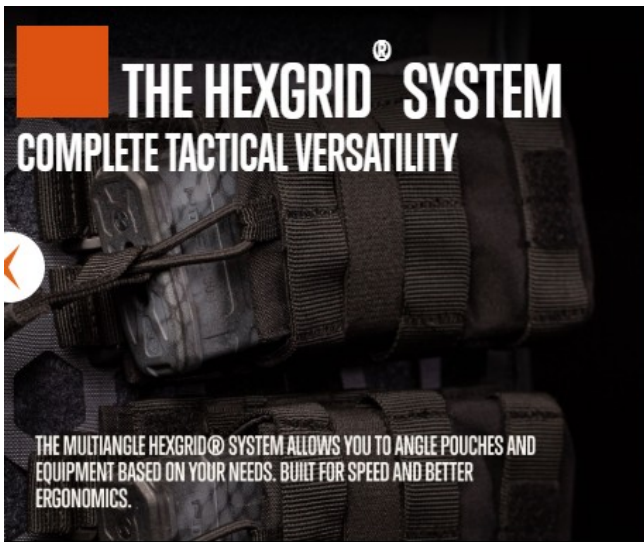
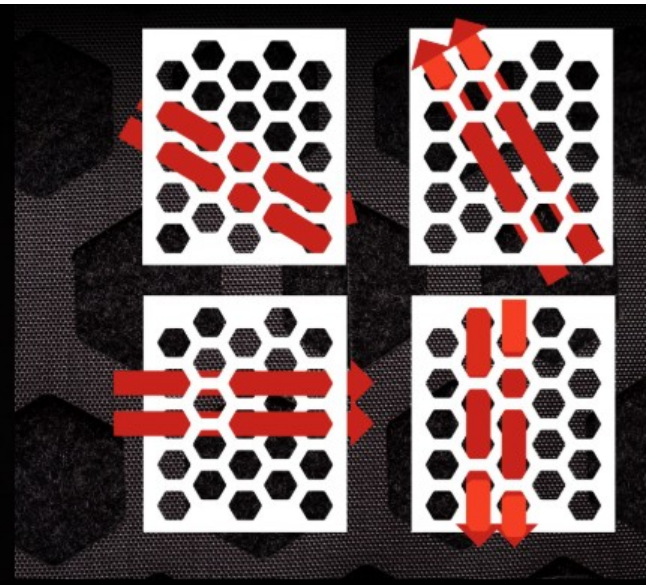


VERSATILITY MADE EASY
A SIMPLE SOLUTION TO ORGANIZE ALL THE GEAR YOU NEED. GEAR SETS WORK SMOOTHLY INSIDE AND OUT OF AMP BAGS SO YOU CAN GET THE MOST OUT OF THE SYSTEM. SIMPLY UNBUCKLE, REMOVE AND REATTACH.



THE HEXGRID[®] SYSTEM
COMPLETE TACTICAL VERSATILITY

THE HEXGRID[®] SYSTEM ALLOWS THE USER TO FIND THE RIGHT ANGLE THAT WORKS FOR THEIR NEEDS. INCREASE SPEED OF ACCESS AND IMPROVE THE ERGONOMICS OF YOUR LOAD OUT.



THE HEXGRID[®] SYSTEM
COMPLETE TACTICAL VERSATILITY

THE MULTIANGLE HEXGRID[®] SYSTEM ALLOWS YOU TO ANGLE POUCHES AND EQUIPMENT BASED ON YOUR NEEDS. BUILT FOR SPEED AND BETTER ERGONOMICS.



3 SIZES TO CHOOSE FROM

THE AMP BAG COMES IN THREE SIZES. WHETHER YOU ARE COMMUTING TO WORK OR EXPLORING THE BACKCOUNTRY FOR A FEW DAYS, WE HAVE AN AMP BAG THAT WILL WORK FOR YOU. ONE BAG, ALL MISSIONS.

Click on a beacon to see the capacity of the AMP pack.



AMP12
25L



AMP24
32L



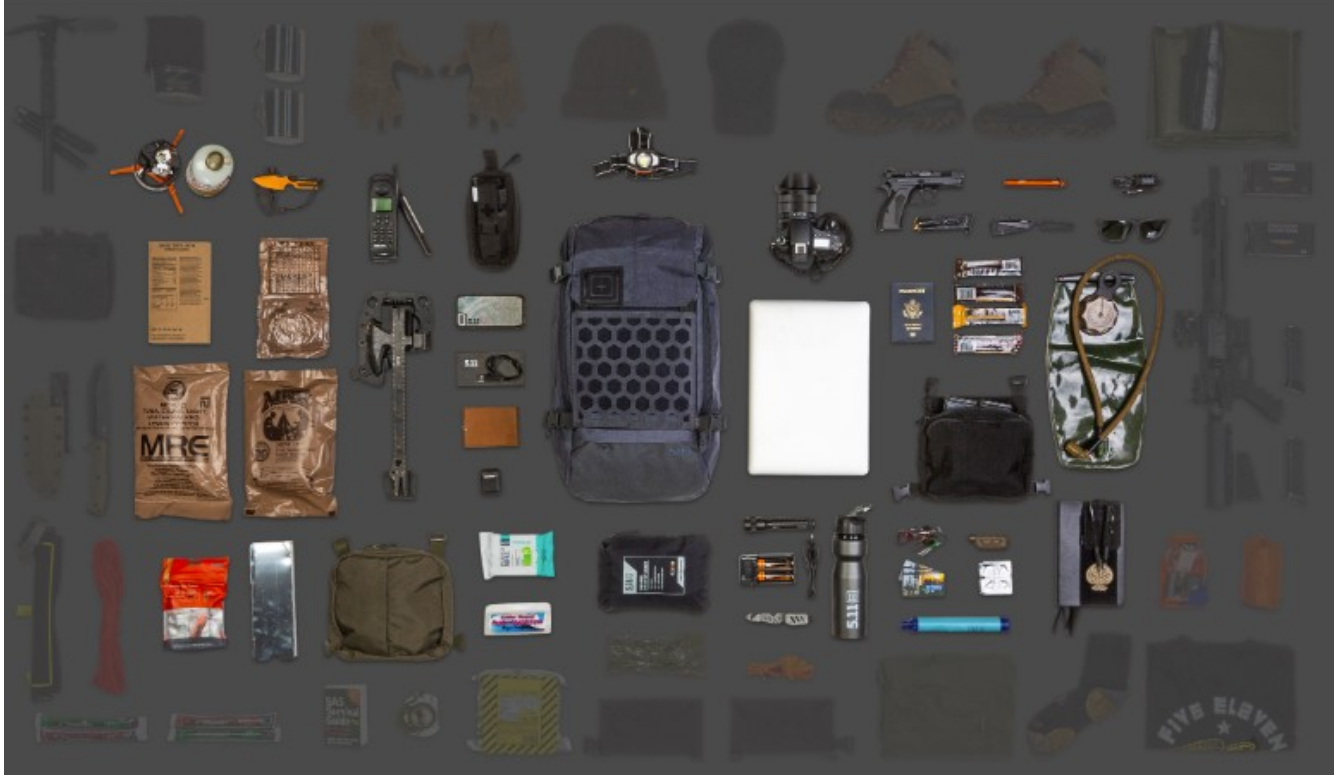
AMP72
40L

3 SIZES MAKE FINDING THE PERFECT CAPACITY EASY

AMP12

AMP24

AMP72



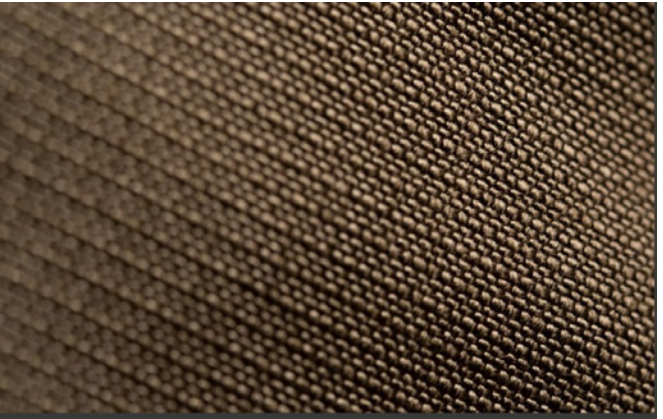
**Feature rich with improved design
that can be customized to meet
your needs. One bag, all missions.**





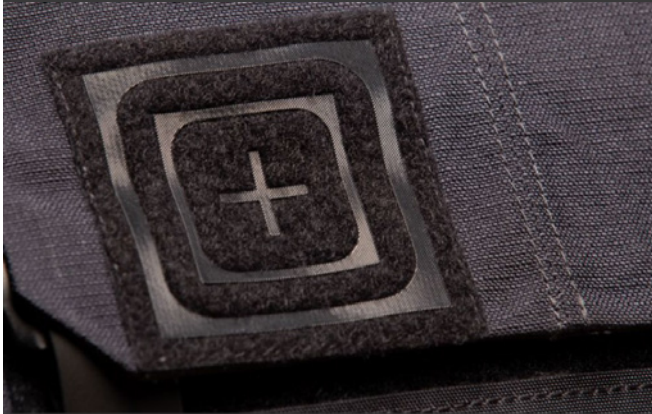
ACCESS WITH EASE

Quad-Zip zippers with pull cords allow for full access to the clamshell opening.



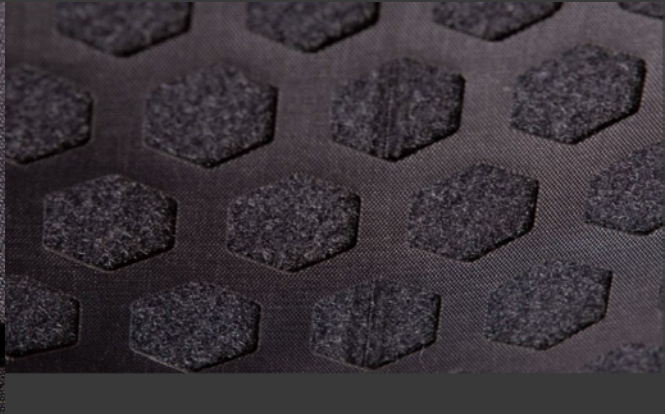
BUILT FOR ABUSE

Water resistant 500D Dobby Nylon with a 1050D Nylon bottom for extra durability in high wear spots.



PATCH READY

Show off your favorite hook-and-loop patch or agency credentials.



HEXGRID®

Our innovative HEXGRID® load bearing system allows you to customize the angles of how you mount your gear. Hook-and-loop backed for patches and other gear.



KEEP IT TIGHT

Large buckles and straps allow you to manage the load and compress the bag for optimal performance.



CCW EQUIPPED

When the only option is carrying off body, we built a CCW pocket with hook-n-loop interior for a holster.



STRENGTHENED GRIP

The drag handle has been reinforced to stand heavy loads. Stitched for strength and built to carry the load.



LAPTOP OR HYDRATION COMPARTMENT

The expandable back panel allows you to store a laptop computer or hydration bladder depending on your needs out in the field.



CORD MANAGEMENT

Elastic bands on the shoulder straps allow you to control unruly hydration hoses or communication wires.



QUICK RELEASE + OPTIONAL WAISTBAND

The Comfort Yoke features quick release straps for fast removal of the pack.



EASY FIT

Adjust the sternum strap with ease and get the fit that works for your mission.



ENHANCED ERGONOMICS

Thermoformed back panel increases comfort and allows a better fit. No longer will you be poked in the back by gear inside the bag.



INTERNAL MESH POCKETS

Zippered mesh pockets allow you to see gear and quickly get to it.



GEAR SET™ READY

Compatible with our internal and external Gear Set™ system. Customize your pack based on your needs. Create multiple Gear Set™ systems to meet your mission.



ORGANIZED

Outfitted for all your admin and quick access needs.



INTERNAL LOOP PANEL

A padded loop panel inside the bag allows you to use other hook-and-loop gear.

AVAILABLE IN 4 COLORS



RANGER GREEN



TUNGSTEN



BLACK



KANGAROO

GEAR SET™ READY

THE AMP TAKES ADVANTAGE OF OUR INNOVATIVE GEAR SET SYSTEM ALLOWING YOU TO BUILD OUT A BAG THAT IS READY FOR ALL MISSIONS

Click on a gear set to discover the key component behind The AMP System.



ADMIN



2 BANGER



DOUBLE DEPLOY



HEXGRID 9X9

ADMIN GEAR SET

STAY ORGANIZED WHETHER YOU ARE IN THE FIELD OR COMMUTING TO WORK.



2-BANGER GEARSET™

CLICK TO LEARN MORE ABOUT THE 2
BANGER FEATURES



DOUBLE DEPLOY

DESIGNED FOR QUICK ACCESS TO IFAKS
OR ESSENTIAL PIECES OF GEAR YOU USE
DAILY.



HEXGRID 9X9 GEAR SET

A MULTI-ANGLED LOAD BEARING SYSTEM
DESIGNED FOR QUICK ACCESS AND
IMPROVED ERGONOMICS.

