



Highlights

- Category defining ULTRA HD lens provides unmatched optical clarity
- Quick-release system offers simple lens changing capability
- 6-point locking tabs integrate with quick-change system maximizing lens retention
- Injection-molded 2mm impact-rated, shatter-resistant lens
- Bonded, dual-injection frame construction maximizes strength and durability
- Force air intake ports increase circulation and maximize humidity evacuation
- Contouring compression seal technology to keep goggles in place
- Next generation sweat collection management and drainage system
- Perforated triple-layer face foam manages sweat and increases ventilation
- Ultra-wide 48mm strap with thick silicon bead for maximum grip
- Removable nose guard for extra deflection against roost and debris

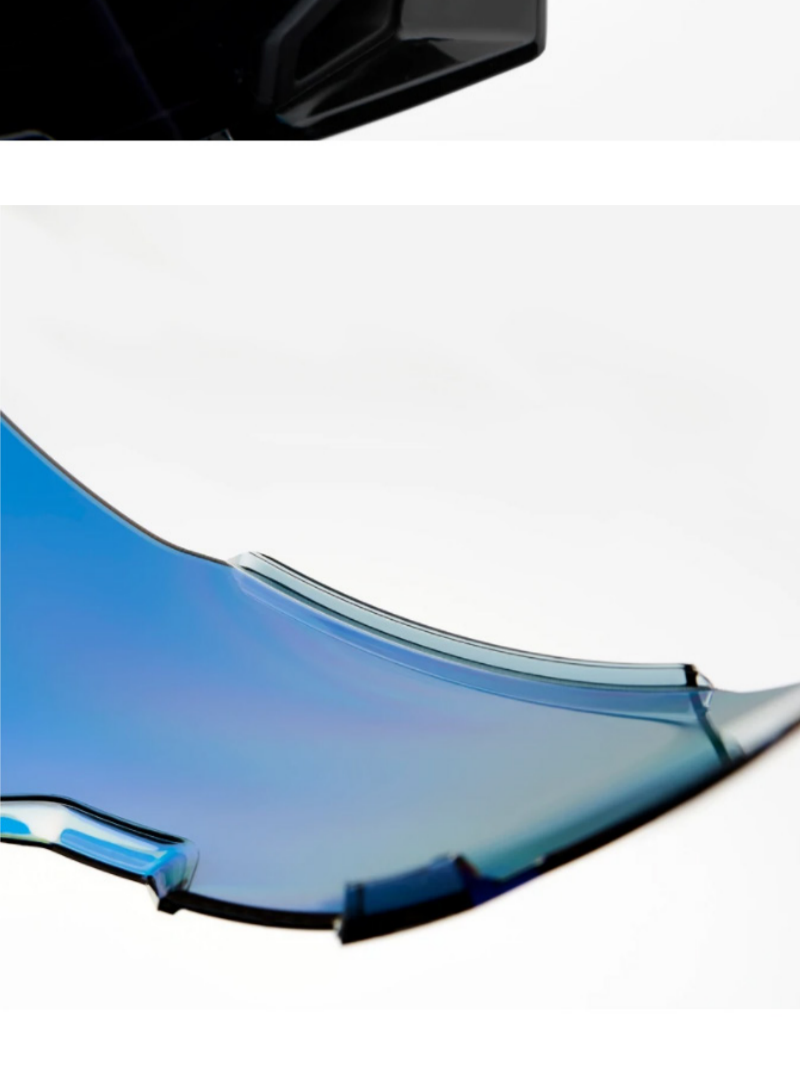
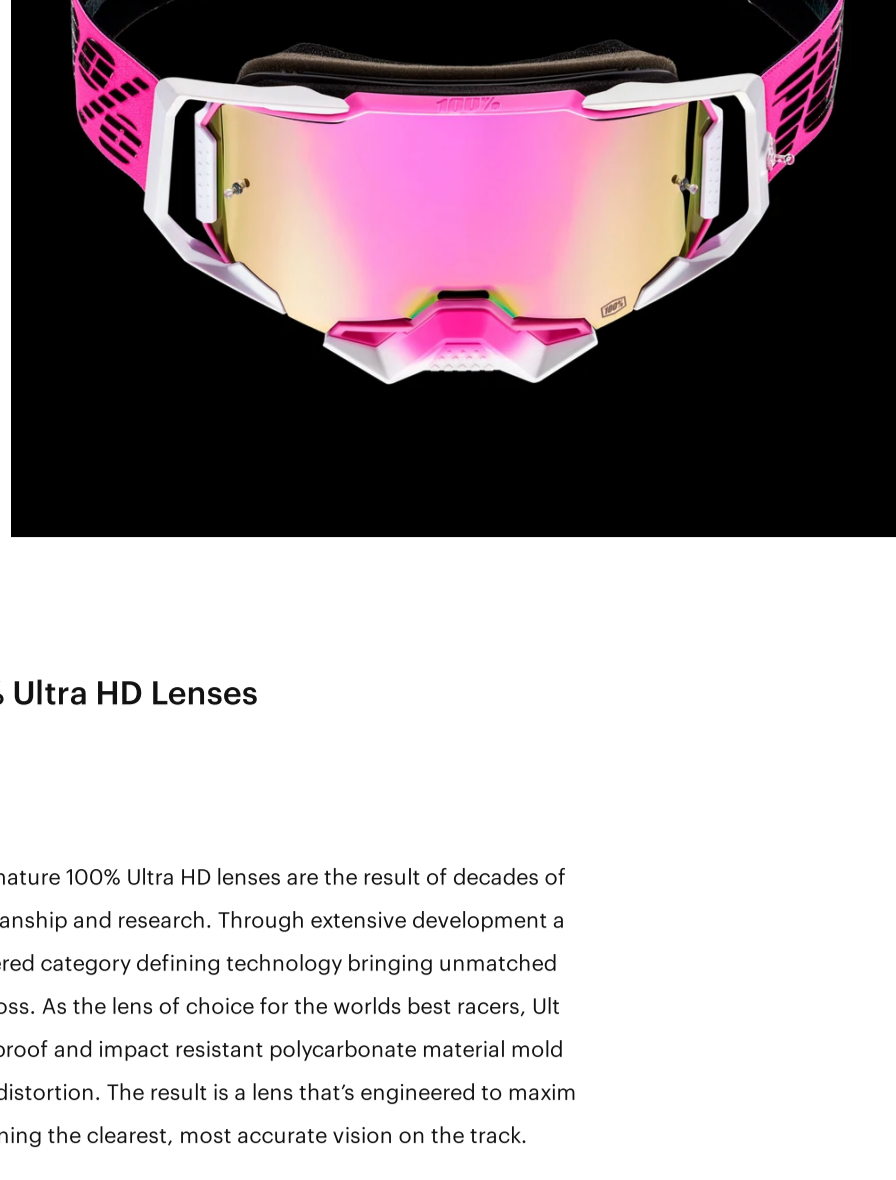
The ARMEGA offers unparalleled dominance for the modern racer: bringing ULTRA HD lens clarity to motocross.

Experience definition and subtlety never before viewed through the lens of a goggle. Add to that our proprietary HIPER contrast-enhancing lens technology and you'll feel the depth of terrain as you're commanding past it.

This premium technology is injection-molded into a shatterproof lens that boasts an enhanced field of vision and impact protection. The 6-point locking tab integration secures the lens and works in unison with a quick-change system enabling you to switch between lenses with a couple of simple clicks.

A bonded, dual-injected frame incorporates a next generation sweat management system that collects sweat as your ride intensifies and forces it away from the lens and out of the goggle through an integrated channel in the frame. Force air intakes in the frame promote increased airflow to ensure fog-free vision, despite heated efforts overcoming sub-par competition.

Want a goggle designed to give it 100% deep in the battlegrounds of motocross? Look no further than the ARMEGA.



100% Ultra HD Lenses



Our signature 100% Ultra HD lenses are the result of decades of craftsmanship and research. Through extensive development and engineering category defining technology bringing unmatched motocross. As the lens of choice for the worlds best racers, UK shatterproof and impact resistant polycarbonate material molded specifically for zero optical distortion. The result is a lens that's engineered to maximize protection while maintaining the clearest, most accurate vision on the track.

See more. Ride faster.



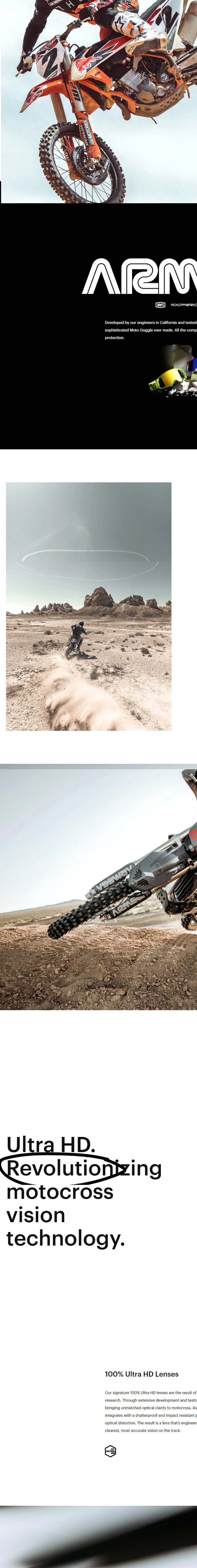
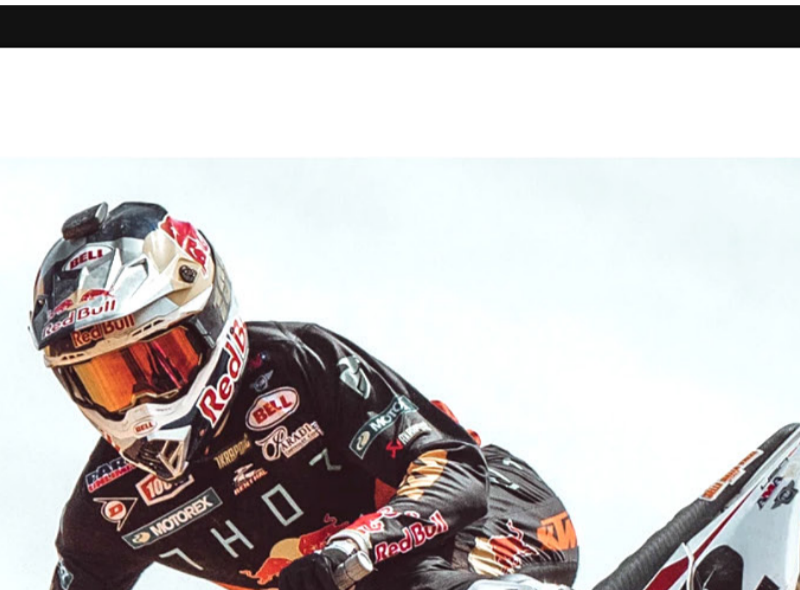
It's simple. Humans see three primary colors - Red, Green and B begins to distort where these three colors overlap. 100% HIPER filter out these crossovers, resulting in greater contrast and eye By ramping up contrast, riders experience depth-defining vision perception to feel every detail of terrain before commanding pa



Integrated 6-point molded Locking Tabs



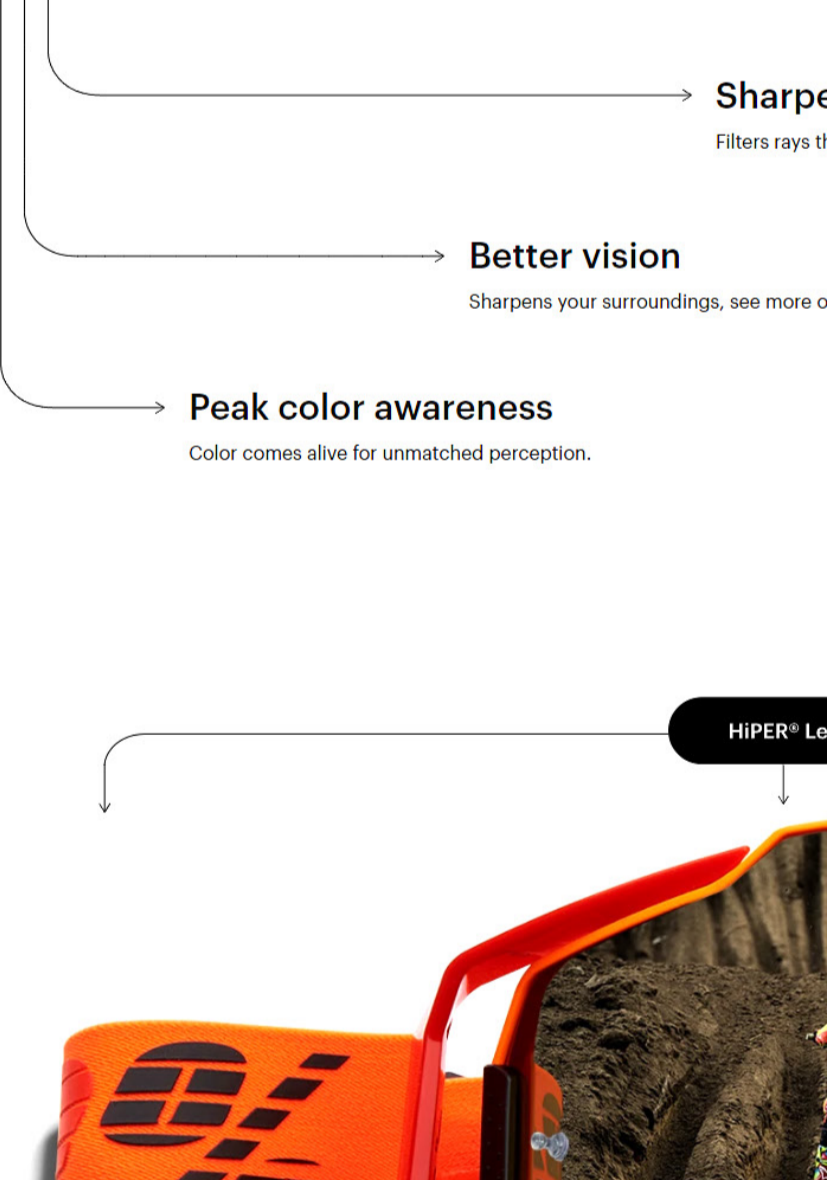
Locked solid. The 6-point locking-tab integration secures the lens with a quick-change system enabling you to switch between ten simple clicks.



Unparalleled performance for the modern Racer.

ARMEGA

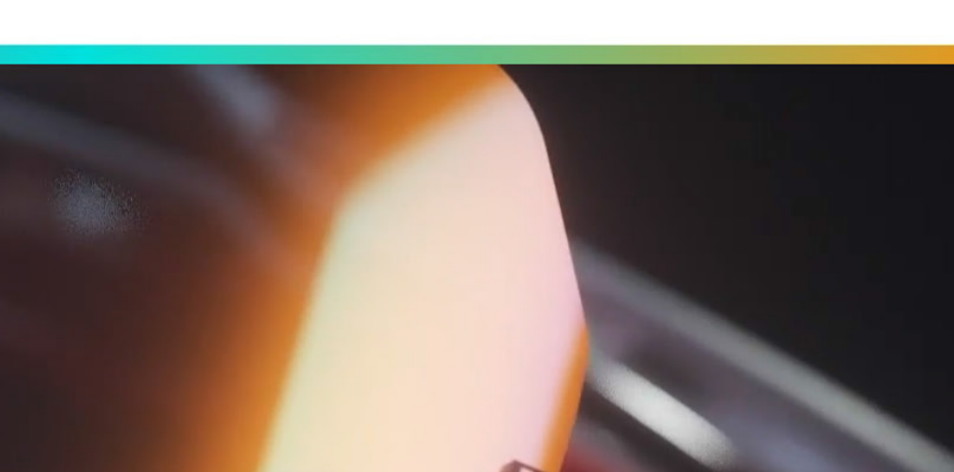
Developed by our engineers in California and tested by our world famous riders, this is the most sophisticated Moto Goggle ever made. All the components come together to form the ultimate protection.



Experience definition and subtlety never before viewed through the lens of a goggle. Add to that our proprietary HIPER contrast-enhancing lens technology and you'll feel the depth of terrain as you're commanding past it.



Ultra HD. Revolutionizing motocross vision technology.



100% Ultra HD Lenses

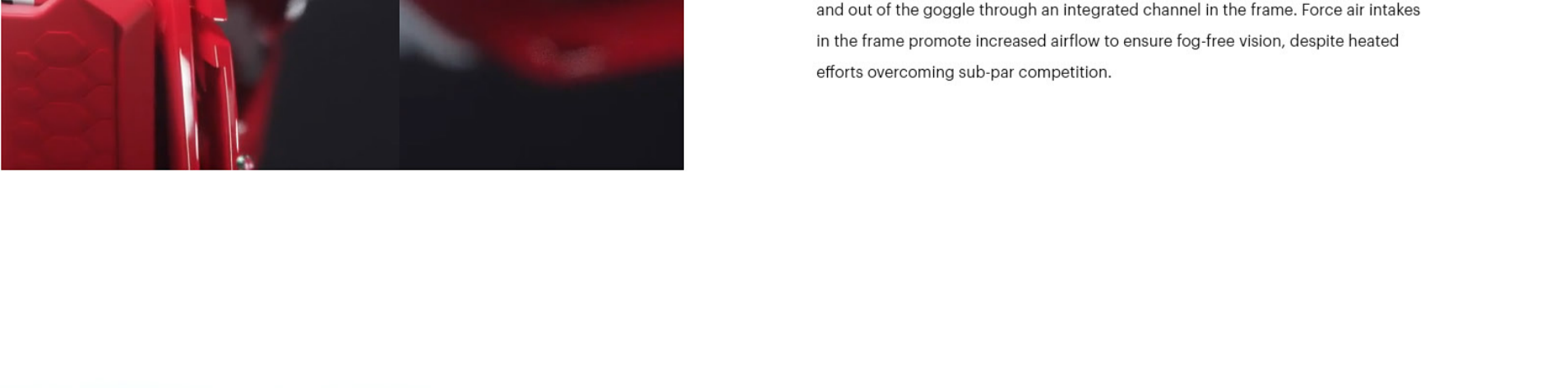
Our signature 100% Ultra HD lenses are the result of decades of passion, design, craftsmanship and research. Through extensive development and testing, we've engineered category defining technology bringing unmatched optical clarity to motocross. As the lens of choice for the worlds best racers, Ultra HD integrates with a shatterproof and impact resistant polycarbonate material molded specifically for zero optical distortion. The result is a lens that's engineered to maximize protection while maintaining the clearest, most accurate vision on the track.



See more. Ride faster.

HIPER
The HIPER Lens is 100% proprietary high-definition lens technology that ramps up contrast, amps up colors and enhances detail so you miss nothing.

- **Sharper contrast**
Filters rays that increase detail & definition for greater depth perception.
- **Better vision**
Sharpens your surroundings, see more of what matters.
- **Peak color awareness**
Color comes alive for unmatched perception.



Integrated 6-point molded Locking Tabs

Locked solid.

The 6-point locking tab integration secures the lens and works in unison with a quick-change system enabling you to switch between lenses with a couple of simple clicks.



Climate control.

A bonded, dual-injected frame incorporates a next generation sweat management system that collects sweat as your ride intensifies and forces it away from the lens and out of the goggle through an integrated channel in the frame. Force air intakes in the frame promote increased airflow to ensure fog-free vision, despite heated efforts overcoming sub-par competition.

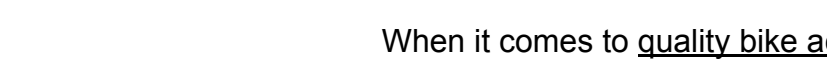


Marvin Musquin wearing the ArmeGA.



100% ArmeGA Goggle

The pinnacle of vision technology



Highlights

- **Ultra HD** - Injected high impact resistant Ultra HD optically correct lens
- **Integrated 6-point molded Locking Tabs** - For maximum lens retention
- **Sealing** - Full contour compression gasket for maximum lens sealing
- **Dual Push to lock & lift** - To release security latches for maximum lens security
- **Fully bonded Dual Injection Frame** - For maximum strength & durability
- **Hi-flow direct injected Air Intake Ports** - For maximum humidity evacuation
- **Ultra-Wide Strap** - With thick silicon bead for maximum grip
- **Push 3D molded face foam** - For maximum ergonomics and comfort
- **Fully perforated Triple Layer Face Foam** - For sweat collection distribution
- **Next generation sweat collection management and drainage system**
- **Hi-flow Air Intake Ports** - with distribution up & around face foam for added cooling
- **Removable Nose Guard** - for extra deflection against roost and debris
- **Supports Triple Post Racing Tear-Offs** (Sold Separately)

When it comes to quality bike accessories, 100% is the brand you can depend on.