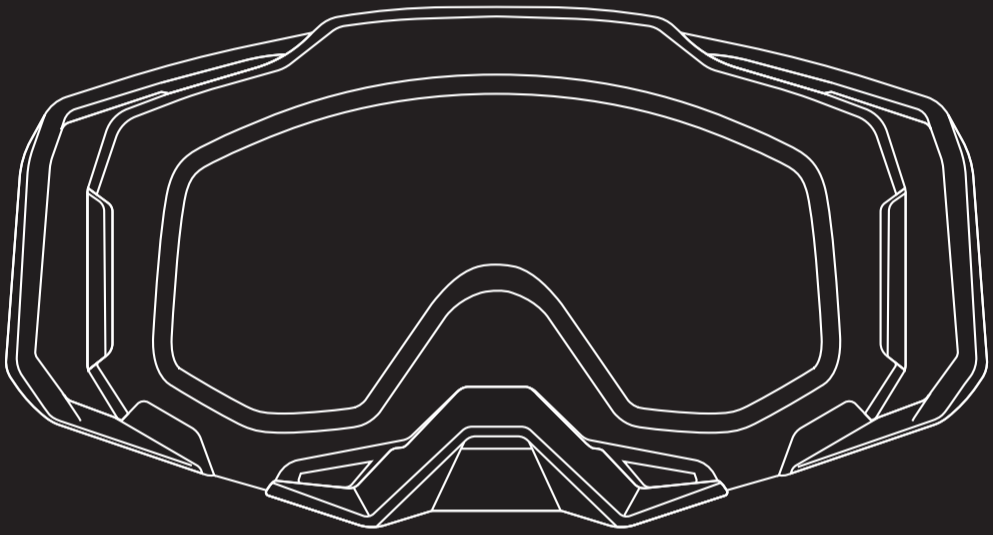


ARMEGA®

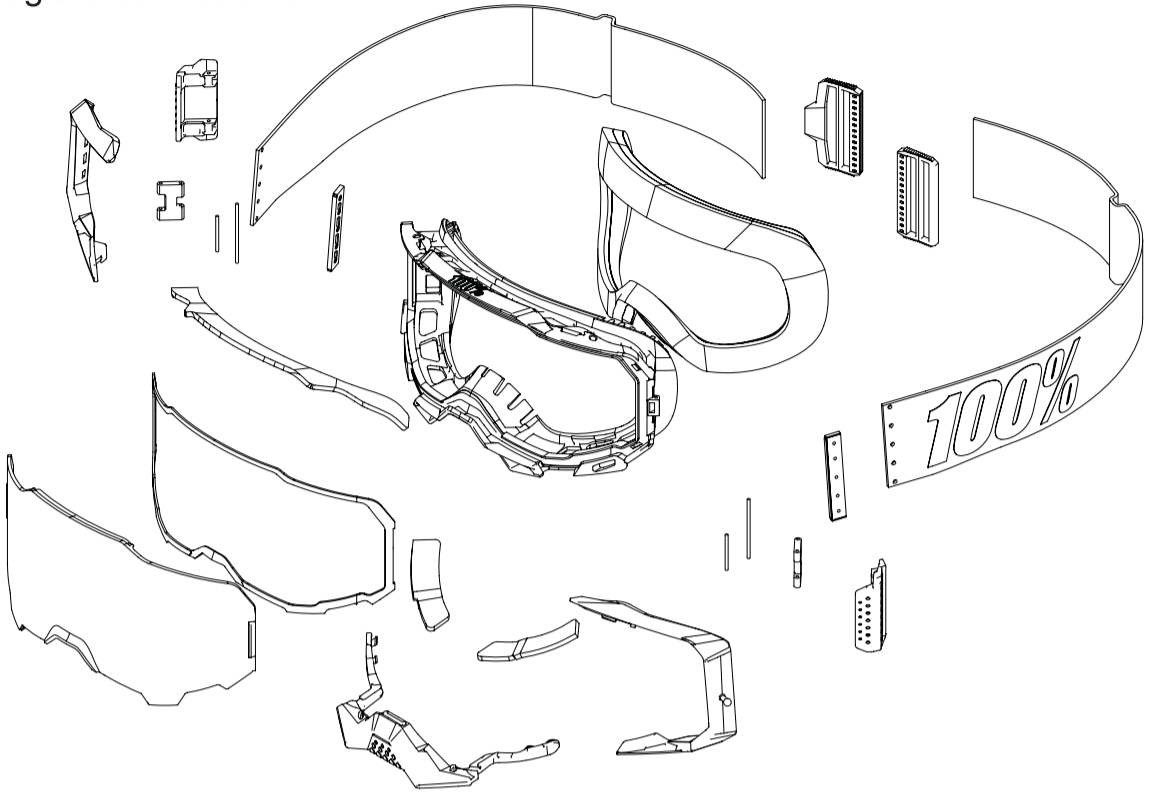
Registered Trademark



Superior Vision for Motorsports
Armega Ultra HD Optics

ARMEGA®

Registered Trademark

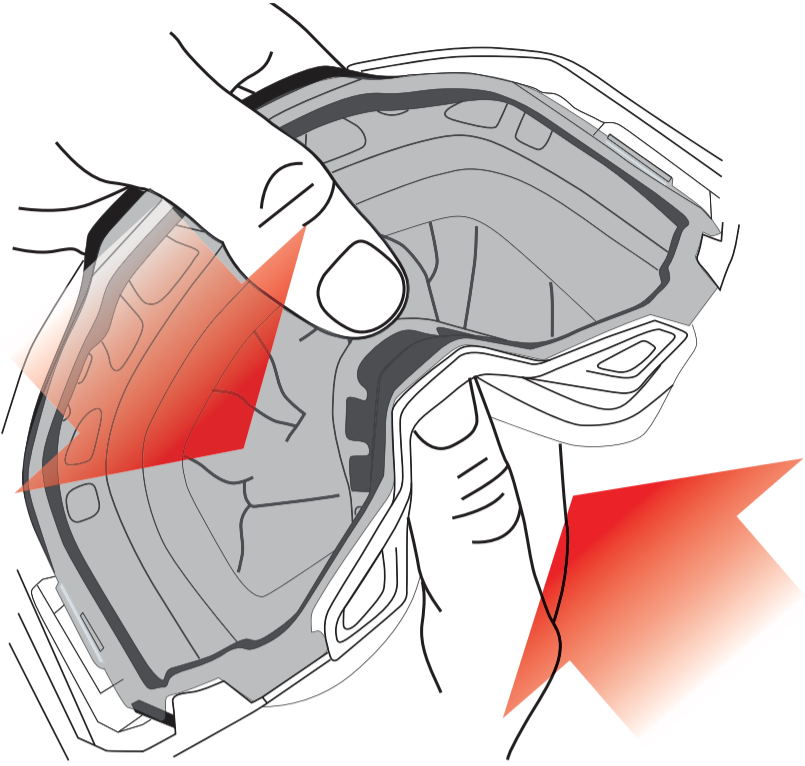


Armega Features:

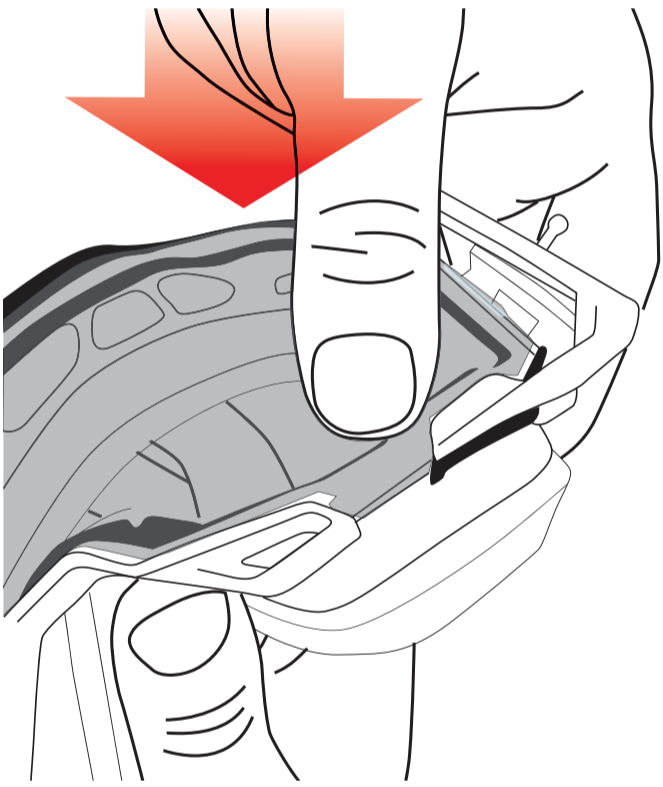
- Injected high impact resistant Ultra HD optically correct lens with integrated 6-point molded locking tabs for maximum retention
- Full contour compression gasket for maximum lens sealing
- Dual push to lock and lift to release security latches for maximum lens security
- Cutting edge fully bonded dual injection frame for maximum strength and durability
- Hi-flow direct injected air intake ports for maximum humidity evacuation
- Ultra-wide strap with thick silicon bead for maximum grip
- Plush 3D molded face foam for maximum ergonomics and comfort
- Fully perforated triple layer face foam for sweat collection distribution
- Next generation sweat collection management and drainage system
- Hi-flow air intake ports with distribution up and around face foam for added cooling
- Includes removable nose guard for extra deflection against roost and debris
- Supports triple post racing tear-offs (Sold Separately)
- Supports Forecast roll-off system (Sold Separately)

Lens Install:

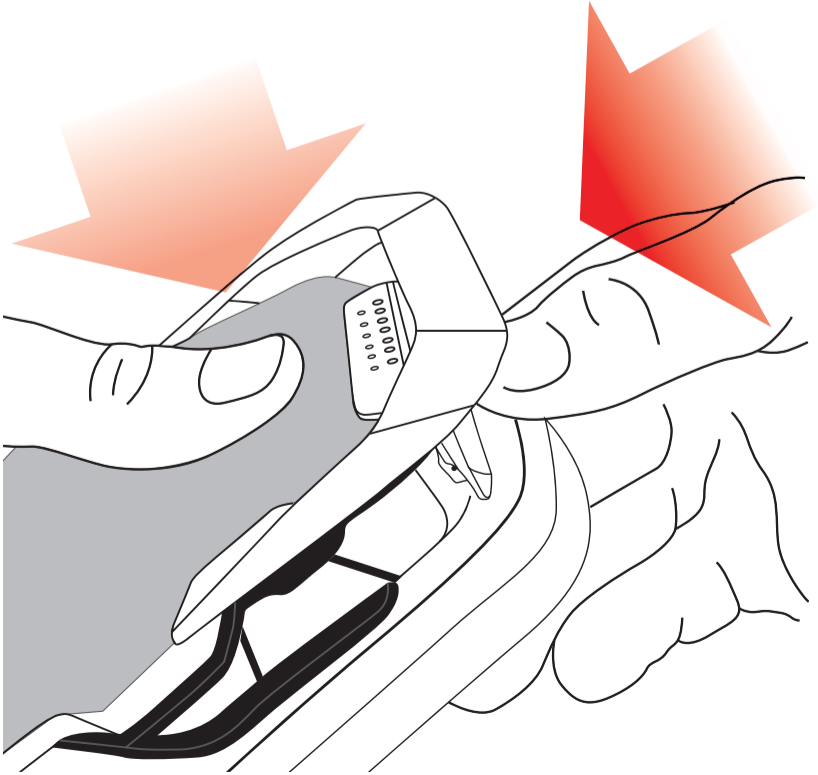
1



2

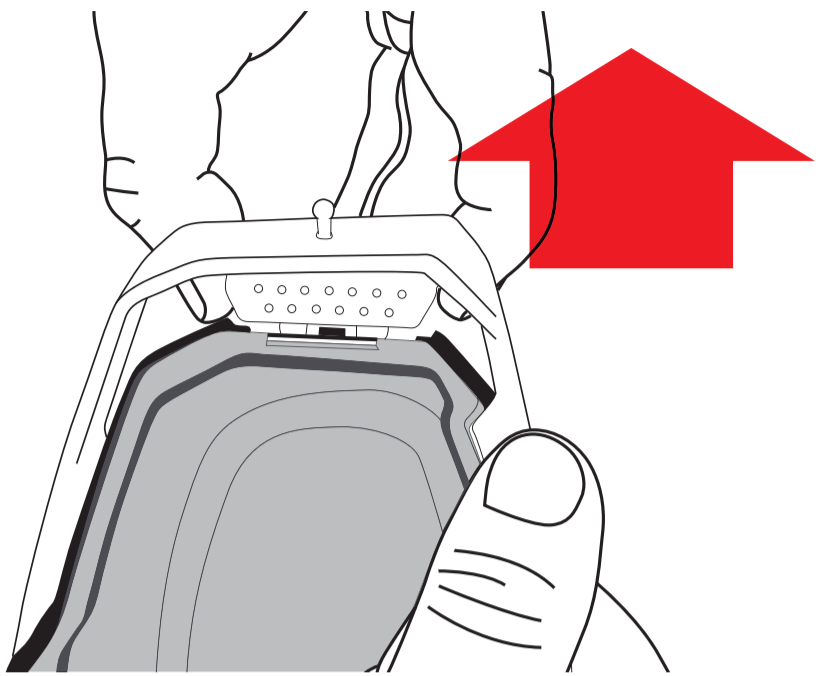


3

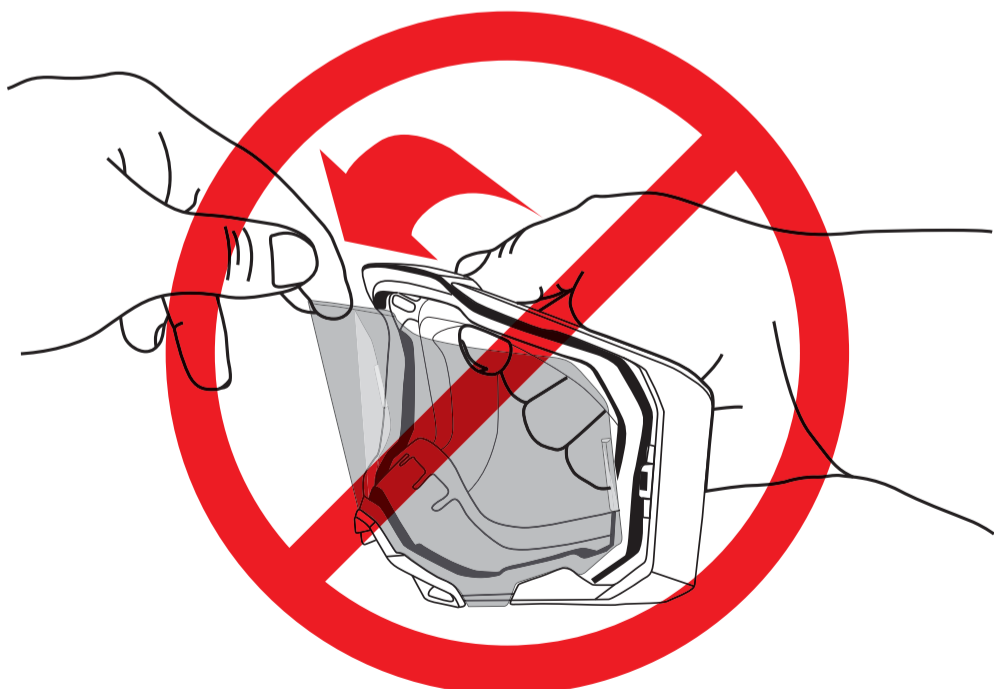
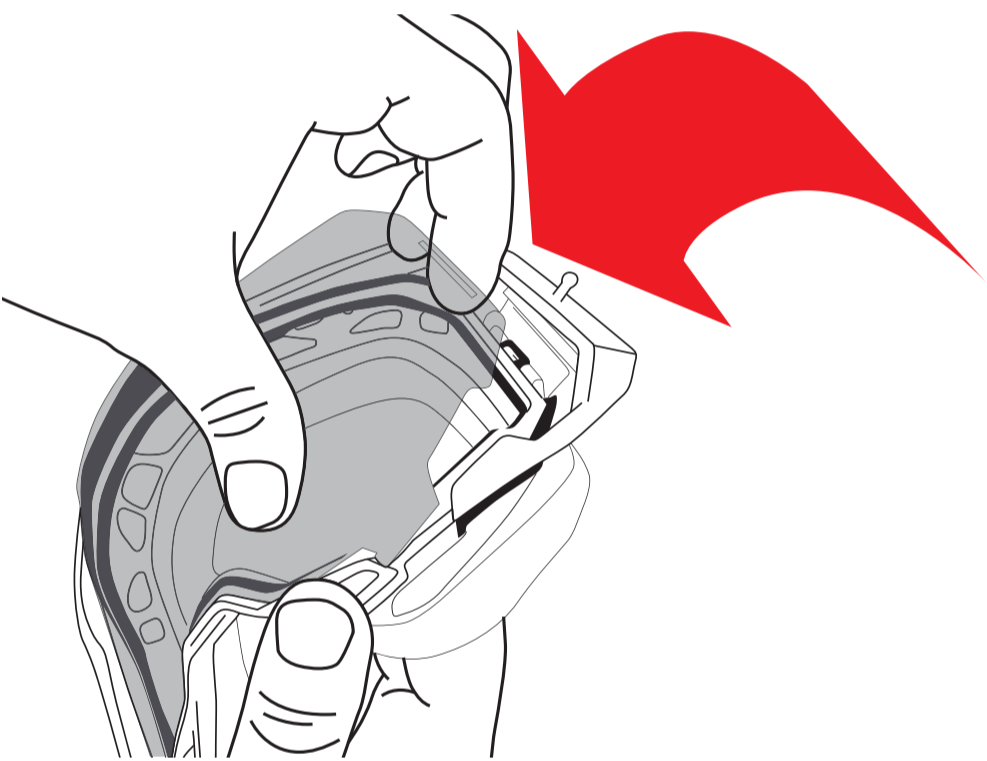


Lens Removal:

1



2



GOGGLE CARE

- Clean the lenses with mild ph. 5.5 soap and water.
- Blot the lens with your goggle bag or a soft cloth to remove excess moisture, or allow to air dry.
- Avoid cleaning or drying the lens with any paper products as it will damage the lens and/or coatings.
- If the lens is scratched, please contact your authorized 100%® dealer to purchase replacement parts.
- For your safety, trust only genuine 100%® CE® certified replacement lenses, parts and accessories.
- Do not place your goggles face down.
- Always store your goggles in the supplied bag after use or during transport.
- Always store your goggles in a cool, dry place away from direct sunlight and/or heat.
- Do not expose your goggles to extreme heat conditions
- Do not expose your goggles to strong detergents or harsh chemicals.
- Do not bend your goggles unnecessarily.
- Inspect your goggles regularly for damage.
- If there's damage; the lens and/or goggle should be replaced immediately. Scratched lenses should be replaced immediately.

LIMITED WARRANTY

100%® provides a one-year warranty against manufacturing defect from the date of purchase. During the term of this warranty, 100%® will replace any current style which is deemed by 100%® to possess a manufacturing defect. Scratched lenses or other wear and tear as a result of normal use are not covered by this warranty.

INTENDED USE

This is not a safety goggle. This goggle is intended for motorsports use only except official races and competitions. It is for protection from wind, solar radiation, and impacts from water and mud. This goggle is resistant to scratches in the event of contact with small metallic particles at a rate of 60 m/s.

This goggle for motorcycle and moped users is manufactured in conformity with the basic requirement established by the Regulation (EU) 2016/425 on personal protective equipment.

On the goggle is reported the following marking:

- Normative Number: EN 1938:2010
- Brand: 100%®

FILTER CATEGORY

Filter Category	% Visible Light Transmission	Warning
0	80-100	
1	43-80	Lenses with luminous transmittance less than 75% are not suitable for night or twilight use!
2	18-43	Not suitable for night driving or twilight conditions.

LENS REPLACEMENT

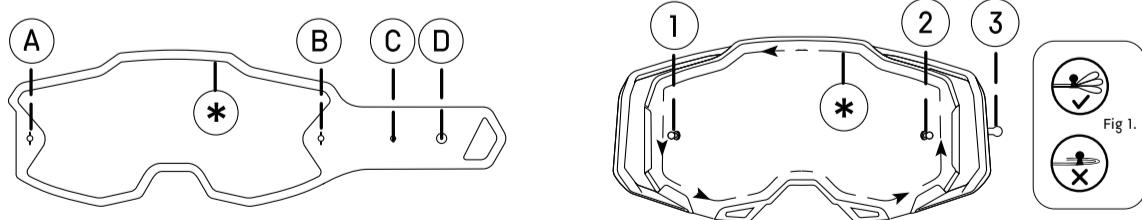
REMOVING LENS:

- 1 While grasping the goggle with one hand, use your other hand to grab onto the locking latch and rotate towards the lens to disengage. Repeat until both sides are fully unlocked.
- 2 Grab onto the lens edge and peel up and away from the nose. Do not rotate or pull off the lens in a downward motion toward the nose.

INSERTING LENS:

- 1 While grasping the goggle and keeping the lens parallel to the goggle frame, press down the nose section until lens snaps into place.
- 2 Verify that the lens is fully seated around the perimeter of the goggle frame.
- 3 With one hand apply pressure near lens edge and with the other hand, push the latch to engage the lock. Repeat until both sides are fully locked.

TRIPLE POST TEAR-OFF SYSTEM INSTALLATION



*Laminated tear-offs with a perimeter seal must have the backing removed prior to application and firmly applied.

1. Begin with a single tear-off or stack of laminated tear-offs and place hole (A) onto post (1)
 2. Place hole (B) onto post (2)
 3. Place hole (C) onto post (3)
 4. Fold hole (D) over post (3)
- Repeat steps until tear-off folds match Figure 1

LENSES

- 100%® offers a complete line of replacement lenses, allowing you to customize your 100%® Goggles to match your riding conditions.
- Our 100%® lens are made from high quality polycarbonate, offering durability, optical clarity and full protection against harmful UV A/B/C spectrums up to 400nm (UV400).
- In most cases the 100%® lens features built in tear-off posts.

VLT (Visual Light Transmittance)

Lens Model	Filter Category	Description
Clear	0	Provides maximum light allowance for all conditions
Smoke	1	For medium to bright light conditions
Silver Mirror/ Smoke Base	2	For bright light conditions

SAFETY WARNING

NO PERSONAL PROTECTIVE EQUIPMENT IS ABLE TO SAFEGUARD AGAINST ALL IMPACTS. NO PERSONAL PROTECTIVE EQUIPMENT CAN OFFER COMPLETE PROTECTION AGAINST ALL INJURIES. MOTORCYCLING IS INHERENTLY DANGEROUS IN NATURE AND USE OF THIS EQUIPMENT CANNOT PREVENT INJURY OR DEATH. WHEN USING THIS EQUIPMENT, THE USER ASSUMES ALL RISK ASSOCIATED WITH THIS ACTIVITY, WHICH MAY CAUSE INJURY OR DEATH. THE USER HEREBY WAIVES ALL CLAIMS AGAINST 100%® SPEEDLAB, LLC. FOR DEATH OR INJURY TO HIS OR HER PERSON AND HEREBY COVENANTS TO NOT SUE FOR ANY CLAIMS ARISING AS A RESULT OF INJURY OR DEATH WHILE USING 100%® PRODUCTS.

CALIFORNIA RESIDENCES

Due to the manufacturing process of polycarbonate, products can contain a precursor required for producing the material and therefore we are required to supply the following:⚠WARNING: This product can expose you to Bisphenol A, which is known to the State of California to cause birth defects or other reproductive harm.